

GLADYS McCOY, Multnomah County Chair

Room 1410, Portland Building
1120 S.W. Fifth Avenue
Portland, Oregon 97204
(503) 248-3308

M E M O R A N D U M

TO: Vice Chair Gary Hansen
Commissioner Dan Saltzman
Commissioner Tanya Collier
Commissioner Sharron Kelley

FROM: Gladys McCoy
Multnomah County Chair

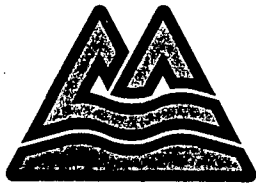
DATE: February 17, 1993

RE: Absence from Board Work Session

I will not be attending this mornings Board Work Session. I have a Doctor's appointment.

GM:mrj
9892G

1993 FEB 17 AM 8:56
COUNTY COMMISSIONER
MULTNOMAH COUNTY
OREGON



MULTNOMAH COUNTY OREGON

OFFICE OF THE BOARD CLERK
SUITE 1510, PORTLAND BUILDING
1120 S.W. FIFTH AVENUE
PORTLAND, OREGON 97204

BOARD OF COUNTY COMMISSIONERS		
GLADYS McCOY •	CHAIR •	248-3308
DAN SALTZMAN •	DISTRICT 1 •	248-5220
GARY HANSEN •	DISTRICT 2 •	248-5219
TANYA COLLIER •	DISTRICT 3 •	248-5217
SHARRON KELLEY •	DISTRICT 4 •	248-5213
CLERK'S OFFICE •	248-3277 •	248-5222

AGENDA

MEETINGS OF THE MULTNOMAH COUNTY BOARD OF COMMISSIONERS

FOR THE WEEK OF

February 15 - 19, 1993

Monday, February 15, 1993 - HOLIDAY - OFFICES CLOSED

Tuesday, February 16, 1993 - 9:30 AM - Board Briefings. . .Page 2

Tuesday, February 16, 1993 - 1:30 PM - Board Briefing . . .Page 2

Tuesday, February 16, 1993 - 2:00 PM - Agenda Review. . . .Page 2

**Wednesday, February 17, 1993 - 9:30 AM - Budget Work Session
Management Support
ServicesPage 2**

**Wednesday, February 17, 1993 - 1:30 PM - Budget Work Session
Nondepartmental. .Page 3**

Thursday, February 18, 1993 - 9:30 AM - Regular Meeting. . Page 3

**Friday, February 19, 1993 - 9:30 AM - Budget Work Session
Health Department. . Page 5**

**Friday, February 19, 1993 - 1:30 PM - Budget Work Session
Health Department. . Page 5**

Thursday Meetings of the Multnomah County Board of Commissioners are taped and can be seen at the following times:

Thursday, 10:00 PM, Channel 11 for East and West side subscribers

Thursday, 10:00 PM, Channel 49 for Columbia Cable (Vancouver) subscribers

Friday, 6:00 PM, Channel 22 for Paragon Cable (Multnomah East) subscribers

Saturday 12:00 PM, Channel 21 for East Portland and East County subscribers

INDIVIDUALS WITH DISABILITIES MAY CALL THE OFFICE OF THE BOARD CLERK AT 248-3277 OR 248-5222 OR MULTNOMAH COUNTY TDD PHONE 248-5040 FOR INFORMATION ON AVAILABLE SERVICES AND ACCESSIBILITY.

Tuesday, February 16, 1993 - 9:30 AM

Multnomah County Courthouse, Room 602

BOARD BRIEFINGS

- B-1 Briefing and Recommendation Regarding Courthouse Security Needs. Presented by Chief Deputy John Schweitzer and Major Jim Thacker. 9:30 TIME CERTAIN, 60 MINUTES REQUESTED.
- B-2 Review and Discussion of Space Study Update. Presented by Jim Emerson. 10:30 TIME CERTAIN, 45 MINUTES REQUESTED.
- B-3 Review and Discussion of Proposed Changes in the Animal Control Ordinances. Presented by Art Bloom and Mike Oswald. 11:45 TIME CERTAIN, 15 MINUTES REQUESTED.
-

Tuesday, February 16, 1993 - 1:30 PM

Multnomah County Courthouse, Room 602

BOARD BRIEFING

- B-4 Briefing and Update on the 1993 Legislative Session. Presented by Fred Neal. 1:30 TIME CERTAIN, 30 MINUTES REQUESTED.
-

Tuesday, February 16, 1993 - 2:00 PM

Multnomah County Courthouse, Room 602

AGENDA REVIEW

- B-5 Review of Agenda for Regular Meeting of February 18, 1993
-

Wednesday, February 17, 1993 - 9:30 AM

Multnomah County Courthouse, Room 602

BUDGET WORK SESSION

- WS-1 **MANAGEMENT SUPPORT SERVICES** Budgets Including: Planning & Budget, Finance, Employee Services, Risk Management, Purchasing and Labor Relations. Presented by Hank Miggins, Management Support Services Managers and Planning & Budget Staff.

Wednesday, February 17, 1993 - 1:30 PM

Multnomah County Courthouse, Room 602

BUDGET WORK SESSION

WS-2 NONDEPARTMENTAL Budgets Including: Board of Commissioners, County Auditor, County Counsel, Citizen Involvement, Tax Supervising and Conservation Commission and Other External Agencies. Presented by Planning & Budget Staff, Staff of Nondepartmental Offices and External Agencies.

Thursday, February 18, 1993 - 9:30 AM

Multnomah County Courthouse, Room 602

REGULAR MEETING

CONSENT CALENDAR

DEPARTMENT OF ENVIRONMENTAL SERVICES

- C-1 In the Matter of the Appointments of PETER L. SERRURIER, SCOTT J. KAPLAN, ERIC A. GRASBERGER, DOUGLAS R. HOOKLAND, JEANNE F. LOFTIS, JANET KNEELAND, STEVEN M. CARPENTER, LINDA K. GOUGE, SUSAN FORD BURNS, LIN A ZIMMERMAN, JOHN C. ETTER, KEVIN W. LUBY, GRAIG A CRISPIN AND SCOTT CAPLAN as Animal Control Hearing Officers for the Potentially Dangerous Dog Program, Pursuant to Ordinance No. 732
- C-2 ORDER in the Matter of the Sale of Property Acquired by Multnomah County Through the Foreclosure of Liens for Delinquent Taxes
- C-3 ORDER in the Matter of the Distribution of Proceeds from the Sale and Management of Tax Acquired Property for the Period JULY 1, 1992 through DECEMBER 31, 1992
- C-4 ORDER in the Matter of Contract 15722 for the Sale of Certain Real Property to KENNETH V. JAMES AND MELBA S. JAMES, Husband & Wife
- C-5 ORDER in the Matter of Contract 15724 for the Sale of Certain Real Property to: HARRY C. KIRKELIE AND ELAINE J. KIRKELIE, Husband & Wife
- C-6 ORDER in the Matter of the Execution of Deed D930845 for Certain Tax Acquired Property to ANDREAS TSOUMAS
- C-7 ORDER in the Matter of the Execution of Deed D930855 for Certain Tax Acquired Property to: MARVIN W. ALBAUGH
- C-8 ORDER in the Matter of the Execution of Deed D930846 for Certain Tax Acquired Property to: CHARLES E. MEEKER AND ROBERTA J. EDWARDS

REGULAR AGENDA

DEPARTMENT OF SOCIAL SERVICES

- R-1 First Reading and Possible Adoption of an ORDINANCE Amending Ordinance 632, the Multnomah County Youth Services Commission Ordinance, and Creating the Multnomah County Children and Youth Services Commission and Declaring an Emergency

DEPARTMENT OF ENVIRONMENTAL SERVICES

- R-2 RESOLUTION in the Matter of Certifying an Estimate of Expenditures for the FY 1993-94 Property Tax Program in Accordance with HB 2338

SERVICE DISTRICTS

(Recess as the Board of County Commissioners and convene as the Governing Body of the (INSERT NAME) Service District

- R-3 ORDER in the Matter of Establishment of a Budget Committee

(Recess as the Governing Body of the (INSERT NAME) Service District and reconvene as the Board of County Commissioners)

NON-DEPARTMENTAL

- R-4 First Reading of an ORDINANCE to Amend Ordinance 738 Modifying the Membership for the Advisory Committee on Animal Control Policies and Procedures
- R-5 RESOLUTION in the Matter of Submitting a Three Year Rate Based Serial Levy to Fund Library Services to the Voters at a Countywide Election (Continued from February 4, 1993)
- R-6 RESOLUTION in the Matter of Submitting to the Voters in a Countywide Election a Three Year Rate Based Serial Levy to Fund Jail Operations (Continued from February 4, 1993)
- R-7 An ORDER of the Board of County Commissioners of Multnomah County, Oregon Calling a Measure Election to Submit to the Electors of the County the Question of Contracting General Obligation Bonded Indebtedness in an Amount Not to Exceed \$31,000,000 to Finance Renovation of the Central Library and Reconstruction/Remodeling of the Midland Branch Library and to Possibly Acquire Additional Land for the Midland Branch Library

PUBLIC COMMENT

- R-8 Opportunity for Public Comment on Non-Agenda Matters. Testimony Limited to Three Minutes Per Person.

Friday, February 19, 1993 - 9:30 AM

Multnomah County Courthouse, Room 602

BUDGET WORK SESSION

WS-3 DEPARTMENT OF HEALTH Budget: Presented by Department of
Health and Planning & Budget Staff.

Friday, February 19, 1993 - 1:30 PM

Multnomah County Courthouse, Room 602

BUDGET WORK SESSION

CONTINUED:

WS-3 DEPARTMENT OF HEALTH Budget: Presented by Department of
Health and Planning & Budget Staff.

0264C/35-39
cap

Meeting Date: FEB 17 1993

Agenda No.: Work Session 2

(Above space for Clerk's Office Use)

AGENDA PLACEMENT FORM
(For Non-Budgetary Items)

SUBJECT: BUDGET WORK SESSION

BCC Informal _____ (date) BCC Formal Wed. Feb. 17 1:30 (date)

DEPARTMENT Nondepartmental DIVISION Planning & Budget

CONTACT Dave Warren TELEPHONE X-3822

PERSON(S) MAKING PRESENTATION Planning & Budget Staff, Staff of Nondepartmental Offices and Agencies

ACTION REQUESTED:

☐ INFORMATIONAL ONLY ☐ POLICY DIRECTION ☐ APPROVAL

ESTIMATED TIME NEEDED ON BOARD AGENDA: 1:30-5:00

CHECK IF YOU REQUIRE OFFICIAL WRITTEN NOTICE OF ACTION TAKEN: _____

BRIEF SUMMARY (include statement of rationale for action requested, as well as personnel and fiscal/budgetary impacts, if applicable):

Budget Work Session to Discuss Nondepartmental Budgets including:
Board of Commissioners, Auditor, County Counsel, Citizen Involvement, Tax
Supervising and Conservation Commission, External Agencies

(If space is inadequate, please use other side)

SIGNATURES:

ELECTED OFFICIAL Gladys McCay

Or

DEPARTMENT MANAGER ✓

(All accompanying documents must have required signatures)

BOARD OF
COUNTY COMMISSIONERS
MULTNOMAH COUNTY
OREGON
1993 FEB 10 AM 11:52

Budget Workshop Session
2-17-93
Handout

M E T R O P O L I T A N A R T S C O M M I S S I O N

February 12, 1993

TO: David Warren, Multnomah County Budget Manager
FROM: Bill Bulick, ^{TAB} Executive Director
RE: Metropolitan Arts Commission Budget Request

The Metropolitan Arts Commission's 93/94 Budget Request to Multnomah County is continuation of funding at the current level, \$267,059. We have included narrative materials as per your "overview and instructions." Please let us know if you would like any more information.

We look forward to discussing the Commission's services to Multnomah County citizens and the valuable contribution arts programs make to the County mission.

Thank you.

Metropolitan Arts Commission
1120 SW Fifth Avenue, Room 1023
Portland, Oregon 97204-1983
(503) 823-5111
TDD# (503) 823-6868
Member of the National
Assembly of Local Arts Agencies

Commissioners
Clark Worth
Chairperson
Annie Painter
Vice Chairperson
Jeffrey Alden
Richard J. Brown

Judy Bryant
Isabella Chappell
Nancy Chernoff
Mark Gardiner
Patrick Harrington
Marianne Mayfield Hill
Michael McKeel, DMD

Henk Pander
Joan Shipley
Ramona Soto-Rank
Yolanda Valdes-Rementeria
Virginia Willard

Executive Director
William D. Bulick
(503) 823-5405
Associate Director
Donna Milrany
(503) 823-5404

City Liaison
Commissioner Mike Lindberg
County Liaison
County Executive Gladys McCoy
Regional Transition Team
Liaison Joyce Ashmanskas

**Metropolitan Arts Commission
Budget Request to Multnomah County
Fiscal 93/94**

PURPOSE AND OBJECTIVES OF THE PROGRAM:

"When members of a society wish to secure that society's rich heritage, they cherish their arts and respect their artists. The esteem with which we regard the multiple cultures offered in our country enhances our possibilities for healthy survival and continued social development."

Maya Angelou

MAC, an Agency of Multnomah County

Multnomah County and the City of Portland established the Metropolitan Arts Commission by joint agreement in 1973 in recognition of the value of arts in the community and the importance of public stewardship, funding and policy making.

As a joint City/County agency the Metropolitan Arts Commission is a model of intergovernmental cooperation and efficiency. The Commission is composed of a 16 member board appointed by the County Executive and Mayor, 8 permanent full time staff, and over 200 citizen volunteers who participate in committees, task forces and selection panels. One staff and office serves both jurisdictions. The Multnomah County share of support, currently \$267,059, is not isolated into separate programs but integrated into the overall budget and programs of the agency.

Although County and City funding are co-mingled to insure efficient operations, accountability to County goals and mission is critically important to the Metropolitan Arts Commission. This accountability is assured through the six appointments to our board, an extensive yearly budget and program review and through a year round liaison relationship with one Commission, currently County Chair, Gladys McCoy.

We are particularly active in emphasizing and linking the County's human and social service priorities to our grants making and can report a dramatic and inspiring array of human services that are provided to the County's needy residents by the cultural organizations that are funded (see "Collaborations with Social Service Agencies").

Mission and Programs

The Metropolitan Arts Commission is charged with "supporting the arts and increasing their accessibility to the public." Our clients are the 574,000 citizens of Multnomah County who experience the arts in their schools, museums, parks, concert halls, libraries, neighborhoods, public buildings and social service centers.

The "arts" are a complex system comprised of artists in all media, cultural institutions, festivals and annual activities such as Artquake and the Hispanic Cultural Festival, service organizations such as the World Arts Foundation which operates an inner-city urban music program for "youth at risk," educational programs such as Young Audiences, which brings hundreds of performing artists into schools throughout the area, neighborhood murals and even a film, "Pro and Con," commissioned through the Inverness Jail Percent for Public Art Program.

The Metropolitan Arts Commission operates three principal programs.

- 1) **The Community Services Program** comprises outreach to ethnic minority communities and other underserved audiences, provision of technical assistance (workshops, fundraising, marketing and management assistance), information services (newsletters, economic impact reports, etc.), advocacy, administrative support for the agency and Arts Plan implementation tracking and coordination.
- 2) **The Re-Grants Program** supports arts organizations and artists through direct grants, including operating support to major and mid-sized organizations and project grants to arts in education programs, smaller organizations, community groups and individual artists. These grants are matched 10:1 by private sector contributions.
- 3) **The Public Art Program** provides for the administration of percent for art projects in the County, City, Metro, Tri-Met, and the Port of Portland. Public art maintenance, education and rotation, development of the Visual Chronicle collection and supervision of the Metropolitan Center for Public Art are also included.

"Pro and Con," the first film in the country commissioned through a percent for art program, provides a gritty, no non-sense look at the corrections system and will be used in Multnomah County diversion programs, schools and public television. A new artists' residency program for "youth at risk" is being developed in conjunction with construction of the County Juvenile Justice Center.

Cultural Diversity

During the last few years the Metropolitan Arts Commission has developed one of the strongest policy statements and most diverse board, staff and committees of any major urban arts agency - or local government agency. This year, aggressive outreach fueled a dramatic increase in the percentage of project grants (31%) and technical assistance awards (41%) to minority arts organizations. Intensive work by MAC outreach staff with major cultural organizations in board development, audience outreach, and recruitment of multi-cultural artists and staff has resulted in substantial increases in multi-cultural representation.

Collaborations with Social Service Agencies:

MAC is now funding numerous programs which take the arts into social service agencies as a tool to address gang and drug abuse behavior, homelessness, teen pregnancy, school dropout, delinquency, illiteracy and learning disabilities. Involvement in the arts attracts student interest, builds self esteem, provides alternative learning styles, develops new skills and discipline and teaches respect for diversity. Rosemont School, Boys and Girls Aid Society, White Shield Home, Morrison Day Treatment Center, Janis Youth Program, Waverly Children's Home, Parry Center, the Private Industry Council's STEP program, YWCA Transition School, Self Enhancement, Inc., and the Urban League are among the many sites.

Arts Plan 2000+

The Metropolitan Arts Commission's charter charges the agency to "act in an advisory capacity to the County and the City in connection with the artistic and cultural development and to recommend needed changes in legislation in local laws and policies needed to promote the aesthetic and cultural development."

Under this mandate and in response to widespread and long term arts industry distress, the Metropolitan Arts Commission initiated Arts Plan 2000+, a comprehensive regional cultural planning process, in September, 1990.

Task forces and focus groups, a public opinion survey, comparable cities studies, hundreds of interviews and numerous public meetings contributed to the process, overseen by Dr. Tom Wolf and a team of nationally respected planning specialists.

Seventy-two actions recommendations lay out a clear blueprint for revitalization of our regional cultural sector. Arts Plan makes an equally important connection -- a healthy cultural sector can be put to work

addressing critical community issues such as education, diversity, neighborhood revitalization, economic development and social issues.

Arts Plan Implementation Progress -- MAC's Program Measures

Arts Plan charged the Metropolitan Arts Commission with overall responsibility for tracking implementation progress in addition to dozens of specific goals such as stabilizing funding for arts organizations, cultural diversity, education and audience access initiatives and establishing new relationships with arts groups and governments in an expanded, four county region.

Although the Commission continues to monitor benchmarks such as the percentage of funding to minority organizations, audiences served, ratio of private matches to grants funding and the number of technical assistance services, the 72 Arts Plan recommendations now provide the principal milestones against which we will measure program effectiveness. This rich dialogue with our public yielded an action plan that will guide MAC for the next decade.

During the twelve months since completion of Arts Plan 2000+, substantial progress has been made on 45 of the 72 recommendations. A brief report of implementation highlights is attached.

Arts Plan has been adopted or endorsed by numerous government, civic, business and cultural organizations. The planning process itself engendered the leadership, commitment and cooperation among regional governments and the private sector that are needed for success.

CURRENT SERVICE LEVELS:

Multnomah County has been a partner with the City of Portland for over 20 years in providing funding for the arts through the Metropolitan Arts Commission. The County has invested in programs for youth, families and the disadvantaged that have long term impact for our community. Millions of dollar in private support have been leveraged through public funding.

More recently, Multnomah County funding helped to leverage the first ever contributions from Metro, Clackamas County and Washington County as well as NEA and Oregon Arts Commission grants. These contributions were not intended to -- and could not replace Multnomah County funding. They made possible the extension of some programs and services into new jurisdictions and the development of partnerships needed to implement the regional funding package recommended by Arts Plan.

Negotiations towards a coherent and efficient regional support system continue, but full implementation will take at least 2 years. Multnomah County involvement and leadership is critical. The spirit of cooperation and momentum developed with elected officials, business and community leaders from around the region must be maintained.

The arts community is still in severe financial distress, stemming from historically low support from the public and private sectors. "Life support" funding must be maintained during the difficult 2 year transition to regional funding. Multnomah County's 20 year investment and ongoing funding is a critical piece of overall support during the delicate transition to the regional system proposed by Arts Plan.

CUTS:

In the two years of fiscal chaos and distress caused by Measure 5, the Metropolitan Arts Commission has already sustained a 30% cut, higher than any other County department. These cuts have serious repercussions for our programs and political relationships.

As a result of Arts Plan, the arts community made some headway for the first time in over a decade in developing new partnerships, leadership and support. These new partnerships and new leveraged dollars are seriously threatened by a reduction in support. Further cuts would seriously strain the 20 year partnership with the City of Portland and threaten new partnerships and new funding from Clackamas County, Washington County, Metro and the private sector. How can we convince our new partners to continue funding and political support if our oldest friends cut us off?

Since 70% of the Arts Commission's budget goes directly out the door in grants and public art commissions, any cuts are felt deeply and directly by the non-profit arts community. 5% and 10% cuts would cause significant decreases in grant awards to fragile, community based organizations who are providing the programs in schools, neighborhoods and social service settings that citizens say they want.

The Business Committee for the Arts has radically altered its Board, changed staff and has created a new business plan in order to boost both public and private support to levels which can sustain a critical community resource.

Small local arts councils in surrounding communities, run by volunteer citizen leaders, have been leery of urban dominance. They are just beginning to view Portland and Multnomah County as trusting partners and models for a joint, regional approach. Loss of Multnomah County funds would weaken or kill leverage for funds for these groups -- and the trust that we have built over the last three years.

The impact of cuts is severe for the delicate web of relationships among regional governments and the private sector that are needed to implement the regional funding package proposed by Arts Plan. Three years of groundwork, momentum and investment hangs in the balance.

Form **BUD 1**
LINE ITEM DETAIL

Appropriation Unit: **Metropolitan Arts Commission**
Fund: 101

<i>Expenditure Classification</i>	<i>Actual FY 90-91</i>	<i>Actual FY 91-92</i>	<i>Revised Budget FY 92-93</i>	<i>Target Request FY 93-94</i>	<i>Total Request FY 93-94</i>
511000 Full-Time Employees	\$220,441	\$240,540	\$299,436	\$261,932	\$331,044
512000 Part-Time/Limited Term	0	0	0	0	0
514000 Overtime	0	0	0	0	0
515000 Premium Pay	476	503	590	650	650
517000 Benefits	73,574	106,131	114,647	96,281	125,914
Total Personal Services	\$294,491	\$347,174	\$414,673	\$358,863	\$457,608
521000 Professional Services	\$100,335	\$2,649	\$4,070	\$4,000	\$4,000
522000 Utilities	0	0	0	0	0
523000 Equipment Rental	0	0	0	0	0
524000 Repair & Maintenance	2,257	3,482	2,590	2,200	2,200
528000 Local Match Payment	0	0	0	0	0
529000 Miscellaneous Services	770,388	655,187	964,741	516,306	849,100
531000 Office Supplies	2,045	2,951	5,723	3,200	4,700
532000 Operating Supplies	3,534	1,926	1,000	809	1,000
533000 Repair & Maint Supplies	0	0	0	0	0
534000 Minor Equipment	0	0	1,000	0	0
535000 Clothing	0	0	0	0	0
539000 Other Commodities	905	491	500	400	500
541000 Education	1,407	1,264	3,900	1,000	2,000
542000 Local Travel	0	0	0	0	0
543000 Out-of-Town Travel	6,080	6,526	7,043	3,000	3,000
544000 External Rent	0	0	0	0	0
545000 interest	0	0	0	0	0
546000 Refunds	0	0	0	0	0
547000 Retirement	0	0	0	0	0
549000 Miscellaneous	3,626	3,239	5,000	4,000	4,000
Total External Materials & Svcs	\$890,577	\$677,715	\$995,567	\$534,915	\$870,500
551000 Fleet Services	\$227	\$49	\$0	\$0	\$0
552000 Printing/Distribution	29,829	23,183	26,000	22,950	27,004
553000 Facilities Services	29,386	28,380	30,950	31,761	31,761
554000 Communications	7,528	6,173	10,458	9,480	11,153
555000 Data Processing	299	591	1,039	728	728
556000 Insurance	8,232	9,200	11,403	11,344	11,344
557000 Equipment Lease	0	0	0	0	0
558000 Same Fund Services	0	0	0	0	0
559000 Other Fund Services	0	0	0	0	0
Total Internal Materials & Svcs	\$75,501	\$67,576	\$79,850	\$76,263	\$81,990
Total Materials & Services	\$966,078	\$745,291	\$1,075,417	\$611,178	\$952,490
561000 Land	\$0	\$0	\$0	\$0	\$0
562000 Buildings	0	0	0	0	0
563000 Improvements	0	0	0	0	0
564000 Equipment	10,875	5,489	8,000	3,500	3,500
566000 Equipment Lease Purchase	0	0	0	0	0
Total Capital Outlay	\$10,875	\$5,489	\$8,000	\$3,500	\$3,500
573000 Equipment Cash Transfer	\$0	\$0	\$0	\$0	\$0
Total Appropriation	\$1,271,444	\$1,097,954	\$1,498,090	\$973,541	\$1,413,598

Benefits of the BACKYARD TREE FARM PROGRAM?

For a one time fee of \$35.00
participants will receive:



A comprehensive resource
packet of materials relating to planting
and pruning trees, attracting birds and
other wildlife, soils, and advice on how
to manage urban or rural property for
enjoyment.



A sign and certificate indicat-
ing a concern for and commitments to
improving and managing land are
given to BACKYARD TREE FARMERS.

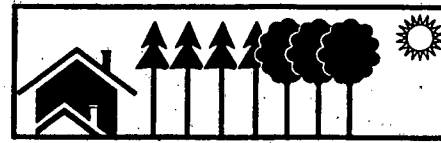


A one-year subscription to
"The American Tree Farmer," a na-
tional publication on forestry and
woodlot management, and a one-year
subscription to Northwest Woodlands
Magazine.



The opportunity to attend
workshops and field tours at reduced
rates in urban and rural areas to learn
land management techniques and con-
verse with other BACKYARD TREE
FARMERS.

BACKYARD TREE FARM



Who Sponsors BACKYARD TREE FARM PROGRAMS?

Four Soil & Water Conservation Districts (S.W.C.D.) are initiating this pro-
gram locally. They are:

- ◆ West Multnomah S.W.C.D.
- ◆ East Multnomah S.W.C.D.
- ◆ Clackamas S.W.C.D.
- ◆ Washington S.W.C.D.

The American Tree Farm System operates the program nationally. Tree Farmers
in the Tree Farm System are presently growing 95 billion trees on 95 million
acres.

There are no requirements or goals for forest production or harvesting. You do
not have to actively participate to be a member, but are encouraged to do so. The
basic requirements are expressing your intent to help maintain a healthy stand of

How Much Land Do You Need To Have A BACKYARD TREE FARM?

If you have less than 10 acres (even a city lot!) you can qualify. The information
provided works for acres of forest-lands or a small backyard.

If you have 10 acres or more you can qualify for Certified Tree Farm status.

MEMBERSHIP INFORMATION

I WANT TO BE A
BACKYARD TREE FARMER!

SPECIAL INTERESTS:

- ___ Tree Basics (planting, growing,
and caring for trees)
- ___ Urban Forestry
- ___ Rural Tree Farm
- ___ Woodcutting
- ___ Wildlife Habitat Improvements
- ___ Caring For Woodland Streams
- ___ Windbreaks
- ___ Fire Protection
- ___ Soil Erosion Control
- ___ Conserving Water
- ___ Water Quality
- ___ Woodland Recreation
- ___ Backyard Fruit Trees
- ___ Other: _____

I'M INTERESTED IN:

- ___ Workshops
- ___ Publications
- ___ Videos
- ___ Field trips
- ___ Other: _____

Membership Application

Please Print:

Date: _____

Name: _____

Address: _____

City: _____

County: _____

State: _____

Zip: _____

Acres: _____

Phone: _____

Make \$35 check payable to
your local soil and water
conservation district:

West Multnomah S.W.C.D.
Washington S.W.C.D.
Clackamas S.W.C.D.
East Multnomah S.W.C.D.



Creating community
forests for the future

Contact your local Soil & Water
Conservation District (S.W.C.D.) for
more information:

West Multnomah S.W.C.D.
2115 S.E. Morrison
Portland, OR 97214
231-2270

Washington S.W.C.D.
1080 S.W. Baseline
Building B, Suite B-2
Hillsboro, OR 97123
648-3014

East Multnomah S.W.C.D.
2115 S.E. Morrison
Portland, OR 97214
231-2270

Clackamas S.W.C.D.
256 Warner Milne Road
Oregon City, OR 97045
656-3499

What is the BACKYARD TREE FARM PROGRAM?

The BACKYARD TREE FARM PROGRAM provides information which will help you as a landowner learn more about your property, help you understand the environment in which you live, and help you manage your land for trees, wildlife, and other environmental benefits.

Why Should You Become a BACKYARD TREE FARMER?

Today, more than ever, Americans are concerned with such issues as tree planting, recycling, and the condition of our environment. The BACKYARD TREE FARM PROGRAM helps you learn how to manage your property to provide many environmental benefits and increase your enjoyment of the land.

The BACKYARD TREE FARM PROGRAM will provide you with pertinent, up to date information on how you can help the environment where it affects you the most, your own backyard. How-to articles will help you improve your property and create a more healthy and attractive environment.

BACKYARD TREE FARMERS Are Involved In:

Planting trees and shrubs
Urban forestry
Erecting birdhouses and feeders
Managing woodlots
Constructing trails and fences
Pond construction

Improving water quality
Christmas tree farming
Tree pruning
Erosion control
Sharing information
Creating wildlife habitat

EAST AND WEST MULTNOMAH SOIL AND WATER CONSERVATION DISTRICTS

CURRENT PROJECTS

FEBRUARY 1993

YOUTH EMPLOYMENT: Both Districts co-sponsored youth crews to work in local natural areas during the past five summers. In 1992 24 youth were employed and worked at Oaks Bottom and Balch Creek in Portland, Binford Lake in Gresham and on the Sauvie Wildlife Management Area.

EDUCATION: The District's summer work program for youth includes an education element where crews learn from local specialists in various areas of conservation.

Both Districts conduct annual workshops on various subjects regarding land management as a part of their Backyard Tree Farm Program.

Both Districts select an Conservation Educator of the Year and award them at a County Commission Meeting.

GRANTS: The Districts are currently working on several grants:

METRO for Balch Creek	\$16,000
Oregon Dept of Agriculture (ODA)	19,225
METRO and ODA grants helped fund youth crews and restoration projects on Balch and Miller Creek in Forest Park	
Governor's Watershed Enhancement Board (GWEB)	26,650
Restoration projects along Fairview Creek	
GWEB: Centennial High School	1,100
High school students are monitoring several points along Fairview Creek	
GWEB: David Douglas High School	900
High school students are monitoring water quality at Beggar's Tick Marsh (Johnson Creek)	
GWEB: Metropolitan Learning Center	2,000
High school students are creating a nurse log on the school grounds	
ODA: (Co-sponsor) Tualatin River	12,000
Education of agriculture land owners along the Tualatin River	

ODA:

6,675

METRO:

12,275

Both ODA and METRO grants are being used for restoration projects in the Binford Lake/ Butler Creek area in Gresham

OYCC/PIC: Funding for youth crews

Both Districts are currently applying for several grants.

LOCAL INVOLVEMENT: The Districts have had a booth at several local events to hand out information on conservation.

Much of the Districts work is facilitating coordinated resource management plans with local governments, citizens, and organizations to resolve issues through consensus (Fairview Creek Committee, Sauvie Island Wildlife Management Area Plan, Oaks Bottom Management Plan).

West Multnomah SWCD has been instrumental in organizing and promoting the Backyard Tree Farm Program in the Portland metro area.

Both Districts select a Cooperator of the year and award them at a County Commission Meeting.

FAIRVIEW CREEK WATERSHED CONSERVATION PLAN

A Coordinated Resource Management Plan

GOAL: The Fairview Creek Watershed Conservation Group is committed to the development and implementation of a plan to protect and enhance livability and natural resources within the Fairview Creek Watershed.

September 1992

**Prepared by:
Fairview Creek Watershed
Conservation Group**

INTRODUCTION

In September 1990 a public meeting was held at the Lake House in Blue Lake Park to assess public interest in protection and enhancement of Fairview Creek watershed. The following concerns were voiced by participants:

- Flood Control
- Water Quality Improvement
- Soil Erosion and Sedimentation Control
- Streambank Stabilization
- Fish and Wildlife Habitat Enhancement
- Conservation Education (citizens and kids)
- Balancing Regulation/Enforcement and Voluntary Compliance
- Recreational Opportunities
- Guidelines for Future Development and Zoning
- Long-term Monitoring
- Maintaining Stream Flow
- Identification, Protection and Enhancement of Wetlands
- Achieving Cooperation and Commitment by all parties for Long Term Management

Subsequently, local citizens, landowners, and concerned public and private agency representatives formed the Fairview Creek Watershed Conservation Planning Group. Using the coordinated resource management planning process, the group agreed to work together to develop a plan to address the concerns voiced by citizens and to protect and enhance Fairview Creek.

During the past two years, while the plan was being written, the committee began action. Already completed are several creek inventories, three public meetings, a teachers' workshop, water quality studies, a brochure draft, and funding from the Governor's Watershed Enhancement Board for planned demonstration projects including a wetland enhancement and streambank plantings.

The following Action Plan is the result of diverse groups working together to accomplish mutual goals for the watershed. It is divided into three sections: Education, Habitat Enhancement, and Watershed Management. It is an informal plan intended to be responsive to current needs and will be subject to changes and additions as needed. Questions or other responses may be directed to the East Multnomah Soil and Water Conservation District, 2115 S. E. Morrison, Portland, Oregon 97214, 231-2270.

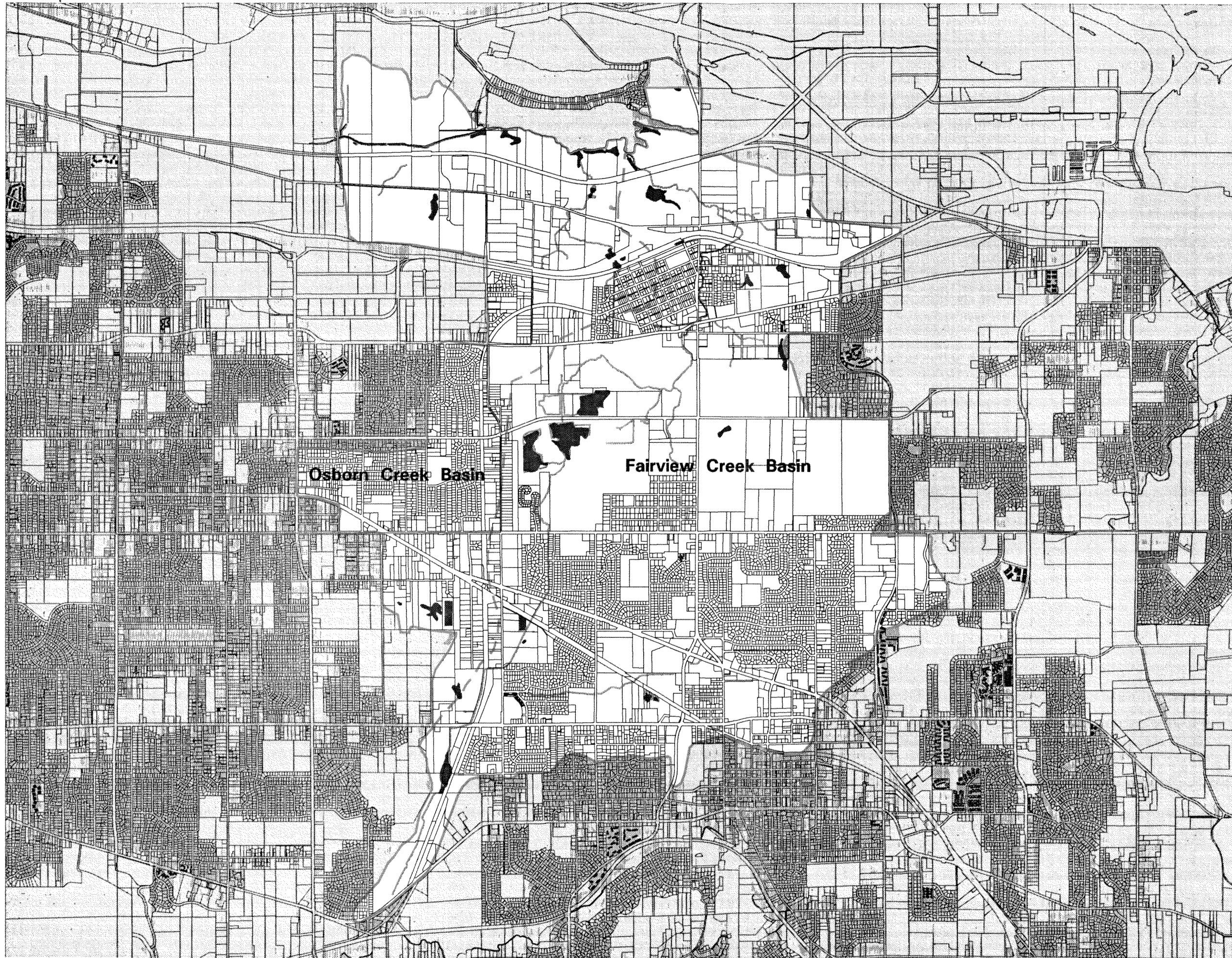
KEY PARTICIPANTS

Streambank Residential

Property Owners (Represented by):

City of Gresham
City of Fairview
Fujitsu Microelectronics, Inc.
Friends of Fairview/Blue Lakes
Interlachen Neighborhood Assn.
Reynolds School District
East Multnomah Soil and Water Conservation District
Multnomah County Parks
Multnomah County
Oregon Dept. of Fish and Wildlife
METRO
U. S. Soil Conservation Service
The Wetlands Conservancy
Bureau of Land Management (Facilitator)

Anne Andrews, Gresham
Roy Hoover, Fairview
Mel Miracle
Nancy DiDonato
Linnea Nelson
Jane Graybill
Jean Ridings
Georgeen Penketh
Shirley Boothby
Todd Jones
Ron Wong
Doug Cottam
Rosemary Furfey
Steve Fedje
Linda Robinson
Hugh Barrett



R L I S

Regional Land
Information System

Fairview Creek Watershed

Wetlands

 Wetlands

Metropolitan Service District
2000 SW First Avenue
Portland, OR 97201-5398
(503) 221-1646

METRO

FAIRVIEW CREEK WATERSHED CONSERVATION ACTION PLAN

EDUCATION

Objective: To develop individual, community, and industrial responsibility for the care, improvement, and protection of Fairview Creek and the watershed that supports it:

WHAT	WHERE	WHO	FUNDS	WHEN
1. Develop a Fairview Creek brochure following Audubon's urban stream series format	Watershed wide distribution	Brochure Sub-committee (Linnea Nelson Linda Robinson Nancy Didinato Lori Hopkins)	Grants Donations	93
2. Conduct workshops & public relation campaign for GWEB demonstration streambank plantings	Close to sites, & in watershed	EMSWCD Gresham CRMP Group Landowners	GWEB Grant	92-93
3. Work with media to inform public about local natural resources	Gresham Outlook Oregonian Newsletters Cable Access	CRMP Group Project Leaders		91-93
4. Hold Annual Fairview Creek Forum Public Meetings	Within Fairview Creek Watershed	CRMP Group		9/90 2/91 10/92
5. Plan for Creekside Signs	Creek crossings	CRMP Sign sub-committee	Grants Donations	1993
6. Trash Cleanup	Along Creek	SOLV (Linda Robinson)		1993 Annually
7. Streamwalks	Along Creek	Bruce Tolonen Rosemary Furfey		4/92 10/93
8. Assist cities w/Storm Drain Stenciling	Fairview Gresham	CRMP Youth Groups		Summer/92

WHAT	WHERE	WHO	FUNDS	WHEN
9. Walks/Carpool	Watershed	METRO'S Trip into Nature (Anna Andrews Doug Cottam Bruce Tolonen)		92-93
10. Work with Conifer Park Homeowners Assoc. to improve stream banks	Conifer Park Development	(Linnea Nelson)		92-94
a. Attend Mtg				
b. Facilitate Neighbor- hood Plan				
11. Work with Schools				
a. Teacher Workshop for local teachers	Fairview City Hall	EMSWCD	ODA Grant	10/91
b. Work w/Teachers		EMSWCD		
12. Mt Hood Comm. Brown Bag Lunch Presentation	MHCC (w/slides)	(Anna Andrews/ Linda Day)		Fall 92 Fall 93
13. Develop a Photo Display	City/Library Jazz Kick-off Gresham City Park (Booth) Other Local Businesses	Photo/Exhibits Sub-Comm.		93-94 93 Annually
14. Chamber of Commerce Civic Club Presentations		CRMP Group		1993
15. City of Gresham/ Fairview Council Presentation Update		CRMP Group		Annually

FAIRVIEW CREEK WATERSHED CONSERVATION ACTION PLAN

HABITAT ENHANCEMENT

Objective: To protect, manage, restore and enhance habitat associated with Fairview Creek to preserve water quality & quantity & enhance fish & wildlife habitat while allowing human use.

WHAT	WHERE	WHO	FUNDS	WHEN
1. Establish & conduct appropriate stream inventories, using EPA, DEQ & ODF&W standards to determine actual and potential use by fish & wildlife	Headwaters to Fairview Lake	CRMP EMSWCD	Grants	91-93
a. Based on past surveys, schedule summer & future surveys to collect data needed	Same	CRMP		92
b. Determine additions needed to EPA Streamwalk Data Sheet for future surveys & select critical sites to be surveyed on a regular basis	Headwaters Birdsdale Glisan Country Inn 126th & Sandy	ODF&W Shirley Boothby Anna Andrews		
c. Use survey data to determine stream-bank work needed - by sites	(to be selected)	EMSWCD/ CRMP ODF&W		92

WHAT	WHERE	WHO	FUNDS	WHEN
d. Evaluate need for further inventories	Fairview Lake	Friends of Blue and Fairview Lakes		92
	Creek tributaries (Osburn, No Name Creeks)	CRMP Group		93
2. Identify areas significant to wildlife & for human recreation				
a. Use the Mult County Land Use Plan & LCDDC Goal 5 Inventory as well as data gathered in #1 above to develop habitat design using local zoning data to determine appropriate use	Watershed	ODF&W (Doug Cottam) Habitat Committee		92
(1) Delineate areas where zoning use prohibits change				92
(2) Determine potential restoration areas				92
b. Determine potential recreation sites				92
3. Identify land use practices detrimental to the habitat & suggest alternative practices	Sites to be identified			92
a. Use inventory data & on-site visits to map areas of concern				92-93

WHAT	WHERE	WHO	FUNDS	WHEN
b. Develop plan to inform & provide appropriate help to land managers				92-93
c. Develop demonstration restoration projects			GWEB Grant	92-93
(1) Residential - streambank plantings	207 at Morrison Main Sts.		GWEB	
(2) Business - Streambank plantings	Country Inn 223rd & Halsey			
(3) Public - Gresham Park wetland restoration	Headwaters 181st & Powell		GWEB	92-93
d. Plan revegetation projects along creek				93
(1) Survey/recruit landowners for interest/co- operation				
(2) Find funding source and local support				

FAIRVIEW CREEK WATERSHED CONSERVATION ACTION PLAN

WATERSHED MANAGEMENT

Objective: Restore and protect the health and functions of the watershed through coordinated action to improve water quality, enhance the quality of life, maintain streamflow, protect public health and safety, and restore and protect fish and wildlife habitat.

WHAT	WHERE	WHO	FUNDS	WHEN
1. Establish inventory/ data base/library of resource information and maps related to Fairview Creek Watershed	EMSWCD District Office	CRMP EMSWCD Local jurisdictions ODF&W METRO	Use existing data/ studies	91-93
a. Based on past studies and surveys, collect information and compile resources into one library. These include:	EMSWCD District Office	CRMP EMSWCD Local jur. METRO ODF&W	Use existing data	91-93
-Fish & Wildlife habitat inventory		ODFW		
-Watershed boundary		METRO		
-Flood plain		local jurisdictions		
-Open space		local jurisdictions		
-Impervious surface		local jurisdictions		
-Topographic maps		USGS		
-Land use & vegetation		local jurisdictions, METRO		
-Zoning		local jurisdictions, METRO		
-Wetlands		local jurisdictions, METRO		
		LCDC, DEQ, DSL, COE		
-Sewers & storm drains		local jurisdiction		
-Groundwater aquifers		USGS, DEQ, EPA, City of Portland		
-Cultural & historical		historical societies		
-Regulations/ordinances		local jurisdictions, DEQ, DWR		
-Location of well heads		SCS, DEQ, EPA, City of Portland		
-Soils		SCS, DEQ		

WHAT	WHERE	WHO	FUNDS	WHEN
b. Evaluate data, identify need for additional data and sources and plan for inclusion in library		CRMP		92-93
c. Make information compiled available to Fairview Creek Watershed homeowners, businesses, land managers and potential land managers		CRMP		93
2. Identify water quality and stream flow problems in the watershed		CRMP Public		92-93
a. Investigate possibility of "summit" meeting of all interested citizens, conservation groups, agency, and local government representatives		CRMP		92-93
b. Public forums		CRMP		
3. Identify cause(s) of problems: Land use impacts Stormwater Point source pollution Erosion/sedimentation Spills/illegal discharge		CRMP public local jurisdictions		
4. Identify resource agencies, jurisdictions and stakeholders to involve in watershed strategies and problem solving		CRMP		

WHAT	WHERE	WHO	FUNDS	WHEN
5. Develop strategies and solutions to address problems working with all stakeholders and citizens in the watershed a. Work with developers, residents, and small businesses to present methods and new ideas to best protect the creek/watershed prior, during, and after construction b. Identify ways for property owners to alleviate storm drain problems in a fashion that would meet local code c. Work with farmers to develop methods to increase natural resource protection while sustaining productivity		CRMP all stake- holders public	grant	93
6. Support on-going technical and research projects	Fairview watershed	CRMP		
7. Monitor action plan and new projects to evaluate effectiveness in achieving goals and make necessary changes	Fairview watershed	CRMP		

GLOSSARY

COE:	U. S. Army Corps. of Engineers
Conifer Park:	A homeowners association in the Fairview Creek watershed.
CRMP:	Coordinated Resource Management Plan: A plan created by a diverse group by reaching consensus on natural resource issues.
DEQ:	Oregon Department of Environmental Quality
DSL:	Oregon Division of State Lands
DWR:	Oregon Department of Water Resources
EMSWCD:	East Multnomah Soil and Water Conservation District
EPA:	U. S. Environmental Protection Agency
GWEB:	Governor's Watershed Enhancement Board
LCDC:	Land Conservation Development Commission
METRO:	Regional government including Clackamas, Washington and Multnomah County. Oversees the Washington Park Zoo, bus transportation, the Greenspaces program...
ODF&W:	Oregon Department of Fish and Wildlife
OYCC:	Oregon Youth Conservation Crews
SCS:	U. S. Soil Conservation Service
SOLV:	Stop Oregon Litter and Vandalism

FAIRVIEW CREEK WATERSHED CONSERVATION PLAN
September 1992

Fairview Creek Watershed Conservation Planning Group is committed to the implementation of our plan to protect and enhance liveability and natural resources within the Fairview Creek Watershed. The undersigned agree to participate in a cooperative effort to carry out this plan:

NAME

ORGANIZATION REPRESENTED

Shirley Boothby

East Mult. Soil & Water Cons. District

Steven Lyle

SOIL CONSERVATION SERVICE

Jane Graybill

Blue & Fairview Lake Land Trust

Joan M. Ridings

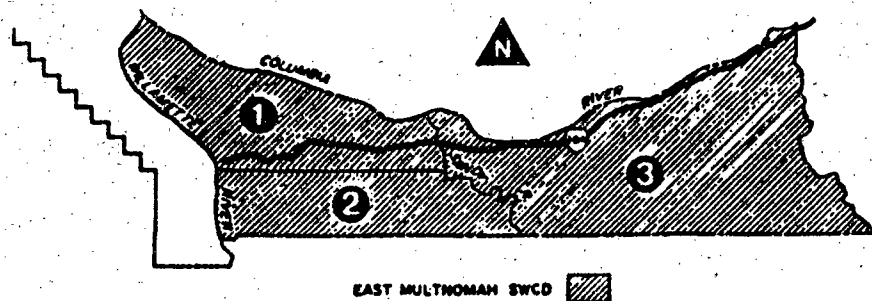
Interlachen, Inc. Homeowners Assoc.

Ray D. Harver

Fairview Creek Landowner

Ken Hargis

Multnomah County



DISTRICT DIRECTORS:

ZONE 1: Jerome Fulton
 ZONE 2: Merlyn "Pete" Smith
 ZONE 3: Nick Kerlake
 At Large: Dianna L. Pope
 Shirley Boothby

FINANCIAL REPORT

Beginning Cash Balance: 26,491.54

INCOME:

State of Oregon	2,067.00
Multnomah County	9,020.50
Oregon Dept. of Ag. (ODA)	2,380.00
Interest	1,028.09

GRANTS:

Oregon Youth Cons. Corps	1,800.00
GWEB Landowner's Booklet	12,135.20
GWEB Oaks Bottom	6,450.09
ODA Oaks Bottom	1,200.00
ODA Binford Lake	3,337.00
City of Portland OYCC	2,752.00
ODA Stream Corr.	3,414.25

TOTAL INCOME: 45,584.13

TOTAL ASSETS: 72,075.67

EXPENDITURES:

Payroll	11,483.43
Legal/Auditing	30.00
Printing/Advertising	72.64
Dues/Memberships	2,110.00
Insurance	1,500.00
Conference	1,931.94
Office Supplies	539.85
Travel/Mileage	100.94
Postage	857.96
OYCC Supplies	181.38
Education	19.95
Awards	75.00

GRANTS:

Oaks Bottom	20,450.00
GWEB Landowner's Booklet	11,644.62
Stream Corr.	3,825.86
Fairview Creek	2,000.00
OYCC	2,538.57

TOTAL EXPENDITURES: 59,362.14

ENDING CASH BALANCE 12,713.53

GOALS

July 1992-June 1993

Provide technical and planning assistance to cooperators.

Facilitate Coordinated Resource Management Plan for Fairview Creek.

Complete GWEB Demonstration Project on Fairview Creek.

Sponsor Youth Conservation Corps Program with the City of Gresham, Troutdale, and Portland.

Participate in Johnson Creek planning process.

Continue working with Oaks Bottom CRMP Group.

Develop and prioritize project list based on Stream Corridor data. Research funding resources for projects.

Select and honor local conservation teacher, cooperator, and volunteer.

Provide information on opportunities on natural resource education and grants to teachers.

OAKS BOTTOM: The completion and the dedication of the Oaks Bottom control structure was the highlight of four years of planning and fund raising. Over \$20,000 came through the District via grants from Oregon Department of Agriculture and the Governor's Watershed Enhancement Board.

City officials participated in the 1991 dedication. The 100 foot long dam is expected to improve wetland wildlife habitat in the refuge.

STREAM CORRIDOR INVENTORY: The District received additional funding from the Department of Agriculture. This funded a teacher workshop in October. The focus of the workshop was to demonstrate to teachers how local watersheds can be used as a classroom tool.

The Stream Inventory Report pointing out troubled areas to agencies and land managers was also publicized through this funding.

FAIRVIEW CREEK CRMP: The District worked with the Coordinated Resource Management Planning Group to adopt a plan for Fairview Creek.

DISTRICT ACCOMPLISHMENTS

JULY 1, 1991 -
JUNE 30, 1992

EAST MULTNOMAH SOIL AND WATER CONSERVATION DISTRICT

1991 - 1992
ANNUAL
REPORT

FAIRVIEW CREEK DEMONSTRATION PROJECT: The District was awarded a \$26,650 grant from the Governor's Watershed Enhancement Board for three demonstration projects along the creek. The projects include restoring a wetland in the City of Gresham's Southwest Park, homeowner's and businesses revegetation project along creek banks, and an educational component being developed by high school science teachers. These projects will be complete in fall of 1993.

OREGON YOUTH CONSERVATION CREWS: As part of our ongoing priority of working with youth to promote conservation, the District and the City of Gresham Parks Dept. co-sponsored two youth crews for eight weeks. These crews worked at Binford Lake/Butler Creek in Gresham creating and maintaining trails, building and installing bird boxes and revegetating areas with native plant species.

LANDOWNERS BOOKLET: With West Multnomah SWCD and funded by GWEB, we developed a resource booklet for small acreage landowners. It lists agencies and information available to help with specific conservation problems.

TECHNICAL ASSISTANCE:
350 acres in conservation plans

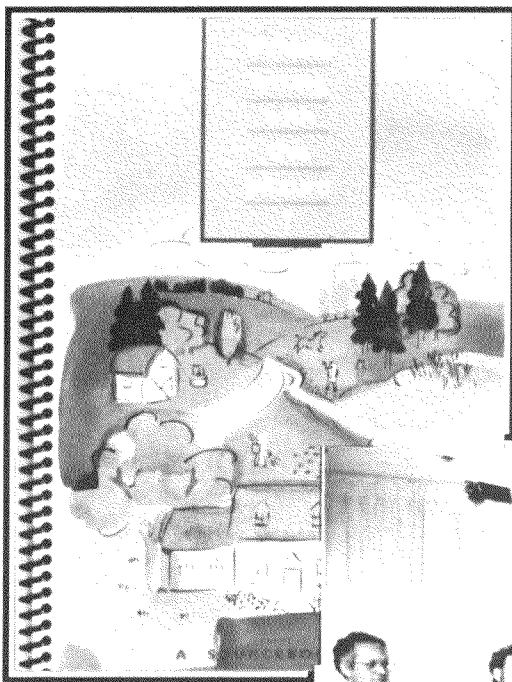
48 received assistance

32 government agencies assisted

West Multnomah

Soil and Water Conservation District

1991- 1992 Annual Report



Mission Statement: To conserve, protect and develop soil and water resources; to help with the development of all natural resources in the west county for the benefit of the people, wildlife and the environment.



Teacher Of The Year

.....

Barbara Stross, a high school science teacher at Metropolitan Learning Center, has worked with the District the past several years. Her enthusiasm for teaching natural resource awareness was a large part of why West Multnomah SWCD selected her as their "Teacher of the Year".

Barbara has used Balch Creek as a resource to study wetland and watershed environments and ecological systems. Student activities include site studies along the creek, learning and practicing stream monitoring techniques, soil and erosion studies, and monitoring a tree planting study in cooperation with the U. S. Forest Service.

Barbara has been a teacher at MLC for eight years. She is active in the Portland Public Schools Science Club, where she shares curriculum ideas and her work with Environmental Protection Agencies Streamwalk Program with other teachers.

District Accomplishments

July 1, 1991 - June 30, 1992

Sauvie Island Wildlife Management Area: The District co-sponsored meetings with Oregon Department of Fish and Wildlife (ODFW) to revise the Sauvie Island Wildlife Management Plan. The process began with a public meeting in August 1991 and after several meetings and a tour of the management area, a final draft plan was developed. The final draft plan was made available to the public for comment in August 1992, and is scheduled to go before the Oregon Department of Fish and Wildlife Commission in January 1993 for their adoption.

The District was successful in receiving several grants totaling over \$60,000:

➔ \$10,890 was received from the Governor's Watershed Enhancement Board (GWEB) to help finance youth crews working in Balch Creek in the summer of 1991. This grant also funded a watershed education program for children developed by Portland Audubon. The District was also able to support Metropolitan Learning Center's high school students in their on-site education program on Balch Creek.

➔ The District received \$16,000 from a METRO grant that helped finance summer

youth crews for work in Balch Creek in 1992. This grant also was used to co-sponsor a tree planting in Balch Creek during December 1991 with Friends of Trees.

➔ A grant for \$19,225 from the Department of Agriculture funded an additional summer youth crew in 1992. The crew worked in Balch Creek, Miller Creek, and on the Sauvie Island Wildlife Management Area.

➔ Stream Corridor Inventory: The District received additional funds from the Oregon Department of Agriculture to develop a database of forest land owners living in the Miller, Rock and McCarthy Creek watershed. This grant was also used to define projects for youth crews on the Sauvie Island Wildlife Management Area.

➔ Landowners Booklet: Co-sponsored with East Multnomah Soil and Water Conservation District and funded by the Governor's Watershed Enhancement Board, the District developed a resource booklet for small acreage landowners. It lists agencies and information available to help with specific conservation problems. Booklets are free and available at the District Office.

Cooperator Of The Year

.....

District directors selected Fred Cholic as this year's Cooperator of the Year. Fred runs a diversified farming operation with son-in-law Lynn Trupp on a 274 acre farm on Sauvie Island. His primary crop is potatoes, which he raises for Frito Lay for chips. He also helps manage approximately 100 cow-calf pairs, 300 steers, and over 400 head of sheep with Lynn.

Fred has been an active Conservation District cooperator since the early 1950's and has practiced good soil and water conservation management for many years. Fred says "At the time of my original conservation plan (developed by the Soil Conservation Service) I didn't believe in many of the ideas but over the years it's been good advice and proved to be true. I believe in good conservation planning and management".

West Multnomah Soil and Water Conservation District proudly applauds the efforts of cooperators like the Cholic family for their efforts in conservation planning and management.

Need Assistance? The Following Agencies Serve Your Area.

Federal Agencies

- ☐ Corps of Engineers (U.S. Army)
PO Box 2946 — [333 SW First Ave.]
Portland, OR 97208-2946
326-6995
- ☐ Forest Service; Columbia Gorge
902 Wasco Avenue; Suite 200
Hood River, OR 97031
386-2333

State Agencies

- ☐ Columbia River Gorge Commission (Bi-State)
PO Box 730 — [288 E. Jewett Blvd.]
White Salmon, WA 98672
(509) 493-3323
- ☐ Division of State Lands (DSL)
775 Summer Street NE
Salem, OR 97310
378-3805
- ☐ Scenic Rivers Program; Parks & Rec. Dept.
525 Trade Street SE
Salem, OR 97310
378-6305
- ☐ Oregon Dept. of Agriculture
635 Capital Street NE
Salem, OR 97310-0110
378-3810
- ☐ Oregon Department of Water Resources
3850 Portland Road NE
Salem, OR 97310
378-3773
- ☐ Oregon Dept. of Fish & Wildlife
PO Box 59 —
[2501 SW First Avenue]
Portland, OR 97207
229-5410
- ☐ Dept. of Geology & Mineral Industries
800 NE Oregon Street; Suite 965
Portland, OR 97232
731-4100
- ☐ DLCD (Land Conservation & Development)
320 SW Stark Street
Portland, OR 97204
229-6068

Oregon Department of Transportation (ODOT)

- ☐ ODOT Region One: Planning Rep.
9002 SE McLoughlin Blvd.
Milwaukie, OR 97222
653-3224
- ☐ ODOT (East County District Office)
999 NW Frontage Road, Suite 250
Troutdale, OR 97060
665-4006
- ☐ ODOT (Mid-County District Office)
PO Box 1339 — [9200 SE Monfield Road]
Clackamas, OR 97015
653-3086
- ☐ ODOT (West County District Office)
2131 SW Scholls Ferry Road
Portland, OR 97221
229-5002

Oregon Department of Forestry

- ☐ Forest Grove District (West Hills/Sylvan)
801 Gales Creek Road
Forest Grove, OR 97116
357-2191
- ☐ ODF Columbia Unit (NW Hills/Sauvie Island)
405 'E' Street
Columbia City, OR 97018
397-2636
- ☐ Clackamas-Marion Dist. (East County)
41225 SE Vista Loop
Sandy, OR 97055
668-4646

Local Agencies

(County, Special Districts)

- ☐ County Transportation Div.
Engineering Services & Road Maintenance
1620 SE 190th Avenue
Portland, OR 97233
248-5050

- ☐ County Right-of-Way Permits
2115 SE Morrison Street
Portland, OR 97214
248-3582
- ☐ Mid-County Sewer District
PO Box 16887 -325 NE 122nd
Portland, OR 97216
823-4114
- ☐ Septic or Sanitation Permits
1120 SW Fifth Ave. Room 930
Portland, OR 97204
823-7790
- ☐ Multnomah County Surveyor
1620 SE 190th Avenue
Portland, OR 97233
248-3600
- ☐ Assessment & Taxation: County Recorder
610 SW Alder Street
Portland, OR 97205
A&T: 248-3345
Recorder: 248-3034
- ☐ Portland Planning Bureau: City Zoning
1120 SW Fifth Ave.
[Permit Center; 1st floor]
Portland, OR 97204
823-7526
- ☐ Multnomah County Planning Department: Zoning
2115 SE Morrison Street
Portland, OR 97214
248-3043

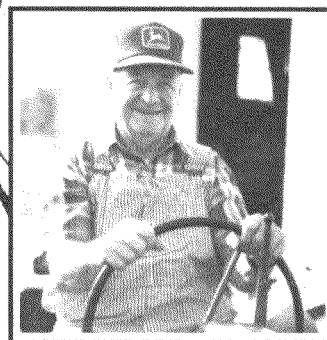
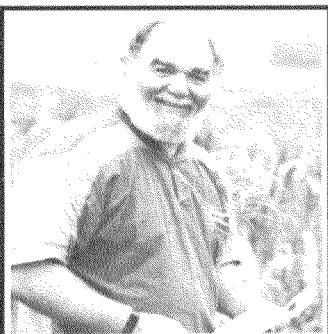
Building Permits; Electrical & Plumbing Codes

- ☐ Portland Building Bureau
1120 SW Fifth Ave.
[Permit Center; 1st floor]
Portland, OR 97204
823-7310
- ☐ Gresham Building Department
1333 NW Eastman Parkway
Gresham, OR 97030
661-3000
- ☐ Troutdale Building Depart.
104 SE Kibling Street
Troutdale, OR 97201
665-5175

West Multnomah Soil & District

Water Conservation Board

Zone 3 is represented by Joe Lucas who owns Northwest Rubber Extruders. Joe played a major role in the completion of the Dairy Creek Project on Sauvie Island and continues to represent the Board on the Sturgeon Lake Management Council.

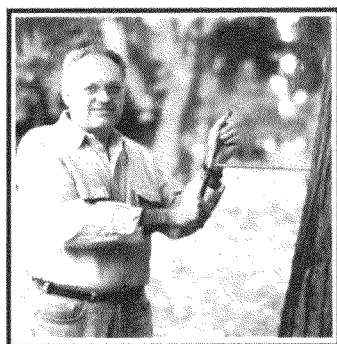


Zone 1 is represented by Elmer Peterson, who has been on the board since 1948. Although he claims he's retired, he is still very active on his farm and in Reno (his other business venture).

Jane Hartline, representing Zone 4, is the Marketing Manager for METRO Washington Park Zoo and also serves on the boards of Portland Audubon and The Nature Conservancy. Jane raises sheep on Sauvie Island and was instrumental in the development of the Landowners Booklet.

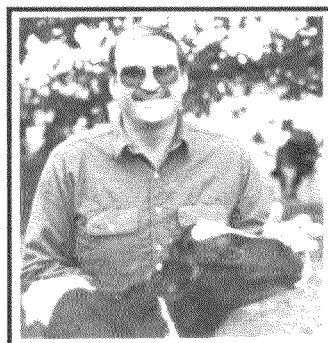


Karin Hunt, representing Zone 2, has been on the board since 1988. She is also on the Multnomah County Planning Commission and founded the Skyline Neighborhood Association.

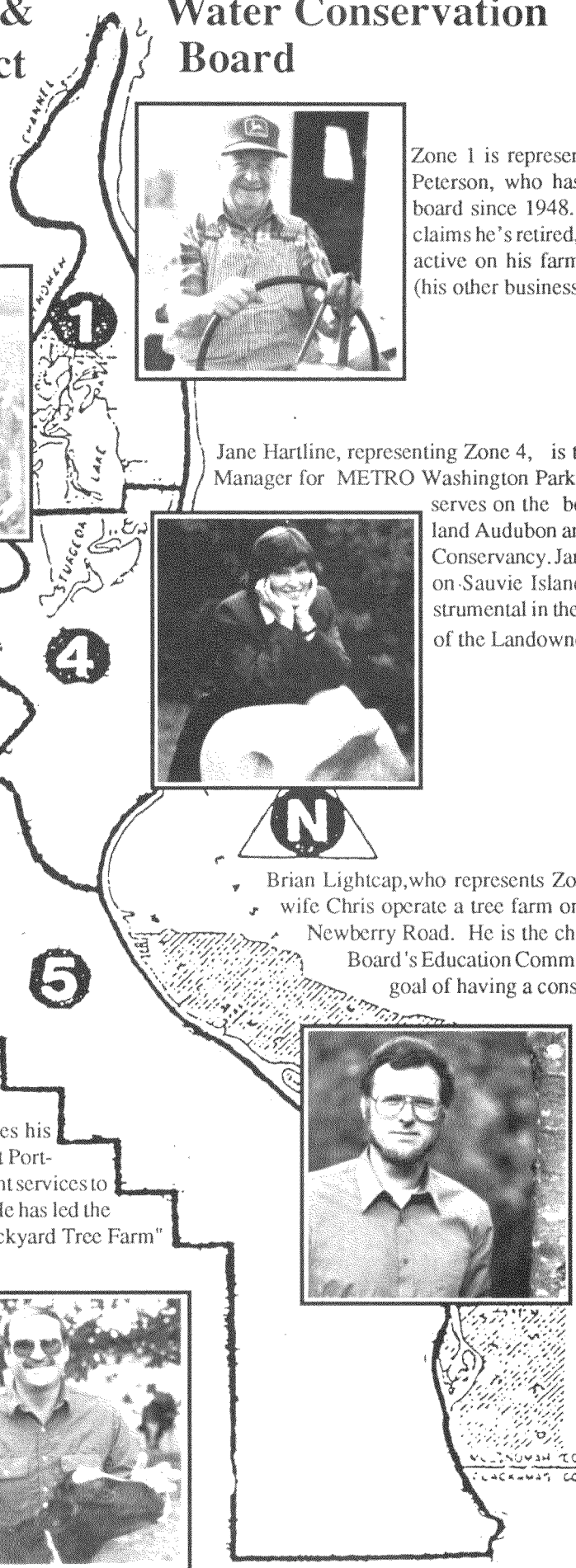
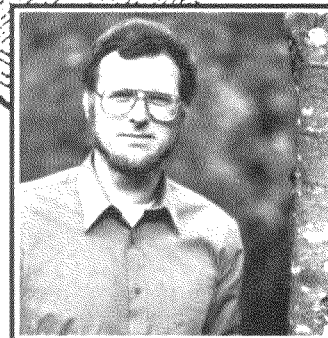


Richard Courter, a professional consulting forester honored in 1992 as Oregon's "Forester of the Year", manages his own tree farm in northwest Portland and offers management services to other forest landowners. He has led the effort to establish the "Backyard Tree Farm" Program in Oregon.

Robert Vetsch and his father Richard manage a 120 milking cow dairy on Sauvie Island, which is the last remaining dairy farm in West Multnomah County. His main interest on the board is water quality and confined animal feeding operations. Currently he is the chair of the board.



Brian Lightcap, who represents Zone 5, and his wife Chris operate a tree farm on 54 acres off Newberry Road. He is the chairman of the Board's Education Committee and has a goal of having a conservation education project for every school in the county.



FINANCIAL REPORT

JULY 1, 1990 - JUNE 30, 1991

INCOME

Beginning Balance	\$20,670.59
District Income	
ODA Funding 1990-91	\$2,067.00
Multnomah County 1990-91 budget	\$9,020.50
Interest	\$1,194.15
Affiliate members	\$1,305.00
Backyard Tree Farm	\$315.00
ODA Administrative funds	\$2,380.00
subtotal - District Income	\$16,281.65
Grant Income	
OYCC Portland Funding	\$2,000.00
GWEB Balch Creek Grant	\$9,801.00
ODA Balch/Miller Creek Grant	\$9,612.50
GWEB Landowners Booklet	\$12,687.77
OYCC Funding	\$6,421.00
Stream Inventory Grant (ODA)	<u>\$3,205.00</u>
subtotal - Grant Income	\$43,727.27
Total Income 1991-92	\$60,008.92
Total	\$80,679.51

EXPENSES

Director Expenses	\$66.94
Annual Meeting	\$21.36
Awards	\$75.00
Conferences / Conventions	\$1,116.28
Dues	\$1,237.50
Equipment	\$311.96
Education	\$816.14
Insurance/Bonds	\$250.00
Legal / Auditing	\$30.00
Mileage	\$138.10
Payroll / District Business	\$8,804.78
Postage	\$673.43
Printing / Advertising	\$158.46
OYCC	\$298.15
Backyard Tree Farm	\$354.87
Supplies	<u>\$382.30</u>
subtotal - District Expense	\$14,735.27
Grant Expenses	
OYCC Grant	\$6,318.93
METRO Balch Creek	\$1,000.00
Miller/Balch Creek (ODA)	\$2,852.34
Balch Creek (GWEB)	\$10,399.77
Stream Inventory Grant (ODA)	\$3,205.00
Landowners Packet (GWEB)	<u>\$13,553.64</u>
subtotal - Grant Expense	\$37,329.68
Total 1990-91 Expenses	\$52,064.95
Ending Balance	\$28,614.56

District Goals

- ✿ Complete METRO, Oregon Department of Agriculture grants on Balch/Miller Creek.
- ✿ Develop an operation and maintenance plan for Sturgeon Lake and find funding for implementation.
- ✿ Provide planning and technical assistance for conservation plan development and project implementation for West Multnomah SWCD cooperators.
- ✿ Co-sponsor, with Metropolitan Learning Center, a Governor's Watershed Enhancement Board grant for a conservation education project.
- ✿ Sponsor an informational workshop for landowners.
- ✿ Participate in Zoo Pow-Wow Day.
- ✿ Continue participation on the Sturgeon Lake Management Council for operation and maintenance and the monitoring of Sturgeon Lake Restoration Project.
- ✿ Work with Oregon Department of Fish and Wildlife to develop projects for Oregon Youth Conservation Corp on the Sauvie Island Wildlife Management Area.
- ✿ Facilitate the Tri-County Community Forestry Program which includes the Backyard Tree Farm Program.
- ✿ Co-sponsor Oregon Youth Conservation crews with City of Portland Parks.

*Please come join us for
West Multnomah Soil & Water Conservation Districts'
Annual Meeting, Tree Planting and Balch Creek Clean-up.*

Saturday, December 19, 1992

8:00 a.m.- 9:00 a.m. Brief meeting and refreshments

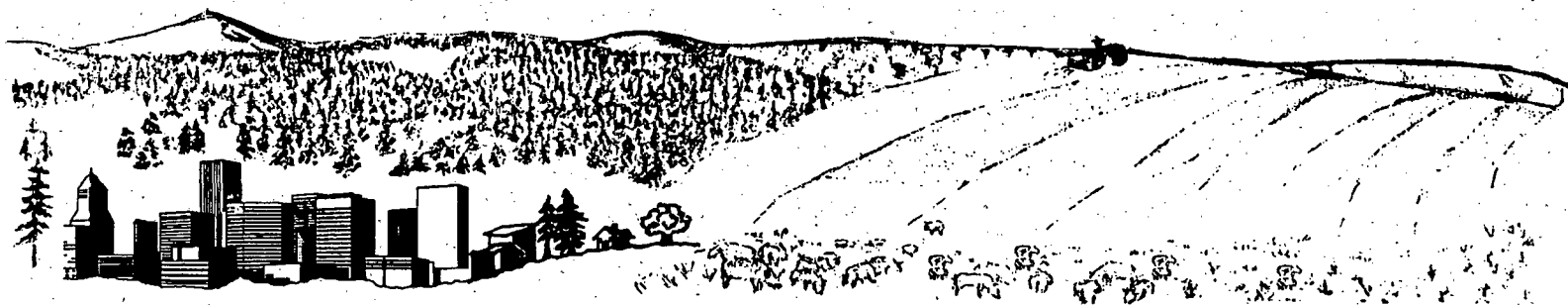
9:00 a.m.- 12:00 p.m. Tree planting and clean-up of Lower Macleay Park

Meet at Lower Macleay Park

One block west of 29th and Upshur.

*Come warm up with us at 8:00 a.m. with hot drinks and goodies to support
the effort of maintaining this natural area. Even if
your unable to participate in the planting and clean-up, we would love to
see you and share what the District is doing. We need your input!*

This effort is being Co-sponsored by Friends of Trees and SOLVE.



West Multnomah S.W.C.D.
2115 S.E. Morrison
Portland, OR 97214

NON-PROFIT.ORG.
U.S. POSTAGE
PAID
PORTLAND, OR
PERMIT NO. 463