



Board of County Commissioners

**Project Update
February 25, 2014**

Agenda

- Project Dashboard
- Equity Dashboard
- Construction Update

Schedule Milestones

	Estimated Completion	Status
- 90% Miles Place/Mac. Bay	November '13	Complete
- 95% Miles Place/Mac. Bay	February '14	Complete
- Project GMP	March '14	On-going
- 100% Miles Place/Mac. Bay	March/April '14	On-going
- Maintenance IGA	Spring '14	On-going
- In-water work extension	Spring '14	On-going
- Metro Agreement	Summer '14	On-going

Recent & Upcoming Meetings and Board Actions

- BCC Briefing	12/3/13
- BCC Briefing	2/25/14
- BCC Briefing	4/29/14
- BCC Briefing	6/24/14
- BCC Briefing	8/19/14

Public Involvement

Thru Dec/Jan 2014

- Scheduled meeting with Macadam Bay residents, relocated driveway
- Organized bridge tours for news media and public groups
- Provided bridge closure & traffic updates
- Kept bridge neighbors informed of ongoing work

Project Funding Plan (Proposed)

As of December, 2012

Target Project Cost	\$307.5M
Multnomah County VRF (Collected)	\$ 22,708,000
Multnomah County VRF (Bonded)	\$ 141,684,000
City of Portland	\$ 74,750,000
Oregon Jobs and Transportation Act	\$ 30,000,000
2012 Oregon Legislature	\$ 5,000,000
Federal funds carryover from planning	\$ 15,658,000
Federal TIGER III Act	\$ 17,700,000
TOTAL	\$ 307,500,000

Stakeholder Issues

Thru Jan/Feb 2014

- Daytime traffic complaints from commuters
- Noise complaints due to construction vehicles
- Bridge closure causes traffic delays

Project Expenditures (post-ROD)

Thru January 31, 2014

	\$ Spent	Status
ROW	\$ 23,072,449	On Budget
Design/pre-con.	\$ 29,073,303	On Budget
Construction	\$ 117,154,689	On Budget
Grand Total	\$ 169,300,441	

Social Equity

Thru December 31, 2013

A&E Team (Design) Sep '12	Goal	To Date	Status
DBE	7%, (\$1.0m)	9.0%	Complete
MWESB	13%, (\$1.8m)	14.9%	Complete
CM/GC Contractor	Goal	To Date	Status
DBE (Committed)	4%	1.6%	Below Target
DMWESB (Contracted)	20%	14.0%	Below Target
Workforce Women	14%	15%	Above Target
Diversity Minority	20%	29%	Above Target

Note: DMWESB goals/targets published Sept 2011 from CM/GC in subcontracting plan.

News Headlines

[Sellwood Bridge reopens early \(KOIN\)](#)
[Sellwood Bridge reopens to traffic early \(KATU\)](#)
[Sellwood Bridge will close to all traffic \(BikePortland\)](#)
[Bridging the knowledge gap about Sellwood Bridge construction \(Oregonian, Jan. 2014\)](#)

Followers - Weekly email updates = 620
 - Weekly email updates = 957

Sustainability

- Review of Greenroads Certification Plan is complete
- Review of Greenroads Detailed Assessment is complete
- Project sustainability tracking and documentation continues
- Reuse and recycling of onsite materials continues
- Plan refinement and preparations for park, stream, and habitat

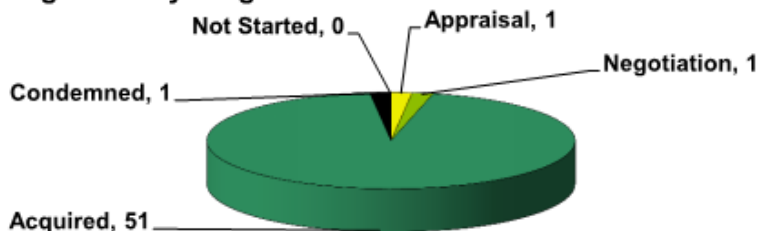
Design Accomplishments

- Miles Place design (95%) submitted for review
- Macadam Bay driveway design (95%) submitted for review

Construction Accomplishments

- New signal is operational at west interchange
- Traffic coordination completed to support construction of the new interchange
- Soldier piles installed at west end of bridge
- Continued drilling/pouring for new bridge foundations
- Continued work on multiuse path/regional trail
- Continued work on west retaining walls (some nearing completion)

Right of Way Progress



ROW actions to be completed = 54
Current as of February 19, 2014

Upcoming Site Work

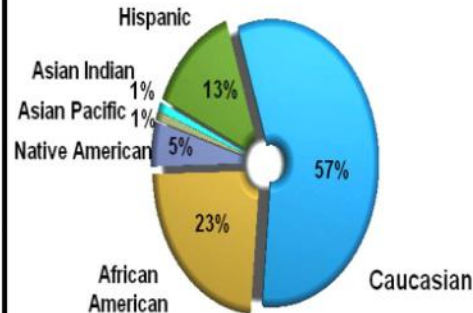
- Continued drilling and concrete pouring for new bridge foundations
- Completion of work for west retaining walls
- Continued work on multiuse path
- Continued work on west interchange and regional trail
- Construction of interchange ramps

January 2014 Sellwood Small Business Dashboard

Summary

- These charts are based on contracts and dollars awarded.
- The contractor's goal is to award 20% of total contract dollars to DMWESB firms. Currently, the DMWESB Contracted is 14% and the DMWESB Paid is 6.5%.

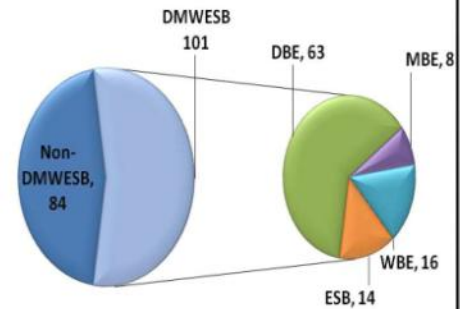
DMWESB Ethnicity



Based on number of contracts awarded.

Total Contracts Awarded

Total Contracts - 185

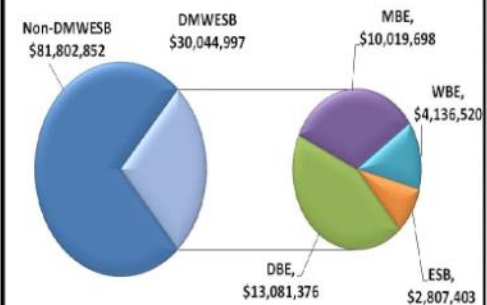


DMWESB Participation and Paid to Date



Total Dollars Awarded

\$111,847,849
Total Project Contract Amount
\$212,635,309



Glossary: DBE—Disadvantaged Business, MBE—Minority-Owned Business, WBE—Women-Owned Business, ESB—Emerging Small Business

Summary

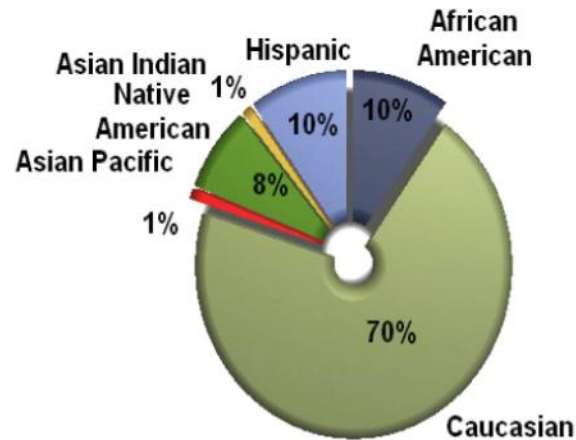
- Progress on meeting aspirational goals for minority and female participation. SSJV is exceeding the target for minorities and meeting the target for women.

**Total Workforce Hours
(Apprentice & Journey Level)**



Based on number of hours worked.
(Minority includes men and women.)

**Total Workforce Ethnicity
(Male and Female)**

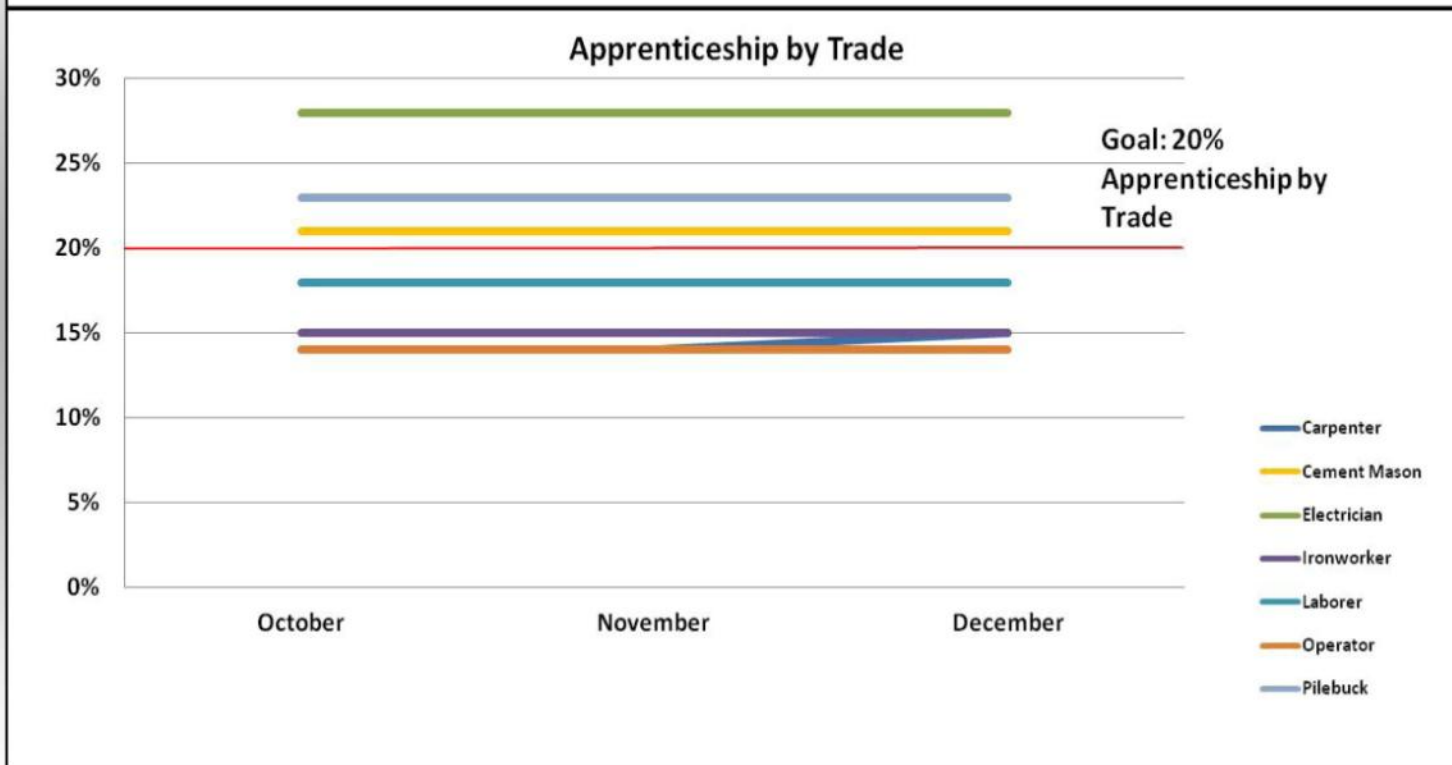


Based on number of hours worked.

January 2014 Sellwood Workforce Dashboard

Summary

- The following chart represents total apprenticeship hours by trade for all subcontractors working on the project. Any contractor over \$100K is required to achieve 20% apprenticeship hours by trade per the County's Workforce Training and Hiring Program.





About the Project ▾

Public Involvement ▾

Project Library ▾

History ▾

Contact us

Diversity Program

Multnomah County is committed to providing equal opportunity and encourages Minority, Women and Emerging Small Businesses (MWESBs) and Disadvantaged Business Enterprises (DBEs) to compete for contracting opportunities.

Multnomah County strives to ensure all members of our community are afforded opportunities. The following programs and initiatives are intended to help individuals and companies gain work on our projects, be awarded contracts to provide goods and services to meet our program needs, and to receive the training and technical assistance to grow their businesses or expand their skill sets.

The county's efforts to ensure equal opportunities are provided to the community include the following areas related to contracting and procurement opportunities:

- Good Faith Effort
- Workforce Training and Hiring Program
- Technical Assistance Program
- Outreach
- Sponsorship

Visit Multnomah County's [Diversity Programs and Initiatives](#) page for more details about these programs.

Building diversity into the bridge

A key decision that impacted the Sellwood project's diversity program was the choice of contracting method for construction. Due to the complexity of the project and the critical need to contain costs, the county selected a Construction Manager/General Contractor (CM/GC) approach to:

- Influence pre-construction design and planning efforts
- Maximize value-engineering cost savings, select the lowest risk options, and expedite the schedule
- Integrate sustainability into the project
- Maximize opportunities to involve MWESB businesses throughout the project

In addition to being only the second CM/GC bridge project ever conducted in Oregon, this was the county's largest construction project to date, in dollar terms.

Building upon the accomplishments of the East County Courthouse project in Gresham, Multnomah County Purchasing developed and implemented a robust



"There are two kinds of organizations. Those who simply state they are going to increase the participation of minority-owned, women-owned and small businesses in their mission statement. And those who actively do the outreach."

About the Project

- [Why is it needed?](#)
- [Project Phases](#)
- [The New Bridge](#)
- [The Detour Bridge](#)
- [Sustainability](#)
- [Diversity Program](#)
- [Field Work and Construction Updates](#)
- [Contractor Information](#)

Related documents

- [Slayden Sundt Joint Venture Diversity Plan](#) (pdf, 280kb)
- [County Central Purchasing Annual Report 2012](#) (pdf, 40mb)
- [Profile: Vijay Deodhar](#) (pdf, 32kb)

Diversity Dashboards



- [Current dashboard: Jan 2014](#) (pdf, 570kb)
- [Previous dashboards](#)

Construction Update

Progress (thru 1/31/14)

[illegible]



01/21/14
Courtesy of ODOT

Work

- Landslide stabilization (complete)
- Condominium rebuild (Phase 1 complete)
- Stephen's Creek culvert
- Regional Trail
- West OR 43 retaining walls
- West approach
- Riverview Cemetery (Phase 1 complete)
- Work bridges
- Removal of old bridge piers
- In-river foundations
- Main bridge piers
- East approach
- Steel fabrication



CONTECH
CONCRETE
SYSTEMS



10/24/13
Multnomah County









11/26/13
Multnomah County



SPEED
LIMIT
25

DesignSpace
MODULAR BUILDINGS
866-889-7777





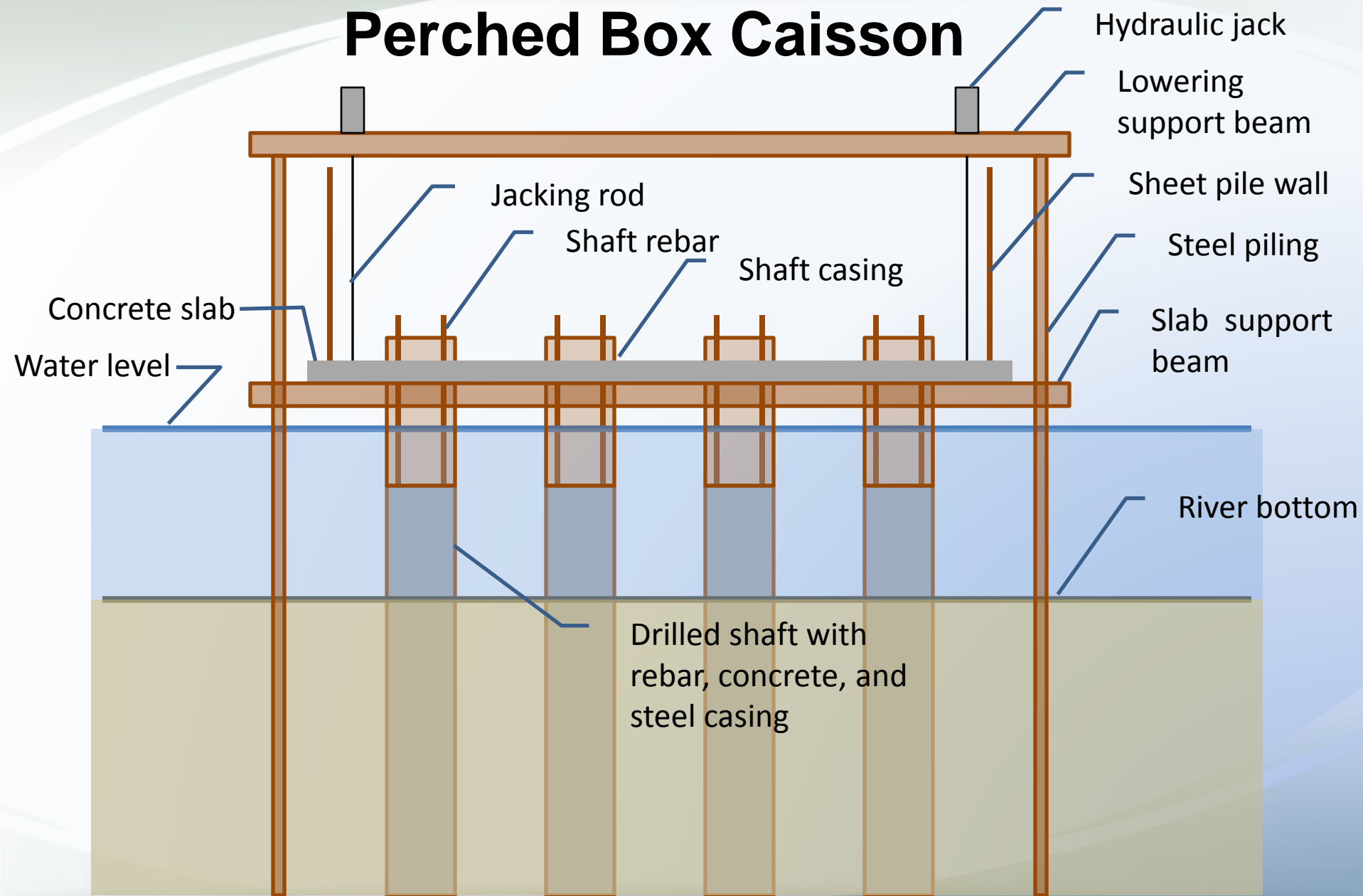








Perched Box Caisson





10/24/13
Multnomah County







Sheet pile wall

Steel piling

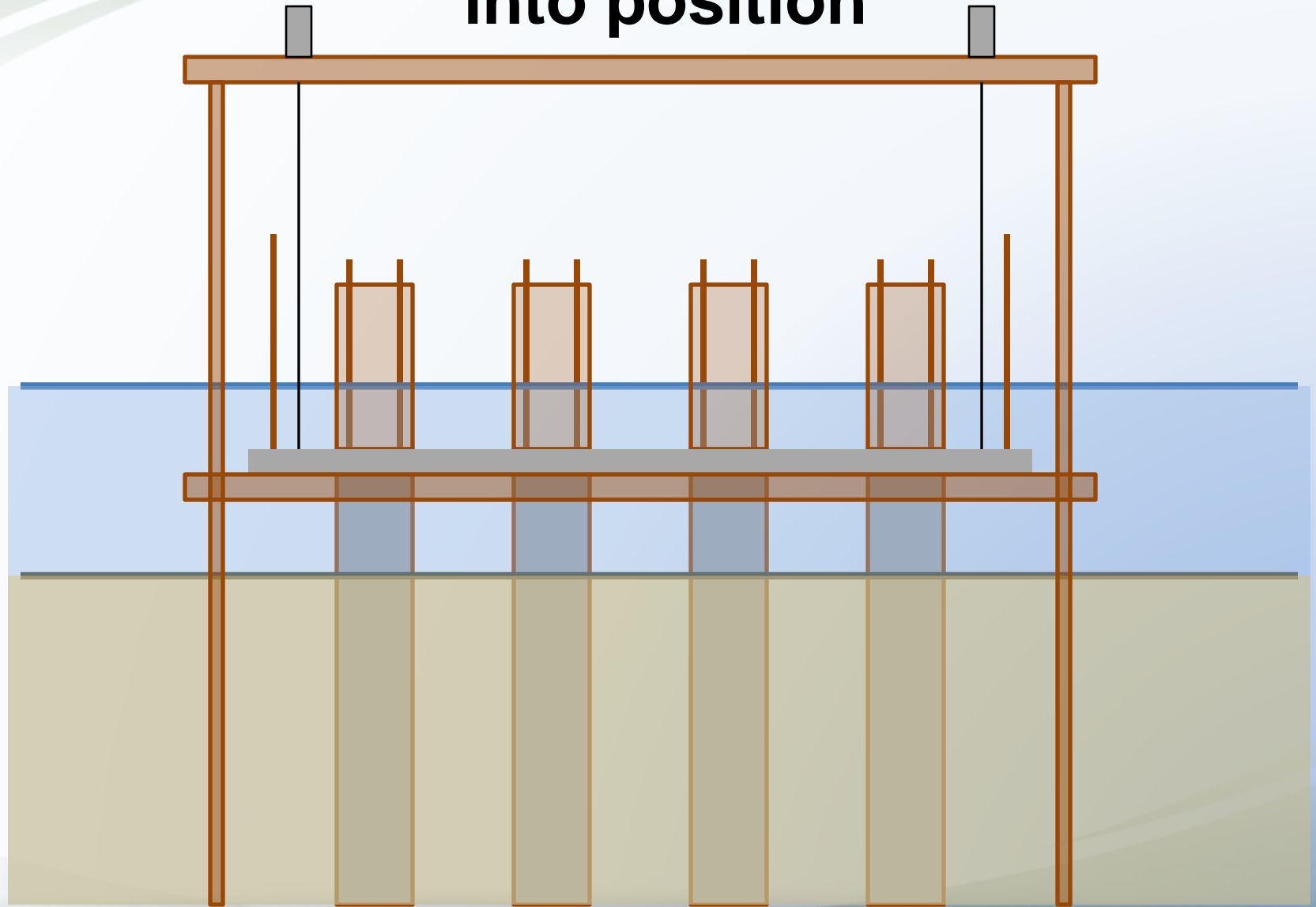
Drilled shaft with
rebar, concrete, and
steel casing

Concrete slab



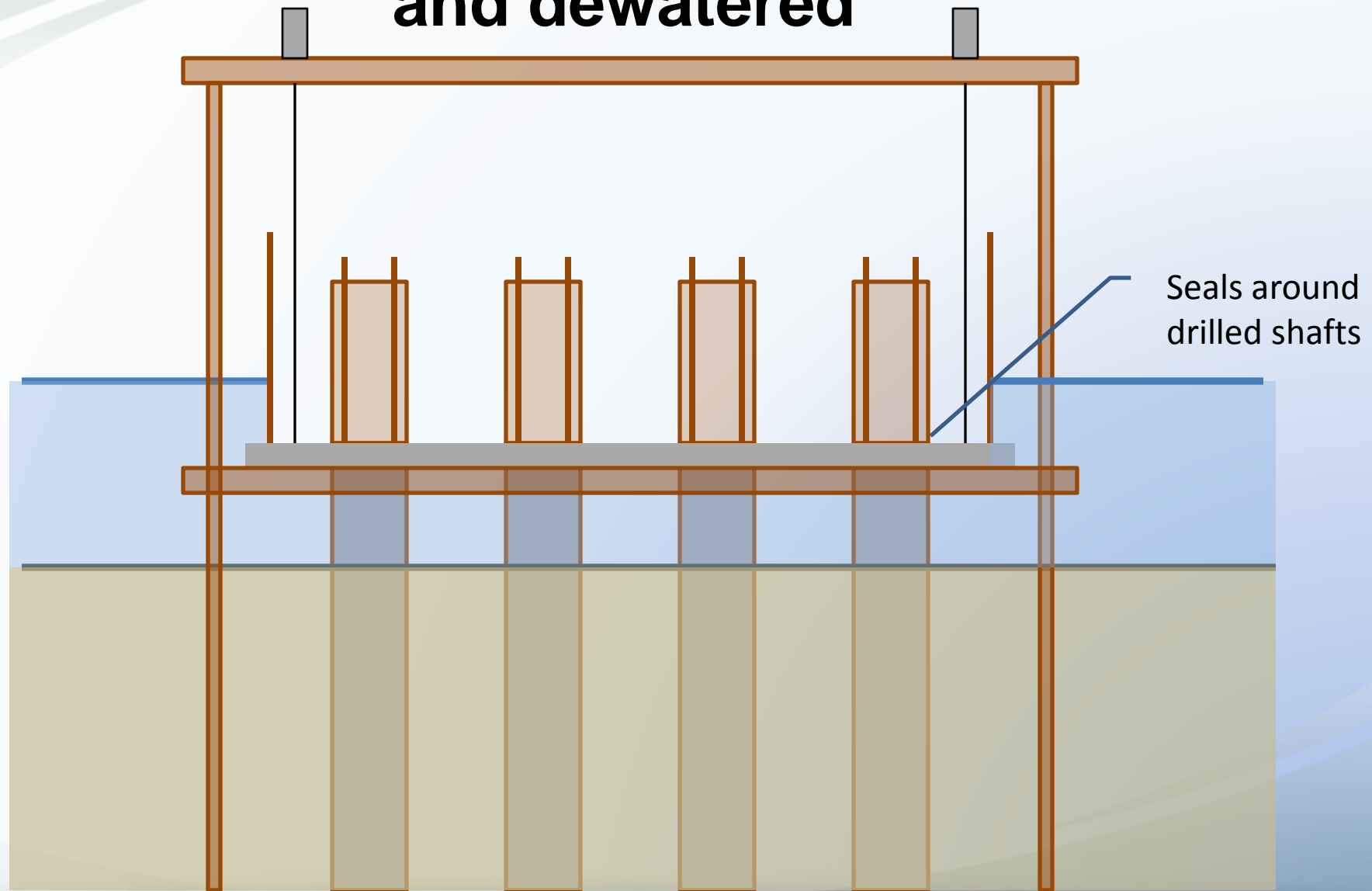


Perched Box Caisson lowered into position

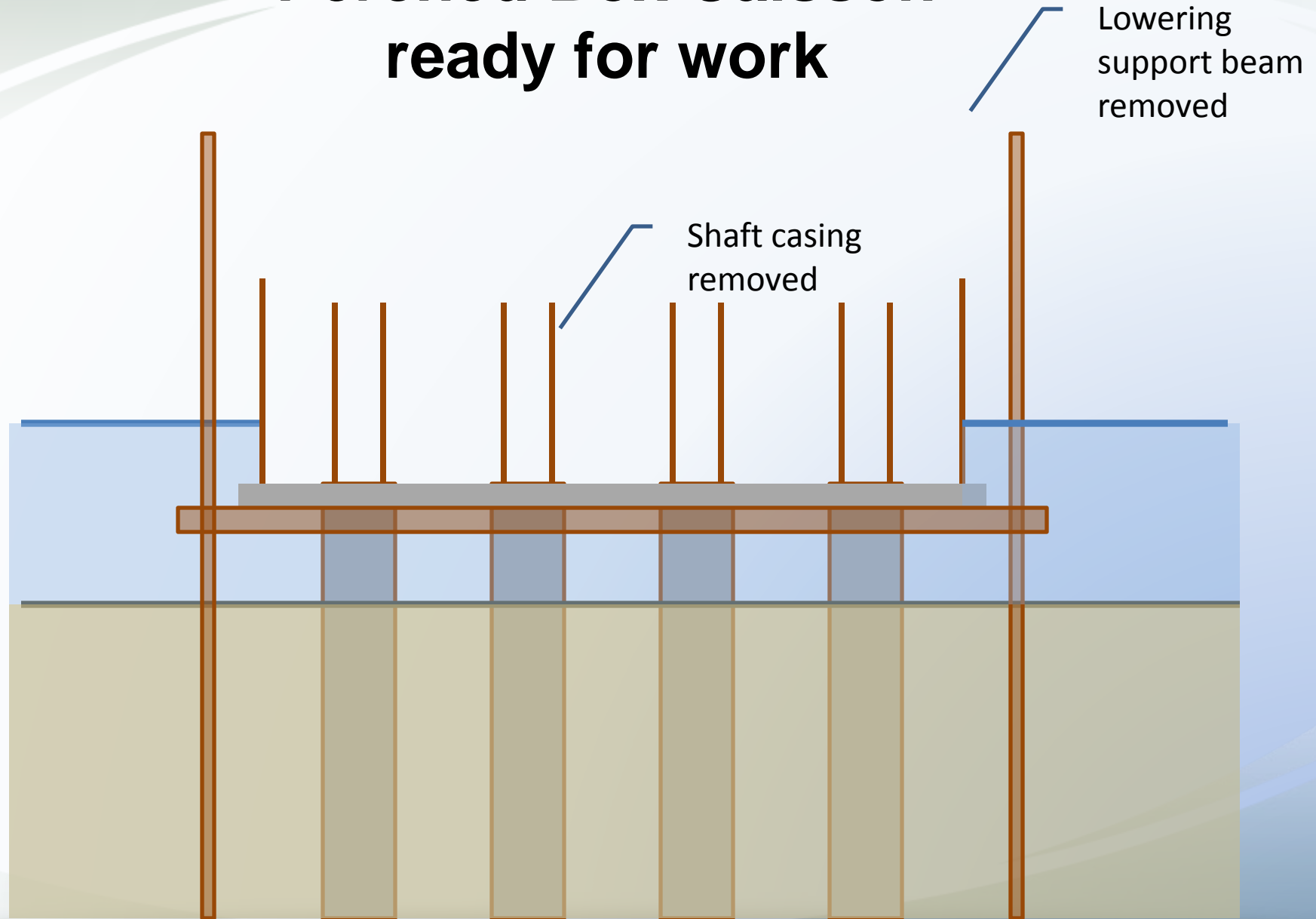




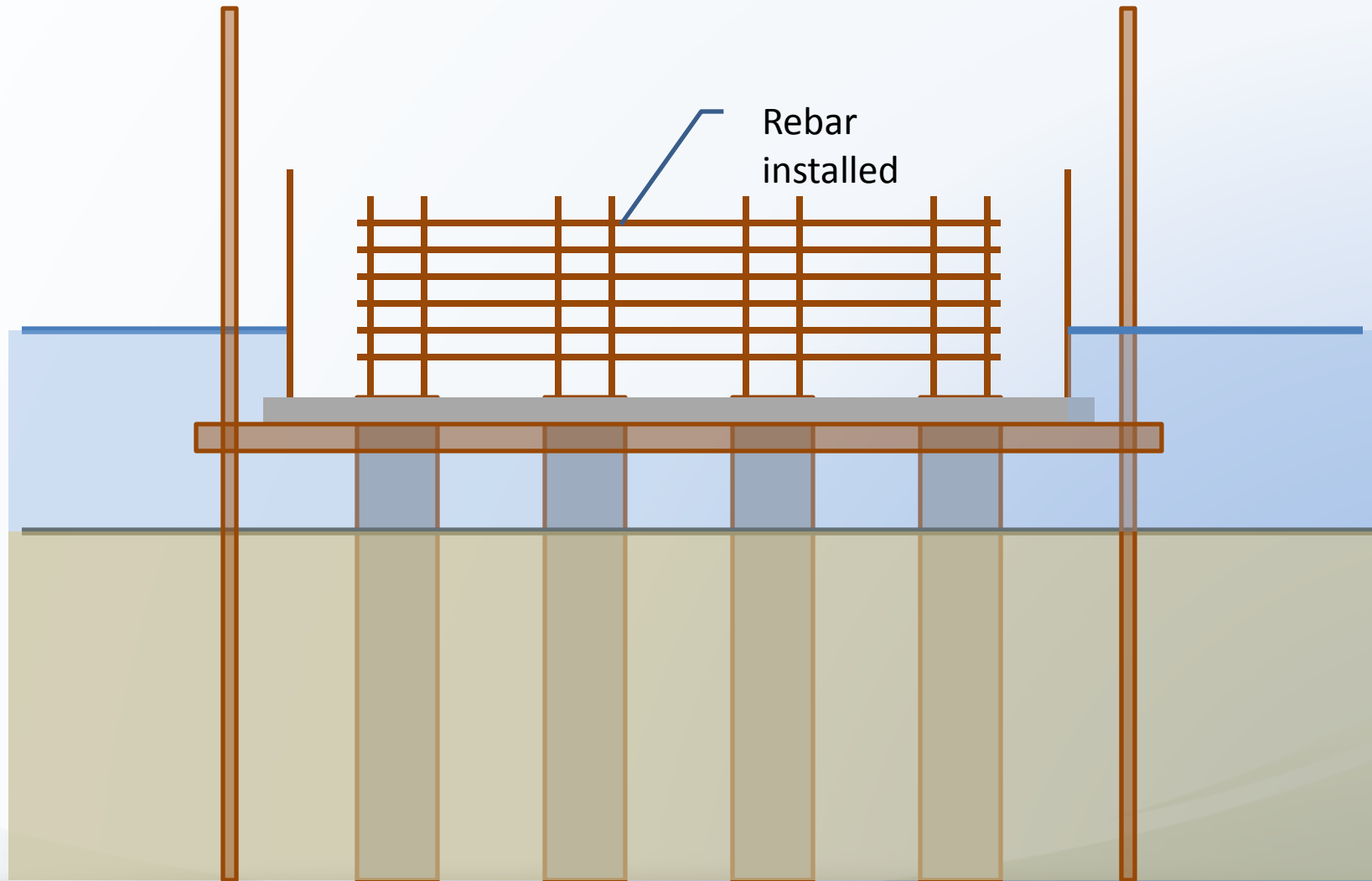
Perched Box Caisson sealed and dewatered



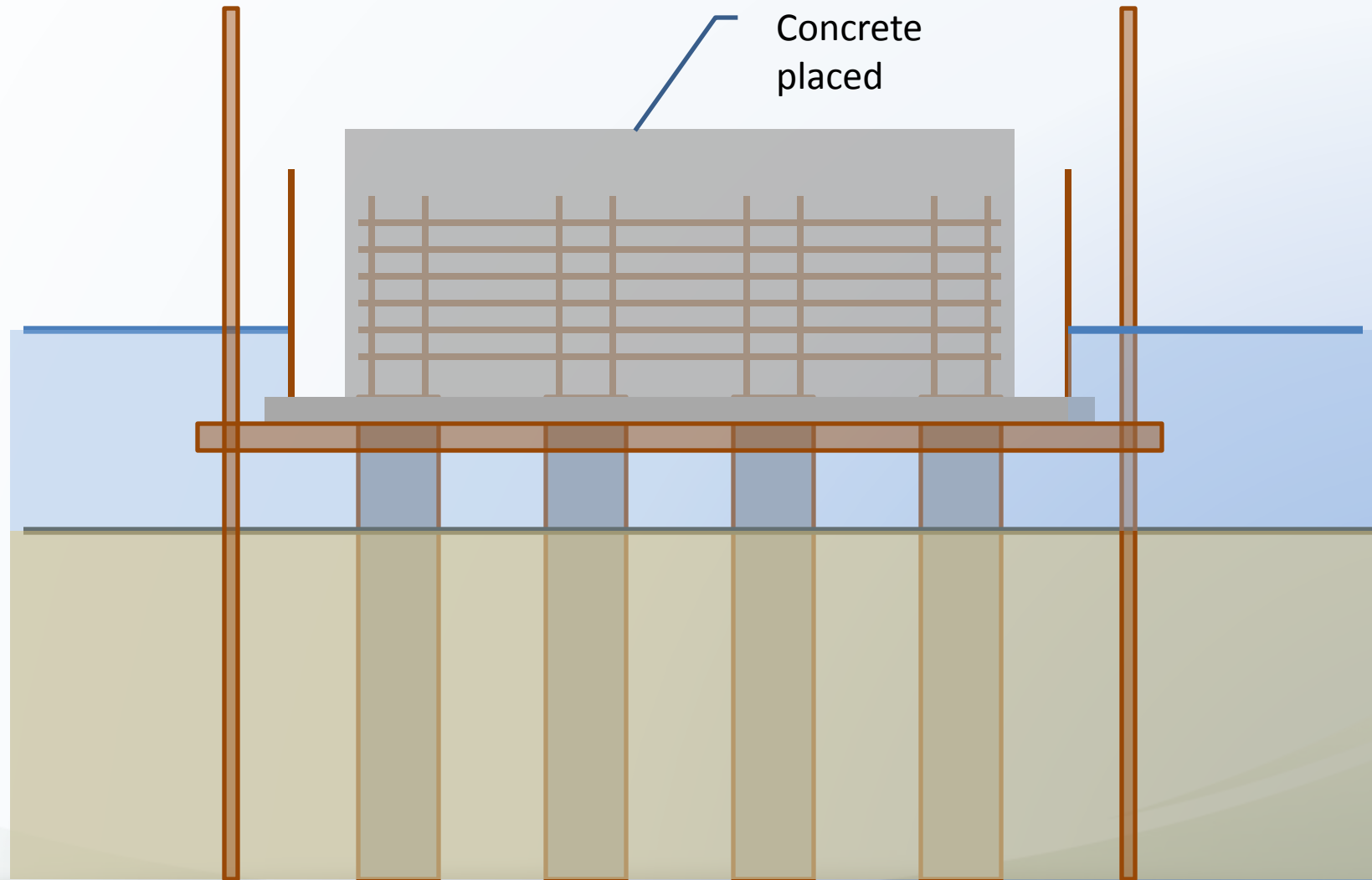
Perched Box Caisson ready for work



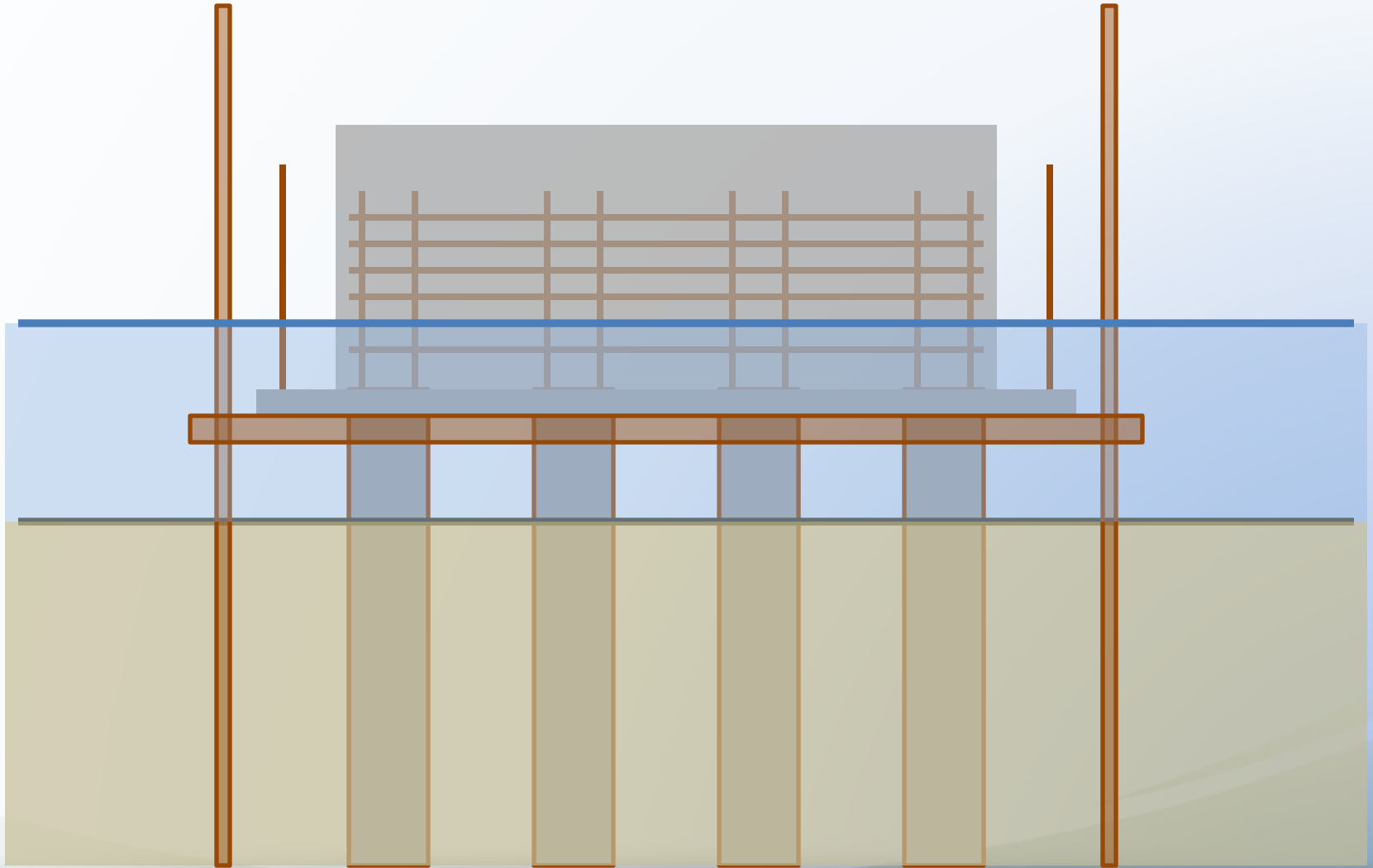
River Pier Construction inside Perched Box Caisson



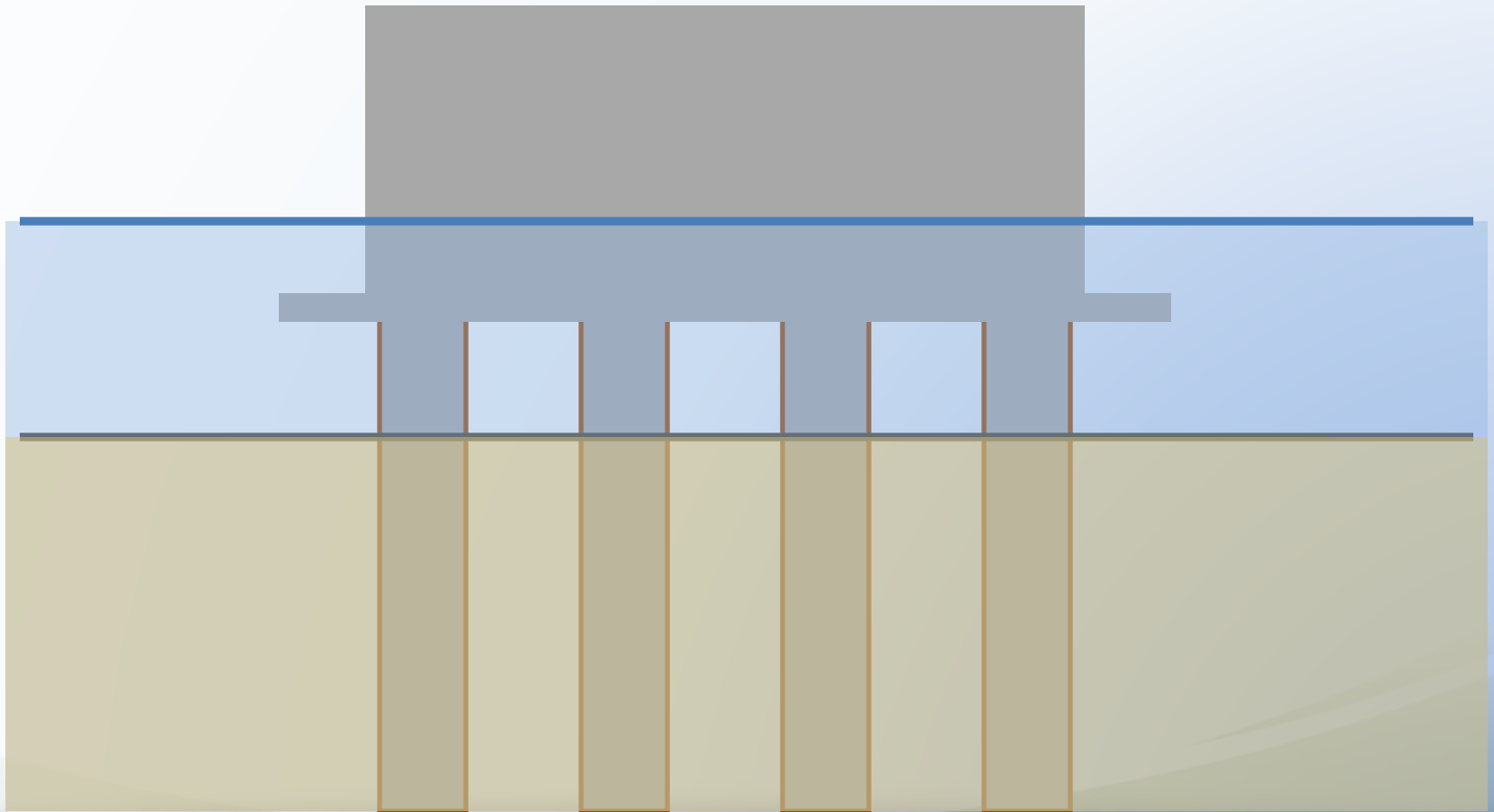
River Pier Construction inside Perched Box Caisson



Perched Box Caisson allowed to flood



Perched Box Caisson removed River Pier complete





6

7











02/20/14
Multnomah County



2

P3007

P3007

P3007

P3007

3314-03 15-1035 9-103 P3007

23418-03 15

P2001 NTN-13-0267 MT-2T052
P2001 NTN-13-0267 MT-2T052
P2001 NTN-13-0267 MT-2T052
P2001 NTN-13-0267 MT-2T052



Questions

www.SellwoodBridge.org