

A stylized graphic on the left side of the slide. It features two green mountain peaks of different heights. Below the mountains is a green wavy line representing a shoreline or a body of water. At the bottom is a blue wavy line representing water. The entire graphic is composed of solid-colored shapes with no internal details.

Proposed Multnomah County ADVSD Area Plan 2017-2020

Erin Grahek, Community Service
Program Manager & Rebecca Miller,
Planning & Development Specialist
Aging, Disability, and Veterans
Services Division
September 29, 2016

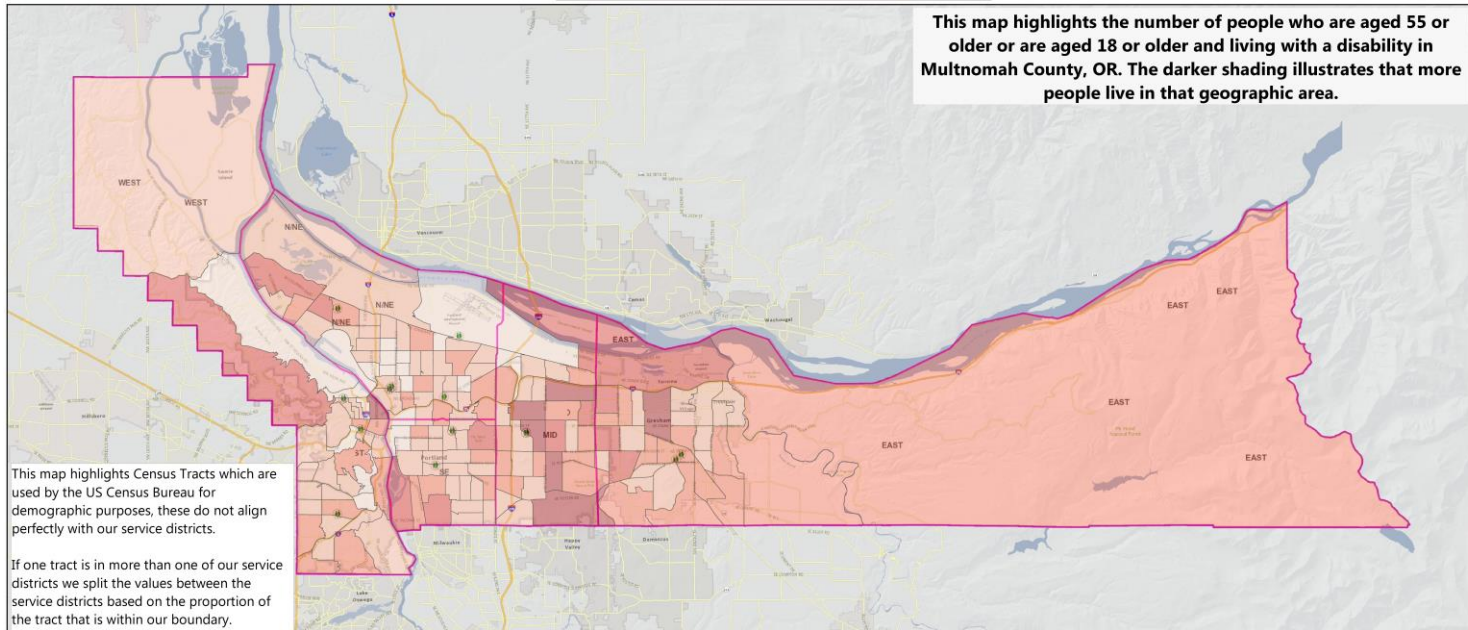
2014 Population Profile

| Group | Population | Population % |
|-------------------------------------|------------|--------------|
| Total | 140, 097 | 100% |
| Below 185% FPL | 40,240 | 7.6% |
| Minority | 23, 676 | 16.9% |
| Person with Disability | 48,445 | 35.2% |
| Limited English Prof. | 11,199 | 8.6% |
| American Indian or Alaska Native | 700 | 0.5% |
| Black/African-American | 6,585 | 4.7% |
| Asian/Pacific Islander | 9,106 | 6.5% |
| Other Race | 1,261 | 0.9% |
| Two or More Races | 2,382 | 1.7% |
| Hispanic | 4,903 | 3.5% |



Aging & Diversity Profile by Region

Figures based on 2014 American Community Survey 5-yr estimates by 2010 Census Tracts. Figures are estimates, boundaries are approximate.



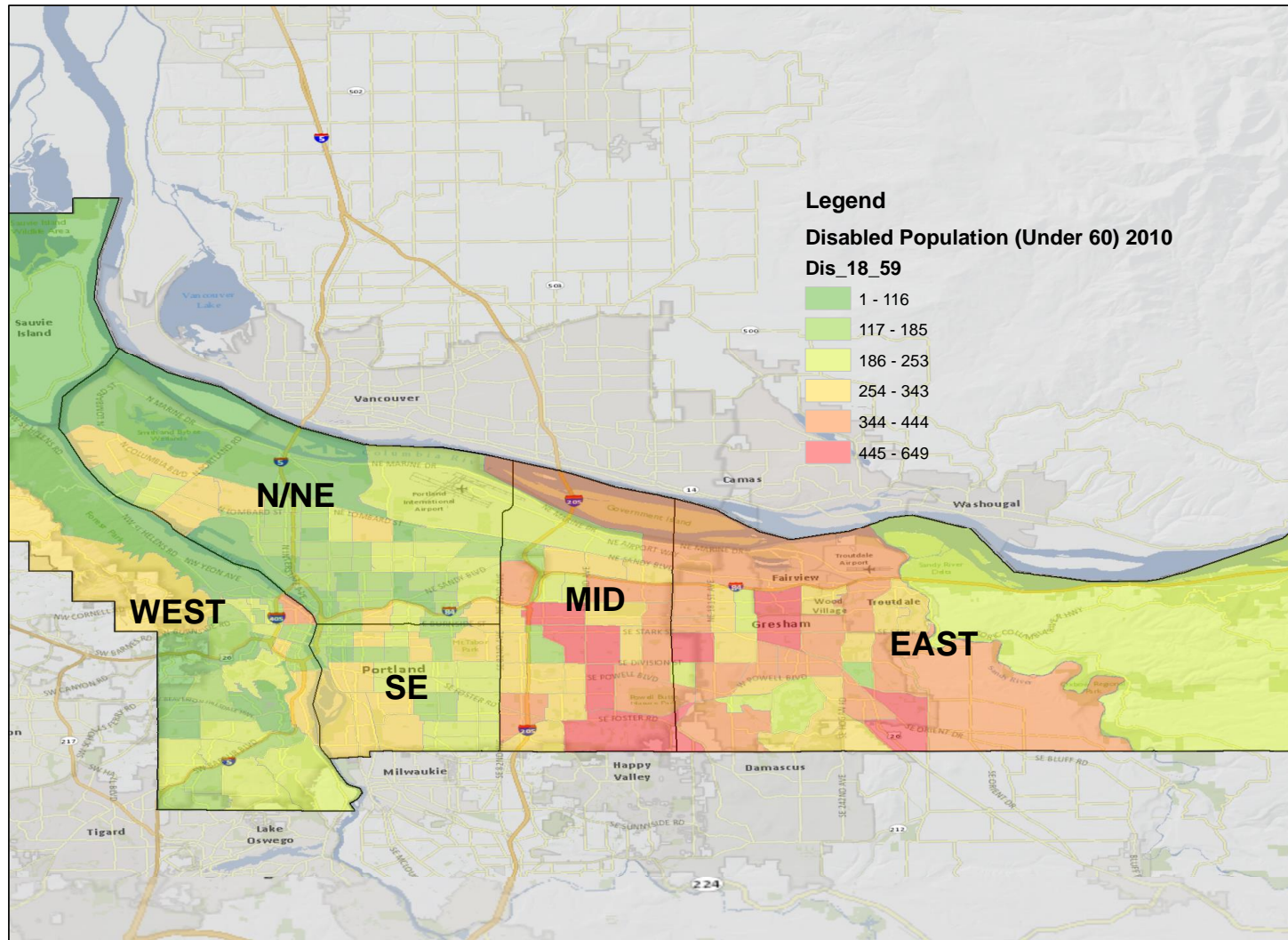
Measures selected that result in map shading:

| | Branch | | | | | Grand Total | % of Population |
|----------------------|--------|--------|--------|-------|--------|---------------|-----------------|
| | EAST | MID | N/NE | SE | WEST | | |
| Population AGE 55-59 | 9,743 | 9,542 | 10,866 | 8,387 | 10,044 | 48,582 | 6.41% |
| Population AGE 60-64 | 8,225 | 8,274 | 11,067 | 7,037 | 9,495 | 44,099 | 5.82% |
| Population AGE 65-74 | 9,940 | 9,559 | 10,269 | 7,611 | 10,834 | 48,213 | 6.37% |
| Population AGE 75-84 | 5,633 | 5,958 | 4,520 | 3,307 | 4,153 | 23,572 | 3.11% |
| Population AGE 85+ | 2,266 | 4,061 | 2,261 | 2,053 | 2,439 | 13,080 | 1.73% |
| DISABILITY (18-64) | 12,985 | 13,474 | 12,586 | 9,188 | 7,523 | 55,756 | 7.36% |
| DISABILITY (65-74) | 3,052 | 2,947 | 2,882 | 1,962 | 1,686 | 12,529 | 1.65% |
| DISABILITY (75+) | 4,183 | 5,659 | 3,538 | 2,930 | 3,133 | 19,443 | 2.57% |

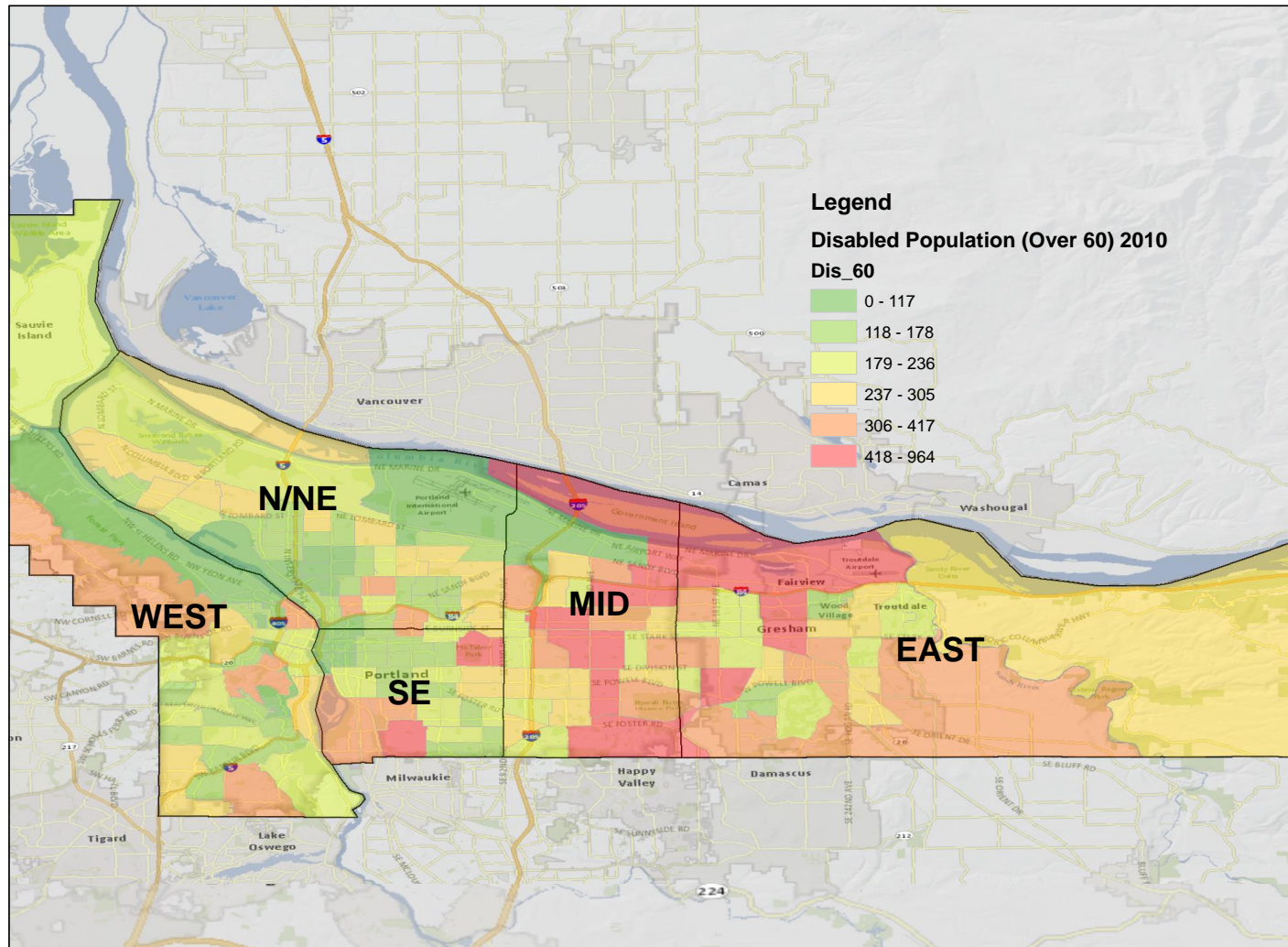
More information about Multnomah County:

| | Branch | | | | | Grand Total | % of Population |
|--|---------|---------|---------|---------|---------|----------------|-----------------|
| | EAST | MID | N/NE | SE | WEST | | |
| 60+ Population | 26,064 | 27,852 | 28,118 | 20,008 | 26,922 | 128,964 | 17.03% |
| Population | 153,863 | 159,114 | 184,868 | 126,962 | 132,564 | 757,371 | 100.00% |
| Median Age | 30 | 28 | 30 | 26 | 32 | 29 | 100.00% |
| Disabled Adults | 16,038 | 16,421 | 15,468 | 11,150 | 9,208 | 68,285 | 9.02% |
| Poverty (Below 185% FPL) | 57,545 | 70,332 | 59,585 | 37,569 | 30,777 | 255,808 | 33.78% |
| HH with Person 60+ Receiving SNAP | 769 | 952 | 1,573 | 1,043 | 1,019 | 5,356 | 0.71% |
| 55+ Population | 35,807 | 37,394 | 38,984 | 28,396 | 36,965 | 177,546 | 23.44% |
| 55+ Poverty (Below 185% FPL) | 9,008 | 12,298 | 11,760 | 7,636 | 7,425 | 48,127 | 6.35% |
| 55+ Hispanic | 1,455 | 1,270 | 1,993 | 914 | 970 | 6,602 | 0.87% |
| 55+ African-American / Black | 1,180 | 1,453 | 4,974 | 261 | 431 | 8,299 | 1.10% |
| 55+ American Indian / Alaskan Native | 302 | 326 | 280 | 132 | 263 | 1,304 | 0.17% |
| 55+ Asian | 2,697 | 7,481 | 2,798 | 3,904 | 1,789 | 18,669 | 2.46% |
| 55+ Native Hawaiian / Pacific Islander | 189 | 103 | 383 | 19 | 37 | 731 | 0.10% |
| 55+ Other Race | 436 | 595 | 722 | 415 | 521 | 2,689 | 0.36% |
| 55+ Two or More Races | 352 | 362 | 608 | 99 | 259 | 1,680 | 0.22% |

People with Disabilities (18-59)

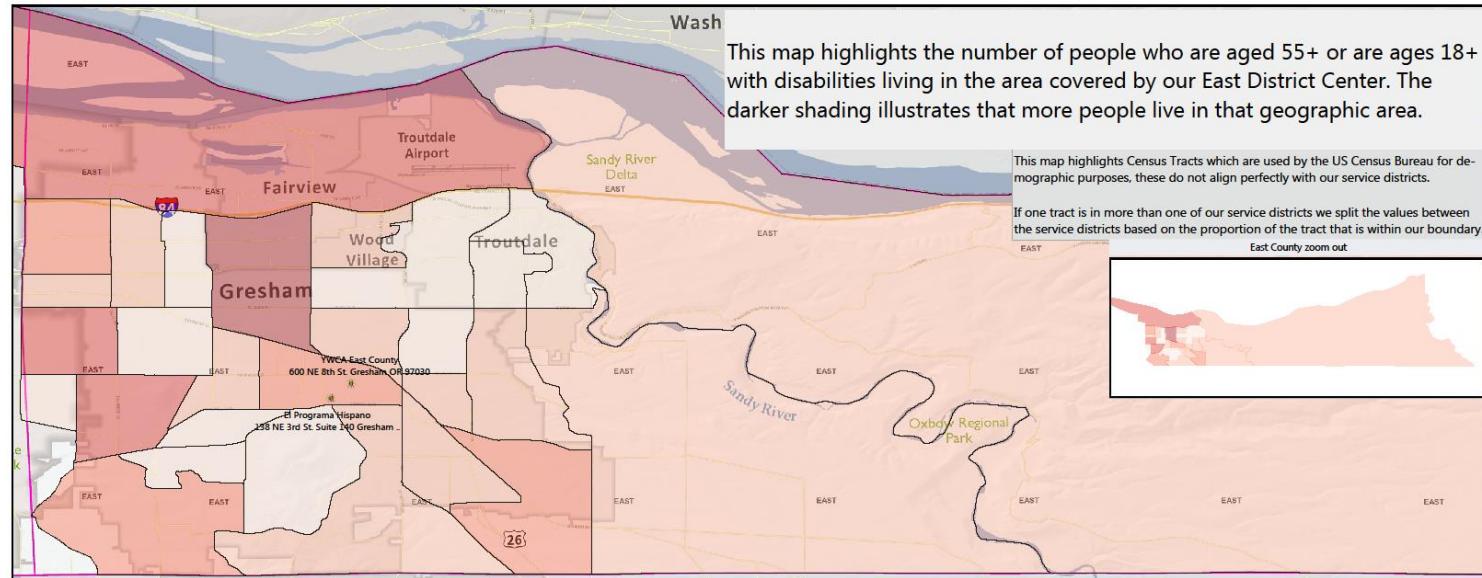
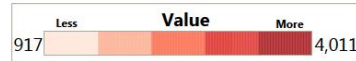


People with Disabilities(60+)



East District Aging & Diversity Profile

Figures based on 2014 American Community Survey 5-yr estimates by 2010 Census Tracts. Figures are estimates, boundaries are approximate.



More information on East County:

| | | |
|----------------------|--------|-------|
| Population AGE 55-59 | 9,743 | 6.33% |
| Population AGE 60-64 | 8,225 | 5.35% |
| Population AGE 65-74 | 9,940 | 6.46% |
| Population AGE 75-84 | 5,633 | 3.66% |
| Population AGE 85+ | 2,266 | 1.47% |
| DISABILITY (18-64) | 12,985 | 8.44% |
| DISABILITY (65-74) | 3,052 | 1.98% |
| DISABILITY (75+) | 4,183 | 2.72% |

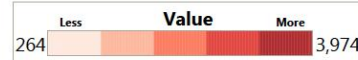
Selected measures that result in map shading:

| | | |
|--|---------|---------|
| 60+ Population | 26,064 | 16.94% |
| Population | 153,863 | 100.00% |
| Median Age | 30 | 100.00% |
| Disabled Adults | 16,038 | 10.42% |
| Poverty (Below 185% FPL) | 57,545 | 37.40% |
| HH with Person 60+ Receiving SNAP | 769 | 0.50% |
| 55+ Population | 35,807 | 23.27% |
| 55+ Poverty (Below 185% FPL) | 9,008 | 5.85% |
| 55+ Hispanic | 25,762 | 16.74% |
| 55+ African-American / Black | 1,894 | 1.23% |
| 55+ American Indian / Alaskan Native | 546 | 0.35% |
| 55+ Asian | 2,697 | 1.75% |
| 55+ Native Hawaiian / Pacific Islander | 189 | 0.12% |
| 55+ Other Race | 650 | 0.42% |
| 55+ Two or More Races | 608 | 0.39% |



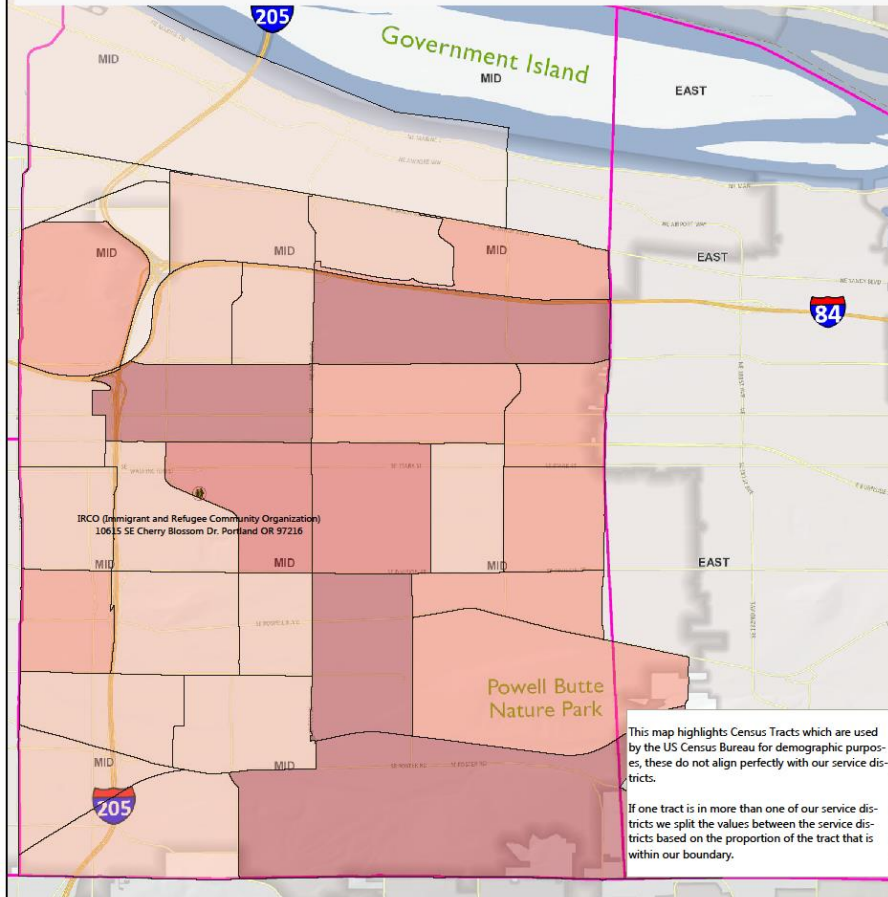
Mid-County District Aging & Diversity Profile

Figures based on 2014 American Community Survey 5-yr estimates by 2010 Census Tracts. Figures are estimates, boundaries are approximate.



Daniel McKay - Sr. Data Analyst - Ph: 503-988-9887

This map highlights the number of people who are aged 55+ or are ages 18+ and disabled living in the area covered by our Mid County branch. The darker shading illustrates that more people live in that geographic area.



Measures selected that result in map shading:

| | | |
|----------------------|--------|-------|
| Population AGE 55-59 | 9,542 | 6.00% |
| Population AGE 60-64 | 8,274 | 5.20% |
| Population AGE 65-74 | 9,559 | 6.01% |
| Population AGE 75-84 | 5,958 | 3.74% |
| Population AGE 85+ | 4,061 | 2.55% |
| DISABILITY (18-64) | 13,474 | 8.47% |
| DISABILITY (65-74) | 2,947 | 1.85% |
| DISABILITY (75+) | 5,659 | 3.56% |

More information on Mid-County:

| | | |
|--|---------|---------|
| 60+ Population | 27,852 | 17.50% |
| Population | 159,114 | 100.00% |
| Median Age | 28 | 100.00% |
| Disabled Adults | 16,421 | 10.32% |
| Poverty (Below 185% FPL) | 70,332 | 44.20% |
| HH with Person 60+ Receiving SNAP | 952 | 0.60% |
| 55+ Population | 37,394 | 23.50% |
| 55+ Poverty (Below 185% FPL) | 12,298 | 7.73% |
| 55+ Hispanic | 25,157 | 15.81% |
| 55+ African American / Black | 2,376 | 1.49% |
| 55+ American Indian / Alaskan Native | 593 | 0.37% |
| 55+ Asian | 7,481 | 4.70% |
| 55+ Native Hawaiian / Pacific Islander | 103 | 0.06% |
| 55+ Other Race | 761 | 0.48% |
| 55+ Two or More Races | 717 | 0.45% |



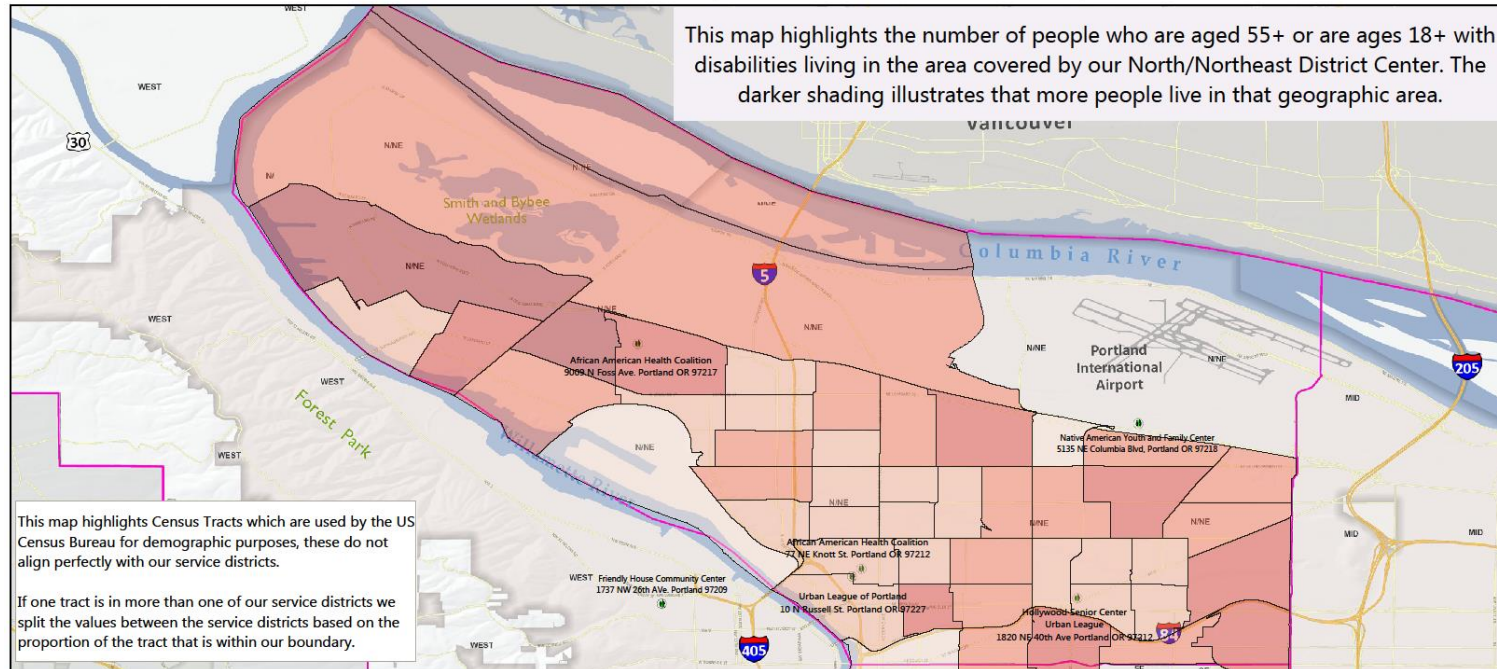
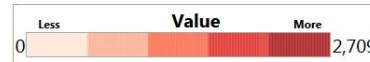
North/Northeast District Aging & Diversity Profile



Aging, Disability and Veterans Services Division

Daniel McKay - Sr. Data Analyst - Ph: 503-988-9887

Figures based on 2014 American Community Survey 5-yr estimates by 2010 Census Tracts. Figures are estimates, boundaries are approximate.



More information on North/Northeast County:

| | | |
|--|---------|---------|
| 60+ Population | 28,118 | 15.21% |
| Population | 184,868 | 100.00% |
| Median Age | 30 | 100.00% |
| Disabled Adults | 15,468 | 8.37% |
| Poverty (Below 185% FPL) | 59,585 | 32.23% |
| HH with Person 60+ Receiving SNAP | 1,573 | 0.85% |
| 55+ Population | 38,984 | 21.09% |
| 55+ Poverty (Below 185% FPL) | 11,760 | 6.36% |
| 55+ Hispanic | 25,014 | 13.53% |
| 55+ African-American / Black | 8,687 | 4.70% |
| 55+ American Indian / Alaskan Native | 397 | 0.21% |
| 55+ Asian | 2,798 | 1.51% |
| 55+ Native Hawaiian / Pacific Islander | 383 | 0.21% |
| 55+ Other Race | 1,188 | 0.64% |
| 55+ Two or More Races | 1,126 | 0.61% |

Selected measures that result in map shading:

| | | |
|----------------------|--------|-------|
| Population AGE 55-59 | 10,866 | 5.88% |
| Population AGE 60-64 | 11,067 | 5.99% |
| Population AGE 65-74 | 10,269 | 5.55% |
| Population AGE 75-84 | 4,520 | 2.45% |
| Population AGE 85+ | 2,261 | 1.22% |
| DISABILITY (18-64) | 12,586 | 6.81% |
| DISABILITY (65-74) | 2,882 | 1.56% |
| DISABILITY (75+) | 3,538 | 1.91% |



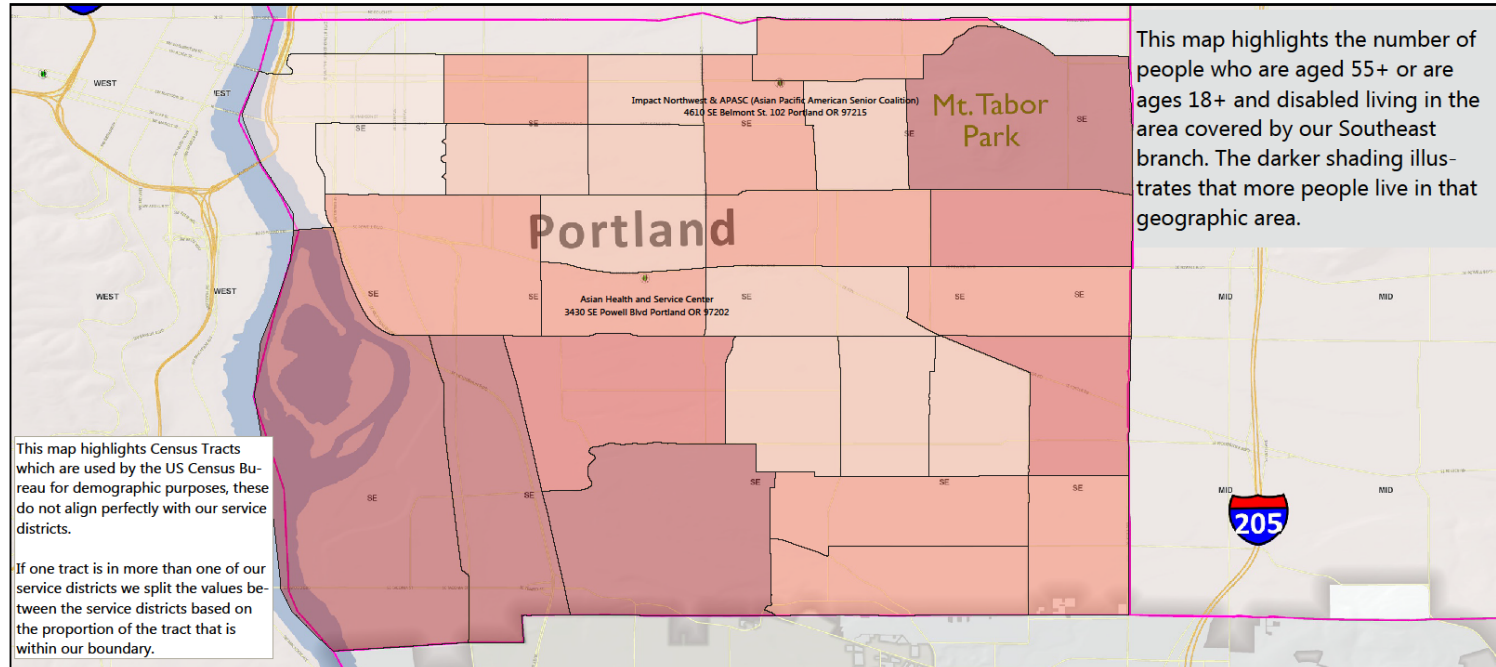
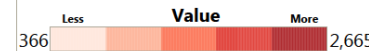
Southeast District Aging & Diversity Profile



Aging, Disability and Veterans Services Division

Daniel McKay - Sr. Data Analyst - Ph: 503-988-9887

Figures based on 2014 American Community Survey 5-yr estimates by 2010 Census Tracts. Figures are estimates, boundaries are approximate.



Measures selected that result in map shading:

| | | |
|----------------------|-------|-------|
| Population AGE 55-59 | 8,387 | 6.61% |
| Population AGE 60-64 | 7,037 | 5.54% |
| Population AGE 65-74 | 7,611 | 5.99% |
| Population AGE 75-84 | 3,307 | 2.60% |
| Population AGE 85+ | 2,053 | 1.62% |
| DISABILITY (18-64) | 9,188 | 7.24% |
| DISABILITY (65-74) | 1,962 | 1.55% |
| DISABILITY (75+) | 2,930 | 2.31% |

More information on Southeast County:

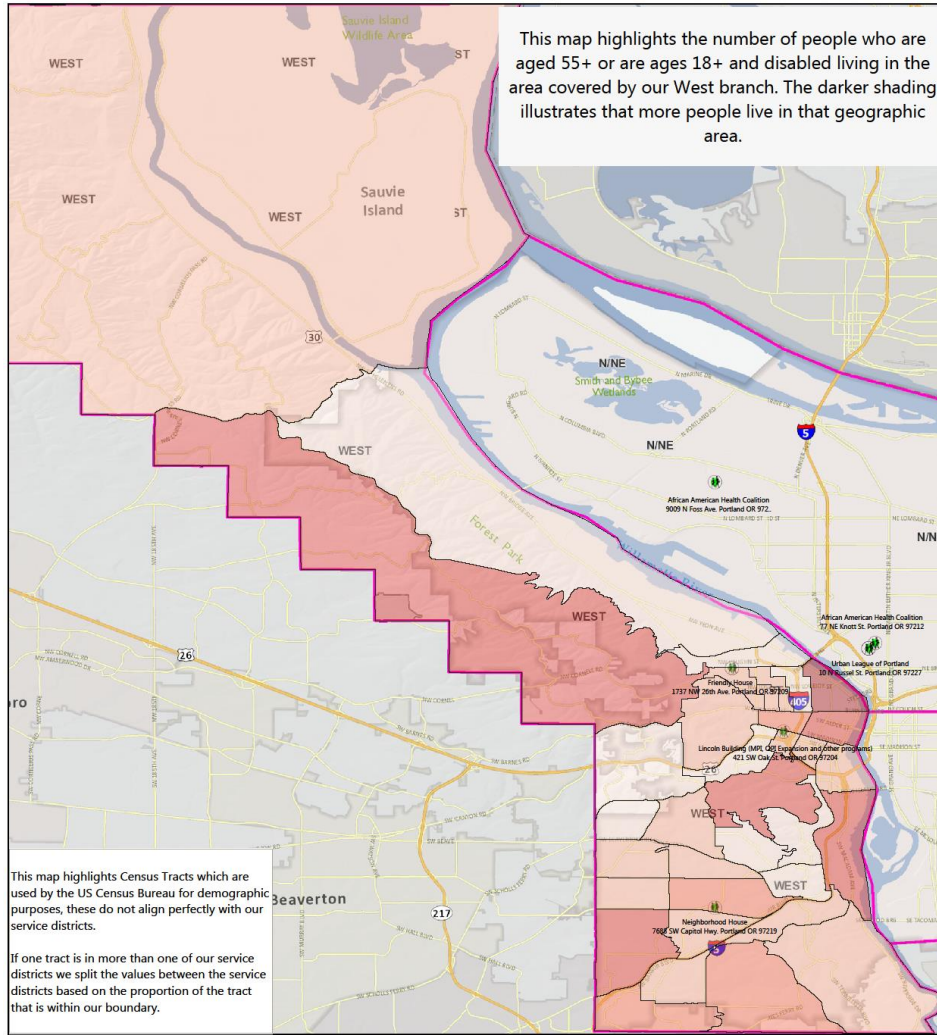
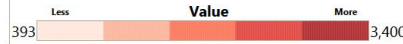
| | | |
|--|---------|---------|
| 60+ Population | 20,008 | 15.76% |
| Population | 126,962 | 100.00% |
| Median Age | 26 | 100.00% |
| Disabled Adults | 11,150 | 8.78% |
| Poverty (Below 185% FPL) | 37,569 | 29.59% |
| HH with Person 60+ Receiving SNAP | 1,043 | 0.82% |
| 55+ Population | 28,396 | 22.37% |
| 55+ Poverty (Below 185% FPL) | 7,636 | 6.01% |
| 55+ Hispanic | 19,330 | 15.23% |
| 55+ African-American / Black | 410 | 0.32% |
| 55+ American Indian / Alaskan Native | 203 | 0.16% |
| 55+ Asian | 3,904 | 3.07% |
| 55+ Native Hawaiian / Pacific Islander | 19 | 0.02% |
| 55+ Other Race | 490 | 0.39% |
| 55+ Two or More Races | 295 | 0.23% |



West District Aging & Diversity Profile



Figures based on 2014 American Community Survey 5-yr estimates by 2010 Census Tracts. Figures are estimates, boundaries are approximate.



Daniel McKay - Sr. Data Analyst - Ph: 503-988-9887

Measures selected that result in map shading:

More information on West County:

| | | | | | |
|----------------------|--------|-------|--|---------|---------|
| Population AGE 55-59 | 10,044 | 7.58% | 60+ Population | 26,922 | 20.31% |
| Population AGE 60-64 | 9,495 | 7.16% | Population | 132,564 | 100.00% |
| Population AGE 65-74 | 10,834 | 8.17% | Median Age | 32 | 100.00% |
| Population AGE 75-84 | 4,153 | 3.13% | Disabled Adults | 9,208 | 6.95% |
| Population AGE 85+ | 2,439 | 1.84% | Poverty (Below 185% FPL) | 30,777 | 23.22% |
| DISABILITY (18-64) | 7,523 | 5.67% | HH with Person 60+ Receiving SNAP | 1,019 | 0.77% |
| DISABILITY (65-74) | 1,686 | 1.27% | 55+ Population | 36,965 | 27.89% |
| DISABILITY (75+) | 3,133 | 2.36% | 55+ Poverty (Below 185% FPL) | 7,425 | 5.60% |
| | | | 55+ Hispanic | 26,868 | 20.27% |
| | | | 55+ African-American / Black | 722 | 0.54% |
| | | | 55+ American Indian / Alaskan Native | 449 | 0.34% |
| | | | 55+ Asian | 1,789 | 1.35% |
| | | | 55+ Native Hawaiian / Pacific Islander | 37 | 0.03% |
| | | | 55+ Other Race | 691 | 0.52% |
| | | | 55+ Two or More Races | 632 | 0.48% |



Planning Process

2013-2016: Data collection and research

Jan-Mar: Worked with community stakeholders and advisory council members to develop community engagement plan.

Apr-Jun: Conducted 18 community listening sessions.

Jul-Aug: Created Area Plan goals and objectives using community feedback as guide.



Planning Process (cont.)

Aug: Two public hearings on draft Area Plan and integrate public comment.

Sep: Approval by Senior and Disability Services Advisory Councils and Board of County Commissioners.

Looking ahead: Circle back to community to validate and share ADVSD analysis of community feedback.

Oct 3: 2017-2020 Area Plan Due.



Issue Areas

- Outreach, Information & Referral
- Nutrition Services
- Promoting Health
- OAA Case Management, Options Counseling
- Emergency services/gap programs
- Caregiver Support & Education
- Safety & Abuse Prevention
- Older Adult Behavioral Health
- Transportation Coordination & Resources



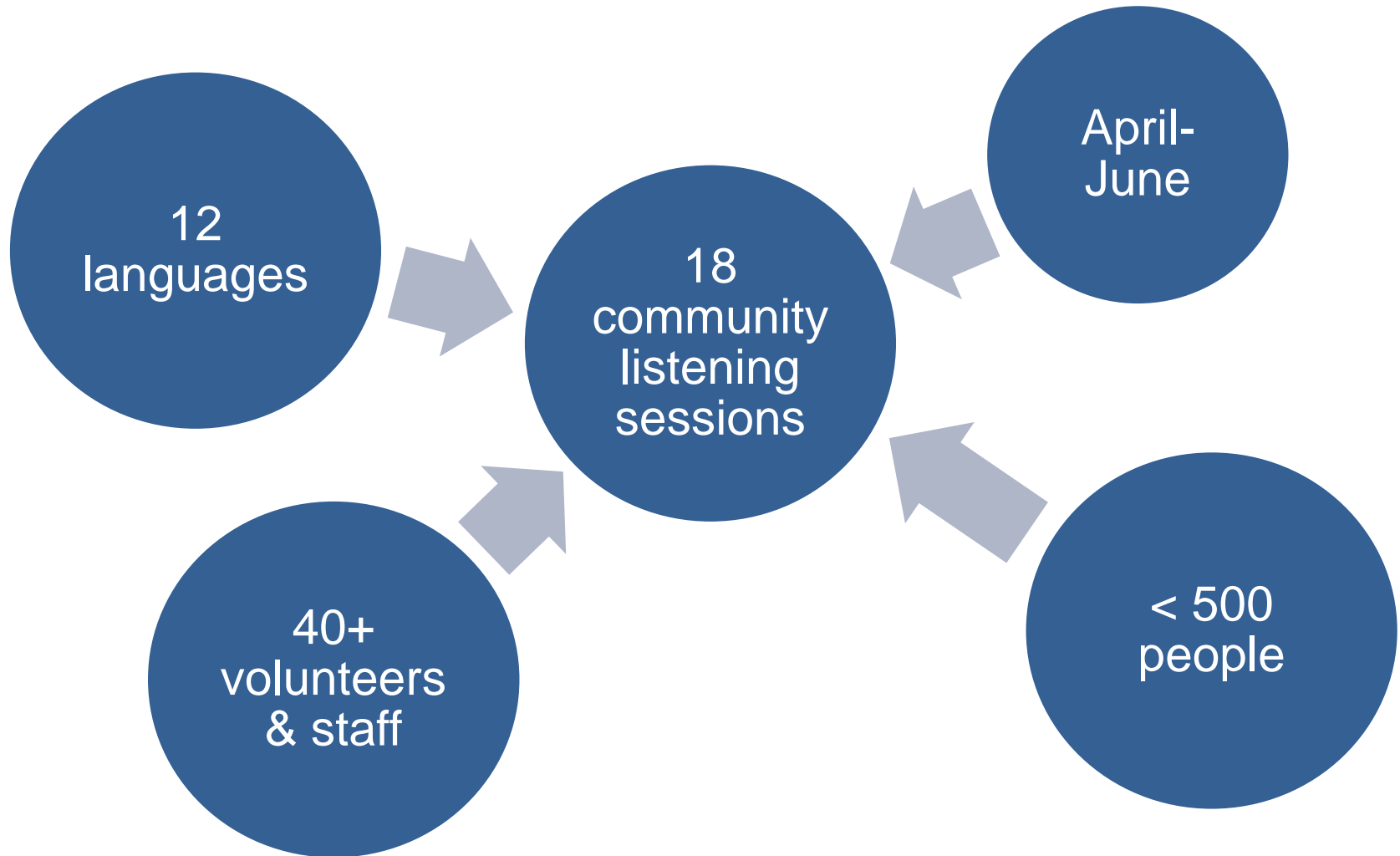
Community Listening Session Format

Three questions asked:

- What's important to you about this focus area?
- What's working well for you in this focus area?
- What do you need more of in this focus area?



Community Listening Sessions



About Listening Session Participants

Racial, Ethnic, and/or
Cultural Minorities

Limited English Proficiency

89%

11%

68%

32%

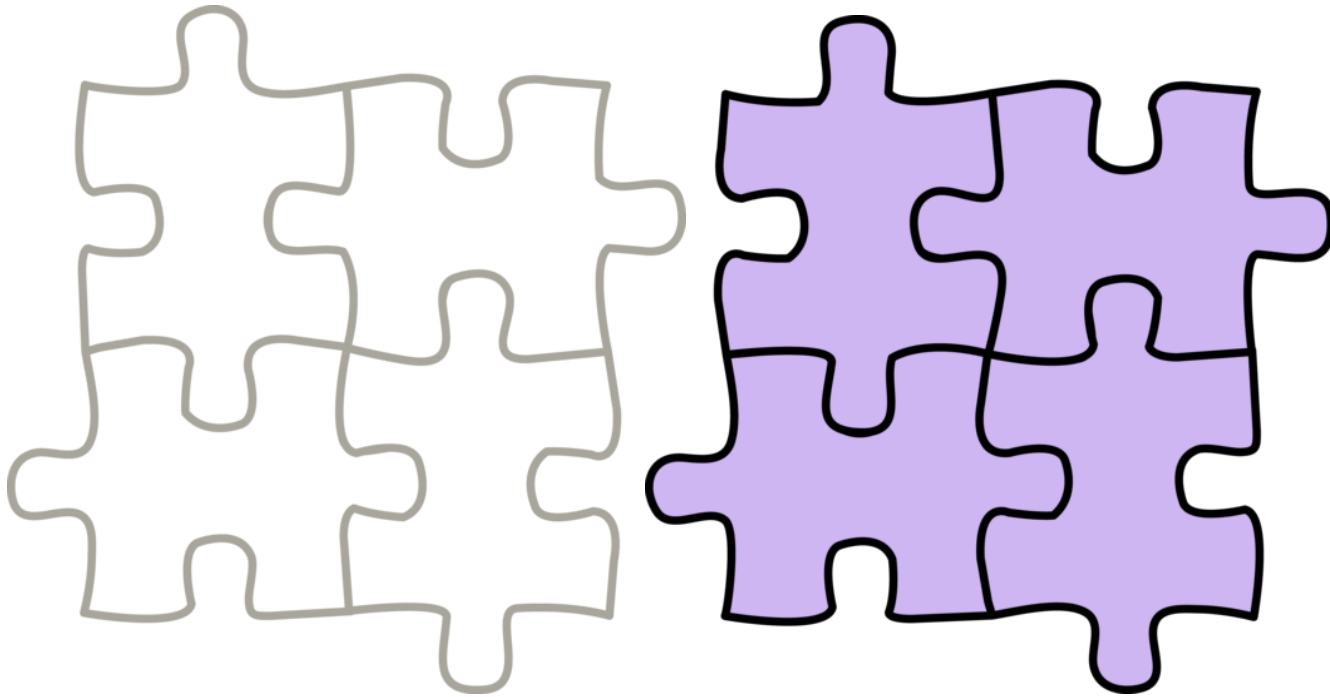
Not Racial, Ethnic
and/or Cultural

English
Speaking

Percentage of Responses



Themes and Lessons from Community



Information & Assistance Services and Aging & Disability Resource Connection (ADRC)

- Decrease isolation and barriers to access experienced by physically, emotionally, culturally, or linguistically isolated older adults.
- ADRC is recognized by the community as a valuable resource for older adults and people with disabilities.



Nutrition Services Goals

- Older adults will have ready access to healthy food that is affordable and supports a healthy diet.
- Be a leader in equity around food security.



Health Promotion Goals

- Improve county-wide access to and utilization of services by racial, ethnic, and cultural minorities and other underserved groups of elders that addresses the social determinants of health and/or forge links between health systems and community services.
- Involvement in health promotion programs will reduce social isolation by providing older adults and people with disabilities support through social networks and direct linkages to community resources offered by our contracted partners.



Family Caregivers Goals

- Support quality services for family caregivers.
- Promote access to family caregiver services and resources, including respite services, to meet the needs and preferences of family and informal caregivers from diverse cultural backgrounds.



Elders Rights & Legal Assistance Goals

- Ensure that older adults and people with disabilities have access to protection against abuse, financial exploitation, and neglect, with particular attention focused on resources, access and financial stability.
- Ensure adequate and equitable access to legal support, peer support, and advocacy for older adults.



Older Native American Goals

- Increase accessibility to culturally specific services and support the needs identified by Native American elders.
- Enhance services for urban Native American elders by promoting capacity-building in agencies that serve them.



Health System Transformation Goals

- Improve coordination of care, enhance member engagement in care coordination, improve coordination of transitions across settings, and improve cross-system education related to older adults and adults with disabilities.



Older Adult Behavioral Health Goals

- People who need services know where to go and feel comfortable seeking out services.
- Develop a system that provides services and supports to people with multiple needs who do not fit into one system.



Veterans Goals

- Older adults leverage entitlements to benefits through the federal Veterans Administration, as well as state and county resources to meet and maintain their individualized care needs.



Transportation Coordination & Access

- Transportation coordination and resources will be readily available, easy to navigate, and distributed equitably across ADVSD service areas.



Questions?

www.multco.us/ads
areaplan@multco.us

Aging, Disability, & Veterans Services Division

