

# **FAC-1 PROJECT DESIGN AND CONSTRUCTION**

## **PART E - EXHIBITS**

## **EXHIBIT**

# **DRAWINGS & SELECTED ILLUSTRATIONS**



# MULTNOMAH COUNTY HEALTH DEPARTMENT HEADQUARTERS



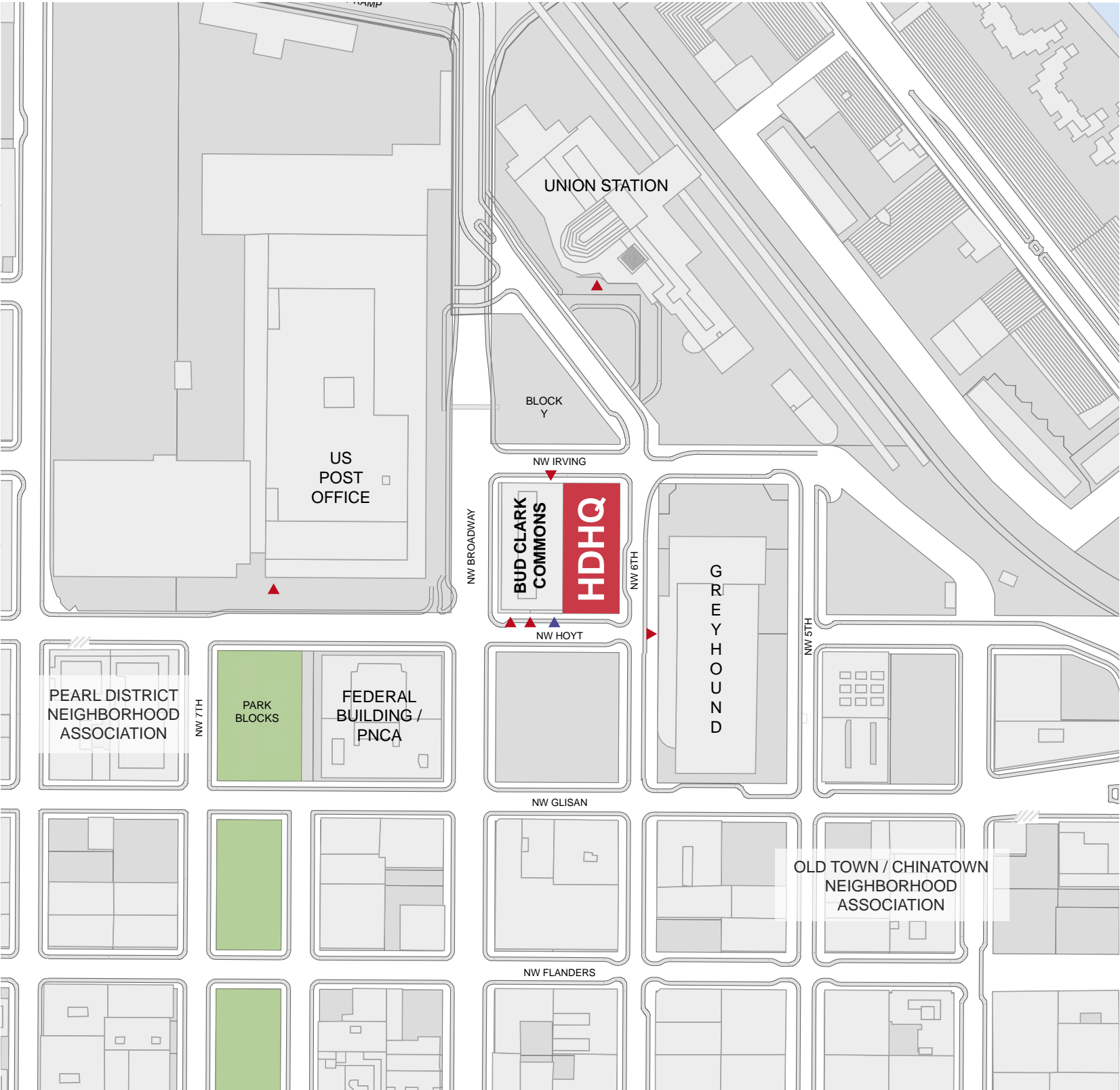
DESIGN REVIEW // LU 16-116592 DA // JUNE 14, 2016 // ZGF ARCHITECTS, LLP

HDHQ FAC-1 PROJECT DESIGN & CONSTRUCTION - EXHIBITS

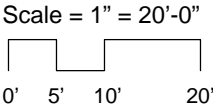
Draft



VICINITY PLAN

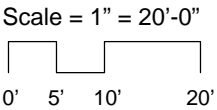


SITE PLAN



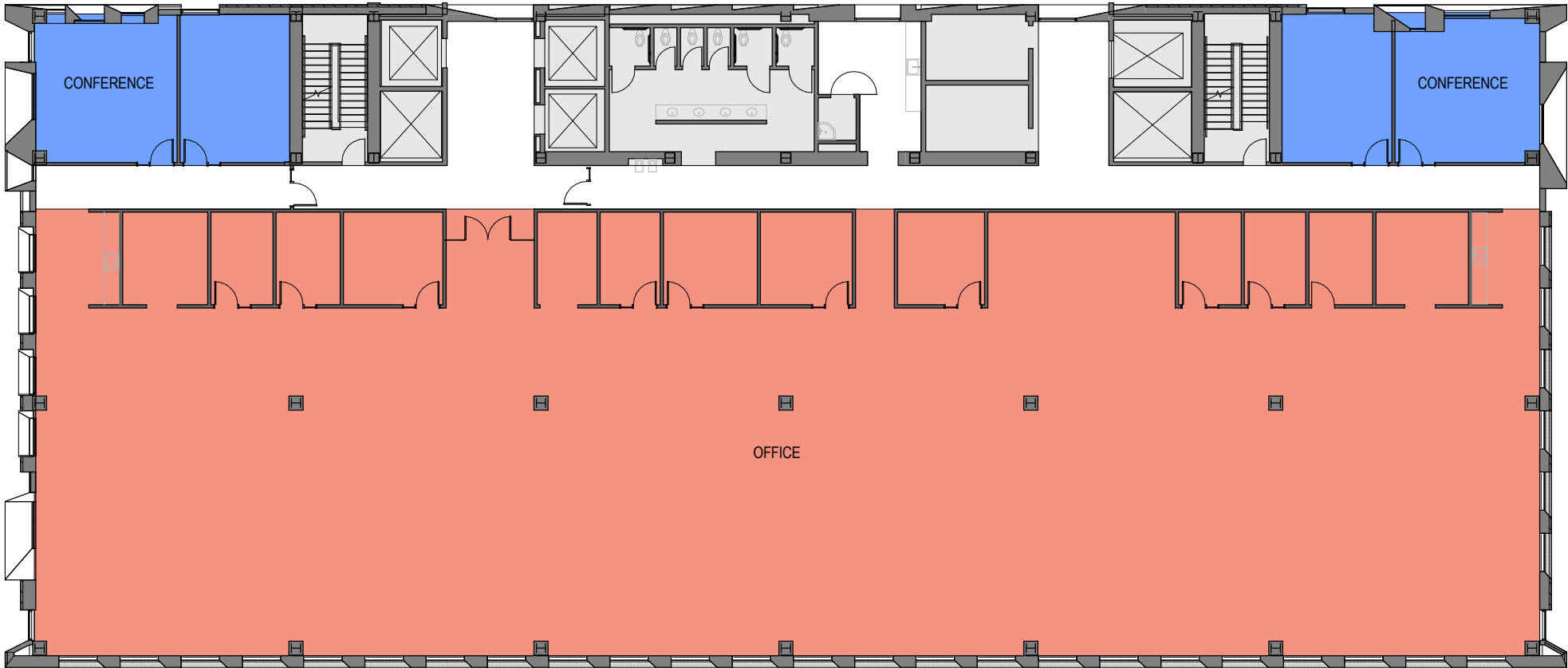
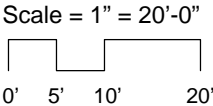
LEVEL 1	
Typ. Floor Area	16,187 SF
Lobby / Circulation	4,110 SF
Potential Lease Area	1,095 SF
Pharmacy	1,459 SF
Work Space	1,937 SF
Bike Room	665 SF
Service	6,458 SF

LEVEL 2-4 PLAN  
Typical Upper Clinical Floor



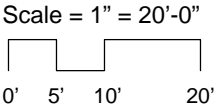
LEVEL 2-4	
Typ. Floor Area	17,320 SF
<div></div> Clinic / Clinic Waiting	6,180 SF
<div></div> Clinic Admin.	6,112 SF
<div></div> Conference	707 SF
<div></div> Service	1,939 SF

LEVEL 5-8 PLAN  
Typical Upper Office Floor



LEVEL 5-8	
Typ. Floor Area	17,320 SF
<div></div> Open Office	11,473 SF
<div></div> Conference	1,332 SF
<div></div> Service	1,939 SF

LEVEL 9 PLAN



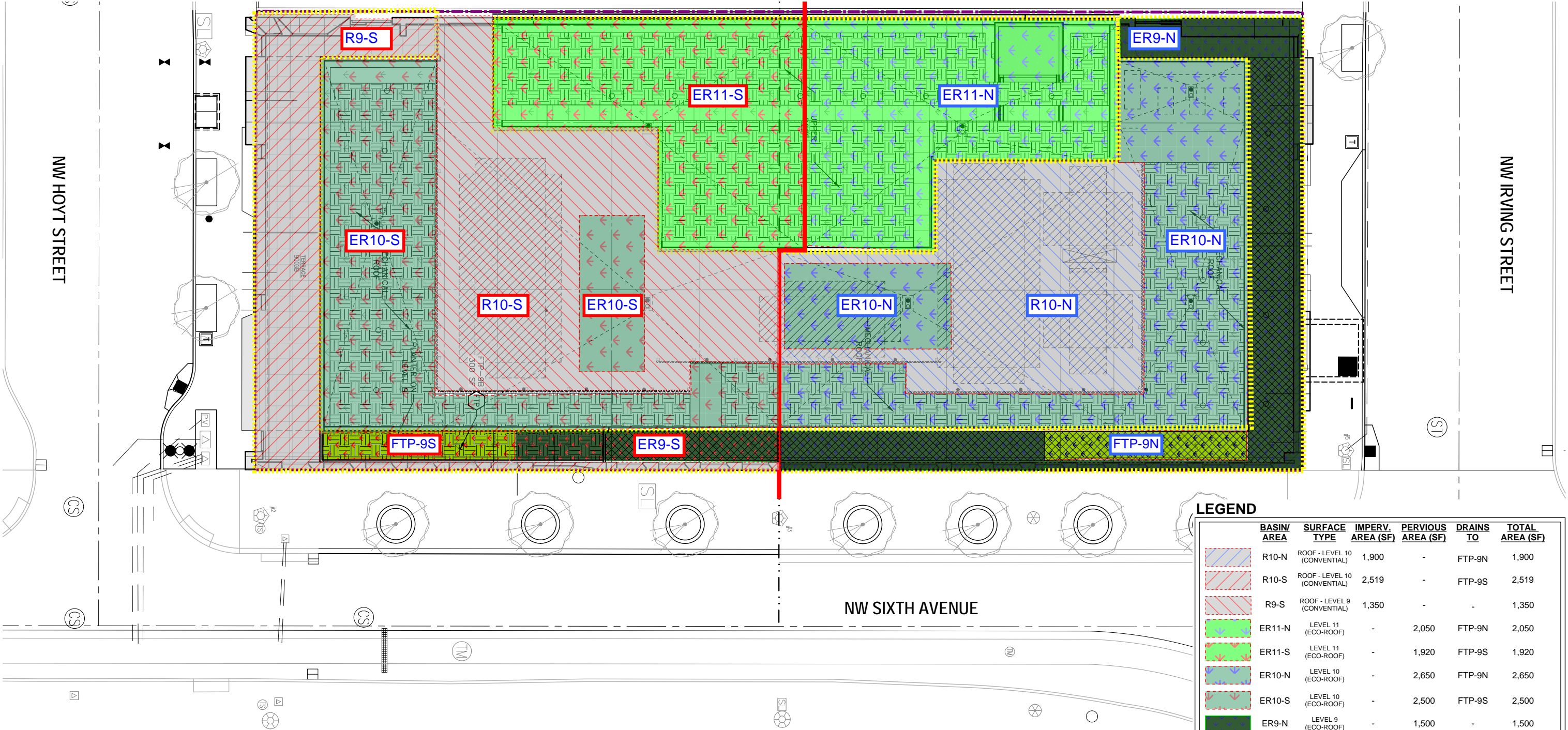
LEVEL 9		
Typ. Floor Area		13,653 SF
<div></div> Open Office		5,334 SF
<div></div> Multi-Purpose Room		1,019 SF
<div></div> Break Room		1,557 SF
<div></div> Locker Rooms		912 SF
<div></div> Conference		965 SF
<div></div> Service		1,939 SF
LEVEL 9 E EXTERIOR		
Floor Area		2,839 SF
<div></div> Terrace		996 SF
<div></div> Storm Water Planter		319 SF
<div></div> Vegetated Eco-Roof		1,117 SF
<div></div> Pavers		407 SF



STORMWATER PLAN

Post-Developed

Scale = 1" = 20'-0"



LEGEND

BASIN/ AREA	SURFACE TYPE	IMPERV. AREA (SF)	PERVIOUS AREA (SF)	DRAINS TO	TOTAL AREA (SF)
R10-N	ROOF - LEVEL 10 (CONVENTIONAL)	1,900	-	FTP-9N	1,900
R10-S	ROOF - LEVEL 10 (CONVENTIONAL)	2,519	-	FTP-9S	2,519
R9-S	ROOF - LEVEL 9 (CONVENTIONAL)	1,350	-	-	1,350
ER11-N	LEVEL 11 (ECO-ROOF)	-	2,050	FTP-9N	2,050
ER11-S	LEVEL 11 (ECO-ROOF)	-	1,920	FTP-9S	1,920
ER10-N	LEVEL 10 (ECO-ROOF)	-	2,650	FTP-9N	2,650
ER10-S	LEVEL 10 (ECO-ROOF)	-	2,500	FTP-9S	2,500
ER9-N	LEVEL 9 (ECO-ROOF)	-	1,500	-	1,500
ER9-S	LEVEL 9 (ECO-ROOF)	-	730	-	730
FTP-N	STORMWATER FLOW-THROUGH PLANTER	-	210	-	210
FTP-S	STORMWATER FLOW-THROUGH PLANTER	-	200	-	200
		5,770 SF TOTAL IMPERV.	11,760 SF TOTAL PERV.	17,530 SF TOTAL AREA	



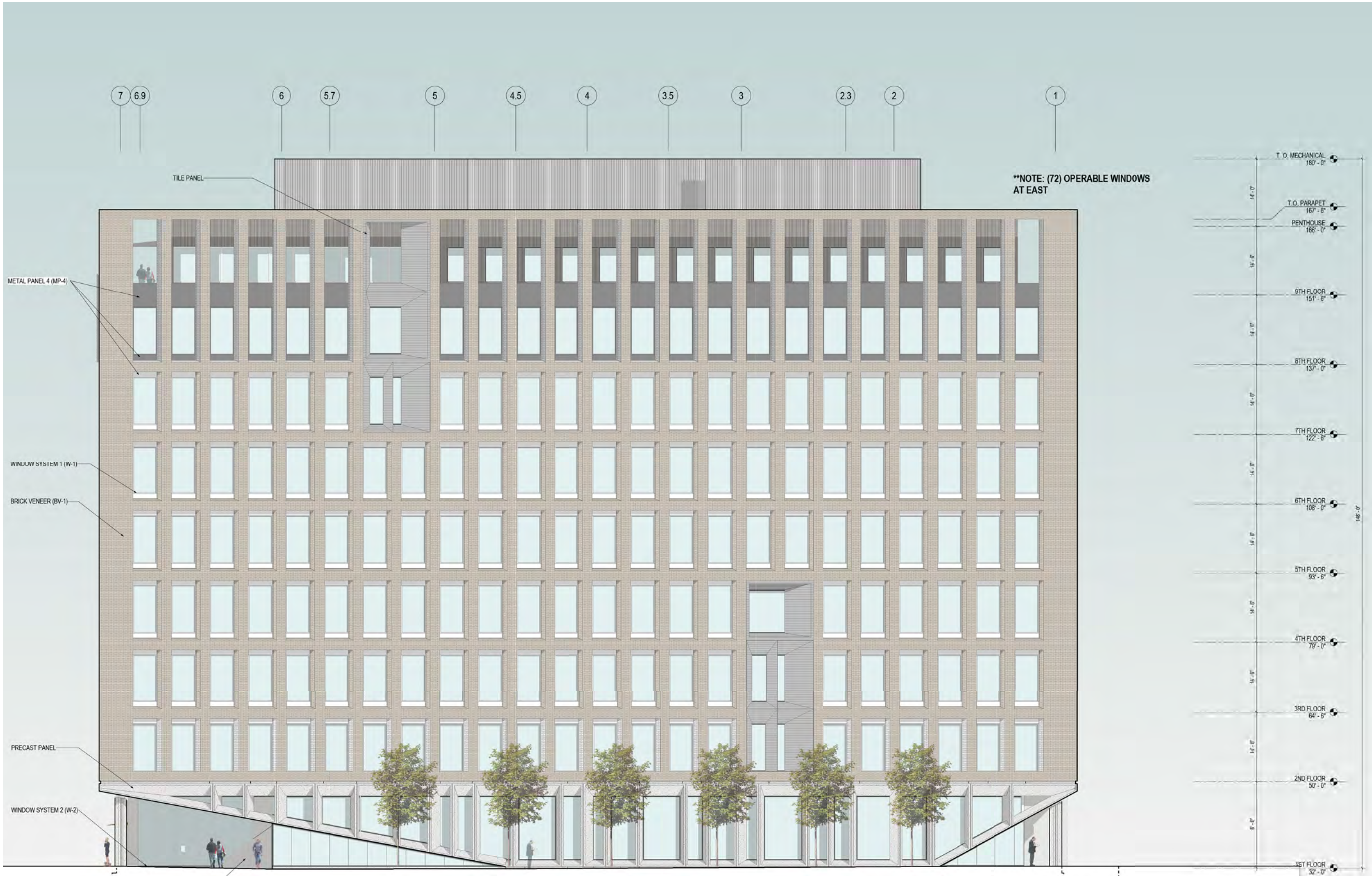
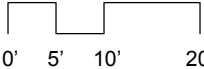
Draft

EAST ELEVATION MATERIALS

BRICK	41%
METAL PANEL	8%
GLASS	35%
TILE PANEL	3%
PRECAST CONCRETE	7%
BOX RIBBED METAL	6%

EAST ELEVATION

Scale = 1" = 20'-0"





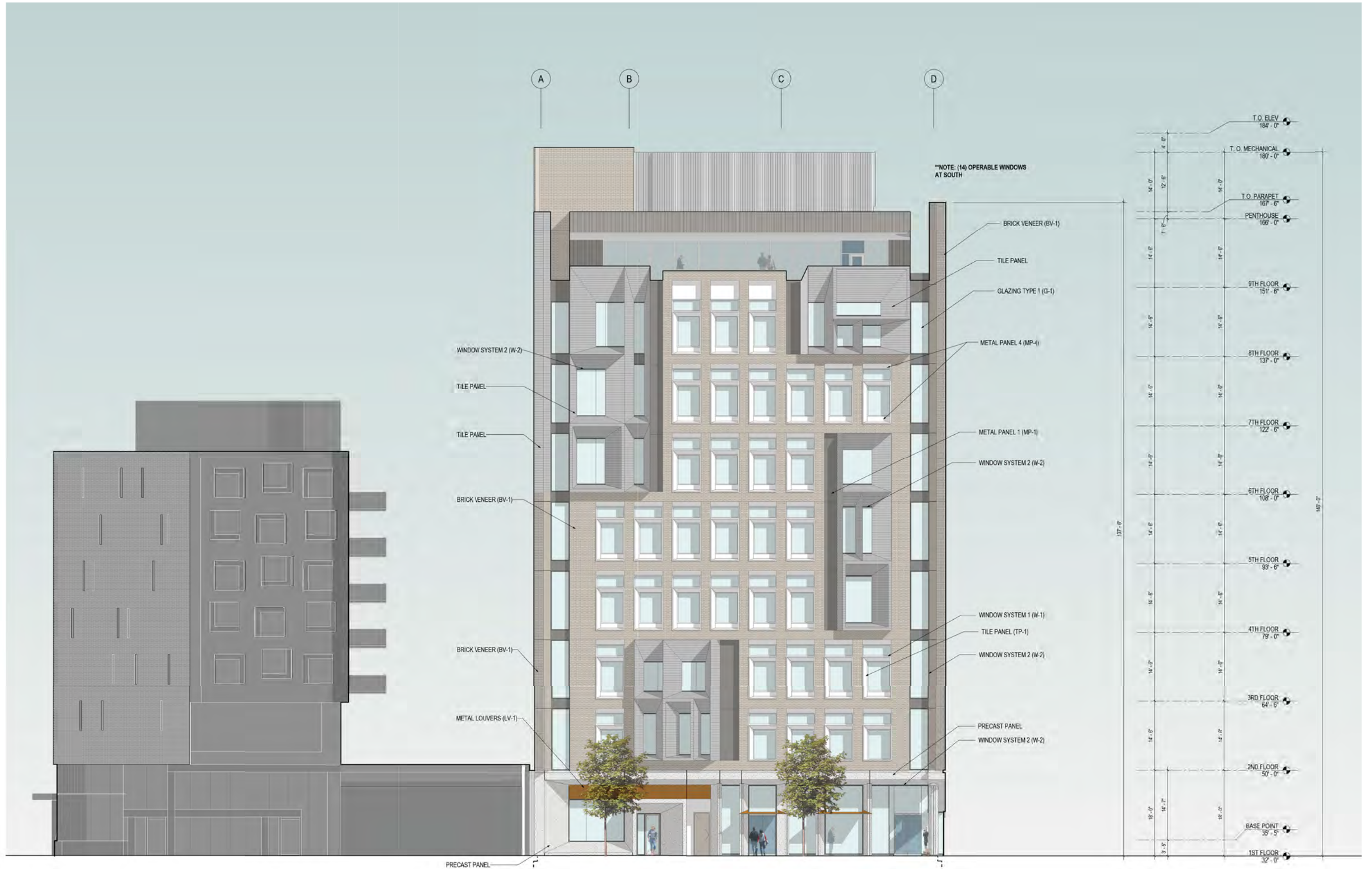
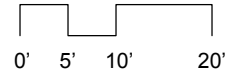
Draft

**SOUTH ELEVATION MATERIALS**

BRICK	32%
METAL PANEL	10%
GLASS	27%
TILE PANEL	16%
PRECAST CONCRETE	7%
BOX RIBBED METAL	8%

**SOUTH ELEVATION**

Scale = 1" = 20'-0"





Draft

**NORTH ELEVATION MATERIALS**

BRICK	29%
METAL PANEL	18%
GLASS	27%
TILE PANEL	14%
PRECAST CONCRETE	5%
BOX RIBBED METAL	5%
METAL COIL DOOR	2%

**NORTH ELEVATION**

Scale = 1" = 20'-0"





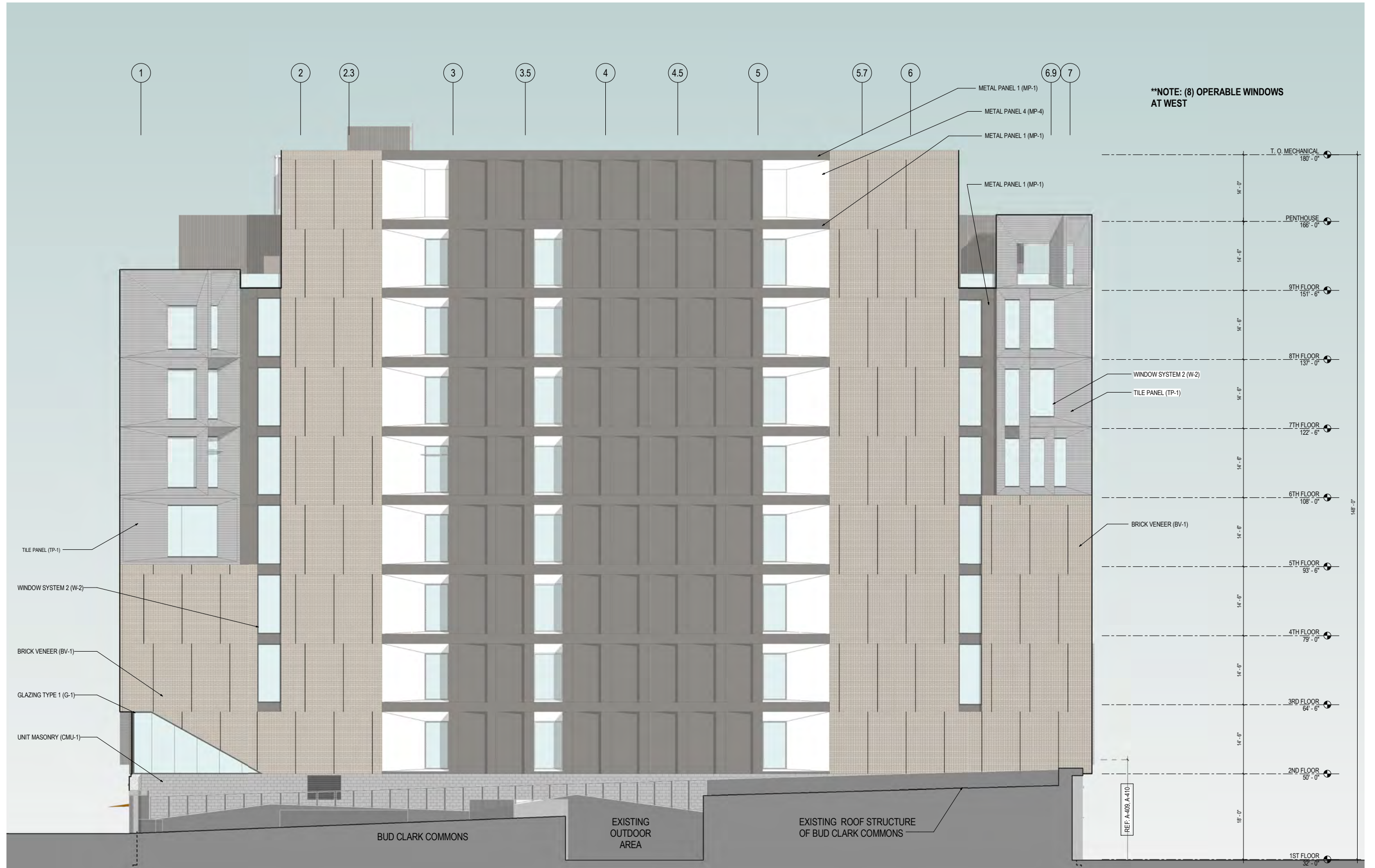
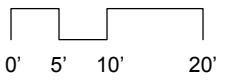
Draft

WEST ELEVATION MATERIALS

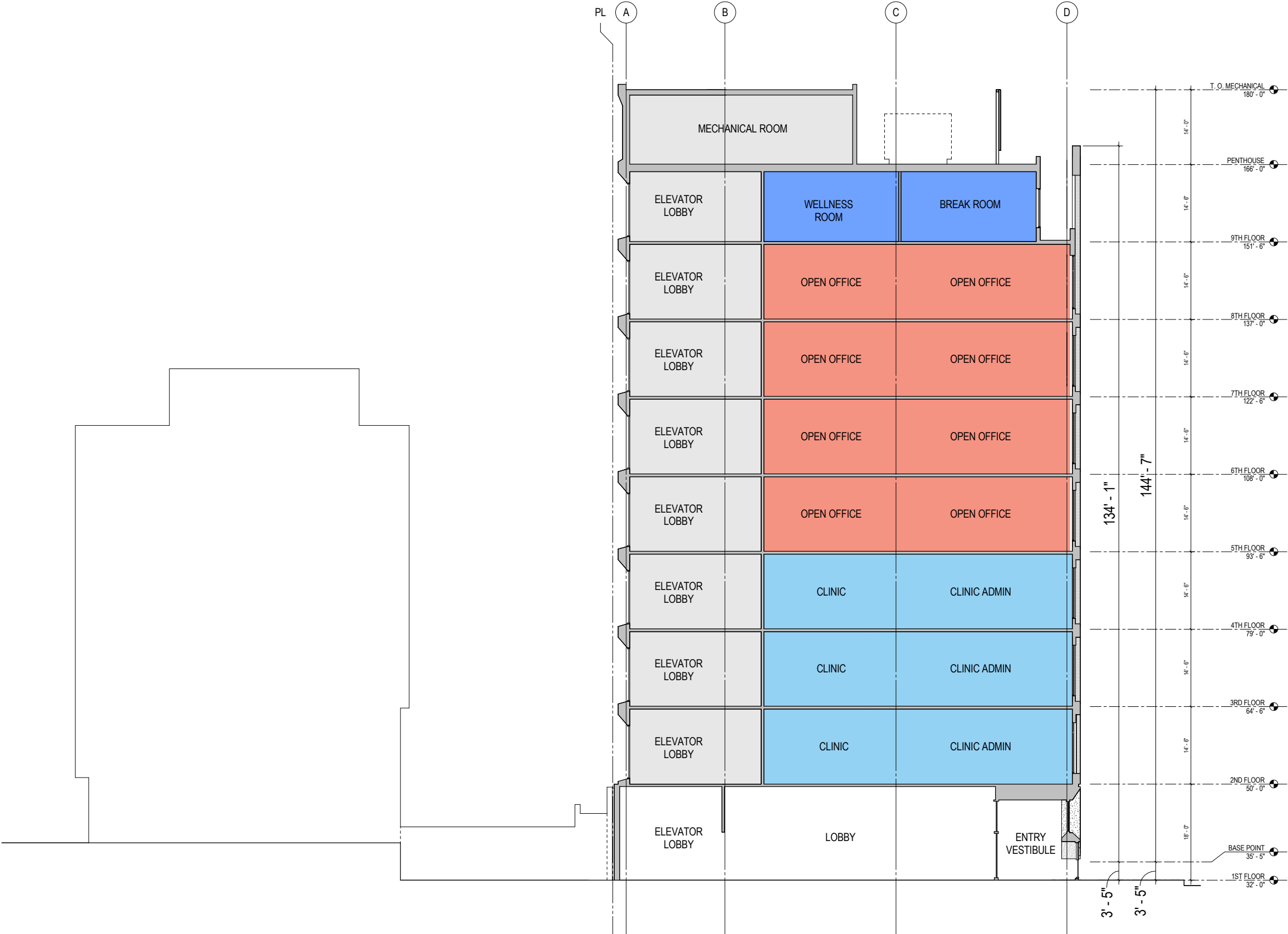
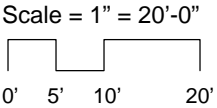
BRICK	30%
METAL PANEL	41%
GLASS	10%
TILE PANEL	7%
CONCRETE MASONRY	12%

WEST ELEVATION

Scale = 1" = 20'-0"

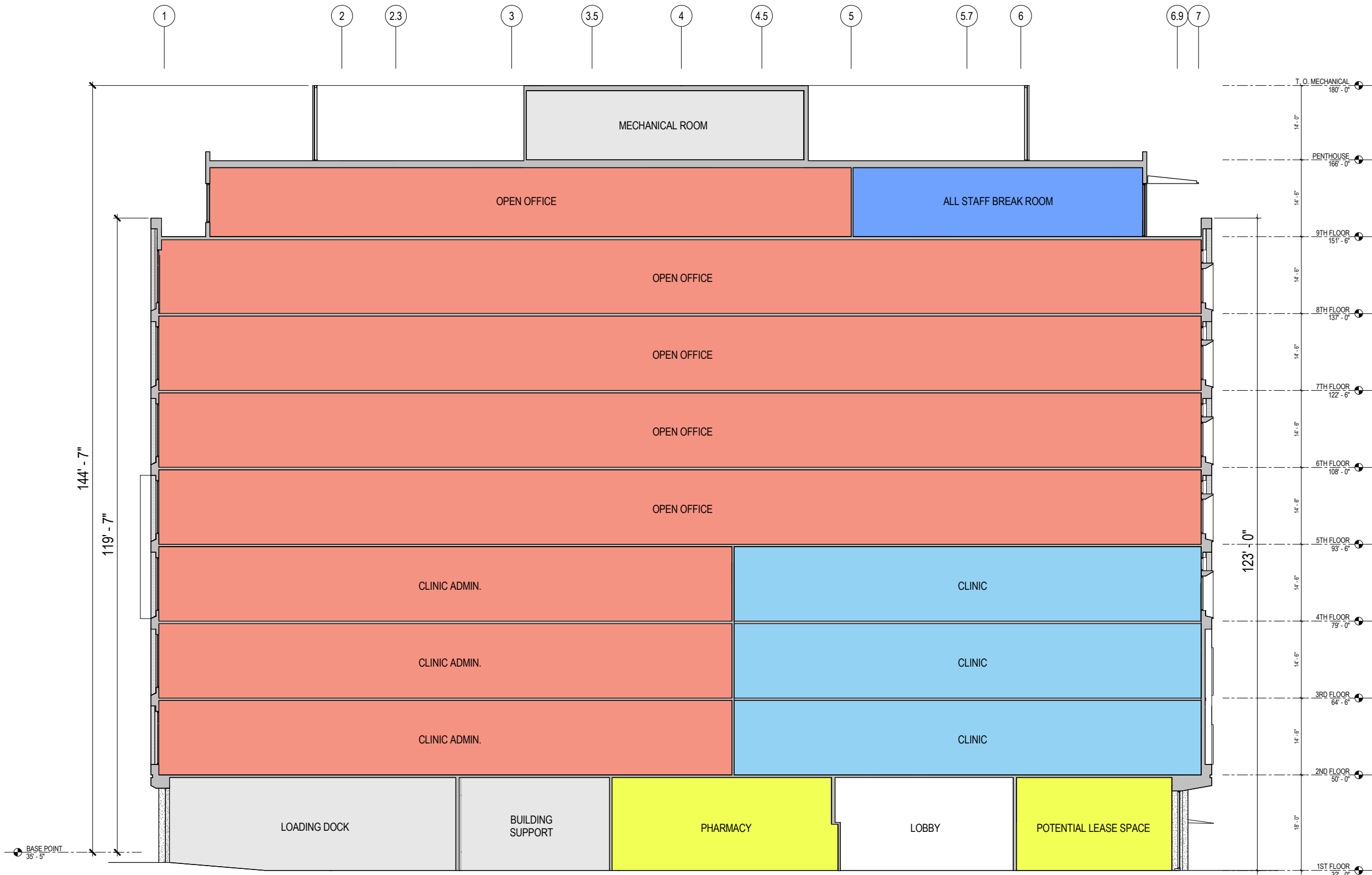
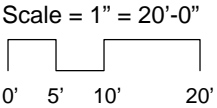


BUILDING SECTION  
East-West





BUILDING SECTION  
North-South



RENDERINGS  
 NW 6th Avenue Looking North





# RENDERINGS

Broadway Bridge Looking South





RENDERINGS



Night Rendering along NW 6th Ave.



NW Irving Gallery Entry + Loading Dock



NW Irving Staff Entry and Loading + BCC Courtyard