

**Program #60022N-(C)– Revised MCIJ**

**Version 11/22/05**

**Priority:** Safety  
**Program Offer Type:** Existing Operating  
**Related Programs:** 60022 L and 60022 M  
**Frameworks:**

**Lead Agency:** Sheriff  
**Program Contact:** Larry Aab

**Executive Summary**

This option adds the remaining two dorms and 114 beds at MCIJ. This addition will make Inverness full to its capacity of 1,014 jail beds. See attached Purchasing plan map.

The planned opening date is Friday December 9<sup>th</sup>. The cost to operate the remaining jail beds for seven months is \$710,770.00, which includes the costs for Corrections Deputies and a Corrections Counselor. The Staffing requirements to operate the 114 beds are 9.10 FTE Corrections Deputies and 1.0 FTE Corrections Counselor.

The current staffing ratio is one counselor for 71.78 inmates. There are 900 inmates currently and 12.5 Counselor positions at MCIJ. Increasing the inmates by 114 at MCIJ will require an additional 1.583 FTE. The MCSO is requesting 1.0 FTE at this time.

**Background on staffing for Corrections Deputies**

In July 2005, the Board purchased MCIJ Programs 60022L, 60022M and a portion of 60022N which included the 57 beds (P57) purchased by the City of Portland, for a total of 900 beds.

In August of 2005, the Board notified the Sheriff's Office that they had funds to open and operate the remaining 114 beds at MCIJ. The Board set the following criteria for opening:

1. The Sheriff's Office had to hire sufficient staff so as not to exacerbate overtime spending; and
2. Overtime could not be used in lieu of staffing in order to open early.

The Sheriff informed the Board that it would take 60-90 days to get staff into place in order to open both the P57 beds and the 114 vacant beds. During the ensuing 90 days, a series of events happened that facilitated the strategy for staffing the Corrections Deputy vacancies:

1. The Board elected not to purchase the Close Street Supervision Program from the Sheriff's Office. This resulted in a labor action by the Corrections Deputy bargaining unit that delayed closure until October 17. CSS was closed on Oct 17 and seven deputies were redeployed into vacancies. The labor dispute remains unresolved.
2. In September the Board corrected a funding and staffing issue in the MCIJ program offers that assured MCIJ was fully funded for 900 beds.
3. In September the Multnomah County Work Release Program was closed due to a reduction of SB 1145 funding by the State. This closure moved nine positions into other corrections assignments and reduced a like number of vacancies.
4. With the deputies reassigned from the closed programs and new hires, the MCSO can assure that overtime will not be exacerbated when opening the 114 beds. These vacancies have been and will continue to be filled from a list that began compilation in May with a pool of 226. Of that pool, 36 failed the initial screening. Of the 190 remaining candidates a thorough background process was undertaken on each. Some of the things in which a candidate must be successful include:
  - Statement of Personal History to provide family, criminal history, employment, etc. information
  - Written exam to assess math, written, reasoning, and comprehensive skills
  - Physical agility testing
  - Background including reviews of driving history, criminal history, and fingerprints
  - Preliminary psychological testing (3 hour battery of exams) to assess suitable demeanor to work safely and effectively in a corrections environment.
  - Assessment Center to evaluate reasoning skills, leadership skills, etc. all in a small group setting
  - Command Staff interview

At the point of conditional job offer:

- Physical examination to include screening for alcohol and/or drug use, physical health, etc.
- More intense psychological exam to assess suitability for employment in a corrections environment.

At any point along the way, the candidate may withdraw from the process or the candidate may be determined to be so unacceptable by the Sheriff's Office that the processing is terminated and the candidate is notified of disqualification. In addition, the amount of resources directed to facilitate the hiring process is dependant upon the urgency of the hire. Once we were notified by the Board of their desire to open the 114 beds, resources were redirected to the background and hiring process to identify qualified candidates. Sufficient candidates have been identified and job offers extended. As space becomes available, candidates will attend a 5 week training at the Oregon Department of Public Safety Standards and Training in Monmouth Oregon. This training requirement is necessary to successfully be certified as a Corrections Deputy and must be completed within one year of hire.

Sufficient deputies are hired to open the remaining 114 beds at MCIJ on December 9, 2005 and more are in the hiring process. See Table One.

Our aim in opening the beds on December 9th is to assist with the Mayor's initiative in the downtown area as well as assist us in coping with the additional demands on the criminal justice system during the holiday period. We believe our citizens will feel more confident in accessing the community with the addition of these resources during this period of year.

#### Staffing for FY 05/06

Table One

	Jan-05	Jun-05	Aug-05	Oct-05	Nov-05
Number of Beds	1,579	1,579	1,579	1,519	1,576
Corrections Deputies	408.00	411.00	409.00	407.00	412.00
Corrections Sergeants	41.00	41.00	44.00	44.00	44.00
Total FTE	449.00	452.00	453.00	451.00	456.00
Total Budgeted FTE	461.73	461.73	459.61	450.61	450.61
Total Vacancies	12.73	9.73	6.61	-0.39	-5.39

October 05 The decrease in Budget FTE is due to the elimination of 9.0 positions due to the loss of SB 1145 revenue and the closure of MWRC Table One includes 14 new Corrections Deputies as well as regular attrition. November 05 includes the number of staff predicted by the close of the month.

### **Background for Adding a Corrections Counselor**

Last budget year, Inmate Programs 60017 was a separate program offer. Next year, programs and support services associated with inmates will be included with jail bed purchase offers. Last year, the Commissioners purchased 100% of the Inmate Programs, Program Offer, and the Work Release Program Offer 60020A. When Work Release Program was closed September 31, three Corrections Counselor positions were eliminated. There is a need to restore one Corrections Counselor position for 114 additional offenders being added with this Offer.

Counselors provide a variety of functions including: addressing concerns and needs of offenders to ensure safety and compliance with statutory mandates; case management; group counseling; educational services; mental health services and direct transition linkage with community providers (A&D, mental health, jobs, housing, etc.). They also screen, evaluate offenders for work crew placement; provide orientation to help offenders navigate through the complex criminal justice system; provide mental health services that link offender to services in the community; equip offenders with skills to manage behavior; and offer group counseling to diminish criminal thinking errors.

### **Program Description**

This program option funds the staff and resources necessary to operate East dorms 1 and 2, and provides housing and care for 114 inmates. Along with Programs 60022L, 60022M, and 60022 N-A and N-B MCIJ will be operating at its design capacity of 1,014 beds (see MCIJ purchase planning map).

### **Program Justification**

MCSO serves the vital function of providing corrections services to all of Multnomah County. In order to ensure public safety, provide a means to interrupt and intervene in the criminal cycle, and ready persons for treatment, detention services are needed, pursuant to judgment of the courts. It is also MCSO's responsibility to maintain facilities to high jail standards in order to care for inmates in a professional and safe manner.

Corrections Counselors assist in maximizing efficient use of jail beds and a safe jail environment by providing the required programming and engaging with community partners for the safe transition of high need offenders in the community.

## **Performance Measures**

The performance measures are linked to the Safety priority by "Holding Offenders Accountable" and Accountability through "Meaningful Evaluations and Constructive Feedback." The measures include:

- The biennium audit for compliance of Oregon Jail Standards (OJS) set forth by the Oregon State Sheriff's Association (OSSA)
- The number of tort claims filed by offenders regarding jail operations.

Correction Counselors support the functioning of the custodial facilities and contributes to the Treatment Service Continuum. Measures include:

- Track the saving of jail beds by placing offenders in mental health programs.
- Track the saving of jail beds by placing offenders in community Alcohol and Drug treatment programs prior to release.
- Maintain and track research regarding counseling of offenders awaiting release to treatment programs.

## **Summary of last year's program results and this year's expected results**

OJS audits occur every two years. Last year, MCIJ received a 98.7% full compliance with no areas determined to be in non-compliance. Expectations are to maintain or exceed this high rating in future audits.

For Corrections Counselors, during 2004, 15,942 secure jail beds were saved by placement of offenders in work release and mental health community beds. There were 10,800 secure jail beds saved by placement of offenders in Alcohol & Drug community treatment beds. Inmate Programs provided 1,296 group counseling sessions, with 10,147 offenders attending.

## **Program Mandate: 2 Mandated Program with Funding/Service Level Choice**

In accordance with the state statute the Sheriff is required to maintain local detention facility(ies). Oregon statutes mandate the operations of safe and humane detention facilities, which require sufficient staff to perform functions involving security, control, custody and supervision of all confined. Mandates include provisions for legal confinement, clothing, bedding, nutritional food, medical services, legal access, sanitation, life safety compliance, offender responsibility of conduct, exercise of religion, educational, and work programs.

For Corrections Counselors there are several statutory and judicial decisions which mandate the treatment of prisoners. A brief list includes:

- ORS 169.170 – Assignment of county prisoners to public works
- Court decisions including for Legal Library access: Johnson vs. Avery, 1969, Wolff vs. McDonnell, 1974, and Bounds vs. Smith, 1977
- ORS 343.035 – Educational requirements of incarcerated
- ORS 336.187 – Educational reporting requirements for incarcerated Court Mandated Sentencing Orders
- Court requirements to evaluate and refer to treatment/community placement programs.
- Oregon Jail Standards: Chapters: 1, access to courts; 2, mental health; 3, educational; 4, rehabilitation/community treatment.

## Revenue/Expense Detail 60022N –(C)

	Proposed General Fund	Proposed Other Funds	Proposed General Fund	Proposed Other Funds
<b>Program Expenses</b>	2005	2005	2006	2006
Personnel			\$567,061	0
Contracts			\$356	0
Materials & Supplies			\$64,237	0
Internal Services			0	0
Capital Outlay				
Subtotal: Direct Exps:			<b>\$631,654</b>	<b>0</b>
Administration			\$31,646	
Program Support			\$47,470	
Subtotal: Other Exps:			<b>\$79,116</b>	
Total GF/non-GF:			<b>710,770</b>	<b>0</b>
Program Total:			<b>710,770</b>	
Program FTE			10.1	0
<b>Program Revenues</b>				
Indirect for dep't Admin				
Intergovernmental				0
Program Revenue for Admin				
<b>Total Revenue:</b>				

## Explanation of Revenues

N/A

## Significant Program Changes

Opening the remaining 114 beds at MCIJ will decrease the number of population emergency releases occurring at our current funded capacity level.

**Total Cost**  
\$26,580,269\*  
**Total FTE** 176.13

## Inverness Jail Purchasing Plan

FY 05/06 Budget Offerings  
Offers are subject to change



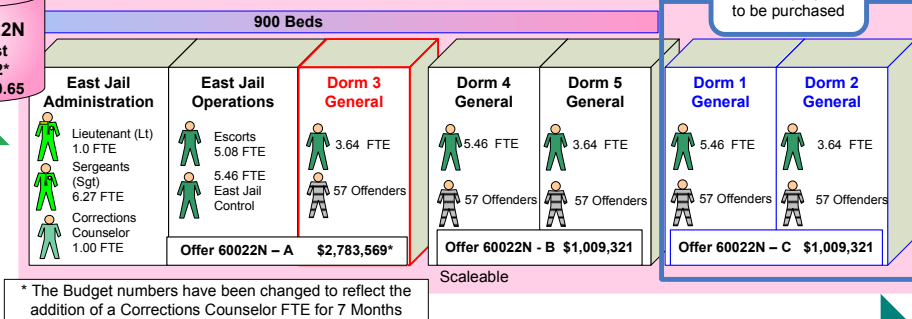
Multnomah County  
Sheriff's Office

The Board has purchased Offers: 60022L, 60022M and portions of 60022N

1,014  
Beds

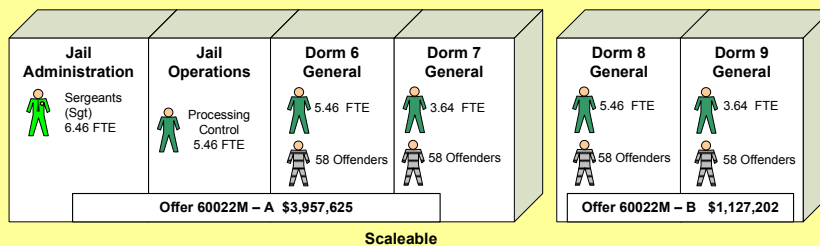
**Offer 60022N**  
Total Cost  
\$4,802,212\*  
Total FTE 40.65

### Offer 60022N – 285 Beds



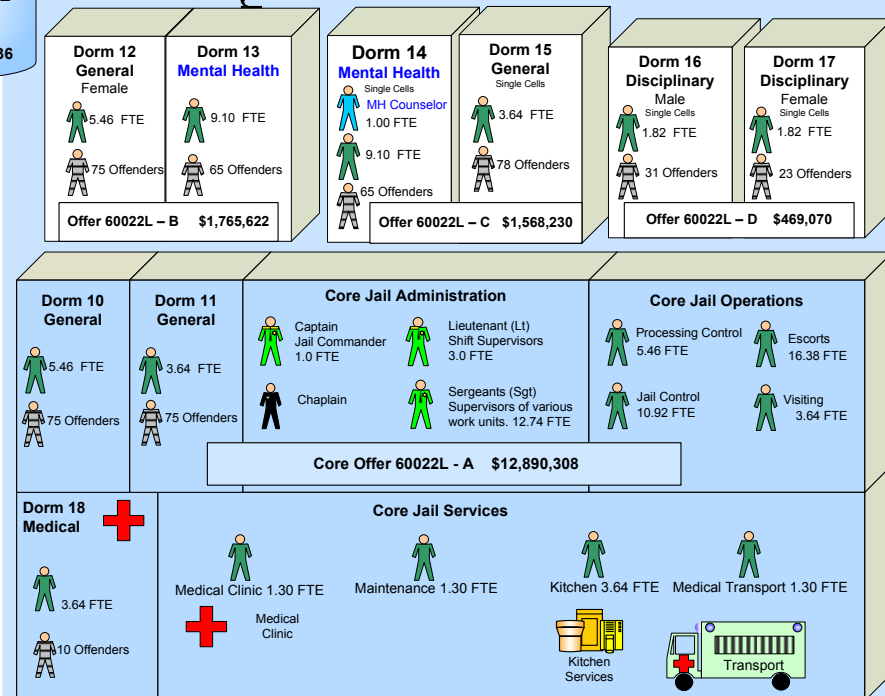
**Offer 60022M**  
Total Cost  
\$5,084,827  
Total FTE 30.12

### Offer 60022M – 232 Beds



**Offer 60022L**  
Total Cost  
\$16,693,230  
Total FTE 106.36

### Offer 60022L – 497 Beds



Costs include FTE, M&S, and ISRs

Blocks in White are Scalable  
Left to right to purchase, and right to left to scale down.

Dorm 3 in Red is purchased in part by City of Portland System wide contribution

