

Legal Descriptions  
Exempt Minor Partition  
Bryon Walker Tract

Parcel No. 1 A tract in the SE $\frac{1}{4}$  of Section 35 T. 1 N.

R. 2 E. Wm, county of Multnomah, state of Oregon as follows:

Beginning at the southeast corner of Lot 114 of Ascot Acres and run along the south line of Lot 114 West 110.00', run N 00°51' E. paralell to east lot line for 70.25', run paralell to south line of lot East 110.00' to east line of lot 114, run along east lot line of lot 114 S 00°51' W 70.25' to point of beginning, Contains 7278 sq. ft. more or less.

Parcel No. 2 A tract in the SE $\frac{1}{4}$  of Section 35 T. 1 N.

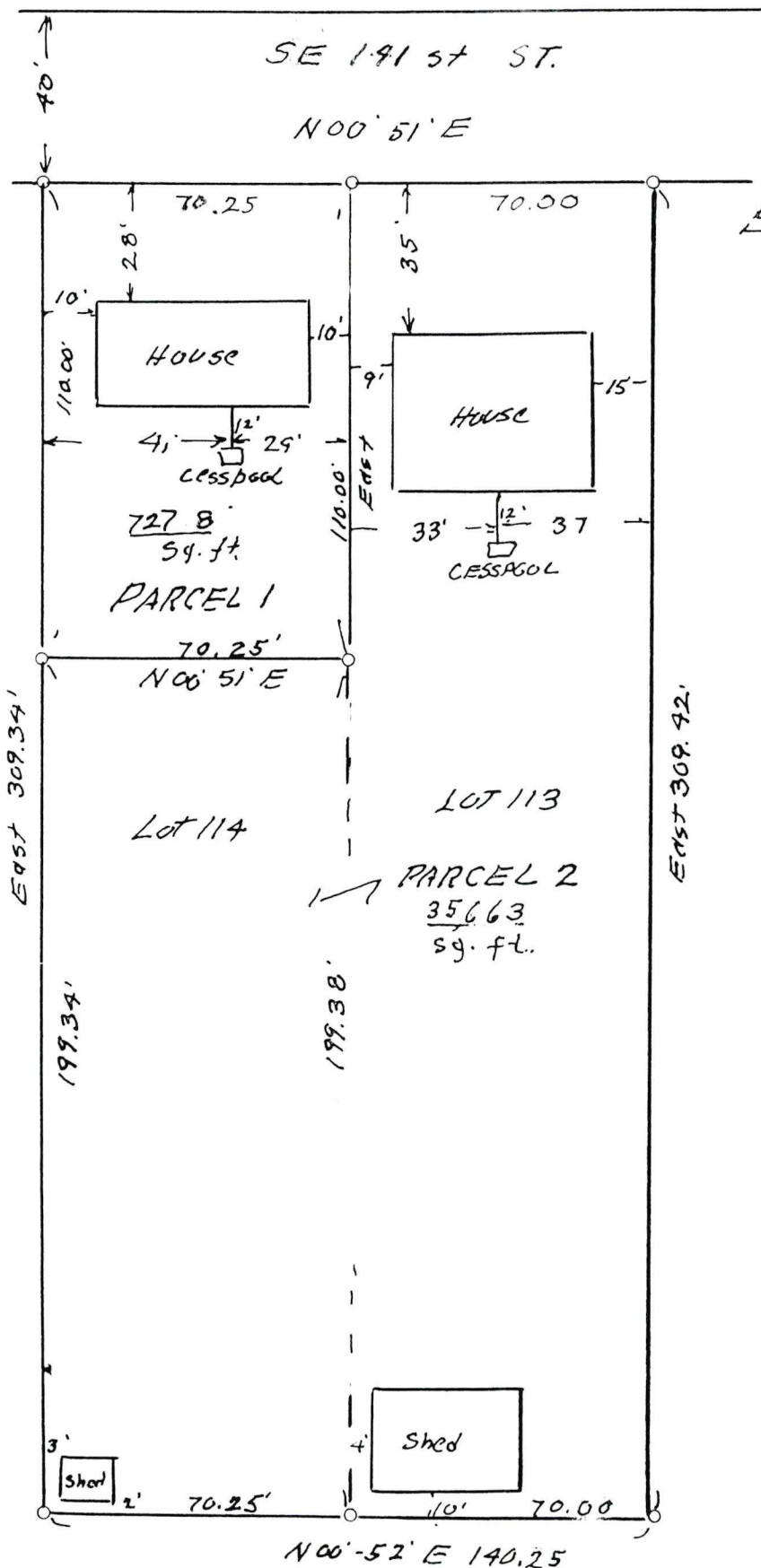
R. 2 E. Wm., county of Multnomah, state of Oregon as follows:

Beginning at the northeast corner of Lot 113 Ascot Acres and run along east line of Lot 113 S 00°51' W 70.00' leave lot line and run paralell to the north lot line West 309.42' to west line of Lot 113, run along west line of lots 113 and 114 N 00° 52' E 140.25', leave lot line and run paralell to south line of lot 114 East 199.34', run paralell to east line of Lot 114 S 00°51' W 70.25' to south line of Lot 114, run along south line of Lot 114 East 110.00' to point of beginning, Contains 35,663 square feet more or less.



12 Oct 82

3044



Scale 1" = 40'

Exempt Minor Partition Map  
for  
BYRON WALKER  
of  
S $\frac{1}{2}$  Lot 114 & N $\frac{1}{2}$  Lot 113  
ASCOT ACRES  
SE $\frac{1}{4}$  Section 35  
T. 1 N., R. 2 E  
Multnomah County  
completed Aug 9, 1982

REGISTERED  
PROFESSIONAL  
LAND SURVEYOR

*Charles E. Reynolds*

OREGON  
OCTOBER 22, 1984  
CHARLES E. REYNOLDS  
334



CHARLES E. REYNOLDS  
5819 N. E. 25th  
PORTLAND, ORE. 97211

EXEMPT MINOR PARTITION  
(Under Mult Co Ord #174)

date **12 OCT 1982**  
by *Gary L. Clifford*  
for Irving G. Ewen

Land Development Section  
MULT CO ENVIRON SERVICES

Legal Descriptions  
Exempt Minor Partition  
Byron Walker Tract

Parcel No. 1 A tract in the SE $\frac{1}{4}$  of Section 35 T. 1 N.  
R. 2 E. Wm, county of Multnomah, state of Oregon as follows:  
Beginning at the southeast corner of Lot 114 of Ascot Acres  
and run along south line of Lot 114 west 110.00', run  
N.00°51' E paralell to east line of lot for 70.25', run  
paralell to south line of lot east 110.00' to east line of  
lot 114, run along east line of lot 114 S 00°51' W 70.25'  
to point of beginning. Contains 7278 sq. ft. more or less.

Parcel No. 2 A tract in the SE $\frac{1}{4}$  of Section 35 T.1N.  
R.2E.Wm., county of Multnomah, state of Oregon as follows:  
Beginning at the northeast corner of Lot 113 Ascot Acres  
and run along east line of lot 113 S 00°51' W 70.25',  
leave lot line and run paralell to north lot line West  
309.42' to west line of lot 113, run along west line of lots  
113 and 114 N 00° 52' E 140.50', leave lot line and run  
paralell to south line of lot 114 East 199.34', run  
paralell to east line of lot 114 S 00° 51' W 70.25' to  
south line of lot 114, run along south line of lot 114  
East 110.00' to point of beginning. Contains 35,740  
sq. ft. more or less.

**EXEMPT MINOR PARTITION**  
(Under Mult Co Ord #174)

date 17 AUG 1982  
by Gary L. Clifford  
for Irving G. Ewen

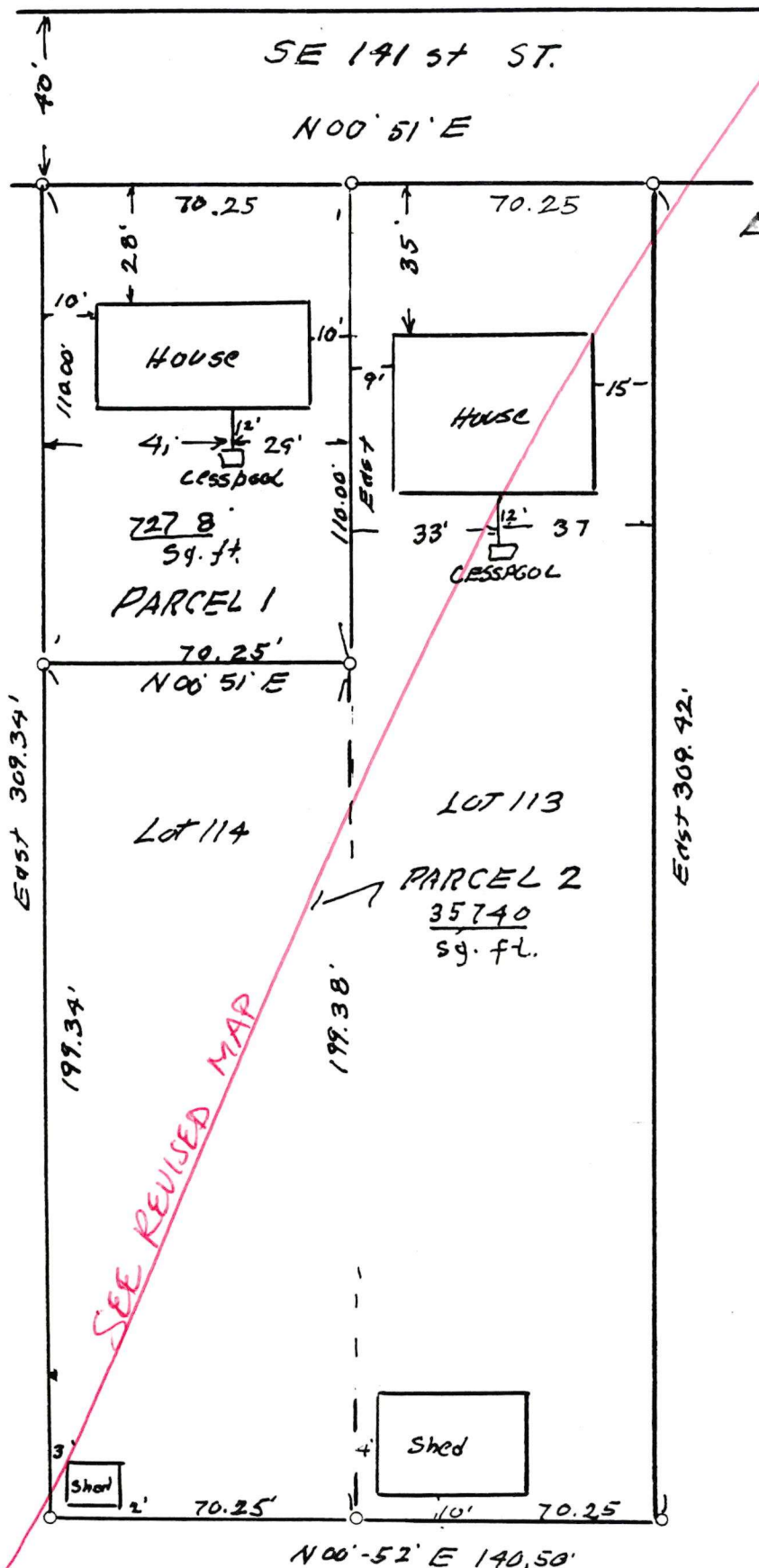
Land Development Section  
MULT CO ENVIRON SERVICES

SEE  
REVISED LEGAL DESCR.

17 AUGUST 1982

3044





Scale 1" = 40'

Exempt Minor Partition Map  
for  
BYRON WALKER

of

S 1/2 Lot 114 & N 1/2 Lot 113

ASCOT ACRES

SE 1/4 Section 35

T 1 N, R 2 E

Multnomah County

completed Aug 9, 1982

REGISTERED  
PROFESSIONAL  
LAND SURVEYOR

*Charles E. Reynolds*

OREGON  
OCTOBER 23, 1974  
CHARLES E. REYNOLDS  
334



CHARLES E. REYNOLDS  
5819 N. E. 25th  
PORTLAND, ORE. 97211

EXEMPT MINOR PARTITION  
(Under Mult Co Ord #174)

date 17 AUG 1982

by *Gary Z. Clifford*  
for Irving G. Ewen

Land Development Section  
MULT CO ENVIRON SERVICES