

District Attorney

Table of Contents

Vision	2
Department Services	3
Budget Issues and Highlights.....	3
Department Performance Trends	6
Budget for FY 2000	7
Department Organization Chart	8
Office Administration	9
Administrative Services	10
Medical Examiner.....	10
Felony Court	12
Felony Trial Teams.....	13
Civil Forfeiture Unit	13
Misdemeanor Court Division.....	15
Trial Unit.....	16
Community District Attorney Programs	17
Family Justice	18
Juvenile Court Trial Unit	19
Domestic Violence Unit.....	19
Victim's Assistance Program.....	19
Child Abuse Team	19
Child Support Enforcement	20

District Attorney

Vision

The District Attorney's Office recognizes the high probability that crime in the county will remain a significant public policy issue. At the same time the future is more optimistic if certain trends continue to evolve. Law enforcement and other public agencies are equipping themselves to become faster at identifying emergent criminal trends such as child abuse, domestic violence and gang activity. Greater productivity will be realized because of the intensive use of technology and public safety management practices will be more targeted as a result of better information.

The District Attorney's Office will rely upon a mix of centralized and decentralized prosecution units organized to mirror the specific crime problem. The Neighborhood DA program and coordination of services with neighborhood associations and business districts are illustrations of a decentralized approach to community crime control. Resources will remain in short supply and this will further drive the need to use differing combinations of public, non-profit and private organizations. The Regional Organized Crime/Narcotics (ROCN) Task Force and the Multnomah County Child Abuse Team are examples of a team approach. These avenues of crime control are dependent upon collaboration, management styles, techniques and decision-making processes.

Beyond the need and requirements for sound management practices, law enforcement public safety entities will increasingly rely upon the community itself. Community policing is an established and well researched strategy now in use by major city police departments. These approaches need not be limited to police agencies.

Prosecutors and the courts will also establish organizational structures and strategies that more closely match police and community needs. This will mean devoting more time and attention to quality of life crimes and other crimes that are often the precursor to more serious neighborhood crimes.

District Attorney

Department Services

The District Attorney's Office provides:

- Felony Prosecution
- Targeted Crimes Prosecution (ROCN Task Force, Gang Unit, Forfeiture, Domestic Violence)
- Misdemeanor and Violation Prosecutions (DUII, Traffic Crimes)
- Multidisciplinary Child Abuse Team
- Juvenile Delinquency cases
- Juvenile Dependency cases
- Termination of Parental Rights
- Neighborhood DA Program
- Child Support Enforcement
- Victims Assistance

Budget Issues and Highlights

The District Attorney's Office investigates and prosecutes a wide variety of crimes and infractions. Resources are directed as emerging criminal trends are identified by the various local law enforcement agencies. In the coming year, the DA's Office will focus on the following issues.

Family Justice Strategies

The connection between the various components of the Family Justice Division is crucial to the effective delivery of justice in Multnomah County. The Family Justice Division confronts a broad range of crimes and behaviors surrounding families. The success of any one component is dependent in many cases on the cooperation of other units within the Division.

Key Facts and Findings:

The District Attorney's Office Family Justice Division encompasses the following areas: Child Support Enforcement, Child Abuse, Domestic Violence, Victim's Assistance, Juvenile Court Trial (juvenile delinquency, dependency and termination of parental rights).

Each of these units and programs regularly comes into contact with the others. The simplest example is the Domestic Violence Unit and the Victim's Assistance Program. While the DV Unit prosecutes the case, the Victim's program will work to assure the victim's cooperation as well as keeping them informed about the process. At a more complex level the Child Abuse Unit and Juvenile Court Trial Unit cross paths on a regular basis. Children who are abused may need to be removed from their homes and then the parents' rights terminated. This happens while the Child Abuse Unit prosecutes the abusers.

District Attorney

The multiple facets of each of these cases facilitate many opportunities for contact and information sharing. Such sharing occurs among not only units within the prosecutors' office, but also with law enforcement agencies, State Office of Services to Children and Families, the Department of Juvenile Community Justice and the Courts. This holistic approach assures more thorough investigation of cases by involving many of the parties impacted by the crime or event.

Financial Impact:

None at this time. There may be future opportunities due to greater efficiencies from juvenile dependency.

Board Action:

There are no additional program resources included in the Chair's Proposed Budget.

Presence in Gresham

The District Attorney's Office is working closely with the City of Gresham to assure that services offered by the District Attorney are readily available to the citizens of Gresham and other jurisdictions of East Multnomah County. It is important to provide these services to the growing diverse populations in Gresham and other cities of East County. Ready access to child support, domestic violence, misdemeanor court and victim's assistance services allow citizens and victims of crime greater access to criminal justice services.

Key Facts and Findings:

The District Attorney's Office assigned a Neighborhood DA and a Legal Assistant to Gresham in 1994. This was in addition to the part time Deputy DA which covered cases at the Gresham Misdemeanor Court. In 1999 the District Attorney is adding a child support office, a Domestic Violence Deputy DA, and changing the misdemeanor Deputy to full time in Gresham. Office space located with the Gresham Police Department was occupied in March 1999.

Financial Impact:

The child support office (2.00 FTE) was added within SED's constraint budget. The District Attorney's Office submitted a Decision Package to provide increased outreach to victims of domestic violence in East County.

Board Action:

A Deputy DA position dedicated to domestic violence cases, submitted as a Decision Package, has been included in the Adopted Budget. The impact on the District Attorney's budget will be **about \$89,000** in FY 1999-2000.

District Attorney

Drug and Property Crimes

The defendants which pass through the Drug Unit in many cases also pass through the Property Crimes Unit. There are opportunities to address this issue of addicts committing crimes through collaborative efforts in drug treatment and greater prosecutorial attention to property crimes, particularly fraud and theft. The ability of the District Attorney's Office to craft effective pleas and sentences to reduce the occurrence of both drug and property crime is crucial to reduce these crimes in our community.

Key Facts and Findings:

Repeat Property Offenders ties to Substance Abuse:

- 1997: 74 % of adult arrestees tested positive for drugs
- 1997: 41% of juvenile arrestees tested positive for drugs

The ability to house offenders in secure alcohol and drug beds is a key component to breaking the cycle which many defendants find themselves in.

Financial Impact:

A Decision Package to address White Collar Crime was submitted by the District Attorney's Office. This Decision Package will help to address part of this problem by focusing on an oft forgotten segment of property crimes. Such crimes occur as an effort to sustain a drug habit.

Board Action:

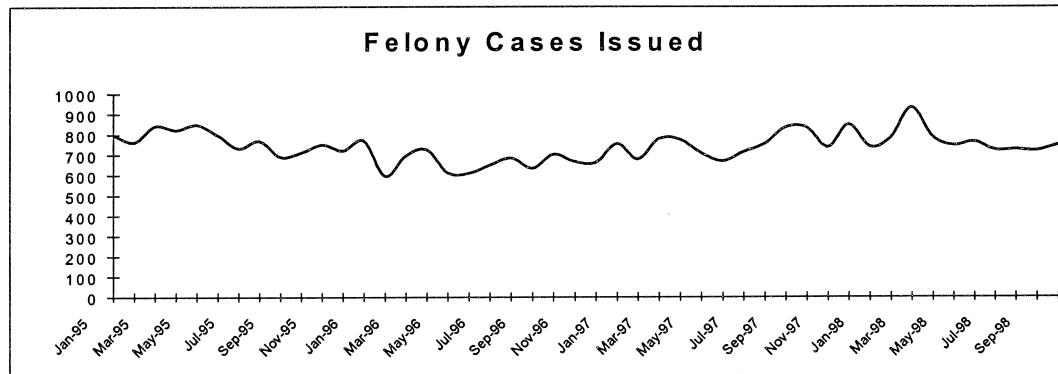
A Deputy DA position dedicated to investigation and prosecution of white collar crimes (i.e.; fraud and embezzlement.) It is expected that this position will enable the DA's Office to prosecute an additional 150-300 cases per year. This position is budgeted to cost **approximately \$80,000** in FY 1999-00.

District Attorney

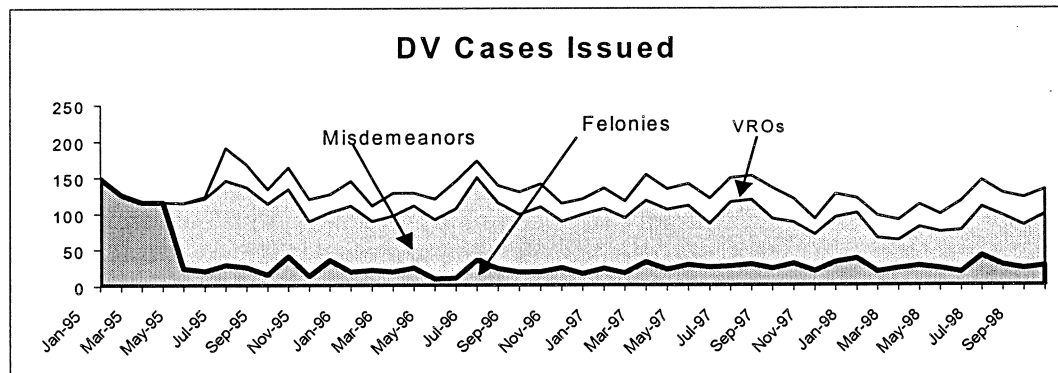
Department Performance Trends

The charts below show the changing case profiles in the District Attorney's Office. Data is collected through the case tracking system (DACTS) and is benchmarked against prior year figures.

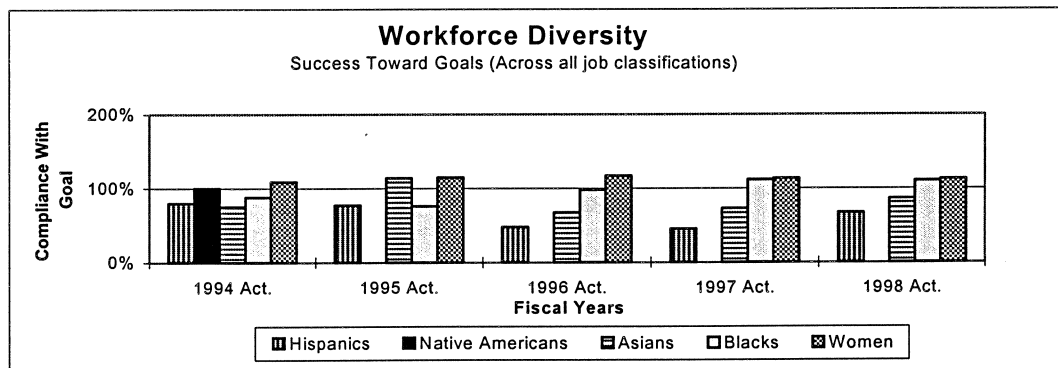
This graph shows the current trend in felony cases issued by month in the District Attorney's Office.



In May 1997 the DA's Office began counting Domestic Violence misdemeanors and felonies. Soon after it began counting Violations of Restraining Orders (VROs).



Actual hires meet or exceed Affirmative Actions goals for Women and African-Americans. Strategic plans are in place to improve statistics for Hispanics, Asians, and Native Americans.



District Attorney

Budget for FY 2000

The District Attorney's Office budget for FY 99-00 totals slightly more than **\$19 million and includes 225.32 FTE**. The portion of the budget supported by the General Fund is **\$14.4 million** while grants and other dedicated revenues account for slightly less than \$5 million.

<u>Budget Trends</u>	1997-98	1998-99	1998-99	1999-00	
	1997-98	Current	Adopted	Adopted	
	<u>Actual</u>	<u>Estimate</u>	<u>Budget</u>	<u>Budget</u>	<u>Difference</u>
Staffing FTE	198.88	215.50	219.14	225.32	6.18
Personal Services	\$11,780,547	\$13,159,712	\$13,226,347	\$14,221,698	\$995,351
Contractual Services	865,949	1,504,734	1,563,846	1,631,557	67,711
Materials & Supplies	2,390,694	2,539,240	2,693,956	3,105,491	411,535
Capital Outlay	<u>74,480</u>	<u>60,000</u>	<u>63,197</u>	<u>85,600</u>	<u>22,403</u>
Total Costs	\$15,111,670	\$17,263,686	\$17,547,346	\$19,044,346	\$1,497,000
Program Revenues	\$5,045,654	\$5,158,173	\$5,261,357	\$5,629,082	\$367,725

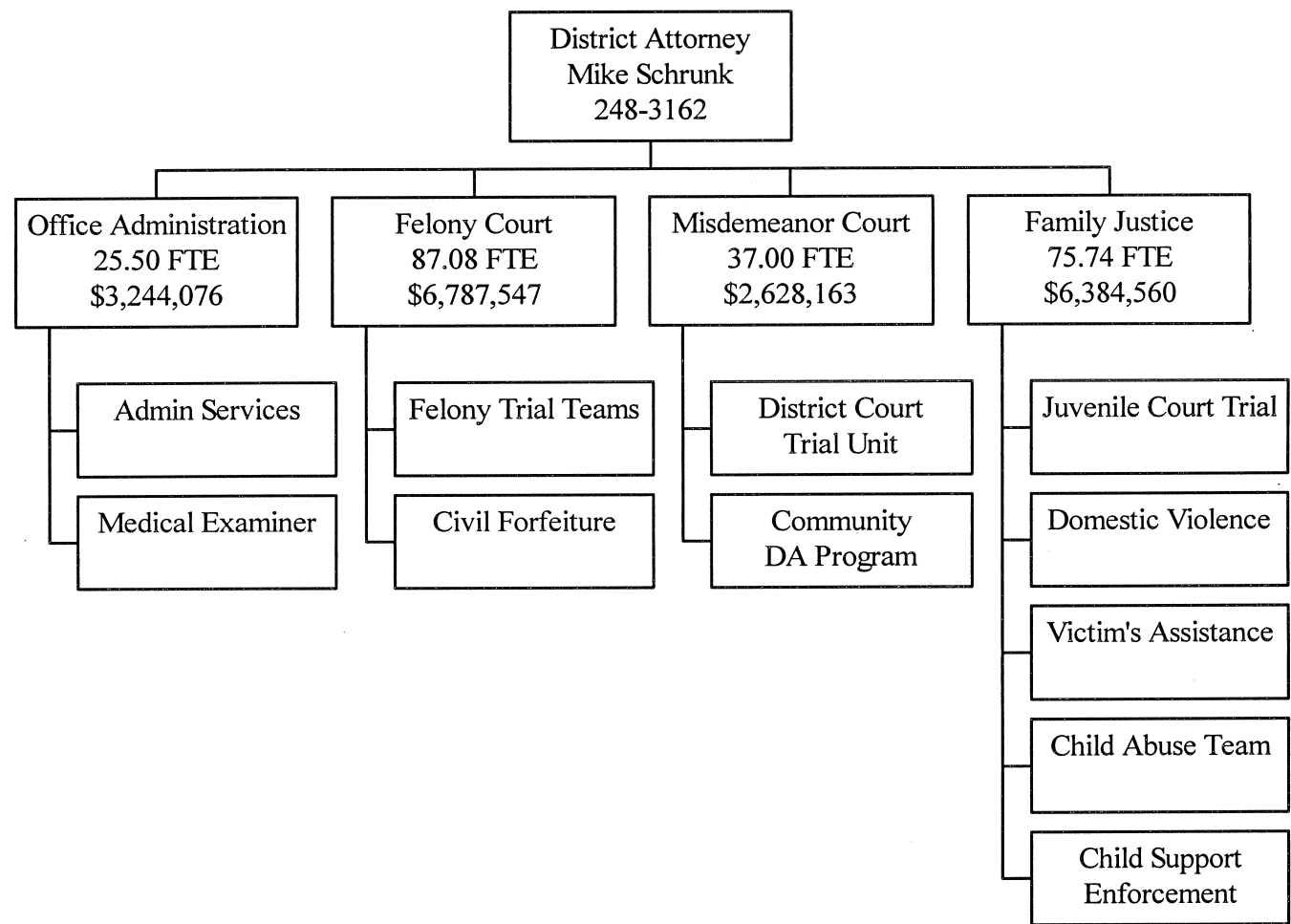
<u>Costs by Division</u>	1997-98	1998-99	1998-99	1999-00	
	1997-98	Current	Adopted	Adopted	
	<u>Actual</u>	<u>Estimate</u>	<u>Budget</u>	<u>Budget</u>	<u>Difference</u>
Administration	\$2,691,929	\$2,909,929	\$3,165,380	\$3,244,076	\$78,696
Felony Court	5,317,569	6,362,182	6,534,363	6,787,547	253,184
Misdemeanor Court	2,319,131	2,357,724	2,493,506	2,628,163	134,657
Family Justice	<u>4,783,041</u>	<u>5,633,851</u>	<u>5,354,097</u>	<u>6,384,560</u>	<u>1,030,463</u>
Total Costs	\$15,111,670	\$17,263,686	\$17,547,346	\$19,044,346	\$1,497,000

<u>Staffing by Division</u>	1997-98	1998-99	1998-99	1999-00	
	1997-98	Current	Adopted	Adopted	
	<u>Actual</u>	<u>Estimate</u>	<u>Budget</u>	<u>Budget</u>	<u>Difference</u>
Administration	21.92	24.50	25.50	25.50	0.00
Felony Court	76.90	85.00	86.98	87.08	0.10
Misdemeanor Court	37.40	38.00	38.16	37.00	(1.16)
Family Justice	<u>62.66</u>	<u>68.00</u>	<u>68.50</u>	<u>75.74</u>	<u>7.24</u>
Total Staffing FTE's	198.88	215.50	219.14	225.32	6.18

District Attorney

Department Organization

The District Attorney's Office delivers its services through four divisions and 11 programs. An organization chart is shown below:



Office Administration

The Office of the District Attorney provides leadership, coordination, and direction for all of the office's divisions, other law enforcement agencies and private organizations. The division includes Administrative Services and the Medical Examiner's Office.

Action Plans:

- Installation, training and operation of new case management system for Juvenile Units, September 1999.
- Complete Assessment of Unit B and create strategic plans for identified focus areas, July 1999.
- County Courthouse sixth floor space changes, July 1999.

Dept Administration					
<u>Budget Trends</u>					
	1997-98	1998-99	1998-99	1999-00	
	<u>Actual</u>	<u>Current</u>	<u>Adopted</u>	<u>Adopted</u>	<u>Difference</u>
		<u>Estimate</u>	<u>Budget</u>	<u>Budget</u>	
Staffing FTE	21.92	24.50	25.50	25.50	0.00
Personal Services	\$1,343,727	\$1,442,468	\$1,580,920	\$1,538,979	(\$41,941)
Contractual Services	90,332	95,311	95,908	111,708	15,800
Materials & Supplies	1,222,752	1,312,150	1,425,355	1,527,389	102,034
Capital Outlay	35,118	60,000	63,197	66,000	2,803
Total Costs	\$2,691,929	\$2,909,929	\$3,165,380	\$3,244,076	\$78,696

Administrative Services

District Attorney Administrative Services provides office management functions to the entire office. It is responsible for insuring that managerial functions are efficiently and correctly performed within the parameters of office policy, County Administrative Rules, and state and federal requirements. Specifically, those functions involve the following activities:

- Witness travel billings and arrangements.
- Main office reception services.
- Information systems (LAN and case tracking system administration.)
- Labor contract administration, personnel administration.
- Secretarial services to management.
- Accounts payable, purchasing, etc.
- Budget preparation and financial administration.
- Grants administration.

FY 1999: 16.00 FTE FY 2000: 16.00 FTE

Medical Examiner

The mission of the Medical Examiner Office is to determine the cause of death of county residents who die under special circumstances; including accidents, violence, drug involvement, employment and other specified situations. The Office is responsible for establishing the cause and manner of death, notifying the next-of-kin and protecting the property of the deceased person until a personal representative can take charge.

Approximately 3,800 of the County's 7,000 deaths each year fall into categories which must be reported and investigated by the Medical Examiner Office. Local discretion is limited by the mandates and State Medical Examiner supervision authority arising from ORS 146. The District Attorney's Office provides administrative and managerial assistance when necessary.

FY 1999: 9.50 FTE FY 2000: 9.50 FTE

<u>Costs by Program</u>	1997-98	1998-99	1999-00	<u>Difference</u>
	<u>Actual</u>	<u>Adopted Budget</u>	<u>Adopted Budget</u>	
Administrative Services	\$2,043,667	\$2,440,997	\$2,506,018	\$65,021
Liquor Control Fund	7,457	10,662	20,000	9,338
Medical Examiner	<u>640,805</u>	<u>713,721</u>	<u>718,058</u>	<u>4,337</u>
Total Costs	\$2,691,929	\$3,165,380	\$3,244,076	\$78,696

District Attorney

Office Administration

Significant Budget Changes	Program	FTE Changes	Expenditure Changes	Revenue Changes
Tri-Met Passes for employees required by contract with Local 88.	<i>Administrative Services Division</i>		\$26,000	

Key Result Measure	Program	FY 96 Actual	FY 97 Actual	FY 98 Actual	FY 99 Estimate	FY 00 Estimate
Cases handled per Investigator	<i>Medical Examiner</i>			413	401	410

Felony Court Division

The Felony Court Division is divided into three areas:

Felony Trial Units: Felony trial units review, issue and prosecute felony charges involving property offenses, drug and vice cases, burglary and robbery cases, negligent homicides, rape and sexual assault cases, homicides, crimes involving gang members and cases involving the death penalty.

The Felony Court Division prosecutes felony matters in Multnomah County Courts. This entails reviewing, investigating and trying felony cases brought to the District Attorney by local law enforcement agencies and the public.

Civil Forfeiture: Conducts all administrative and judicial processing of seizure and civil forfeiture of property related to the violation of state drug laws.

Investigations: Grant funded financial investigations through the Regional Organized Crime and Narcotics Task Force have been the focus of this area.

Action Plans:

- Monitor and Adjust to Property Crime Legislation.
- Monitor and Adjust to Measure 11 Legislative Changes.
- Continue to fairly assess Measure 11 charges.

Felony Court Budget Trends

	1997-98 Actual	1998-99 Current Estimate	1998-99 Adopted Budget	1999-00 Adopted Budget	Difference
Staffing FTE	76.90	85.00	86.98	87.08	0.10
Personal Services	\$4,795,650	\$5,523,512	\$5,551,006	\$5,759,243	\$208,237
Contractual Services	144,845	516,074	620,007	641,960	21,953
Materials & Supplies	340,917	322,596	363,350	369,044	5,694
Capital Outlay	<u>36,157</u>	<u>0</u>	<u>0</u>	<u>17,300</u>	<u>17,300</u>
Total Costs	\$5,317,569	\$6,362,182	\$6,534,363	\$6,787,547	\$253,184

Felony Trial Teams

The Circuit Court Felony Trial Teams review, file and prosecute felony criminal cases. Trial teams are composed of deputy district attorneys, paralegals and support personnel who specialize in pretrial matters (Pretrial Unit), property crimes (Unit A), drug and vice (Unit B), burglary, robbery, negligent homicide (Unit C), and rape, sexual assaults, other person crimes (Unit D), criminal cases involving gang members (Gang Unit). Each of the trial teams insures that police arrests, citations and public complaints involving criminal activity are reviewed, filed and prosecuted. Homicide cases are distributed throughout the trial teams.

The District Attorney's Office receives Local Law Enforcement Block Grant funds to improve staffing levels to combat drug use and to focus on quality of life crimes in the outer Southeast area of Portland. The funds pay for a Deputy District Attorney in the drug unit, a Neighborhood DA, and a legal assistant to focus on holds placed on inmates from other jurisdictions.

FY 1999: 80.23 FTE FY 2000: 80.33 FTE

Civil Forfeiture Unit

The Civil Forfeiture Unit is responsible for processing seized and forfeited property related to the violation of state drug laws. This unit conducts both:

- Administrative (default) forfeitures.
- Judicial (contested) forfeitures.

The District Attorney's staff reviews all cases referred from police agencies and carries through on the civil process required to obtain forfeitures.

Regulation of forfeiture activity is found in Oregon Laws, Chapter 791 and Multnomah County Ordinance #633. It is also subject to oversight by the State Forfeiture Oversight Commission.

FY 1999: 6.75 FTE FY 2000: 6.75 FTE

<u>Costs by Program</u>	1997-98	1998-99	1999-00	
	<u>Actual</u>	<u>Adopted Budget</u>	<u>Adopted Budget</u>	<u>Difference</u>
Felony Trial Teams	\$4,763,542	\$5,469,539	\$5,813,731	\$344,192
Civil Forfeiture	353,675	920,953	973,816	52,863
Investigations	200,352	143,871	0	(143,871)
Total Costs	\$5,317,569	\$6,534,363	\$6,787,547	\$253,184

District Attorney

Felony Court Division

Significant Budget Changes	Program	FTE Changes	Expenditure Changes	Revenue Changes
Additional DDA 3 – White Collar Crime.	<i>Felony Trial Teams</i>	1.00	\$83,361	

Key Result Measures	Program	FY 96 Actual	FY 97 Actual	FY 98 Actual	FY 99 Estimate	FY 00 Estimate
Gross Conviction Rate (Guilty Pleas or Trial/Total Cases)						
Overall	<i>Felony Trial Teams</i>	98.8%	98.5%	99.1%	99.5%	98.9%
Property Crimes		99.3%	99.1%	99.0%	99.0%	99.1%
Drug Crimes		99.2%	98.9%	99.5%	99.7%	99.3%
Career Criminals		97.6%	96.7%	99.0%	99.4%	98.0%
Person Crimes		95.3%	96.0%	96.3%	96.4%	96.2%
Gangs		98.6%	98.4%	99.1%	99.0%	98.6%
Cases Reviewed	<i>Felony Trial Teams</i>		10,900	13,503	12,500	12,500
Cases Per Deputy			349	436		382
Percent of Cases Issued			77.3%	76.4%		75.5%
% of Seizures forfeited to State	<i>Civil Forfeiture</i>	75.7%	67%	71%	75%	72%
# of forfeitures	<i>Civil Forfeiture</i>	655	914	978	850	775

Misdemeanor Court Division

The Misdemeanor Court Division prosecutes criminal misdemeanor charges and city ordinance violations cases in the Multnomah County Courts. This division takes cases that have been issued and are contested to trial for final disposition.

Additionally the Misdemeanor Court Division houses Community Prosecution Programs. These include the Neighborhood District Attorney Program and the Multnomah County Community Court.

Action Plans:

- Expand the Multnomah County Community Court into other areas of the County.
- Monitor and Implement DUII Legislative Changes.
- Adjust Office Policy and Implement changes dealing with Failure to Appear on DUII Charges.
- Place a Full Time DDA in Gresham.

Misdemeanor Court Budget Trends					
	1997-98 Actual	1998-99 Current Estimate	1998-99 Adopted Budget	1999-00 Adopted Budget	Difference
Staffing FTE	37.40	38.00	38.16	37.00	(1.16)
Personal Services	\$2,110,983	\$2,058,856	\$2,239,340	\$2,333,912	\$94,572
Contractual Services	57,704	120,871	75,453	128,494	53,041
Materials & Supplies	149,882	177,997	178,713	165,757	(12,956)
Capital Outlay	562	0	0	0	0
Total Costs	\$2,319,131	\$2,357,724	\$2,493,506	\$2,628,163	\$134,657

Misdemeanor Trial Unit

The Misdemeanor Trial Unit is responsible for the review of cases and prosecution of offenders who have been arrested by the local law enforcement agencies on misdemeanor charges and city ordinance violations. Cases that are prosecuted in Misdemeanor Court involve such charges as:

- Prostitution.
- Misdemeanor thefts.
- Misdemeanor assaults.
- Animal Control cases.
- Driving Under the Influence of Intoxicants.
- Hit and Run and other major traffic crimes.

The unit provides the following to law enforcement agencies and the public:

- Reviewing police reports to determine appropriateness for issuance.
- Meeting with the victims of misdemeanor crimes.
- Appearing in court for arraignments, pretrial motions, and trials.

FY 1999: 28.00 FTE FY 2000: 27.00 FTE

Community DA Programs

The purpose of this program is to work with community groups to solve local crime problems. Results have shown that by moving the justice system out of the courthouse and into the community the system can focus action on reducing/eliminating the crime problems in the targeted area. The current programs are:

Neighborhood District Attorney Program

This nationally recognized program places a prosecutor in various sites throughout the County to work with the community groups, business associations and local law enforcement officers to combat quality of life crimes at the source. Currently Neighborhood DA's are located in the following areas.

- Lloyd District
- North/Northeast Portland District
- Central Portland Business District
- Gresham
- Tri Met
- East Side - inner and outer SE Portland

The types of activities that have been utilized include elimination of illegal camping, neighborhood clean ups of public areas and sites where illegal activities (drugs and prostitution) were occurring, coordination between private security and police to reduce car prowls, agreements to pool resources and identify individual responsibilities to maintain long term solutions to crime problems, development of the capacity for telephonic search warrants, and closing of drug houses.

Community Court

The Multnomah County Community Court was started in March, 1998. The project is funded using a combination of Federal and local sources and is a joint project of the District Attorney, Public Defender, Adult Community Justice and Courts. A Federal Weed and Seed grant pays for staffing, programs and evaluation.

FY 1999: 10.16 FTE FY 2000: 10.00 FTE

<u>Costs by Program</u>	1997-98 Actual	1998-99 Adopted Budget	1999-00 Adopted Budget	Difference
District Court Trial Unit	\$1,504,950	\$1,679,137	\$1,840,073	\$160,936
Community DA Programs	814,181	814,369	788,090	(26,279)
Total Costs	\$2,319,131	\$2,493,506	\$2,628,163	\$134,657

Significant Budget Changes	Program	FTE Changes	Expenditure Changes	Revenue Changes
New fees assessed by DMV for access to records.	<i>Misdemeanor Trial</i>		\$10,000	
Payments for judge and defense counsel at Community Court.	<i>Misdemeanor Trial</i>		\$75,000	

Key Result Measures	Program	FY 96 Actual	FY 97 Actual	FY 98 Actual	FY 99 Estimate	FY 00 Estimate
Cases reviewed	<i>Trial Unit</i>	15,604	18,109	18,059	19,000	19,232
Cases Per DDA	<i>Trial Unit</i>		1,297	1,204	NA	1,282
% of cases issued	<i>Trial Unit</i>	79.0%	79.8%	78.4%	77.0%	76.0%
Conviction rate of Misdemeanors	<i>Trial Unit</i>	97.9%	98.4%	98.3%	98.0%	98.1%
Conviction rate of DUII	<i>Trial Unit</i>	96.6%	98.8%	97.9%	98.0%	97.3%
Conviction rate of Traffic cases	<i>Trial Unit</i>	99.0%	99.1%	98.2%	99.0%	98.6%

Family Justice

The Family Justice Division was created to strengthen services for children and families in Multnomah County. Increased reporting of domestic violence and child abuse demanded specialized services for families.

The Family Justice Division is composed of several units including:

Juvenile Section

- Prosecutes juveniles who have committed criminal offenses.
- Intervenes to protect the well being of abused or neglected children.

Domestic Violence Unit

- Screens and aggressively prosecutes all domestic violence cases.

Victims Assistance

- Offers crisis intervention, short term counseling, information and referral.
- Keeps the victims and their families advised of the progress of the case.
- Assists victims through the case disposition.

Child Abuse Team

- Reviews and processes criminal cases involving child abuse.

Child Support Enforcement

- Establishes and enforces child support orders.

Action Plans

- Test and install the new case management and tracking system to be used by the juvenile delinquency, dependency and termination of parental rights programs.
- Coordinate new property crime restitution program with Department of Community Justice and the State Court.
- Expand Support Enforcement Division and Domestic Violence services to the Gresham Community.
- Monitor and Adjust to Legislation Concerning Children and Domestic Violence.

Family Justice Budget Trends

	1997-98	1998-99	1998-99	1999-00	
	<u>Actual</u>	<u>Current Estimate</u>	<u>Adopted Budget</u>	<u>Adopted Budget</u>	<u>Difference</u>
Staffing FTE	62.66	68.00	68.50	75.74	7.24
Personal Services	\$3,530,187	\$4,134,876	\$3,855,081	\$4,589,564	\$734,483
Contractual Services	573,068	772,478	772,478	749,395	(23,083)
Materials & Supplies	677,143	726,497	726,538	1,043,301	316,763
Capital Outlay	<u>2,643</u>	<u>0</u>	<u>0</u>	<u>2,300</u>	<u>2,300</u>
Total Costs	\$4,783,041	\$5,633,851	\$5,354,097	\$6,384,560	\$1,030,463

**Juvenile Court
Trial Unit**

The Juvenile Court Trial Unit has two primary functions. It prosecutes juveniles who have committed criminal (non-Ballot Measure 11) offenses. Services provided to law enforcement and juvenile court staff include petitioning court for a criminal complaint to be filed, meeting with victims and coordinating efforts with juvenile court counselors. The trial unit also works closely with the State Children's Services Division to intervene on a child's behalf in cases of abuse or neglect.

FY 1999: 19.00 FTE FY 2000: 20.00 FTE

**Domestic
Violence Unit**

The Domestic Violence Unit screens all domestic violence cases and aggressively prosecutes those cases. The unit prosecutes domestic violence cases, monitors a six month deferred prosecution program, provides outreach to under-served populations and provides victims of domestic violence with support services. The deferred prosecution program includes close monitoring by probation officers and a specific treatment plan for the identified source of problems. Support services include specialized services, personal contact by a victim's advocate and an information resource for social services, referral and support.

FY 1999: 10.50 FTE FY 2000: 10.84 FTE

**Victim's
Assistance
Program**

The Victim's Assistance Program provides legal information and support for those who have been victimized in a criminal act. The unit is responsible for insuring that victims of crime are provided a notice of their rights and that there are remedies available to them in terms of compensation and restitution. Victim advocates and support staff provide short term crisis management counseling, court orientation, advocacy representation, information and referral services.

FY 1999: 7.00 FTE FY 2000: 7.90 FTE

**Child Abuse
Team**

The Child Abuse Team, also referred to as the Multi-Disciplinary Team (MDT), reviews and processes criminal cases involving child abuse through the use of an integrated team of prosecutors, child specialists and police investigators. The team jointly reviews and investigates cases referred to it from mandatory reporters and others, coordinates the investigation among team members and decides how to proceed with the case. Agencies represented on the team take responsibility for appropriate action.

FY 1999: 7.00 FTE FY 2000: 7.00 FTE

Child Support Enforcement

Child Support Enforcement helps families who require legal assistance in order to receive child support from a non-custodial parent. The unit uses both administrative and judicial processes to enforce child support court orders for individuals not receiving AFDC assistance. Specific activities of the unit include intake, arrearage calculation, wage assignment, determination of delinquency amounts, out-of-state order enforcement, and processing of contempt proceedings.

FY 1999: 25.00 FTE

FY 2000: 30.00 FTE

Costs by Program	1997-98		1998-99		1999-00
	Adopted		Adopted		Difference
	Actual	Budget	Budget	Budget	
Juvenile Court Trial	\$1,548,939	\$1,449,465	\$1,672,459	\$222,994	
Domestic Violence	528,406	607,069	736,747	129,678	
Victim's Assistance	365,440	421,449	477,231	55,782	
Child Abuse Team	901,315	1,254,124	1,397,687	143,563	
Child Support Enforcement	<u>1,438,941</u>	<u>1,621,990</u>	<u>2,100,436</u>	<u>478,446</u>	
Total Costs	\$4,783,041	\$5,354,097	\$6,384,560	\$1,030,463	

Significant Budget Changes	Program	FTE Changes	Expenditure Changes	Revenue Changes
Fringe Rate Increase.	<i>All</i>		\$256,000	
Indirect Cost Rate Increase (above 6%).	<i>All</i>		\$75,000	
Add'l DDA 3 position to handle mandated caseload increases.	<i>Juvenile Court Trial Unit</i>	1.00	\$89,146	
Continuation of VAWA grant funded position.	<i>Domestic Violence</i>	1.00	\$80,730	\$80,730
SED Lease increase.	<i>Support Enforcement</i>		\$15,000	
Opening of Gresham SED Office.	<i>Support Enforcement</i>	2.00	\$125,000	
SED Caseload Relief	<i>Support Enforcement</i>	3.00	\$218,300	\$146,261

Key Result Measures	Program	FY 96 Actual	FY 97 Actual	FY 98 Actual	FY 99 Estimate	FY 00 Estimate
Delinquency – total referrals	Juvenile Court Trial Unit	3,688	3,830	3,670	3,500	3,700
Delinquency – special case reviews	Juvenile Court Trial Unit		2,964	3,803	3,803	3,900
Dependency – new cases	Juvenile Court Trial Unit		588	646	750	603
Dependency – reopened cases	Juvenile Court Trial Unit		282	243	280	271
Dependency – pretrial conferences	Juvenile Court Trial Unit		1,010	1,193	1,400	1,100
Dependency – JSC review	Juvenile Court Trial Unit		2,304	2,705	2,900	2,950
Termination of Parental Rights - Children Freed for Adoption	Juvenile Court Trial Unit		212	315	NA	400
% felony cases issued	Domestic Violence		54%	45%	NA	50%
% misdemeanor cases issued	Domestic Violence		31%	25%	NA	27%
% Defendants accepted in treatment/diversion programs	Domestic Violence	24%	29%	29%	30%	33%
Days per month worked by rape victim advocates	Victim's Assistance		NA	0.55	NA	0.40
Monthly cases per victim advocate	Victim's Assistance		58	56	NA	45
Amount of child support per non-AFDC caseload	Child Support Enforcement	\$2,486	\$2,501	\$2,542	\$2,565	\$2,723
Child support collected per dollar of administrative expense	Child Support Enforcement	\$14.14	\$14.16	\$14.90	\$15.15	\$14.50
Total support \$'s collected	Child Support Enforcement		\$21.2M	\$23.5M	\$25.4M	\$28.9M

