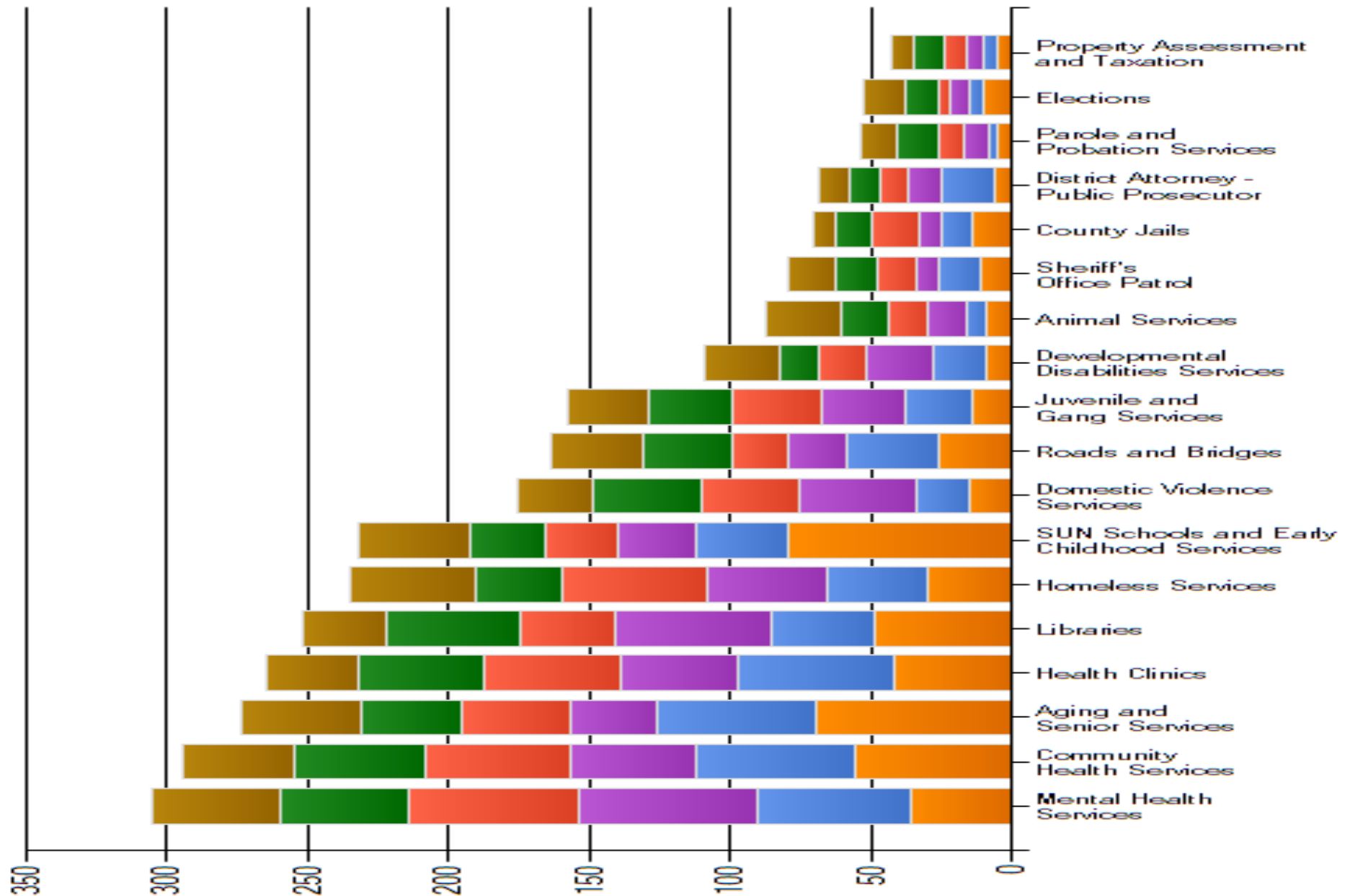


# Survey Ranking Sheet

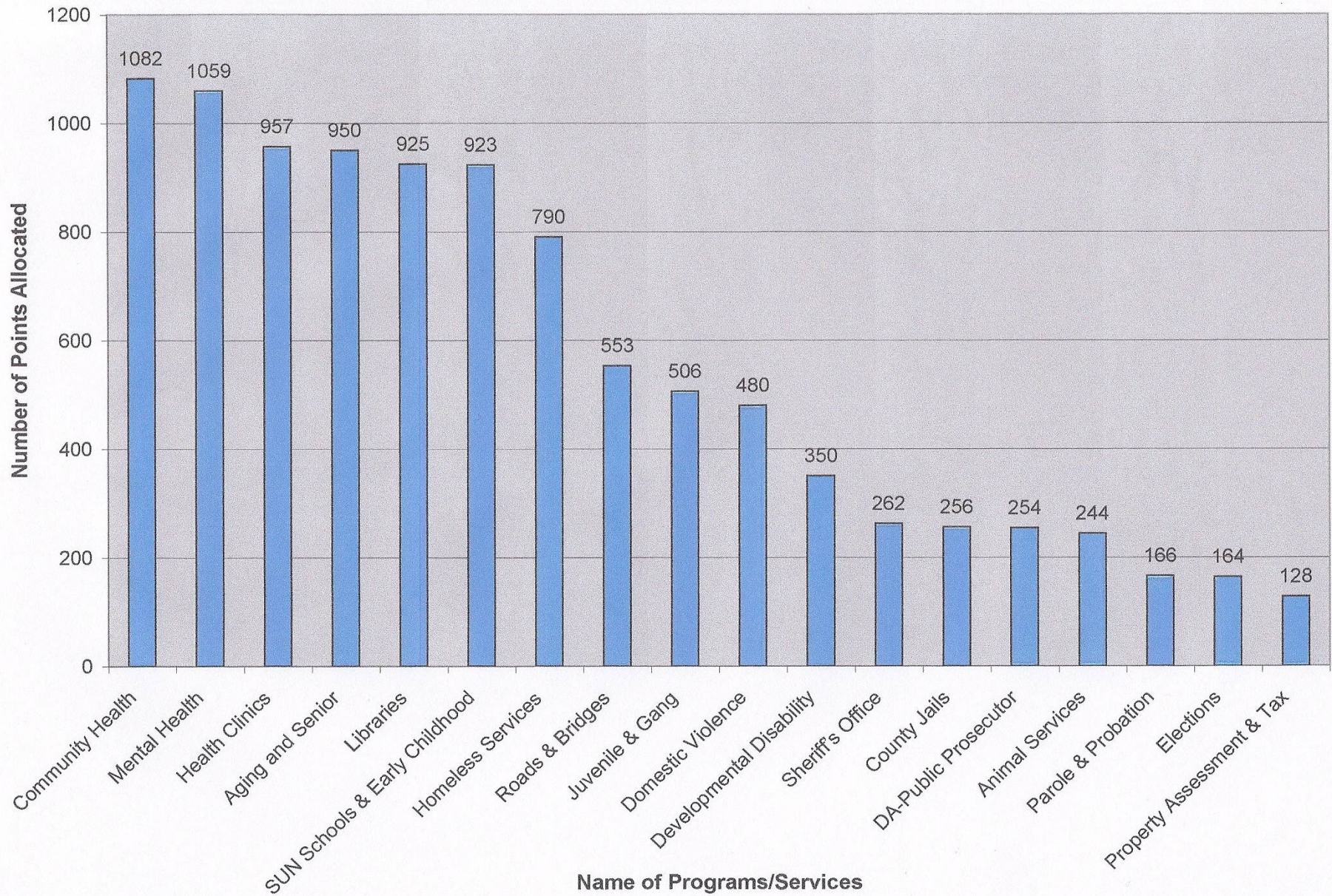
	6	5	4	3	2	1	Response Count
Aging and Senior Services	25.5% (70)	20.4% (56)	11.3% (31)	13.9% (38)	13.1% (36)	15.7% (43)	274
Animal Services	10.2% (9)	8.0% (7)	15.9% (14)	15.9% (14)	19.3% (17)	30.7% (27)	88
Community Health Services	19.0% (56)	19.0% (56)	15.3% (45)	17.3% (51)	16.0% (47)	13.3% (39)	294
County Jails	19.7% (14)	15.5% (11)	11.3% (8)	23.9% (17)	18.3% (13)	11.3% (8)	71
Developmental Disabilities Services	8.3% (9)	17.4% (19)	22.0% (24)	15.6% (17)	12.8% (14)	23.9% (26)	109
District Attorney - Public Prosecutor	8.7% (6)	27.5% (19)	17.4% (12)	14.5% (10)	15.9% (11)	15.9% (11)	69
Domestic Violence Services	8.5% (15)	10.8% (19)	23.9% (42)	19.3% (34)	22.2% (39)	15.3% (27)	176
Elections	18.9% (10)	9.4% (5)	13.2% (7)	7.5% (4)	22.6% (12)	28.3% (15)	53
Health Clinics	15.8% (42)	20.8% (55)	15.8% (42)	18.5% (49)	16.6% (44)	12.5% (33)	265
Homeless Services	12.8% (30)	15.3% (36)	17.9% (42)	22.1% (52)	13.2% (31)	18.7% (44)	235
Juvenile and Gang Services	8.9% (14)	15.2% (24)	19.0% (30)	19.6% (31)	19.0% (30)	18.4% (29)	158
Mental Health Services	11.8% (36)	18.0% (55)	20.7% (63)	19.7% (60)	15.1% (46)	14.8% (45)	305
Libraries	19.4% (49)	14.7% (37)	21.8% (55)	13.5% (34)	18.7% (47)	11.9% (30)	252
Parole and Probation Services	9.3% (5)	5.6% (3)	16.7% (9)	16.7% (9)	27.8% (15)	24.1% (13)	54
Property Assessment and Taxation	11.6% (5)	11.6% (5)	14.0% (6)	18.6% (8)	25.6% (11)	18.6% (8)	43
Roads and Bridges	15.9% (26)	20.1% (33)	12.8% (21)	11.6% (19)	19.5% (32)	20.1% (33)	164
Sheriff's Office Patrol	13.8% (11)	18.8% (15)	10.0% (8)	17.5% (14)	18.8% (15)	21.3% (17)	80
SUN Schools and Early Childhood Services	34.5% (80)	13.8% (32)	12.1% (28)	11.2% (26)	11.6% (27)	16.8% (39)	232
	answered question						487

# How Many Times Particular Services were Ranked Highly by Respondents





## Total Point Value of Selections Allocated by Survey Takers





## Average Point Value of Service when Ranked by a Survey Taker

