

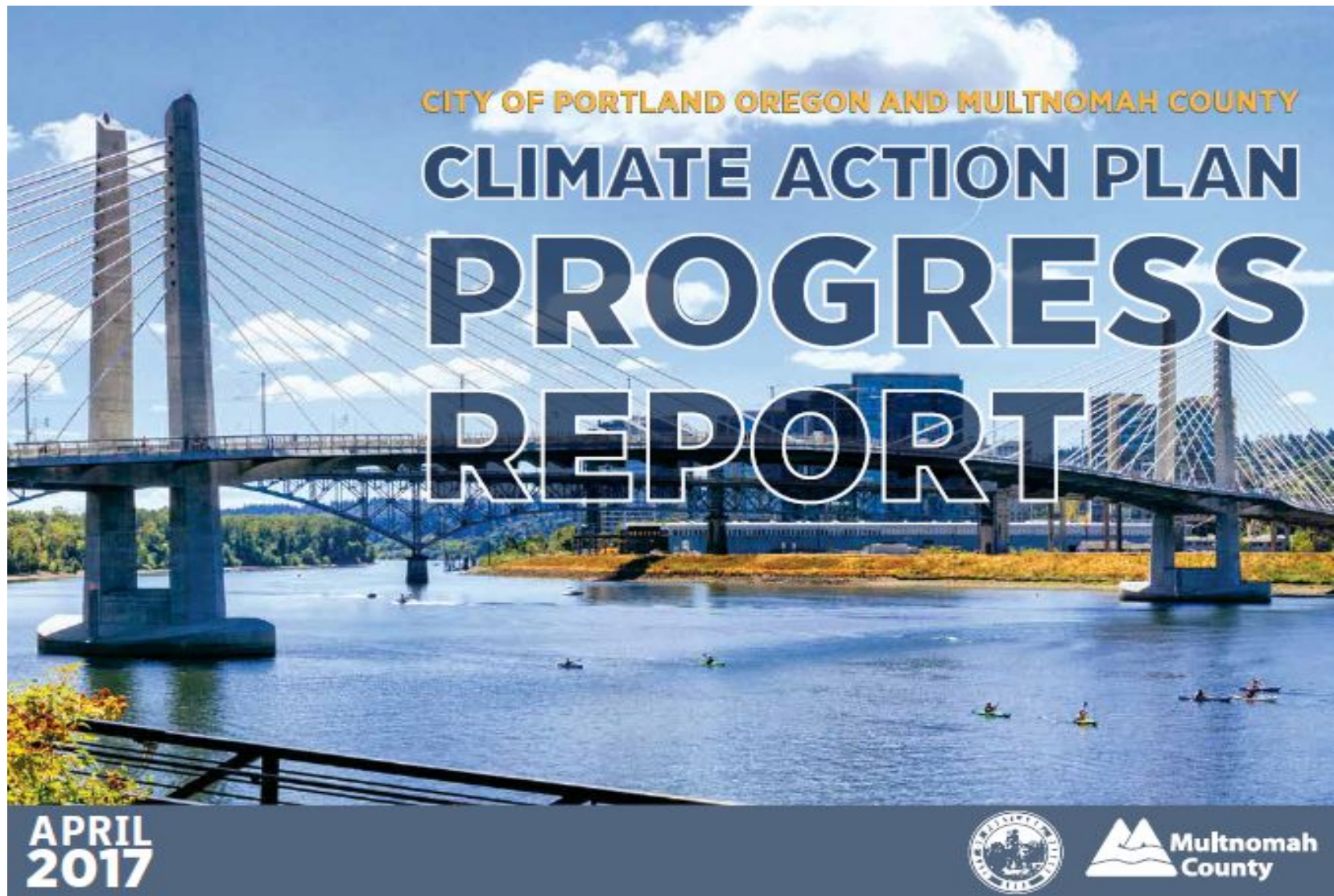
A stylized graphic on the left side of the page. It features two green mountain peaks of different heights. Below the mountains is a green wavy line representing a shoreline or a body of water. At the bottom is a blue wavy line representing water. The entire graphic is composed of solid colors and simple geometric shapes.

Climate Action Plan Progress Report

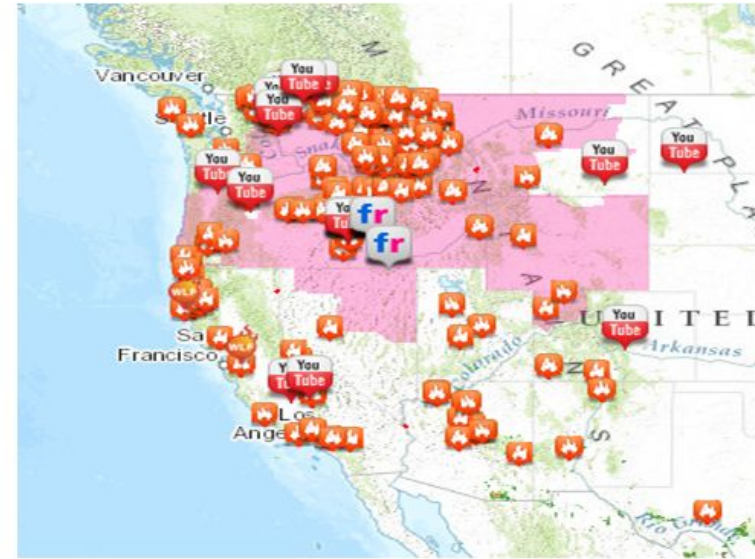
John Wasiutnski, MPA
Office of Sustainability Director

Jae P. Douglas, Ph.D., MSW
Environmental Health Services Director

May 23rd, 2017



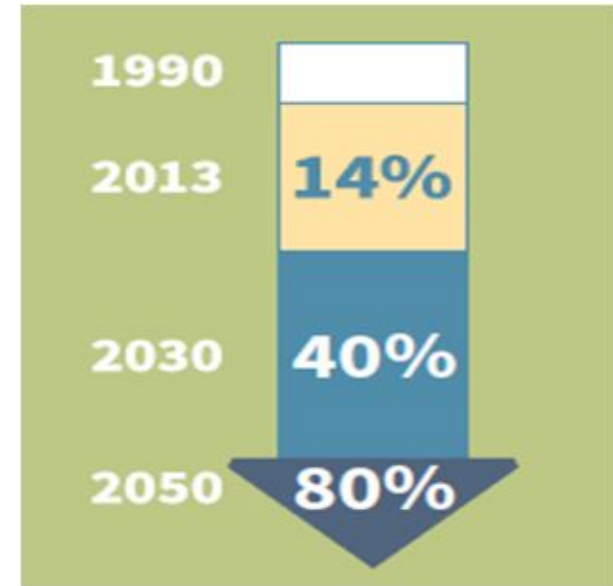
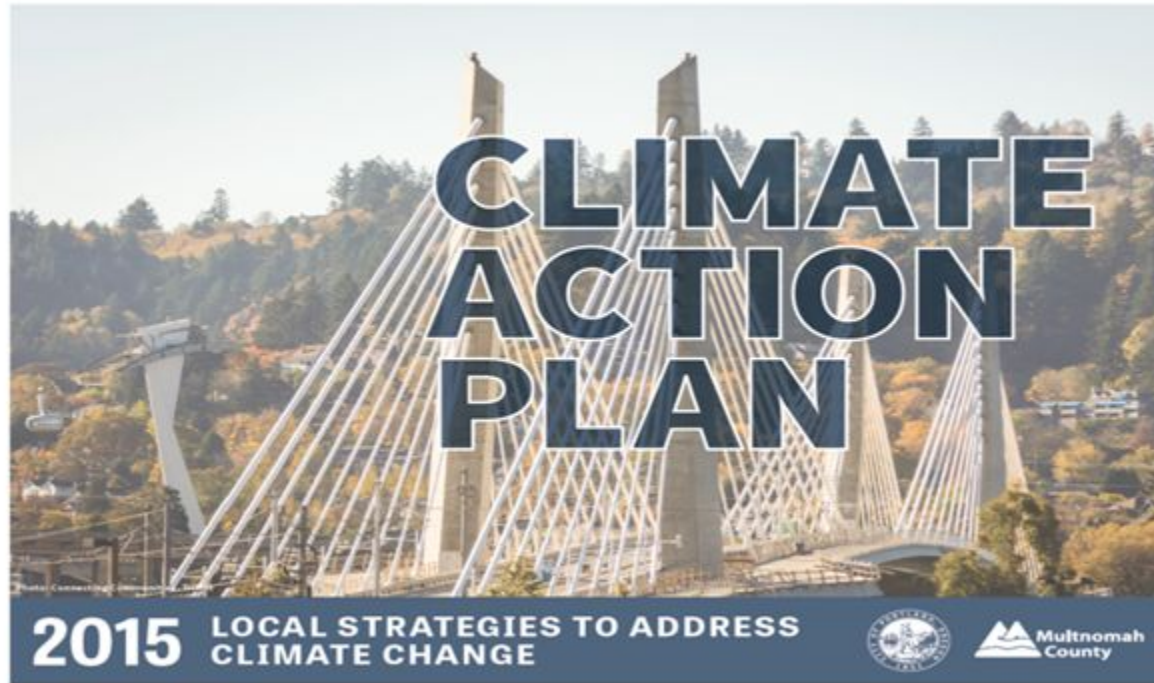
Climate Action Plan // Disturbing trends



Climate Action Plan // Cause for hope?



Climate Action Plan // A multilayer strategy

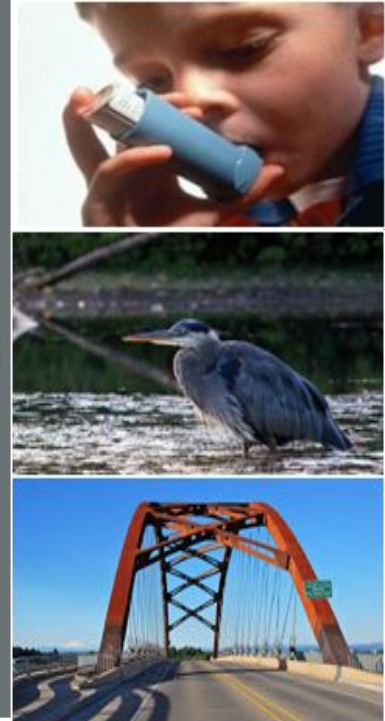
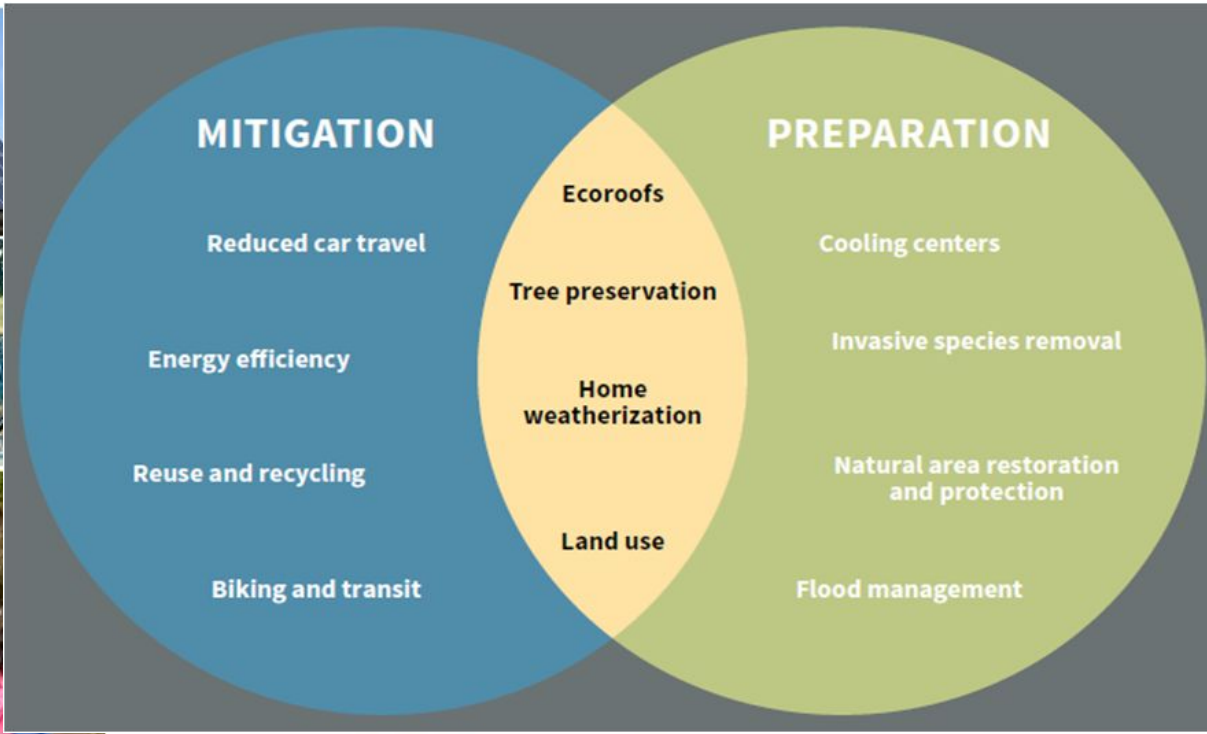


Carbon reduction and climate adaptation plan, but also a focus on:

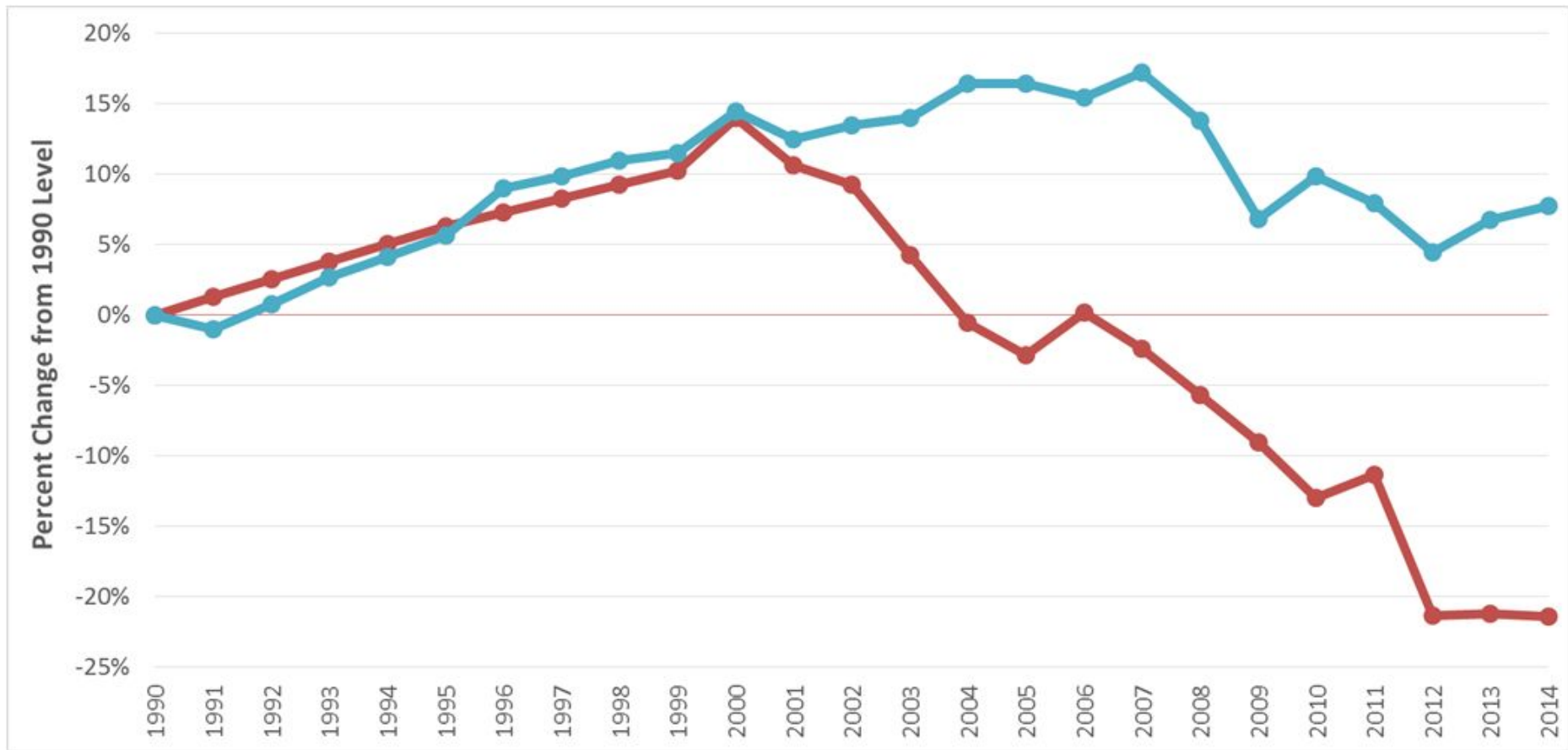
- Public health
- Ecological restoration
- Social equity
- Economic development



Climate Action Plan // A multilayer strategy



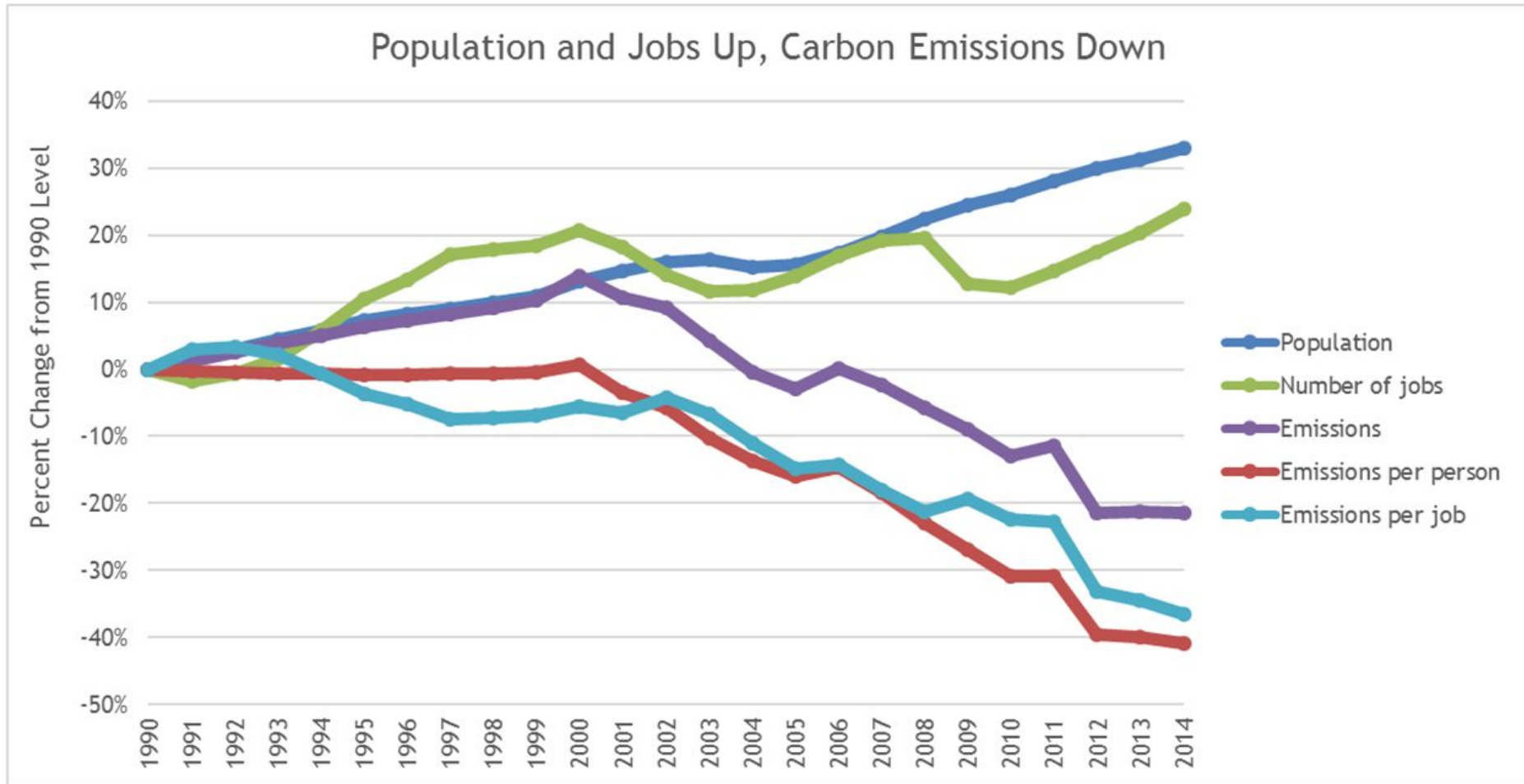
Climate Action Plan // We're on the right path



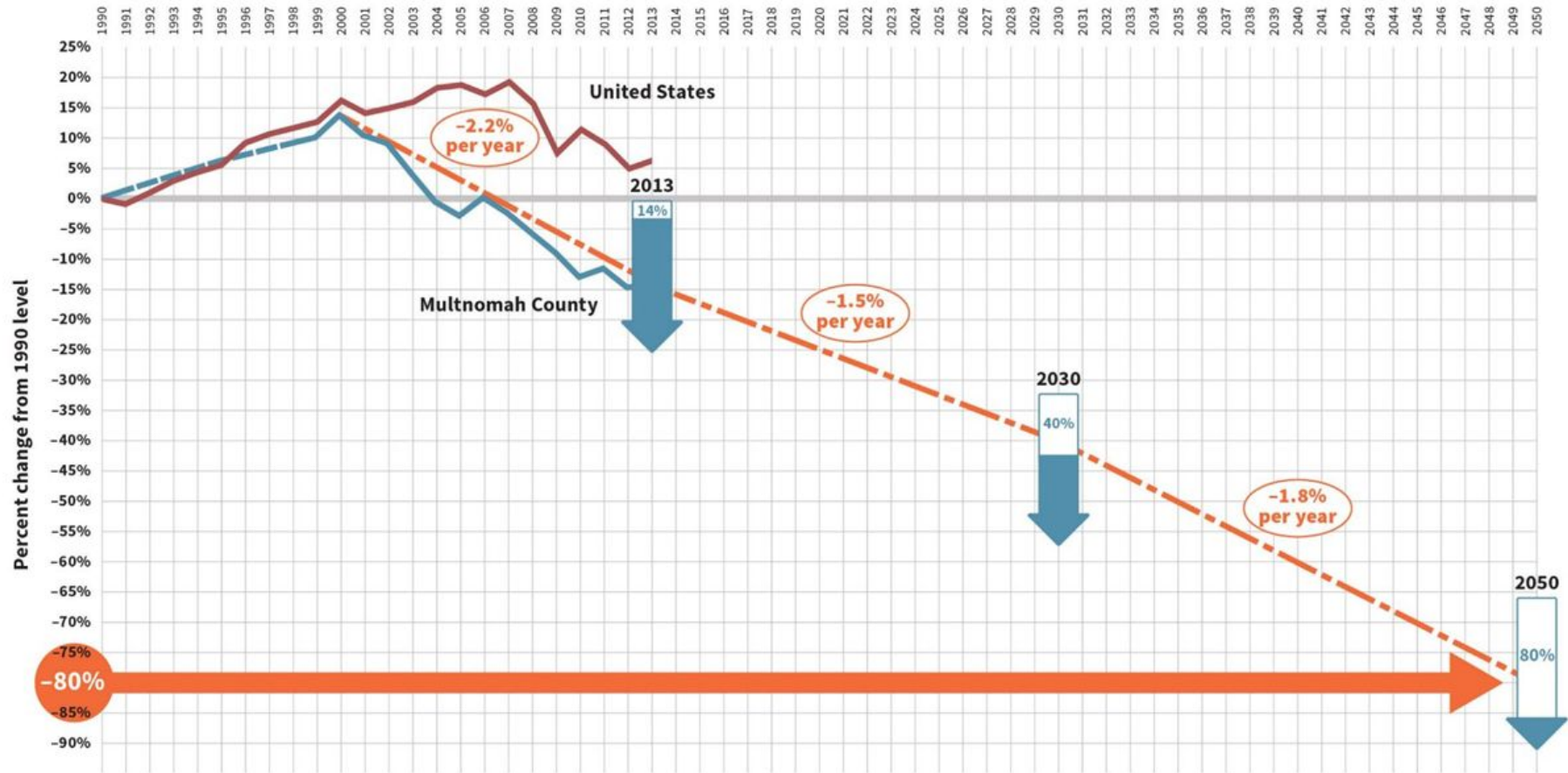
Carbon Emission Trend in Multnomah County

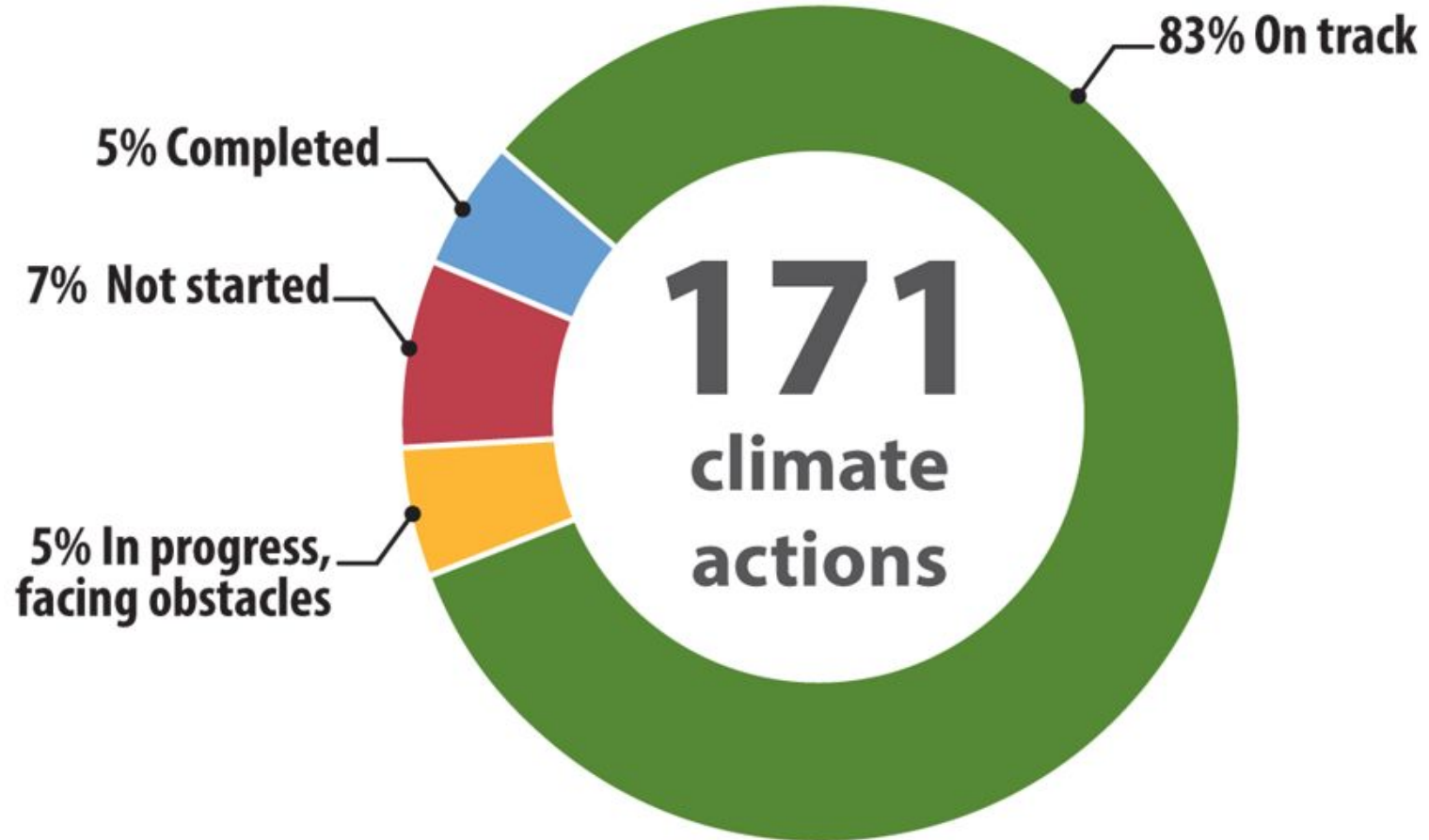


Climate Action Plan // We're on the right path



Climate Action Plan // But we still have work to do





Climate Action Plan // Financing energy efficiency



Climate Action Plan // Healthy, affordable housing



Climate Action Plan // Low carbon economy



Climate Action Plan // Planning for equity and sustainability



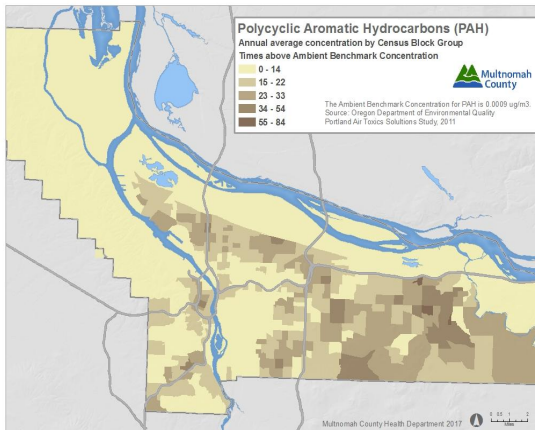
Climate Action Plan // Healthy, just food system



Climate Action Plan // Wood smoke and black carbon



Climate Action Plan // Monitoring and outreach



Oregon's population passes 4 million, new estimates show

By Foster Zerkow | The Oregonian/OregonLive
Email the author | Follow on Twitter
on November 16, 2015 at 6:54 PM, updated November 16, 2015 at 11:02 PM

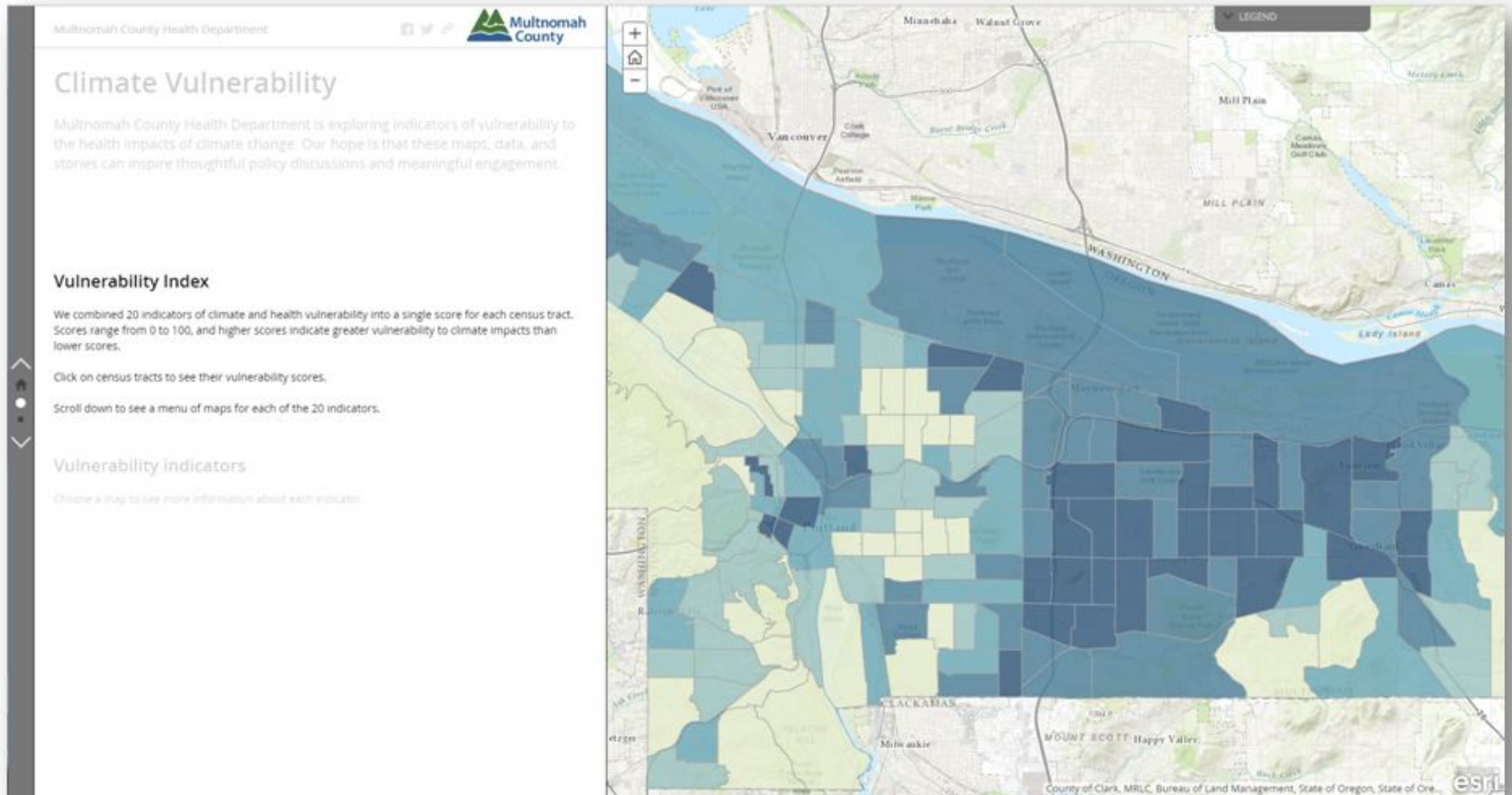
Presses Washington county 1, 2015. A welcome to Oregon sign on highway 150 in Hecla Day town at 22:00am during a long exposure. Bruce Ray/The Oregonian (Bruce Ray)

MOST READ

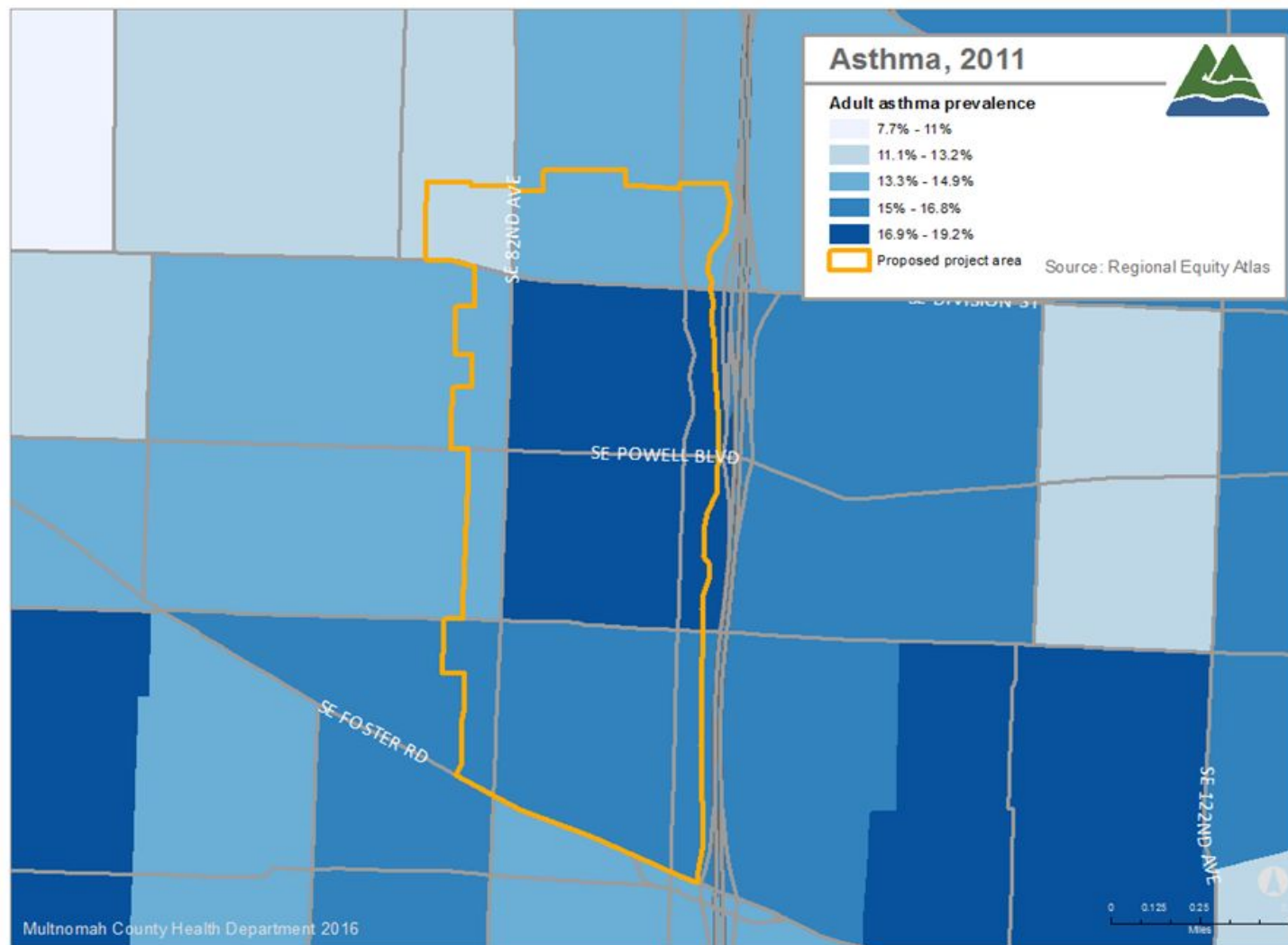
- Driver gets 3.5 years for killing cyclist on St. Johns bridge
- Soundgarden singer Chris Cornell killed himself by hanging, medical examiner says
- Investigators awaiting toxicology results for more clues in Mother's Day killing
- Michael Flynn, while secretly paid by Turkish agent, halted military plan against ISIS
- Portland launches a parking meter app, and it's not Howard



Climate Action Plan // Mapping social vulnerability



Climate Action Plan // Bringing nature into the city



Climate Action Plan // Bringing nature into the city



Climate Action Plan // Community partnerships



Climate Action Plan // Multnomah county courthouse



Climate Action Plan // Sellwood bridge





Climate Action Plan // Challenges remain



Climate Action Plan // Next steps



Contact us at:

john.wasiutynski@multco.us

jae.douglas@multco.us

