

West Forest Park Concept Plan

PLANNING AREAS
WEST FOREST PARK 1478 ACRES
NORTH BETHANY 800 ACRES

- HIGHLY PROTECTED OR PUBLIC OWNERSHIP
- PUBLIC OPEN SPACE / PARK WITH LIMITED CLUSTER DEVELOPMENT
- TITLE 11 - COMPLIANT DEVELOPMENT
- NORTH BETHANY U/L.B. ADDITION (DRAFT CONCEPT PLAN)
- INCORPORATED - OUTSIDE OF FOREST PARK / FOREST HEIGHTS
- EXISTING 100' POWERLINE CORRIDOR
- FOREST PARK LIMITS
- PROPOSED MAJOR THOROUGHFARES
- CITY OF PORTLAND LIMITS
- GREATER BETHANY / REGIONAL / FOREST PARK TRAIL SYSTEM



PORTLAND COMMUNITY COLLEGE

Rock Crest Campus

EXISTING THOROUGHFARES

Area 93

Springville

School

Community Park

Hills

Hills 1

Hills 2

Hills 3

Hills 4

Hills 5

Hills 6

Hills 7

Hills 8

Hills 9

Hills 10

Hills 11

Hills 12

Hills 13

Hills 14

Hills 15

Hills 16

Hills 17

Hills 18

Hills 19

Hills 20

Hills 21

Hills 22

Hills 23

Hills 24

Hills 25

Hills 26

Hills 27

Hills 28

Hills 29

Hills 30

Hills 31

Hills 32

Hills 33

Hills 34

Hills 35

Hills 36

Hills 37

Hills 38

Hills 39

Hills 40

Hills 41

Hills 42

Hills 43

Hills 44

Hills 45

Hills 46

Hills 47

Hills 48

Hills 49

Hills 50

Hills 51

Hills 52

Hills 53

Hills 54

Hills 55

Hills 56

Hills 57

Hills 58

Hills 59

Hills 60

Hills 61

Hills 62

Hills 63

Hills 64

Hills 65

Hills 66

Hills 67

Hills 68

Hills 69

Hills 70

Hills 71

Hills 72

Hills 73

Hills 74

Hills 75

Hills 76

Hills 77

Hills 78

Hills 79

Hills 80

Hills 81

Hills 82

Hills 83

Hills 84

Hills 85

Hills 86

Hills 87

Hills 88

Hills 89

Hills 90

Hills 91

Hills 92

Hills 93

Hills 94

Hills 95

Hills 96

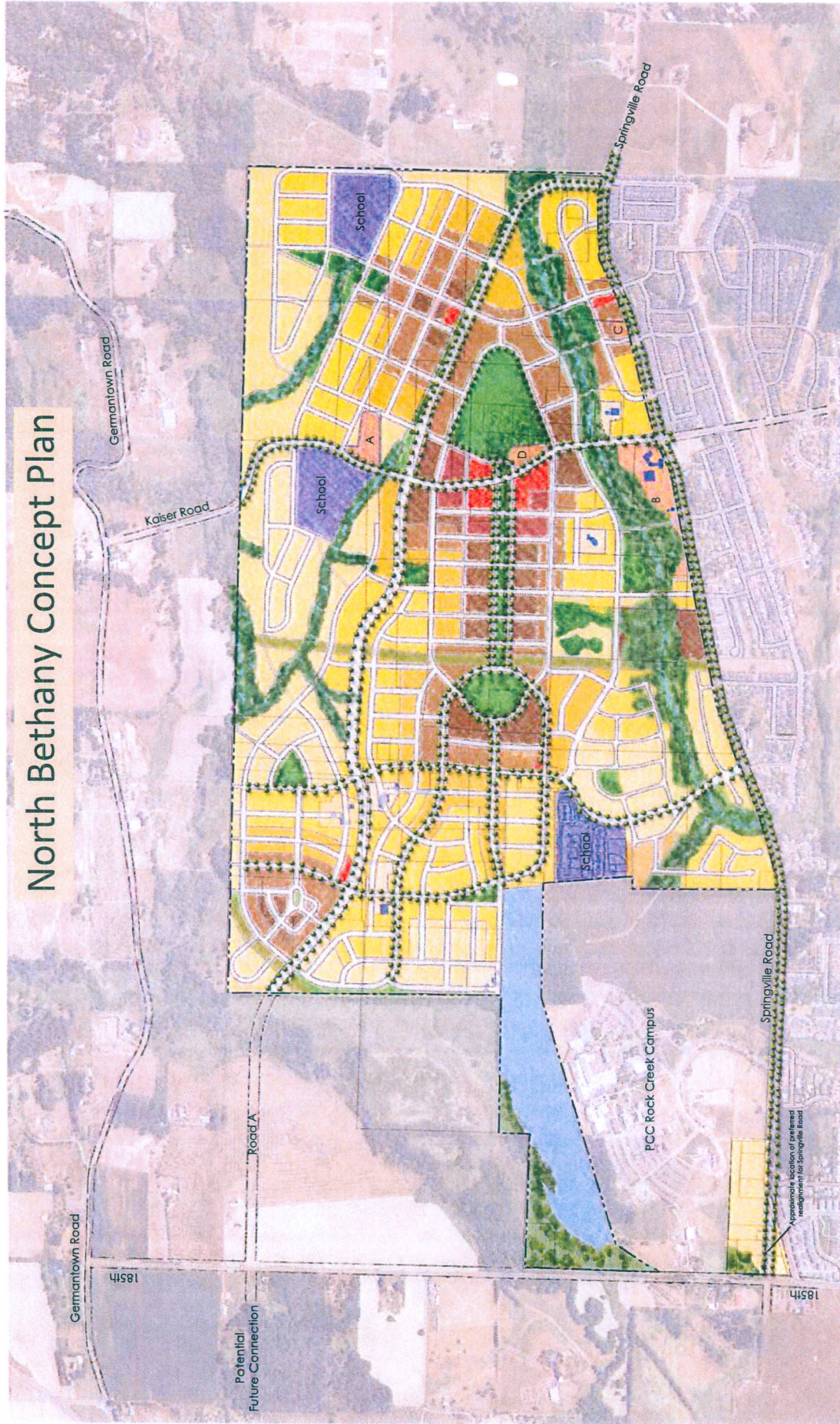
Hills 97

Hills 98

Hills 99

Hills 100

North Bethany Concept Plan



Bethany

a community of distinction
25 March 2009

Illustrative Concept Plan

Land Use Designations

- High Density Residential (R-304)
- High Density Residential (R-301)
- Medium Density Residential (R-18)
- Low Density Residential L2 (R-12)
- Low Density Residential L2 (R-7-9)
- Low Density Residential L1 (R-5-6)

Community Services

- Medical Office Center
- Cemetery
- Church

Parks

- Open Space
- Power Line Corridor

Public Services

- Public Schools
- Fire Station
- CMC Site

Institutional

- Institutional

Notes

- 1. This map is preliminary. All designations are subject to change.



WATER AND SEWER SERVICE PROVISION

