



November 9, 2022

Deandre Kenyanjui
Consumer Engagement Coordinator

Christa Jones, MFP, Psy.D.
CMHP Senior Manager

Overview

- Stakeholder Engagement
- Ongoing Engagement
- Program Highlights
- Onsite Support Services
- Practices and Accountability
- Making a Difference



333 SW Park Ave., Portland
(corner of Oak St. and Park Ave.)





Peer Stakeholder & Community Engagement

- 18 Peer Stakeholder sessions with over 50 participants.
- Consumer surveys
- Shelter and Day Center tours
- Additional engagement:
 - Community Treatment Providers
 - First Responders
 - Culturally Specific Providers
 - Business and neighbors





Ongoing Engagement

- Peer Outreach team is sharing information with the community about BHRC, it's service model, and referral pathways
- Advisory Council
- Public safety agencies
- Partnership with Safety Partners



Program Highlights

The Day Center

- Open from 7:00 am to 10:00 pm - 365 days a year
- Staffed by peers with lived experience

Shelter

- Open - 24/7/365, 33 beds, mixed gender shelter, average 30 day stay
- Staffed by professionals with lived experience and supported by clinical staff

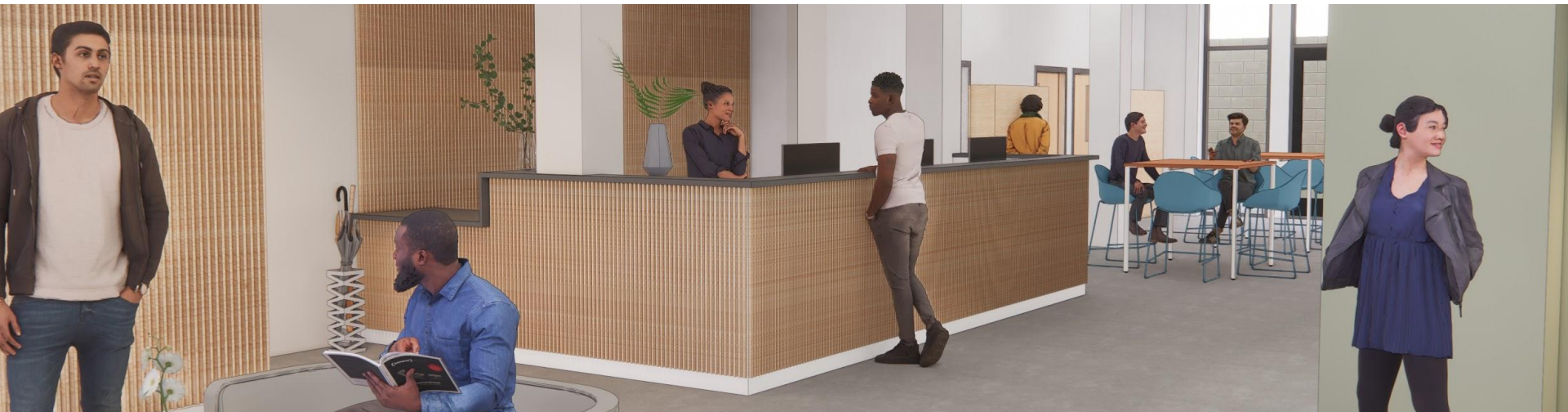
Bridge Housing

- All days / 24 hours
- 19 beds, mixed gender housing, average 90 day stay
- Staffed by professionals with lived experience and supported by clinical staff



Onsite Support Services

- Peer delivered services
- Basic wound care
- Hygiene services: Shower, laundry, restrooms
- Connection and linkage to community resources
- Engagement with co-located on site providers
- Support groups
- Skill and community building activities
- Meal delivery services (shelter and bridge only)
- Computers and charging stations
- Pets welcome!



Practices and Accountability

- Provides a break from judgement, unsolicited opinions, or having to behave in a certain way
- Unarmed Safety Partners trained to rely on trauma- and equity-informed de-escalation techniques and strategies
- Safety partners collaborate with providers and the community to ensure participants and staff are safer and feel supported
- Response Guide for all providers
- Secure lockers allows participants to leave weapons, alcohol and smoking materials outside of the facility
- BHRC expectations for all:
 - Be Safer
 - Be Respectful
 - Be Considerate



Making A Difference

- Integrated programming
- Trauma and equity informed design
- Creating safer spaces
- Supporting system navigation
- Providing comprehensive services
- Model innovation



A stylized graphic on the left side of the slide. It features two dark green mountain peaks with rounded tops. Below the mountains is a dark green wavy band representing a forest or a body of land. At the bottom is a blue wavy band representing water. The entire graphic is composed of solid-colored shapes with no outlines.

**We welcome
your questions.**

BHRC-Info@multco.us