



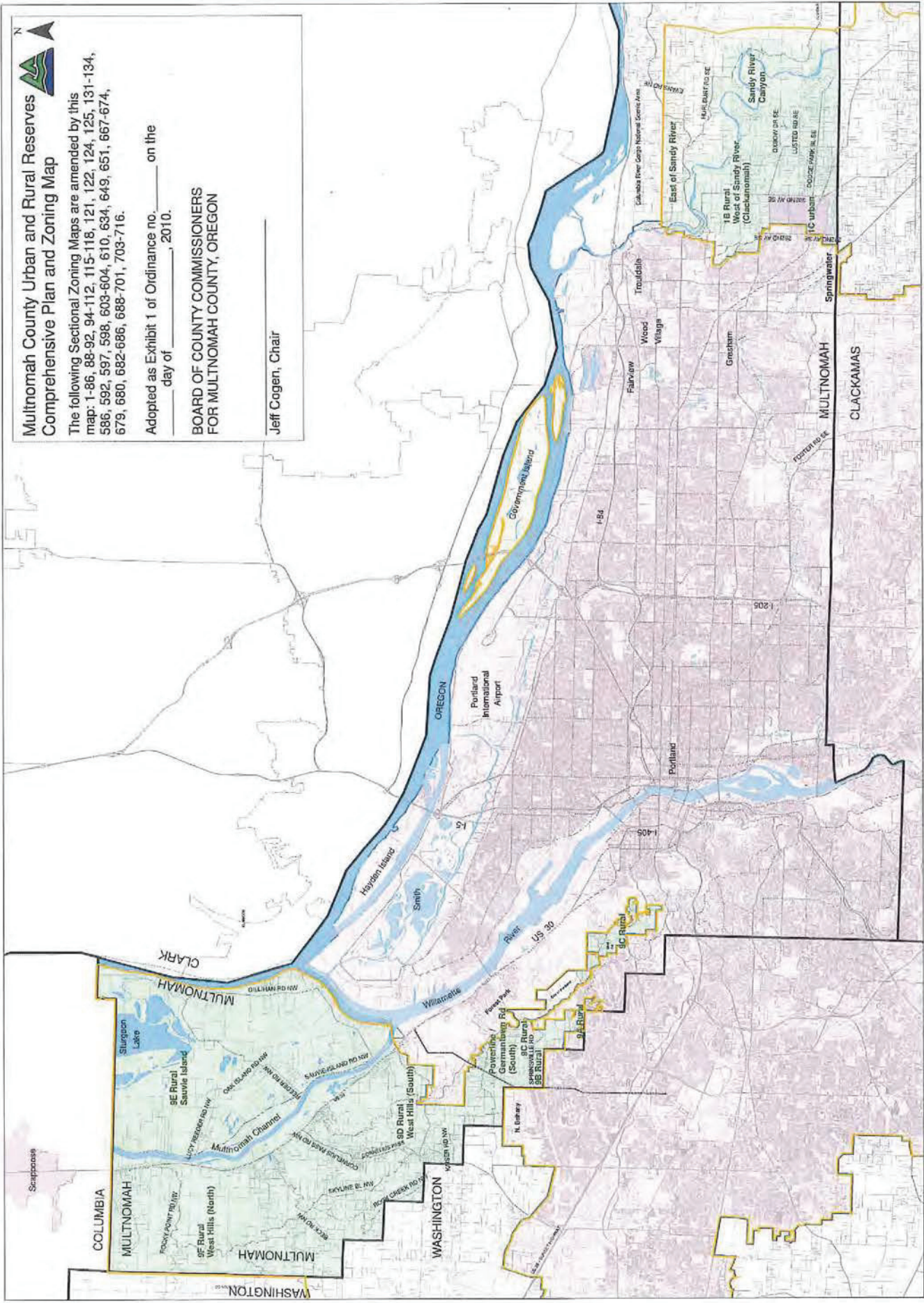
Multnomah County Urban and Rural Reserves Comprehensive Plan and Zoning Map

The following Sectional Zoning Maps are amended by this map: 1-86, 88-92, 94-112, 115-118, 121, 122, 124, 125, 131-134, 586, 592, 597, 598, 603-604, 610, 634, 649, 651, 667-674, 679, 680, 682-686, 688-701, 703-716.

Adopted as Exhibit 1 of Ordinance no. ____ on the ____ day of ____, 2010.

BOARD OF COUNTY COMMISSIONERS
FOR MULTNOMAH COUNTY, OREGON

Jeff Cogen, Chair



- Rural Reserve
- Undesignated
- Existing Urban Areas
- Urban Reserve
- Study Area Boundary