



Johnson Creek
Watershed Council

Year-in-review

September 15, 2016



Action Plan, Programmatic Steering Wheel

10 Years: 2015 -2025

6 program areas:

- People
- Fish
- Riparian Forests
- Water Quality
- Wildlife
- Watershed Science



2025 VISION
THIS ACTION PLAN continues the good work of thousands of people over the past twenty years¹ and synthesizes the best available information for people, fish and wildlife, and natural conditions in the Johnson Creek Watershed. With continued support from our partners^{2,3}, this plan will guide the Johnson Creek Watershed Council for the next ten years.



PEOPLE
Johnson Creek becomes a regional icon for how people, fish, and wildlife can thrive together.



FISH
Native fish species thrive and anadromous salmon and trout return in greater numbers each year.



RIPARIAN FORESTS
Johnson Creek and tributaries are green corridors of cool streams with connected tree canopy that extend to several forested upland areas.



WATER QUALITY
Pollution is addressed, the creek is cleaner, and it's safer for children to swim and wade in Johnson Creek.



WILDLIFE
Healthy natural areas are protected, and habitat is enhanced through restoration projects.



WATERSHED SCIENCE
Collaborative watershed science informs our actions to improve watershed conditions.

¹ Johnson Creek State of the Watershed (JCWC, 2012); Johnson Creek Acquisition Plan, Investing in a Natural Area Network (Johnson Creek Partnership, 2011); Johnson Creek Watershed Characterization (Portland BES, 2005); Johnson Creek Watershed Action Plan, An Adaptive Approach (JCWC, 2002); Johnson Creek Restoration Plan (Portland BES, 2001); Salmon Restoration in an Urban Watershed: Johnson Creek, Oregon (Portland Multnomah Progress Board, 2000); Johnson Creek Resources Management Plan (JCWC, 1991). ² The Johnson Creek Inter-jurisdictional Committee (JCIC) provided technical assistance in the development of this report. The JCIC includes representatives from the City of Portland, City of Gresham, City of Milwaukie, Multnomah County, Clackamas County, Metro, East Multnomah Soil and Water Conservation District, Clackamas County Soil and Water Conservation District, Oregon Department of Environmental Quality, Oregon Department of Agriculture, U.S. Geological Survey, and the Johnson Creek Watershed Council. ³ The development of this plan was funded by the Meyer Memorial Trust and Clackamas BES.

People

- New record for volunteer-days: 1,425
- 7,300 volunteer hours
- Service learning with 20 youth groups
- NCCC Americorps Crew
- 19 high school & college interns



North Fork Johnson Creek Culvert Projects

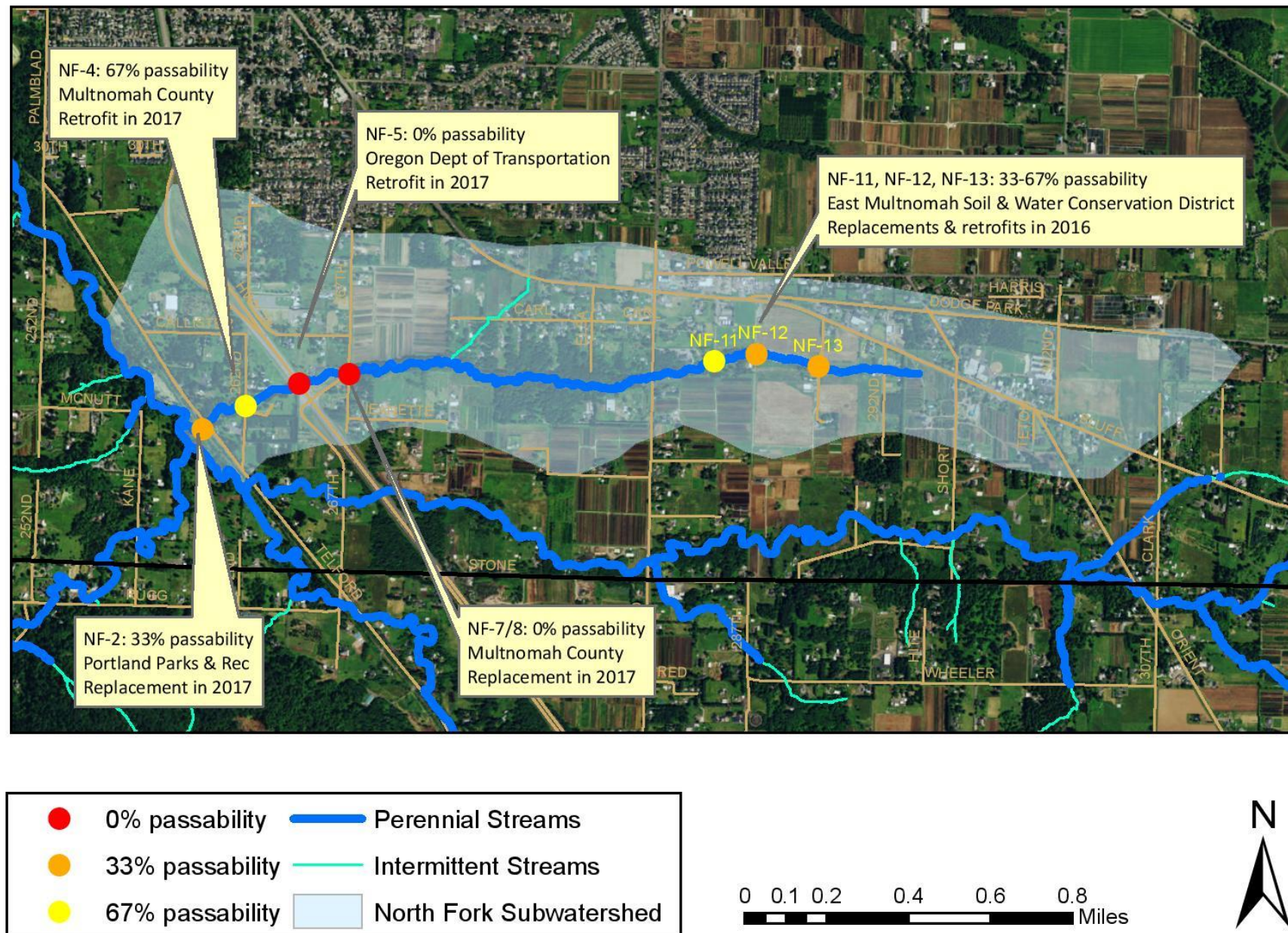
7 culverts
25 months,
5 organizations,
\$800,000

Project Partners:

- * Multnomah County
- * JCWC
- * ODOT
- * EMSWCD
- * Portland Parks & Rec

Additional Funding:

- * NFWF
- * Metro



Riparian Forests (cooler streams)

- 15,000+ trees & shrubs planted
- 11 new properties planted,
47 total properties managed
- New Springwater Trail planting
partnership
- Many public properties planted



2014



2016



New focus on in-line ponds

In-line ponds heat streams
Many are fish passage barriers

Project in design phase:

*1 acre pond

*Landowner: Centennial School
Dist.



Water Quality

- 9th annual stream cleanup: 130 volunteers; 5.1 Tons of trash – new record!
- Inter-agency temperature monitoring program
- Funding for new stormwater management demonstration projects
- Outreach for downspout disconnections in Gresham

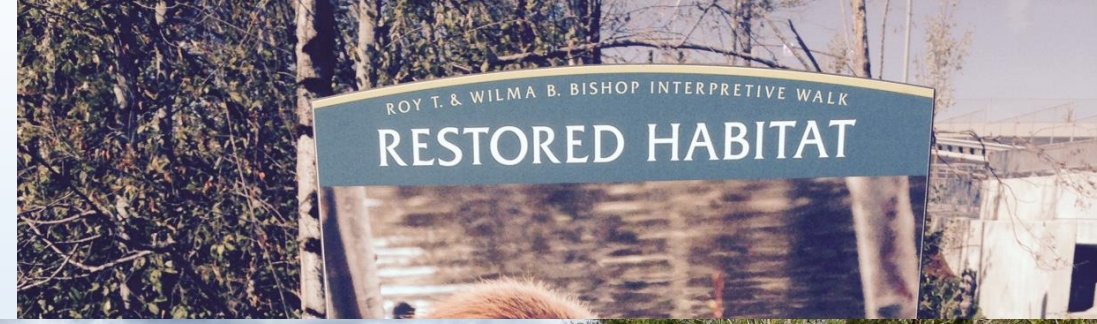


Wildlife Monitoring: Community Science

- Year 5 of coho spawning surveys
- New EcoBlitz at Powell Butte
- New beaver, dragonfly, and lamprey/steelhead surveys



New interpretive boardwalk at the Tacoma St station



Watershed Science

- Inter-Jurisdictional Committee:
 - Monthly Information Sharing
 - Annual Macroinvertebrate Monitoring
- Science Talks “Think & Drink”
- Academic Collaborations: Reed College, PSU, PCC, MHCC
- Conservation Registry
- Website as Information Hub