



Multnomah County Health Department

**Built Environment Atlas:
Exploring Connections Between
Health and Place**

BUILT ENVIRONMENT ATLAS: Active Living, Healthy Eating

Elizabeth Clapp & Moriah McSharry McGrath
Research Analysts

Health Assessment & Evaluation
Office of Health & Social Justice





Essential Public Health Services



Monitor health status to identify and solve community health problems

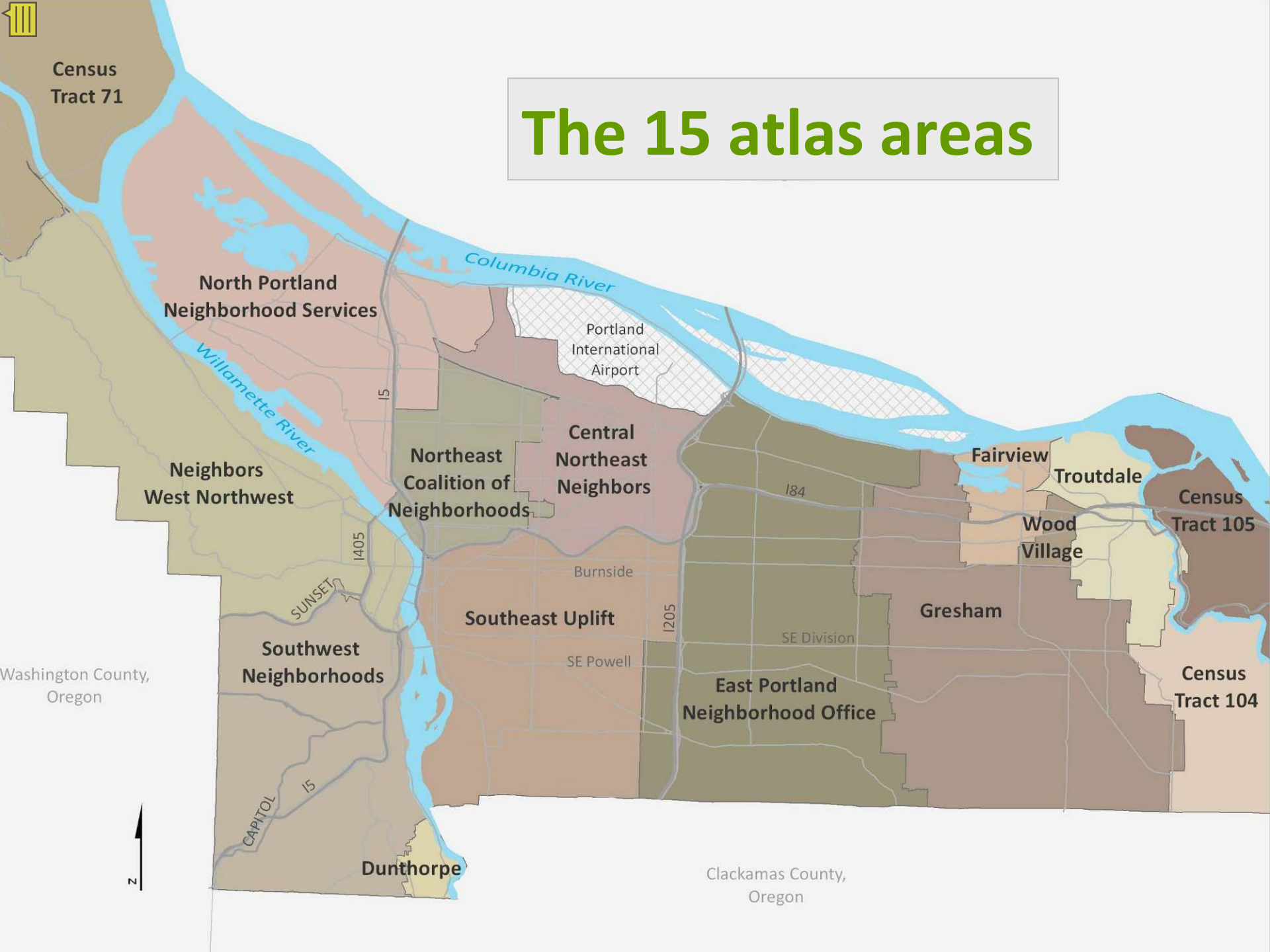


The “ghost map”, London 1854



Census
Tract 71

The 15 atlas areas



Washington County,
Oregon



Clackamas County,
Oregon



What makes a place healthy?

FOOD

grocery options

nearby grocers

transit to grocers

few fast food outlets

retail food env.

limited fast food
near schools

+

PHYSICAL ACTIVITY

nearby parks

rec. facilities

mixed-use zoning

tree canopy

+

TRANSPORTATION

nearby transport

sidewalks

bike routes

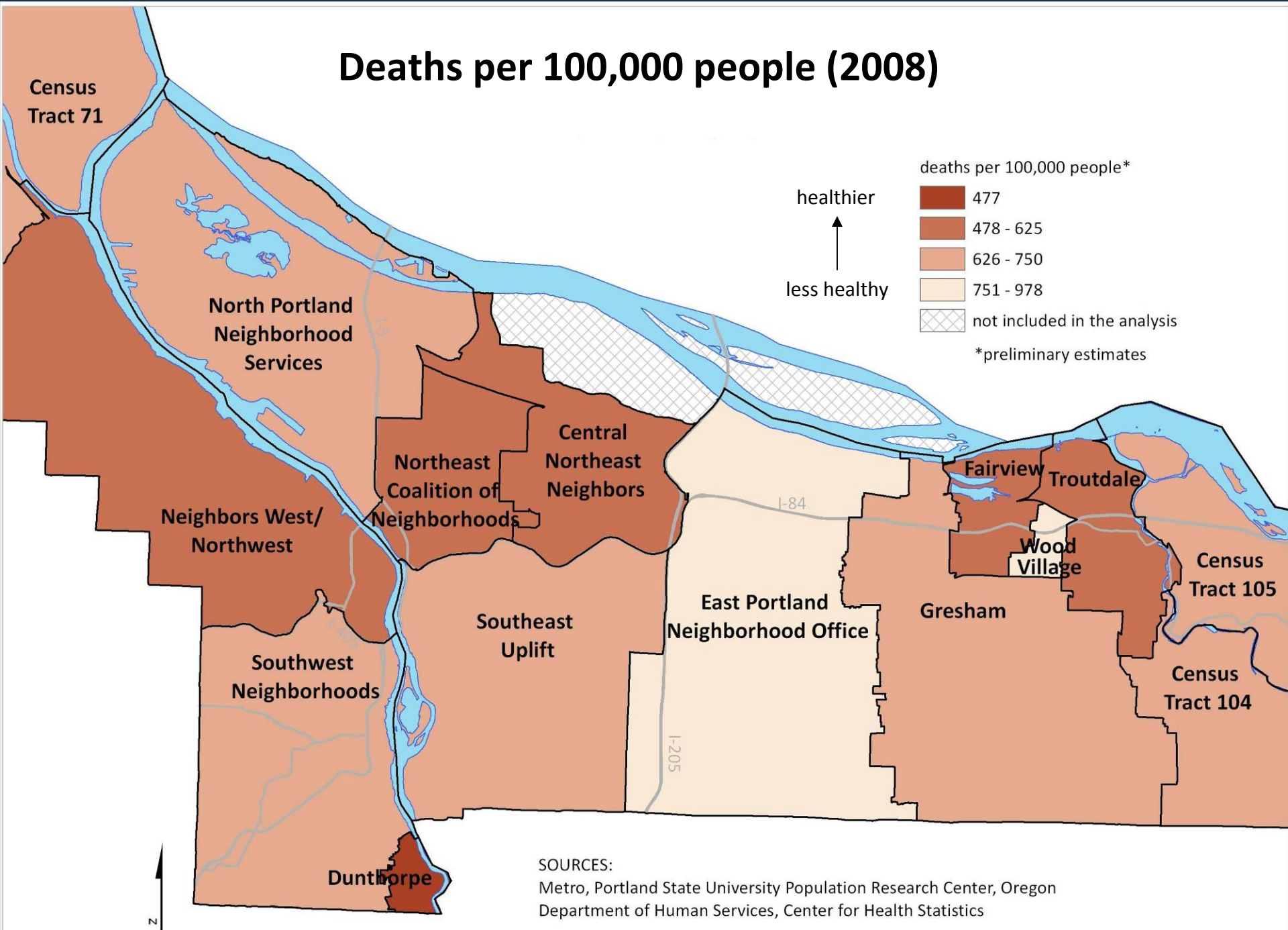
Ranking the areas: built environment



less healthy place

healthier place

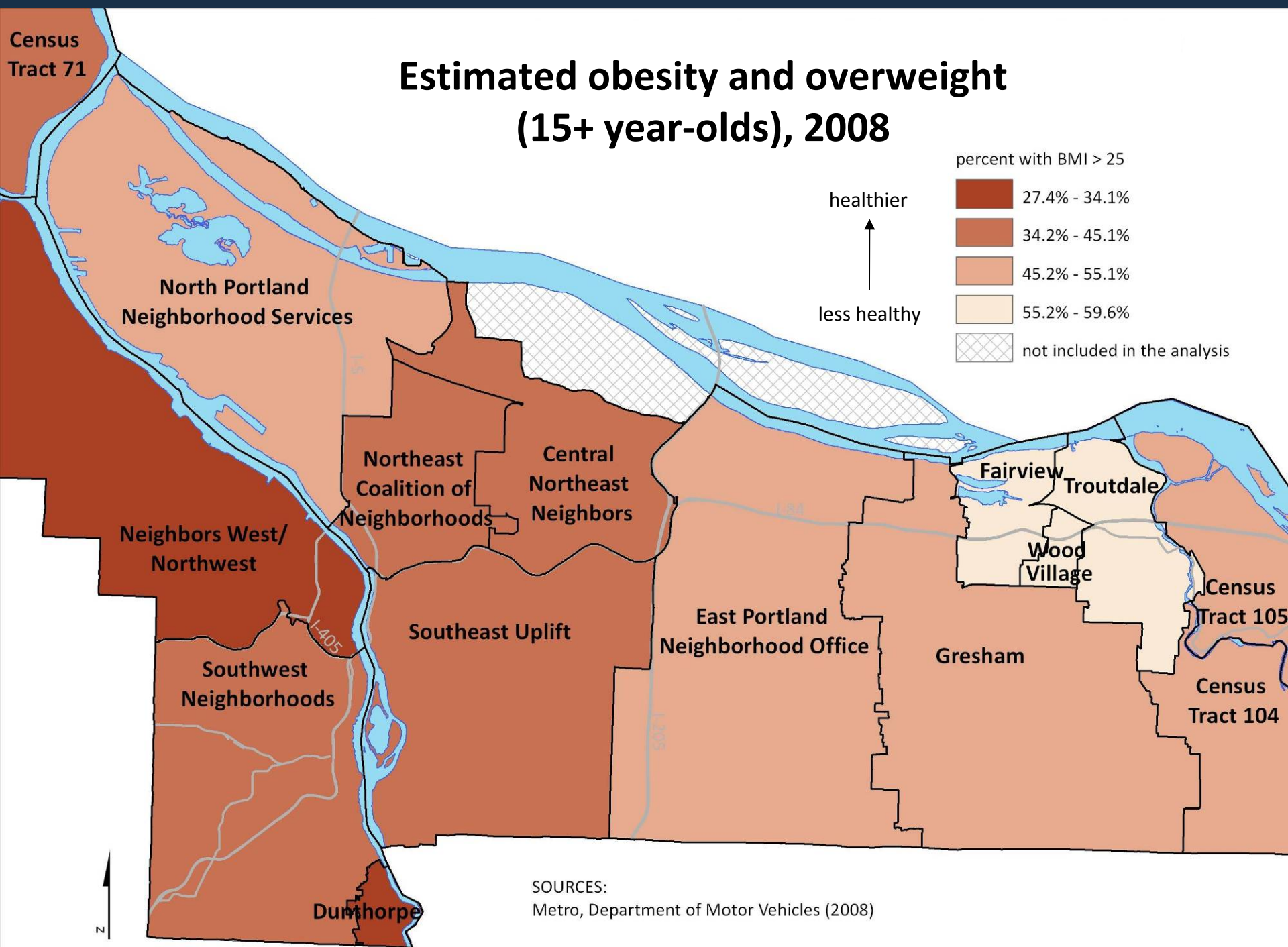
Deaths per 100,000 people (2008)



SOURCES:

Metro, Portland State University Population Research Center, Oregon
Department of Human Services, Center for Health Statistics

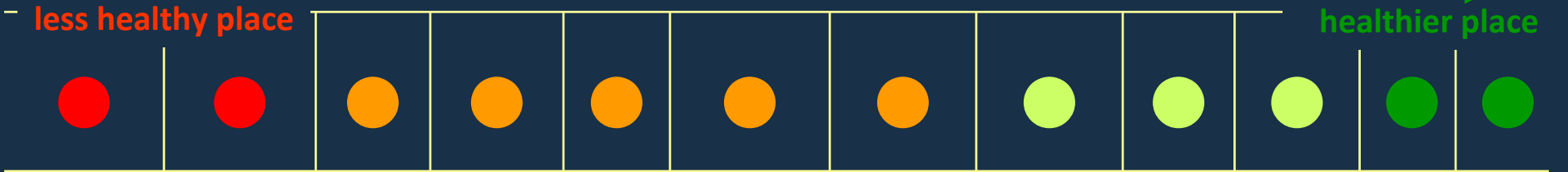
Estimated obesity and overweight (15+ year-olds), 2008



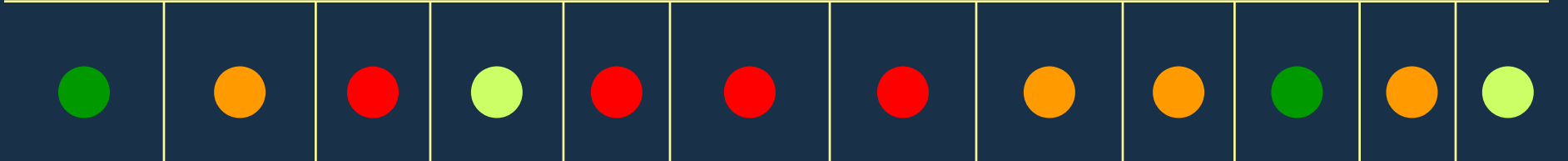


Comparing:

built environment rankings



health rankings



What affects the relationship between place and health?

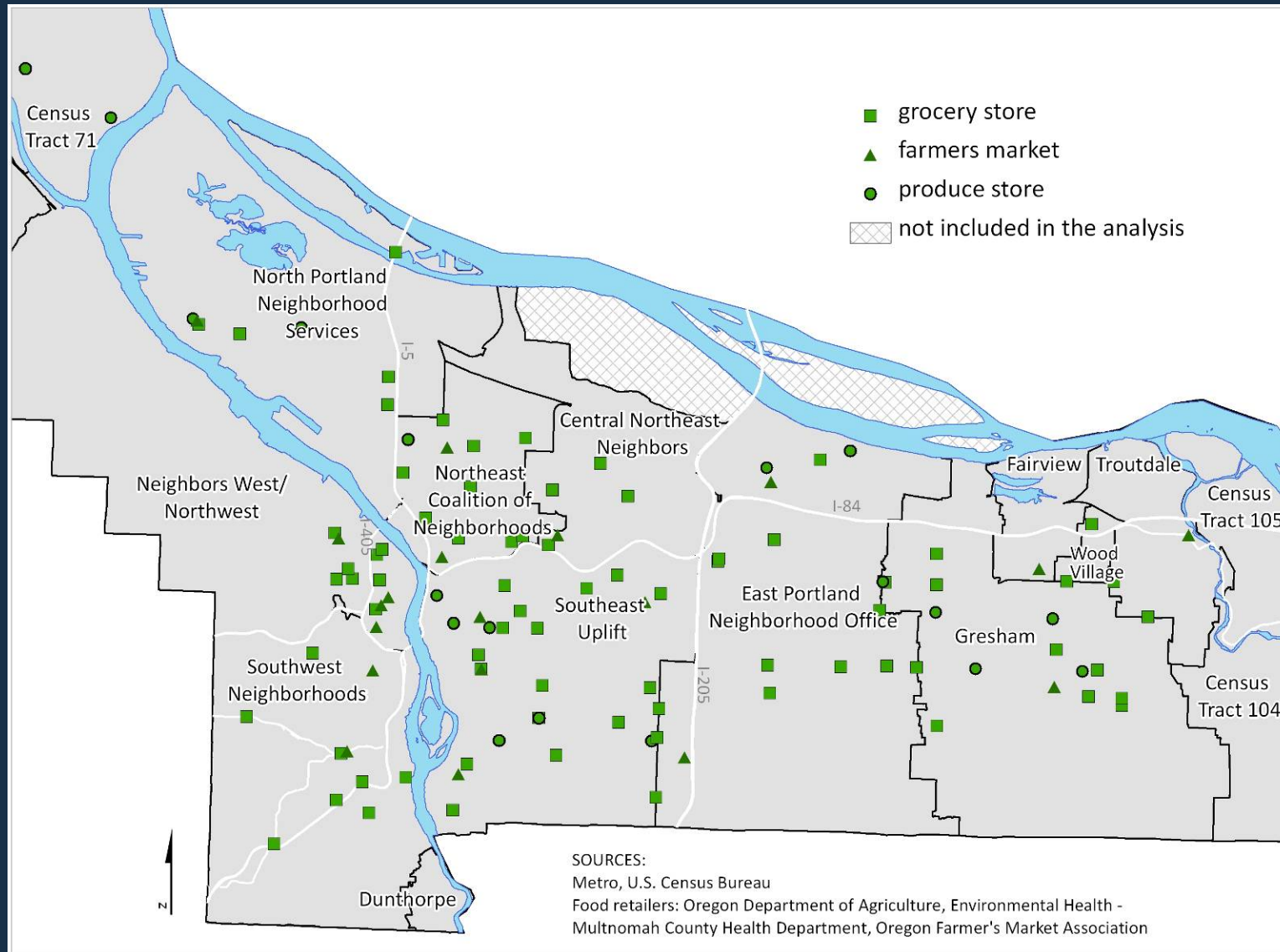


- Social factors, e.g., education and income
- Interaction between place disparities and social disparities

Meeting community needs requires understanding both place and social characteristics.

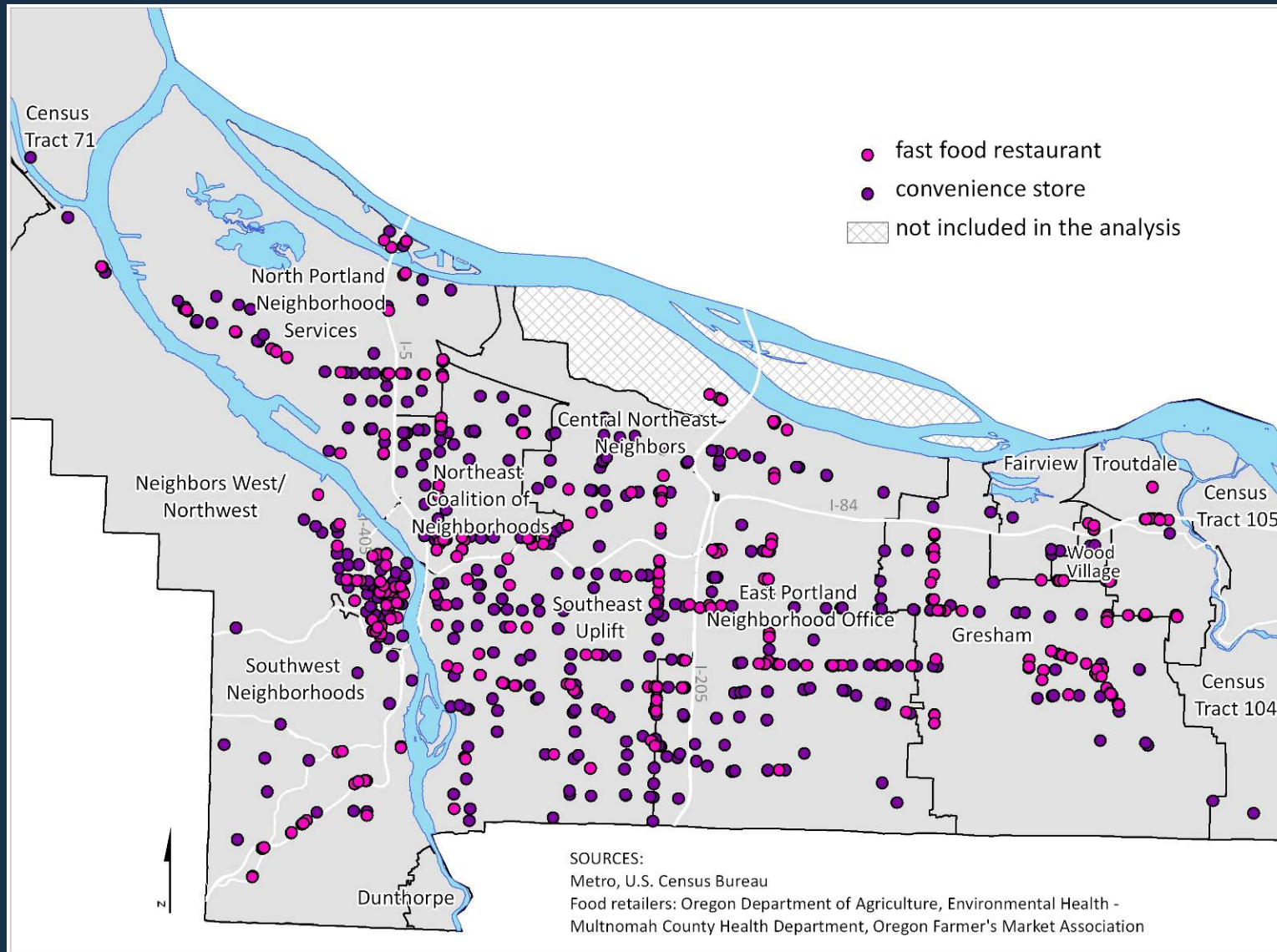


Food options: grocery, produce, farmer's markets



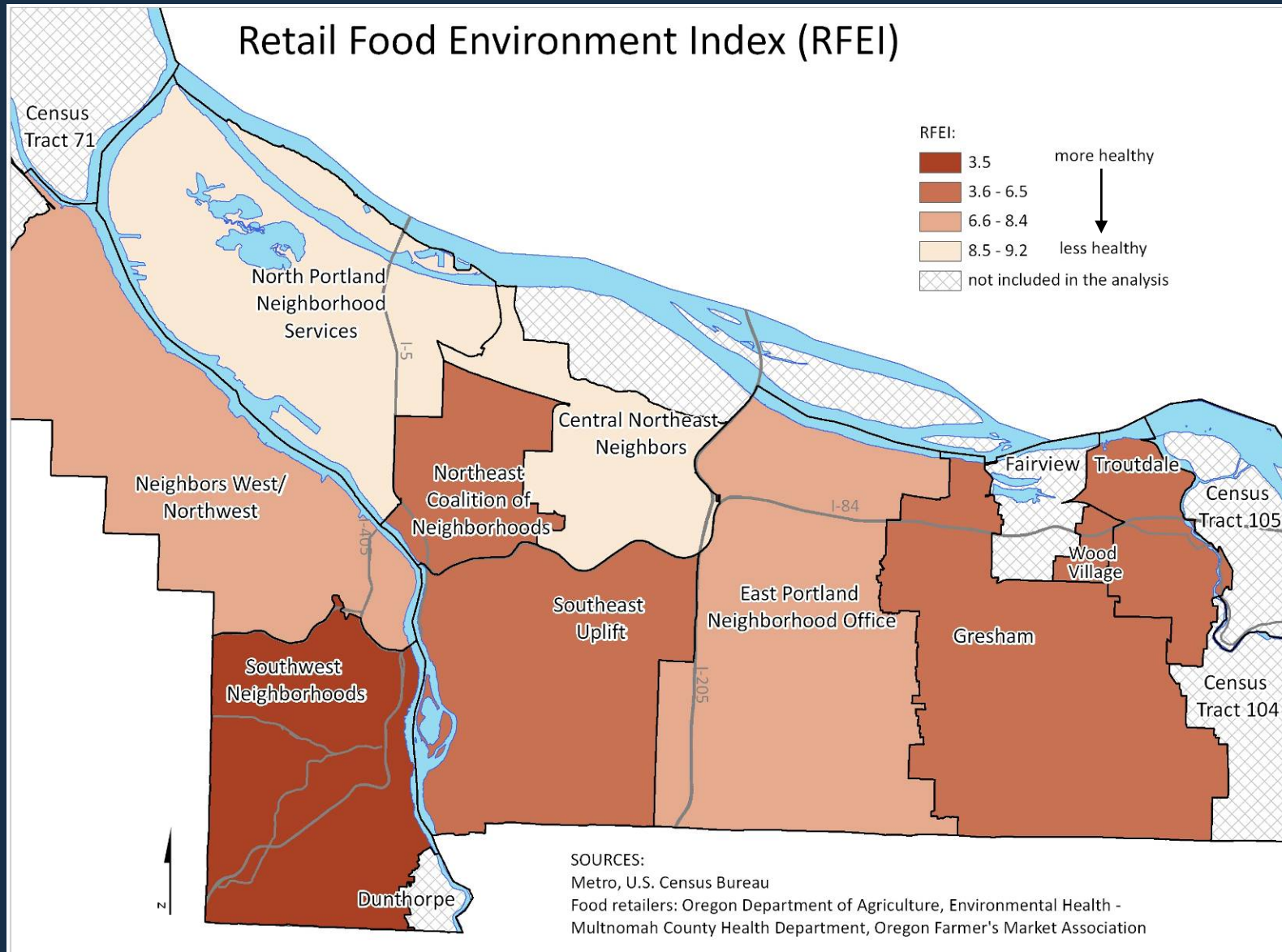


Food options: fast food and convenience stores

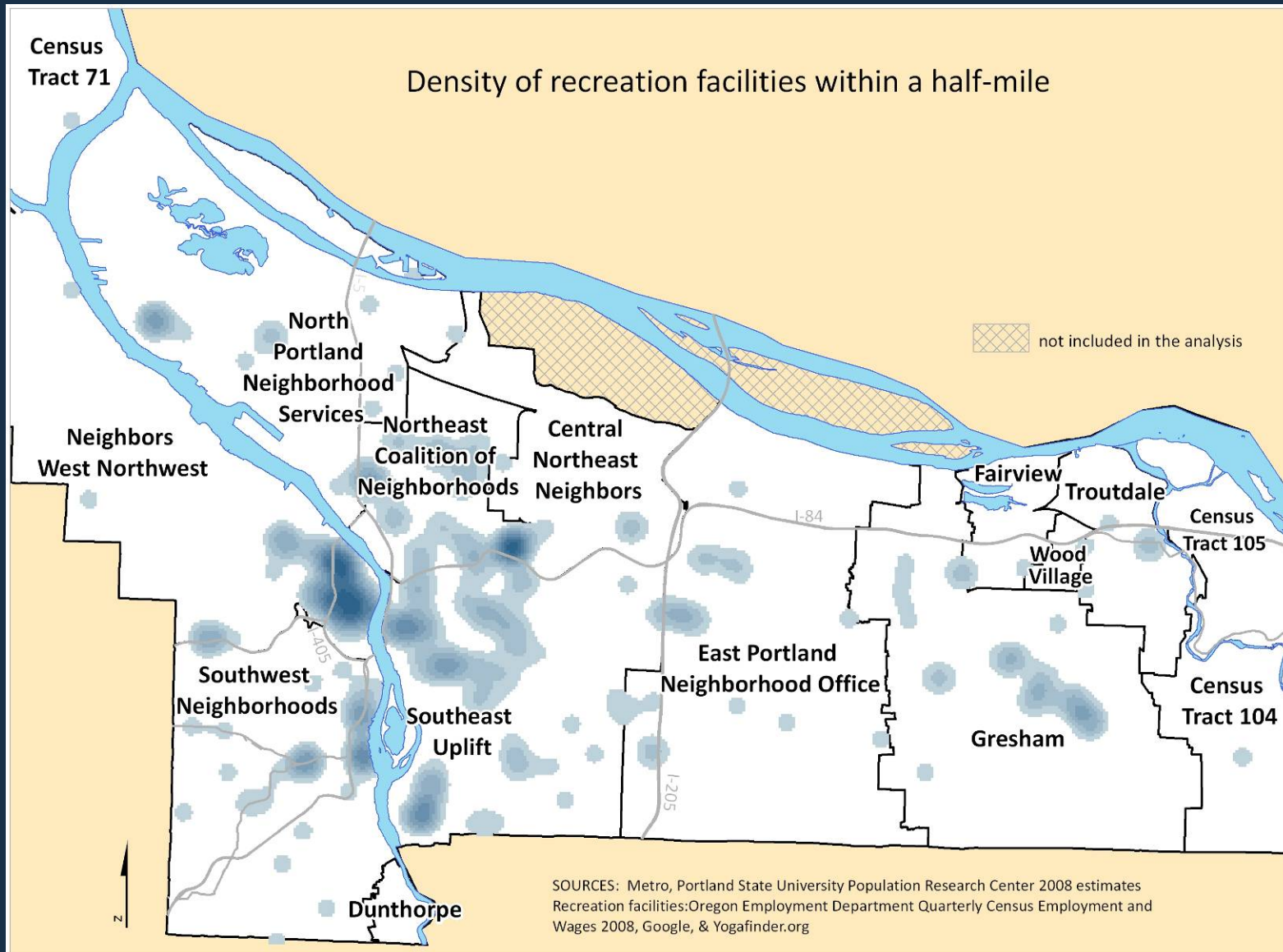




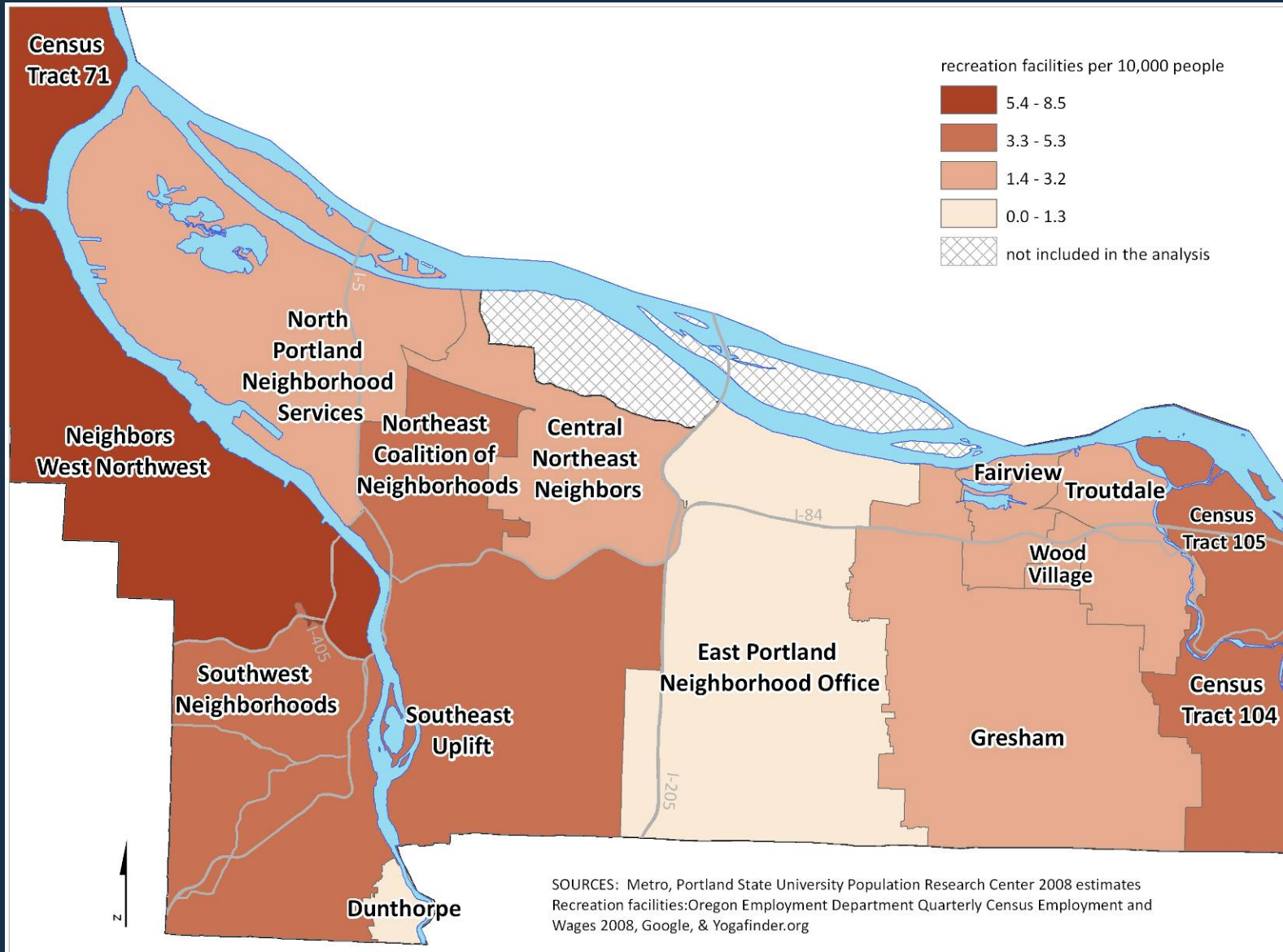
Ranking the food environment: less healthy ÷ healthy = RFEI



Choices for indoor recreation



Recreation facilities per capita





What is your Health Department doing?



- Healthy Retailer Initiative: North Portland
- Incorporating health into urban planning: City of Gresham





Thank you!

Moriah McSharry McGrath
moriah.mcgrath@multco.us
503.988.3663 x24021

Betsy Clapp
elizabeth.clapp@multco.us
503.988.3663 x25844

Download the atlas at:
www.tinyURL.com/MultCoAtlas