

THE PURPOSE OF THIS SURVEY IS TO LOCATE THE CENTERLINE AND RIGHT OF WAY OF SE HOADAN ROAD LYING WITHIN THE SOUTHWEST ONE-QUARTER OF SECTION 14 AND THE SOUTHEAST ONE-QUARTER OF SECTION 15, T. 1 S., R. 3 E., N.M. LAND.

HOADAN ROAD WAS ORIGINALLY ESTABLISHED AS COUNTY ROAD NO. 606 ON SEPTEMBER 6, 1894, AS DESCRIBED IN ROAD RECORDS. A PORTION OF THIS ROAD ROAD NO. 606 ON SEPTEMBER 6, 1894, AS DESCRIBED IN ROAD RECORDS. A PORTION OF THIS ROAD ROAD NO. 606 ON SEPTEMBER 6, 1894, AS DESCRIBED IN ROAD RECORDS. A PORTION OF THIS ROAD ROAD NO. 606 ON SEPTEMBER 6, 1894, AS DESCRIBED IN ROAD RECORDS.

[illegible]

BASES OF BEARINGS IS THE RECORD BEARING OF THE SECTION LINE BETWEEN THE SECTION CORNER COMMON TO SECTIONS 14, 15, 22 AND 23 AND THE 1/4 CORNER COMMON TO SECTIONS 14 AND 15 PER SN 14-67/R.

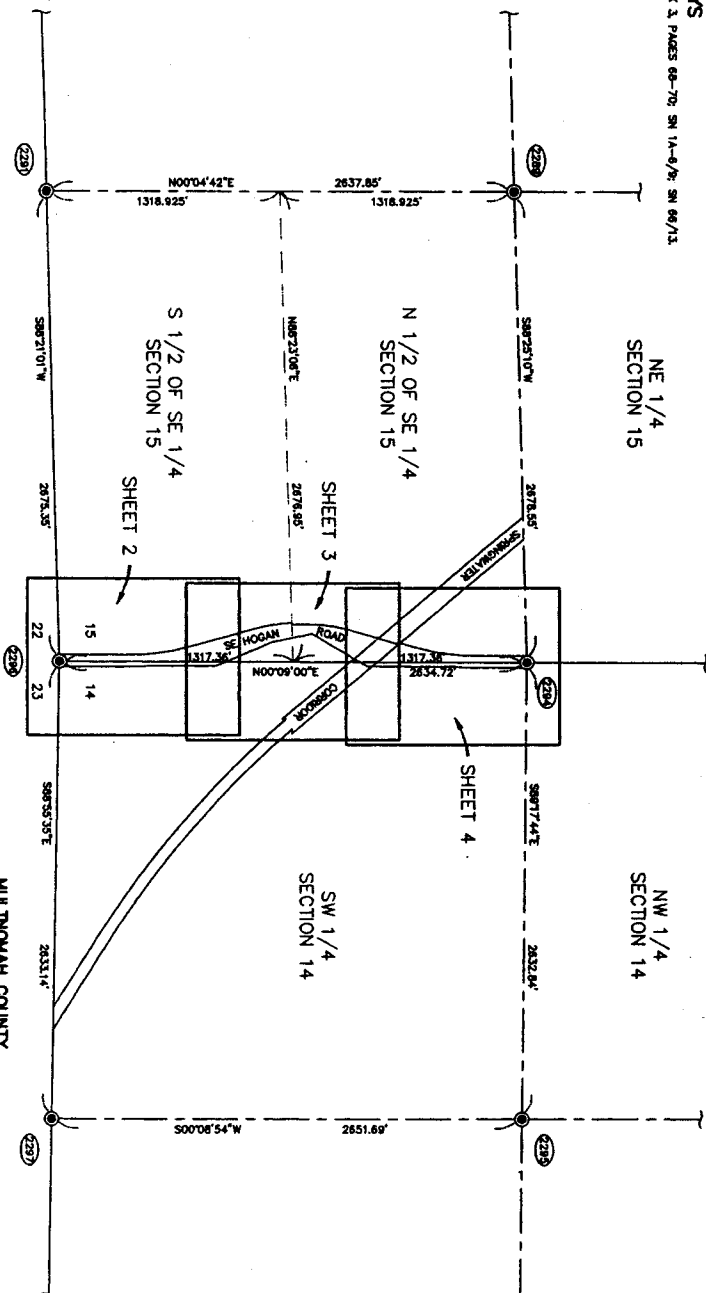
MULTNOMAH COUNTY ROAD BOOK 3, PAGES 66-70; SN 1A-6/8; SN 66/13.

NW 1/4
SECTION 14

FROM STATION 52+51.04 TO STATION 79+30.02

LOCATED IN THE SOUTHWEST 1/4 OF SECTION 14
AND THE SOUTHEAST 1/4 OF SECTION 15,
TOWNSHIP 1 SOUTH, RANGE 3 EAST, W.M.

MULTNOMAH COUNTY, OREGON



NORTH

FOUND GOVERNMENT LAND CORNER MONUMENT AS DESCRIBED IN MONUMENT TABLE.

FOUND MONUMENT IDENTIFIED, SEE MONUMENT TABLE.
BEARING TREE REPORT, MULTITHOMAS COUNTY SURVEY RECORDS.
SURVEY NUMBER, MULTITHOMAS COUNTY SURVEY RECORDS.

POINT NUMBER	MONUMENT DESCRIPTION	REFERENCE
2289	CENTER 1/4 CORNER SECTION 1E, 6 th X 6 th CONCRETE POST WITH 4-1/2" BRASS DISC, RUSH	B.T. F-310
2290	SOUTH 1/4 CORNER SECTION 1E, 6 th X 6 th CONCRETE POST WITH 4-1/2" BRASS DISC, RUSH	B.T. F-283
2291	WEST 1/4 CORNER SECTION 1E, 6 th X 6 th CONCRETE POST WITH 4-1/2" BRASS DISC, DOWN 0.2'	B.T. F-285
2294	CENTER 1/4 CORNER SECTION 1E, 6 th X 6 th CONCRETE POST WITH 4-1/2" BRASS DISC, DOWN 0.2' IN MONUMENT BOX	B.T. F-285
2295	CENTER 1/4 CORNER SECTION 1E, 6 th X 6 th CONCRETE POST WITH 4-1/2" BRASS DISC, DOWN 0.2' IN MONUMENT BOX	B.T. F-285
2296	SOUTHWEST CORNER SECTION 1E, 6 th X 6 th CONCRETE POST WITH 4-1/2" BRASS DISC, DOWN 0.2' IN MONUMENT BOX	B.T. D-43
2297	SOUTH 1/4 CORNER SECTION 1E, 6 th X 6 th CONCRETE POST WITH 4-1/2" BRASS DISC, DOWN 1.6' IN MONUMENT BOX	B.T. F-466

MULTNOMAH COUNTY
SURVEY RECORDS
DATE FILED JULY 17, 2003
58746
REGISTER NUMBER

REGISTERED
PROFESSIONAL
LAND SURVEYOR

Robert A. Hovden


OREGON
JULY 16, 1971
ROBERT A. HOVDEN
954

RENEWAL DATE: 6/30/2004

RENEWAL DATE: 6/30/2004

I CERTIFY THAT THIS SURVEY WAS PREPARED USING HP PRODUCT 1892A ON CONTINENTAL JPCAM2 POLYESTER FILM.

1692A ON CONTINENTAL JPC4M2 POLYESTER FILM.

		MULTNOMAH COUNTY DEPARTMENT OF BUSINESS AND COMMUNITY SERVICES PLANNING AND COMMUNITY SURVEYING SERVICE 1600 E. 190th AVE. PORTLAND, OR 97233	
SE HOGAN ROAD NO. 4974 ESTABLISHMENT STATION 52+51.04 TO STATION 79+30.02			
ROBERT A. HOWDEN, P.L.S.		COUNTY SURVEYOR	
DEDUCE AMT	CHECKED RMT	SHT	1
DATE 1/4/2003	SCALE 1" = 300'	OF	4

FROM STATION 52+51.04 TO STATION 79+30.02

LOCATED IN THE SOUTHWEST 1/4 OF SECTION 14

TOWNSHIP 1 SOUTH, RANGE 3 EAST, W.M.

MULTNOMAH COUNTY, OREGON



MULTNOMAH COUNTY

SURVEY RECORDS

FILED JULY 17 2015

REGISTER NUMBER

REGISTERED
PROFESSIONAL
LAND SURVEYOR

Robert A. Hovden

OREGON
JULY 18, 1971
ROBERT A. HOVDEN
954


RENEWAL DATE: 8/30/2006

RENEWAL DATE: 6/30/2006

I CERTIFY THAT THIS SURVEY WAS PREPARED USING HP PRODUCT:
18924 ON CONTINENTAL 18CM2 POLYESTER FILM.

1892A ON CONTINENTAL JPCAM2 POLYESTER FILM.

[illegible]

	
MULTNOMAH COUNTY	
DEPARTMENT OF BUSINESS AND COMMUNITY SERVICES TRANSPORTATION DIVISION / COUNTY SURVEYOR'S OFFICE 1600 S.E. 160th AVE. PORTLAND, OR 97233	
SE HOGAN ROAD NO. 4974 ESTABLISHMENT STATION 52+51.04 TO STATION 79+30.02	
ROBERT A. HOWDEN, P.L.S. COUNTY SURVEYOR	
Drafted: MHG	Checked: RAH
Date: 2/4/2003	Scale: 1" = 50'
Sht. 2 of 4	

LEGEND

() FOUND GOVERNMENT LAND CORNER MONUMENT AS DESCRIBED IN MONUMENT TABLE.

● FOUND MONUMENT AS DESCRIBED IN MONUMENT TABLE.

• SET 5/8" X 30" IRON ROD WITH THE WOUNDED "M.L.T.I." CO. SURVEY SET 5/8" X 30" IRON ROD WITH A PLUMBER CAMP STAMPED "M.L.N.W.O.D. COUNTY SHERMAN".

♂ FOUND MONUMENT IDENTICAL. SEE MONUMENT TABLE.

(172) FOUND MONUMENT IDENTICAL. SEE MONUMENT TABLE.

() YELLOW PLASTIC CAP.

() RECORD DATA PER HOUSEHOLD RIGHT OF WAY MAP [CIRCA 1963] ON FILE IN MALLINOVA COUNTY ROAD RECORDS.

58746

58746

SE HOGAN ROAD NO. 4974

FROM STATION 52+51.04 TO STATION 79+30.02

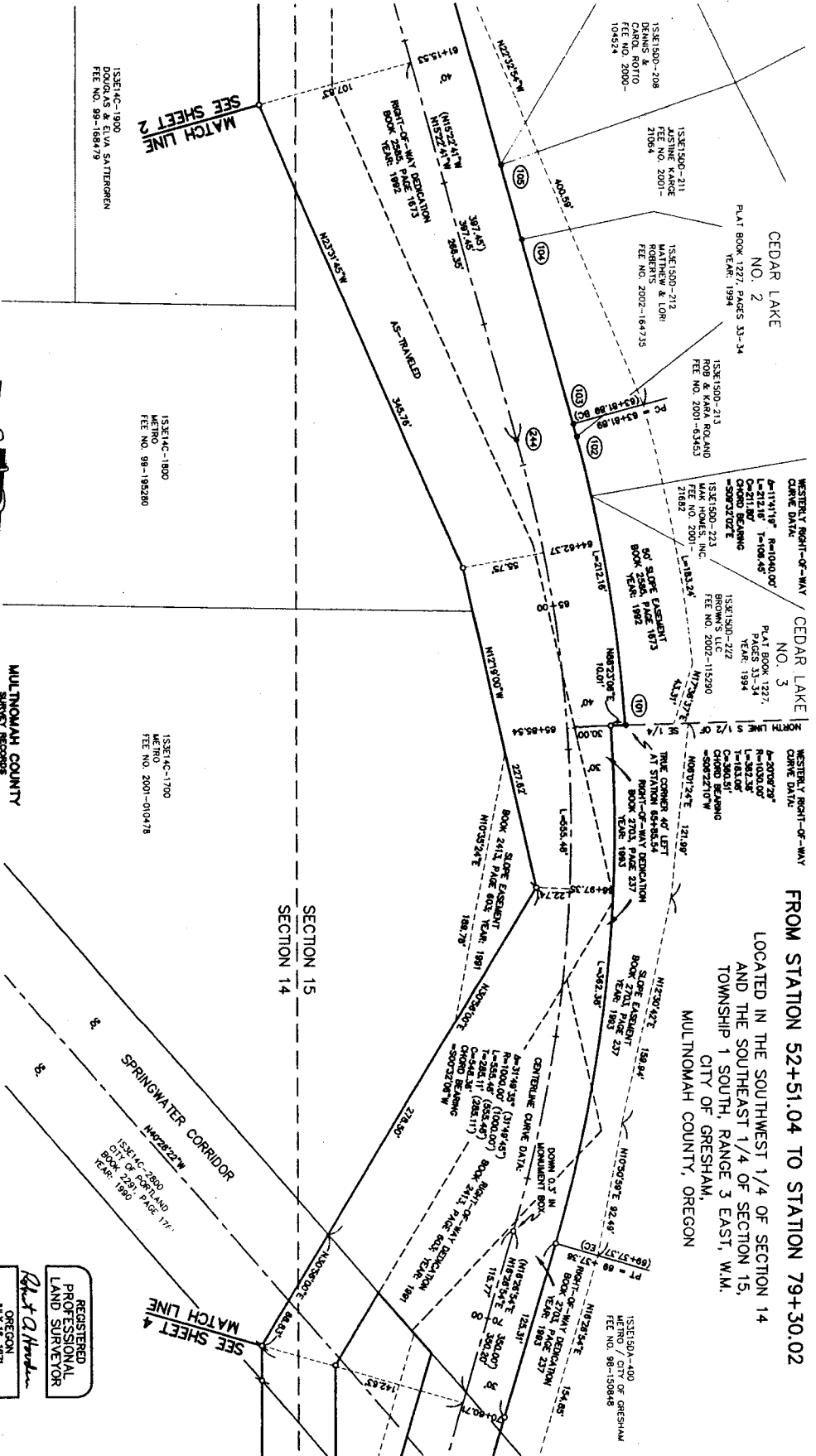
LOCATED IN THE SOUTHWEST 1/4 OF SECTION 14

AND THE SOUTHEAST 1/4 OF SECTION 15,

TOWNSHIP 1 SOUTH, RANGE 3 EAST, W.M.

CITY OF GRESHAM,

MULTNOMAH COUNTY, OREGON



MULTNOMAH COUNTY
SURVEY RECORDS
DATE JULY 17, 2003
REGISTER NUMBER
58746

I CERTIFY THAT THIS SURVEY WAS PREPARED USING THE PRODUCT
18221 IN CONFORMANCE WITH THE POLYMER FILM.

REGISTERED
PROFESSIONAL
LAND SURVEYOR
Robert A. Hovden
ALSO REGISTERED
ROBERT A. HOVDEN
954
RENEWAL DATE: 8/30/2005

- LEGEND**
- FOUND MONUMENT AS NOTED IN MONUMENT TABLE.
 - SET 5/8" X 3/4" IRON ROD WITH YPC MARKED PLAT CO. SURVEY.
 - SET 5/8" X 3/4" IRON ROD WITH YPC MARKED PLAT CO. SURVEY.
 - FOUND MONUMENT IDENTIFIER. SEE MONUMENT TABLE.
 - FOUND MONUMENT IDENTIFIER. SEE MONUMENT TABLE.
 - RECORD DATA PER HOGAN ROAD RIGHT OF WAY MAP [ORCA 1983]
 - ON FILE IN MULTNOMAH COUNTY ROAD RECORDS.

POINT NUMBER	STATION	OFFSET	MONUMENT DESCRIPTION	REFERENCE
105	51+00.00	40.50' LT.	5/8" IRON ROD	PLAT OF CEDAR LAKE NO. 2
104	52+50.00	40.50' LT.	5/8" IRON ROD	PLAT OF CEDAR LAKE NO. 2
244	53+81.80	0.00'	5/8" IRON PIPE DOWN 0.3' IN MONUMENT BOX - SET YPC	SET BY MULTNOMAH CO. IN 1983
103	53+81.84	40.50' LT.	5/8" IRON PIPE DOWN 0.3' IN MONUMENT BOX - SET YPC	SET BY MULTNOMAH CO. IN 1983
102	54+00.00	40.50' LT.	5/8" IRON PIPE DOWN 0.3' IN MONUMENT BOX - SET YPC	SET BY MULTNOMAH CO. IN 1983
101	55+50.00	40.50' LT.	5/8" IRON PIPE DOWN 0.3' IN MONUMENT BOX - SET YPC	SET BY MULTNOMAH CO. IN 1983

MULTNOMAH COUNTY
DEPARTMENT OF BUSINESS AND COMMUNITY SERVICES
1800 SE 180TH AVE. PORTLAND, OR 97233

SE HOGAN ROAD NO. 4974 ESTABLISHMENT
STATION 52+51.04 TO STATION 79+30.02

ROBERT A. HOVDEN, P.L.S. COUNTY SURVEYOR

Dated: 2/4/2003 Scale: 1" = 50'

Sht. 3 of 4

58746

58746

