

MULTNOMAH COUNTY CHARTER, Vol. 2, Bk. 2
-Report of the Sub-Committee on Public
Works

A

B

C

D

F

G

H

I

J

K

M

Mc

N

O

P

Q

R

S

T

U

V

W

XY

Z

HYPOTHESIS

REPORT
OF THE
SUB-COMMITTEE ON PUBLIC WORKS
TO THE
HOME RULE CHARTER COMMITTEE
OF
MULTNOMAH COUNTY, OREGON

John Sonderen - Chairman
Neva Elliott
George Birnie
John Elorriaga

Summary and Recommendations. The Sub-Committee on Public Works was charged by the Home Rule Charter Committee with examining the existing functions of the Road Department and of the office of County Surveyor. The sub-committee viewed its role as including all facets of county government pertaining to public works in the usual connotation of the words. Accordingly, the organizational alignment recommended will include some functions not presently carried on by either of these two offices.

In summary, the sub-committee recommends the creation of a Department of Public Works to include the present functions of the Division of Roads and Bridges; the County Surveyor; the design and construction of all county facilities; the enforcement of the zoning ordinances and building codes; maintenance of county facilities and grounds (other than custodial); operation of refuse disposal facilities; and administration of county service districts for providing water, sanitation, drainage, and street lighting.

BACKGROUND

Multnomah County Road Department. The present Multnomah County Road Department has grown from a small office in the Multnomah County Court House, and its main division is commonly known as the Division of Roads and Bridges. This office of county government is the only department of county government that does not rely upon the real property tax as its chief source of revenue, but instead is almost entirely supported by gas tax revenues allotted to the county from the State of Oregon. However, since this department's functions have grown to include far more responsibilities other than roads and bridges, such as the repair of county vehicles, it does rely upon real property revenue,

to an extent, in that the work that it undertakes for other departments is charged back against that department and is thus reimbursed from the particular department's budget. It is the feeling of this committee that all of the present operations falling under the road department are necessary and should be continued; however, it is the committee's feeling that in view of the road department's functions, it is certainly misnamed and there is a need for expanding the services of this department and renaming it more properly as the Department of Public Works.

County Surveyor. The County Surveyor is presently an elected official of the county government charged with maintaining records of surveys and performing other duties as indicated in the following chart.

SURVEYOR
<ol style="list-style-type: none">1. Maintain records of all surveys made by himself and deputies, and the County Roadmaster.2. Number his surveys and the surveys made by the County Roadmaster progressively.3. Maintain each record as required by law.4. Deliver copies of any surveys to any persons or court requiring same according to law.5. Establish every survey by stakes according to law.6. Make all surveys of legal sub-divisions according to law.7. Establish all corners of government surveys where the witness trees have been cut or have fallen down and where the bearing marks or blazes can be ascertained.8. Establish upon order of the county court or board of county commissioners all corners of government surveys where all physical evidence is destroyed and cannot be found but where official government notes are available.9. Make a complete record of all surveys at the expiration of his term.

Recommendation. Since the Division of Roads and Bridges of the Multnomah County Road Department has a surveying section which has a component of at least eight licensed surveyors, the members of this sub-committee can see no reason whatsoever why the county surveyor should be an elected official. The sub-committee, therefore, recommends abolition of the office of County Surveyor and the assignment of the surveyor's duties to one of the divisions of the Department of Public Works.

It is the feeling of the committee that the Division of Roads and Bridges which now constitutes the largest section of the Road Department, be maintained in some form in the newly created Department of Public Works to perform the following functions.

DIVISION OF ROADS & BRIDGES
<ol style="list-style-type: none">1. Engineering and design of roads and bridges.2. Construction and maintenance of roads and bridges.3. Operation of rock quarries.4. Surveying.

Building, Construction, and Maintenance. The Sub-Committee on Public Services has recommended that the maintenance functions of the parks, cemeteries, and county fair be accomplished by a public works department. This recommendation has considerable merit in combining like functions for economy, however, this sub-committee would recommend that if this function is undertaken by the Department of Public Works, it should be done on a scheduled basis and consist of maintenance only without the Public Works Department being involved in the actual operations of these facilities other than to furnish this maintenance to them. (It is further understood by this committee that at the present time this is being done to a limited extent and seemingly has worked out very well.)

A second recommendation of the Sub-Committee on Public Services is that of moving the enforcement of the building code and the zoning ordinance to the Public Works Department. This sub-committee concurs in that recommendation, but would go further in recommending that the enforcement of the plumbing code be transferred from the Health Department to the Public Works Department to be enforced along with the other building codes and restrictions.

The sub-committee would recommend that all design and construction of county facilities should fall under the Department of Public Works. Accordingly, a division of this department, namely, a Division of Construction and Maintenance is recommended to accomplish the following.

CONSTRUCTION AND MAINTENANCE
1. Enforcement of building, sanitary, and zoning codes.
2. Design and construction of county facilities.
3. Administration of Assessment District Improvement Fund.
4. Maintenance of county facilities and grounds (other than custodial).

Public Utilities. Multnomah County currently provides a limited number of public utilities in the county's operations of the Vance Pit Sanitary Land Fill, and the administration of two sewer districts. Depending upon the forthcoming findings and recommendations of the Sub-Committee on Special Service Districts and the desires of the people in the unincorporated areas, it is the feeling of this committee that the county in the future will most likely find itself furnishing urban services. Since the formation of the County Service Districts is currently authorized for sewerage, drainage, and street lighting, it is recommended by this committee that a Division of Public Utilities be formed under the Department of Public Works to carry out the furnishing of these services and the following duties.

PUBLIC UTILITIES DIVISION
<ol style="list-style-type: none">1. Sanitary disposal facilities.2. Administration of sewage facilities fund.3. Administration of County Service Districts<ol style="list-style-type: none">a. Sewage Districtb. Water District.c. Street Lighting Districtd. Drainage District

Conclusion. To facilitate an organization to provide the public works of Multnomah County and to coordinate the public works activities, this sub-committee recommends the Department of Public Works under the direction of an appointed registered professional engineer as indicated in the following functional organization chart.

DEPARTMENT OF PUBLIC WORKS

DIVISION OF
ROADS AND BRIDGES

1. Engineering and design of roads and bridges.
2. Construction and maintenance of roads and bridges.
3. Operation of rock quarries.
4. Surveying.

CONSTRUCTION AND
MAINTENANCE DIVISION

1. Enforcement of building, sanitary, and zoning codes.
2. Design and construction of county facilities.
3. Administration of Assessment District Improvement Fund.
4. Maintenance of county facilities and grounds (other than custodial).

PUBLIC UTILITIES
DIVISION

1. Sanitary disposal facilities.
2. Administration of sewage facilities fund.
3. Administration of County Service Districts.
 - a. Sewage District.
 - b. Water District.
 - c. Street Lighting District
 - d. Drainage District.

HYPOTHESIS
ON THE
ESTABLISHMENT
OF A
DEPARTMENT OF PUBLIC WORKS

2.

Building Code Division
1. RECEIVES, PROCESSES, AND CHECKS BUILDING PERMITS REQUESTS. 2. ISSUES BUILDING PERMITS.

Inspection and Enforcement Division
1. INSPECTS BUILDINGS IN PROGRESS. 2. ENFORCES BUILDING CODE. 3. ENFORCES ZONING ORDINANCES.

Zoning Division
1. PROCESSES ZONE CHANGE REQUESTS.

COUNTY FAIR
2. Maintain Fairgrounds and/or Exposition Complex.

DIVISION OF PARKS AND MEMORIALS FUNCTIONAL STATEMENT
1. maintains all county owned cemeteries. 2. maintains all county owned parks. 4. Supervises development of new parks.

ENGINEERING
1. Studies traffic patterns, makes projections, and designs roads & bridges for future construction. 2. Designs improvements on existing roads & bridges. 3. Studies and plans improvements on traffic control and road safety.

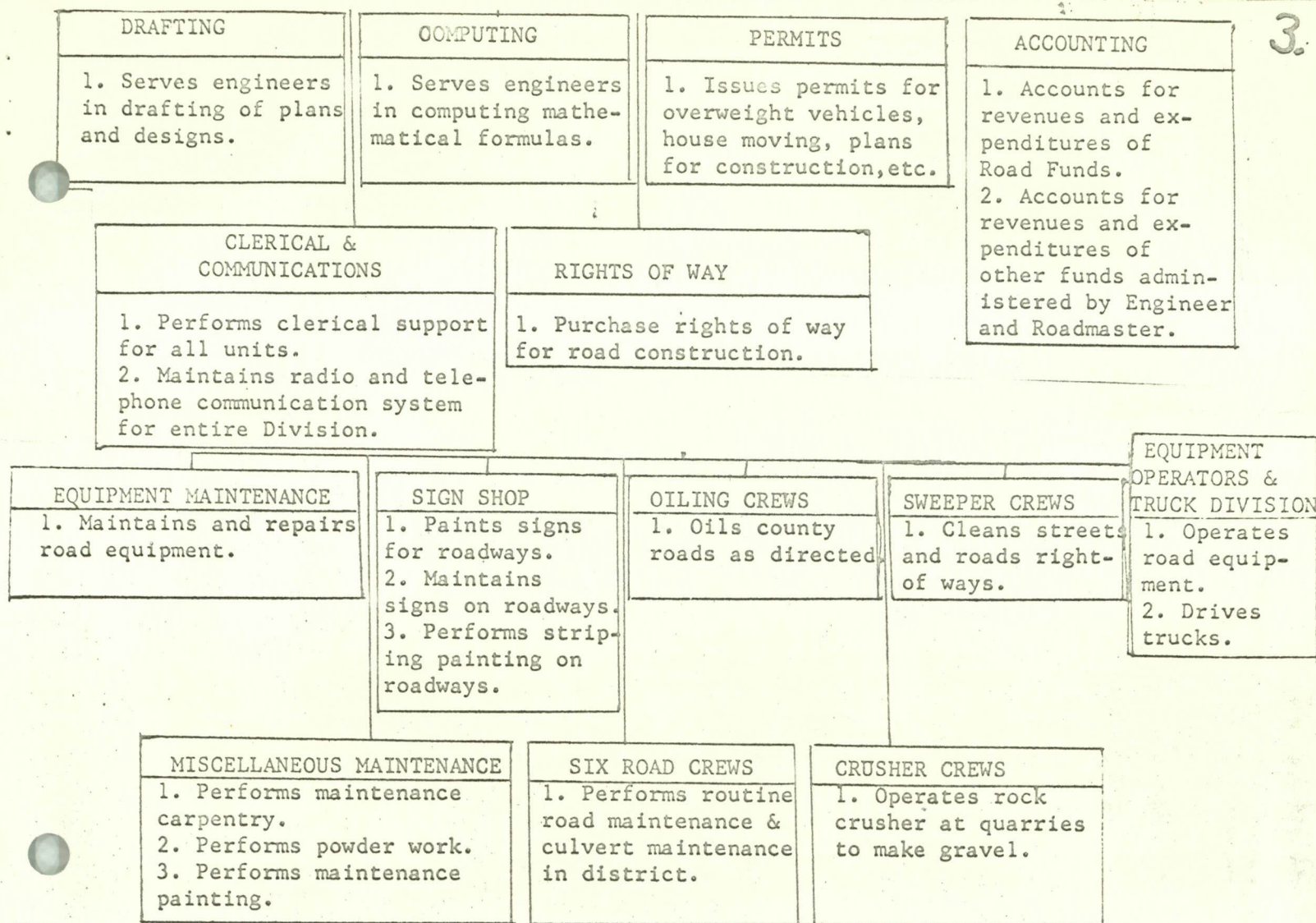
INSPECTION
1. Inspects construction in progress to ascertain compliance with basic plan and design.

SURVEYING
1. Surveys land for road construction and road improvement.

MAINTENANCE
1. Repairs and maintains all bridges owned by Multnomah County

BRIDGE OPERATION
1. Operates draw bridges. 2. Controls traffic when bridges are open.

SURVEYOR
1. Maintain records of all surveys made by himself and deputies, and the county roadmaster. 2. Number his surveys and the surveys made by the county roadmaster progressively. 3. Maintain each record as required by law. 4. Deliver copies of any surveys to any persons or court requiring same according to law. 5. Establish every survey by stakes according to law. 6. Make all surveys of legal sub-divisions according to law. 7. Establish all corners of government surveys where the witness trees have been cut or have fallen down and where the bearing marks or blazes can be ascertained. 8. Establish upon order of the county court or board of county commissioners all corners of government surveys where all physical evidence is destroyed and cannot be found but where official government notes are available. 9. Make a complete record of all surveys at the expiration of his term.



The Sub-Committee on Public Works was charged by the Home Rule Charter Committee with exploring the functions currently performed by the Department of Roads & Bridges, the Vance Pit Sanitary Fill, sewage facilities, and the Surveyor. In addition and as meetings of other sub-committees have progressed, there are functional areas under the purview of other sub-committees that have now been transferred for the Sub-Committee on Public Works to examine. These include the enforcement functions of the building and zoning codes of the Planning Commission; the maintenance of parks, cemeteries, and fairgrounds; the supervision of the development of parks; and the operation of any forthcoming county service districts as they relate to public works. Included on pages 2 and 3 are all of the functional statements of all of the departments, divisions, and units of county government to be examined by this sub-committee and be placed into an organizational alignment for recommendation to the committee as a whole.

- COUNTY SERVICE DISTRICTS**
- a. Sewer facilities
 - b. Street lighting
 - c. Drainage
 - d. Water supply

VANCE PIT SANITARY FILL

- 1. Operates refuse disposal dump.

This hypothesis visualizes a Department of Public Works with three divisions as indicated on the subsequent pages.

4.

Building Code Division

1. RECEIVES, PROCESSES, AND CHECKS BUILDING PERMITS REQUESTS.
2. ISSUES BUILDING PERMITS.

Inspection and Enforcement Division

1. INSPECTS BUILDINGS IN PROGRESS.
2. ENFORCES BUILDING CODE.
3. ENFORCES ZONING ORDINANCES.

Zoning Division

1. PROCESSES ZONE CHANGE REQUESTS.

COUNTY FAIR

2. Maintain Fairgrounds and/or Exposition Complex.

DIVISION OF PARKS AND MEMORIALS FUNCTIONAL STATEMENT

1. _____ maintains all county owned cemeteries.
2. _____ maintains all county owned parks.
4. Supervises development of new parks.

ENGINEERING

1. Studies traffic patterns, makes project ons, and designs roads & bridges for future construction.
2. Designs improvements on existing roads & bridges.
3. Studies and plans improvements on traffic control and road safety.

INSPECTION

1. Inspects construction in progress to ascertain compliance with basic plan and design.

SURVEYING

1. Surveys land for road construction and road improvement.

MAINTENANCE

1. Repairs and maintains all bridges owned by Multnomah County

BRIDGE OPERATION

1. Operates draw bridges.
2. Controls traffic when bridges are open.

SURVEYOR

1. Maintain records of all surveys made by himself and deputies, and the county roadmaster.
2. Number his surveys and the surveys made by the county roadmaster progressively.
3. Maintain each record as required by law.
4. Deliver copies of any surveys to any persons or court requiring same according to law.
5. Establish every survey by stakes according to law.
6. Make all surveys of legal sub-divisions according to law.
7. Establish all corners of government surveys where the witness trees have been cut or have fallen down and where the bearing marks or blazes can be ascertained.
8. Establish upon order of the county court or board of county commissioners all corners of government surveys where all physical evidence is destroyed and cannot be found but where official government notes are available.
9. Make a complete record of all surveys at the expiration of his term.

DRAFTING

1. Serves engineers in drafting of plans and designs.

COMPUTING

1. Serves engineers in computing mathematical formulas.

PERMITS

1. Issues permits for overweight vehicles, house moving, plans for construction, etc

ACCOUNTING

1. Accounts for revenues and expenditures of Road Funds.
2. Accounts for revenues and expenditures of other funds administered by Engineer and Roadmaster.

CLERICAL & COMMUNICATIONS

1. Performs clerical support for all units.
2. Maintains radio and telephone communication system for entire Division.

RIGHTS OF WAY

1. Purchase rights of way for road construction.

EQUIPMENT MAINTENANCE

1. Maintains and repairs road equipment.

SIGN SHOP

1. Paints signs for roadways.
2. Maintains signs on roadways.
3. Performs striping painting on roadways.

OILING CREWS

1. Oils county roads as directed

SWEEPER CREWS

1. Cleans street and roads right-of ways.

EQUIPMENT

OPERATORS & TRUCK DIVISION

1. Operates road equipment.
2. Drives trucks.

MISCELLANEOUS MAINTENANCE

1. Performs maintenance carpentry.
2. Performs powder work.
3. Performs maintenance painting.

SIX ROAD CREWS

1. Performs routine road maintenance & culvert maintenance in district.

CRUSHER CREWS

1. Operates rock crusher at quarries to make gravel.

DIVISION OF ROADS & BRIDGES

1. Engineering & design of roads & bridges.
2. Construction & maintenance of roads and bridges.
3. Operation of rock quarries.
4. Surveying.

COUNTY SERVICE DISTRICTS

- a. Sewer facilities
- b. Street lighting
- c. Drainage
- d. Water supply

VANCE PIT
SANITARY FILL

1. Operates refuse disposal dump.

There is currently within Multnomah County a Division of Roads & Bridges. In addition, Multnomah County has an elected County Surveyor. No particular change is recommended in the status quo other than the administration of the surveyor functions. This hypothesis visualizes a Division of Roads & Bridges within a Department of Public Works encompassing all of the present functions of the Division of Roads & Bridges plus the current functions of the County Surveyor.

6.

Building Code Division

1. RECEIVES, PROCESSES, AND CHECKS BUILDING PERMITS REQUESTS.
2. ISSUES BUILDING PERMITS.

Inspection and Enforcement Division

1. INSPECTS BUILDINGS IN PROGRESS.
2. ENFORCES BUILDING CODE.
3. ENFORCES ZONING ORDINANCES.

Zoning Division

1. PROCESSES ZONE CHANGE REQUESTS.

COUNTY FAIR

2. Maintain Fairgrounds and/or Exposition Complex.

DIVISION OF PARKS AND MEMORIALS FUNCTIONAL STATEMENT

1. maintains all county owned cemeteries.
2. maintains all county owned parks.
4. Supervises development of new parks.

ENGINEERING

1. Studies traffic patterns, makes projections, and designs roads & bridges for future construction.
2. Designs improvements on existing roads & bridges.
3. Studies and plans improvements on traffic control and road safety.

INSPECTION

1. Inspects construction in progress to ascertain compliance with basic plan and design.

SURVEYING

1. Surveys land for road construction and road improvement.

MAINTENANCE

1. Repairs and maintains all bridges owned by Multnomah County.

BRIDGE OPERATION

1. Operates draw bridges.
2. Controls traffic when bridges are open.

SURVEYOR

1. Maintain records of all surveys made by himself and deputies, and the county roadmaster.
2. Number his surveys and the surveys made by the county roadmaster progressively.
3. Maintain each record as required by law.
4. Deliver copies of any surveys to any persons or court requiring same according to law.
5. Establish every survey by stakes according to law.
6. Make all surveys of legal sub-divisions according to law.
7. Establish all corners of government surveys where the witness trees have been cut or have fallen down and where the bearing marks or blazes can be ascertained.
8. Establish upon order of the county court or board of county commissioners all corners of government surveys where all physical evidence is destroyed and cannot be found but where official government notes are available.
9. Make a complete record of all surveys at the expiration of his term.

DRAFTING

1. Carries on engineering in drafting of plans and designs.

COMPUTING

1. Carries on engineering in computing mathematical formulas.

PERMITS

1. Issues permits for overweight vehicles, house moving, plans for construction, etc.

ACCOUNTING

1. Accounts for revenues and expenditures of Road Funds.
2. Accounts for revenues and expenditures of other funds administered by Engineers and Roadmasters.

CLERICAL & COMMUNICATIONS

1. Performs clerical support for all units.
2. Maintains radio and telephone communication system for entire Division.

RIGHTS-OF-WAY

1. Purchases rights-of-way for road construction.

EQUIPMENT MAINTENANCE

1. Maintains and repairs road equipment.

SIGN SHOP

1. Paints signs for roadways.
2. Maintains signs on roadways.
3. Performs striping painting on roadways.

PAVING CREW

1. Grades county roads as directed.

CLEANER CREW

1. Cleans streets and roads right-of-ways.

EQUIPMENT OPERATORS

TRUCK DIVISION

1. Operates road equipment.
2. Drives trucks.

MISCELLANEOUS MAINTENANCE

1. Performs maintenance carpentry.
2. Performs powder work.
3. Performs maintenance painting.

GRASS ROAD CREW

1. Performs routine road maintenance & culvert maintenance in district.

CRUSHER CREW

1. Operates rock crusher at quarries & wash plants.

CONSTRUCTION & MAINTENANCE DIVISION

1. Enforcement functions of building & zoning codes.
2. Performs architectural design and construction of county facilities.
3. Administers Assessment District Improvement Fund.
4. Maintains county facilities and grounds.

COUNTY SERVICE DISTRICTS

- a. Sewer facilities
- b. Street lighting
- c. Drainage
- d. Water supply

VANCE PIT
SANITARY FILL

1. Operates refuse disposal dump.

A second division of a Department of Public Works is visualized as the Construction and Maintenance Division for the purpose of administering some of the functions that are now handled in other departments of county government but which would more appropriately fall into the category of public works. This would include such things as the enforcement of the building and zoning codes now accomplished by the Planning Commission and the design and construction of county facilities now accomplished by the office of the Board of County Commissioners.

While the County Engineer now handles the petitions for improvements out of the Assessment District Improvement Fund, this hypothesis visualizes all of the functions of the ADIF falling into this division under public works.

The last functional item listed under the Construction & Maintenance Division visualizes a maintenance and repair facility for the maintenance and repair of buildings and grounds of the cemeteries, the parks, and the fairgrounds or exposition complex. This is not to suggest that the Department of Public Works will get itself involved in the operation or administration of these parks and cemeteries or fairgrounds.

~~Building Code Division~~

- ~~1. RECEIVES, PROPOSES, AND CHECKS BUILDING PERMIT REQUESTS.~~
- ~~2. ISSUES BUILDING PERMITS.~~

~~Inspection and Enforcement Division~~

- ~~1. INSPECTS BUILDINGS IN PROGRESS.~~
- ~~2. ENFORCES BUILDING CODE.~~
- ~~3. ENFORCES ZONING ORDINANCES.~~

~~Zoning Division~~

- ~~1. PROCESSES ZONE CHANGE REQUESTS.~~

~~ENGINEERING~~

- ~~1. Studies traffic patterns, makes projections, and designs roads & bridges for future construction.~~
- ~~2. Designs improvements on existing roads & bridges.~~
- ~~3. Studies and plans improvements on traffic control and road safety.~~

~~INSPECTION~~

- ~~1. Inspects construction in progress to ascertain compliance with basic plan and design.~~

~~SURVEYING~~

- ~~1. Surveys land for road construction and road improvement.~~

~~MAINTENANCE~~

- ~~1. Repairs and maintains all bridges owned by Multnomah County.~~

~~BRIDGE OPERATION~~

- ~~1. Operates draw bridges.~~
- ~~2. Controls traffic when bridge is open.~~

~~COUNTY FAIR~~

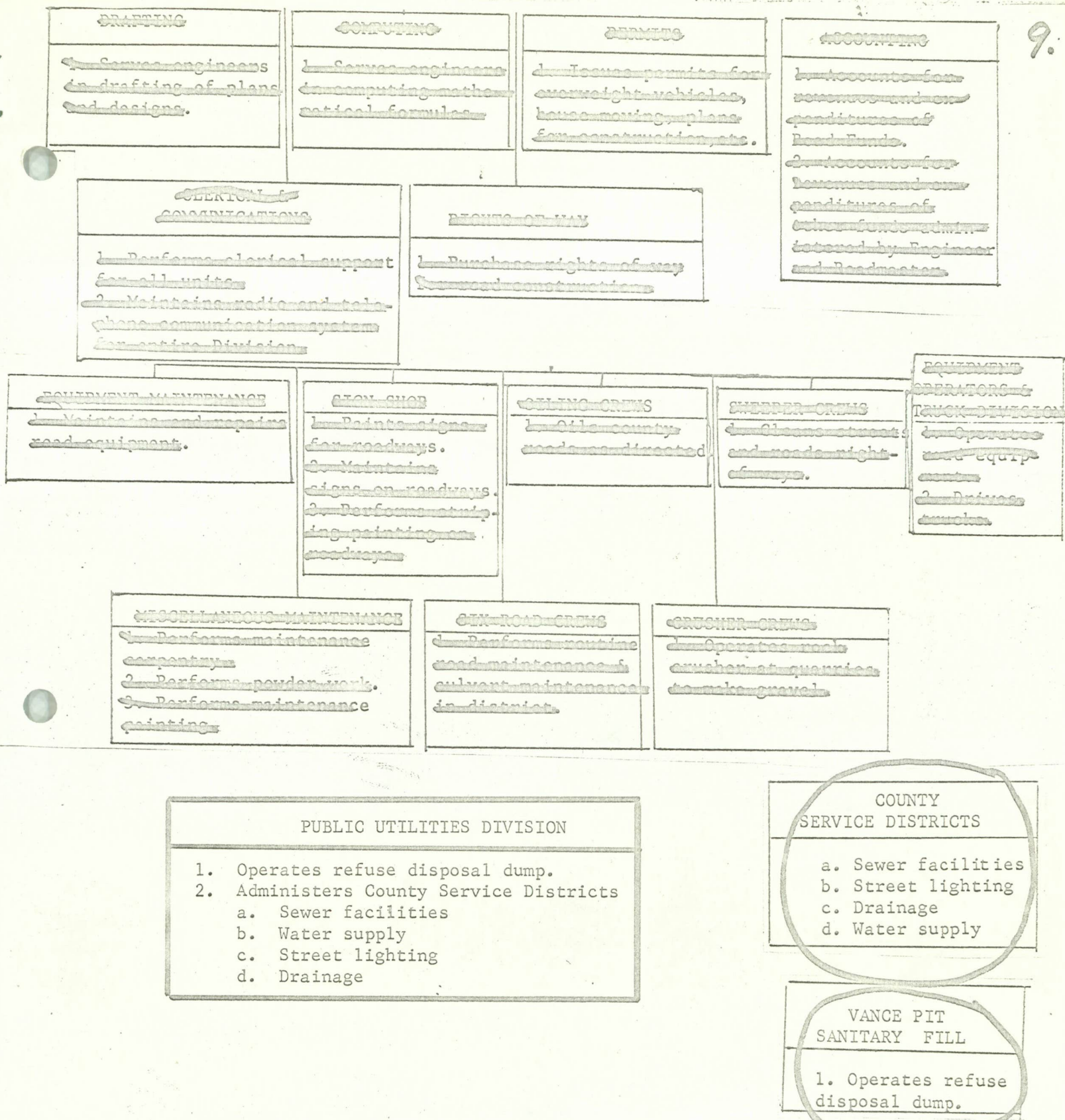
- ~~1. Maintain Fairgrounds and/or Exposition Complex.~~

~~DIVISION OF PARKS AND MEMORIALS FUNCTIONAL STATEMENT~~

- ~~1. Maintain and maintain all county-owned cemeteries.~~
- ~~2. Maintain and maintain all county-owned parks.~~
- ~~3. Supervise development of new parks.~~

~~SURVEYOR~~

- ~~1. Maintain records of all surveys made by himself and deputies and the county roadmasters.~~
- ~~2. Number his surveys and the surveys made by the county roadmaster progressively.~~
- ~~3. Maintain each record as required by laws.~~
- ~~4. Deliver copies of any surveys to any persons on court requiring same according to law.~~
- ~~5. Establish every survey by stakes according to law.~~
- ~~6. Make all surveys of legal subdivisions according to law.~~
- ~~7. Establish all corners of government surveys where the witness trees have been cut or have fallen down and where the bearing marks or blazes can be ascertained.~~
- ~~8. Establish upon order of the county court or board of county commissioners all corners of government surveys where all physical evidence is destroyed and cannot be found but where official government notes are available.~~
- ~~9. Make a complete record of all surveys at the expiration of his term.~~



The third division of the Department of Public Works is visualized as a Division of Public Utilities to perform those utility services for the citizens of Multnomah County outside the corporate limits of the City of Portland required in today's urban living. This would include the operation of Vance Pit Sanitary Fill (now accomplished by the County Engineer) plus the administration of the county service districts for the furnishing of sanitary services, water supply, street lighting, drainage, etc. to the citizens of Multnomah County outside the corporate limits of the cities within the county.

A proposed functional organization chart of a Department of Public Works encompassing three divisions is included on page 10.

DEPARTMENT OF PUBLIC WORKS

DIVISION OF
ROADS AND BRIDGES

1. Engineering and design of roads and bridges.
2. Construction and maintenance of roads and bridges.
3. Operation of rock quarries.
4. Surveying.

CONSTRUCTION AND
MAINTENANCE DIVISION

1. Enforcement of building code and zoning code.
2. Architecture and construction of county facilities.
3. Administration of Assessment District Improvement Fund.
4. Maintenance of county facilities and grounds.

PUBLIC UTILITIES
DIVISION

1. Operates refuse disposal dump.
2. Administration of Sewage Facilities Fund.
3. Administration of County Service Districts.
 - a. Sewer districts
 - b. Water districts
 - c. Street lighting
 - d. Drainage districts

DRAFT

REPORT
OF THE
SUB-COMMITTEE ON PUBLIC WORKS
TO THE
HOME RULE CHARTER COMMITTEE
OF
MULTNOMAH COUNTY, OREGON

John Sonderen-Chairman
John Elorriaga
George Birnie
Neva Elliott

Summary and Recommendations. The Sub-Committee on Public Works was charged by the Home Rule Charter Committee with exploring the existing functions of the Division of Roads and Bridges, Vance Pit Sanitary Fill, ^{Sewerage} ~~sewerage~~ facilities, and the County Surveyor. The sub-committee viewed its role as including all facets of county government, both those existing and those needed but not existing, pertaining to public works in the usual connotation of the words. Accordingly, the organizational alignment recommended will include some functions that are not presently accomplished.

In summary, the sub-committee recommends the creation of a Department of Public Works to include the present functions of the Division of Roads and Bridges; the County Surveyor; architecture and design of ^{Construction} ~~all~~ county facilities; enforcement of the zoning ordinance and the building codes; ^{other than custodial} ~~Maintenance~~ of county facilities and grounds; ^{other than custodial} operation of refuse disposals; and administration of ~~(any) existent or forthcoming~~ county service districts for providing water, ^{Sanitation} ~~sewage~~, drainage, ^{etc.} street lighting, etc.

BACKGROUND

Present Division of Roads and Bridges. ~~The present Division of Roads and Bridges accomplishes many tasks in fulfilling their functions ranging from studying traffic patterns and designing roads and bridges for future construction to oiling existing roads and painting signs.~~ All of the present operations are necessary and should be continued; however, ~~the sub-committee feels that these functions are no more than a part of the overall needs in the area of~~ public works.

County Surveyor. The County Surveyor is presently an elected official of county government charged with maintaining records of surveys made by himself and his deputies as well as surveys made by the Roadmaster. He is further required to make surveys of sub-divisions and perform other duties pertaining to surveying as indicated in the following chart.

SURVEYOR
<ol style="list-style-type: none">1. Maintain records of all surveys made by himself and deputies, and the County Roadmaster.2. Number his surveys and the surveys made by the County Roadmaster progressively.3. Maintain each record as required by law.4. Deliver copies of any surveys to any persons or court requiring same according to law.5. Establish every survey by stakes according to law.6. Make all surveys of legal sub-divisions according to law.7. Establish all corners of government surveys where the witness trees have been cut or have fallen down and where the bearing marks or blazes can be ascertained.8. Establish upon order of the county court or board of county commissioners all corners of government surveys where all physical evidence is destroyed and cannot be found but where official government notes are available.9. Make a complete record of all surveys at the expiration of his term.

Recommendation. Since the Division of Roads and Bridges has a surveying section and since the members can see no reason whatsoever for the selection of a surveyor on a partisan basis, the sub-committee recommends the creation of a Division of Roads and Bridges in the Department of Public Works to perform the following general functions.

DIVISION OF ROADS & BRIDGES
<ol style="list-style-type: none">1. Engineering and design of roads and bridges.2. Construction and maintenance of roads and bridges.3. Operation of rock quarries.4. Surveying.

Building, Construction, and Maintenance. The Sub-Committee on Public Services has recommended that the maintenance functions of the parks, cemeteries, and county fair be accomplished by a public works department. This recommendation has considerable merit in combining like functions for economy, however, this sub-committee would recommend that if this function is accomplished by the Public Works Department, it should be done on a scheduled basis and consist of maintenance only without the Public Works Department being involved in the operations of these facilities other than service to them.

A second recommendation of the Sub-Committee on Public Services is that of moving the enforcement of the building code and the zoning ordinance to a public works department. This sub-committee concurs but recommends that consideration be given to transferring the enforcement of the plumbing code and any other forthcoming building and construction codes to this department as well. We can see no reason for the enforcement of the plumbing code being administered by the Department of Medical Services other than the traditional placement of this function in a health agency.

The sub-committee further feels that all architecture, design, and construction (or supervision of construction) should be accomplished by the Department of Public Works. Accordingly, a Division of Construction and Maintenance is recommended to encompass the foregoing as indicated in the following functional chart.

CONSTRUCTION AND MAINTENANCE
1. Enforcement functions of building and zoning codes.
2. Performs architectural design and construction of county facilities.
3. Administers Assessment District Improvement Fund.
4. Maintains county facilities and grounds.

Public Utilities. Multnomah County currently provides some public utilities (in their broadest sense) in the operation of the Vance Pit Sanitary Fill, the administration of two sewer districts, etc. Depending in large measure upon forthcoming findings and recommendations of the Sub-Committee on Special Service Districts and the desires of the people in the unincorporated areas, the county may well find itself more heavily involved in urban services to constituents. The formation of County Service Districts is currently authorized for sewerage, drainage, and street lighting; accordingly, a Division of Public Utilities within the Department of Public Works is recommended to fulfill present functions and operate as a vehicle for inclusion of other public utility functions authorized either by charter or by legislation as follows.

PUBLIC UTILITIES DIVISION	
1.	Operates refuse disposal dump.
2.	Administers County Service Districts.
	a. Sewer facilities
	b. Water supply
	c. Street lighting
	d. Drainage

Conclusions. To facilitate an organization to provide the public works of Multnomah County and to coordinate these activities, personnel, and equipment, this sub-committee recommends a Department of Public Works under the direction of an appointed Registered Professional Engineer as indicated in the following functional organization chart.

DEPARTMENT OF PUBLIC WORKS

DIVISION OF
ROADS & BRIDGES

1. Engineering and design of roads and bridges.
2. Construction and maintenance of roads and bridges.
3. Operation of rock quarries.
4. Surveying.

CONSTRUCTION AND
MAINTENANCE DIVISION

1. Enforcement of building code^s and zoning code.
2. *Design* Architecture and construction of county facilities.
3. Administration of Assessment District Improvement Fund.
4. Maintenance of county facilities and grounds, *other than custodial*

PUBLIC UTILITIES
DIVISION

- Establs Op of Sanitary*
1. *Operates* refuse disposal *dump. facilities. Sewerage*
 2. Administration of Sewage Facilities Fund.
 3. Administration of County Service Districts.
 - a. Sewer districts
 - b. Water districts
 - c. Street lighting
 - d. Drainage districts.