



1/4 CORNER COMMON TO SECTION 25, T.1N.  
R.1E. BEING THE 1/4 CORNER OF SECTION 25,  
T.1N. R.1E. CONCRETE POST WITH 4" BRASS DISC,  
DOWN 0.5' IN MONUMENT BOX.  
B.T. BOOK E, PAGE 498

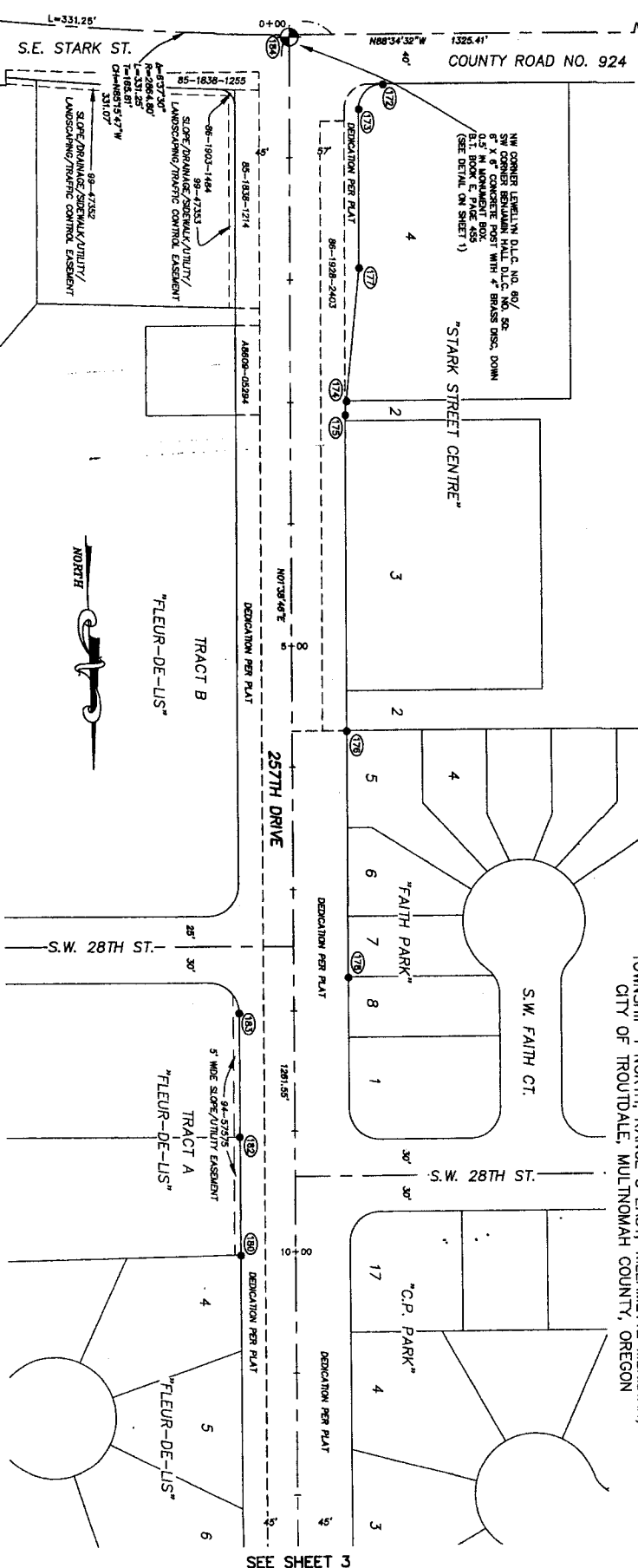
NW CORNER L&L IN D.L.C. NO. 80/  
SW CORNER BEAUMAIN HALL D.L.C. NO. 96  
6" X 6" CONCRETE POST WITH 4" BRASS DISC, DOWN  
0.5' IN MONUMENT BOX.  
B.T. BOOK E, PAGE 498  
(SEE DETAIL ON SHEET 1)

# RECORD OF SURVEY

257th DRIVE - COUNTY ROAD NO. 4931  
SE STARK STREET TO COLUMBIA RIVER HWY.

SITUATED IN THE WEST 1/2 OF SECTION 25,  
AND THE EAST 1/2 OF SECTION 35,  
TOWNSHIP 1 NORTH, RANGE 3 EAST, WILLAMETTE MERIDIAN,  
CITY OF TROUDALE, MULTNOMAH COUNTY, OREGON

MULTNOMAH COUNTY  
SURVEY RECORDS  
FILED JUNE 17, 2004  
59209  
REGISTER NUMBER



SEE SHEET 3

**257TH DRIVE MONUMENT TABLE**

POINT NUMBER	STATION	OFFSET	MONUMENT DESCRIPTION	ORIGIN
164	0+00	0.00	FOUND CONCRETE POST WITH 4-1/4" BRASS DISC	B.T. BOOK E, PAGE 498
174	0+30.86	76.86' L	FOUND BRASS SCREW WITH 3/4" BRASS WASHER MARKED "TIG, INC"	STARK STREET CENTRE
175	0+38.88	87.88' L	FOUND BRASS SCREW WITH 3/4" BRASS WASHER MARKED "TIG, INC"	STARK STREET CENTRE
176	0+48.88	97.88' L	FOUND BRASS SCREW WITH 3/4" BRASS WASHER MARKED "TIG, INC"	STARK STREET CENTRE
177	0+58.88	107.88' L	FOUND BRASS SCREW WITH 3/4" BRASS WASHER MARKED "TIG, INC"	STARK STREET CENTRE
178	1+08.88	117.88' L	FOUND BRASS SCREW WITH 3/4" BRASS WASHER MARKED "TIG, INC"	STARK STREET CENTRE
179	1+18.88	127.88' L	FOUND BRASS SCREW WITH 3/4" BRASS WASHER MARKED "TIG, INC"	STARK STREET CENTRE
180	1+28.88	137.88' L	FOUND BRASS SCREW WITH 3/4" BRASS WASHER MARKED "TIG, INC"	STARK STREET CENTRE
181	1+38.88	147.88' L	FOUND BRASS SCREW WITH 3/4" BRASS WASHER MARKED "TIG, INC"	STARK STREET CENTRE
182	1+48.88	157.88' L	FOUND BRASS SCREW WITH 3/4" BRASS WASHER MARKED "TIG, INC"	STARK STREET CENTRE
183	1+58.88	167.88' L	FOUND BRASS SCREW WITH 3/4" BRASS WASHER MARKED "TIG, INC"	STARK STREET CENTRE
184	2+08.88	177.88' L	FOUND BRASS SCREW WITH 3/4" BRASS WASHER MARKED "TIG, INC"	STARK STREET CENTRE
185	2+18.88	187.88' L	FOUND BRASS SCREW WITH 3/4" BRASS WASHER MARKED "TIG, INC"	STARK STREET CENTRE
186	2+28.88	197.88' L	FOUND BRASS SCREW WITH 3/4" BRASS WASHER MARKED "TIG, INC"	STARK STREET CENTRE
187	2+38.88	207.88' L	FOUND BRASS SCREW WITH 3/4" BRASS WASHER MARKED "TIG, INC"	STARK STREET CENTRE
188	2+48.88	217.88' L	FOUND BRASS SCREW WITH 3/4" BRASS WASHER MARKED "TIG, INC"	STARK STREET CENTRE
189	2+58.88	227.88' L	FOUND BRASS SCREW WITH 3/4" BRASS WASHER MARKED "TIG, INC"	STARK STREET CENTRE
190	3+08.88	237.88' L	FOUND BRASS SCREW WITH 3/4" BRASS WASHER MARKED "TIG, INC"	STARK STREET CENTRE

## LEGEND

- FOUND MULTNOMAH COUNTY PUBLIC LAND CORNER MONUMENT AS DESCRIBED.
- FOUND MONUMENT AS NOTED IN MONUMENT TABLES.
- MONUMENT IDENTIFIER, SEE MONUMENT TABLES.
- SN SURVEY NUMBER, MULTNOMAH COUNTY SURVEY RECORDS (MSR).
- YPC YELLOW PLASTIC CAP
- XX-XXXX-XXXX YEAR-BOOK-PAGE, MULTNOMAH COUNTY DEED RECORDS (MCDR)
- XXXX-XXXX DOCUMENT NO. YEAR-NUMBER (MCDR)
- XXXX-XXXX STIPULATED FINAL ADJUDGMENT, MULTNOMAH COUNTY CIRCUIT COURT

**MULTNOMAH COUNTY**  
DEPARTMENT OF BUSINESS AND COMMUNITY SERVICES  
1600 S.E. 180th Ave. PORTLAND, OR 97233

257th DRIVE, COUNTY ROAD NO. 4931

ROBERT A. HOVDEN, P.L.S. COUNTY SURVEYOR

Drafted: KSH Checked: SHG/RAH Date: 2/28/2004 Scale: 1" = 80'

REGISTERED PROFESSIONAL LAND SURVEYOR  
*Robert A. Hovden*  
OREGON  
ROBERT A. HOVDEN  
594  
RENEWAL DATE: 6/30/2005  
I CERTIFY THAT THIS SURVEY WAS PREPARED USING THE PRODUCT CIBOLA ON CONTINENTAL FROM FOLIO 157111.

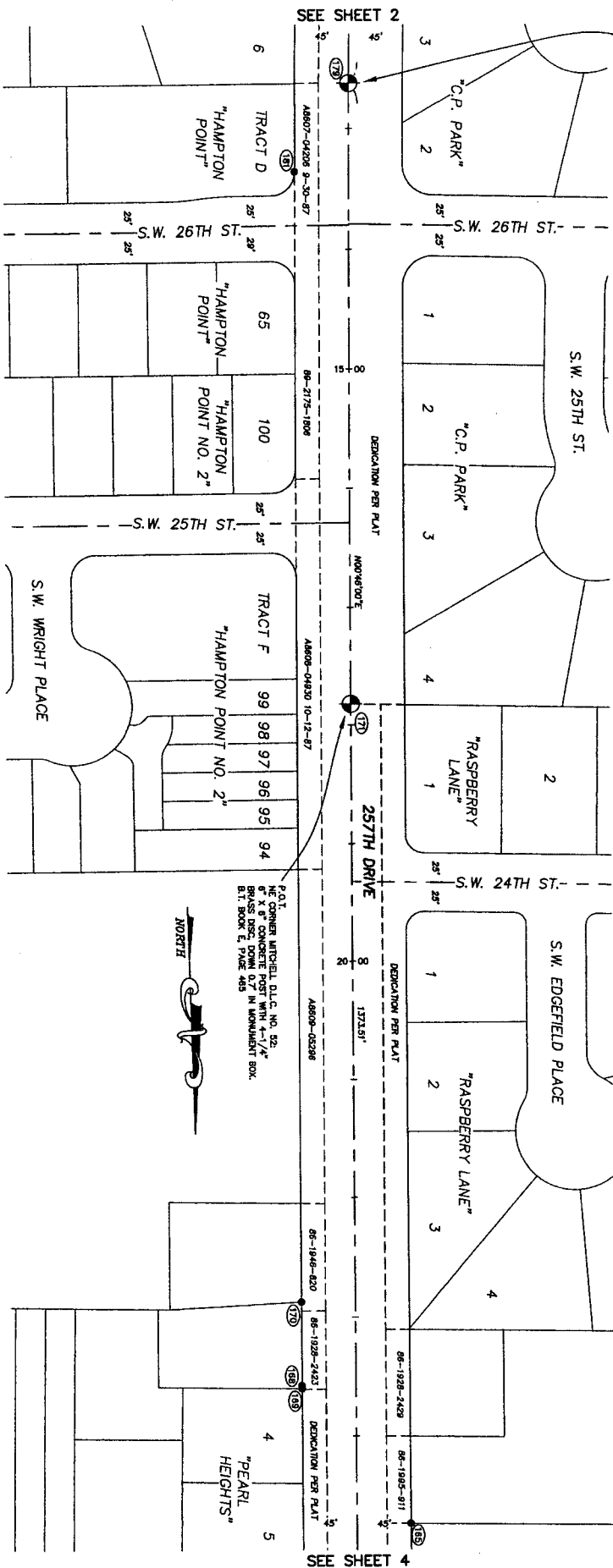
59209

59209

59209

59209

WESTERN NW CORNER BENJAMIN HALL D.L.C. NO. 50:  
DOWN 0.4' IN MONUMENT BOX.  
B.T. BOOK E. PAGE 464



**RECORD OF SURVEY**  
**257th Drive - County Road No. 4931**  
 SITUATED IN THE WEST 1/2 OF SECTION 25,  
 SE STARK STREET TO COLUMBIA RIVER HWY.  
 THE SOUTHEAST 1/4 OF SECTION 26,  
 AND THE EAST 1/2 OF SECTION 35,  
 TOWNSHIP 1 NORTH, RANGE 3 EAST, WILLAMETTE MERIDIAN,  
 CITY OF TROUDALE, MULTNOMAH COUNTY, OREGON

MULTNOMAH COUNTY  
 SURVEY RECORDS  
 DATE: JUNE 17, 2004  
 FILE: 59209  
 REGISTER NUMBER

## 257TH DRIVE MONUMENT TABLE

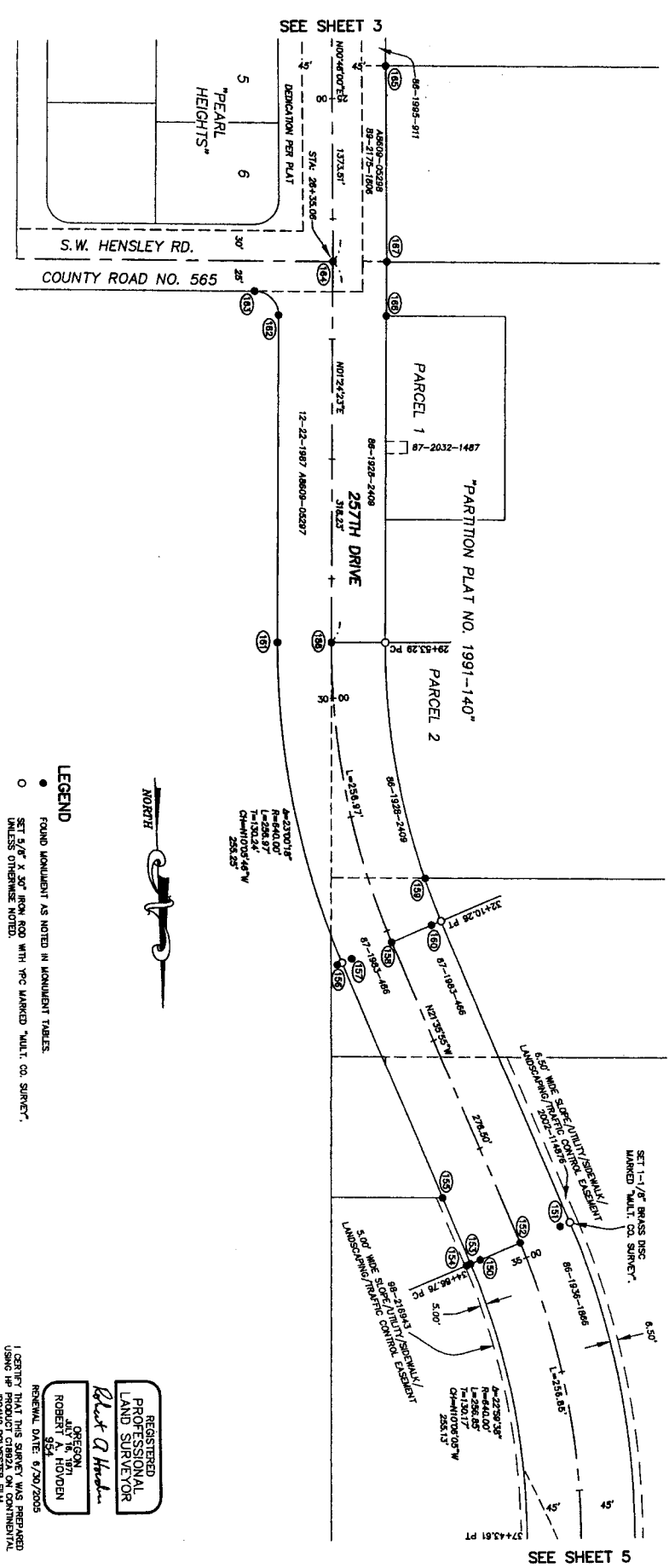
POINT NUMBER	STATION	OFFSET	MONUMENT DESCRIPTION	OWNER
179	12+81.55	0.00	SEE DESCRIPTION ABOVE	B.T. E. 464
178	13+35.14	45.13' RT.	5/8" IRON ROD, FLUSH	HAMPTON POINT
177	14+20.04	0.00	SEE DESCRIPTION ABOVE	B.T. E. 464
176	15+24.31	45.07' RT.	5/8" IRON ROD, FLUSH	HAMPTON POINT
175	16+18.70	0.00	SEE DESCRIPTION ABOVE	B.T. E. 464
174	17+13.15	44.87' LT.	5/8" IRON ROD, FLUSH	HAMPTON POINT
173	18+07.54	0.00	SEE DESCRIPTION ABOVE	B.T. E. 464
172	19+01.93	44.87' RT.	5/8" IRON ROD, FLUSH	HAMPTON POINT
171	20+06.32	0.00	SEE DESCRIPTION ABOVE	B.T. E. 464
170	21+00.71	44.87' LT.	5/8" IRON ROD, FLUSH	HAMPTON POINT
169	22+05.10	0.00	SEE DESCRIPTION ABOVE	B.T. E. 464
168	23+09.49	44.87' RT.	5/8" IRON ROD, FLUSH	HAMPTON POINT
167	24+13.88	0.00	SEE DESCRIPTION ABOVE	B.T. E. 464
166	25+18.27	44.87' LT.	5/8" IRON ROD WITH BPC MARKED "CENTRALINK CONCEPTS, INC." FLUSH	SH 52445
165	26+22.66	0.00	SEE DESCRIPTION ABOVE	B.T. E. 464
164	27+27.05	44.87' RT.	5/8" IRON ROD, FLUSH	HAMPTON POINT
163	28+31.44	0.00	SEE DESCRIPTION ABOVE	B.T. E. 464
162	29+35.83	44.87' LT.	5/8" IRON ROD, FLUSH	HAMPTON POINT
161	30+40.22	0.00	SEE DESCRIPTION ABOVE	B.T. E. 464
160	31+44.61	44.87' RT.	5/8" IRON ROD, FLUSH	HAMPTON POINT
159	32+48.99	0.00	SEE DESCRIPTION ABOVE	B.T. E. 464
158	33+53.38	44.87' LT.	5/8" IRON ROD, FLUSH	HAMPTON POINT
157	34+57.77	0.00	SEE DESCRIPTION ABOVE	B.T. E. 464
156	35+62.16	44.87' RT.	5/8" IRON ROD, FLUSH	HAMPTON POINT
155	36+66.55	0.00	SEE DESCRIPTION ABOVE	B.T. E. 464
154	37+70.94	44.87' LT.	5/8" IRON ROD, FLUSH	HAMPTON POINT
153	38+75.33	0.00	SEE DESCRIPTION ABOVE	B.T. E. 464
152	39+79.72	44.87' RT.	5/8" IRON ROD, FLUSH	HAMPTON POINT
151	40+84.11	0.00	SEE DESCRIPTION ABOVE	B.T. E. 464
150	41+88.50	44.87' LT.	5/8" IRON ROD, FLUSH	HAMPTON POINT
149	42+92.89	0.00	SEE DESCRIPTION ABOVE	B.T. E. 464
148	43+97.28	44.87' RT.	5/8" IRON ROD, FLUSH	HAMPTON POINT
147	44+101.67	0.00	SEE DESCRIPTION ABOVE	B.T. E. 464
146	45+145.56	44.87' LT.	5/8" IRON ROD, FLUSH	HAMPTON POINT
145	46+189.45	0.00	SEE DESCRIPTION ABOVE	B.T. E. 464
144	47+233.34	44.87' RT.	5/8" IRON ROD, FLUSH	HAMPTON POINT
143	48+277.23	0.00	SEE DESCRIPTION ABOVE	B.T. E. 464
142	49+321.12	44.87' LT.	5/8" IRON ROD, FLUSH	HAMPTON POINT
141	50+365.01	0.00	SEE DESCRIPTION ABOVE	B.T. E. 464
140	51+408.90	44.87' RT.	5/8" IRON ROD, FLUSH	HAMPTON POINT
139	52+452.79	0.00	SEE DESCRIPTION ABOVE	B.T. E. 464
138	53+496.68	44.87' LT.	5/8" IRON ROD, FLUSH	HAMPTON POINT
137	54+540.57	0.00	SEE DESCRIPTION ABOVE	B.T. E. 464
136	55+584.46	44.87' RT.	5/8" IRON ROD, FLUSH	HAMPTON POINT
135	56+628.35	0.00	SEE DESCRIPTION ABOVE	B.T. E. 464
134	57+672.24	44.87' LT.	5/8" IRON ROD, FLUSH	HAMPTON POINT
133	58+716.13	0.00	SEE DESCRIPTION ABOVE	B.T. E. 464
132	59+760.02	44.87' RT.	5/8" IRON ROD, FLUSH	HAMPTON POINT
131	60+803.91	0.00	SEE DESCRIPTION ABOVE	B.T. E. 464
130	61+847.80	44.87' LT.	5/8" IRON ROD, FLUSH	HAMPTON POINT
129	62+891.69	0.00	SEE DESCRIPTION ABOVE	B.T. E. 464
128	63+935.58	44.87' RT.	5/8" IRON ROD, FLUSH	HAMPTON POINT
127	64+979.47	0.00	SEE DESCRIPTION ABOVE	B.T. E. 464
126	65+1023.36	44.87' LT.	5/8" IRON ROD, FLUSH	HAMPTON POINT
125	66+1467.25	0.00	SEE DESCRIPTION ABOVE	B.T. E. 464
124	67+1911.14	44.87' RT.	5/8" IRON ROD, FLUSH	HAMPTON POINT
123	68+2355.03	0.00	SEE DESCRIPTION ABOVE	B.T. E. 464
122	69+2798.92	44.87' LT.	5/8" IRON ROD, FLUSH	HAMPTON POINT
121	70+3242.81	0.00	SEE DESCRIPTION ABOVE	B.T. E. 464
120	71+3686.70	44.87' RT.	5/8" IRON ROD, FLUSH	HAMPTON POINT
119	72+4130.59	0.00	SEE DESCRIPTION ABOVE	B.T. E. 464
118	73+4574.48	44.87' LT.	5/8" IRON ROD, FLUSH	HAMPTON POINT
117	74+5018.37	0.00	SEE DESCRIPTION ABOVE	B.T. E. 464
116	75+5462.26	44.87' RT.	5/8" IRON ROD, FLUSH	HAMPTON POINT
115	76+5906.15	0.00	SEE DESCRIPTION ABOVE	B.T. E. 464
114	77+6350.04	44.87' LT.	5/8" IRON ROD, FLUSH	HAMPTON POINT
113	78+6793.93	0.00	SEE DESCRIPTION ABOVE	B.T. E. 464
112	79+7237.82	44.87' RT.	5/8" IRON ROD, FLUSH	HAMPTON POINT
111	80+7681.71	0.00	SEE DESCRIPTION ABOVE	B.T. E. 464
110	81+8125.60	44.87' LT.	5/8" IRON ROD, FLUSH	HAMPTON POINT
109	82+8569.49	0.00	SEE DESCRIPTION ABOVE	B.T. E. 464
108	83+9013.38	44.87' RT.	5/8" IRON ROD, FLUSH	HAMPTON POINT
107	84+9457.27	0.00	SEE DESCRIPTION ABOVE	B.T. E. 464
106	85+9901.16	44.87' LT.	5/8" IRON ROD, FLUSH	HAMPTON POINT
105	86+10345.05	0.00	SEE DESCRIPTION ABOVE	B.T. E. 464
104	87+10788.94	44.87' RT.	5/8" IRON ROD, FLUSH	HAMPTON POINT
103	88+11232.83	0.00	SEE DESCRIPTION ABOVE	B.T. E. 464
102	89+11676.72	44.87' LT.	5/8" IRON ROD, FLUSH	HAMPTON POINT
101	90+12120.61	0.00	SEE DESCRIPTION ABOVE	B.T. E. 464
100	91+12564.50	44.87' RT.	5/8" IRON ROD, FLUSH	HAMPTON POINT
99	92+13008.39	0.00	SEE DESCRIPTION ABOVE	B.T. E. 464
98	93+13452.28	44.87' LT.	5/8" IRON ROD, FLUSH	HAMPTON POINT
97	94+13896.17	0.00	SEE DESCRIPTION ABOVE	B.T. E. 464
96	95+14340.06	44.87' RT.	5/8" IRON ROD, FLUSH	HAMPTON POINT
95	96+14783.95	0.00	SEE DESCRIPTION ABOVE	B.T. E. 464
94	97+15227.84	44.87' LT.	5/8" IRON ROD, FLUSH	HAMPTON POINT
93	98+15671.73	0.00	SEE DESCRIPTION ABOVE	B.T. E. 464
92	99+16115.62	44.87' RT.	5/8" IRON ROD, FLUSH	HAMPTON POINT
91	100+16559.51	0.00	SEE DESCRIPTION ABOVE	B.T. E. 464
90	101+17003.40	44.87' LT.	5/8" IRON ROD, FLUSH	HAMPTON POINT
89	102+17447.29	0.00	SEE DESCRIPTION ABOVE	B.T. E. 464
88	103+17891.18	44.87' RT.	5/8" IRON ROD, FLUSH	HAMPTON POINT
87	104+18335.07	0.00	SEE DESCRIPTION ABOVE	B.T. E. 464
86	105+18778.96	44.87' LT.	5/8" IRON ROD, FLUSH	HAMPTON POINT
85	106+19222.85	0.00	SEE DESCRIPTION ABOVE	B.T. E. 464
84	107+19666.74	44.87' RT.	5/8" IRON ROD, FLUSH	HAMPTON POINT
83	108+20110.63	0.00	SEE DESCRIPTION ABOVE	B.T. E. 464
82	109+20554.52	44.87' LT.	5/8" IRON ROD, FLUSH	HAMPTON POINT
81	110+20998.41	0.00	SEE DESCRIPTION ABOVE	B.T. E. 464
80	111+21442.30	44.87' RT.	5/8" IRON ROD, FLUSH	HAMPTON POINT
79	112+21886.19	0.00	SEE DESCRIPTION ABOVE	B.T. E. 464
78	113+22330.08	44.87' LT.	5/8" IRON ROD, FLUSH	HAMPTON POINT
77	114+22773.97	0.00	SEE DESCRIPTION ABOVE	B.T. E. 464
76	115+23217.86	44.87' RT.	5/8" IRON ROD, FLUSH	HAMPTON POINT
75	116+23661.75	0.00	SEE DESCRIPTION ABOVE	B.T. E. 464
74	117+24105.64	44.87' LT.	5/8" IRON ROD, FLUSH	HAMPTON POINT
73	118+24549.53	0.00	SEE DESCRIPTION ABOVE	B.T. E. 464
72	119+24993.42	44.87' RT.	5/8" IRON ROD, FLUSH	HAMPTON POINT
71	120+25437.31	0.00	SEE DESCRIPTION ABOVE	B.T. E. 464
70	121+25881.20	44.87' LT.	5/8" IRON ROD, FLUSH	HAMPTON POINT
69	122+26325.09	0.00	SEE DESCRIPTION ABOVE	B.T. E. 464
68	123+26768.98	44.87' RT.	5/8" IRON ROD, FLUSH	HAMPTON POINT
67	124+27212.87	0.00	SEE DESCRIPTION ABOVE	B.T. E. 464
66	125+27656.76	44.87' LT.	5/8" IRON ROD, FLUSH	HAMPTON POINT
65	126+28100.65	0.00	SEE DESCRIPTION ABOVE	B.T. E. 464
64	127+28544.54	44.87' RT.	5/8" IRON ROD, FLUSH	HAMPTON POINT
63	128+28988.43	0.00	SEE DESCRIPTION ABOVE	B.T. E. 464
62	129+29432.32	44.87' LT.	5/8" IRON ROD, FLUSH	HAMPTON POINT
61	130+29876.21	0.00	SEE DESCRIPTION ABOVE	B.T. E. 464
60	131+30320.10	44.87' RT.	5/8" IRON ROD, FLUSH	HAMPTON POINT
59	132+30763.99	0.00	SEE DESCRIPTION ABOVE	B.T. E. 464
58	133+31207.88	44.87' LT.	5/8" IRON ROD, FLUSH	HAMPTON POINT
57	134+31651.77	0.00	SEE DESCRIPTION ABOVE	B.T. E. 464
56	135+32095.66	44.87' RT.	5/8" IRON ROD, FLUSH	HAMPTON POINT
55	136+32539.55	0.00	SEE DESCRIPTION ABOVE	B.T. E. 464
54	137+32983.44	44.87' LT.	5/8" IRON ROD, FLUSH	HAMPTON POINT
53	138+33427.33	0.00	SEE DESCRIPTION ABOVE	B.T. E. 464
52	139+33871.22	44.87' RT.	5/8" IRON ROD, FLUSH	HAMPTON POINT
51	140+34315.11	0.00	SEE DESCRIPTION ABOVE	B.T. E. 464
50	141+34759.00	44.87' LT.	5/8" IRON ROD, FLUSH	HAMPTON POINT
49	142+35202.89	0.00	SEE DESCRIPTION ABOVE	B.T. E. 464
48	143+35646.78	44.87' RT.	5/8" IRON ROD, FLUSH	HAMPTON POINT
47	144+36090.67	0.00	SEE DESCRIPTION ABOVE	B.T. E. 464
46	145+36534.56	44.87' LT.	5/8" IRON ROD, FLUSH	HAMPTON POINT
45	146+36978.45	0.00	SEE DESCRIPTION ABOVE	B.T. E. 464
44	147+37422.34	44.87' RT.	5/8" IRON ROD, FLUSH	HAMPTON POINT
43	148+37866.23	0.00	SEE DESCRIPTION ABOVE	B.T. E. 464
42	149+38310.12	44.87' LT.	5/8" IRON ROD, FLUSH	HAMPTON POINT
41	150+38754.01	0.00	SEE DESCRIPTION ABOVE	B.T. E. 464
40	151+39197.90	44.87' RT.	5/8" IRON ROD, FLUSH	HAMPTON POINT
39	152+39641.79	0.00	SEE DESCRIPTION ABOVE	B.T. E. 464
38	153+40085.68	44.87' LT.	5/8" IRON ROD, FLUSH	HAMPTON POINT
37	154+40529.57	0.00	SEE DESCRIPTION ABOVE	B.T. E. 464
36	155+40973.46	44.87' RT.	5/8" IRON ROD, FLUSH	HAMPTON POINT
35	156+41417.35	0.00	SEE DESCRIPTION ABOVE	B.T. E. 464
34	157+41861.24	44.87' LT.	5/8" IRON ROD, FLUSH	HAMPTON POINT
33	158+42305.13	0.00	SEE DESCRIPTION ABOVE	B.T. E. 464
32	159+42749.02	44.87' RT.	5/8" IRON ROD, FLUSH	HAMPTON POINT
31	160+43192.91	0.00	SEE DESCRIPTION ABOVE	B.T. E. 464
30	161+43636.80	44.87' LT.	5/8" IRON ROD, FLUSH	HAMPTON POINT
29	162+44080.69	0.00	SEE DESCRIPTION ABOVE	B.T. E. 464
28	163+44524.58	44.87' RT.	5/8" IRON ROD, FLUSH	HAMPTON POINT
27	164+44968.47	0.00	SEE DESCRIPTION ABOVE	B.T. E. 464
26	165+45412.36	44.87' LT.	5/8" IRON ROD, FLUSH	HAMPTON POINT
25	166+45856.25	0.00	SEE DESCRIPTION ABOVE	B.T. E. 464
24	167+46299.14	44.87' RT.	5/8" IRON ROD, FLUSH	HAMPTON POINT
23	168+46743.03	0.00	SEE DESCRIPTION ABOVE	B.T. E. 464
22	169+47186.92	44.87' LT.	5/8" IRON ROD, FLUSH	HAMPTON POINT
21	170+47630.81	0.00	SEE DESCRIPTION ABOVE	B.T. E. 464
20	171+48074.70	44.87' RT.	5/8" IRON ROD, FLUSH	HAMPTON POINT
19	172+48518.59	0.00	SEE DESCRIPTION ABOVE	B.T. E. 464
18	173+48962.48	44.87' LT.	5/8" IRON ROD, FLUSH	HAMPTON POINT
17	174+49406.37	0.00	SEE DESCRIPTION ABOVE	B.T. E. 464
16	175+49850.26	44.87' RT.	5/8" IRON ROD, FLUSH	HAMPTON POINT
15	176+50294.15	0.00	SEE DESCRIPTION ABOVE	B.T. E. 464
14	177+50738.04	44.87' LT.	5/8" IRON ROD, FLUSH	HAMPTON POINT
13	178+51181.93	0.00	SEE DESCRIPTION ABOVE	B.T. E. 464
12	179+51625.82	44.87' RT.	5/8" IRON ROD, FLUSH	HAMPTON POINT
11	180+52069.71	0.00	SEE DESCRIPTION ABOVE	B.T. E. 464
10	181+52513.60	44.87' LT.	5/8" IRON ROD, FLUSH	HAMPTON POINT
9	182+52957.49	0.00	SEE DESCRIPTION ABOVE	B.T. E. 464
8	183+53401.38	44.87' RT.	5/8" IRON ROD, FLUSH	HAMPTON POINT
7	184+53845.27	0.00	SEE DESCRIPTION ABOVE	B.T. E. 464
6	185+54289.16	44.87' LT.	5/8" IRON ROD, FLUSH	HAMPTON POINT
5	186+54733.05	0.00	SEE DESCRIPTION ABOVE	B.T. E. 464
4	187+55176.94	44.87' RT.	5/8" IRON ROD, FLUSH	HAMPTON POINT
3	188+55620.83	0.00	SEE DESCRIPTION ABOVE	B.T. E. 464
2	189+56064.72	44.87' LT.	5/8" IRON ROD, FLUSH	HAMPTON POINT
1	190+56508.61	0.00	SEE DESCRIPTION ABOVE	B.T. E. 464

# 257TH DRIVE MONUMENT TABLE

POINT NUMBER	STATION	OFFSET	MONUMENT DESCRIPTION	ORIGIN
126	24+10.26	0.00	FOUND 1/2" IRON PIP DOWN 0.5' IN MONUMENT BOX	SN 52465
127	24+35.18	45.04	FOUND 5/8" IRON ROD WITH TPC MARKED "CENTRIFUGAL CONCRETE INC." FLUSH	SN 52465
128	24+59.44	45.07	FOUND 5/8" IRON ROD WITH TPC MARKED "CENTRIFUGAL CONCRETE INC." FLUSH	SN 52465
129	24+84.40	45.07	FOUND 5/8" IRON ROD WITH TPC MARKED "CENTRIFUGAL CONCRETE INC." FLUSH	SN 52465
130	24+109.36	45.07	FOUND 5/8" IRON ROD WITH TPC MARKED "CENTRIFUGAL CONCRETE INC." FLUSH	SN 52465
131	24+134.32	45.07	FOUND 5/8" IRON ROD WITH TPC MARKED "CENTRIFUGAL CONCRETE INC." FLUSH	SN 52465
132	24+159.28	45.07	FOUND 5/8" IRON ROD WITH TPC MARKED "CENTRIFUGAL CONCRETE INC." FLUSH	SN 52465
133	24+184.24	45.07	FOUND 5/8" IRON ROD WITH TPC MARKED "CENTRIFUGAL CONCRETE INC." FLUSH	SN 52465
134	24+209.20	45.07	FOUND 5/8" IRON ROD WITH TPC MARKED "CENTRIFUGAL CONCRETE INC." FLUSH	SN 52465
135	24+234.16	45.07	FOUND 5/8" IRON ROD WITH TPC MARKED "CENTRIFUGAL CONCRETE INC." FLUSH	SN 52465
136	24+259.12	45.07	FOUND 5/8" IRON ROD WITH TPC MARKED "CENTRIFUGAL CONCRETE INC." FLUSH	SN 52465
137	24+284.08	45.07	FOUND 5/8" IRON ROD WITH TPC MARKED "CENTRIFUGAL CONCRETE INC." FLUSH	SN 52465
138	24+309.04	45.07	FOUND 5/8" IRON ROD WITH TPC MARKED "CENTRIFUGAL CONCRETE INC." FLUSH	SN 52465
139	24+334.00	45.07	FOUND 5/8" IRON ROD WITH TPC MARKED "CENTRIFUGAL CONCRETE INC." FLUSH	SN 52465
140	24+358.96	45.07	FOUND 5/8" IRON ROD WITH TPC MARKED "CENTRIFUGAL CONCRETE INC." FLUSH	SN 52465
141	24+383.92	45.07	FOUND 5/8" IRON ROD WITH TPC MARKED "CENTRIFUGAL CONCRETE INC." FLUSH	SN 52465
142	24+408.88	45.07	FOUND 5/8" IRON ROD WITH TPC MARKED "CENTRIFUGAL CONCRETE INC." FLUSH	SN 52465
143	24+433.84	45.07	FOUND 5/8" IRON ROD WITH TPC MARKED "CENTRIFUGAL CONCRETE INC." FLUSH	SN 52465
144	24+458.80	45.07	FOUND 5/8" IRON ROD WITH TPC MARKED "CENTRIFUGAL CONCRETE INC." FLUSH	SN 52465
145	24+483.76	45.07	FOUND 5/8" IRON ROD WITH TPC MARKED "CENTRIFUGAL CONCRETE INC." FLUSH	SN 52465
146	24+508.72	45.07	FOUND 5/8" IRON ROD WITH TPC MARKED "CENTRIFUGAL CONCRETE INC." FLUSH	SN 52465
147	24+533.68	45.07	FOUND 5/8" IRON ROD WITH TPC MARKED "CENTRIFUGAL CONCRETE INC." FLUSH	SN 52465
148	24+558.64	45.07	FOUND 5/8" IRON ROD WITH TPC MARKED "CENTRIFUGAL CONCRETE INC." FLUSH	SN 52465
149	24+583.60	45.07	FOUND 5/8" IRON ROD WITH TPC MARKED "CENTRIFUGAL CONCRETE INC." FLUSH	SN 52465
150	24+608.56	45.07	FOUND 5/8" IRON ROD WITH TPC MARKED "CENTRIFUGAL CONCRETE INC." FLUSH	SN 52465
151	24+633.52	45.07	FOUND 5/8" IRON ROD WITH TPC MARKED "CENTRIFUGAL CONCRETE INC." FLUSH	SN 52465
152	24+658.48	45.07	FOUND 5/8" IRON ROD WITH TPC MARKED "CENTRIFUGAL CONCRETE INC." FLUSH	SN 52465
153	24+683.44	45.07	FOUND 5/8" IRON ROD WITH TPC MARKED "CENTRIFUGAL CONCRETE INC." FLUSH	SN 52465
154	24+708.40	45.07	FOUND 5/8" IRON ROD WITH TPC MARKED "CENTRIFUGAL CONCRETE INC." FLUSH	SN 52465
155	24+733.36	45.07	FOUND 5/8" IRON ROD WITH TPC MARKED "CENTRIFUGAL CONCRETE INC." FLUSH	SN 52465
156	24+758.32	45.07	FOUND 5/8" IRON ROD WITH TPC MARKED "CENTRIFUGAL CONCRETE INC." FLUSH	SN 52465
157	24+783.28	45.07	FOUND 5/8" IRON ROD WITH TPC MARKED "CENTRIFUGAL CONCRETE INC." FLUSH	SN 52465
158	24+808.24	45.07	FOUND 5/8" IRON ROD WITH TPC MARKED "CENTRIFUGAL CONCRETE INC." FLUSH	SN 52465
159	24+833.20	45.07	FOUND 5/8" IRON ROD WITH TPC MARKED "CENTRIFUGAL CONCRETE INC." FLUSH	SN 52465
160	24+858.16	45.07	FOUND 5/8" IRON ROD WITH TPC MARKED "CENTRIFUGAL CONCRETE INC." FLUSH	SN 52465
161	24+883.12	45.07	FOUND 5/8" IRON ROD WITH TPC MARKED "CENTRIFUGAL CONCRETE INC." FLUSH	SN 52465
162	24+908.08	45.07	FOUND 5/8" IRON ROD WITH TPC MARKED "CENTRIFUGAL CONCRETE INC." FLUSH	SN 52465
163	24+933.04	45.07	FOUND 5/8" IRON ROD WITH TPC MARKED "CENTRIFUGAL CONCRETE INC." FLUSH	SN 52465
164	24+958.00	45.07	FOUND 5/8" IRON ROD WITH TPC MARKED "CENTRIFUGAL CONCRETE INC." FLUSH	SN 52465
165	24+982.96	45.07	FOUND 5/8" IRON ROD WITH TPC MARKED "CENTRIFUGAL CONCRETE INC." FLUSH	SN 52465
166	25+007.92	45.07	FOUND 5/8" IRON ROD WITH TPC MARKED "CENTRIFUGAL CONCRETE INC." FLUSH	SN 52465
167	25+032.88	45.07	FOUND 5/8" IRON ROD WITH TPC MARKED "CENTRIFUGAL CONCRETE INC." FLUSH	SN 52465
168	25+057.84	45.07	FOUND 5/8" IRON ROD WITH TPC MARKED "CENTRIFUGAL CONCRETE INC." FLUSH	SN 52465
169	25+082.80	45.07	FOUND 5/8" IRON ROD WITH TPC MARKED "CENTRIFUGAL CONCRETE INC." FLUSH	SN 52465
170	25+107.76	45.07	FOUND 5/8" IRON ROD WITH TPC MARKED "CENTRIFUGAL CONCRETE INC." FLUSH	SN 52465
171	25+132.72	45.07	FOUND 5/8" IRON ROD WITH TPC MARKED "CENTRIFUGAL CONCRETE INC." FLUSH	SN 52465
172	25+157.68	45.07	FOUND 5/8" IRON ROD WITH TPC MARKED "CENTRIFUGAL CONCRETE INC." FLUSH	SN 52465
173	25+182.64	45.07	FOUND 5/8" IRON ROD WITH TPC MARKED "CENTRIFUGAL CONCRETE INC." FLUSH	SN 52465
174	25+207.60	45.07	FOUND 5/8" IRON ROD WITH TPC MARKED "CENTRIFUGAL CONCRETE INC." FLUSH	SN 52465
175	25+232.56	45.07	FOUND 5/8" IRON ROD WITH TPC MARKED "CENTRIFUGAL CONCRETE INC." FLUSH	SN 52465
176	25+257.52	45.07	FOUND 5/8" IRON ROD WITH TPC MARKED "CENTRIFUGAL CONCRETE INC." FLUSH	SN 52465
177	25+282.48	45.07	FOUND 5/8" IRON ROD WITH TPC MARKED "CENTRIFUGAL CONCRETE INC." FLUSH	SN 52465
178	25+307.44	45.07	FOUND 5/8" IRON ROD WITH TPC MARKED "CENTRIFUGAL CONCRETE INC." FLUSH	SN 52465
179	25+332.40	45.07	FOUND 5/8" IRON ROD WITH TPC MARKED "CENTRIFUGAL CONCRETE INC." FLUSH	SN 52465
180	25+357.36	45.07	FOUND 5/8" IRON ROD WITH TPC MARKED "CENTRIFUGAL CONCRETE INC." FLUSH	SN 52465
181	25+382.32	45.07	FOUND 5/8" IRON ROD WITH TPC MARKED "CENTRIFUGAL CONCRETE INC." FLUSH	SN 52465
182	25+407.28	45.07	FOUND 5/8" IRON ROD WITH TPC MARKED "CENTRIFUGAL CONCRETE INC." FLUSH	SN 52465
183	25+432.24	45.07	FOUND 5/8" IRON ROD WITH TPC MARKED "CENTRIFUGAL CONCRETE INC." FLUSH	SN 52465
184	25+457.20	45.07	FOUND 5/8" IRON ROD WITH TPC MARKED "CENTRIFUGAL CONCRETE INC." FLUSH	SN 52465
185	25+482.16	45.07	FOUND 5/8" IRON ROD WITH TPC MARKED "CENTRIFUGAL CONCRETE INC." FLUSH	SN 52465
186	25+507.12	45.07	FOUND 5/8" IRON ROD WITH TPC MARKED "CENTRIFUGAL CONCRETE INC." FLUSH	SN 52465
187	25+532.08	45.07	FOUND 5/8" IRON ROD WITH TPC MARKED "CENTRIFUGAL CONCRETE INC." FLUSH	SN 52465
188	25+557.04	45.07	FOUND 5/8" IRON ROD WITH TPC MARKED "CENTRIFUGAL CONCRETE INC." FLUSH	SN 52465
189	25+582.00	45.07	FOUND 5/8" IRON ROD WITH TPC MARKED "CENTRIFUGAL CONCRETE INC." FLUSH	SN 52465
190	25+606.96	45.07	FOUND 5/8" IRON ROD WITH TPC MARKED "CENTRIFUGAL CONCRETE INC." FLUSH	SN 52465
191	25+631.92	45.07	FOUND 5/8" IRON ROD WITH TPC MARKED "CENTRIFUGAL CONCRETE INC." FLUSH	SN 52465
192	25+656.88	45.07	FOUND 5/8" IRON ROD WITH TPC MARKED "CENTRIFUGAL CONCRETE INC." FLUSH	SN 52465
193	25+681.84	45.07	FOUND 5/8" IRON ROD WITH TPC MARKED "CENTRIFUGAL CONCRETE INC." FLUSH	SN 52465
194	25+706.80	45.07	FOUND 5/8" IRON ROD WITH TPC MARKED "CENTRIFUGAL CONCRETE INC." FLUSH	SN 52465
195	25+731.76	45.07	FOUND 5/8" IRON ROD WITH TPC MARKED "CENTRIFUGAL CONCRETE INC." FLUSH	SN 52465
196	25+756.72	45.07	FOUND 5/8" IRON ROD WITH TPC MARKED "CENTRIFUGAL CONCRETE INC." FLUSH	SN 52465
197	25+781.68	45.07	FOUND 5/8" IRON ROD WITH TPC MARKED "CENTRIFUGAL CONCRETE INC." FLUSH	SN 52465
198	25+806.64	45.07	FOUND 5/8" IRON ROD WITH TPC MARKED "CENTRIFUGAL CONCRETE INC." FLUSH	SN 52465
199	25+831.60	45.07	FOUND 5/8" IRON ROD WITH TPC MARKED "CENTRIFUGAL CONCRETE INC." FLUSH	SN 52465
200	25+856.56	45.07	FOUND 5/8" IRON ROD WITH TPC MARKED "CENTRIFUGAL CONCRETE INC." FLUSH	SN 52465

**RECORD OF SURVEY**  
**257th DRIVE - COUNTY ROAD NO. 4931**  
 SE STARK STREET TO COLUMBIA RIVER HWY.  
 SITUATED IN THE WEST 1/2 OF SECTION 25,  
 THE SOUTHEAST 1/4 OF SECTION 26,  
 AND THE EAST 1/2 OF SECTION 35,  
 TOWNSHIP 1 NORTH, RANGE 3 EAST, WILLAMETTE MERIDIAN,  
 CITY OF TROUTDALE, MULTNOMAH COUNTY, OREGON

MULTNOMAH COUNTY  
 SURVEY RECORDS  
 FILE: JUNE 17, 2004  
 59209  
 REGISTER NUMBER



## LEGEND

- FOUND MONUMENT AS NOTED IN MONUMENT TABLES.
- SET 5/8" & 3/4" IRON ROD WITH TPC MARKED "MULT. CO. SURVEY". UNLESS OTHERWISE NOTED.
- ④ MONUMENT IDENTIFIER, SEE MONUMENT TABLES.
- SN SURVEY NUMBER, MULTNOMAH COUNTY SURVEY RECORDS (MCSR).
- YPC YELLOW PLASTIC CAP
- RPC RED PLASTIC CAP
- PP PARTITION PLAT, MULTNOMAH COUNTY DEED RECORDS (MCDR)
- XX-XXXX-XXXX YEAR-BOOK-PAGE, MULTNOMAH COUNTY DEED RECORDS (MCDR)
- XXXX-XXXX DOCUMENT NO. YEAR-NUMBER (MCDR)
- XXXX-XXXX STIPULATED FINAL ADJUDGMENT, MULTNOMAH COUNTY CIRCUIT COURT

REGISTERED  
 PROFESSIONAL  
 LAND SURVEYOR  
*Robert A. Hovden*  
 OREGON  
 JULY 18, 1971  
 ROBERT A. HOVDEN  
 EXPIRATION DATE: 6/30/2005

I CERTIFY THAT THIS SURVEY WAS PREPARED  
 USING THE FOLLOWING INSTRUMENTS:  
 TOTAL STATION  
 POLYMER FILM

**MULTNOMAH COUNTY**  
 DEPARTMENT OF BUSINESS AND COMMUNITY SERVICES  
 1800 SE 180TH AVE., PORTLAND, OR 97233

257th DRIVE, COUNTY ROAD NO. 4931

ROBERT A. HOVDEN, P.L.S. COUNTY SURVEYOR  
 Drafted: KSH Checked: SRO/RAH  
 Date: 2/09/2004 Scale: 1" = 60'

Sheet 4 of 8

59209

59209

57209



59209

**257TH DRIVE MONUMENT TABLE**

POINT NUMBER	STATION	OFFSET	MONUMENT DESCRIPTION	ORIGIN
143	48+54.09	40.00' LT	FOUND 5/8" IRON ROD IN 2" IRON PIPE DOWN 0.5'	COLUMBIA CREST ESTATES
144	48+54.10	40.00' LT	FOUND 5/8" IRON ROD WITH YPC MARKED "G.M. 1988"	COLUMBIA CREST ESTATES
145	48+54.11	40.00' LT	FOUND 5/8" IRON ROD WITH YPC MARKED "G.M. 1988"	COLUMBIA CREST ESTATES
146	48+54.12	40.00' LT	FOUND 5/8" IRON ROD WITH YPC MARKED "G.M. 1988"	COLUMBIA CREST ESTATES
147	48+54.13	40.00' LT	FOUND 5/8" IRON ROD WITH YPC MARKED "G.M. 1988"	COLUMBIA CREST ESTATES
148	48+54.14	40.00' LT	FOUND 5/8" IRON ROD WITH YPC MARKED "G.M. 1988"	COLUMBIA CREST ESTATES
149	48+54.15	40.00' LT	FOUND 5/8" IRON ROD WITH YPC MARKED "G.M. 1988"	COLUMBIA CREST ESTATES
150	48+54.16	40.00' LT	FOUND 5/8" IRON ROD WITH YPC MARKED "G.M. 1988"	COLUMBIA CREST ESTATES
151	48+54.17	40.00' LT	FOUND 5/8" IRON ROD WITH YPC MARKED "G.M. 1988"	COLUMBIA CREST ESTATES
152	48+54.18	40.00' LT	FOUND 5/8" IRON ROD WITH YPC MARKED "G.M. 1988"	COLUMBIA CREST ESTATES
153	48+54.19	40.00' LT	FOUND 5/8" IRON ROD WITH YPC MARKED "G.M. 1988"	COLUMBIA CREST ESTATES
154	48+54.20	40.00' LT	FOUND 5/8" IRON ROD WITH YPC MARKED "G.M. 1988"	COLUMBIA CREST ESTATES
155	48+54.21	40.00' LT	FOUND 5/8" IRON ROD WITH YPC MARKED "G.M. 1988"	COLUMBIA CREST ESTATES
156	48+54.22	40.00' LT	FOUND 5/8" IRON ROD WITH YPC MARKED "G.M. 1988"	COLUMBIA CREST ESTATES
157	48+54.23	40.00' LT	FOUND 5/8" IRON ROD WITH YPC MARKED "G.M. 1988"	COLUMBIA CREST ESTATES
158	48+54.24	40.00' LT	FOUND 5/8" IRON ROD WITH YPC MARKED "G.M. 1988"	COLUMBIA CREST ESTATES
159	48+54.25	40.00' LT	FOUND 5/8" IRON ROD WITH YPC MARKED "G.M. 1988"	COLUMBIA CREST ESTATES
160	48+54.26	40.00' LT	FOUND 5/8" IRON ROD WITH YPC MARKED "G.M. 1988"	COLUMBIA CREST ESTATES
161	48+54.27	40.00' LT	FOUND 5/8" IRON ROD WITH YPC MARKED "G.M. 1988"	COLUMBIA CREST ESTATES
162	48+54.28	40.00' LT	FOUND 5/8" IRON ROD WITH YPC MARKED "G.M. 1988"	COLUMBIA CREST ESTATES
163	48+54.29	40.00' LT	FOUND 5/8" IRON ROD WITH YPC MARKED "G.M. 1988"	COLUMBIA CREST ESTATES
164	48+54.30	40.00' LT	FOUND 5/8" IRON ROD WITH YPC MARKED "G.M. 1988"	COLUMBIA CREST ESTATES
165	48+54.31	40.00' LT	FOUND 5/8" IRON ROD WITH YPC MARKED "G.M. 1988"	COLUMBIA CREST ESTATES
166	48+54.32	40.00' LT	FOUND 5/8" IRON ROD WITH YPC MARKED "G.M. 1988"	COLUMBIA CREST ESTATES
167	48+54.33	40.00' LT	FOUND 5/8" IRON ROD WITH YPC MARKED "G.M. 1988"	COLUMBIA CREST ESTATES
168	48+54.34	40.00' LT	FOUND 5/8" IRON ROD WITH YPC MARKED "G.M. 1988"	COLUMBIA CREST ESTATES
169	48+54.35	40.00' LT	FOUND 5/8" IRON ROD WITH YPC MARKED "G.M. 1988"	COLUMBIA CREST ESTATES
170	48+54.36	40.00' LT	FOUND 5/8" IRON ROD WITH YPC MARKED "G.M. 1988"	COLUMBIA CREST ESTATES
171	48+54.37	40.00' LT	FOUND 5/8" IRON ROD WITH YPC MARKED "G.M. 1988"	COLUMBIA CREST ESTATES
172	48+54.38	40.00' LT	FOUND 5/8" IRON ROD WITH YPC MARKED "G.M. 1988"	COLUMBIA CREST ESTATES
173	48+54.39	40.00' LT	FOUND 5/8" IRON ROD WITH YPC MARKED "G.M. 1988"	COLUMBIA CREST ESTATES
174	48+54.40	40.00' LT	FOUND 5/8" IRON ROD WITH YPC MARKED "G.M. 1988"	COLUMBIA CREST ESTATES
175	48+54.41	40.00' LT	FOUND 5/8" IRON ROD WITH YPC MARKED "G.M. 1988"	COLUMBIA CREST ESTATES
176	48+54.42	40.00' LT	FOUND 5/8" IRON ROD WITH YPC MARKED "G.M. 1988"	COLUMBIA CREST ESTATES
177	48+54.43	40.00' LT	FOUND 5/8" IRON ROD WITH YPC MARKED "G.M. 1988"	COLUMBIA CREST ESTATES
178	48+54.44	40.00' LT	FOUND 5/8" IRON ROD WITH YPC MARKED "G.M. 1988"	COLUMBIA CREST ESTATES
179	48+54.45	40.00' LT	FOUND 5/8" IRON ROD WITH YPC MARKED "G.M. 1988"	COLUMBIA CREST ESTATES
180	48+54.46	40.00' LT	FOUND 5/8" IRON ROD WITH YPC MARKED "G.M. 1988"	COLUMBIA CREST ESTATES
181	48+54.47	40.00' LT	FOUND 5/8" IRON ROD WITH YPC MARKED "G.M. 1988"	COLUMBIA CREST ESTATES
182	48+54.48	40.00' LT	FOUND 5/8" IRON ROD WITH YPC MARKED "G.M. 1988"	COLUMBIA CREST ESTATES
183	48+54.49	40.00' LT	FOUND 5/8" IRON ROD WITH YPC MARKED "G.M. 1988"	COLUMBIA CREST ESTATES
184	48+54.50	40.00' LT	FOUND 5/8" IRON ROD WITH YPC MARKED "G.M. 1988"	COLUMBIA CREST ESTATES
185	48+54.51	40.00' LT	FOUND 5/8" IRON ROD WITH YPC MARKED "G.M. 1988"	COLUMBIA CREST ESTATES
186	48+54.52	40.00' LT	FOUND 5/8" IRON ROD WITH YPC MARKED "G.M. 1988"	COLUMBIA CREST ESTATES
187	48+54.53	40.00' LT	FOUND 5/8" IRON ROD WITH YPC MARKED "G.M. 1988"	COLUMBIA CREST ESTATES
188	48+54.54	40.00' LT	FOUND 5/8" IRON ROD WITH YPC MARKED "G.M. 1988"	COLUMBIA CREST ESTATES
189	48+54.55	40.00' LT	FOUND 5/8" IRON ROD WITH YPC MARKED "G.M. 1988"	COLUMBIA CREST ESTATES
190	48+54.56	40.00' LT	FOUND 5/8" IRON ROD WITH YPC MARKED "G.M. 1988"	COLUMBIA CREST ESTATES
191	48+54.57	40.00' LT	FOUND 5/8" IRON ROD WITH YPC MARKED "G.M. 1988"	COLUMBIA CREST ESTATES
192	48+54.58	40.00' LT	FOUND 5/8" IRON ROD WITH YPC MARKED "G.M. 1988"	COLUMBIA CREST ESTATES
193	48+54.59	40.00' LT	FOUND 5/8" IRON ROD WITH YPC MARKED "G.M. 1988"	COLUMBIA CREST ESTATES
194	48+54.60	40.00' LT	FOUND 5/8" IRON ROD WITH YPC MARKED "G.M. 1988"	COLUMBIA CREST ESTATES
195	48+54.61	40.00' LT	FOUND 5/8" IRON ROD WITH YPC MARKED "G.M. 1988"	COLUMBIA CREST ESTATES
196	48+54.62	40.00' LT	FOUND 5/8" IRON ROD WITH YPC MARKED "G.M. 1988"	COLUMBIA CREST ESTATES
197	48+54.63	40.00' LT	FOUND 5/8" IRON ROD WITH YPC MARKED "G.M. 1988"	COLUMBIA CREST ESTATES
198	48+54.64	40.00' LT	FOUND 5/8" IRON ROD WITH YPC MARKED "G.M. 1988"	COLUMBIA CREST ESTATES
199	48+54.65	40.00' LT	FOUND 5/8" IRON ROD WITH YPC MARKED "G.M. 1988"	COLUMBIA CREST ESTATES
200	48+54.66	40.00' LT	FOUND 5/8" IRON ROD WITH YPC MARKED "G.M. 1988"	COLUMBIA CREST ESTATES

SECTION CORNER COMMON TO SECTIONS 24, 25, 26 AND 36. 6" X 6" CONCRETE POST WITH 4-1/2" BRASS DISC IN MONUMENT BOX. B.T. BOOK E. PAGE 514

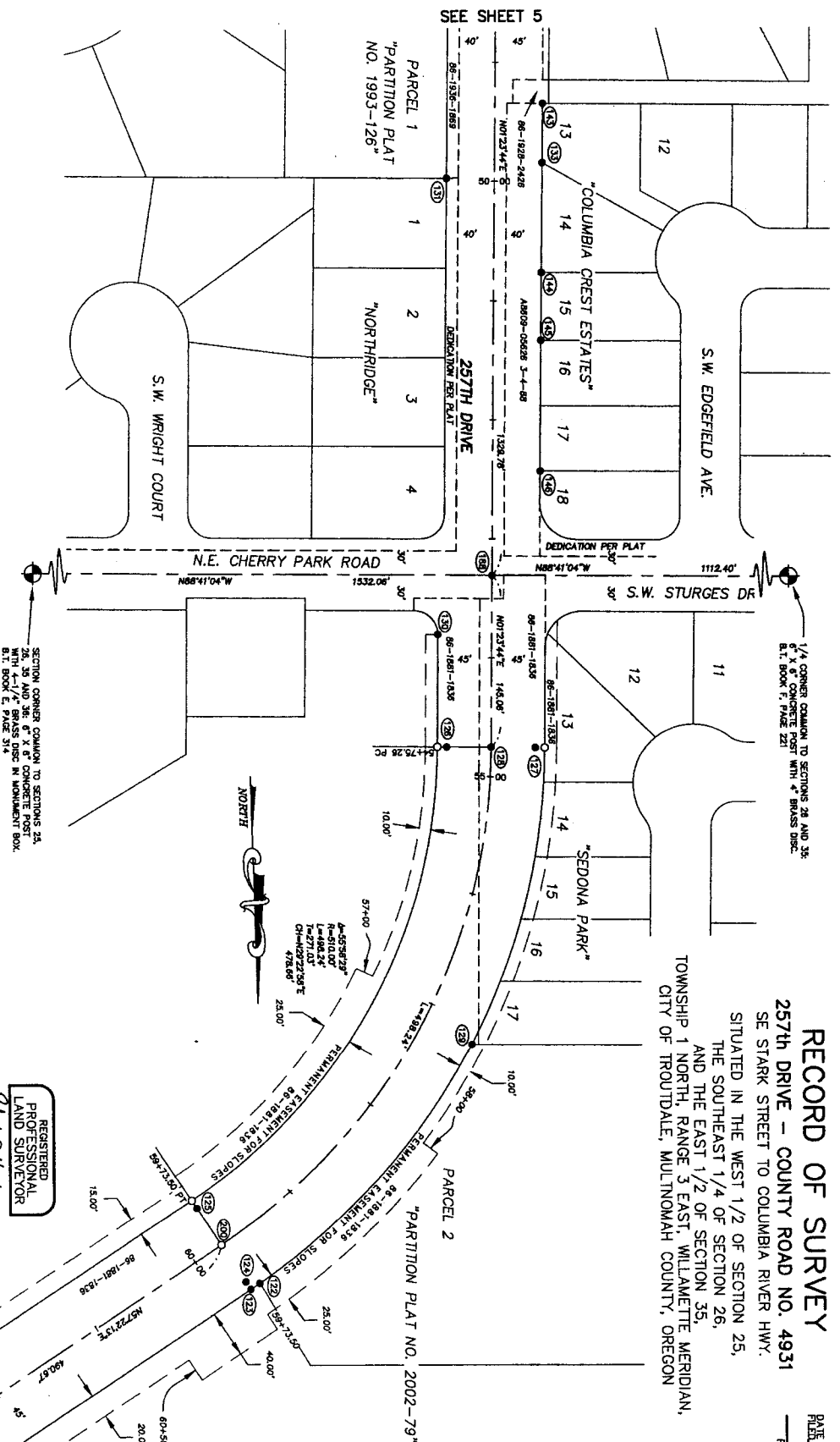
**LEGEND**

- FOUND MONUMENT AS NOTED IN MONUMENT TABLES.
- SET 5/8" X 30" IRON ROD WITH YPC MARKED "MULT. CO. SURVEY".
- ⊙ MONUMENT IDENTIFIER. SEE MONUMENT TABLE THIS SHEET AND VARIANTE ON SHEET 1.
- SN SURVEY NUMBER, MULTINOMAH COUNTY SURVEY RECORDS (MCSR).
- YPC YELLOW PLASTIC CAP
- RED PLASTIC CAP
- XX-XXXX-XXXX YEAR-BOOK-PAGE, MULTINOMAH COUNTY DEED RECORDS (MCDR)
- PP PARTITION PLAT, MULTINOMAH COUNTY PLAT RECORDS.
- AXXX-XXXX STIPULATED FINAL ADJUDICATE, MULTINOMAH COUNTY CIRCUIT COURT

I CERTIFY THAT THIS SURVEY WAS PREPARED USING THE PRODUCT CH82A ON CONTINENTAL JPCAM2 POLYESTER FILM.

REGISTERED PROFESSIONAL LAND SURVEYOR  
OREGON  
ROBERT A. HODGEN  
854  
*Robert A. Hodgen*

SEE SHEET 7



**RECORD OF SURVEY**  
**257th Drive - County Road No. 4931**  
 SE STARK STREET TO COLUMBIA RIVER HWY.  
 SITUATED IN THE WEST 1/2 OF SECTION 25,  
 AND THE EAST 1/2 OF SECTION 35,  
 TOWNSHIP 1 NORTH, RANGE 3 EAST, WILLAMETTE MERIDIAN,  
 CITY OF TROUDDALE, MULTINOMAH COUNTY, OREGON

MULTINOMAH COUNTY  
 SURVEY RECORDS  
 FILE: JUNE 17, 2004  
 59209  
 REGISTER NUMBER

**MULTINOMAH COUNTY**  
 DEPARTMENT OF BUSINESS AND COMMUNITY SERVICES  
 SURVEY DIVISION AND COMMUNITY SERVICES OFFICE  
 1800 SE. 180TH AVE. TROUDDALE, OR 97233

257th Drive, County Road No. 4931

ROBERT A. HODGEN, P.L.S. COUNTY SURVEYOR

Drafted: KSH Checked: SHG/RAH

Date: 2/09/2004 Scale: 1" = 80'

Sheet 6 of 8

59209

59209

59209

# RECORD OF SURVEY

257th DRIVE - COUNTY ROAD NO. 4931

SE STARK STREET TO COLUMBIA RIVER HWY.

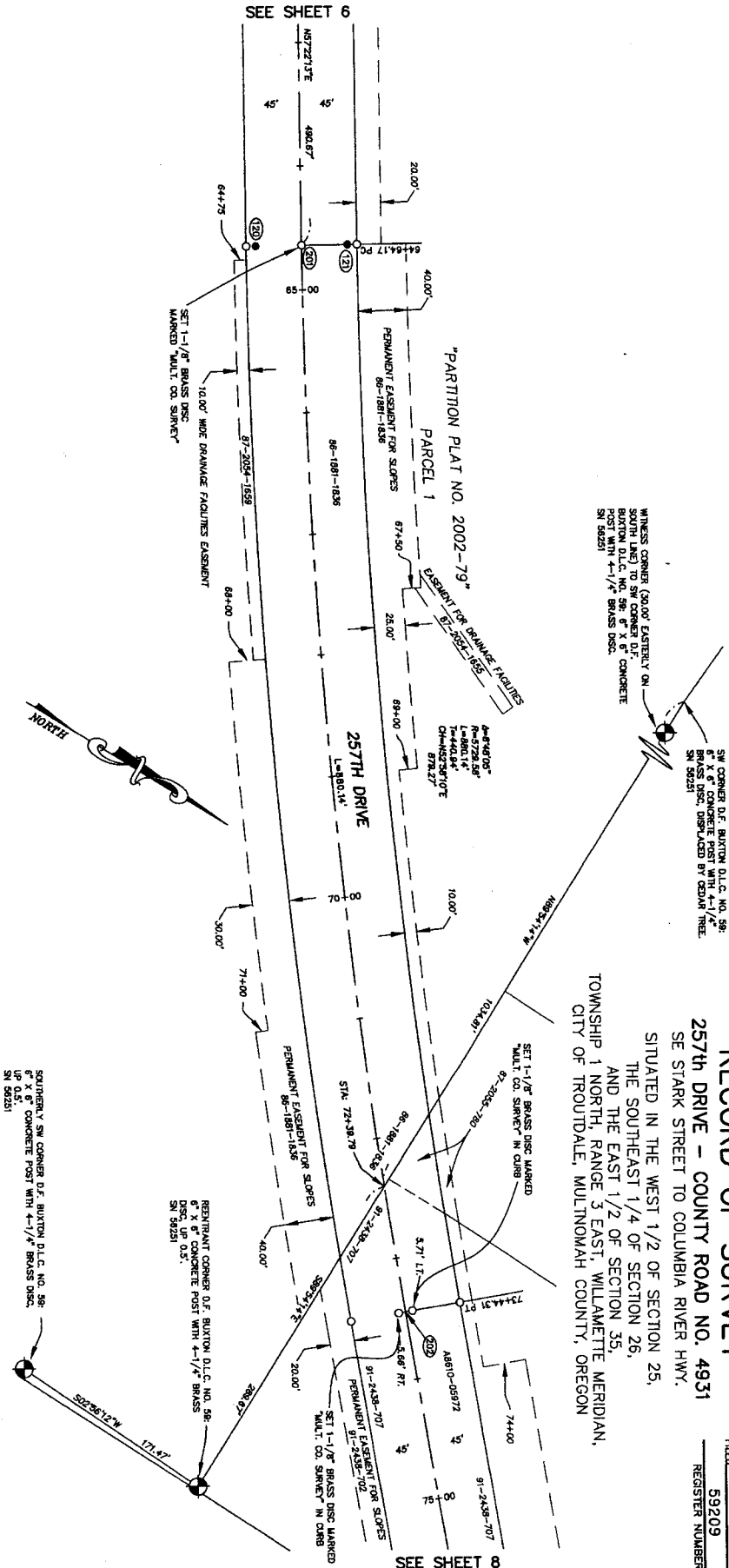
SITUATED IN THE WEST 1/2 OF SECTION 25,

THE SOUTHEAST 1/4 OF SECTION 26,

TOWNSHIP 1 NORTH, RANGE 3 EAST, WILLAMETTE MERIDIAN,  
CITY OF TROUDDALE, MULTNOMAH COUNTY, OREGON

MULTNOMAH COUNTY  
SURVEY RECORDS  
FILED JUNE 17, 2004  
59209  
REGISTER NUMBER

SEE SHEET 6



## 257TH DRIVE MONUMENT TABLE

POINT NUMBER	STATION	OFFSET	MONUMENT DESCRIPTION	ORIGIN
120	64+46.13	37.28' RT.	FOUND BRASS SCREW IN CURB	UP/76
121	64+46.13	37.28' LT.	FOUND BRASS SCREW IN CURB	UP/76

## LEGEND

- FOUND MULTNOMAH COUNTY PUBLIC LAND CORNER MONUMENT AS DESCRIBED.
- FOUND MONUMENT AS NOTED IN MONUMENT TABLE.
- SET 5/8" X 30" IRON ROD WITH YPC MARKED "MULT. CO. SURVEY" UNLESS OTHERWISE NOTED.
- MONUMENT IDENTIFIER, SEE MONUMENT TABLE THIS SHEET AND NARRATIVE ON SHEET 1.
- SN SURVEY NUMBER, MULTNOMAH COUNTY SURVEY RECORDS (MCSR).
- YPC YELLOW PLASTIC CAP
- XX-XXXX-XXXX YEAR-BOOK-PAGE, MULTNOMAH COUNTY DEED RECORDS (MCDR)
- AXXXX-XXXX STIPULATED FINAL ADJUDICATED, MULTNOMAH COUNTY CIRCUIT COURT



257th DRIVE, COUNTY ROAD NO. 4931

ROBERT A. HOVDEN, P.L.S. COUNTY SURVEYOR

Drafted: KSH Checked: SNO/RWH  
Date: 2/09/2004 Scale: 1" = 80'

Sheet 7 of 8

REGISTERED  
PROFESSIONAL  
LAND SURVEYOR  
OREGON  
JULY 18, 1971  
ROBERT A. HOVDEN  
NO. 5252  
RENEWAL DATE 6/30/2005

I CERTIFY THAT THIS SURVEY WAS PREPARED  
USING THE FOLLOWING INSTRUMENTAL  
PCWAVE POLYESTER FILM

59209

59209

