



Multnomah County Board Briefing

November 9, 2010



AIRPORT FUTURES

CHARTING A COURSE FOR PDX



Airport Futures

OVERVIEW

- Started with a 2001 City-Port joint resolution
 - Create a long range development plan for Portland International Airport through 2035
 - Using a collaborative planning process with Port of Portland, City of Portland and metropolitan community
- 3 Year Process started in 2007
- 3 Key Products
 - Port PDX Master Plan
 - City Land Use Plan
 - Ongoing PDX Community Advisory Committee



Airport Futures

KEY THEMES

- **Sustainability**
 - Balancing economic, environmental and social values
 - Meeting the region's air transportation needs without compromising the livability and quality of life for future generations
- **Certainty**
 - PDX will continue to operate in its existing location with flexibility to respond to future needs
 - Big decisions (3rd runway, new terminal) will require new process
- **Community**
 - Planning and development guided by community Vision & Values
 - Ongoing community involvement in airport decision making

Planning Advisory Group (PAG)

30 MEMBER REGIONAL COMMITTEE



24 PAG Meetings

63 Subcommittee Meetings

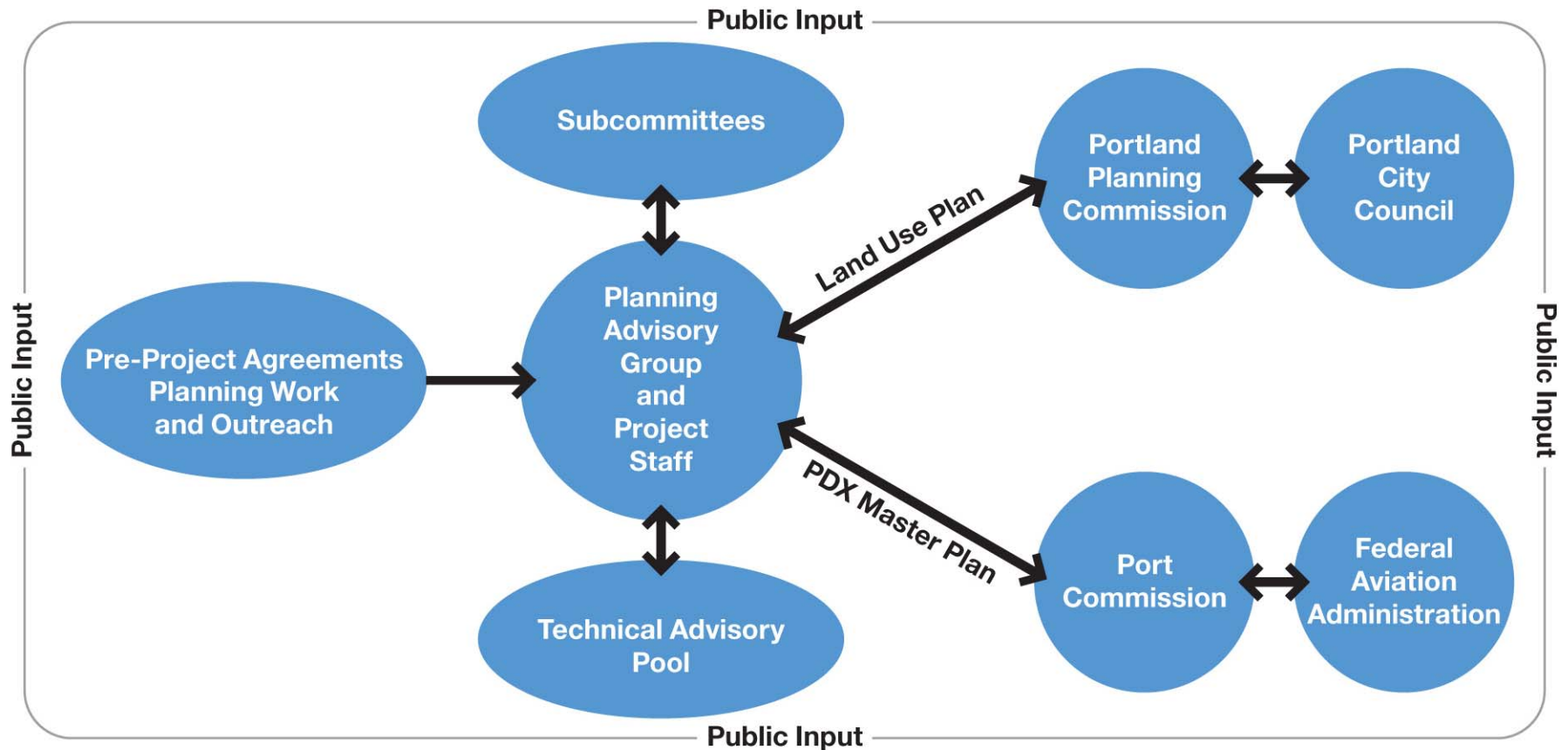
13 Community Meetings

139 Stakeholder Meetings

Planning Commission, City
Council, Port Commission and
Vancouver City Council
Briefings

***Consensus PAG
Recommendation***

Public Engagement and Decision-Making





LAND USE, TRANSPORTATION, NATURAL RESOURCES, HEIGHT, NOISE

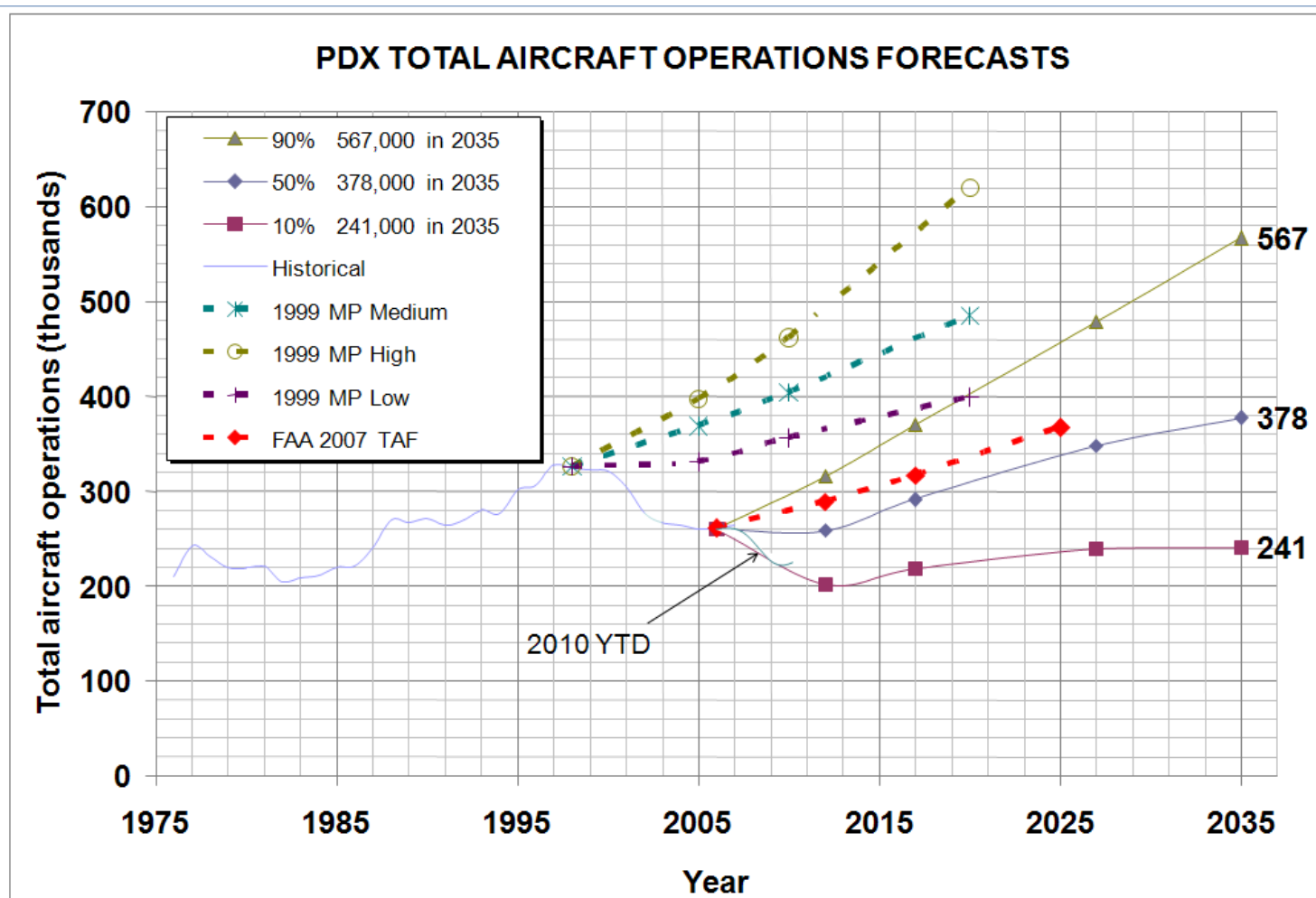


OVERVIEW

- **Long range airport development plan**
 - Plan for facilities required to accommodate forecasted growth through 2035
 - Actual development based on demand
- **Review criteria developed to help balance economic, environmental and social values**
 - Preserve future development options
 - Minimize environmental impacts
 - Use land resources efficiently
 - Maximize operational efficiency
 - Ensure development can be effectively phased

PDX Master Plan

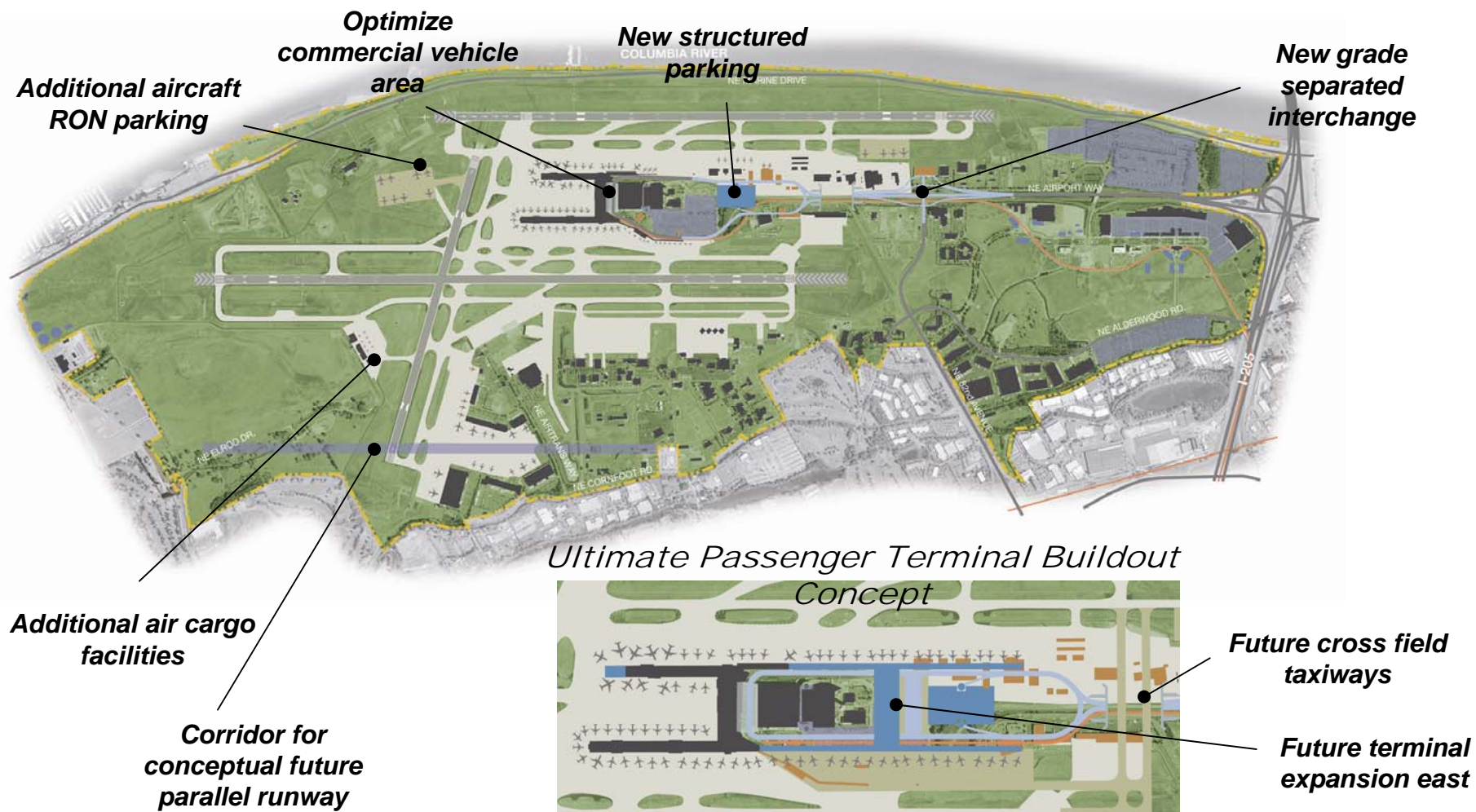
PROBABILISTIC OPERATIONS FORECAST





PDX Master Plan – Centralized Terminal

MORE SUSTAINABLE – Reuse and redevelopment v. new facilities





PDX Master Plan

KEY TAKE AWAYS

- **Third parallel runway not needed in planning horizon (2035)**
- **Development will continue with Centralized concept**
- **Modest investments required through 2017 (18 MAP)**
 - Existing terminal area maximized through operational efficiencies (e.g., shared use of gates and ticket counters)
 - Limited terminal, roadway and airfield improvements
 - Additional remote aircraft parking
 - Potential expansion of general aviation operations
- **Additional investment required by 2022 (21 MAP)**
 - Public Parking
 - Cargo (AirTrans Cargo/Maintenance Center at capacity)



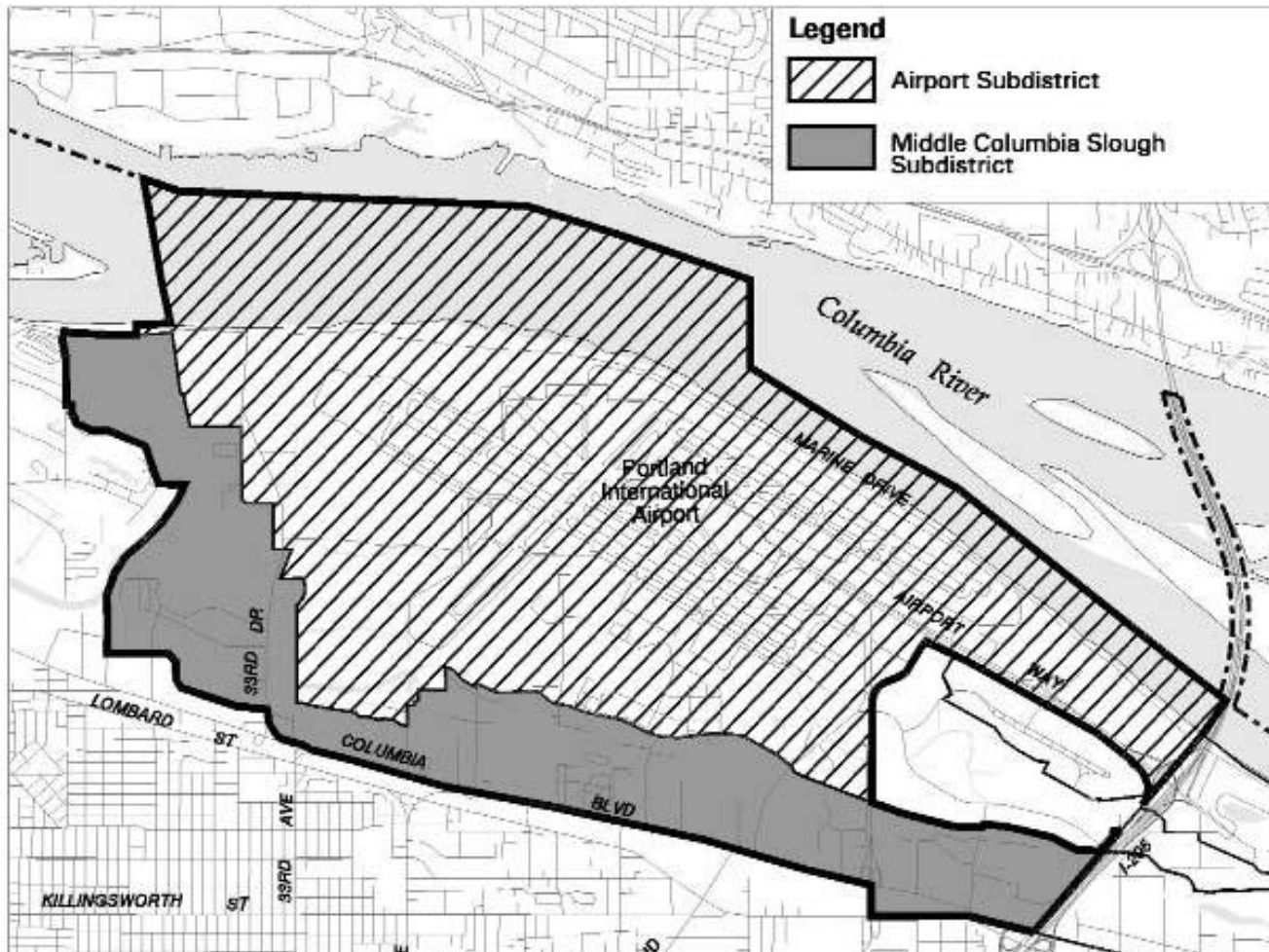
City Land Use Plan

OVERVIEW OF PROPOSAL

- **Replace Conditional Use Process with a Plan District**
- **Evaluate impacts of airport development in broad context**
- **Amend City Comprehensive Plan, Zoning Code, and Zoning Maps**
- **Update City's Natural Resources Program**
- **Enter into City/Port Agreements**
 - Ongoing Public Involvement
 - Transportation / Noise / Sustainability
 - Natural Resources

City Land Use Plan

PDX PLAN DISTRICT AND SUBDISTRICT BOUNDARIES

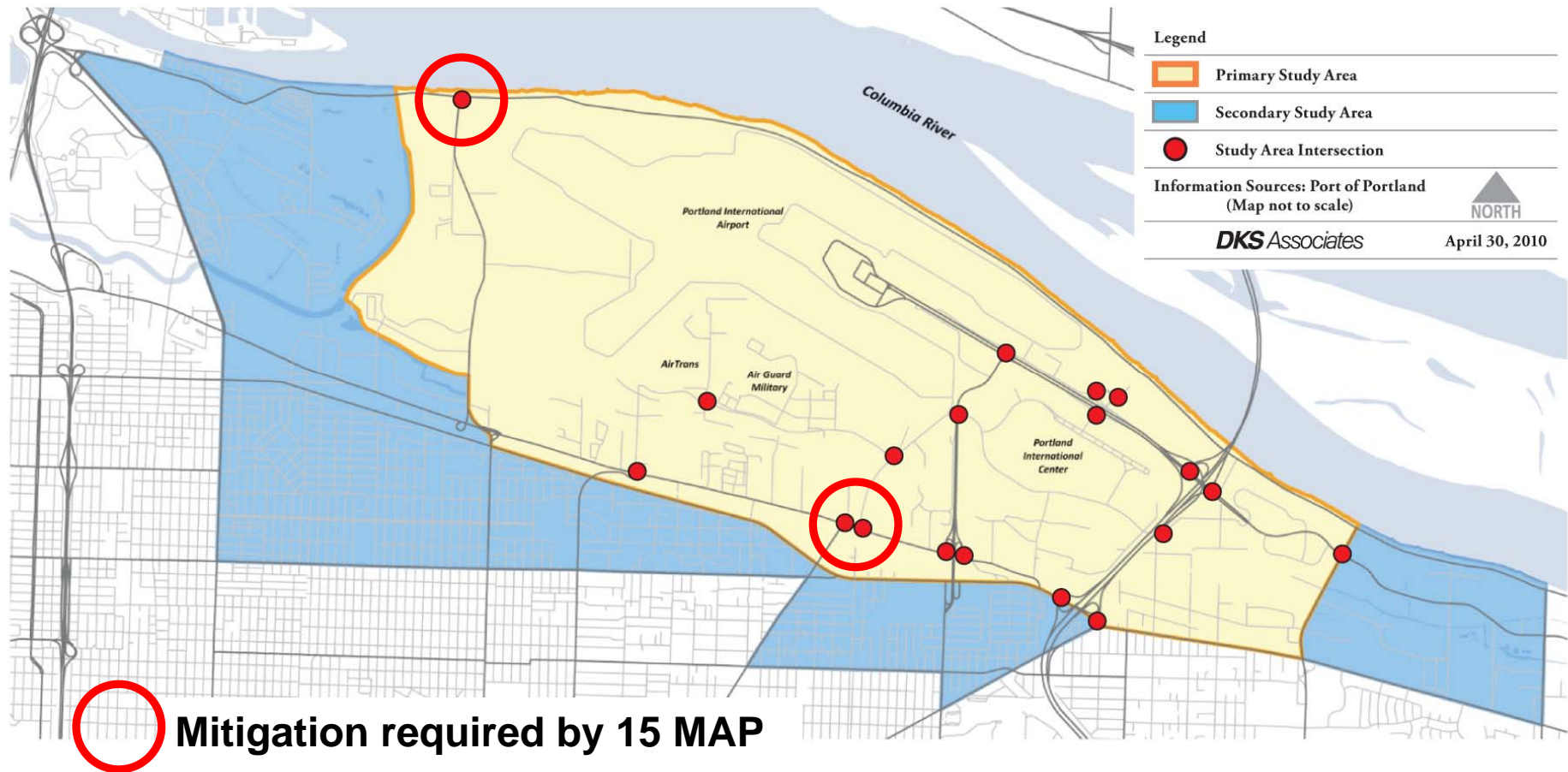


RECOMMENDED AIRPORT SUBDISTRICT

- Airport is “allowed by right”
- Additional “allowed uses” or “accessory uses”
 - Hotels, motels, rental car facilities
- Amended landscaping standards and Portland Plant List to address wildlife hazard issues
- Neighborhood and PDX Community Advisory Committee notice requirements
- Transportation impact analysis required at regular intervals

City Land Use Plan

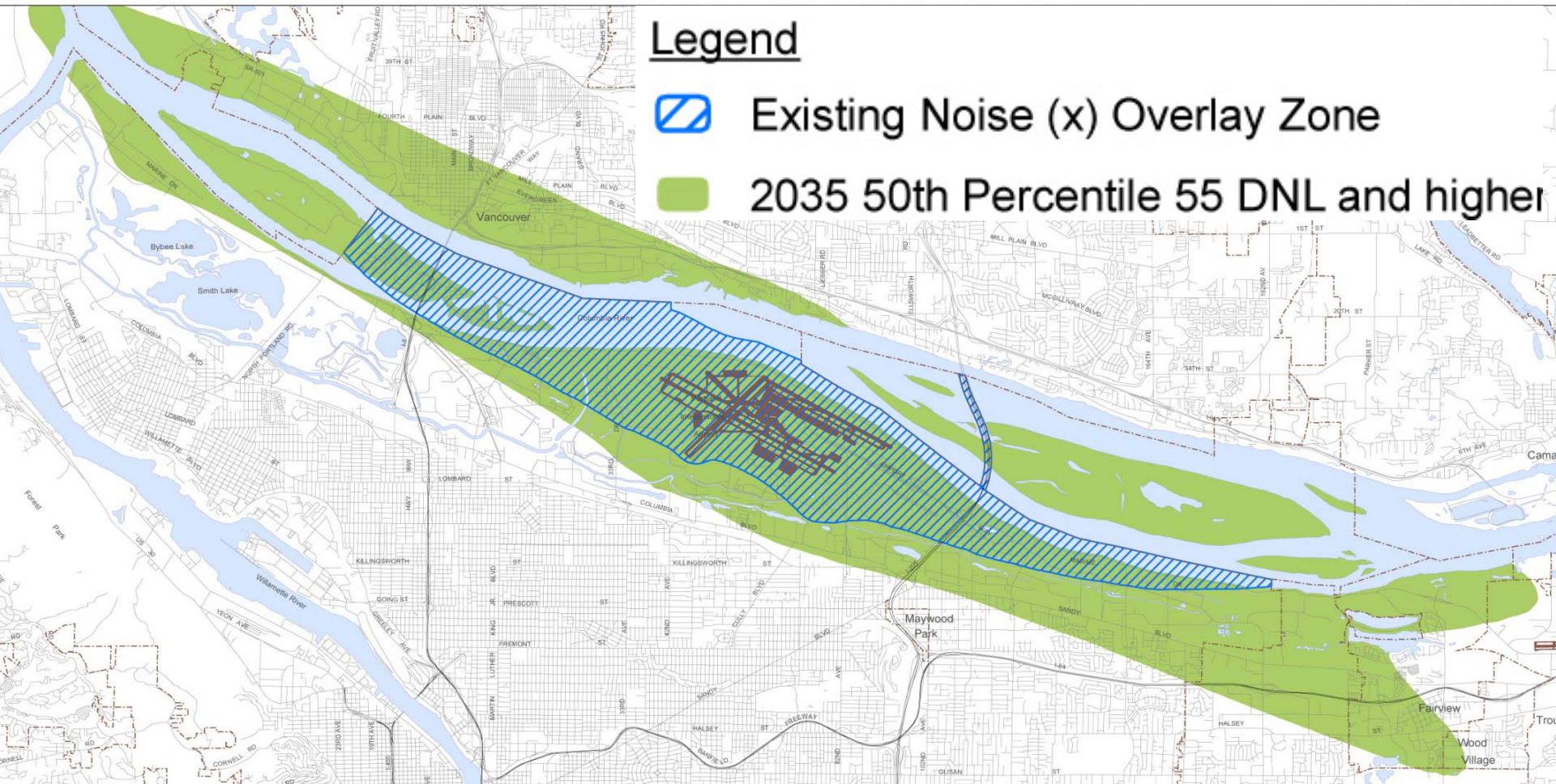
TRANSPORTATION IMPACT ANALYSIS





City Land Use Plan – Noise Beyond the 65 DNL

NEW NOISE OVERLAY BOUNDARY





City Land Use Plan

ENVIRONMENTAL PROGRAM UPDATES

Current:

- City applies environmental overlay zones to significant natural resources

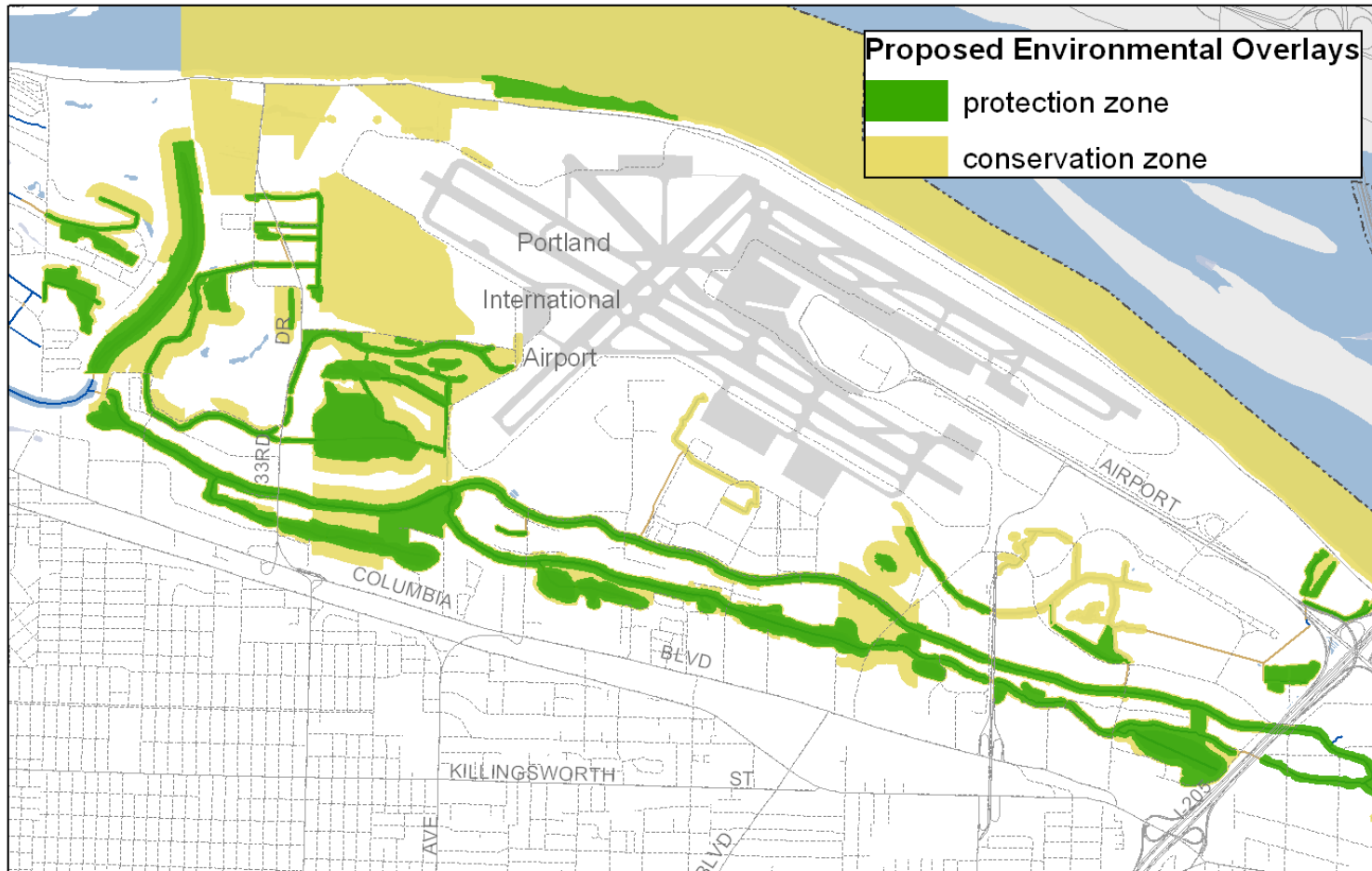
Problems

- Existing natural resource inventories are old
- New science not reflected in past programs
- City must comply with recent federal, state and regional natural resource regulations



City Land Use Plan

ENVIRONMENTAL PROGRAM UPDATES





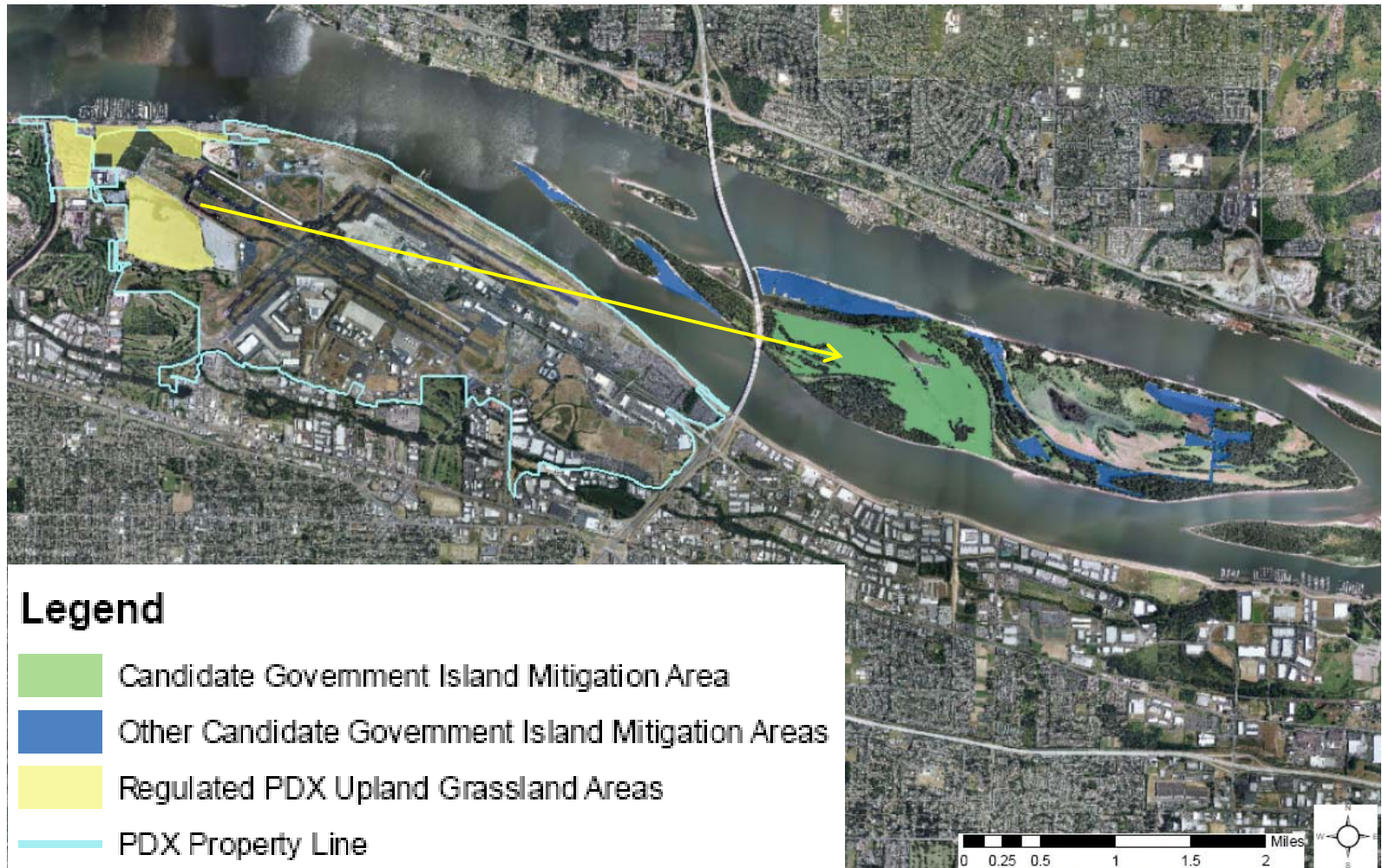
City Land Use Plan – A different tool

ENVIRONMENTAL PROGRAM UPDATES



City Land Use Plan

PORT MITIGATION FOR UPLAND GRASSLANDS



City Land Use Plan

KEY TAKE AWAYS

- **More flexibility to meet changing needs**
- **Third runway and new terminal require new plan**
 - Back to City of Portland for Amendments – new legislative process
- **Improved airport regulations**
 - Addressed safety related to wildlife hazards
 - Noise and Height overlays
- **Mitigation for transportation and natural resource impacts**
- **Noise work group to explore mitigation of community impacts**
- **Ongoing PDX community advisory committee**



Intergovernmental Agreements – City/Port

GENERAL

- **Transportation**
 - Defines mitigation responsibilities
 - Advocate for regional transportation improvements
 - Advocate for transit and bicycle and pedestrian network
- **Sustainability**
 - Memorializes City and Port commitment to the PAG's vision and values, guiding principles, and goals
- **Noise**
 - City and Port to continue efforts to creative solutions to address noise impacts
 - Regular updates to noise contours

Intergovernmental Agreements – City/Port

NATURAL RESOURCES

- Port to mitigate of 300 acres on Government Island in lieu of overlays on four Port properties (268 acres)
- Port to fund enhancements to the Columbia Slough watershed. **Total Value: \$1,094,000**
- Port to fund enhancements to the urban tree canopy in Columbia Slough watershed. **Total Value: \$729,000**



Intergovernmental Agreements – City/Port/Vancouver

PDX COMMUNITY ADVISORY COMMITTEE

- **Ongoing PDX Community Advisory Committee will:**
 - Raise public knowledge about airport issues
 - Support meaningful public engagement
 - Provide opportunity to inform Port and City decision-making
 - Measure success in achieving sustainability goals
- **Sponsored by Port of Portland, City of Portland & City of Vancouver**
- **30 member body (20 voting, 10 ex officio members)**
 - Regional, diverse interests
- **Quarterly meetings on a broad range of topics**
- **Regular reports to sponsoring and appointing agencies**

Airport Futures

MAJOR OUTCOMES AND SUMMARY

- Flexibility for PDX to meet changing needs
- Big issues require community involvement and Portland City Council approval
- Compliance with regulatory requirements
- Mitigation of impacts and overall enhancement of watershed
- Improved partnership between City, Port, and community

Airport Futures

NEXT STEPS

- FAA concurrence on natural resource package
- Portland City Council / Port Commission hearings
 - City approves Land Use Plan and agreements
 - Port approves Master Plan and agreements
- Vancouver hearing
 - City approves sponsorship of ongoing PDX Community Advisory Committee
- Creation of ongoing PDX Community Advisory Committee

QUESTIONS?

Jay Sugnet, City Project Manager
503/823-5869

Sean Loughran, Port Senior Aviation Planner
503/415-6067

www.pdxairportfutures.com



AIRPORT FUTURES

CHARTING A COURSE FOR PDX