

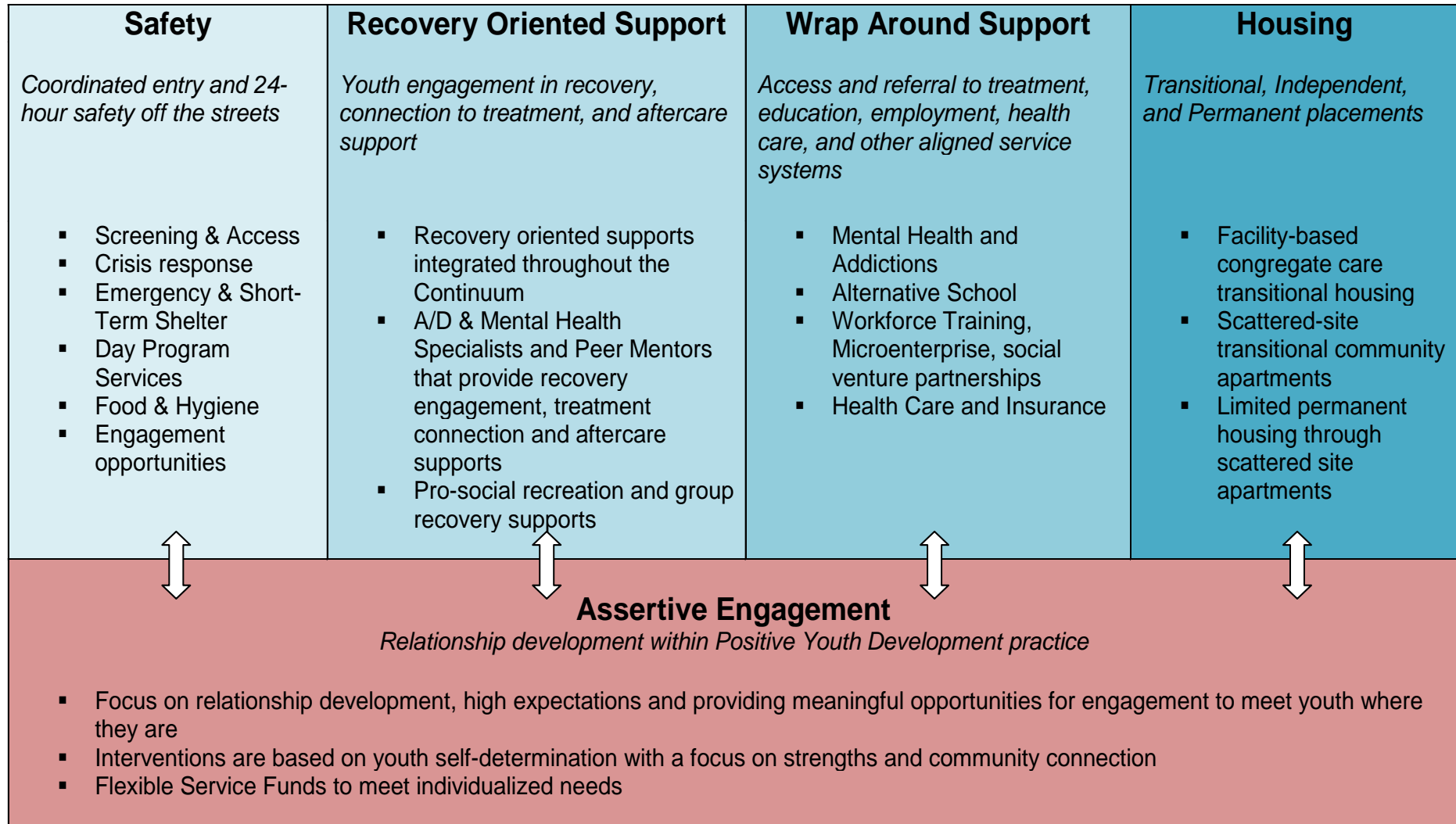


Board Briefing FY15 Budget Note #17 Adequate On-Going Funding for the Homeless Youth System

Department of County Human
Services, Community Services
Division
February 17, 2015

Multnomah County Homeless Youth System

Service Components



By the Numbers

1,212

Total Youth Served

48

% Youth of Color

22,000

Total Shelter Bed Nights
Provided

89

% of Youth in Stable Housing
6 Months after Exit

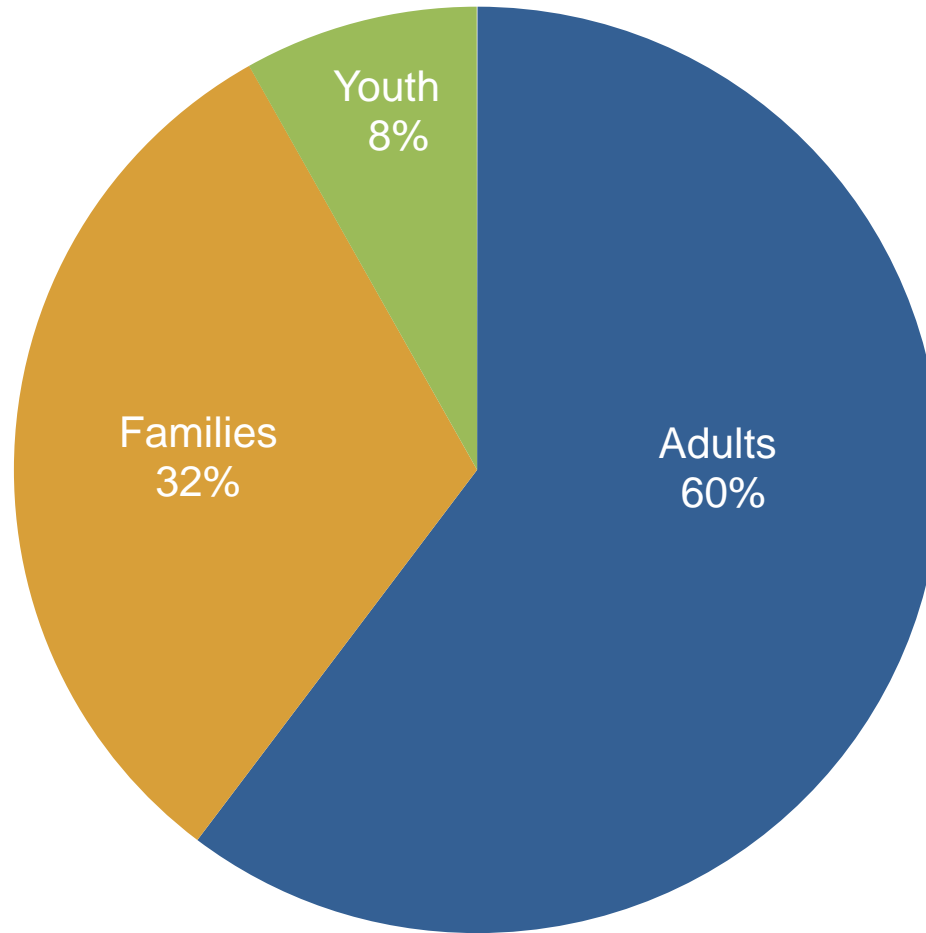
40

% of Youth Earned GED,
Entered College, Employed



Public Investment in Homelessness

Funding by Population (Local/State/Federal)



Fund Allocation by System Component

	SAFETY SERVICES Access, screening, day services and shelter	STABILITY SERVICES Assertive Engagement, flex funds, MH & addictions engagement, education, employment, health	PERMANENCY SERVICES Housing	Total
Public Investment (County, City, HUD)	\$1,504,389 39% of public investment	\$1,372,995 36% of public investment	\$982,870 25% of public investment	\$3,860,254
Agency Leverage	\$461,980	\$1,734,645	\$1,445,034	\$3,641,659
Total	\$1,966,369 26% of total investment	\$3,107,640 41% of total investment	\$2,427,904 32% of total investment	\$7,501,913



Total Housing Gap Estimate

275

(based on # eligible youth screened in minus drop off rate, served in housing, and finding alternate housing options)

Youth Presents for Services
1,200

Youth does not meet eligibility criteria (more than one night housed in last 30 days) and is referred out (200)

Youth Meets Eligibility Criteria via Screening
1,000

Youth does not engage in services and drops out, moves, etc. (250)

Housing Options

Shelter

- Overnight hours only

Current Capacity: 62*

Cost: \$834,831

**2 units of emergency medical housing*

Needed Capacity: 60

Gap: -0-

Cost: \$834,831

Transitional Living

- Site-Based = 61 units
- Scattered-Site = 37 units

Current TL Capacity = 98

Estimated Cost = \$1,714,807

Total Needed Capacity = 236

Gap = 138 Units

Cost = \$2.4 million

Independent Living

- STRA move-in/one time assistance

Current IL Capacity: 42

Cost: \$43,316

Total Needed Capacity = 142

Gap = 100 Units

Cost = \$103,100

PSH

- Site-based = 31 units
- Scattered = 41 units

Current PSH Capacity: 65

Cost: \$653,889

Total Needed Capacity = 102

Gap = 37 Units

Cost = \$372,183

