

Sauvie Island/Multnomah Channel Scoping Outreach



Multnomah County

Board of County Commissioners Briefing

June 13, 2013

Project Staff: Kevin Cook, Joanna Valencia, and Chuck Beasley

Today's Presentation

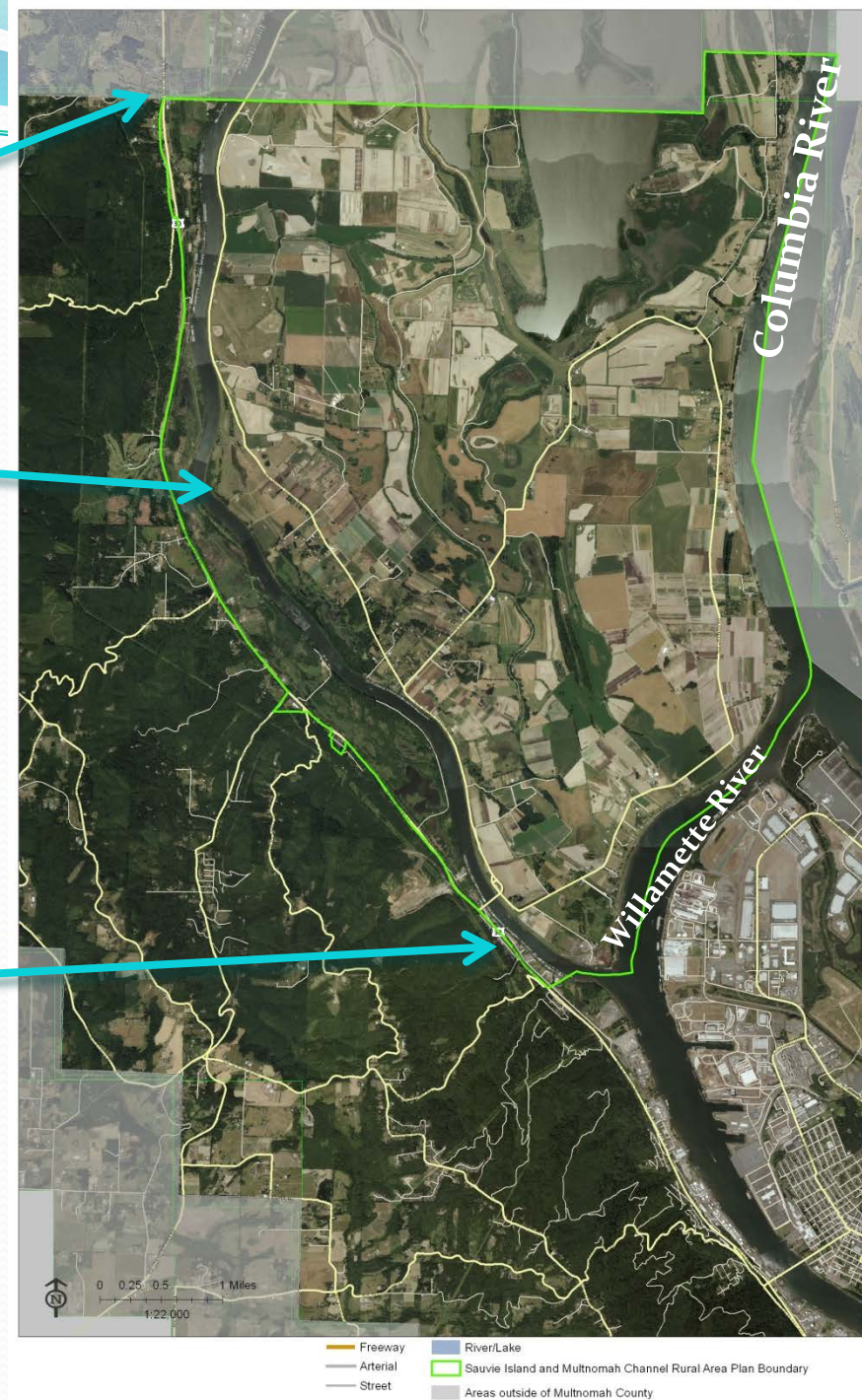
- Project Area/History
- Scoping Process
- What we heard
- Next Steps

County line

Multnomah Channel

Highway 30

Project Area

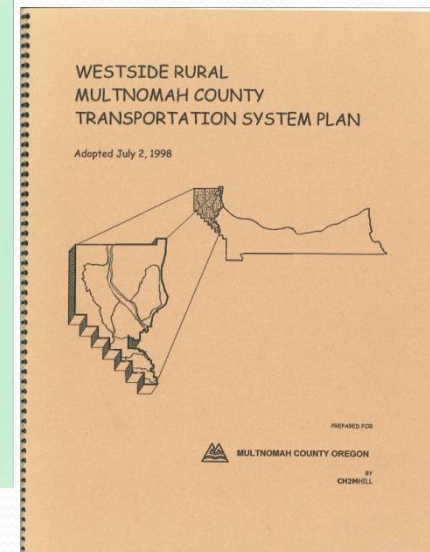
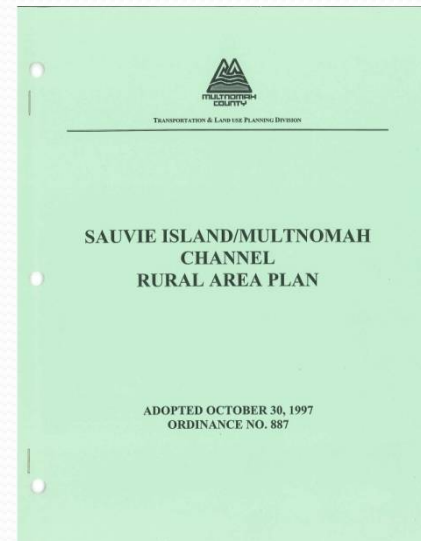
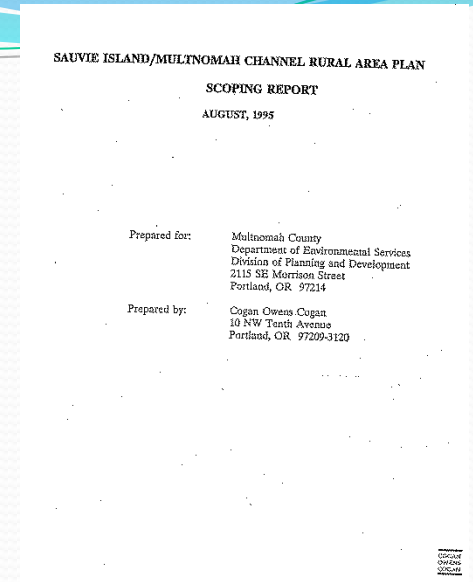


History

- 1997: Rural Area Plan
- 1998: The Westside Rural Multnomah County Transportation System Plan

Since the last RAP and TSP was adopted:

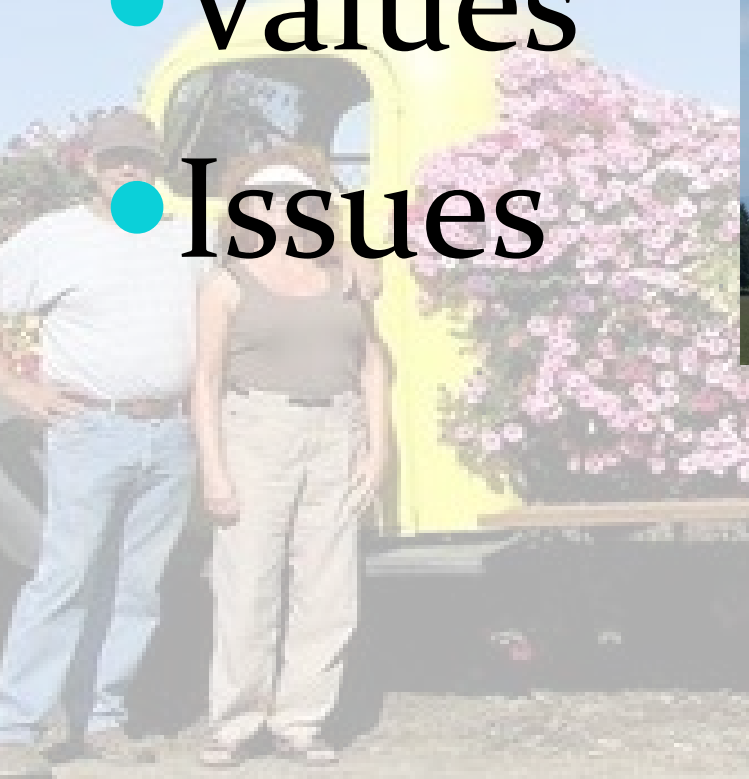
- Increased population growth
- Access, permitting, and Willamette River Greenway concerns
- Increased use of the area and increased traffic



Scoping Process

What we asked

- Values
- Issues



How we gathered information

- Questionnaires mailed and provided online
- Two public open houses
- Government and nongovernment stakeholder meetings
- Focus group meetings



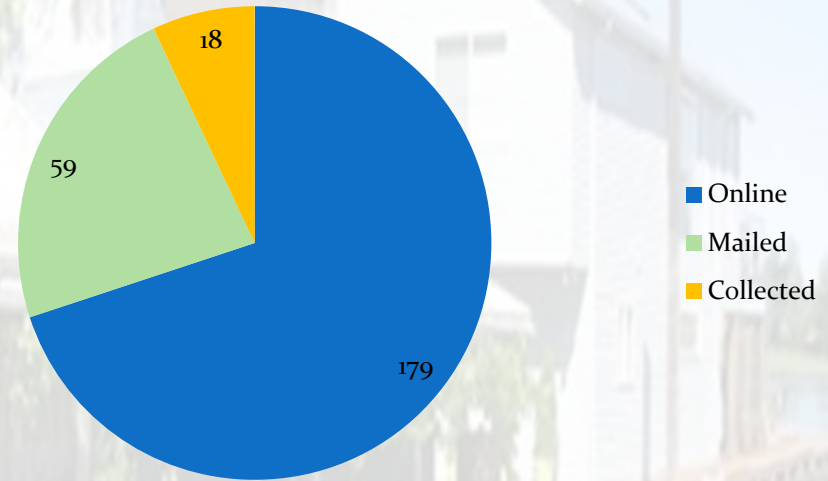
Public Outreach

Online Outreach

25% response rate

Approximately 22
hours engaging people
one on one

Approximately 132
people attended
meetings



Total: 256 responses

What we heard

- Maintain rural character of the area
- Desire to protect, maintain, and enhance wildlife and natural habitat
- Maintain and support farming as a primary activity on Sauvie Island
- Impacts from uses such as farm stands, events and beaches

What we heard

- Clear standards for moorages and marinas
- Sanitation and infrastructure limitations along the Channel
- Road safety, congestion, and traffic conflicts
- Address safety at railroad crossings

Next Steps

Update of the Sauvie Island and Multnomah Channel Rural Area Plan (RAP) and Transportation System Plan (TSP)

Continuing to engage the public

Timeline: Update will begin early in FY 2014

Questions?

