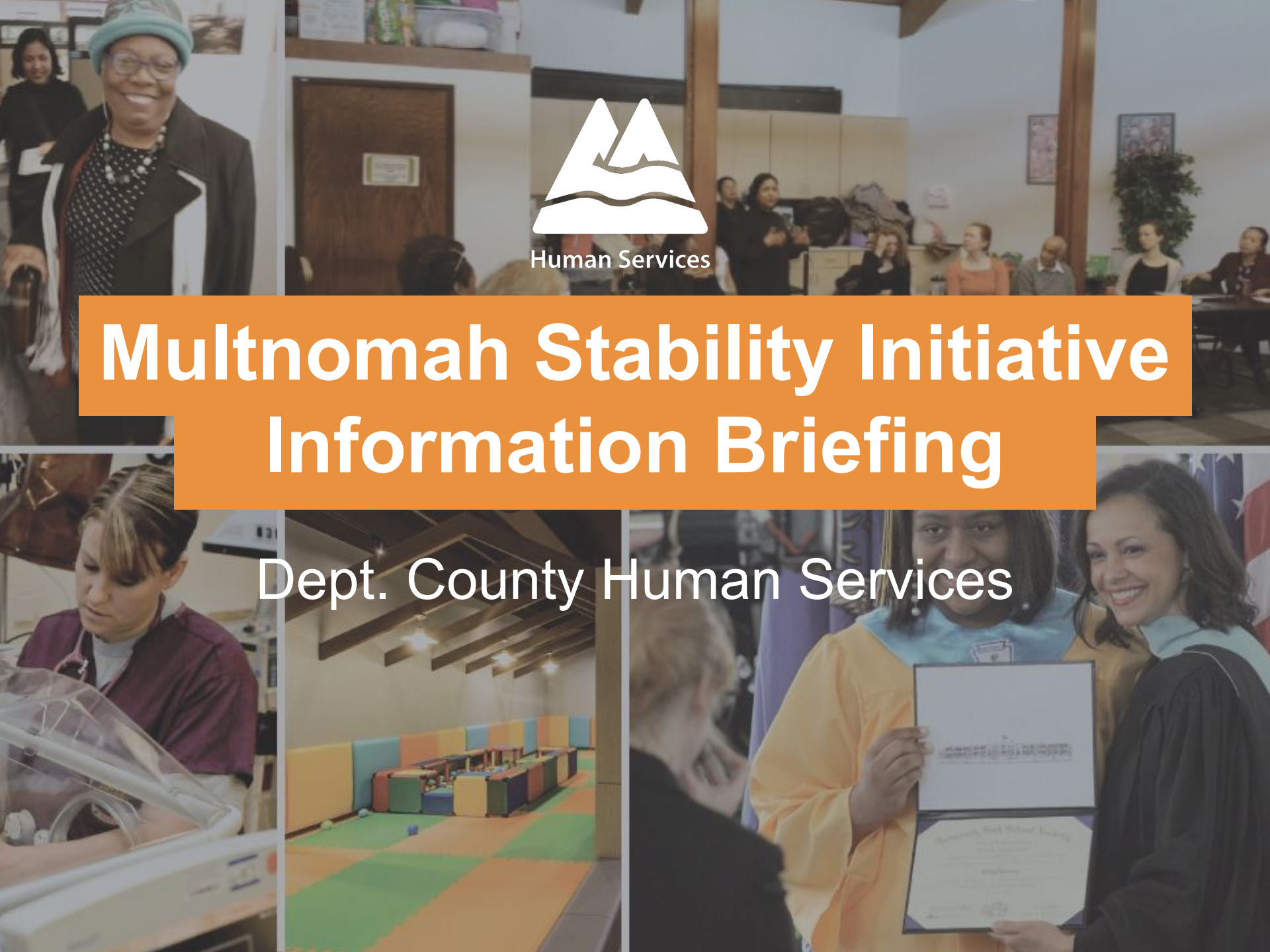




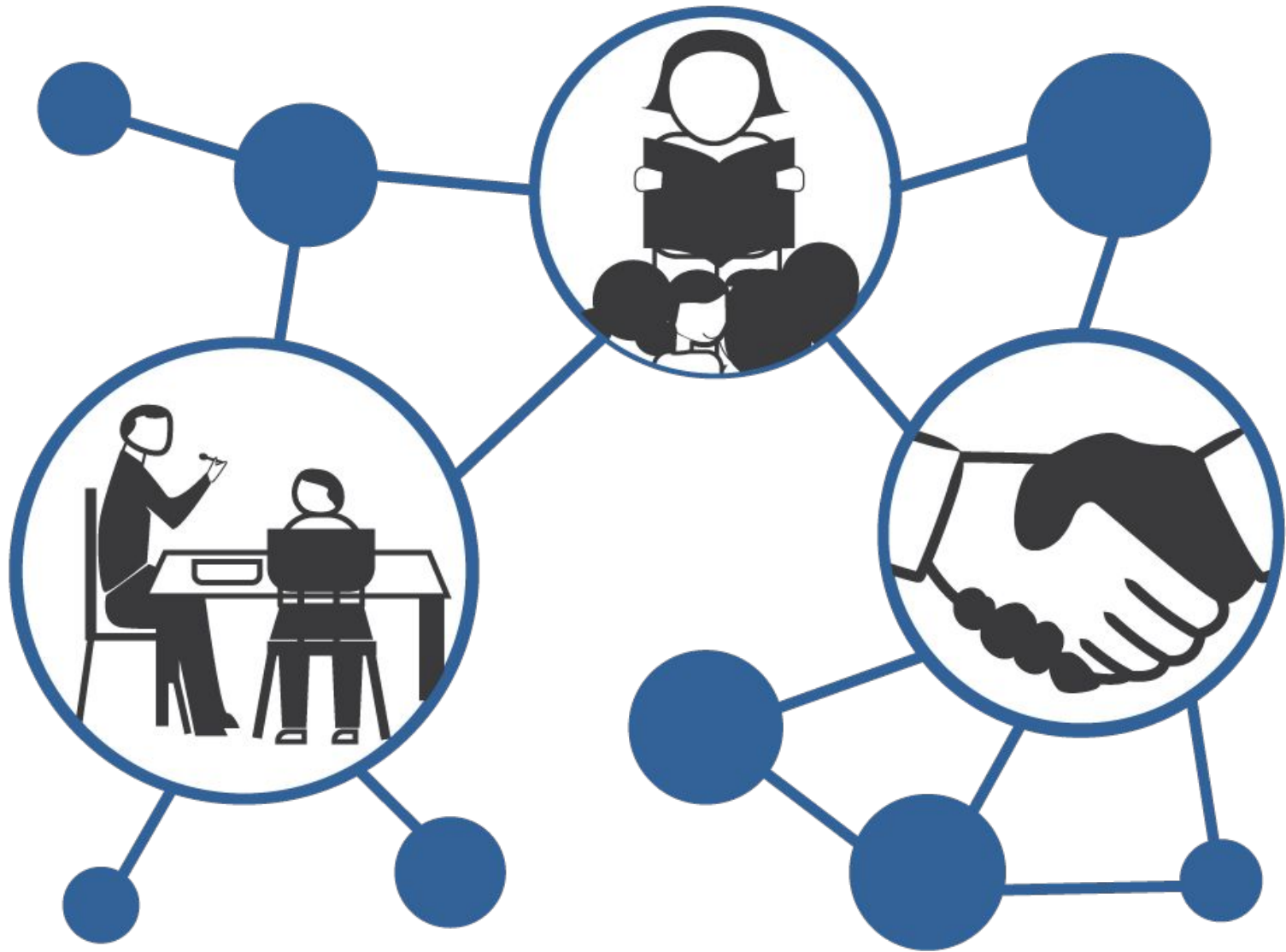
Human Services

# Multnomah Stability Initiative Information Briefing

Dept. County Human Services



# Connections build possibility



# Unfortunately modern systems can be isolating



# Our county faces income inequities

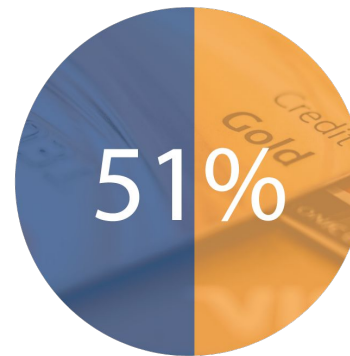
Measure	Multnomah County	Oregon	United States
2014 Income Poverty Rate*	10.4%	9.3%	9.6%
% Worse for People of Color	223.7%	181.2%	204.8%

\*Percentage of households with income below the federal poverty threshold

Assets and Opportunity Profile: Portland



of County residents in poverty are women<sup>1</sup>



of County residents have subprime credit scores<sup>2</sup>

<sup>1</sup>2014 Poverty in Multnomah County Report  
<sup>2</sup>Assets and Opportunity Profile: Portland










# And barriers to housing opportunity

Measure	Multnomah County	Oregon	United States
Homeownership Rate	58.9%	64.4%	67.1%
% Worse for People of Color	28.6%	30.3%	33.5%
Cost Burdened Renters	49.9%	46.6%	45.9%

Assets and Opportunity Profile: Portland

There are no neighborhoods in Portland where the average Latino, Black, Native American, and single-mother households, can afford to rent.

- “State of Housing in Portland”  
Report, 2016

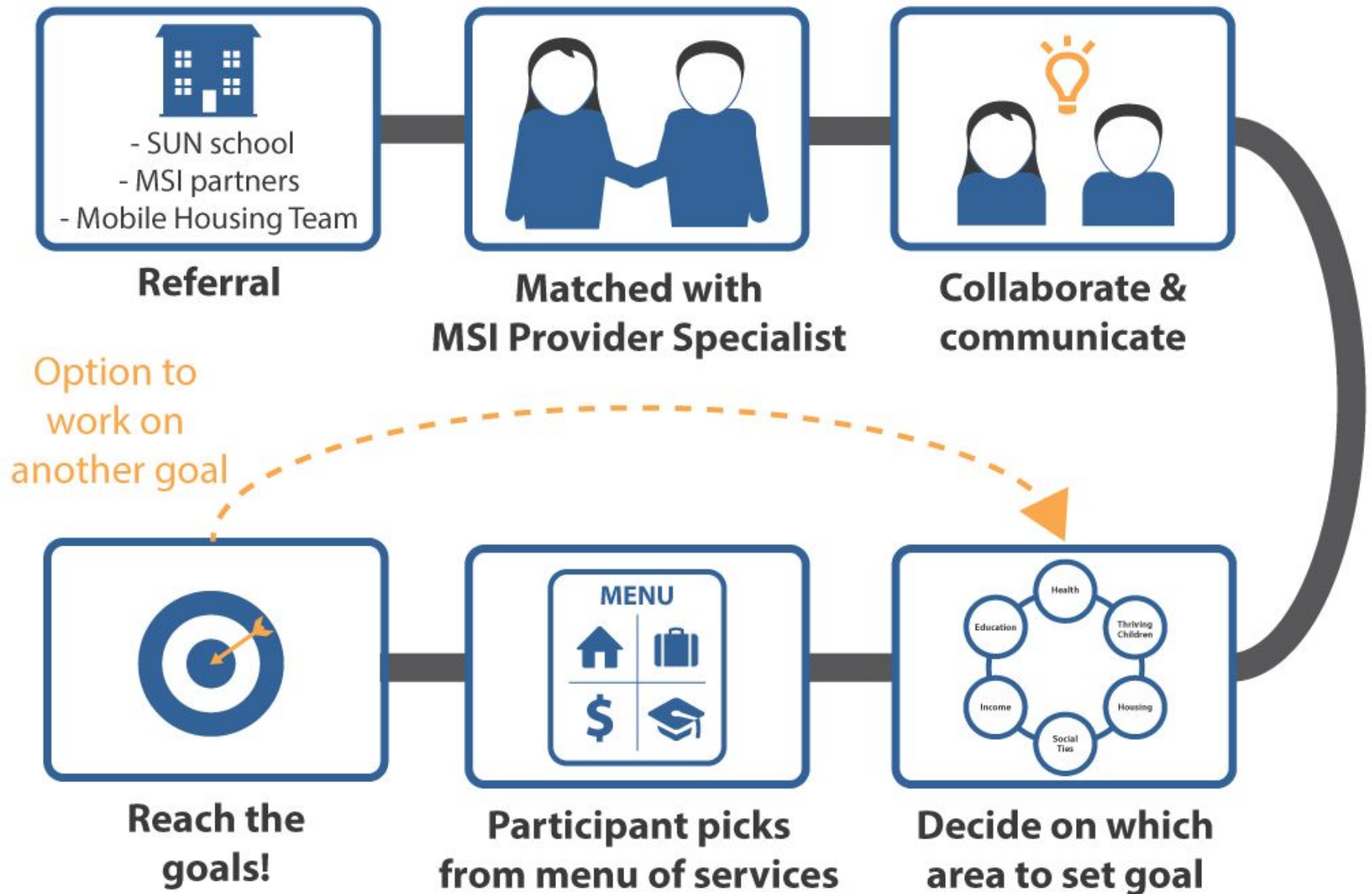
	Former model	MSI
 Caseworker/ Client	 Directive	 Collaborative
 System	 Lack of Coordination	 Focused on Coordination
 Family Goals	 One Need at a Time	 More Family Choice



# Serving the whole family



# How people access services

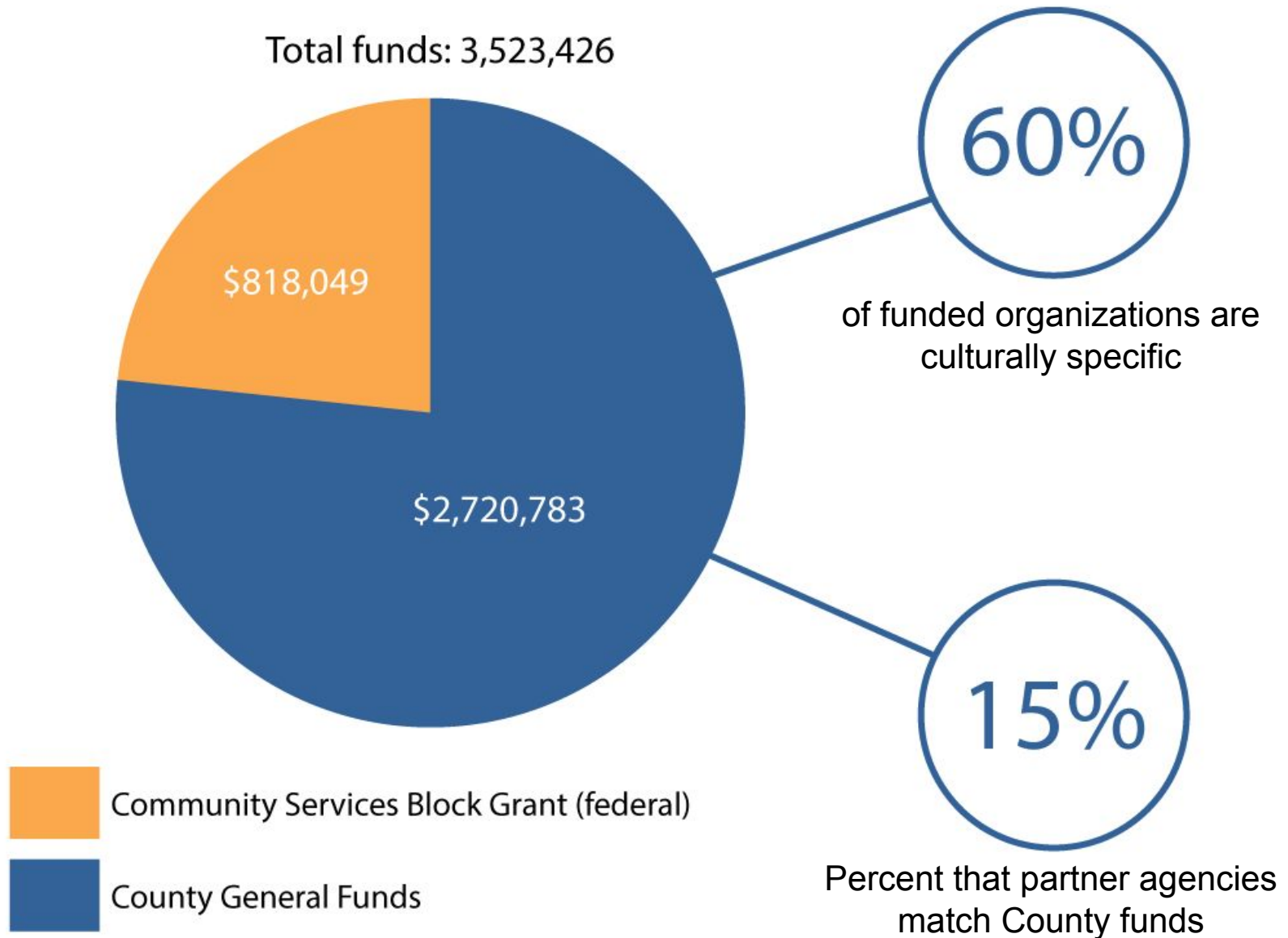




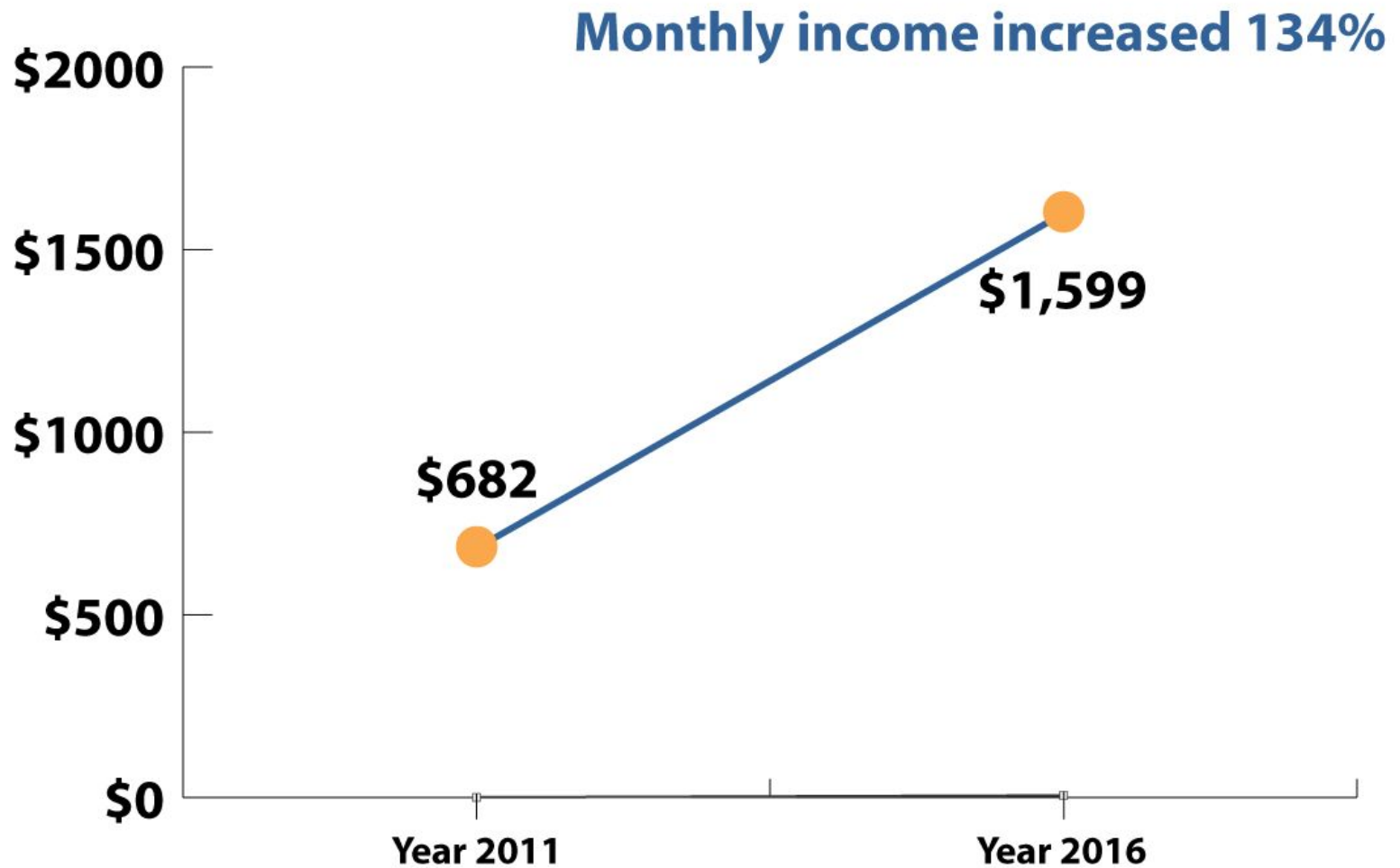
# Leveraging other programs



# Investments in MSI

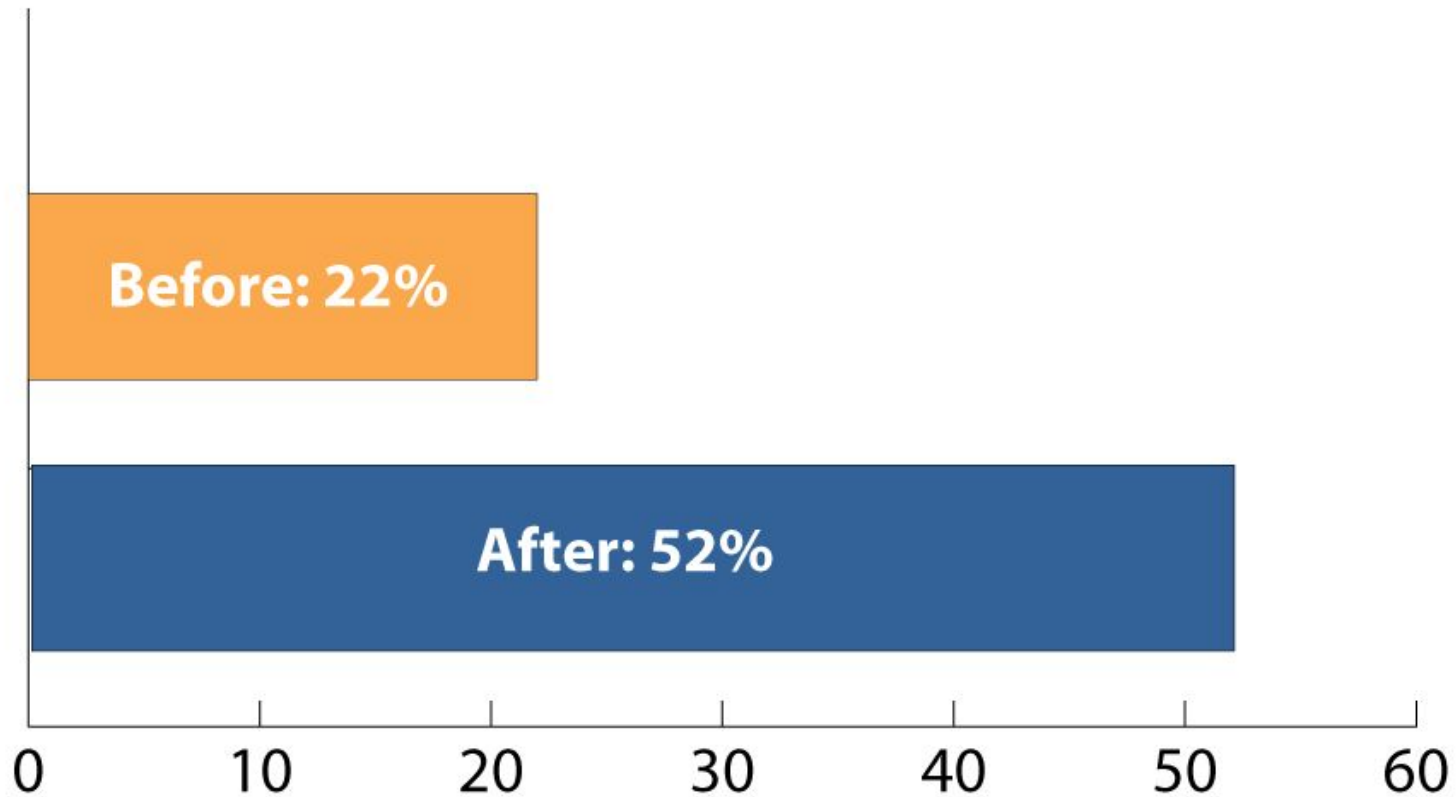


# MSI Pilot: Monthly Income Results



# MSI Pilot: Employment Results

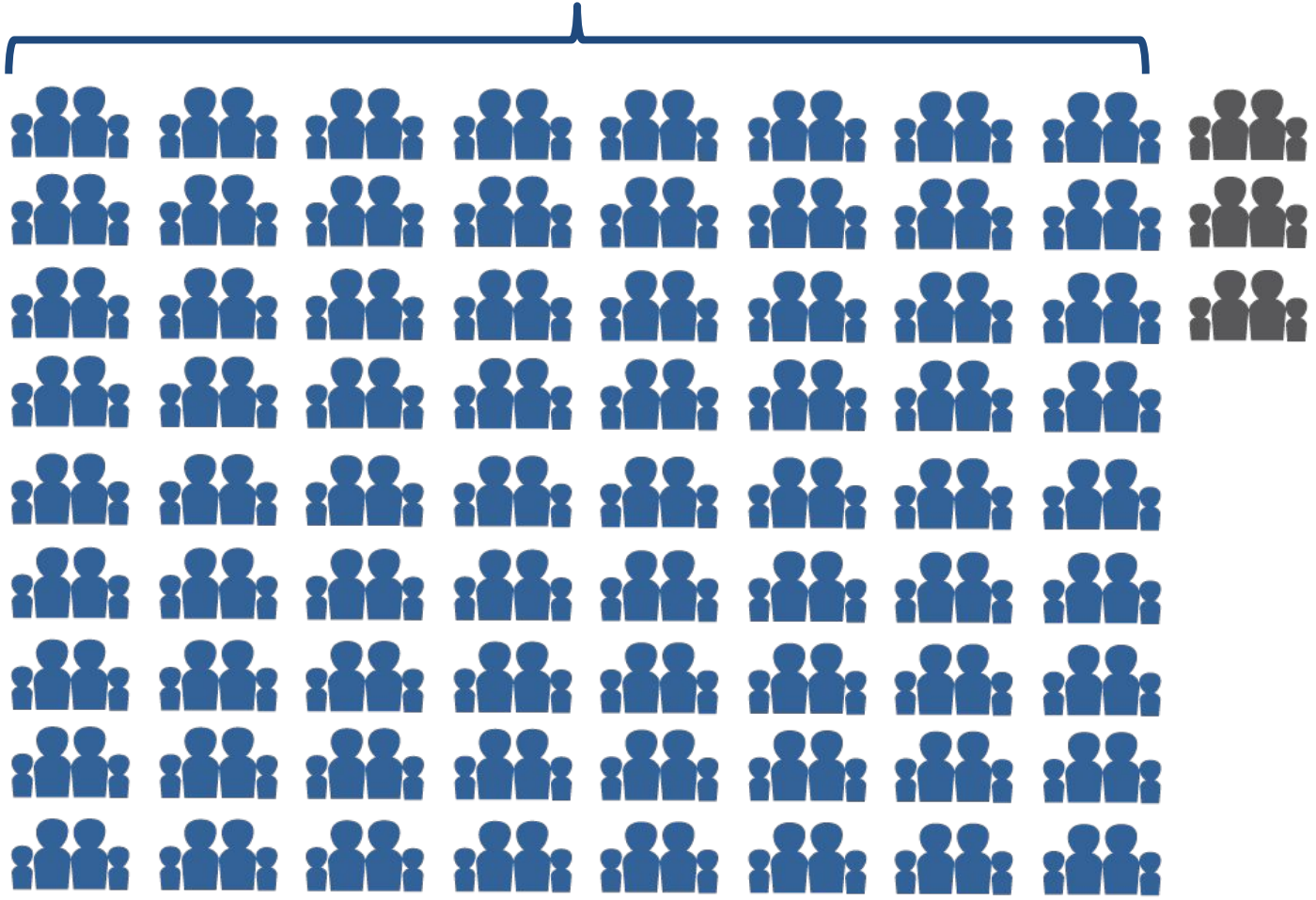
**Percent of clients employed before and after MSI pilot**



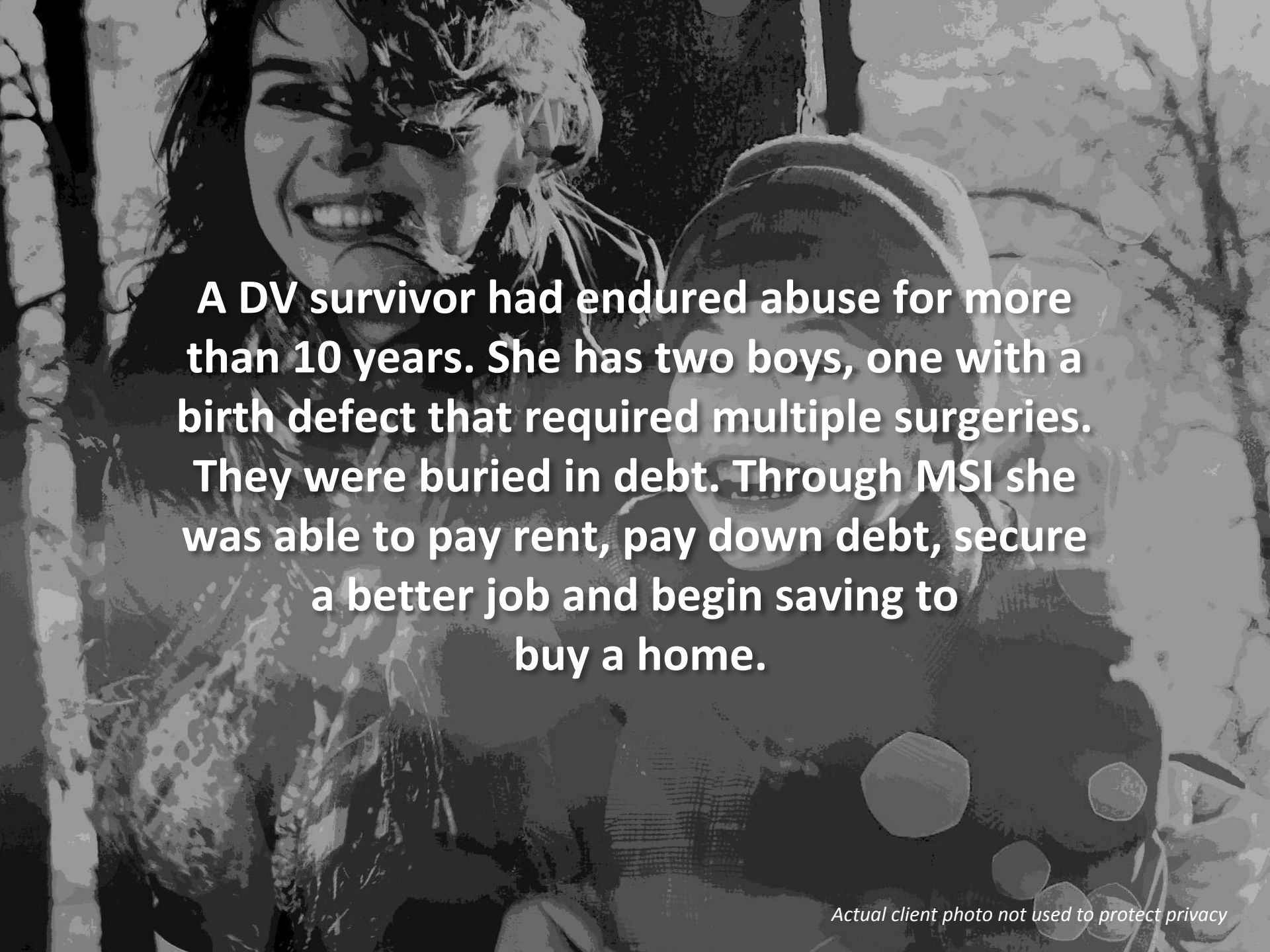
# MSI Pilot: Stable Housing Results

96% have stable homes 6 months after MSI.

750  
families  
served



 = 10 MSI families



**A DV survivor had endured abuse for more than 10 years. She has two boys, one with a birth defect that required multiple surgeries. They were buried in debt. Through MSI she was able to pay rent, pay down debt, secure a better job and begin saving to buy a home.**

*Actual client photo not used to protect privacy*



# Join us at an Assertive Engagement training!

## May

AE 101: Monday 5/15, Tuesday 5/16, and Tuesday 5/23

## June

AE 101: Thursday 6/22, Friday 6/23, and Friday 6/30

AE Refresher: Thursday 6/29

## July/August

AE 101: Tuesday 7/25, Wednesday 7/26, and  
Wednesday 8/1

