

NORTH 

SCALE: 1" = 50'

SITE PLAN

LRS
ARCHITECTS
www.lrsarchitects.com

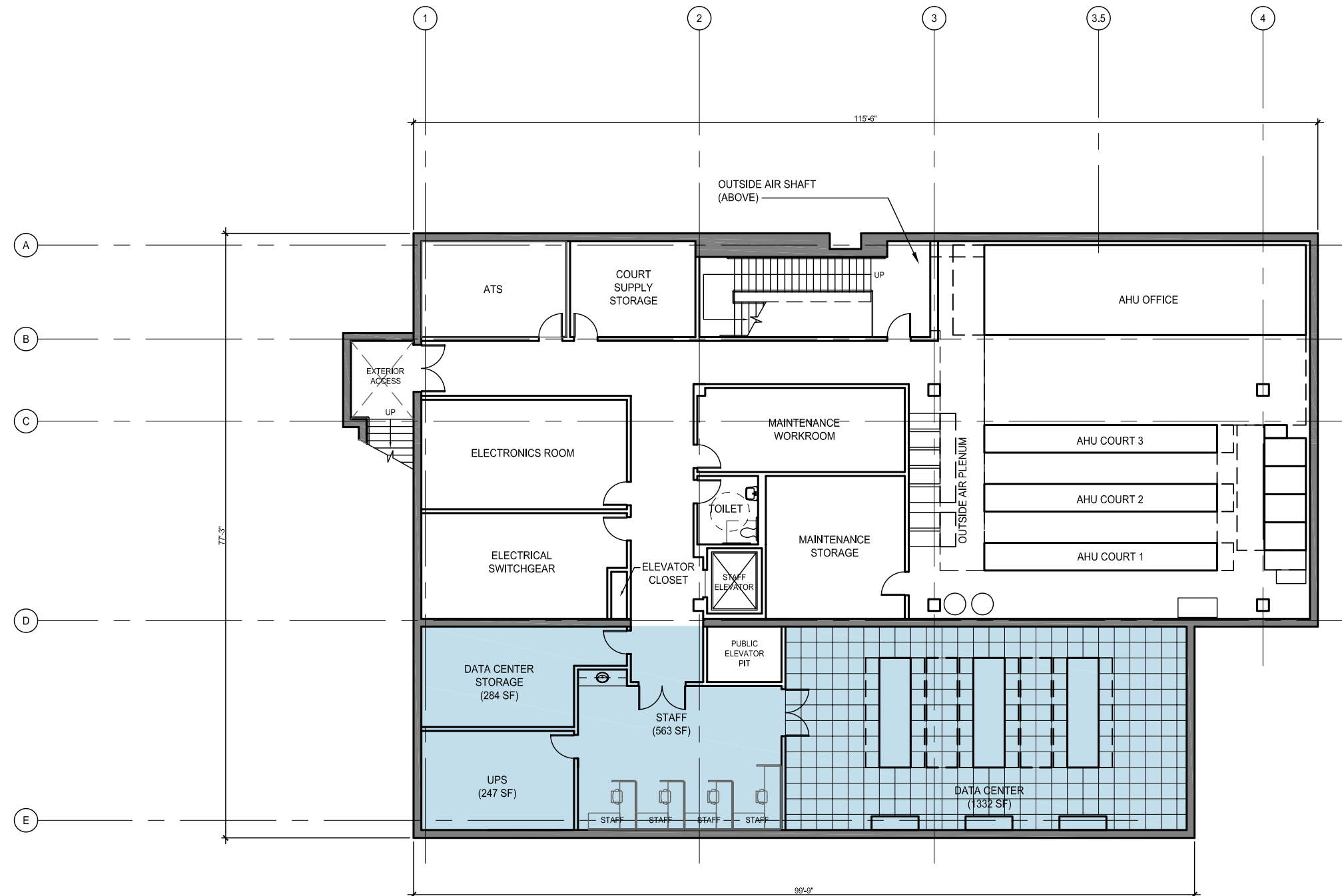
720 NW Davis
Suite 300
Portland OR 97209
503.221.1121 📞
503.221.2077 📠

**MULTNOMAH COUNTY
EAST COUNTY COURTS**

SE STARK & SE 185TH
GRESHAM, OREGON

PROJECT NAME: *MULT. CO. EAST COURTS*
PROJECT NUMBER: *209285*
DATE ISSUED: *AUGUST 10, 2010*
REVISION:

SHEET:



BASEMENT PLAN

BASEMENT = 5,897 SF
 DATA CENTER = 2,426 SF
 TOTAL BASEMENT = 8,323 SF

SCALE: 1/16" = 1'-0"

BASEMENT FLOOR PLAN (WITH DATA CENTER)

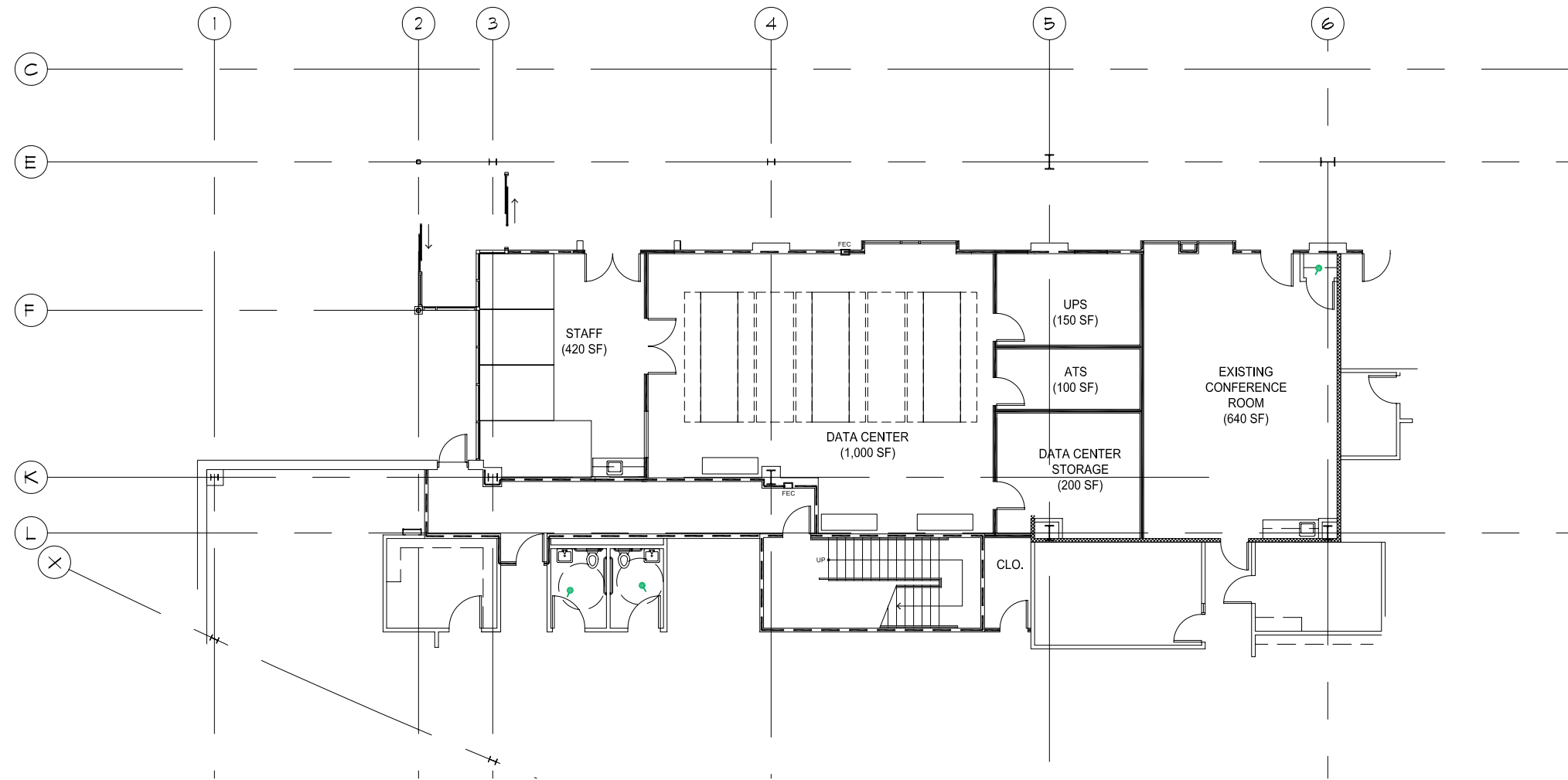
LRS
 ARCHITECTS
 www.lrsarchitects.com
 720 NW Davis
 Suite 300
 Portland OR 97209
 503.221.1121
 503.221.2077

**MULTNOMAH COUNTY
 EAST COUNTY COURTS**

SE STARK & SE 185TH
 GRESHAM, OREGON

PROJECT NAME: MULT. CO. EAST COURTS
 PROJECT NUMBER: 209285
 DATE ISSUED: JULY 07, 2010
 REVISION:

SHEET:



Data Center - Multnomah County East

B I

SCALE: 1/16"=1'-0"