



**Multnomah County**

Department of Community Services  
Land Use & Transportation Program

***Code Compliance***

**Code Compliance Program Briefing**  
to the  
**Board of County Commissioners**

November 16, 2010

# **Code Compliance Program Briefing**

- Background and Philosophy
- Benefits of Code Compliance
- Operations Summary
- Review of Fiscal Year 2009-10 Activity

# [ Background and Philosophy ]

- Current program started in May 2004.
- Program philosophy
  - ❑ ***Voluntary Compliance***
  - ❑ *Complaint based*
  - ❑ *Non-revenue generating*

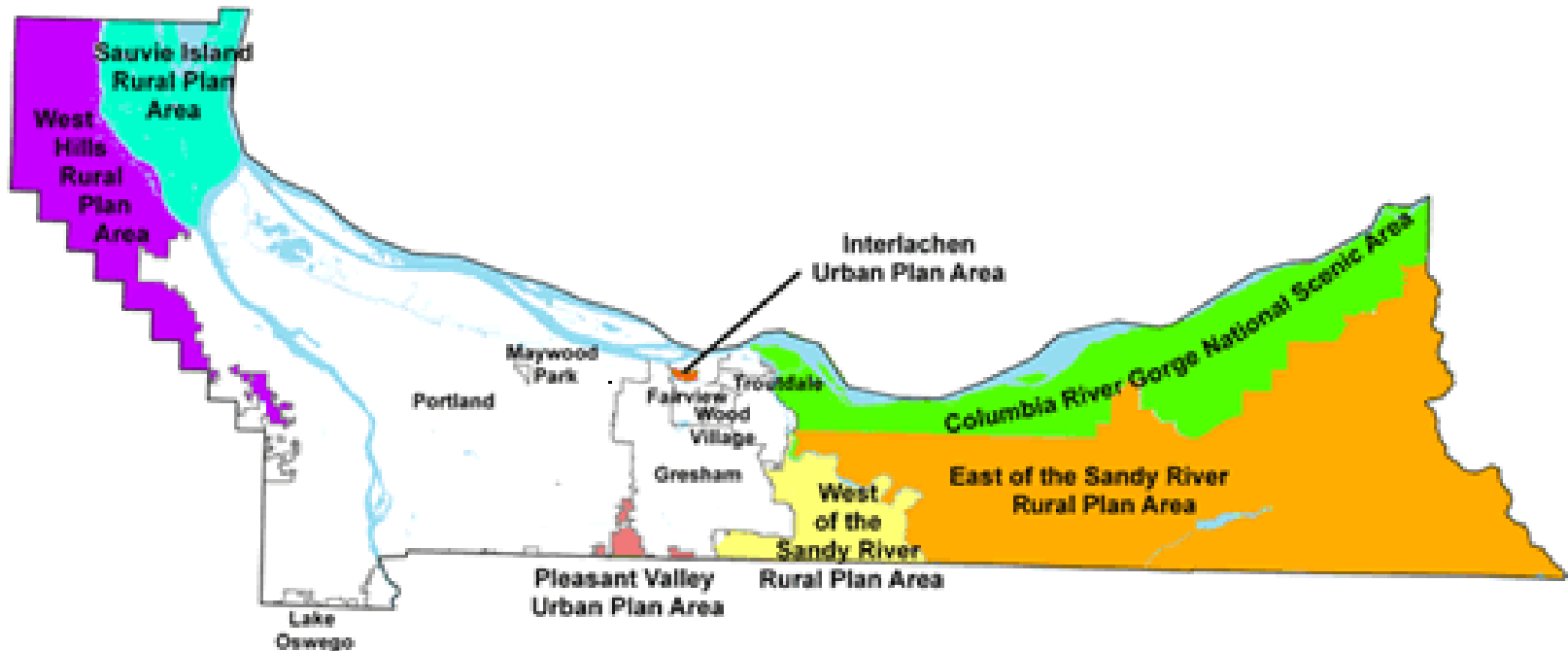
# Benefits of Code Compliance

Protect and Preserve our rural lands.



# Operations Summary- Jurisdiction

- Multnomah County Rural/Urban unincorporated areas
- Multnomah County maintained public right-of-ways



# **Operations Summary- Agency Coordination**

- Coordination with:
  - ❑ other Multnomah County offices
  - ❑ local City jurisdictions
  - ❑ Columbia River Gorge Commission
  - ❑ State and Federal Agencies

# Operations Summary-

## Case Priority Criteria

- Significant Environmental Impact
- Public Health, Safety and Welfare
  - including Right-of-Way (ROW)
- Property Owner request to resolve a complaint or a violation.



# Case Priority Criteria Categories- Significant Environmental Impact





# [ Case Priority Criteria Categories- Public Health, Safety & Welfare ]



# Case Priority Criteria Categories- Right-of-Way & Public Safety





# [ Case Priority Criteria Categories- Owner Request for Resolution ]



# Fiscal Year Review- Performance Measures

- Number of Cases resolved without enforcement (Goal = 100%).

**FY 09-10 = 100% (60 of 60)**

*FY 08-09 = 99% (71 of 72)*

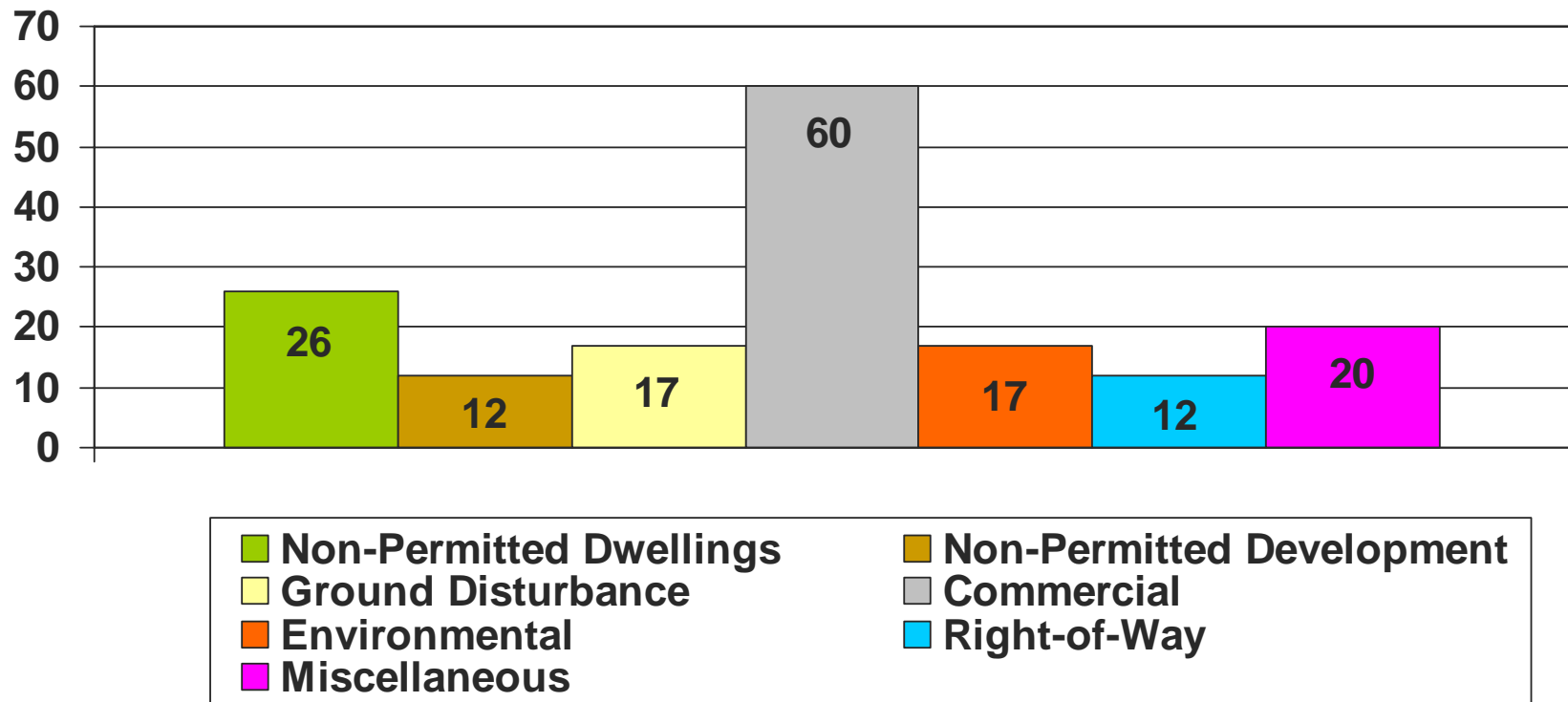
- Number of Complaints received.

**FY 09-10 = 164**

*FY 08-09 = 106*

# Fiscal Year Review- Complaint Trends

## 164 Total Complaints Received



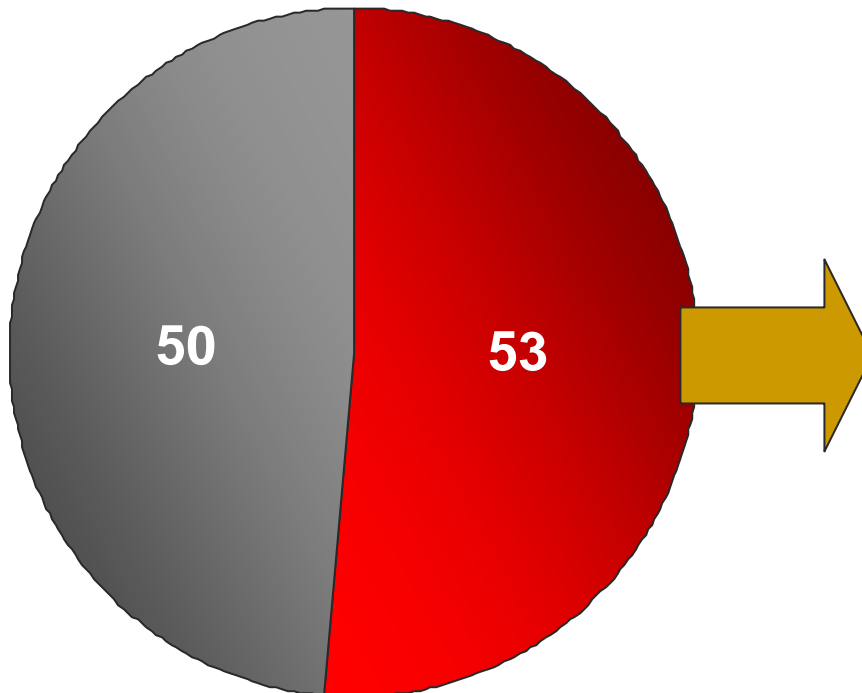
# Fiscal Year Review- New Cases

- The 164 complaints received resulted in 103 new compliance cases being opened.
  - ❑ 94 – Land Use Complaint cases
  - ❑ 9 – Right-of-Way cases



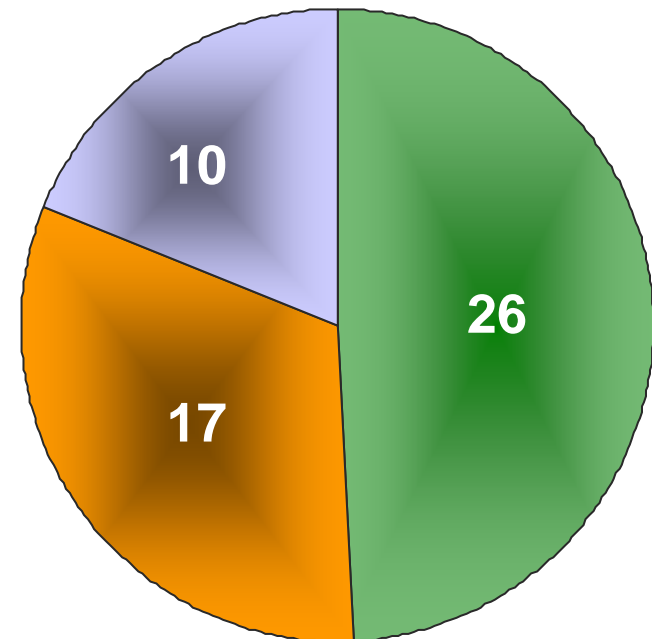
# Fiscal Year Review- New Case Criteria Breakdown

New Case Categories



■ Active Priority Cases  
■ Non-Priority Cases

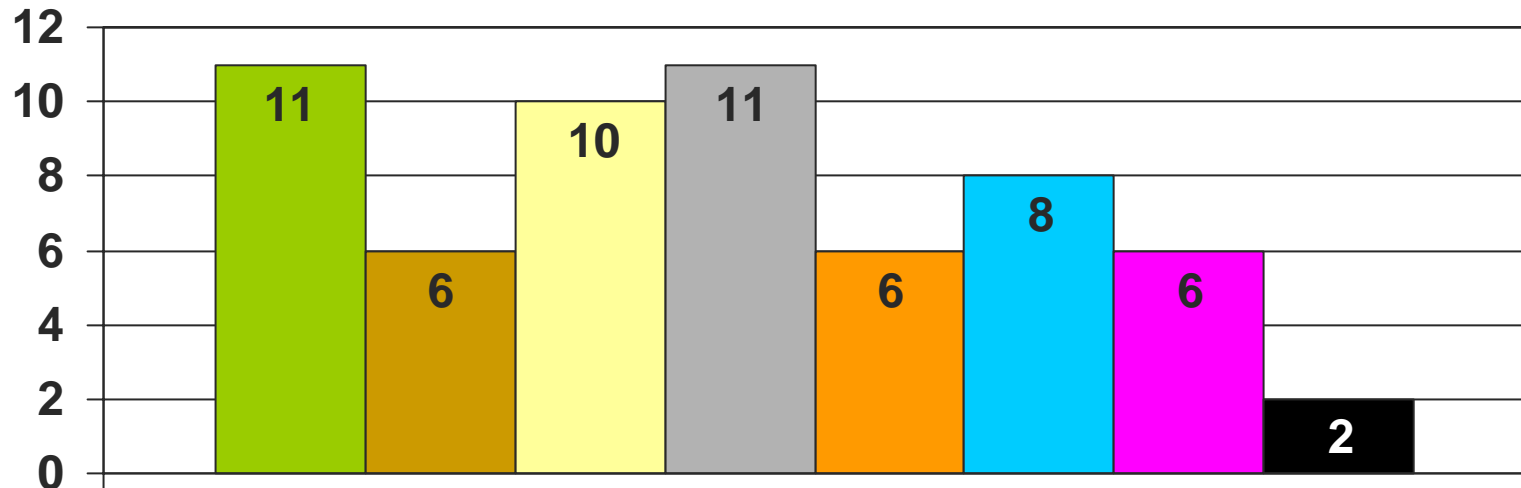
Types of Priority Cases



■ Environmental  
■ Safety/Welfare/ROW  
■ Owner Request

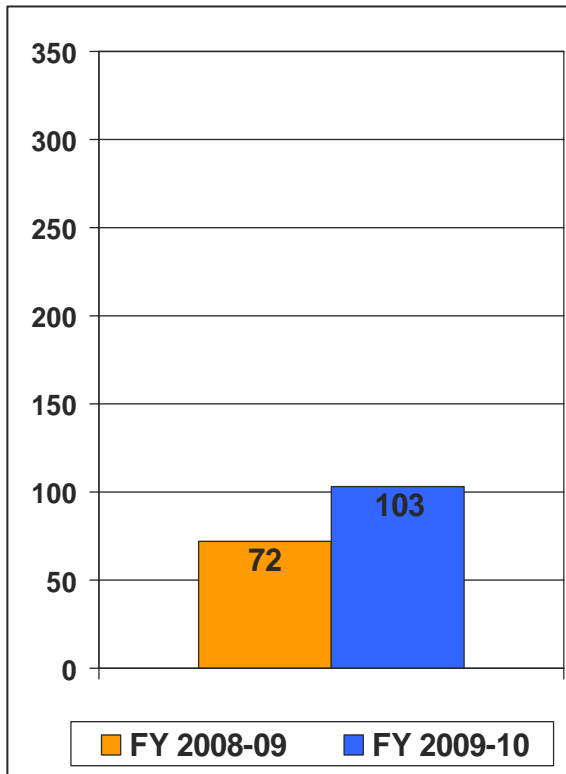
# Fiscal Year Review- Closed Cases

60 – Total Closed Cases

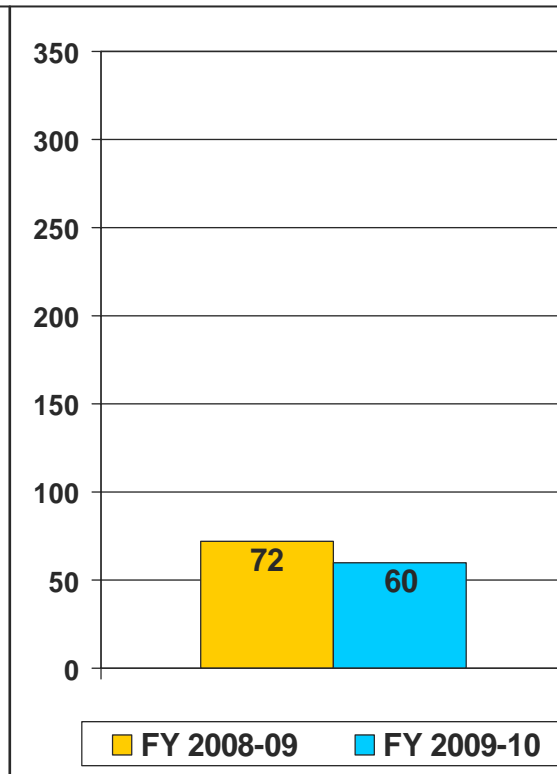


# Fiscal Year Review- Case Load Trend

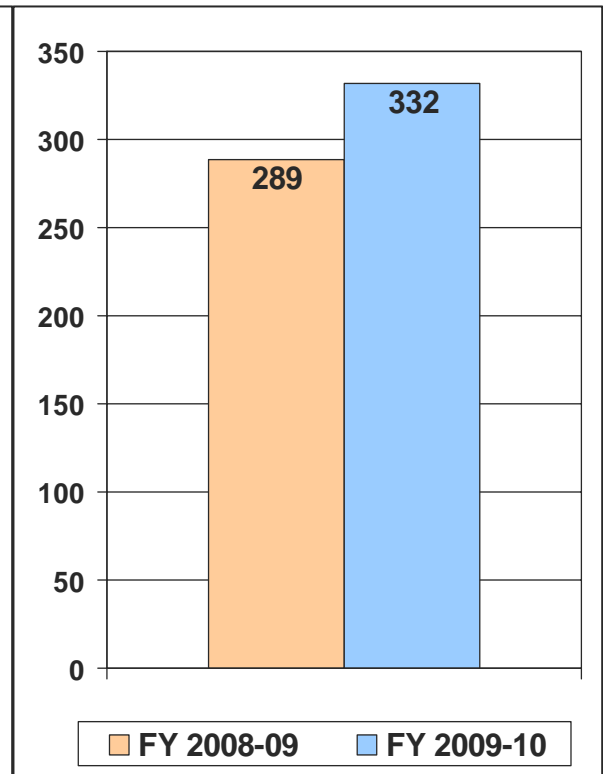
## New Cases



## Closed Cases



## Total Case Files



# [ Looking Forward ]

- Continue with our philosophy of Voluntary Compliance and owner education.
- Continue to address priority cases as they are received.
- Continue to work on the reduction of pending cases.

***Thank You***

