

# MULTNOMAH COUNTY INTERFAITH INITIATIVE

Overview of Faith-based Community Landscape

# MULTNOMAH COUNTY INTERFAITH INITIATIVE

Collaboration among communities of faith, social service providers, community organizations, and the County to promote:

**SOCIAL JUSTICE:** Equity and dignity for those disenfranchised from our community.

**PEACE & NONVIOLENCE:** Opportunities to end all types of abuse and violence.

**STEWARDSHIP & SUSTAINABILITY:** Actions to support the environment and champion community health and wellness.

**PLURALISM:** Respect for diversity of beliefs, and community integration without the expectation of assimilation

# DEMOGRAPHICS OF BELIEF

- In 2010, 64% of residents in the Portland Metro Area consider themselves religious or spiritual.

25% identify as religious

39% identify as spiritual

17% identify as agnostic

10% identify as atheist

8% say they are confused

- In 1985, the Oregonian reported that 96% of Portland residents said they believed in God, a universal spirit, or both.
- 33% of adults age 18 to 34 consider themselves “religious”

Source: 2010 U.S. Religion Census, Rank by Ratio of Adherents  
Courtesy of Portland Monthly, September 20, 2012

# ATTITUDE TOWARD RELIGION LOCALLY

When asked about religion:

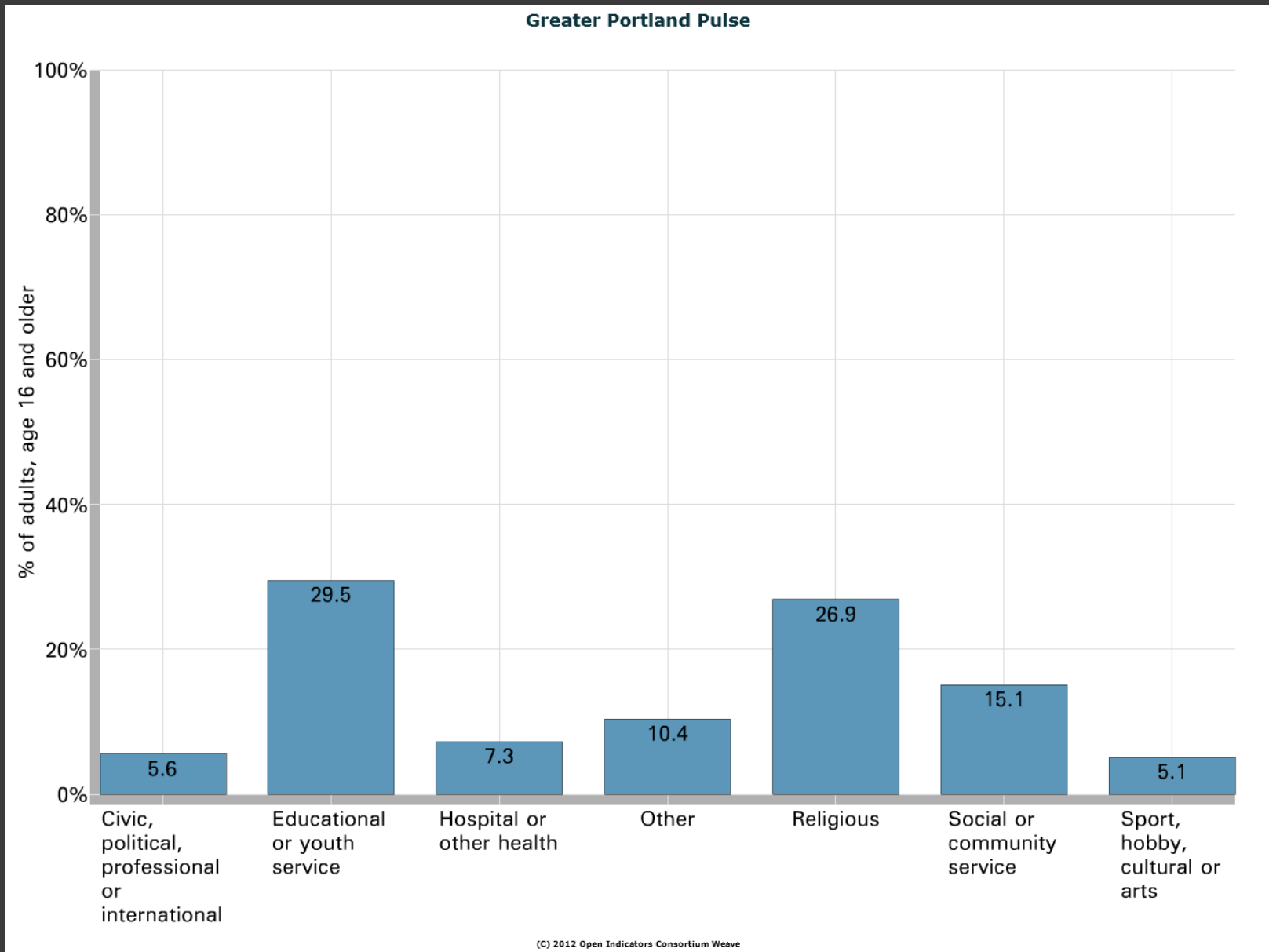
- 18% believe it is generally a negative force in society
- 47% believe it is equally good and bad in its impact on society
- 35% believe it is generally a positive force in society

## Religious Participation

- 3% Daily
- 20% Weekly
- 26% For Major Religious Holidays
- 51% Never

Source: 2010 U.S. Religion Census, Rank by Ratio of Adherents  
Courtesy of Portland Monthly, September 20, 2012

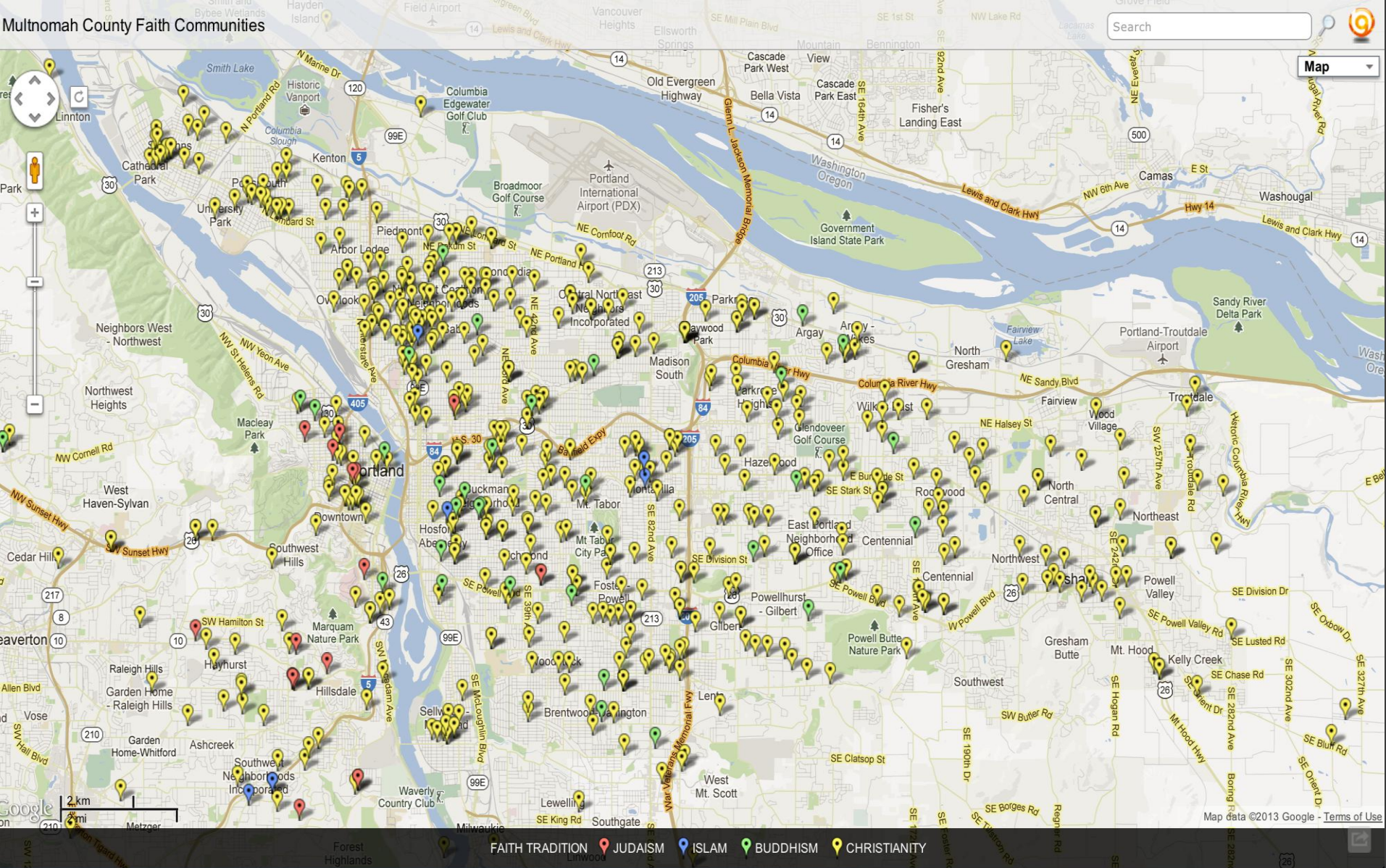
# % of individuals age 16 and older volunteering by organization type, 2010



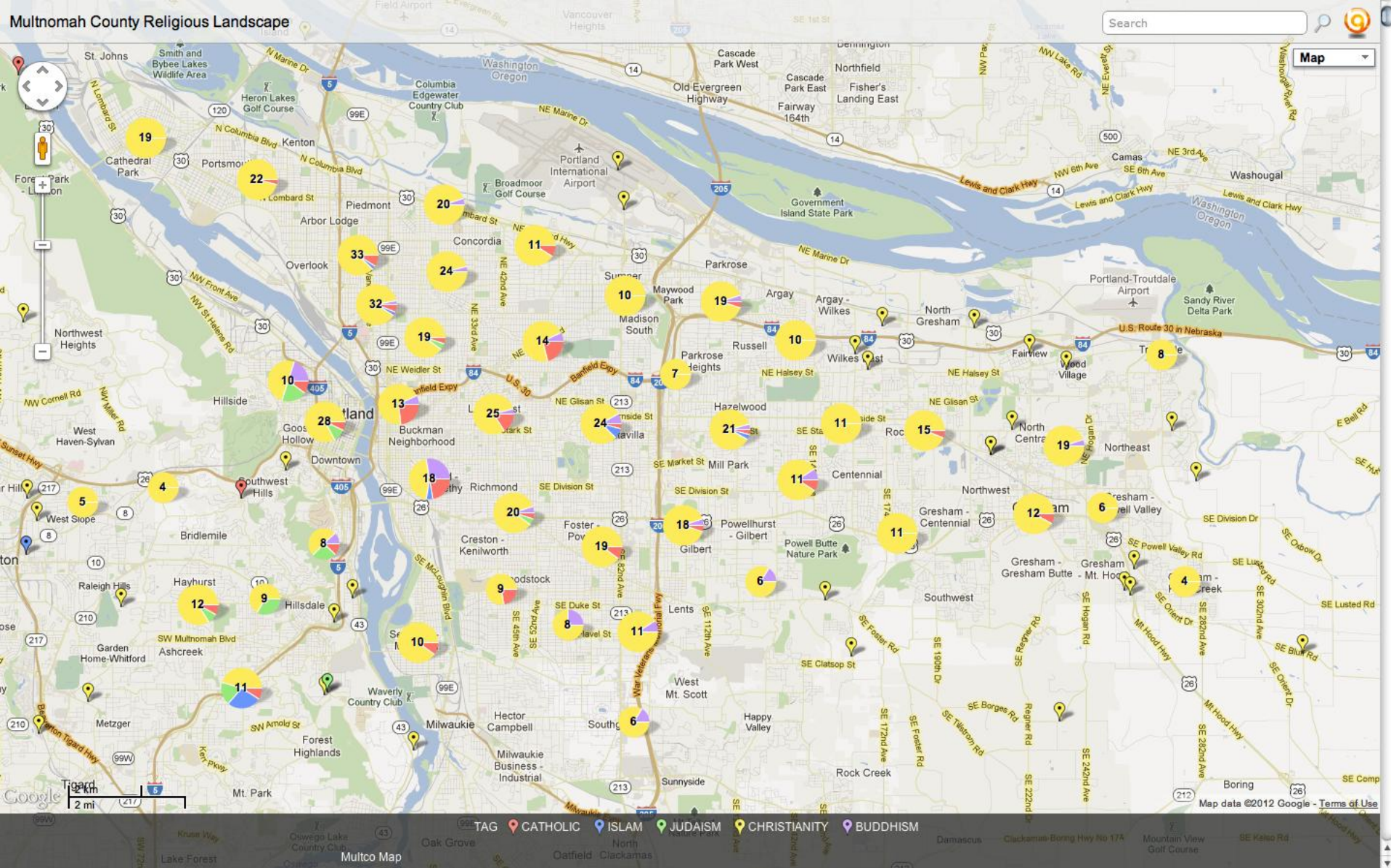
Source: Civic Life in America; Current Population Survey Civic Supplement  
Administered by the U.S. Census Bureau

# FRAMING FAITH COMMUNITIES

- Even from the very beginning, this country has been religiously **diverse and pluralistic**.
- Faith communities are **voluntary** associations.
- Historically, traditions of **social action** have been rooted in religion.
- **Ethnic and cultural identity** are the enduring elements of religion in a secular society.



## Multnomah County Faith Community Landscape



Multnomah County Cluster Map by Faith Tradition

# POLITY AND RELIGIOUS ORGANIZATION

Faith traditions generally have organizational divisions with internal hierarchies or systems of administration.

## CHRISTIANITY

Catholic

Orthodox

Protestant

## ISLAM

Sunni

Shi'a

## JUDAISM

Reform

Reconstructionist

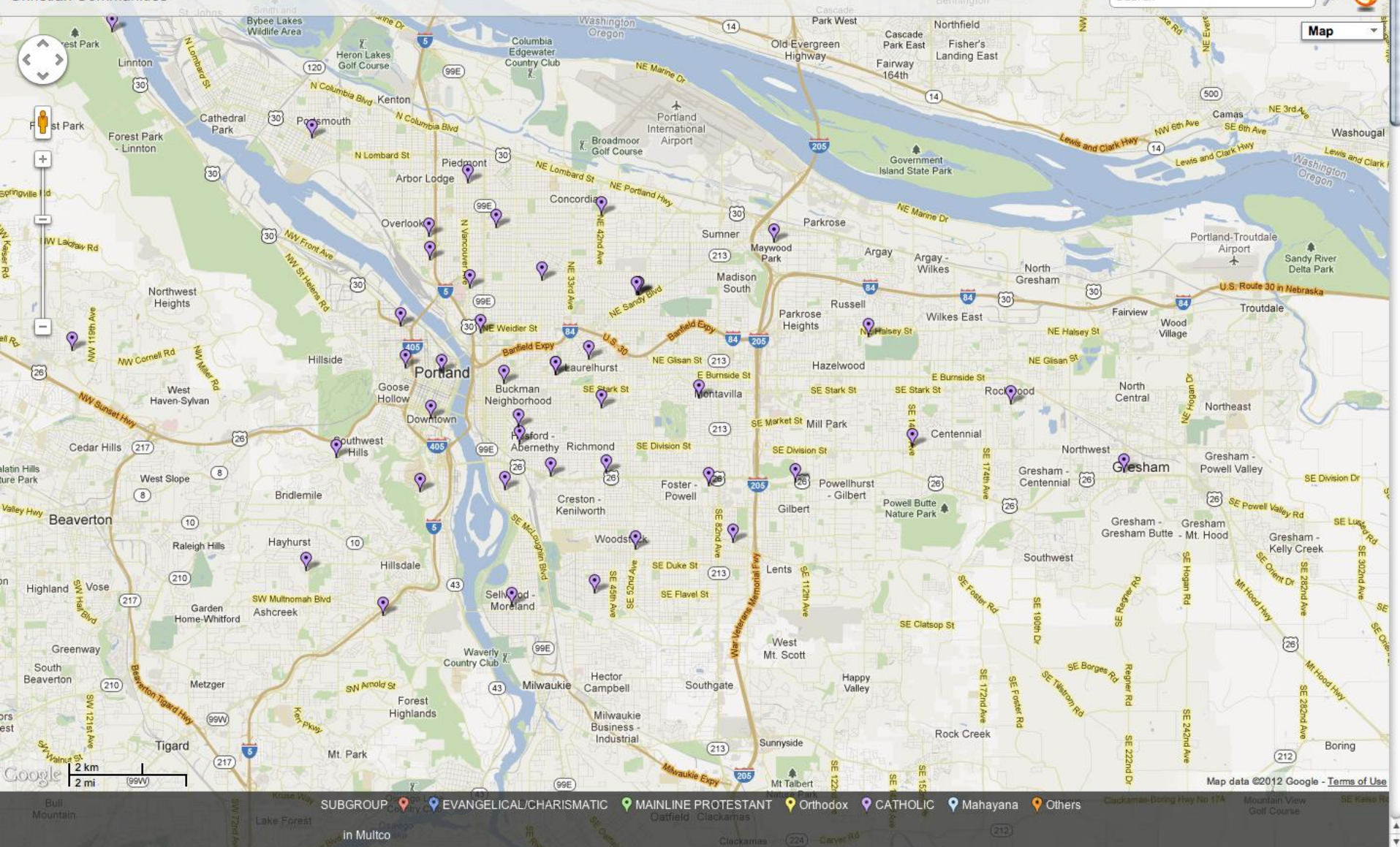
Conservative

Orthodox

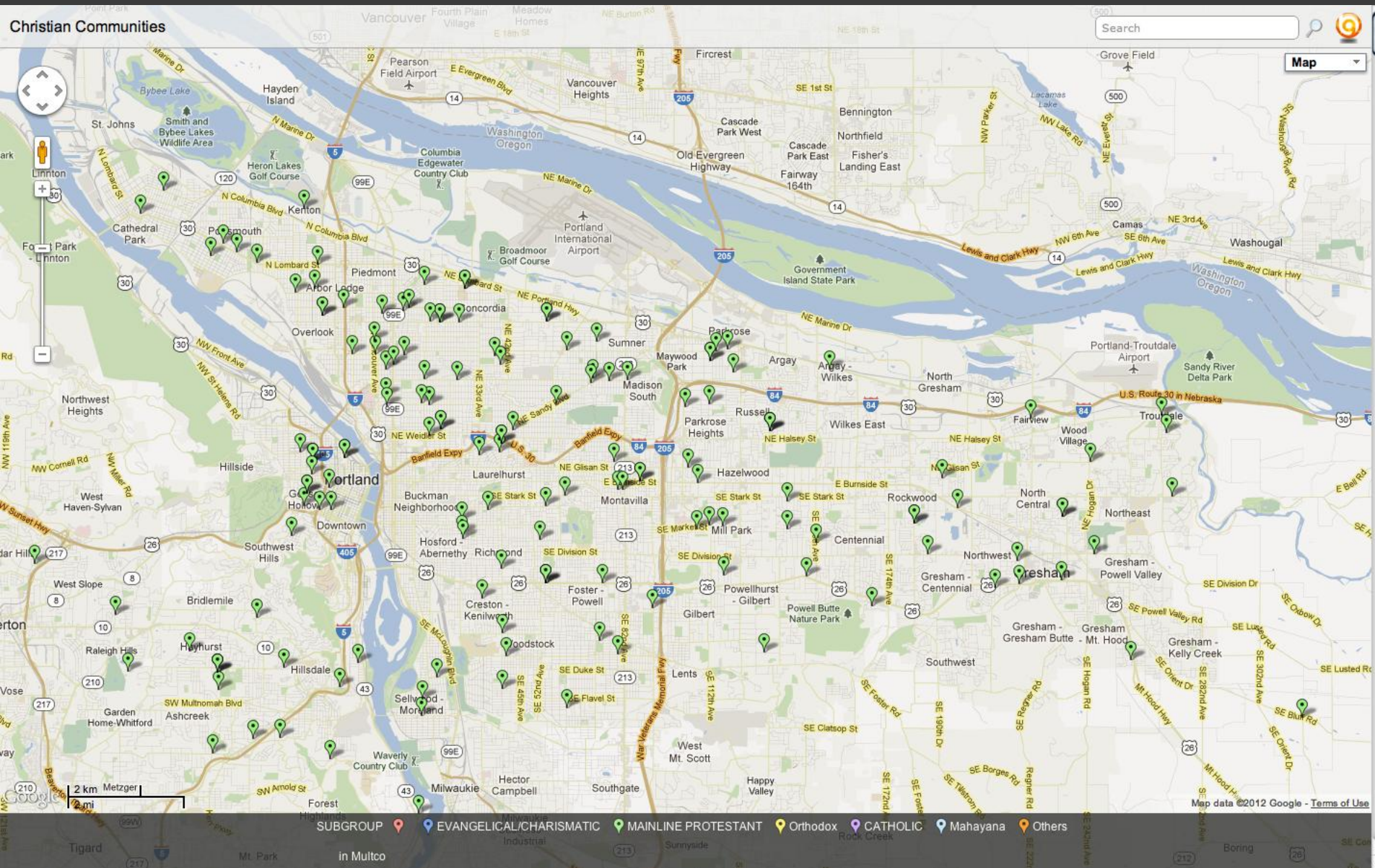
## BUDDHISM

Theravada

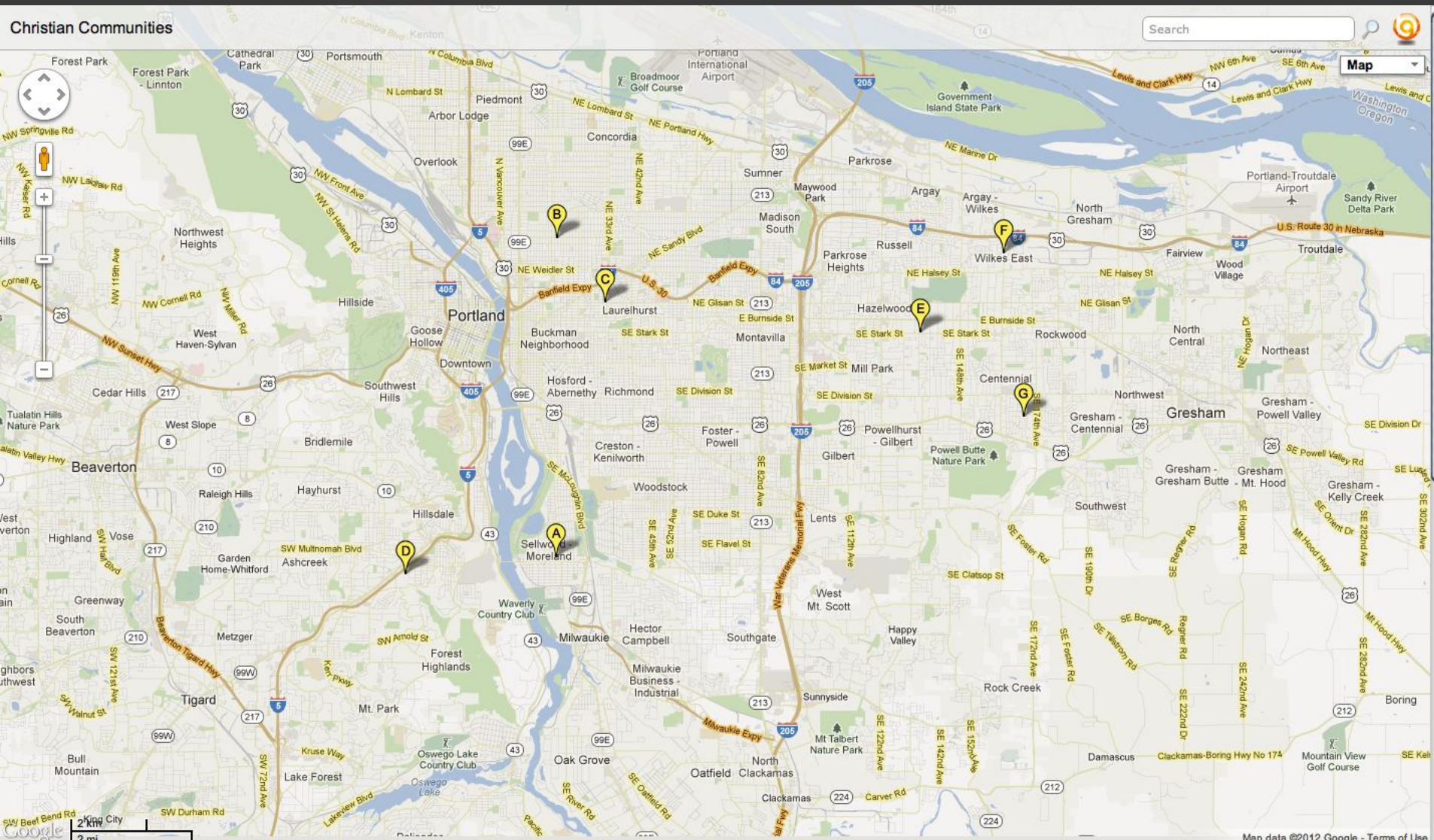
Mahayana



# Catholic Churches in Multnomah County



Mainline Protestant Churches in Multnomah County



SUBGROUP EVANGELICAL/CHARISMATIC MAINLINE PROTESTANT Orthodox CATHOLIC Mahayana Others

in Multco

# Orthodox Christian Churches in Multnomah County

# Religious Modes in Christianity

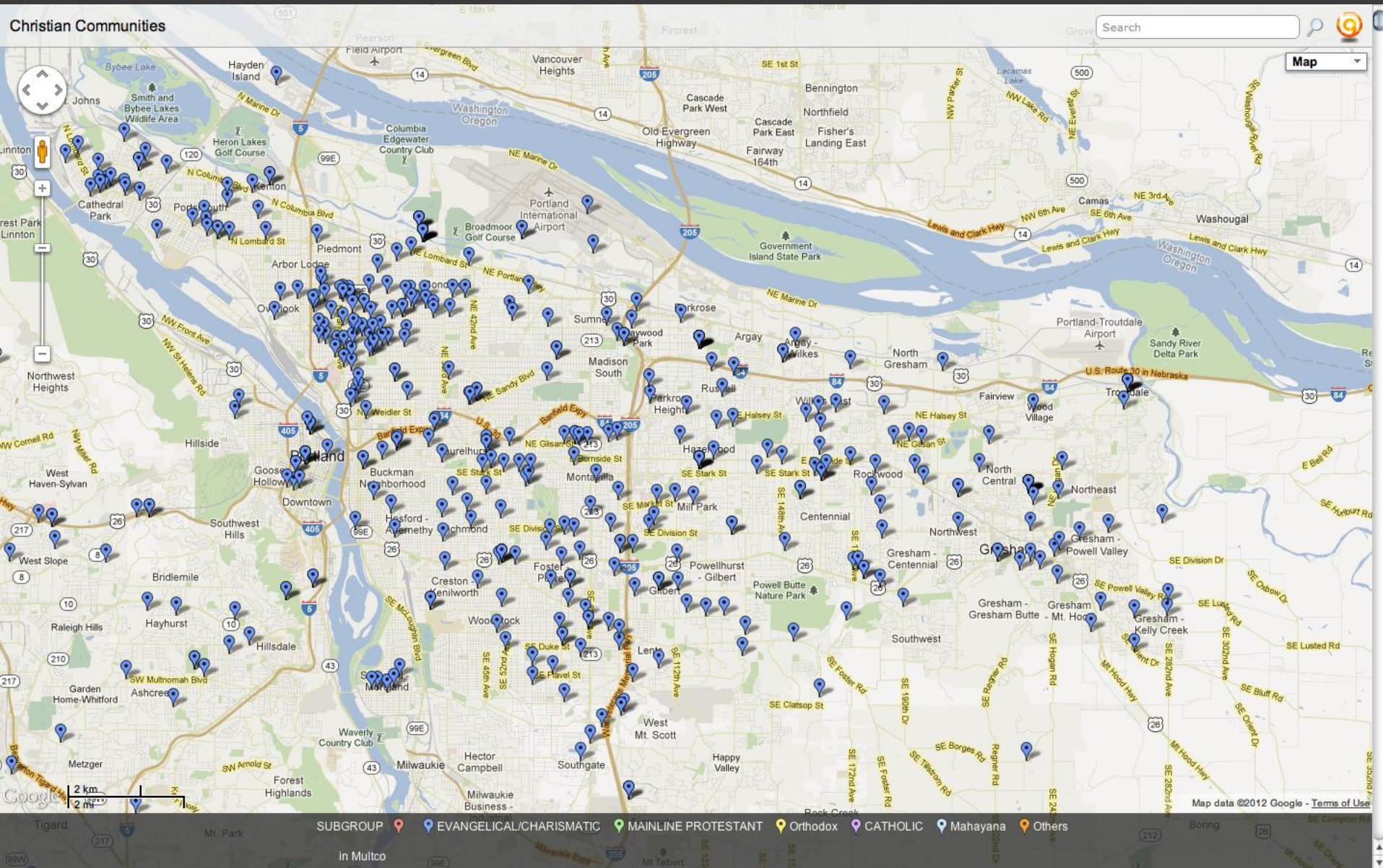
## Charismatic

- Ecstatic expression of faith
- Belief in spiritual gifts or abilities

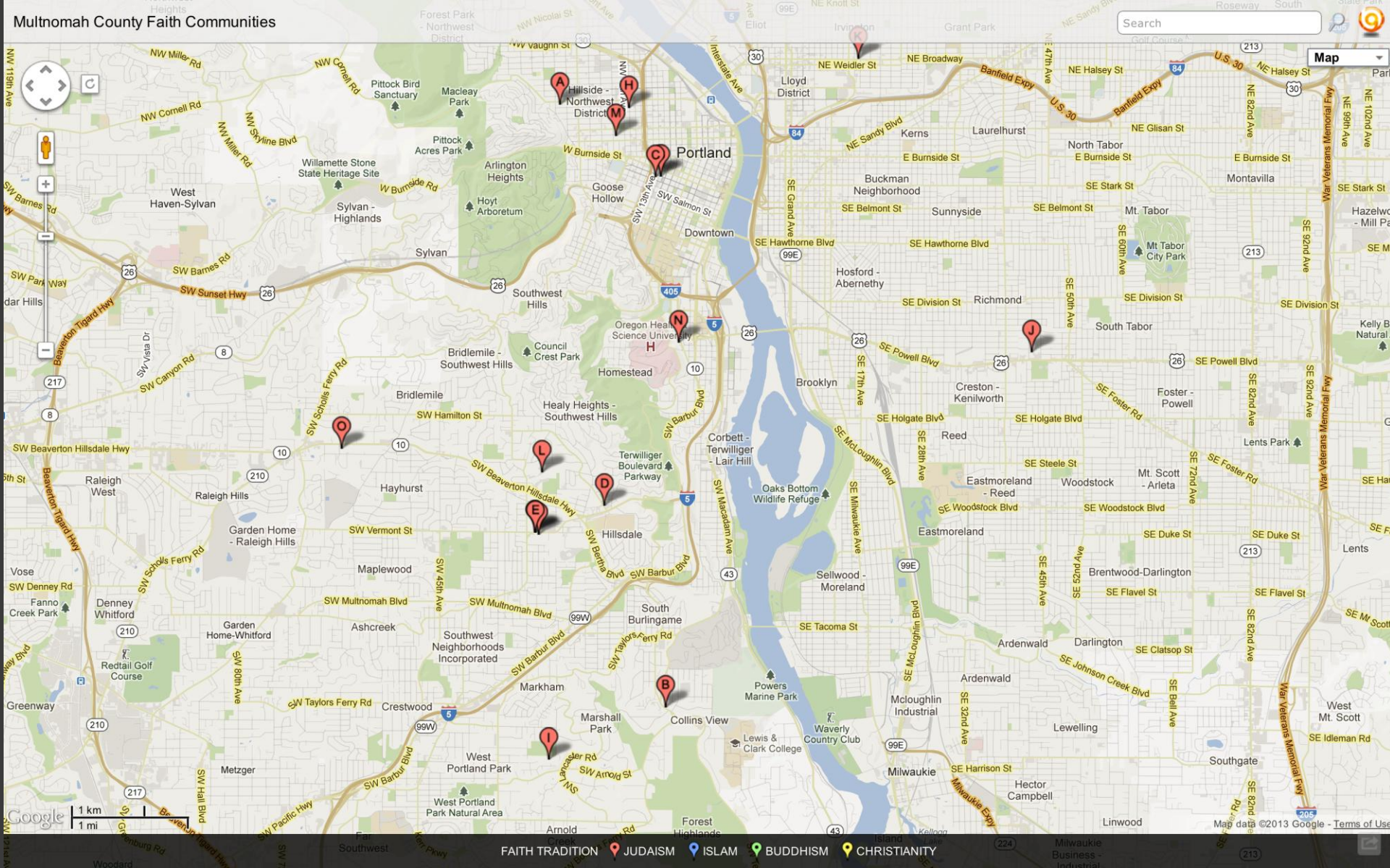
## Evangelical

- Emphasis on conversion experience
- Activism as a tenet of faith
- High regard and obedience to the Bible

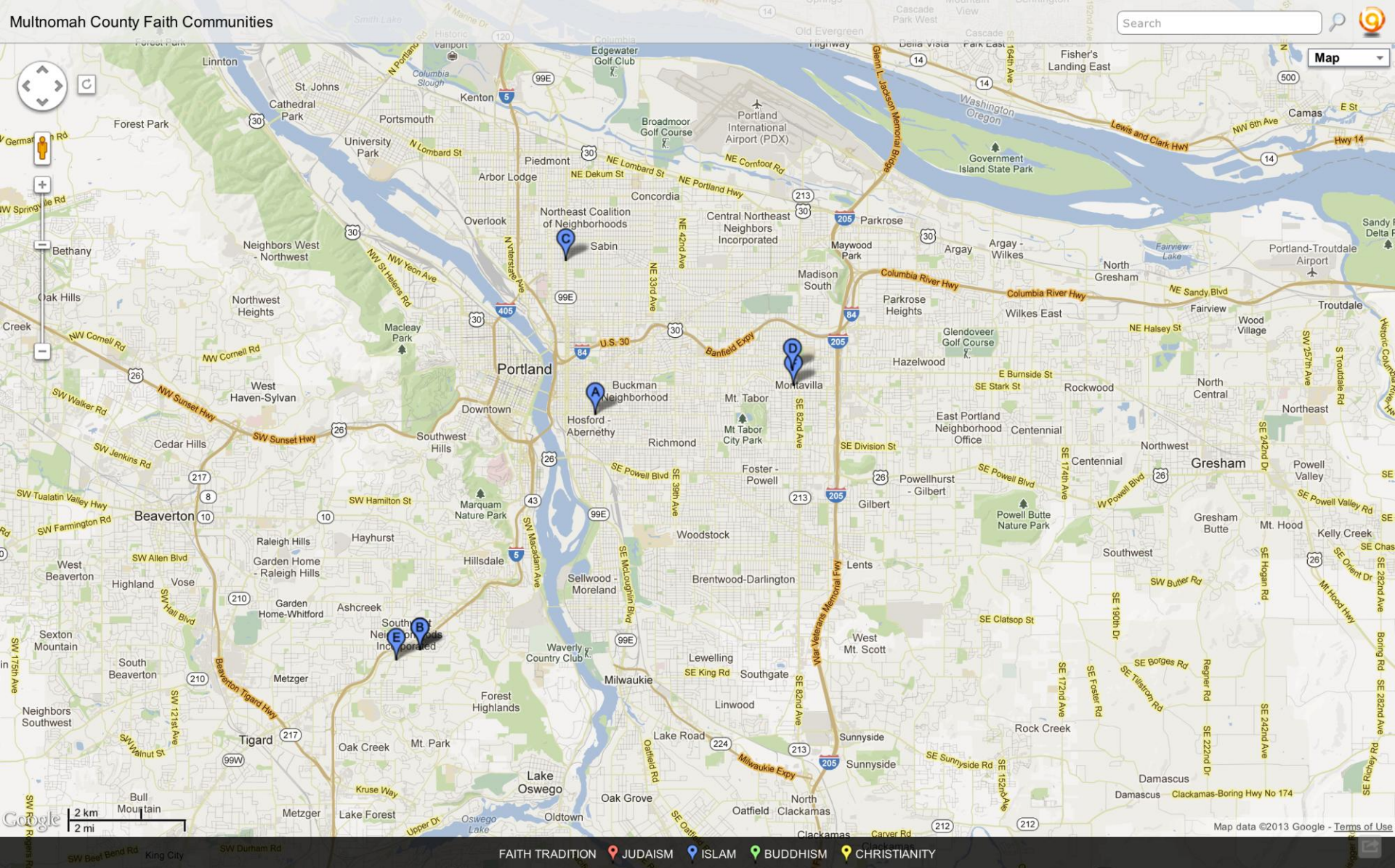
# Christian Communities



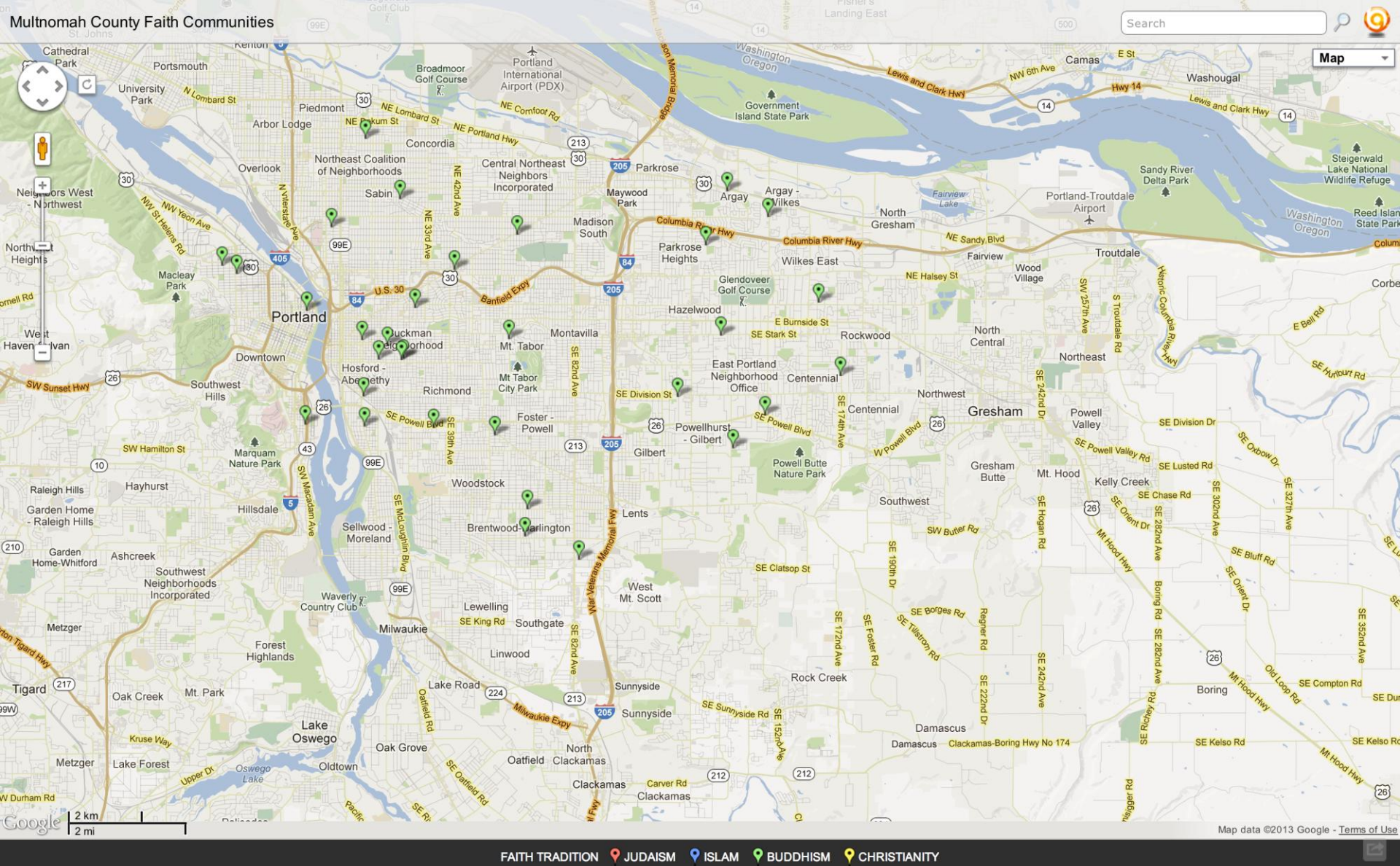
Evangelical and Charismatic Churches in Multnomah County



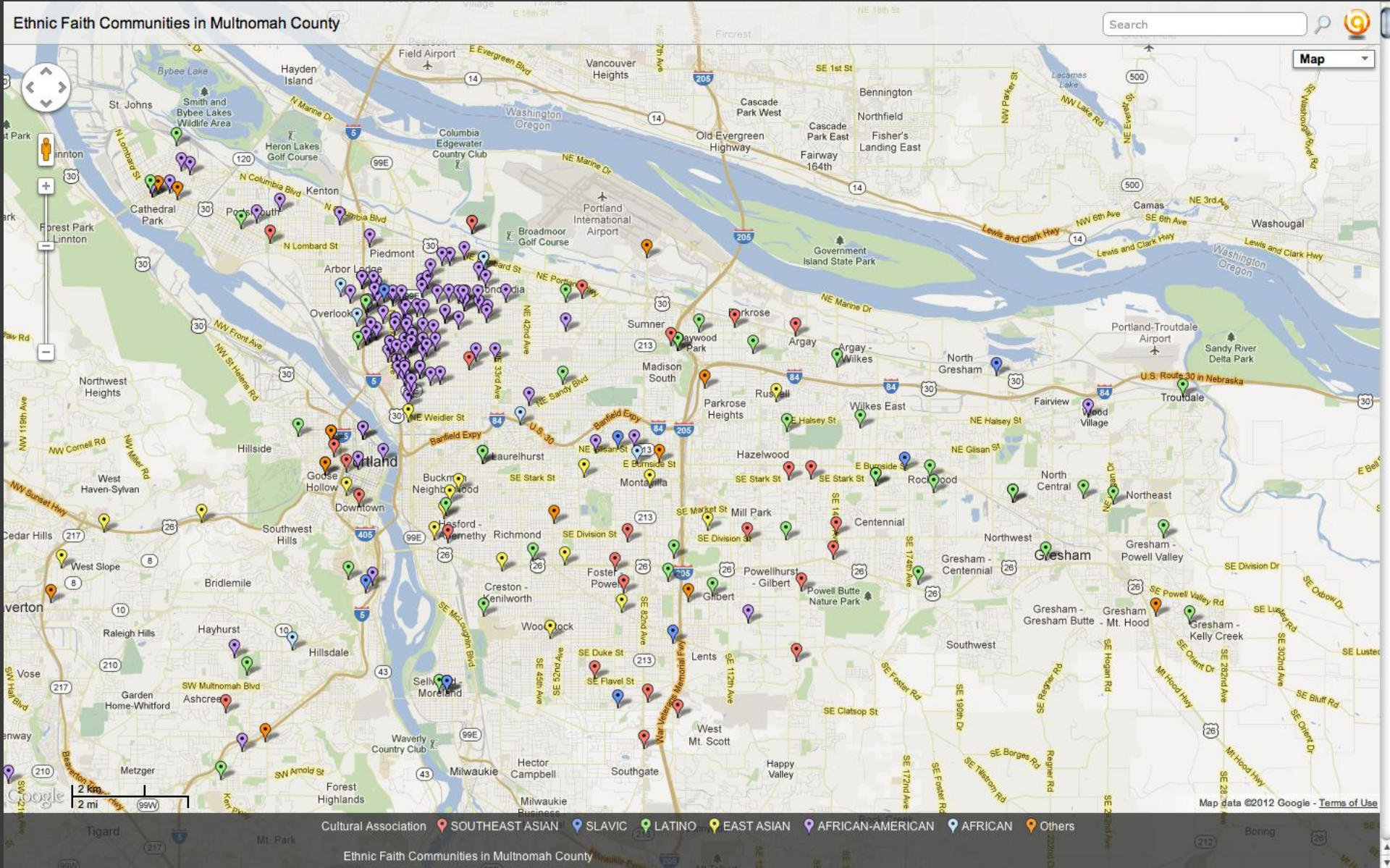
## Jewish Communities in Multnomah County



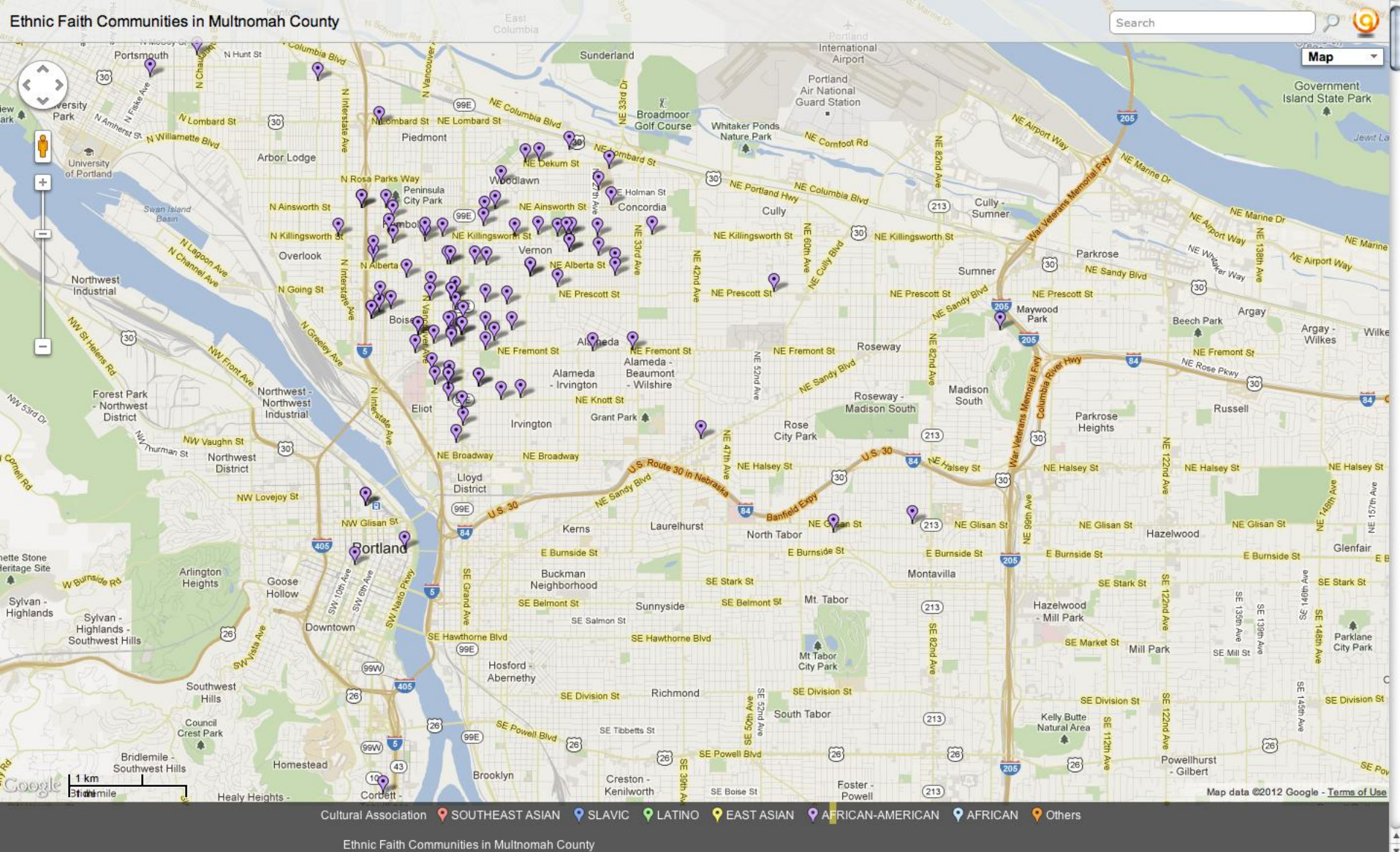
## Muslim Communities in Multnomah County



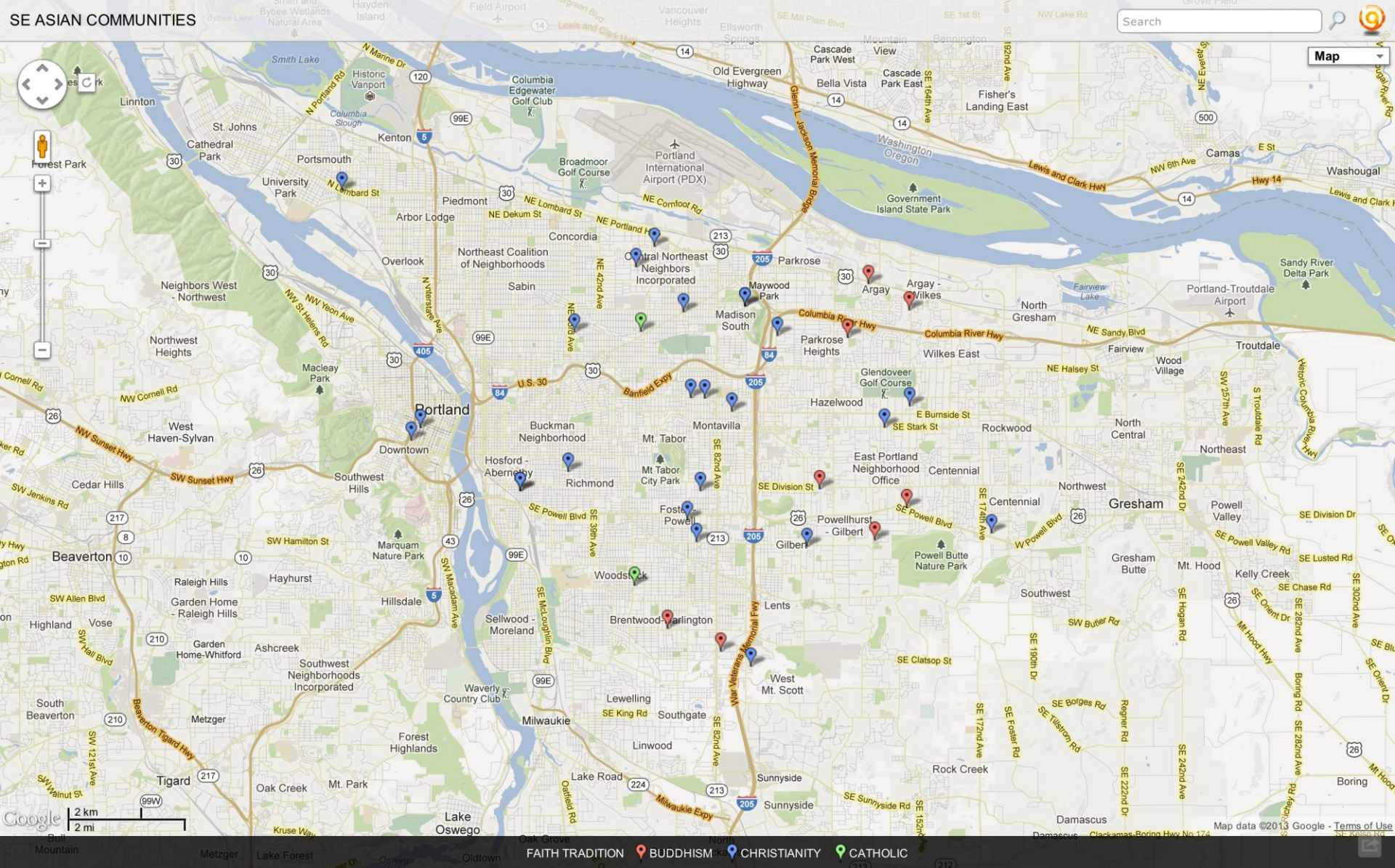
## Buddhist Communities in Multnomah County



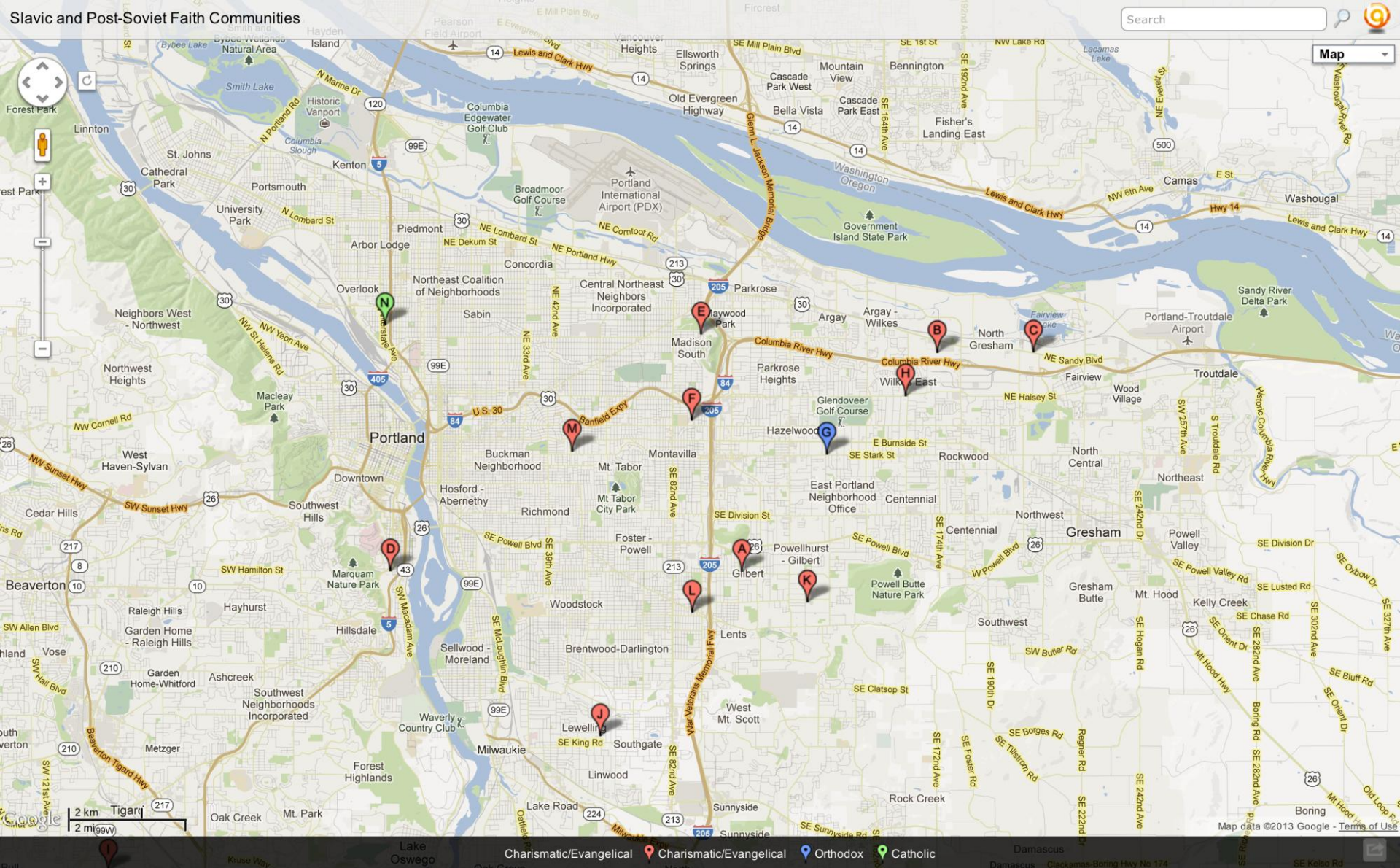
## Ethnic Faith Communities in Multnomah County



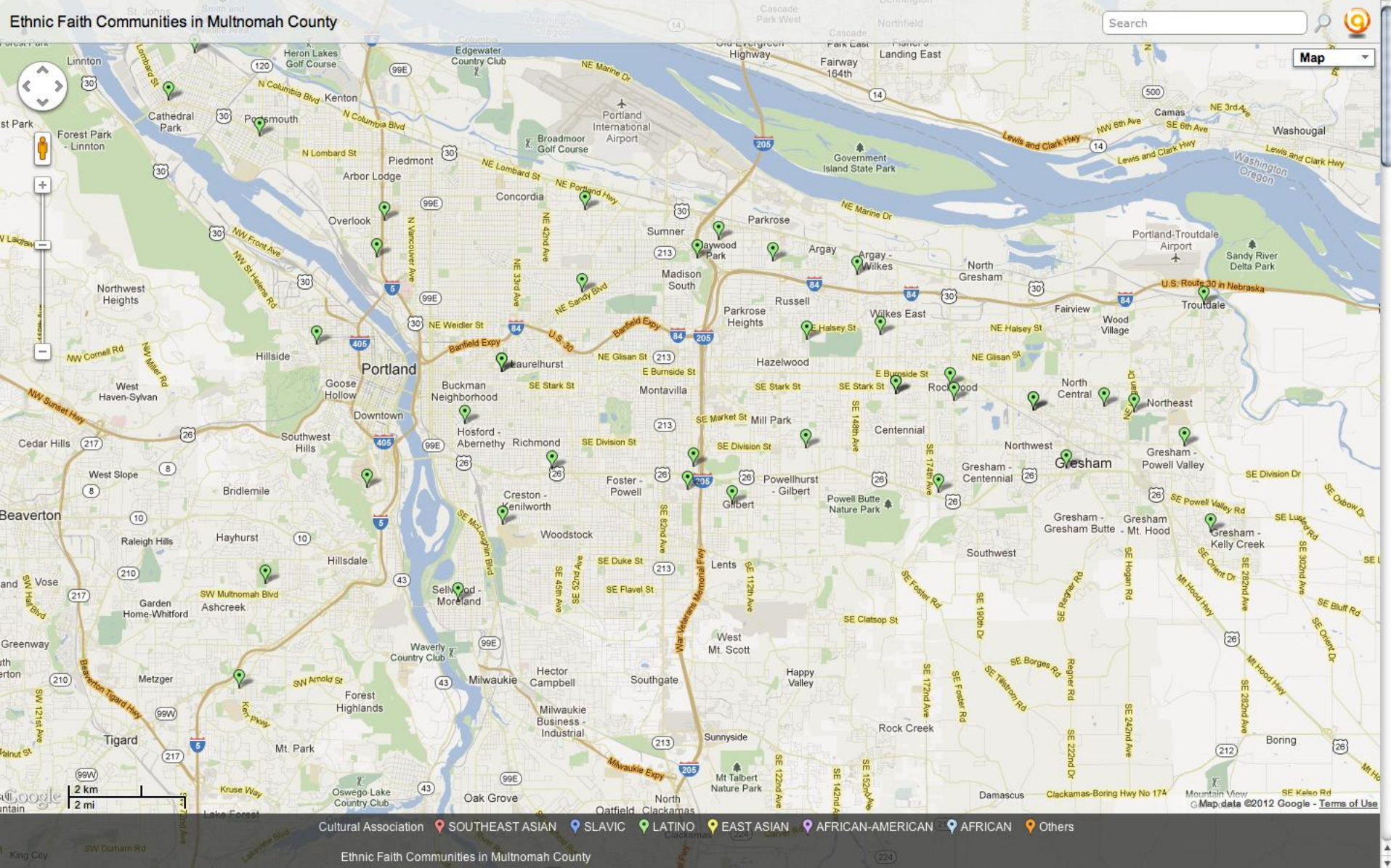
## African-American Faith Communities in Multnomah County



## Southeast Asian Faith Communities in Multnomah County



## Slavic and Post-Soviet Faith Communities in Multnomah County



## Hispanic Faith Communities in Multnomah County

# CURRENT PARTNERSHIPS

- Homeless Families
- Hunger Relief
- SUN Program
- Food Security
- Health Education and Prevention
- Domestic Violence

# CURRENT PARTNERSHIPS

- Commercial and Sexual Exploitation of Children (CSEC)
- Youth Violence Prevention
- Emergency Management
- Chaplaincy in Jails

# 2013

- Quarterly Newsletter
- Training and Development
- ADSD - Seniors
- DCHS Emergency Management
- Veterans
- East County Caring for Our Community