

# 35 Years of Public Art | Multnomah County



# JUSTICE CENTER



Walter Dusenbery, Portland Columns, 1983



Ed Carpenter, *Untitled* (Glass Window), 1983



# JUSTICE CENTER



Isaka Shamsud-Din, *Bilalian Odyssey*, 1983-1997



# MULTNOMAH BUILDING



Wayne Chabre, *Connections*, 2005

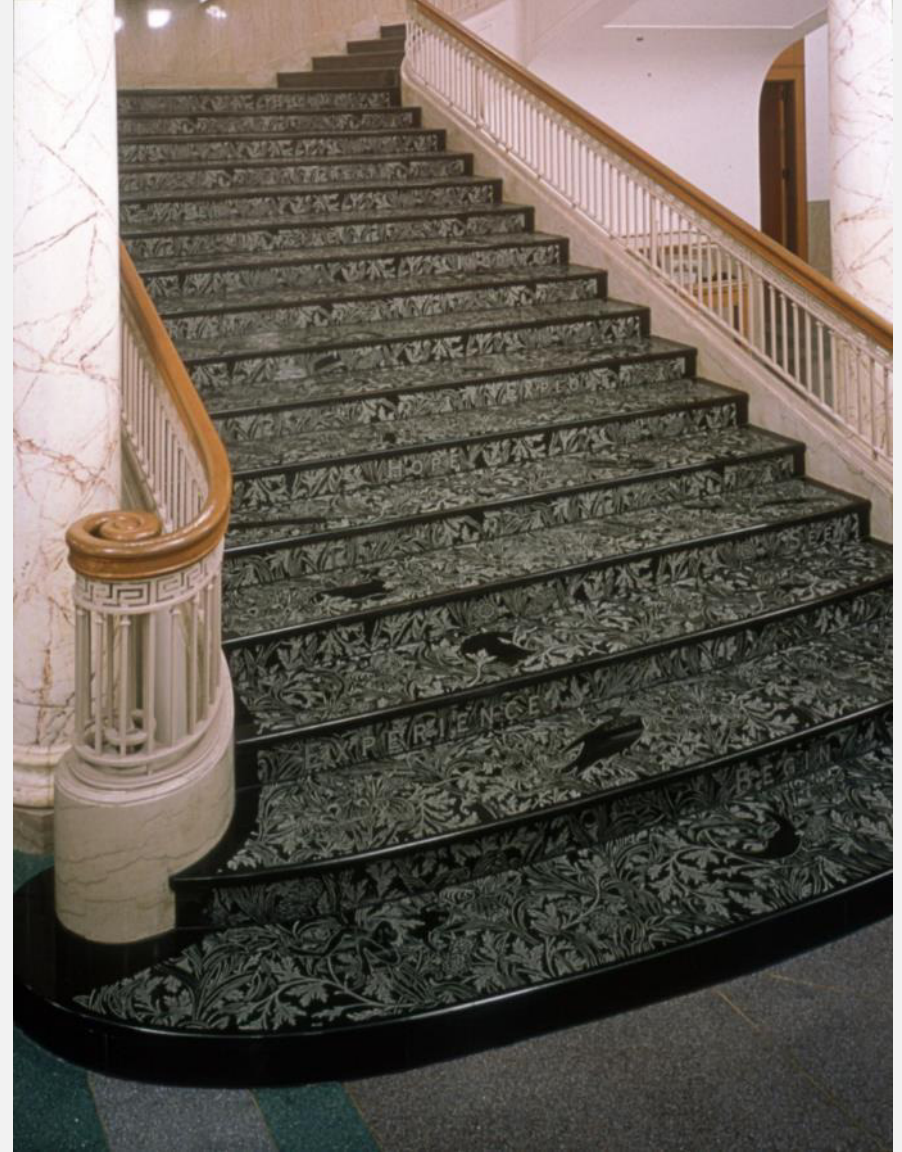


# LIBRARIES: Midland



Lucinda Parker, *Talking Leaves*, 1996

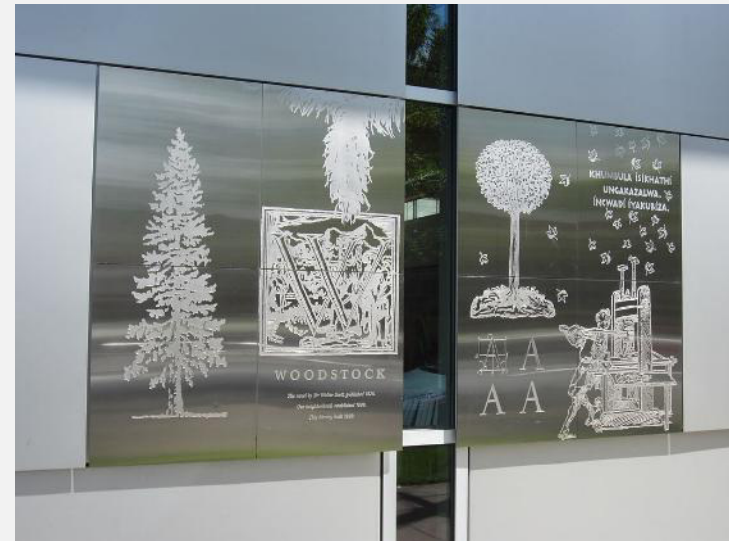
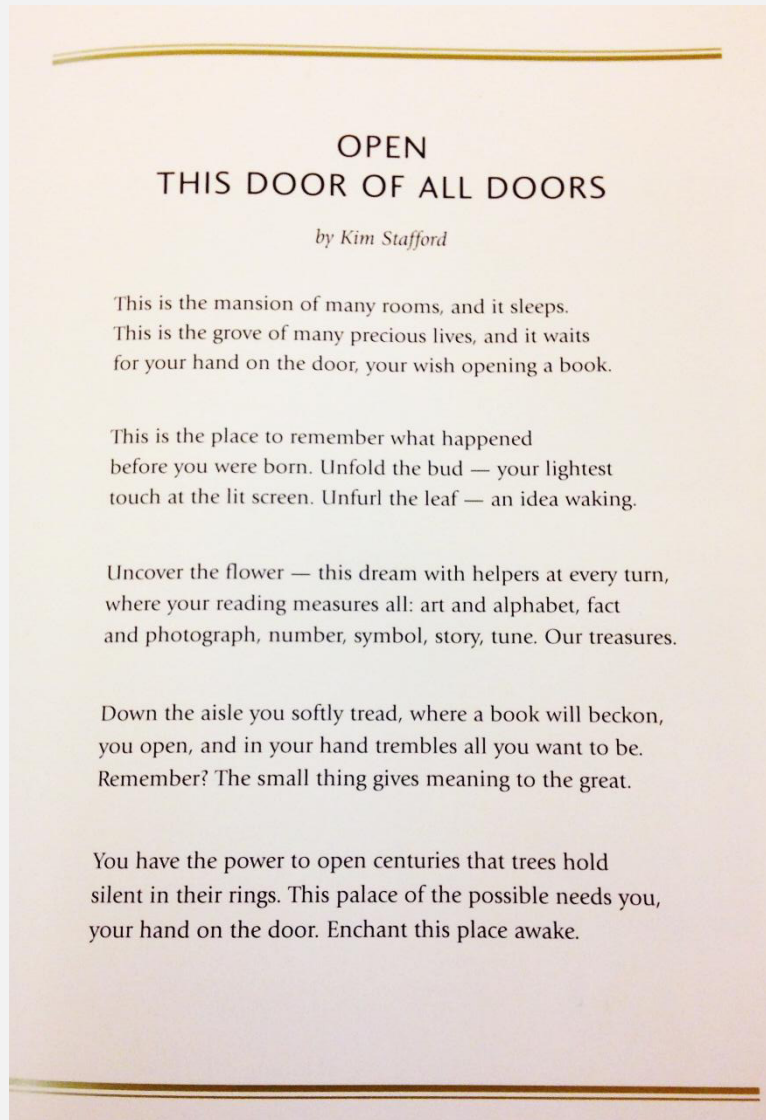
# LIBRARIES: Central



Larry Kirkland, *Garden Wreath* (left) *Garden Stair* (right), 1997



# LIBRARIES: Woodstock



Left: Kim Stafford, *Open This Door of All Doors*  
Right: Margot Voorhies Thompson, *Archive* (4 of 32 exterior panels), 2000

# LIBRARIES: Capitol Hill



Laura Bender, *Where in the World*, 2013



# HEALTH CENTERS: Northeast Portland



top: Adriene Cruz with Jamaan Profit and Jose Reyes  
left: John Early, *Ten Portraits*, 1998



# HEALTH CENTERS: East County County



Masayuki Nagase, *Cycle of Life*, 2001



Betsy Wolfston, *Community Wisdom*  
6 of 20 ceramic reliefs, 2001



# EAST COUNTY COURTHOUSE

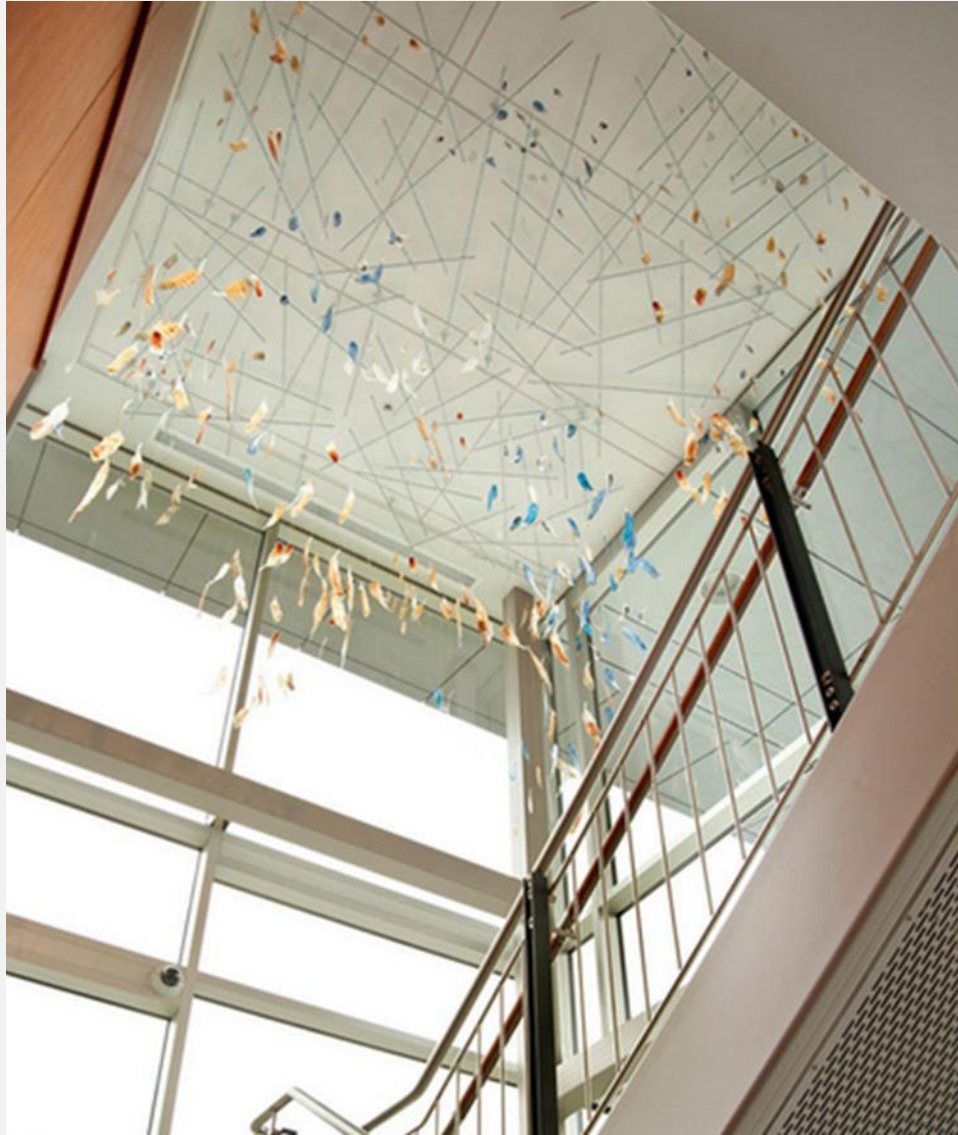


Anne Storrs, *Balancing Tree*, 2012



Anne Storrs, *Weighing*, 2012

# EAST COUNTY COURTHOUSE



Erin Shie Palmer, *Accumulated Deeds*, 2012



# INTERSECTIONS: Artist Residencies



Harrell Fletcher, *Blot Out the Sun* (video), 2001



# INTERSECTIONS: Artist Residencies



Linda Wysong, *On the Road*, 2002

# INTERSECTIONS: Community Health and Social Justice



Horatio Law, *You Are What You Eat* (mixed media), School Based Health Center, Roosevelt High School, 2002



# INTERSECTIONS: Bridge Section



Tim DuRoche and Ed Purver, *Hidden Life of Bridges*, 2011

# INVERNESS JAIL



Joanna Priestley and Joan Gratz, *Pro & Con* (video still), 1992



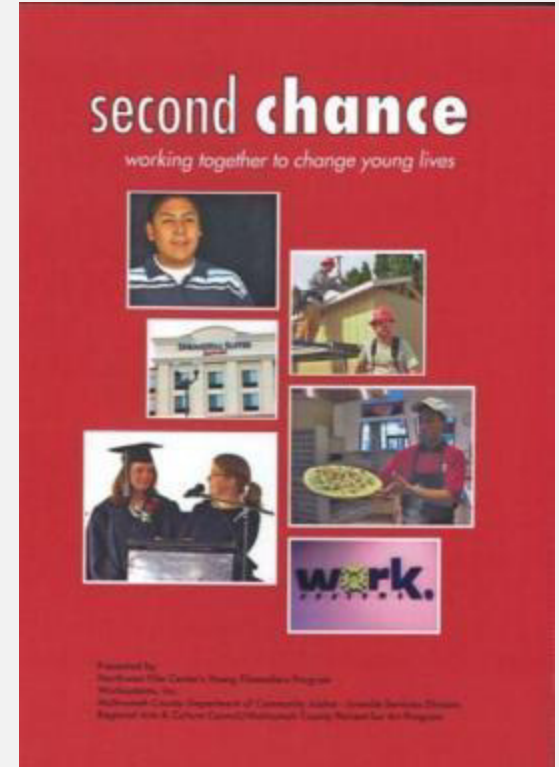
# YOUTH ARTS | GRIT 1997



*Measure 11: The Law & Its Consequences*  
Brian Lindstrom, Filmmaker with 9 youth on probation

# YOUTH ARTS | WorkSuccess Career Pathways Program

I can do anything I want to do....I feel like the world ain't gonna give up on me." -- Jaron



*Second Chance* Video (2007)

Brian Lindstrom, Filmmaker

Youth filmmakers: Miguel Perez, Jasmine Kandel, Brian Carter-Lewis, Jaron McNeely



# YOUTH ARTS 1996-2015



Photography Self Portrait project 1997  
Julie Keefe, Photographer



# YOUTH ARTS | Tears of Joy Theater 1997



*Mowgli in the Hood (1997)*



# YOUTH ARTS | JJC Detention



Arvie Smith, *Project Hope*, 2009-2011

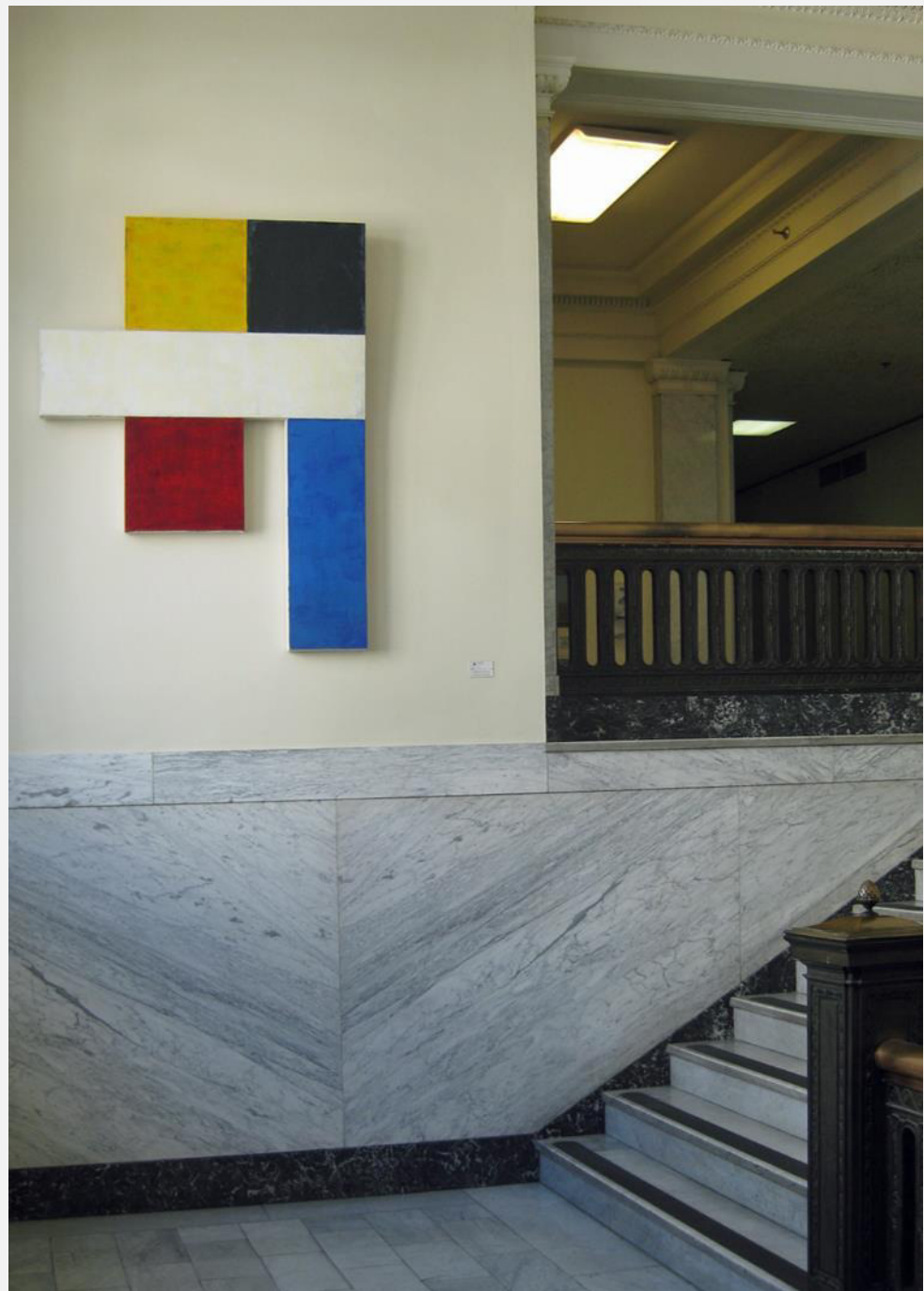


# YOUTH ARTS | JJC Detention

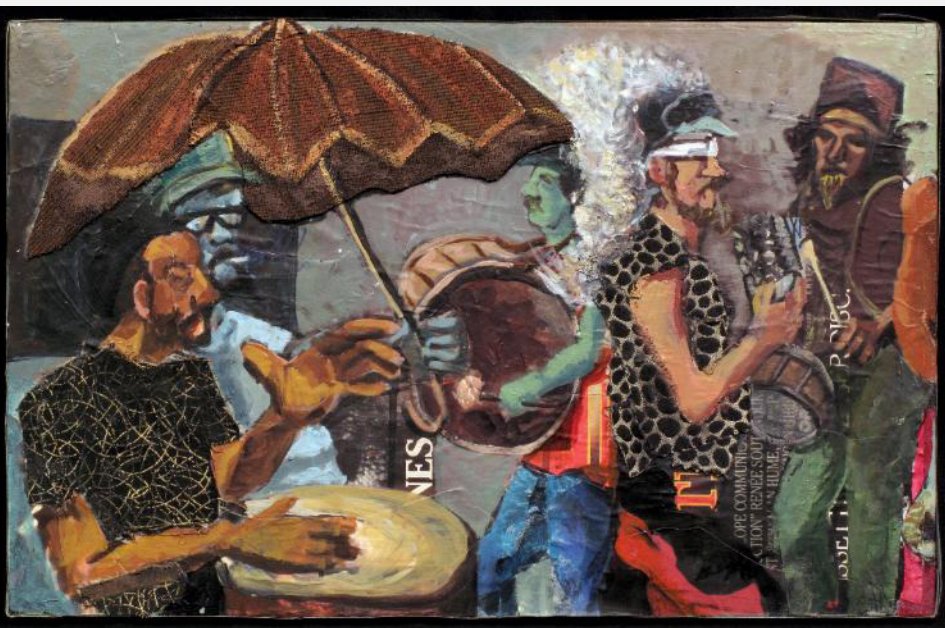




# PORTABLE WORKS



# PORTABLE WORKS



Hampton Rodriguez, *Alberta Street I* (left); *Alberta Street II* (right); 2007



# PORTABLE WORKS



Shaun Peterson, *Spawn* (top), 2013  
Shaun Peterson, *Frogs I* (bottom), 2010



Malynn Wilbur-Foster  
*Journey Through My Dreams*, 2011

# PORTABLE WORKS



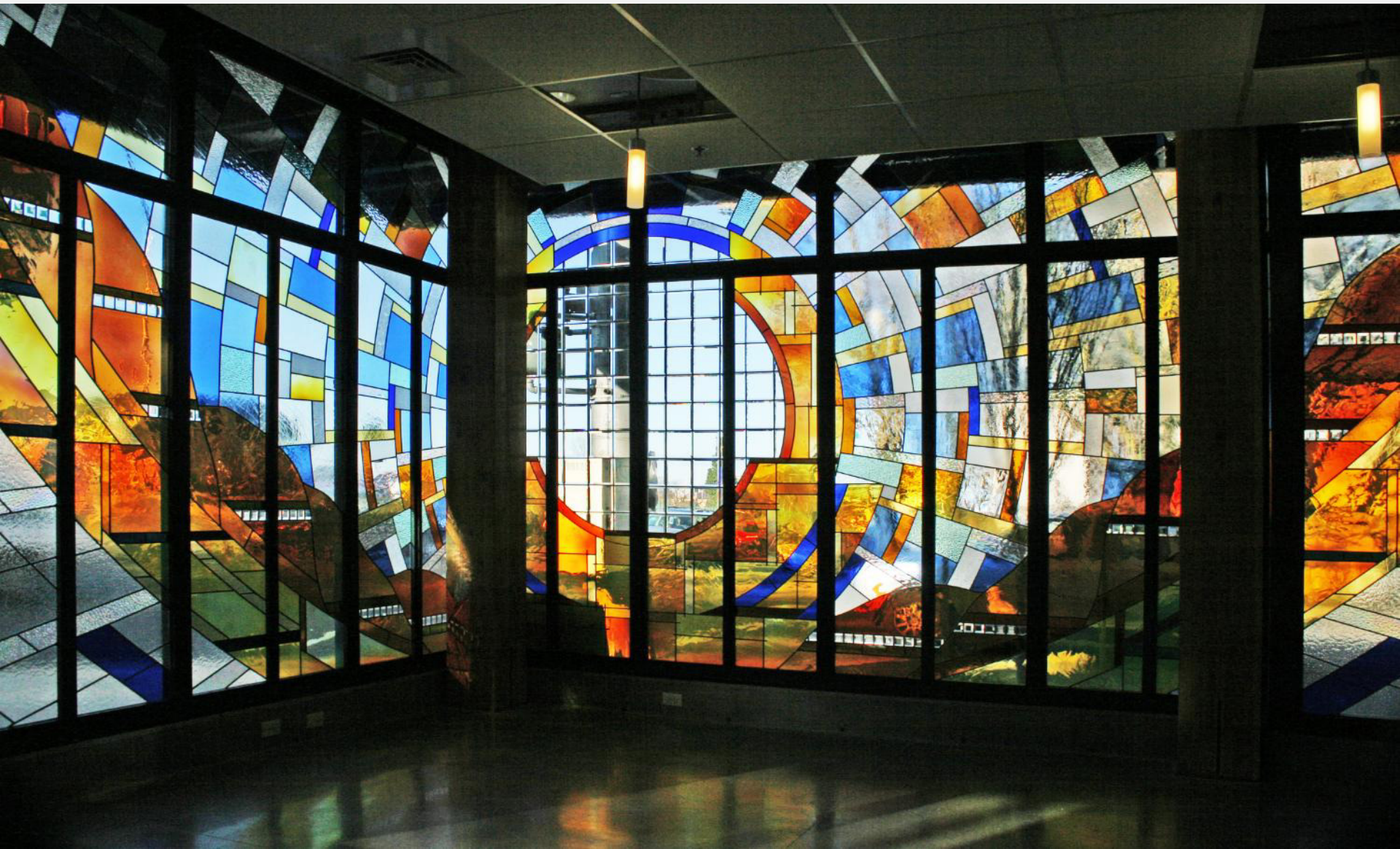
Thomas Le Ngo, *Blanketed Angles*, 2005



Sandra K. Banister, *PDX Liberian Woman*, 2010



# Partnership | Home Forward and Luke-Dorf, Inc.



Jack Archibald, *Icarus Triumphant*, James Hawthorne Apartments, 2010



# Partnership | Portland Streetcar



Lead Pencil Studio (Annie Han and Daniel Mihalyo), *Inversion Plus/Minus*, 2012



# DONATIONS | George Johanson



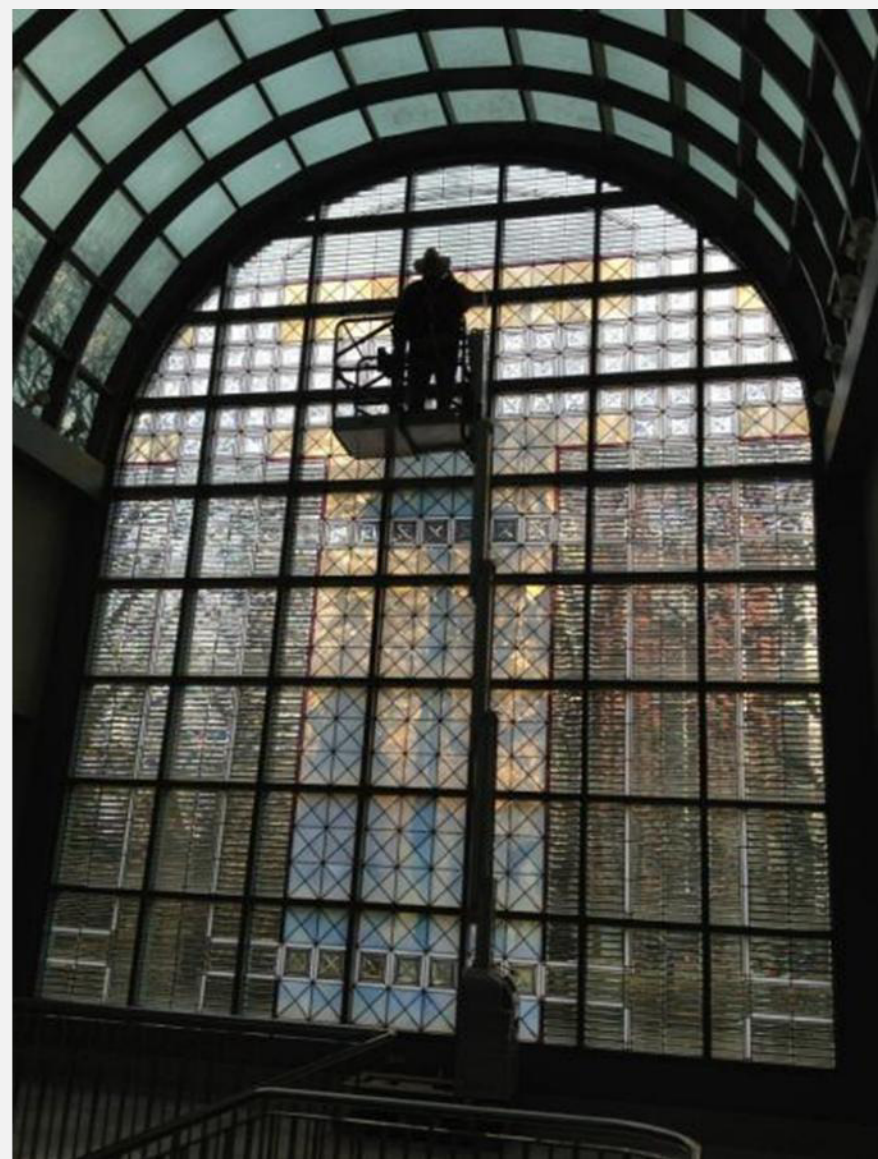




George Johanson, *Great Port City*, 1992  
Gift of Brooks and Dorothy Cofield to Multnomah Central Library (2007)



# MAINTENANCE









# HEALTH DEPARTMENT HEADQUARTERS



Francesco Simetti



Moudo Dieng and  
Devon vanHouten-Maldonado



Alexandra Hirsch



Chris Dean



# MULTNOMAH COUNTY COURTHOUSE





# SELLWOOD BRIDGE | Mikyoung Kim Design

**SE Tacoma Street looking west across bridge.**



# PUBLIC ART SEARCH : racc.org/public-art/serch

## PUBLIC ART

- Overview / Opportunities
- Public Art Search
- Collections
- Temporary Public Art
- Public Art Murals Program
- Policies & Guidelines
- Conservation & Maintenance
- Management Services
- Design Team Roster
- Installation Space
- Public Art Email List


### Additional Resources

- Public Art Program Overview
- Artist Fabricator and Resource List


## PUBLIC ART SEARCH

This searchable database provides information and images of more than 1900 publicly owned artworks in the City of Portland and Multnomah County. You can simply browse through the collection (click on an image to learn more about it, including title, year completed, location, artist statement, and funding source), or narrow your search using the advanced options to find specific collections ♦ such as the Visual Chronicle of Portland, the Portable Works Collection, or the Public Art Murals Program ♦ or to browse by discipline.


### Featured Works




[Nepenthes](#)  
Dan Corson




[Inversion +/-](#)  
Annie Han,  
Daniel Mihalyo,  
Lead Pencil Studio




[City Reflections](#)  
Patti Warashina




[Portlandia](#)  
Raymond Kaskey




[Ecology: Stones from the group Flows and Eddies](#)  
Fernanda D'Agostino,  
Valene Otani




[People's Blue Library of Portland](#)  
Brian Borrello,  
Vanessa Renwick



[The Musician's Union Building Mural](#)  
Isaka Shamsud-Din,  
Joe Cotter,  
Hector Hernandez,  
Baba Wagué Diakité



[Inversion +/-](#)  
Annie Han,  
Daniel Mihalyo,  
Lead Pencil Studio



[Gig](#)  
Samantha Wall

### Public Art Search

Enter search terms below and click "Search."

Sort results by:

- ☒ Title
- ☐ Artist's last name
- ☐ Date of work

[Search by address on PortlandMaps.com](#)

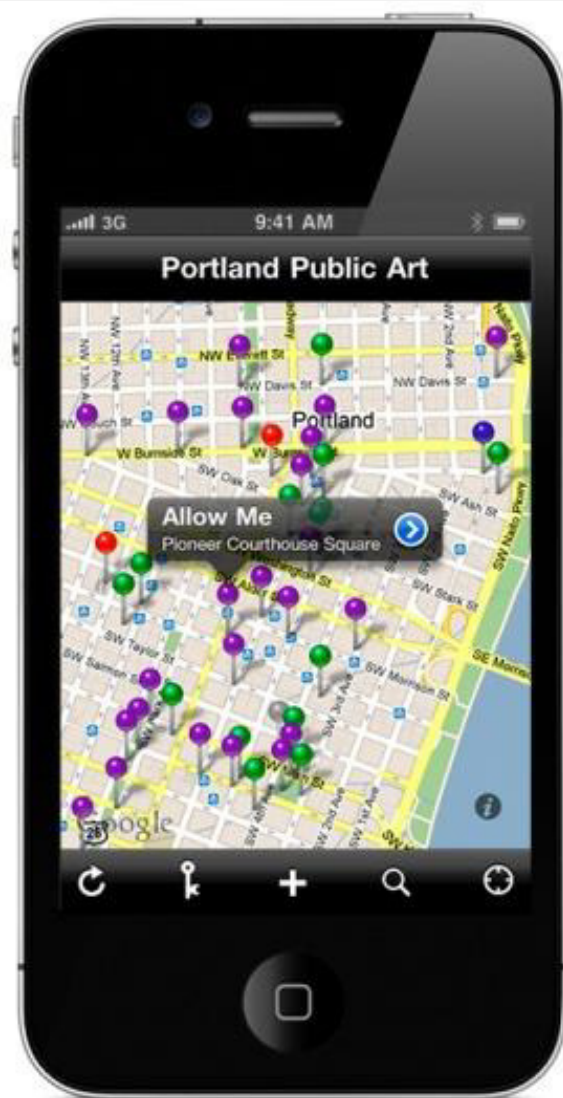
[Advanced Options >>](#)

**SEARCH**



# SOCIAL MEDIA

Free iPhone APP: publicartpdx



Instagram: RACCPDX



# PUBLIC ART WALKING TOUR

## University District

- 1 South Waterfront Park > *Mathieu Gregoire, River Shift*, 1999, basalt, concrete, steel
- 2 Portland Center Park, SW 2nd & Lincoln > *Lee Kelly & Bonnie Bronson, Leland #1*, 1975, earthen steel, porcelain enamel
- 3 Museum College of Engineering & Computer Science, SW 4th & College > *Ed Carpenter, Tecotosh*, 2006, laminated dichroic glass, lights, stainless steel truss, cables, hardware

- 4 DEVELOPMENT SERVICES BUILDING, 1900 SW 4th  
*Juan Alarcon, Diva*, 1999, acrylic (1st floor)  
*Robert Calvo, Rose City Labyrinth*, 1999, terrazzo, brass (lobby floor)  
*Zhao Sulikang, Untitled*, 1999, printed glass, fiber optics (lobby)  
*James Thompson, The Artist; Butchers; Woodworker; The Farmer; Weavers; Stonecutters; The Ploughman*, 1999, acrylic on wood (floors 1-7 elevator lobbies)  
*Robert Yoder, Sweet Air Bend*, 1999, painted wood, wax (1st floor)

- 5 Peetzygrove Park, SW 3rd b/w Market & Harrison > *Manuel Izquierdo, Dreamer*, 1979, mounted bronze
- 6 200 SW Market > *Mel Katz, Red, Yellow, Blue*, 1990, cast concrete, linoleum
- 7 SW 3rd & Market > *Doug Seft, Awning*, 1976, painted aluminum
- 8 14 locations along Streetcar Line > *Harrell Fletcher, More Everyday Sunshine*, 2004-05, interactive light installation  
 SW 5th & Mill, platform spot  
 SW 4th & Montgomery, drinking fountain  
 SW Park & Market, tree knot  
 SW 10th & Mill, bench

- 9 PORTLAND STATE UNIVERSITY  
 Urban Center Building and Plaza, SW 6th & Mill > *John Aiken, Untitled*, 2000, granite



- 10 School of Business Administration, SW 6th & Montgomery > *Dale Eldred, Levitated Light*, 1987, glass
- 11 School of Education, SW Broadway & Montgomery > *Thomas Morandi, Yankee Champion*, 1983, steel

- 12 Student Health Center, SW 6th & Hall > *Susan Harlan, 2005*
- 13 NATIVE AMERICAN STUDENT CENTER, SW Broadway & Jackson  
*Ken MacKintosh & Lilian Pitt, Salmon Cycle Marker*, 2005, bronze, stainless steel  
*Jim Jackson, Emerging Figures*, 2004, bronze  
*Doug Hyde, Chief Joseph*, 1998, bronze

- 14 Neuberger Hall, SW Broadway & Hall west façade > *Thomas Hardy, Oregon Country*, 1962, bronze
- 15 Smith Memorial Hall, SW Broadway & Harrison, 2nd floor stairwell > *haka Shamsud-Din, Vanport*, 1964-65, mural
- 16 Branford Miller Library, South Park Blocks b/w Harrison & Hall > *Geoffrey Pagor, Decker*, 1992, raku fired ceramics
- 17 Epler Hall Plaza, SW 12th & Montgomery > *Margot Thompson, Memorial*, 2005, etched stainless steel
- 18 West Hall, Entrance Plaza, SW 11th & Mill > *Jerry Mayer, Cobbletale*, 1992, cobblestone
- 19 Science 1 Building, SW 10th & Mill > *Frederick Heide, All in a Row*, 1969, glass

## Downtown

- 20 PORTLAND BUILDING, 1120 SW 5th  
*Raymond Kaskay, Portlandia*, 1985, hammered copper lobby, Installation Space featuring monthly exhibitions  
 2nd Floor, Public Art Gallery  
*George Johanson, Rain and the River*, 1987, ceramic tile (4th floor)

- 21 CITY HALL, 1221 SW 4th  
*Jim Blashfield & Carol Sharman, Evolution of a City*, 1998, interactive display with text and photographs  
*Dana Lynn Louis, Suspended Migration*, 2004, beads, mica, glass, fabric  
*Norie Sato, Tad Savinac, Bill Will, Brief Cases*, 1998, bronze, stainless steel, plaster  
*Jack McLarty, A Portland Story*, 1998, hand-colored woodblocks  
*Lucinda Parker, Rose City, City Rose*, 1998, acrylic on canvas  
*Michael Brophy, Lower Willamette Arch: River and Forest*, 1998, acrylic on canvas  
*Don Merk, Our Time*, 1998, bronze, steel, clock, paint, electric light

- 22 Don Merk, Port/Land, 1998, reinforced plaster
- 23 EDITH GREEN-WENDEL WYATT FEDERAL BUILDING, 1220 SW 3rd  
*Dmitri Hadzi, River Legend*, 1976, basalt  
*Jack Youngerman, Rumi's Dance*, 1976, tapestry

- 24 JUSTICE CENTER, SW 3rd b/w Main & Madison  
*Bonnie Bronson, Untitled*, 1983, enameled steel (interior)  
*Ed Carpenter, Glass Window Wall*, 1983, stained, beveled glass (exterior)  
*Walter Dusenberry, Portland Columns*, 1983, travertine (exterior)  
*Bruce Forster, The Portland Police: A Portrait*, 1985, gelatin silver print (interior)  
*Liz Mapelli, 1983, arcade ceiling, glass tile (exterior)*  
*Tim O'Neill, 1983, glass lamps (interior)*  
*Unknown Kwakiutl Indian, Eagle*, 19th century, cedar (interior)

- 25 Chapman Square, SW 4th & Main > *David Manuel, Promised Land*, 1993, bronze
- 26 SW Main b/w 3rd & 4th > *Roland Perry, Elk*, 1900, bronze
- 27 Lowndale Square, SW 4th & Taylor > *Doug Tilden, Spanish American War Soldier's Monument*, 1906, bronze, granite  
*John Beaver, Second Oregon Company Volunteers*, 1914, bronze, limestone drinking fountain

- 28 MARK O. HATFIELD FEDERAL COURTHOUSE, 1000 SW 3rd  
*Judith Posson Fawkes, Oregon: Justice* (15th floor public lobby); *Judicial Heritage; Oregon Environment* (Special Procedures Courtroom) 1997, linen tapestries  
*Tom Osterman, Law of Nature*, 1997, bronze (rooftop terrace)  
*Sandra Stone, Words from a Wall*, 1997, etched text in granite (exterior)  
*Eric Orr, Ocean of Thought; Passage of Time: Portland Water Veil*, 1997, water, granite (exterior and lobby)

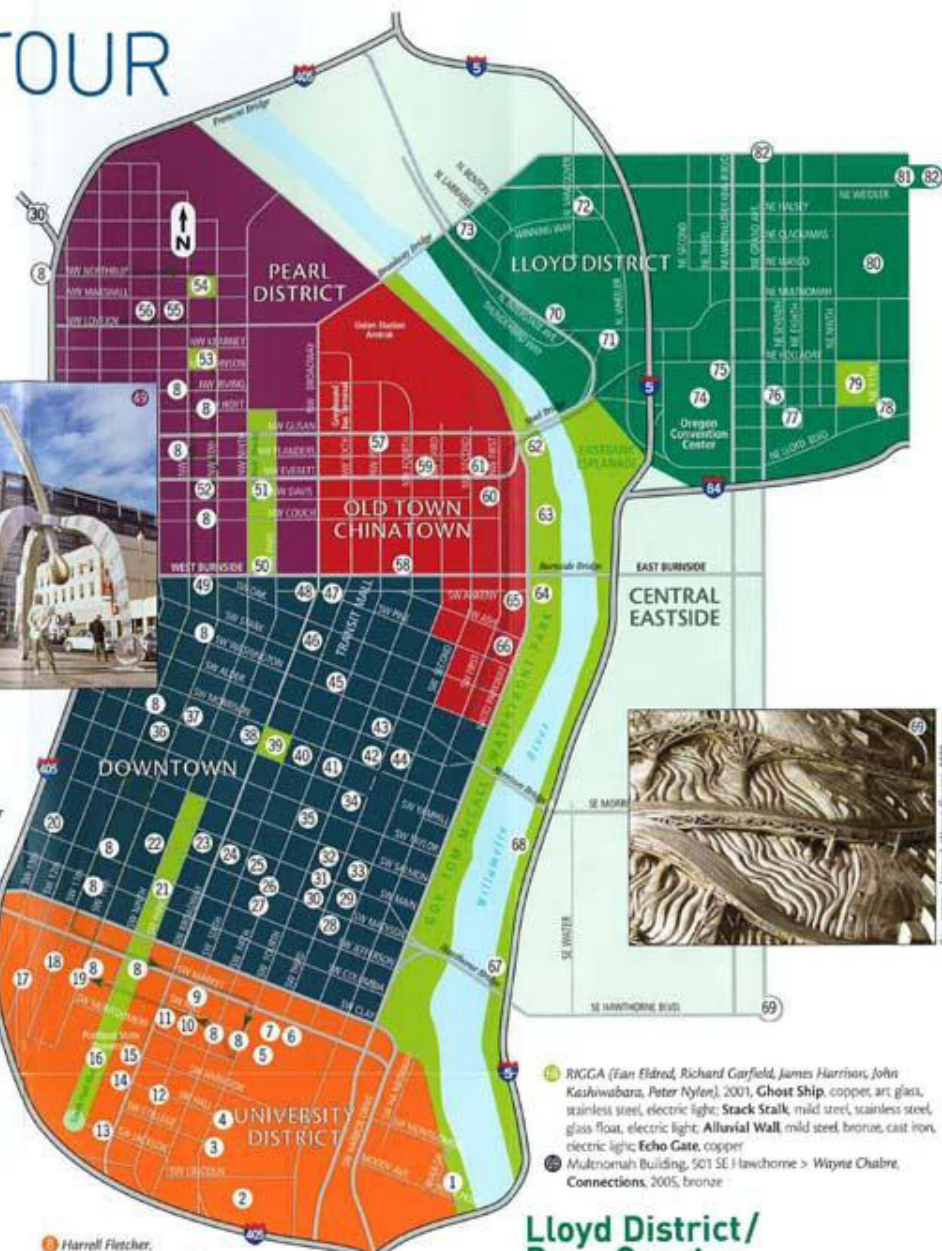
- 29 Parking Garage, SW 4th & Yamhill > *Lee Hunt, The Human Comedy*, 1990, terra cotta; *Bill Will & Katherine Dunn, Streetwise*, 1990, 81 granite pavers

- 30 SW 5th b/w Taylor & Salmon > *Count Alexander Von Sweboda, The Quest*, 1970, marble

- 31 CENTRAL LIBRARY, 801 SW 10th  
*Larry Kirkland, 1997, Garden Wreath*, aluminum, gold leaf; *Garden Stair*, etched granite stairwell; *Solar Wreath*, aluminum, gold leaf  
*Dana Lynn Louis & Barbara Esmereth, Preserving a Memory*, 1997, bronze (Children's Library)  
*Kay Sasarenko, Souvenirs*, 1997, mixed media (Children's Library)



Photo: Peter Berman, 2002



## Lloyd District /

- 32 RIGGA (Tan Eldred, Richard Garfield, James Harrison, John Kashwabara, Peter Nylen), 2001, Ghost Ship, copper, art glass, stainless steel, electric light; *Stack Stalk*, mild steel, stainless steel, glass float, electric light; *Alluvial Wall*, mild steel, bronze, cast iron, electric light; *Echo Gate*, copper
- 33 Multnomah Building, 501 SE Hawthorne > *Wayne Chabre, Connections*, 2005, bronze



# MEAD BUILDING



Terresa White and Sean Gallagher  
*Here to There and There to Here*, 2015

# YOUTH ARTS | JJC Detention | Hip Hop Project



Top row: CoolNutz, Diezel P, Tim Slew, Arvie Smith  
Bottom row: Turiya Autry, DJ Wicked, Isaiah Spriggs





# YOUTH ARTS | JJC Detention | Hip Hop Project





# CELEBRATING PUBLIC ART



Join the  
Regional Arts & Culture Council

**Thursday, November 19, 2015**  
**5:00-7:00 PM**

Portland City Hall  
1221 SW 4th

live music and refreshments

We look forward to celebrating with you!