

Attachment A

Urban Growth Boundary

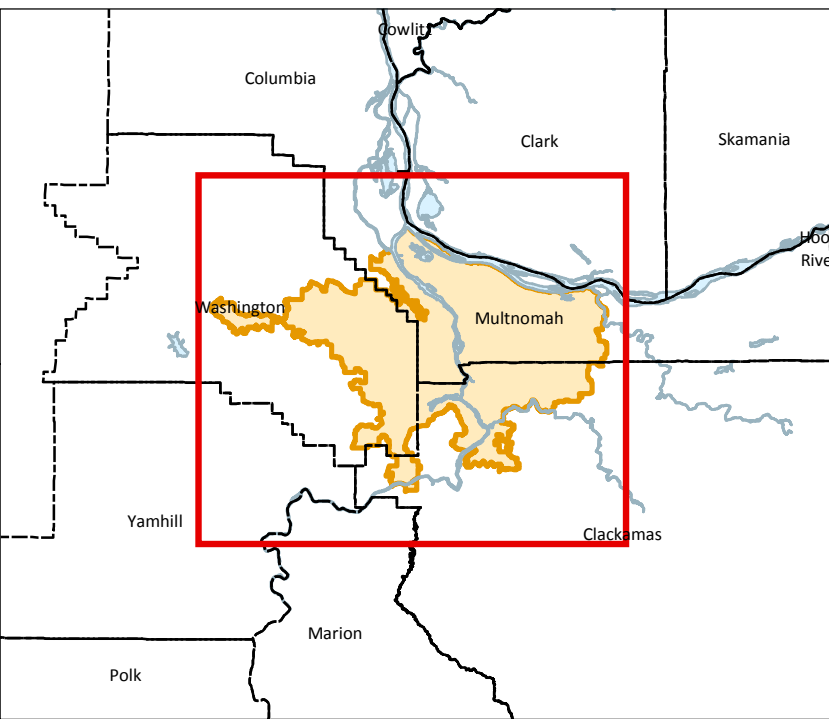
September 2015

- Urban growth boundary
- Arterial streets
- Rivers and water bodies

0 0.5 1 2 3 Miles



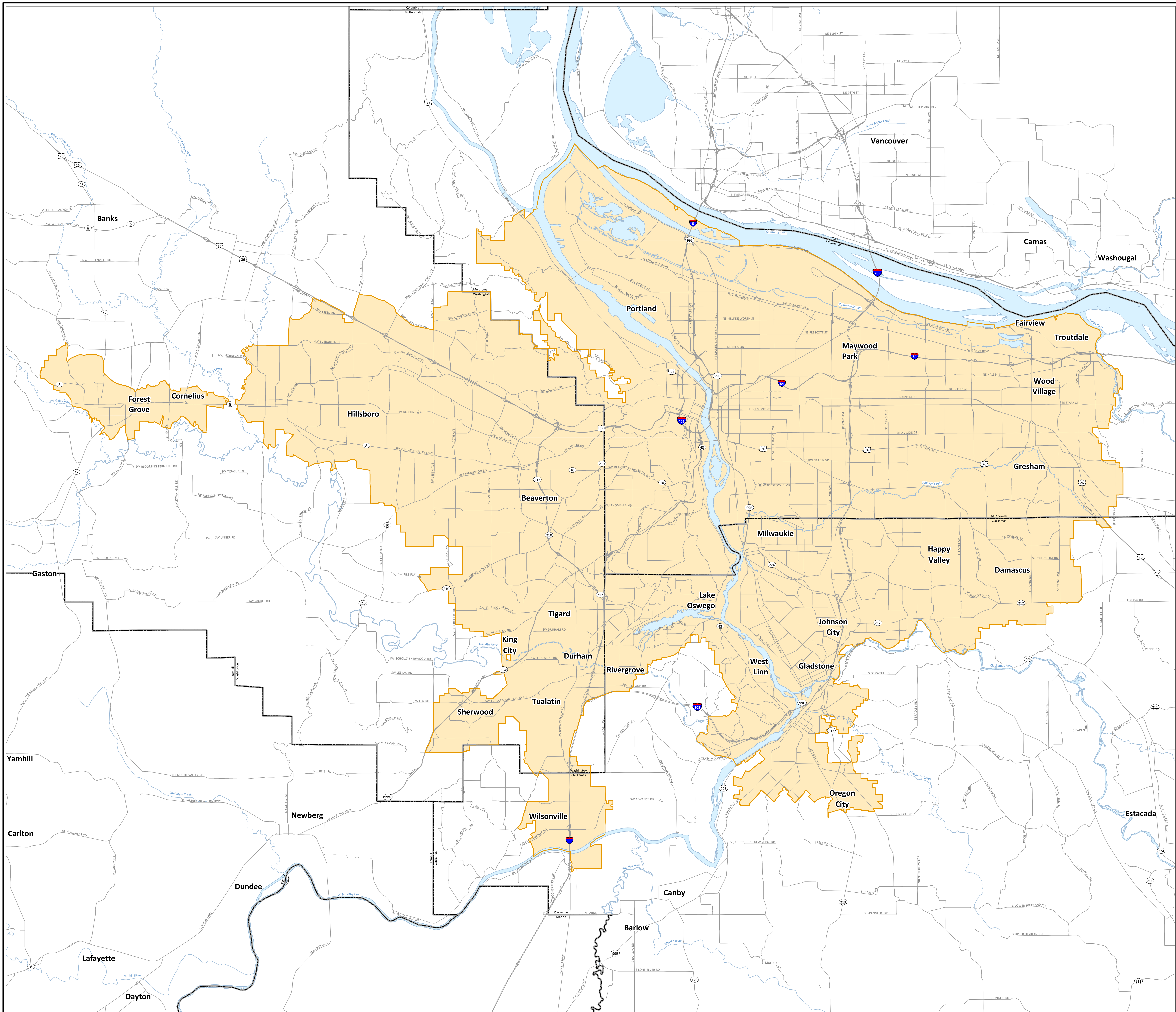
The information on this map was derived from digital databases on Metro's GIS. Care was taken in the creation of this map. Metro cannot accept any responsibility for errors, omissions, or positional accuracy. There are no warranties, expressed or implied, including the warranty of merchantability or fitness for a particular purpose, accompanying this product. However, notification of any errors will be appreciated.



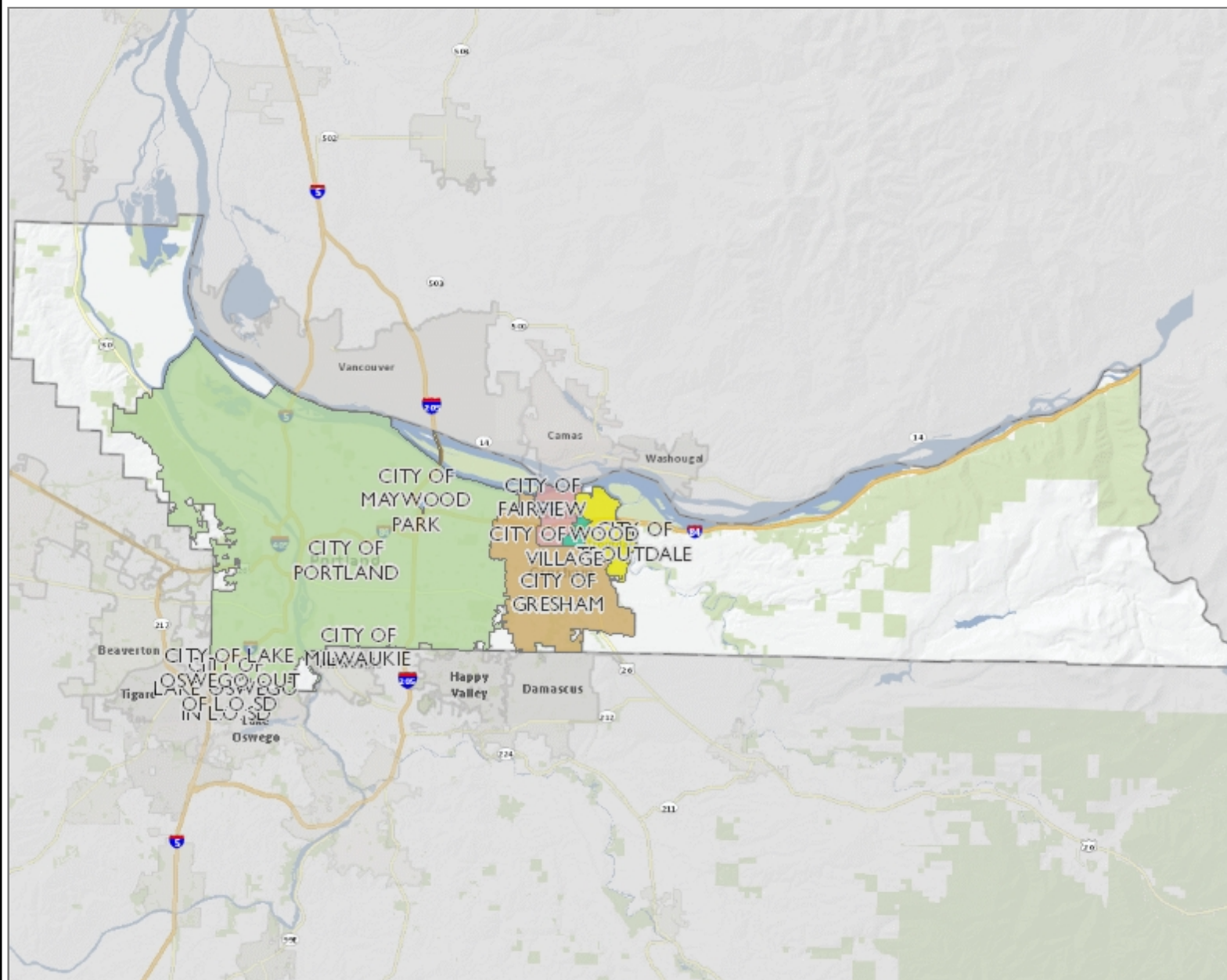
Location Map



METRO RESEARCH CENTER
600 NORTHEAST GRAND AVENUE | PORTLAND, OREGON 97232-2736
drc@oregonmetro.gov | gis.oregonmetro.gov
TEL (503) 797-1742 | FAX (503) 797-1509



Attachment B



Legend

Cities

- CITY OF FAIRVIEW
- CITY OF GRESHAM
- CITY OF LAKE OSWEGO IN L.O
- CITY OF LAKE OSWEGO OUT C
- CITY OF MAYWOOD PARK
- CITY OF MILWAUKIE
- CITY OF PORTLAND
- CITY OF TROUTDALE
- CITY OF WOOD VILLAGE

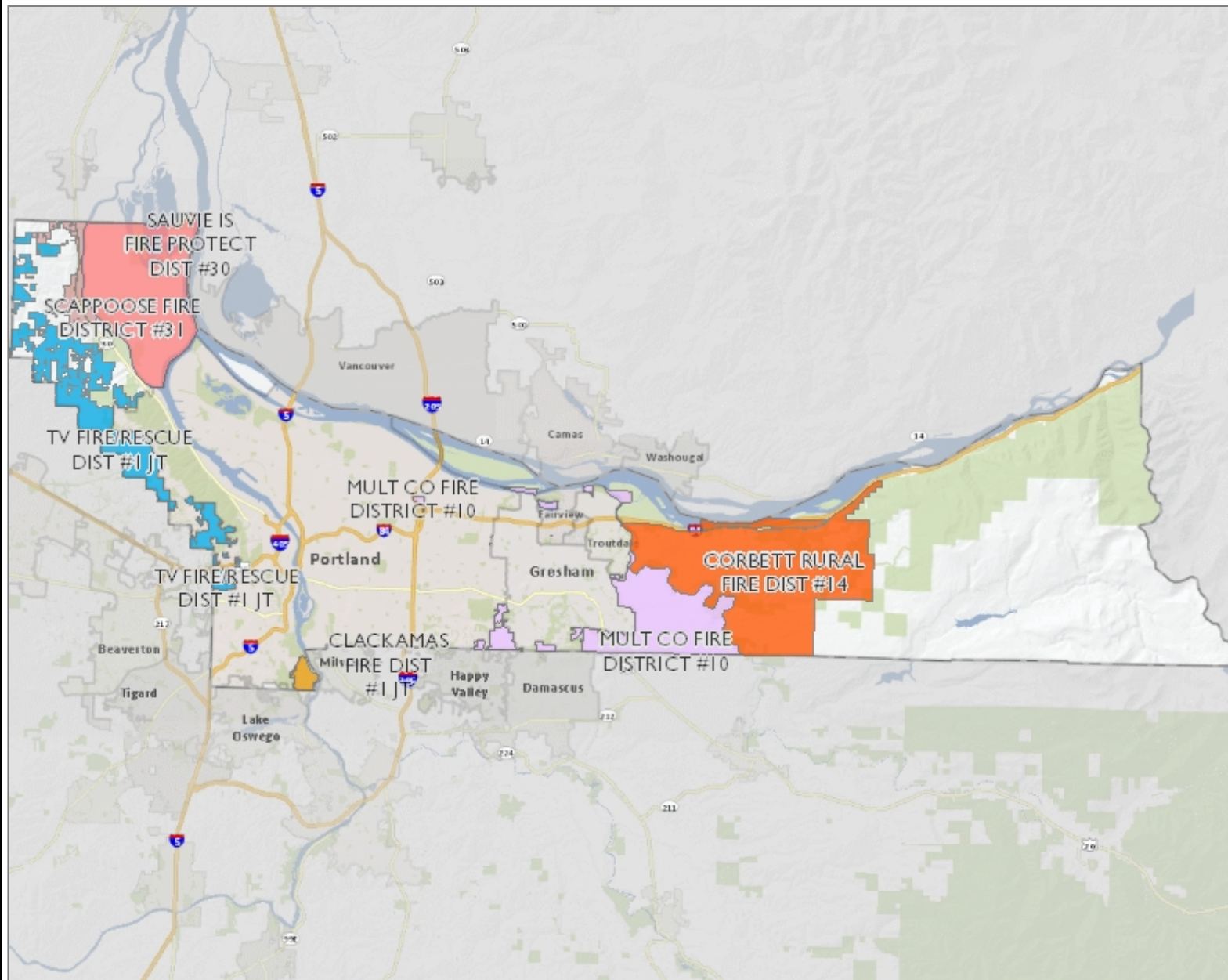
Notes



This map is provided for informational purposes only. Information used to develop this map has been obtained from many sources, and is not guaranteed to be accurate. Multnomah County assumes no responsibility for the accuracy of information appearing on this map.

Scale: 1: 410,033

Printed: 2/23/2016



Legend

Fire Districts

- CLACKAMAS FIRE DIST #1 JT
- CORBETT RURAL FIRE DIST #14
- MULT CO FIRE DISTRICT #10
- RIVERDALE FIRE DISTRICT #11
- SAUVIE IS FIRE PROTECT DIST #30
- SCAPPOOSE FIRE DISTRICT #31
- TV FIRE/RESCUE DIST #1 JT

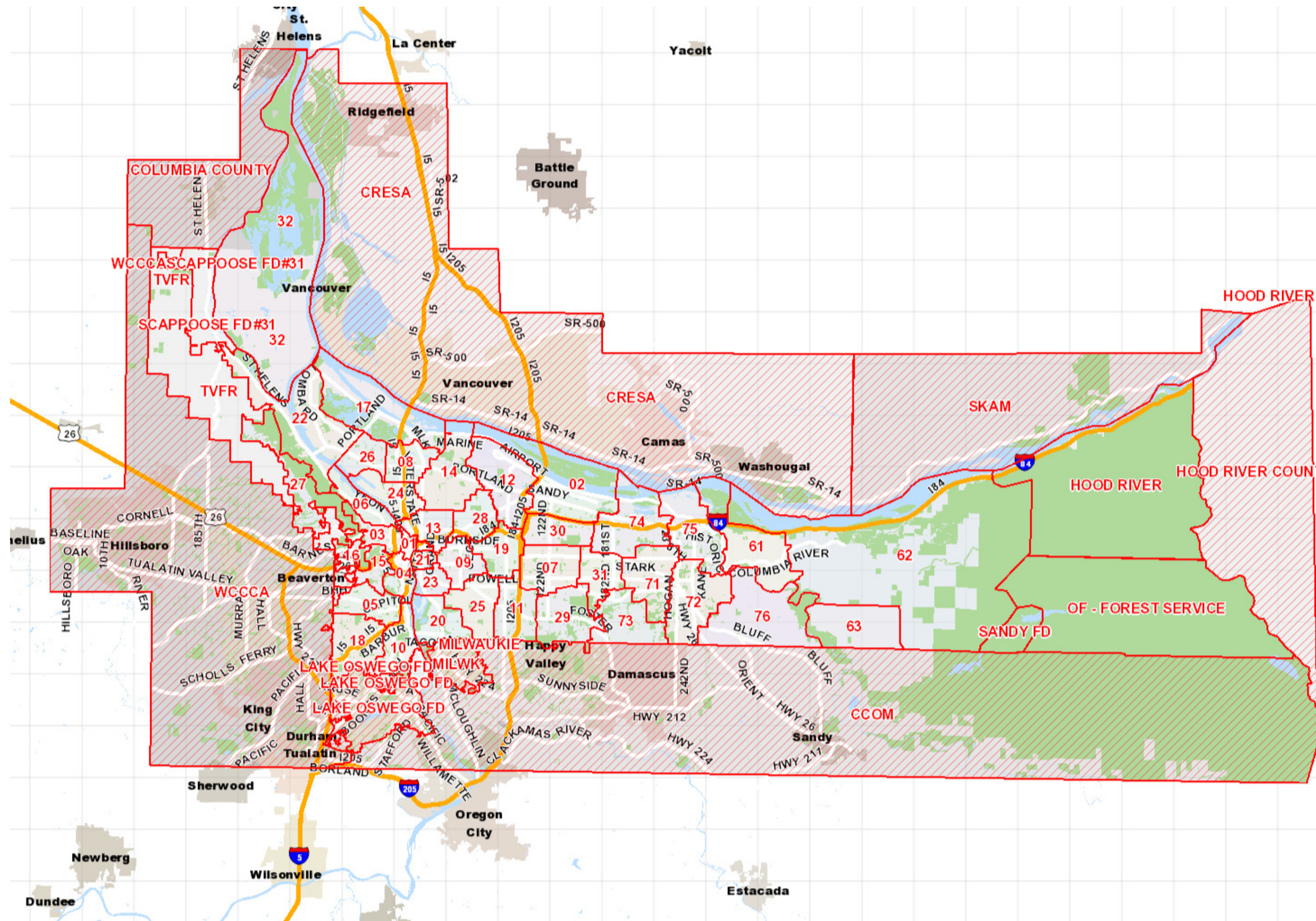
Notes



This map is provided for informational purposes only. Information used to develop this map has been obtained from many sources, and is not guaranteed to be accurate. Multnomah County assumes no responsibility for the accuracy of information appearing on this map.

Scale: 1: 410,033

Printed: 2/23/2016



Attachment C



EMS Medical Director

Class Code:
9530

Bargaining Unit: Non Union

MULTNOMAH COUNTY

SALARY RANGE

\$61.07 - \$97.72 Hourly
\$5,313.24 - \$8,501.23 Semi-Monthly
\$10,626.48 - \$17,002.46 Monthly
\$127,517.76 - \$204,029.52 Annually

DEFINITION:

To provide medical supervision for all emergency medical technicians providing pre-hospital patient care within the County, and to provide medical direction to all components of the emergency medical services system.

EXAMPLES OF DUTIES:

ESSENTIAL FUNCTIONS (Essential functions, as defined under the Americans with Disabilities Act, may include the following duties and responsibilities, knowledge, skills and other characteristics. Depending upon assignment, the incumbent may perform a combination of some or all of the following duties, which are a representative sample of the level of work appropriate to this classification.)

Develop uniform standards of emergency care within the County; solicit input regarding standards from physicians, nurses, emergency medical technicians, ambulance providers, first responder providers, hospitals, government agencies, and other interested organizations and individuals.

Accompany emergency medical technicians during the performance of medical duties for the purpose of supervision, education, and system evaluation.

Promulgate and revise, as necessary, medical care standards for: priority dispatch/pre-arrival instructions; ALS and BLS patient care protocols; hospital destination criteria; accreditation requirements for pre-hospital care personnel beyond State standards; staffing, equipment, supplies, and operational criteria for first response vehicles, ground ambulances, air ambulances, specialized critical care and mobile intensive care ambulances, and non-emergency patient transport vehicles for incorporation into licensing requirements; response times for first responders and transporting emergency ambulances; the transferring of patients between hospitals; and the provision of medical services in areas of public assembly.

Set standards for the provision of on-line medical control; develop and supervise a quality management program to ensure continuous improvement of all levels of care within the emergency medical services delivery systems; set standards and objectives, and participate in the continuing education and training of pre-hospital care personnel.

Approve emergency medical technicians for practice in the County. Establish policies and due process for the limiting of practice of emergency medical technicians, including probation, suspension, or revocation of physician orders.

Perform related duties as assigned.

SUPERVISION RECEIVED AND EXERCISED:

Receives administrative direction from the Director, Health Department.

Exercises technical supervision over emergency medical technicians.

KNOWLEDGE/SKILLS/ABILITIES REQUIRED:

Principles, practices, and procedures of emergency medicine.

Principles, practices, and procedures of pre-hospital patient care.

Principles, practices, and procedures of public health.

Federal, state, and local laws and regulations governing the practice of emergency medicine and pre-hospital emergency medical services.

Principles of supervision, training, and performance evaluation.

Effectively administer a variety of emergency medical care activities.

Interpret and apply applicable federal, state, and local laws, rules, regulations, and policies governing emergency medical services.

Establish and maintain cooperative working relationships with those contacted in the course of work.

Communicate clearly and concisely, both orally and in writing.

Gain cooperation through discussion and persuasion.

Supervise, train, and evaluate assigned staff.

MINIMUM QUALIFICATIONS REQUIRED FOR ENTRY:

Any combination of experience and training that would likely provide the required knowledge and abilities is qualifying. A typical way to obtain the knowledge and abilities would be:

Education/Training: Graduation from an accredited medical school and completion of an emergency medicine residency, AND

Experience: Three years of increasingly responsible emergency medical services experience, including system medical direction and emergency medical technician supervision.

License or Certificate: Possession of, or ability to obtain, an appropriate and valid license to practice medicine in the State of Oregon. Board certification in emergency medicine.

Depending upon assignment, candidates may be required to pass a criminal background check.

CLASSIFICATION TYPE/FLSA/HISTORY:

Type: Unclassified Executive

FLSA: Exempt

History: March 13, 2014 - Added criminal background check verbiage.

PSG:
236