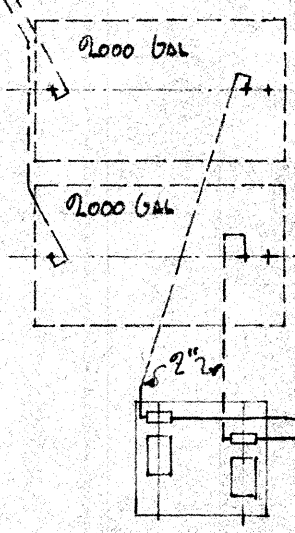


NE 1/2 R. Railroad
& S.P. DUNE

1 1/2" VENT - PLACE POST FOR VENTS



2-2 H.P. ROTARY PUMPS - SET ON
CONC. SLAB - PUMP MOTOR TO BE
220 V. - 3P. - 60 CY. - WEATHER
PROOF - COVERED WITH REMOVABLE
COVERS

2" TO DOCK

D O C K

START STOP STATIONS TO BE
LOCATED AT METERS TO
CONTROL PUMPS.

1 1/2" x 50 BRODIE METERS
WITH AIR ELIMINATORS
DOWNHEAD. EQUIP METERS WITH
VERTICAL OPEN FACE DIALS

PROVIDE 1" HOSE 50' LONG
FOR EACH RISER. HOSES
TO BE EQUIPPED WITH
WET FUEL OIL NOZZLES

EQUIPMENT

- 2-2000 GAL. TANKS (U.G.)
- 2-2 H.P. ROVER ROTARY PUMPS WITH ELECTRIC
MOTORS
- 2-1" x 50 BRODIE METERS
- 2-1" x 50' WET HOSES
- MISC. PIPE & FITTINGS
- ELECTRICAL EQUIPMENT.

GENERAL NOTES

- INSTALLATION TO BE MADE IN ACCORDANCE
WITH CITY OF PORTLAND CODE GOVERNING GASOLINE
INSTALLATIONS.
- TANKS TO BE BACKFILLED WITH SAND.

MARK	DATE	DESCRIPTION	APPROVED
LIST OF CHANGES			

SHELL OIL COMPANY INCORPORATED PORTLAND	
LAYOUT MARINE STATION AT STEFFORD VENNINGS - MACGOWAN BLVD. PORTLAND	
SCALE 1/8" = 1'-0"	APPROVED
DATE 7-6-46	Y-16114
DRAWN BY B	TR'D BY
CHECKED BY	