

Emergency Management Briefing for Board of Commissioners 1-25-2011

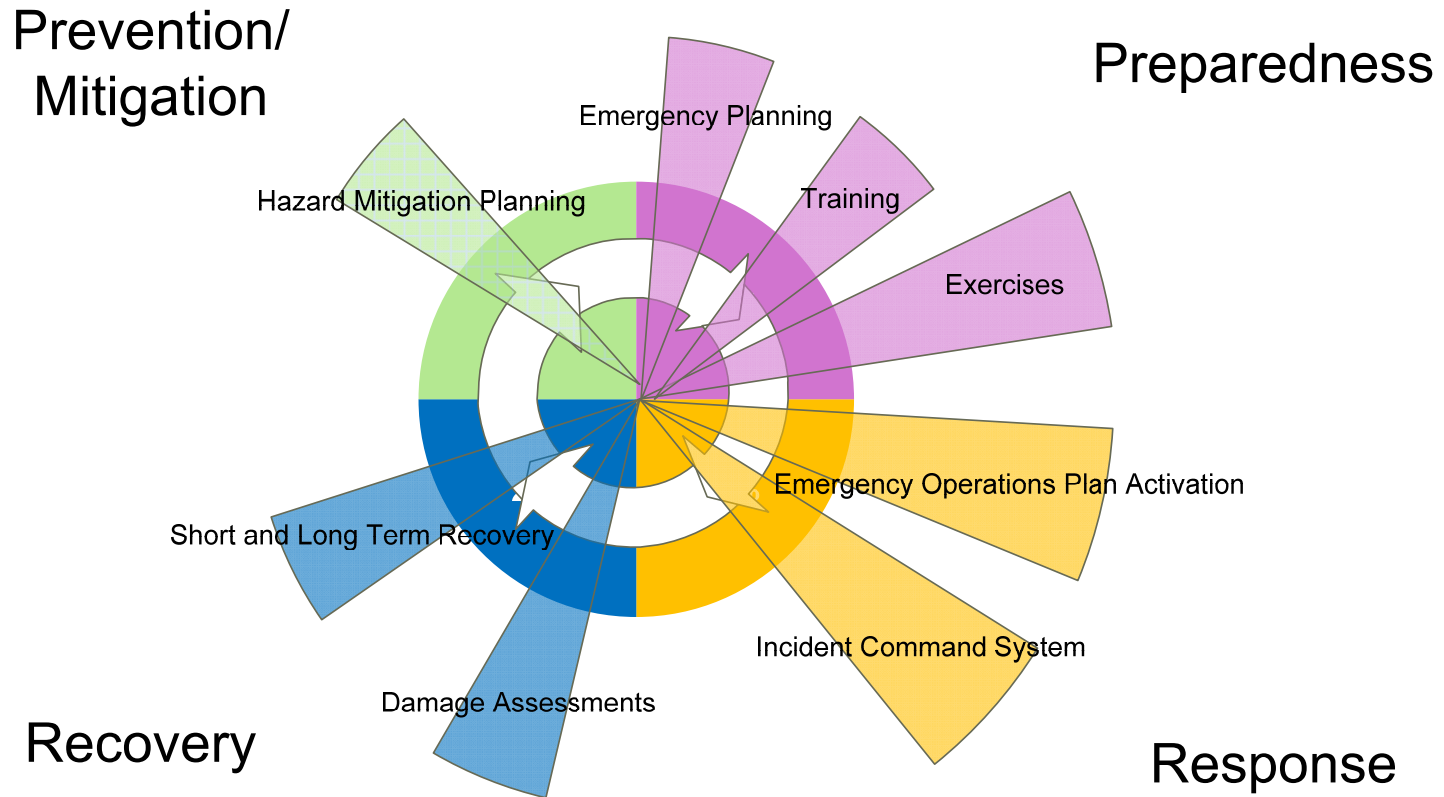
Agenda

- Introduction
- Emergency Management “Big Picture”
- County Emergency Management
- Legal Aspects of Emergency Management
- Roll of the Board of Commissioners

Emergency Management Big Picture



The 4 Phases of Emergency Management



Emergency Management Big Picture

What is the national model for disaster assistance?

Neighbor helping neighbor.



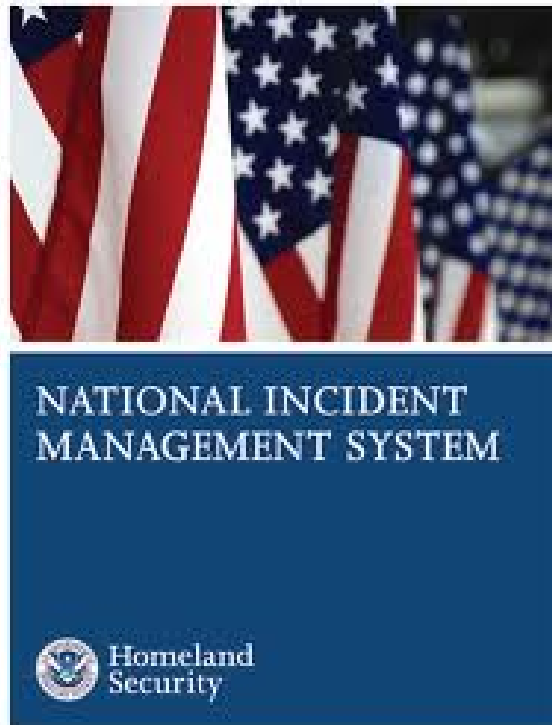
“...almost 66,000 personnel were deployed {from out of state} during Katrina and Rita disasters...”

-The Public Manager, December 22, 2006

Emergency Management Big Picture

How is this implemented?

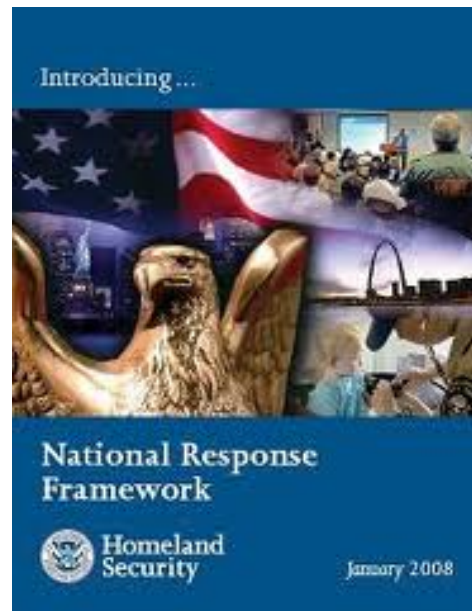
National Incident
Management
System.



Emergency Management Big Picture

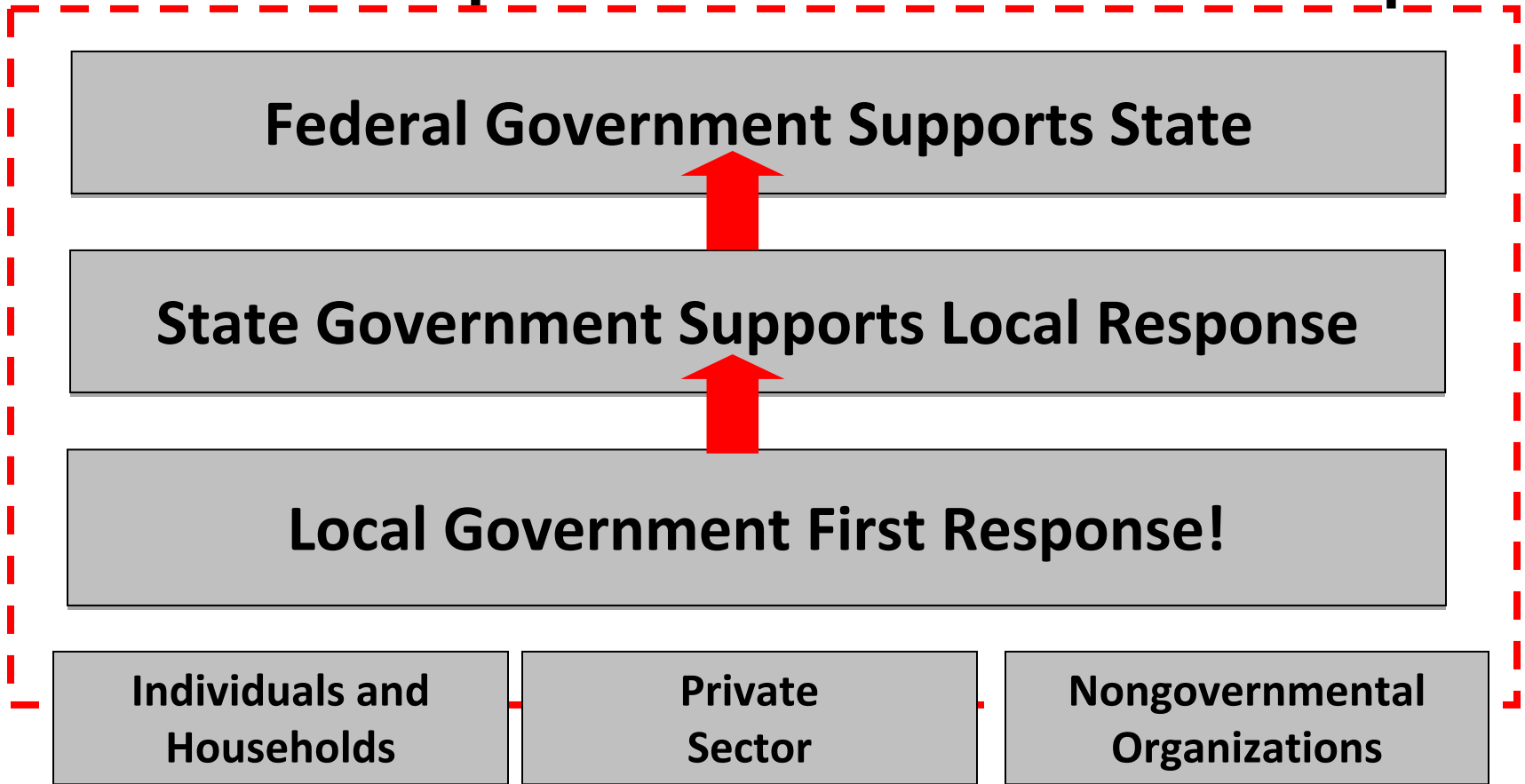
What assistance can we expect from the Federal Government?

The National
Response
Framework





NRF Emphasizes Partnerships



Emergency Management Big Picture

How does this happen in Oregon?

The Office of Emergency
Management

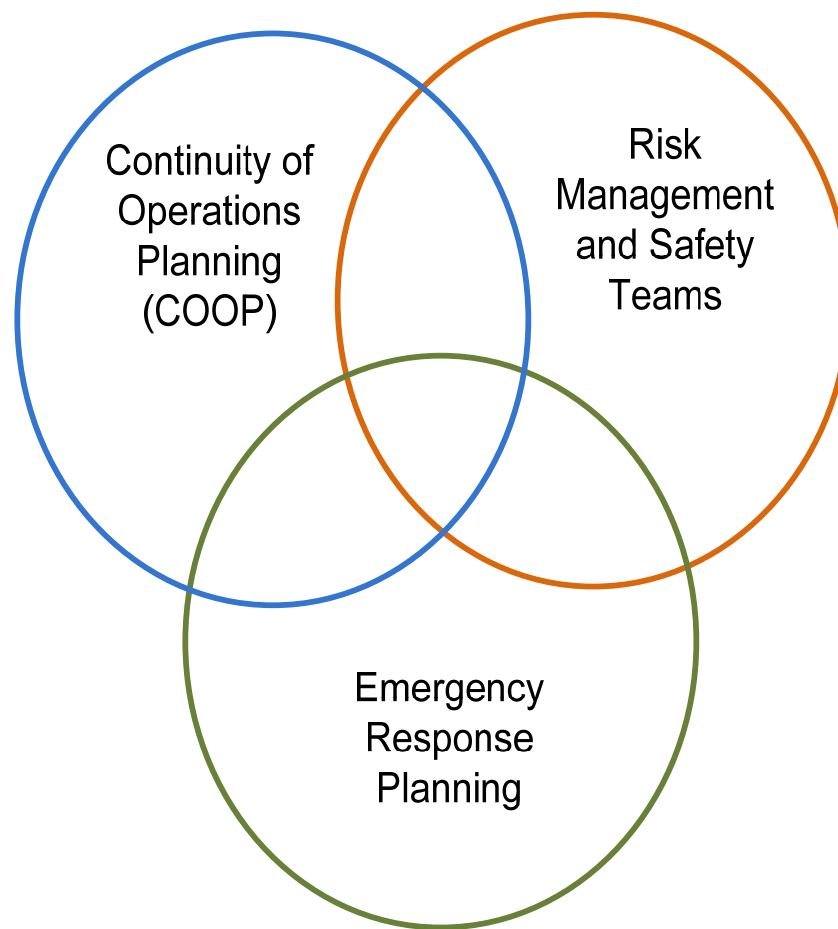


County Emergency Management



**MULTNOMAH
COUNTY**

County Emergency Management



Legal Framework – Duties Regarding Emergency Preparation

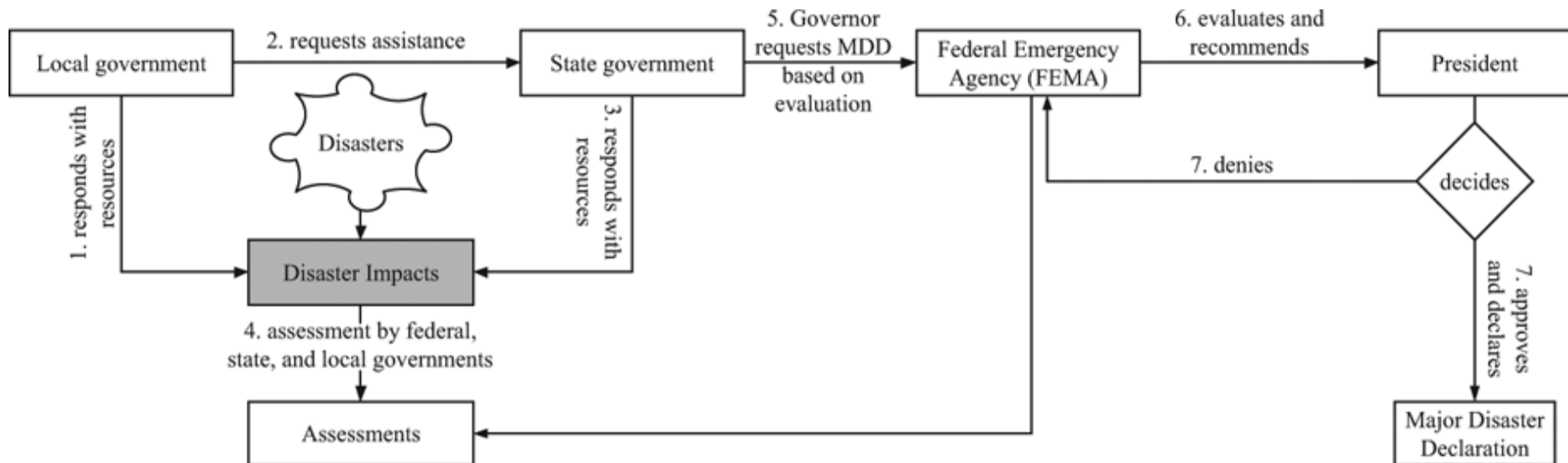
- Establish an emergency management agency;
- Appoint an emergency program manager who shall have responsibility for the organization, administration and operation of such agency, subject to the direction and control of the Chair and Board;
- Provide direction and identify and define the purpose and roles of the individual emergency management programs, specify the responsibilities of the emergency program managers and staff, and establish lines of communication.

Legal Framework – Declaration of Emergency

- Oregon law provides that the “governing body” of the County may declare an emergency. ORS 401.309(1),
- After an emergency is declared, the County is authorized to “carry out any activity to prevent, minimize, respond to or recover from an emergency.” ORS 401.309(2).
- By Code, the authority to declare and respond to an emergency has been delegated to the Chair. MCC § 25.450.
- After emergency is declared, the Chair may order any actions that are necessary to address and alleviate the emergency, including:
 - Implement the Emergency Operations Plan;
 - Impose a curfew that prohibits people from entering designated public areas;
 - Commandeer private property to cope with emergency;
 - Prescribe routes, modes of transportation, and destinations in connection with evacuation within the county.
- The state of emergency continues until the Chair determines that the need for emergency no longer exists. However, the Chair’s declaration may not last for more than 30 days.
- The declaration of emergency may be extended or terminated at any time the Board.

Roles of the Board

- Make emergency and disaster declarations



Roles of the Board

- Communicate with the public
- Coordinate with other elected officials



Roles of the Board

- Provide policy guidance
- Create or change policy
- Receive briefings from staff



Roles of the Board

Emergency Management Institute



FEMA


This Certificate of Achievement is to acknowledge that

TAYLOR D DEWEY

has reaffirmed a dedication to serve in times of crisis through continued professional development and completion of the independent study course:

**IS-00100
Introduction to the Incident Command System,
(ICS 100)**

Issued this 6th Day of July, 2008


Cortez Lawrence, PhD
Superintendent
Emergency Management Institute

0.3 CEU

- Additional opportunities for training and education
- On-line
- Local and regional training
- Emergency Management Institute

Roles of the Board

- Lead recovery efforts



ICS Simulation: The Local Emergency Management Environment

By Luis Hernandez
County Response Coordinator

Objectives

- Illustrate how emergency response concepts and local relationships together could unfold into a local emergency management environment
- Illustrate how coordination is different from command and why they depend on each other
- Identify the position of the policy group with respect to the local emergency management environment

Legend
Command _____

Many Unique
Incident
Objectives



Potentially Conflicting Strategies

Intersection
Incident
Command Post

Bridge
Incident
Command Post

Shelter
Incident
Command Post

POD Incident
Command Post

Evacuation
Unified Incident
Command Post

Search & Rescue
Incident Command
Post

Utilities
Incident
Command Post

Local Community

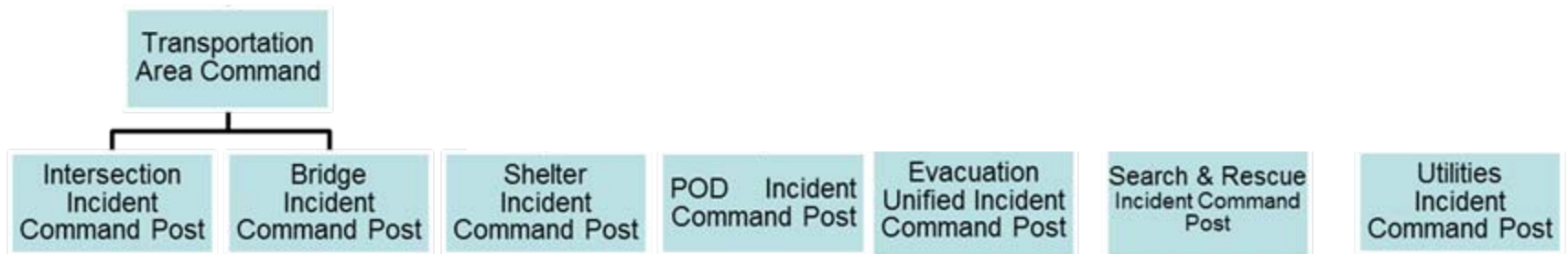
Legend
Command _____



Scope

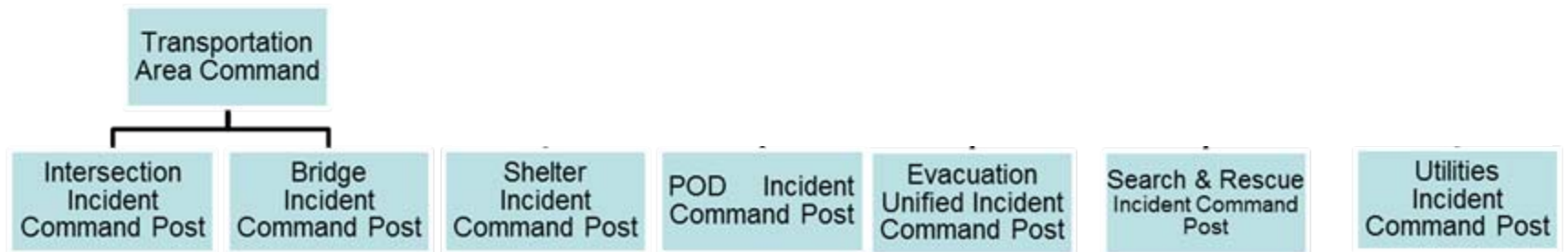
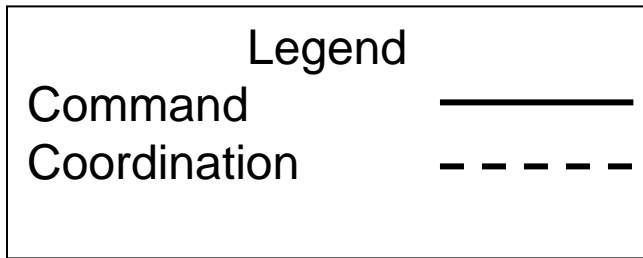


Resources



Local Community





In Summary

- We walked through a possible local emergency management environment exploring command and coordination along with taking into account some local relationships
- Looked at how coordination supports the incident response
- We also framed out from what vantage point, the county level policy group interfaces with the incident response

Review

- Emergency Management “Big Picture”
- County Emergency Management
- Legal Aspects of Emergency Management
- Roll of the Board of Commissioners

Questions?