

City/County Briefing on Proposed Office of Homeless Services



April 12, 2016

Agenda



1. Introductions
2. Agenda Review
3. Background
4. What We Know
5. Next Steps
6. Questions

Background: Joint Office of Homeless Services

2.

Conceptual Agreement

Joint Office will provide an opportunity to align homeless service delivery across jurisdictions to improve the strategic provision of homeless services.

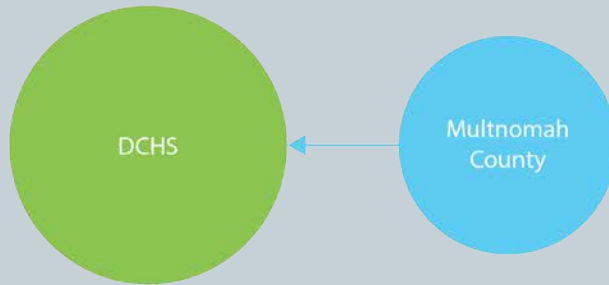
Background: Historical Timeline

3.

- **Urban Services Policy & Resolution A (1983)** – Framework for division of responsibilities between City and County. Described as “obsolete” by City of Portland Auditor (2013)
- **10 Year Plan to End Homelessness (2004)** – City & County adopted plan focused on chronic homelessness
- **City Auditor Report (2009)** – Recommends reducing fragmentation and consolidation of human services in order to improve progress on homelessness
- **Reset 10 Year Plan to End Homelessness (2012)** – Recommends shared governance and assessment of viability of “lead agency” to oversee implementation of homeless services
- **A Home for Everyone (2014)** – Shared governance structure established; data driven and prioritized vulnerable populations; coordinated budgeting. “Lead Agency” discussions begin.
- **Ending Veteran Homelessness (2015)** – First HFE prioritized population; local resources leveraged federal investments; highly effective collaboration.
- **Proposed Joint City/County Office of Homeless Services (2016)**

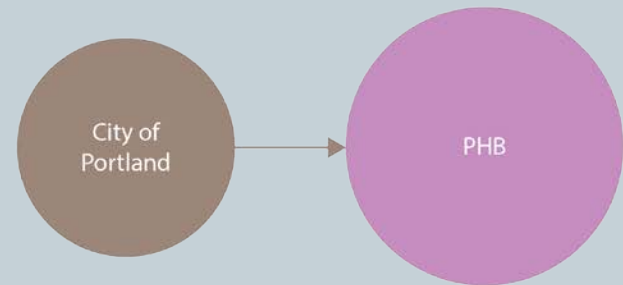
Background: Historic Division of Services

4.



SERVING FAMILIES, YOUTH AND DV

- **HUD Continuum of Care funding**
- **Information & referral, access, training**
- **Housing placement & retention services**
- **Transitional supportive housing services**
- **Permanent supportive housing services**
- **Employment, benefits, health care services**
- **Emergency services**

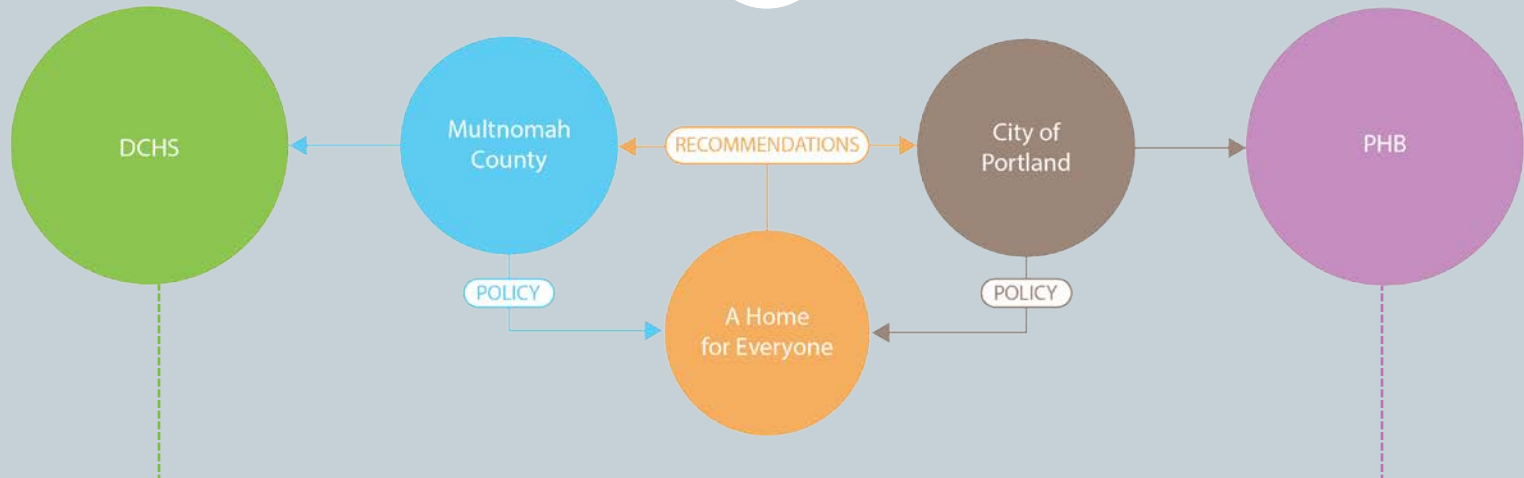


SERVING SINGLE ADULTS

- **HUD Continuum of Care administration**
- **Information & referral, access, training**
- **Housing placement & retention services**
- **Transitional supportive housing services**
- **Permanent supportive housing services**
- **Employment, benefits, health care services**
- **Emergency services**

Background: Creation of A Home For Everyone

5.



SERVING FAMILIES, YOUTH AND DV

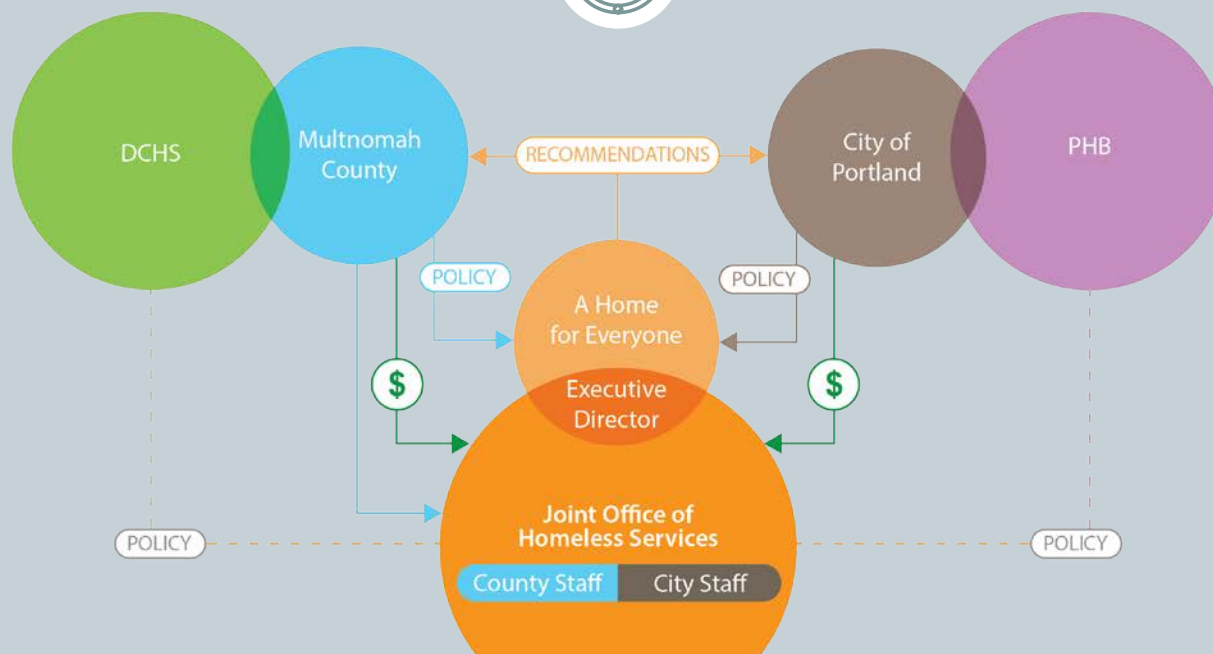
- **HUD Continuum of Care funding**
- **Information & referral, access, training**
- **Housing placement & retention services**
- **Transitional supportive housing services**
- **Permanent supportive housing services**
- **Employment, benefits, health care services**
- **Emergency services**

SERVING SINGLE ADULTS

- **HUD Continuum of Care administration**
- **Information & referral, access, training**
- **Housing placement & retention services**
- **Transitional supportive housing services**
- **Permanent supportive housing services**
- **Employment, benefits, health care services**
- **Emergency services**

Background: Proposed Joint Office of Homeless Services

6.



COMBINED SERVICES FOR SINGLES, FAMILIES, YOUTH AND DV:

- HUD Continuum of Care funding and administration
- Information & referral, access, training
- Housing placement & retention services
- Transitional & permanent supportive housing*
- Employment, benefits, health care services
- Emergency services

* Shared responsibility with PHB

Background: Joint Office of Homeless Services is Proposed

7.

- **Steering Committee formed (February, 2016) to:**
 - Guide formation of Joint Office
 - Create budget proposals
 - Propose IGA
 - Ensure all laws and rules followed
 - Target July 1, 2016 implementation



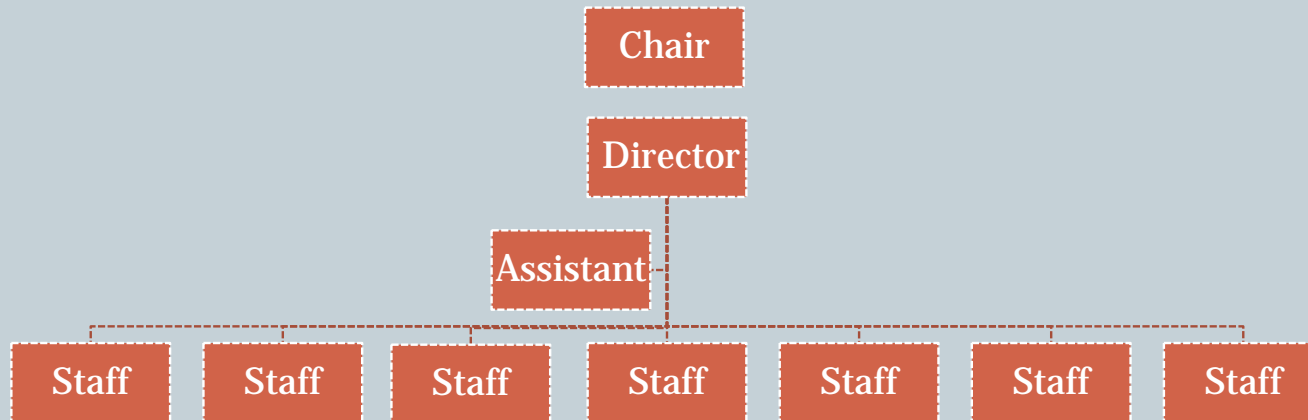
What We Know: Office Structure

8.

- **High level configuration***

- Office in Non-Departmental
- Reports to Multnomah County Chair

2.00 FTE AHFE
3.00 FTE DCHS
4.00 FTE PHB
9.00 FTE



*This chart does not include Business Services support staff and functions

What We Know: Governance

9.

- **Elements of an IGA:**
 - Recognizes the City and County have lines of authority and decision making processes that don't go away and cannot be transferred to the Office.
 - Principles of joint funding, policy, and alignment of services
 - Alignment across entities (Departments / Bureaus)
 - Transfer of City and County employees to Office.
 - Transfer of City and County funds to Office.
 - Transfer of City and County contracts to Office.
 - Renewal Provisions
- **Other?**

What We Know: Services

10.

What Stays at City PHB	What Stays at DCHS
Housing Development / Preservation	Housing Stability
Permanent Supportive Housing*	Income and Benefits Acquisition
Tenant Protections Policy / Planning / Implementation	Economic Stability Policy and Planning
HMIS Data Management	DV Prevention and System Coordination

Joint City/County Office of Homeless Services

Access & Stabilization

Permanent Supportive Housing Policy*

Rapid Re-housing

Shelter & Emergency Services

Grant Management & Administration

** Permanent Supportive Housing will remain a shared responsibility*

Next Steps

11.

- Gather questions, hopes, concerns
- City and County budget briefings (May)
- City and County Approve IGA
- City and County Adopt Budgets (May/June)
- Implement (July)

Questions

12.

