

MULTNOMAH COUNTY OREGON

BOARD OF COUNTY COMMISSIONERS
ROOM 605, COUNTY COURTHOUSE
1021 S.W. FOURTH AVENUE
PORTLAND, OREGON 97204

GLADYS McCOY • Chair • 248-3308
PAULINE ANDERSON • District 1 • 248-5220
GRETCHEN KAFOURY • District 2 • 248-5219
CAROLINE MILLER • District 3 • 248-5217
POLLY CASTERLINE • District 4 • 248-5213
JANE McGARVIN • Clerk • 248-3277

AGENDA OF
MEETINGS OF THE MULTNOMAH COUNTY BOARD OF COMMISSIONERS
FOR THE WEEK OF
October 24-28, 1988

Tuesday, October 25, 1988 - 8:30 AM - Legislative Matters. Page 2
9:30 AM - Justice Services Workshop

There will not be an Informal Meeting Tuesday afternoon

NOTE The following meetings will be held at Sunnyside Inn - I-205 & Sunnyside Road, Clackamas County

Tuesday, October 25, 1988 - 1:30 PM - (Autumn Room) -Joint Meeting.
with Clackamas County CommissionersPage 3

2:30 PM - (Cascade Room) Meeting with
Senator Mark O. HatfieldPage 3

Thursday, October 27, 1988 - 9:30 AM - Formal.Page 4

Thursday, October 27, 1988 - 1:30 PM - Strategic Planning. Page 6
Meeting

Tuesday, October 25, 1988 - 8:30 AM

Multnomah County Courthouse, Room 602

1. Informal Review of Bids and Requests for Proposals:
a) Removing Trees etc., at Glendoveer Golf Course
2. Review of proposed 1989 Multnomah County Legislative Agenda
3. Justice Services Workshop (9:30 AM)

Tuesday, October 25, 1988 - 1:30 PM

NOTE: NEW LOCATION

Sunnyside Inn - I-205 & Sunnyside Road

Autumn Room (1:30 PM)

1. Joint meeting with Clackamas County Board of Commissioners to hear update on Joint County Services Survey.

Cascade Room (2:30 PM)

2. Multnomah County and Clackamas County Boards of Commissioners will meet with Senator Mark O. Hatfield to discuss local government concerns

Thursday, October 27, 1988, 9:30 AM
Multnomah County Courthouse, Room 602
Formal Agenda

REGULAR AGENDA

BOARD OF COUNTY COMMISSIONERS

- R-1 In the matter of the appointment of Chareundi Van-Si and Eugene L. Bui, representing the private sector, to the Administering Board of Metropolitan Community Action
- R-2 In the matter of the appointment of the following to the Citizens Budget Advisory Committee:
General Services: Lester Britton, Position #3 (term.-10/91)
Non-Departmental: Randall Crawford - Position #5 (term-10/91)
Human Services: Sue Shaw - Pos. #7 (term. - 10/89); Roger Buchanan - Pos. #2 (term.- 10/90); Doug Montgomery - Pos. #4 (term. - 10/91); Muriel Goldman - Pos. #5 (term. - 10/91); Ann Porter - Pos. #6 (term. - 10/89); Susan Oliver - Pos. #1 (term. - 10/90); Lillian Cunningham - Pos. #3 (term. - 10/91); Janet Billings, Gerald Blake, Glandion Carney, and Nancy Stevens (term. - 10/89); Carole Murdock and Ethelyn Pankratz (term. 10/90); and Steve Fullmer and Nady Tan (term. - 10/91);
- R-3 In the matter of the appointment of Richard Schwarz to the Dept. of Human Services Central Advisory Board and Citizen Budget Advisory Committee
- R-4 In the matter of the appointments to the Juvenile Service Commission - Lay representatives: Vanhlang Khamsouk, Pos. #2 and Manuel Alvarado, Pos. #10 (term. 8/29/90); and Rose Hill, Pos. #4 (term. 8/29/92); and Professional representative: Angelina De LaTorre, Pos. #12 (term. 8/29/92)

SERVICE DISTRICT

(Recess as the Board of County Commissioners and reconvene as the governing body of the Dunthorpe Riverdale Service District No. 1)

- R-5 Resolution Annexation No. 11 - In the Matter of Annexation of Certain Real Property to the Dunthorpe Riverdale Service District No. 1

(Recess as the governing body of the Dunthorpe Riverdale Service District No. 1 and reconvene as the Board of County Commissioners)

DEPARTMENT OF HUMAN SERVICES

- R-6 In the matter of ratification of an amended intergovernmental agreement with Tri-Met to continue the existing services to those transit-disadvantaged elderly who cannot use regular bus service in Multnomah County

DEPARTMENT OF JUSTICE SERVICES

- R-7 In the matter of the ratification of an intergovernmental agreement with Mt. Hood Community College to provide GED instruction to inmates within County Correctional Facility and the Inverness Jail (this is in addition to services already being provided)

BOARD OF COUNTY COMMISSIONERS

- R-8 In the matter of a request for permission to be absent from the County for thirty days (Gladys McCoy) as per Home Rule Charter 4.40(4)
- R-9 In the matter of the adoption of Multnomah County Legislative Agenda FY 1988/89

Thursday Meetings of the Multnomah County Board of Commissioners are recorded and can be seen at the following times:

Thursday, 10:00 PM, Channel 11 for East and West side subscribers

Friday, 6:00 P.M., Channel 27 for Rogers Multnomah East subscribers

Saturday 12:00 PM, Channel 21 for East Portland and East County subscribers

Thursday, October 27, 1988

1:30 PM - Room 602

County Courthouse

STRATEGIC PLANNING MEETING

A G E N D A

1. Review of Strategic Planning subcommittee decisions regarding structure and membership

COUNTY CHAIR (STUDIES & REPORTS)

DATE SUBMITTED 10/12/88

(For Clerk's Use)

Meeting Date _____

Agenda No. _____

REQUEST FOR PLACEMENT ON THE AGENDA

Subject: Joint County Services Survey

Informal Only* October 25, 1988
(Date)

Formal Only _____
(Date)

DEPARTMENT BCC DIVISION _____

CONTACT Fred Neal TELEPHONE X-3308

*NAME(s) OF PERSON MAKING PRESENTATION TO BOARD Carol Kirchner

BRIEF SUMMARY Should include other alternatives explored, if applicable, and clear statement of rationale for the action requested.

Joint meeting with Clackamas County BCC to hear update on Joint County Services Survey. Will be held at Sunnyside Inn, in Clackamas, Oregon.

(IF ADDITIONAL SPACE IS NEEDED, PLEASE USE REVERSE SIDE)

ACTION REQUESTED:

☒ INFORMATION ONLY ☐ PRELIMINARY APPROVAL ☐ POLICY DIRECTION ☐ APPROVAL

INDICATE THE ESTIMATED TIME NEEDED ON AGENDA 1 hour

IMPACT:

☐ PERSONNEL
☐ FISCAL/BUDGETARY
☐ General Fund
☐ Other _____

BOARD OF
COUNTY COMMISSIONERS
1988 OCT 18 PM 4:24
MULTNOMAH COUNTY
OREGON

SIGNATURES:

DEPARTMENT HEAD, ELECTED OFFICIAL, or COUNTY COMMISSIONER: *Gladys McCall*

BUDGET / PERSONNEL /

COUNTY COUNSEL (Ordinances, Resolutions, Agreements, Contracts) _____

OTHER _____
(Purchasing, Facilities Management, etc.)

NOTE: If requesting unanimous consent, state situation requiring emergency action on back.

CATALOGUE OF SERVICES

Provided by Clackamas & Multnomah Counties

PRELIMINARY REPORT October 25, 1988

PREPARED FOR: Clackamas and Multnomah County
Boards of County Commissioners

Prepared by: Carol F. Kirchner
6137 S.W. 47th Ave.
Portland, Oregon
Tel. 293-1643

INTRODUCTION

October 25, 1988

This catalogue of county services was developed at the request of the boards of county commissioners of Clackamas and Multnomah counties.

The intention was to collect information about the services each county provides in such a way as to be able to compare the types and level of services. In order to accomplish a comparison, the information has been ordered by type of service, or function, and is not a description of each county -- department by department.

Information gathered from interviews (over 50), materials provided by staff of the various departments, preliminary budget documents, and printed budgets form the basis of what is reported in this catalogue. In most instances, the material has been reviewed by each department. Generally -- but not always -- comments and changes have been incorporated.

The limits of this catalogue, I trust, are obvious. What is reported here is based on the information available during the three months of the project. The catalogue is not meant to be a definitive description of each program, each department, each office of county government in both counties. Further, this catalogue reports the county organization of services as they were in September of 1988 and not as they may be today, October 25th, or in the future.

The greater part of this catalogue is an alphabetical listing of services. For each service there is a cover sheet which briefly lists the activities related to that service, which departments, offices or agencies in each county perform that service, and activities the two counties jointly perform. Following the cover sheet is a county by county description of the service provided. The last piece for each service section is a summary of the administrative support -- not otherwise noted -- connected to that section.

As an introduction to the actual listing of services you will find some descriptive information about the counties which may help to form a picture of the resources and constraints facing each county.

In the final section, staff comments are reported on the efficacy of improved coordination or consolidation of activities between the counties.

Carol F. Kirchner

TABLE OF CONTENTS

Introduction	
Table of Contents	i-iii
Facts About The Counties	iv-v
Portland/Metro Region Map	vi
Clackamas County Organizational Chart	vii
Multnomah County Organizational Structure	viii
Listing of Services	1
Aging Services	2-5
Animal Control	6-9
Assessment & Taxation	10-17
Building Regulation	18-20
Cable Regulation	21-22
Citizen Involvement Committee	23-24
Community Services	25-30
Corrections	31-37
County Fair	38-40
County Forest	41-42
County Law Library	43
Cty. Service Districts & Local Improvement Projects..	44-46
District Attorney	47-50
Economic Development	51-54
Employment Services & Job Training	55-56
Elections	57-60
Family Court Services	61-63

General Support Services	64-65
Planning & Budget	66-67
Finance	68-69
County Counsel	70-71
Public Documents	72-73
Records Management	74-75
Facilities & Property Management	76-77
Motor Pool/Equipment Maintenance	78-79
Telephone, Radio & Electronic Services	80-81
Purchasing	82-83
Information Systems	84-85
Printing	86-87
Employee Relations	88-89
Performance Auditing	90-91
Labor Relations	92-93
Public Affairs/Public Information	94-95
Mailing & Distribution	96-97
Planning & Administrative Support	98
Juvenile Services	99
Juvenile Court	100-101
Youth Programs-Counselling & Treatment	102-105
Planning and Administration	106
Land Use Planning	107-110
Law Enforcement	111-116
Libraries	117-120

Licenses/Passports	121-123
Long Term Care for Elderly & Disabled	124-127
Mental Health Services	128-135
Parks	136-139
Public Health Services	140-148
Public Housing	149
Public Safety Communications	150-151
Solid Waste	152-154
Surveying	155-158
Tax Supervising & Conservation Commissioner	159
Transportation and Public Works	160-164
Veterans Services	165-166
Comments	167-170

FACTS ABOUT THE COUNTIES

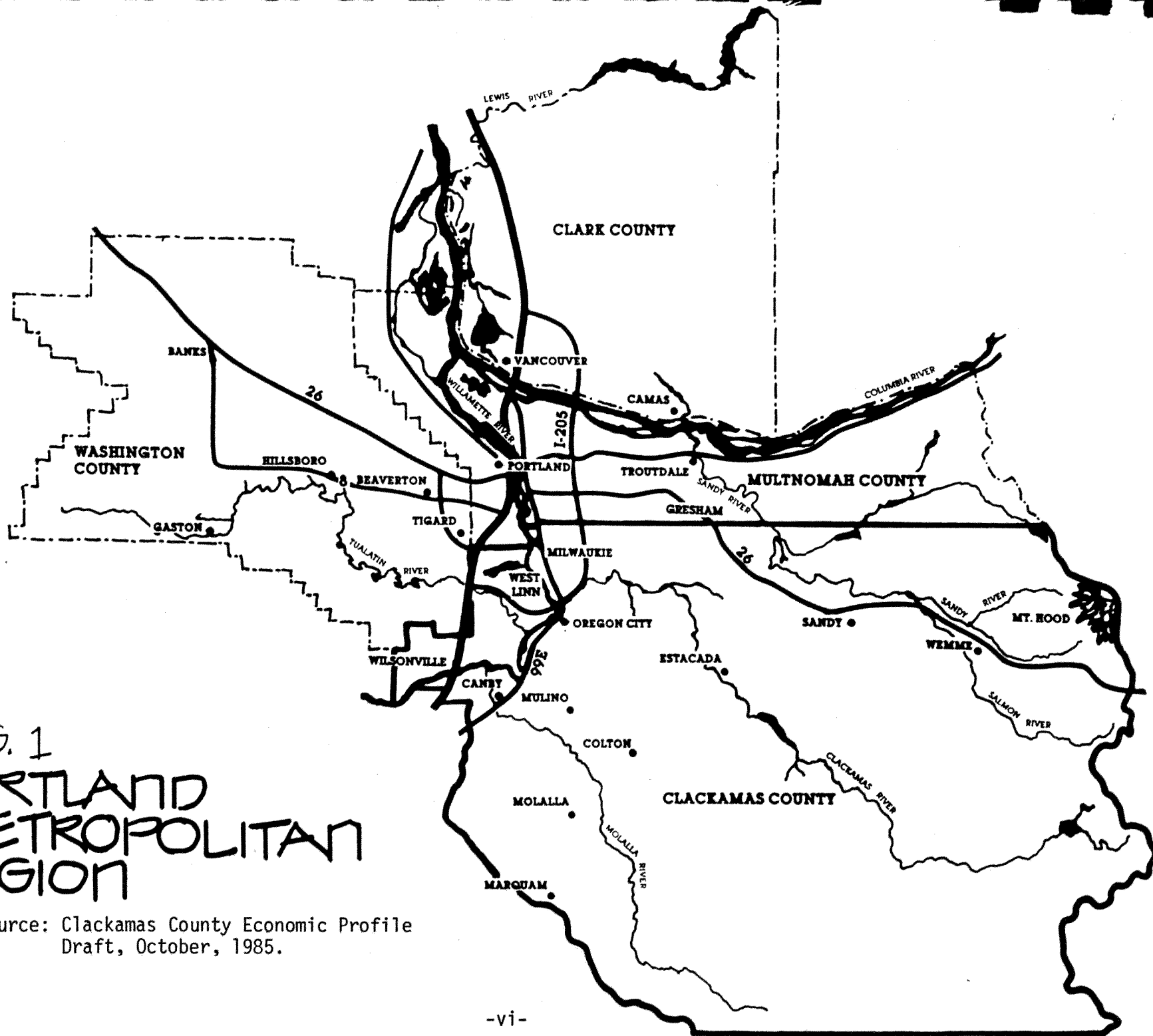
	CLACKAMAS	MULTNOMAH
Total Population (1988)	255,100(1)	562,000(2)
Incorporated Areas	104,874(1)	491,906(2)
Unincorporated Area	150,226(1)	70,094(2)
Total Square Miles	1,893(3)	457(4)
Amount in Mt. Hood National Forest	Approx. 1/2 total area	11.5
Cities & Population within County	13 cities, of which 4 are joint cities (1): Canby 8,070 Estacada 1,196 Gladstone 9,680 Happy Valley 1,505 Milwaukie 18,435 Molalla 3,215 Oregon City 14,770 Sandy and 3,630 West Linn 13,660 Joint Cities: Portland 690 Wilsonville 4,355 Tualatin 148 Lake Oswego 25,620	7 cities, of which 2 are joint cities (2): Joint Cities: Portland 419,810 Lake Oswego 1,360 Gresham 58,300 Fairview, Troutdale Maywood Park and Wood Village 12,436
Number of Special Service Districts Providing Municipal Services (exclusive of County Service Districts, Community Colleges, Education Service Districts, School Districts, Port of Portland & METRO)	16 Fire, 2 Sanitary, 22 Water, 1 Park, 1 Street Lighting, 1 Recreation, 1 Vector, 17 Road, 40 Private Water Systems in Mt. Hood Corridor (5)	10 Water, 7 Fire, 2 Road (5)

	CLACKAMAS	MULTNOMAH
Governance Scheme	General Law Three Member Board of Commissioners elected County- wide with an appointed County Manager	Home Rule Charter Five Member Board of Commissioners, 4 elected by District and the Chair County- wide. Chair serves in dual capacity as legislator and administrator
Elected Officials	Total of 9: 3 member Commission, District Attorney, Sheriff, Assessor, Surveyor, County Clerk and Treasurer	Total of 8: 5 member Commission, District Attorney, Sheriff and Auditor
Number of Employees	1,076(6)	2,200(1)
Total Budget	\$19,562,902	\$256,446,286

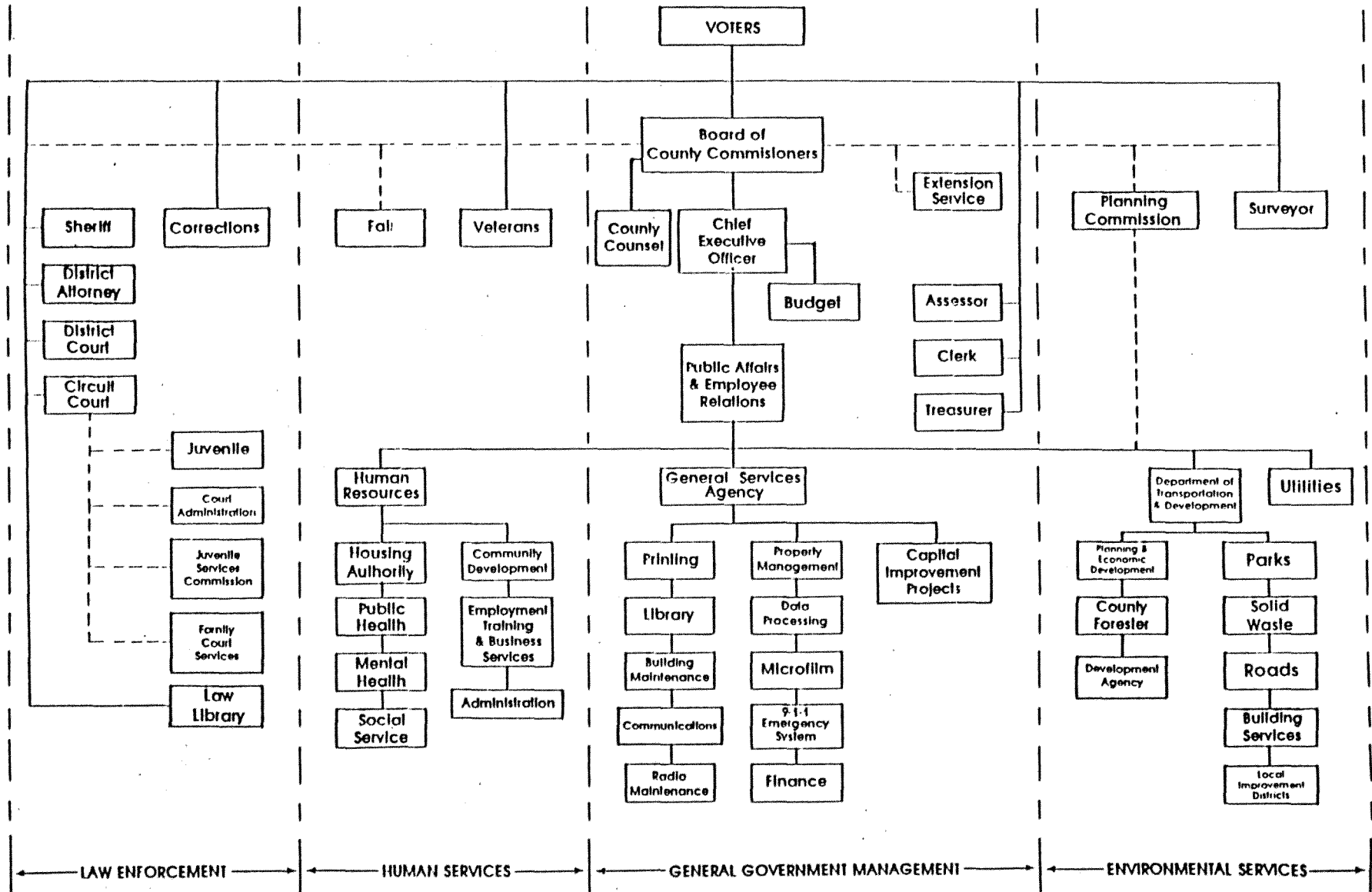
- (1) Center for Population Studies, Oct. 1988
- (2) Susan McPherson, City of Portland Annexation Bureau, Oct. 1988
- (3) Clackamas County Economic Profile, Draft Oct. 1985
- (4) Multnomah County Comprehensive Framework Plan, Volume One Findings
- (5) Ken Martin, Portland Metropolitan Local Area Boundary Commission, Oct. 1988
- (6) Civil Service & Personnel, Clackamas County, Oct. 1988
- (7) Employee Services, Multnomah County, Oct. 1988

FIG. 1 PORTLAND METROPOLITAN REGION

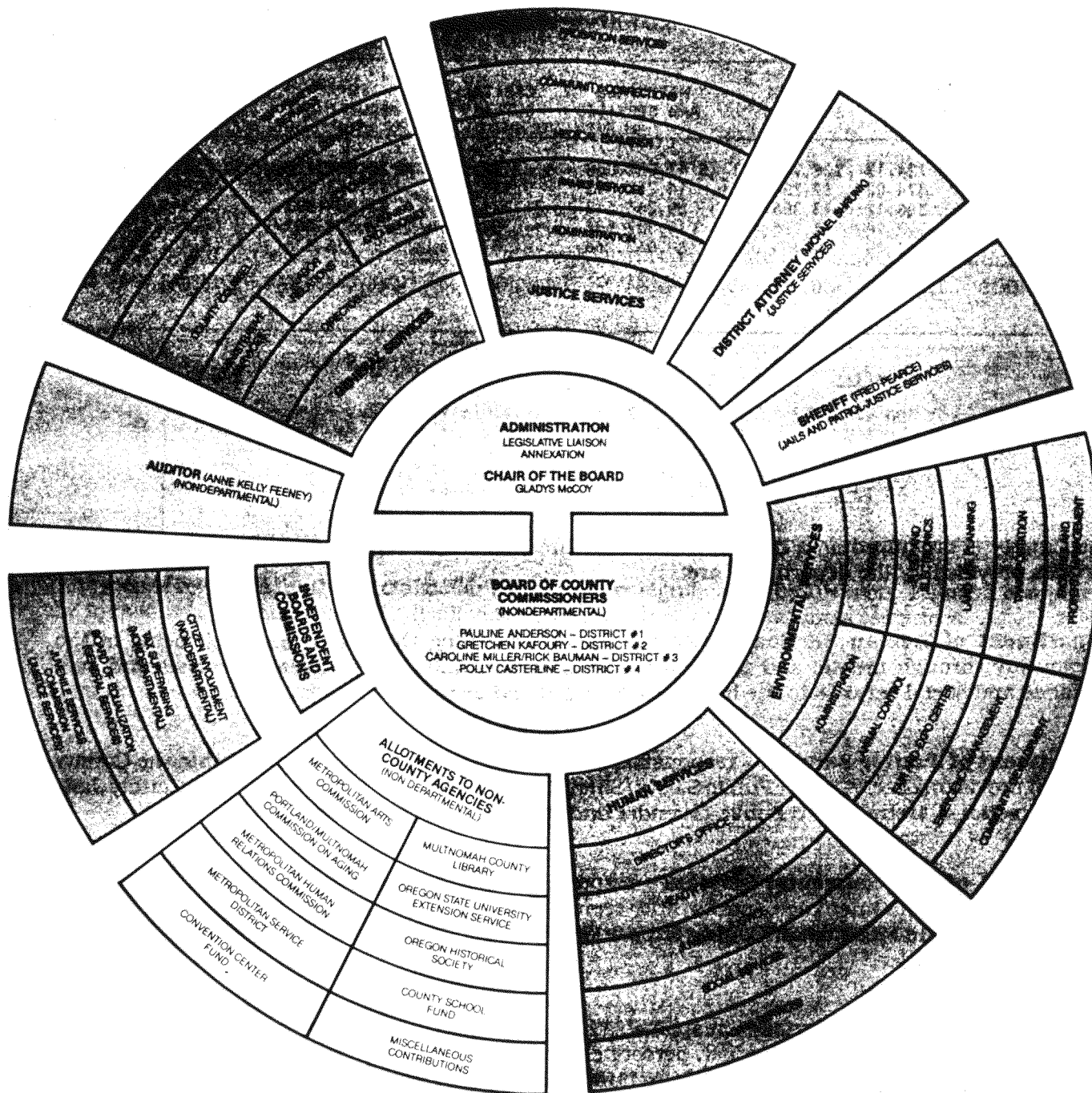
Source: Clackamas County Economic Profile
Draft, October, 1985.



CLACKAMAS COUNTY ORGANIZATIONAL CHART



Source: Clackamas County 1988089 Adopted Budget



MULTNOMAH COUNTY ORGANIZATIONAL STRUCTURE

NOTE: The Sheriff and District Attorney are located in the "Department of Justice Services" while the Executive Board of County Commissioners and Auditor are located in "Nondepartmental".

- ELECTED OFFICIALS AND INDEPENDENT BOARDS AND COMMISSIONS
- DEPARTMENTS (REPORTING TO THE CHAIR)
- ALLOTMENTS TO NON-COUNTY AGENCIES

Source: Multnomah County Summary Budget
1988-89

LISTING OF SERVICES

AGING SERVICES

COMMUNITY BASED HEALTH
AND SOCIAL SERVICES
TRANSPORTATION
ADULT HOME LICENSING
INFORMATION AND REFERRAL
VOLUNTEER ACTIVITIES
IN-HOME SERVICES

COUNTY PROVIDERS

MULTNOMAH COUNTY

DEPARTMENT OF HUMAN SERVICES

AGING SERVICES

PORTLAND/MULTNOMAH COUNTY COMMISSION
ON AGING

CONTRACTORS

CLACKAMAS COUNTY

DEPARTMENT OF HUMAN SERVICES
SOCIAL SERVICES DIVISION
AREA AGENCY ON AGING

CONTRACTORS

EXISTING JOINT ACTIVITIES

CLACKAMAS COUNTY

SERVICE: Aging Services

DETAIL: Provide a range of services for the elderly, including information and referral, representative payee, legal assistance, recreation and volunteer activities, congregate meals, transportation and focal point services at eight Senior Centers throughout the County. In-home services include respite for caregivers and Senior Companion programs. Responsible for licensing adult care homes.

TARGET POPULATION: In 1987, senior population was 37,727.

LEVEL OF SERVICE: For the fiscal period '86-'87, 1,200 received "case management" services, 2,324 were provided congregate meals, with another 1,110 receiving home food deliveries and 517 elderly residents received transportation services.

PROVIDERS OF SERVICE: Area Agency on Aging is the lead agency managing the programs provided at the Senior Centers by contract with outside agencies, including Loaves and Fishes. An information and referral system is a direct service of the Area Agency, as is licensing of adult care homes, and supervision of _____ aides that provide in-home care.

REVENUE SOURCES: (88-89)

Almost entirely grant monies,
with 2% county general funds.

PERSONNEL/CONTRACTS

Total Aging staff is
45 FTE and 20 contracts
for all programs.

700 volunteers total
for Aging & Comm.Action.

STRUCTURE: Area Agency on Aging is located within the Social Services Division of the Department of Human Resources. The department is accountable to the Chief Executive Officer for administrative purposes. John Mullin is director of Social Services.

LOCATION: Area Agency is located on Main Street in Oregon City with services provided at eight Senior Centers throughout the County.

CONTACT: John Mullin at 655-8640

MULTNOMAH COUNTY

SERVICE: Aging Services

DETAIL: Provide a range of services including information and referral, recreation and volunteer activities, mental health counselling, legal assistance, transportation, congregate meals and week-end services primarily through nine Senior Centers throughout the County. In-home services include personal and home care, respite for caregivers and the Gatekeeper program. Responsible for licensing adult care homes.

TARGET POPULATION: The senior (60+) population is 107,574.

LEVEL OF SERVICE: For 1988-89 it is anticipated that 25,875 will receive Senior Center services; 8,036 will receive in-home care and 7,289 will be fed at congregate meals.

PROVIDERS OF SERVICE: Aging Services is the lead agency providing oversight, management and planning to the community based services which are contracted out to _____ agencies, including Loaves and Fishes and United Way. Aging Services manages the recruitment and training of 700 in-home aides, and directly licenses the adult care homes.

The Portland Multnomah Commission on Aging advocates on behalf of elderly issues and assists in developing new programs.

REVENUE SOURCES ('88-'89):

PERSONNEL/CONTRACTS

Community based services and
licensing function: 1% other funds,
85% grant, 14% county general funds

3.80 FTE and ____ contracts

Administration for all programs in
the Aging Services Division which
also provides some direct service.

25.66 FTE and ____ contracts

Commission on Aging: All County
general fund.

Staffed by City of Portland - 135
volunteers

STRUCTURE: Aging Services is a division of the Department of Human Services. The Department is accountable to the County Chair for administrative purposes. Portland/Multnomah Commission on Aging is a joint city/county commission. Jim O'Connell is manager of the Aging Services Division.

LOCATION: Aging Services is located on S.W. Stark and nine Senior Centers throughout the County.

CONTACT: Jim O'Connell at 248-3646.

PLANNING AND ADMINISTRATIVE SUPPORT

FOR AGING SERVICES AND LONG TERM CARE

CLACKAMAS COUNTY

No additional personnel are shown for administration and planning for the Area Agency on Aging of the Social Services Division.

Within the Department of Human Services where the Social Services Division is located, the Director has a staff of 5.5 FTE, which supports the activities of the entire department, with 100% other funds.

MULTNOMAH COUNTY

There is a separate section for planning and administration in the Aging Division which has been shown in the detail on Aging Services.

Additionally, within the Department of Human Services, where the Aging Services Division is located, there is a separate Director's Office section of 17 personnel which supports the activities of the entire department, with 99% CGF.

ANIMAL CONTROL

DOGS/CATS/LIVESTOCK/EXOTIC ANIMALS

LICENSING
ADOPTION
SHELTER
EUTHANASIA
DANGEROUS DOGS
SPAY/NEUTER
RESCUE
PROTECTION OF LIVESTOCK

COUNTY PROVIDERS

MULTNOMAH COUNTY

DEPARTMENT OF ENVIRONMENTAL SERV.
ANIMAL CONTROL

CONTRACTORS

CLACKAMAS COUNTY

DEPARTMENT OF HUMAN SERVICES
PUBLIC HEALTH
DOG CONTROL

SHERIFF*

CONTRACTORS

EXISTING JOINT ACTIVITIES

*Elected Official

CLACKAMAS COUNTY

SERVICE: Animal Control

DETAIL: Enforces state and county laws governing the control of dogs including licensing, adoption programs, kenneling and disposal, and responding to animal abuse and animal nuisance complaints for the unincorporated area of the County. Cities receive some limited services. Also investigate complaints and transport and house larger animals (livestock). Special fund allows for partial repayment to livestock owners when livestock is killed by dogs. Cats are not strictly part of program except for disposal; however, cat adoption is attempted. Shelter capacity is for 75 animals with 32 dog runs, 35 small cages and 6 runs for quarantined animals. Operates a door to door pet licensing program.

TARGET POPULATION: There are approximately _____ dogs and cats in the service area, and _____ livestock/farms.*

LEVEL OF SERVICE: During 1987, 3,604 complaints were received; 2,754 citations issued; 3,413 dogs impounded; 554 dogs adopted and 139 cats adopted. It can take up to one hour to respond to some calls.

PROVIDERS OF SERVICE: Dog Control operates the kennel, licensing, field response and adoption program and contracts for disposal with Pathological Waste Disposal and treatment with Barkley Hills Clinic. Sheriff's Department, animal control program, handles the larger animal control and transport.

REVENUE SOURCES ('88-'89);

PERSONNEL/CONTRACTS

Dog Control is totally fee supported.

9 FTE

Animal control is included in Sheriff's Operations Budget.

1 FTE

STRUCTURE: Dog Control is a section of Public Health which is a Division of the Department of Human Services. The Department is accountable to the Chief Executive Officer for administrative purposes. Larrie Williams is the Acting Director of Dog Control. The Sheriff is an independently elected official and responsible for administration of the Sheriff's Department. Bill Brooks is the Sheriff.

LOCATION: Dog Control and the Animal Control program are located on S. Kaen Road, Oregon City.

CONTACT: Larrie Williams at 655-8629, Dog Control and Captain Tim Grolbert at 655-8218, Animal Control.

*Information not available.

MULTNOMAH COUNTY

SERVICE: Animal Control

DETAIL: Operates animal control, including shelter, adoption, licensing, dead stray animal pickup, cruelty investigations, spay/neuter program and community education for the unincorporated areas of Multnomah County and the cities of Portland, Gresham, Troutdale, Wood Village and Fairview. Licenses cats, except in Troutdale. Enforces special dangerous dog ordinance. Provides emergency rescue 7 days a week, 24 hours a day; enforces animal nuisance ordinance 7 days a week, 14 hours a day; removes dead animals 8 hours a day Monday through Friday and impounds dogs 10 hours a day, Monday through Friday. Shelter is open 6 days a week. Shelter has 100 dog kennels with runs; 50 kennels for quarantine; 21 cages for cats and another 7 kennels and 12 cages for contagious animals.

TARGET POPULATION: There are approximately 221,000 dogs and cats in the service area. Control activities cover all animals -- large, small and exotic.

LEVEL OF SERVICE: During fiscal year 86-87 impounded one out of every 12 cats and dogs in the county. During same period calls for service came to 21,238; 19,251 animals were received; 2,762 citations issued; 5,389 spay/neuter surgeries were subsidized; and 53,507 pets were licensed. Average response time for dangerous dogs and rescue is 30 minutes.

PROVIDERS OF SERVICE: Animal Control operates a full service shelter and field staff to respond to calls. Low cost spay/neuter program is a subsidized service performed by 70 participating veterinarians. Contract with Dove Lewis Emergency Vet Clinic for after-hours treatment and a network of six other vet clinics which provide emergency care in exchange for dead animal pickup and cremation.

REVENUE SOURCES ('88-'89):

65% county general fund
35% other

PERSONNEL/CONTRACTS

*43 FTE and various
contracts with nets & after-hours
animal rescue

*During 86-87, 120 volunteers contributed 1,600 hours. Administrative support is included above.

STRUCTURE: Animal Control is a Division of the Department of Environmental Services. The Department is accountable to the County Chair for administrative purposes. Mike Oswald is Director of the Division.

LOCATION: Animal control is located on W. Columbia Highway in Troutdale.

CONTACT: Mike Oswald at 667-7381.

PLANNING AND ADMINISTRATIVE SUPPORT

ANIMAL CONTROL

CLACKAMAS COUNTY

Dog Control section handles all of its own licensing and billing. Other administrative support comes from the Public Health Division which has a separate administrative section of 5 FTE funded by county general funds. Within the Department of Human Services where the Public Health Division is located, there is a separate administration section supporting the activities of the whole department with a staff of 5.5 FTE funded 100% by other funds.

Animal control is a program within the Sheriff's Department and the Department has a separate administrative section which supports the activities of the entire department and is funded, in most part, by a three year serial levy.

MULTNOMAH COUNTY

Within the Department of Environmental Services, where Animal Control is located, there is a separate section for administration. A staff of 7.80 supports the activities of the entire Department using 22% road fund, 36% county general fund and 42% other monies.

ASSESSMENT AND TAXATION

ASSESSMENT & COLLECTION

APPRAISAL
ASSESSMENT ROLL
TAX ROLL
COLLECTIONS

PROPERTY RECORDS

RECORDING
DEED & ACCOUNT MAINTENANCE
CARTOGRAPHY

BOARD OF EQUALIZATION

APPEALS

COUNTY PROVIDERS

MULTNOMAH COUNTY

DEPARTMENT OF GENERAL SERVICES

ASSESSMENT & TAXATION

ADMINISTRATIVE SERVICES

CLACKAMAS COUNTY

DEPARTMENT OF ASSESSMENT &
TAXATION

ASSESSOR AND TAX
COLLECTOR*

COUNTY CLERK*

EXISTING JOINT ACTIVITIES

APPRAISALS AND RATE MAKING ON PROPERTY
CROSSING JURISDICTIONAL BOUNDARIES

*Elected Officials

CLACKAMAS COUNTY

SERVICE: Assessment and Taxation -- Assessment and Collection

DETAIL: Responsible county-wide for appraisal of all property -- real and personal --, establishing tax rate for each taxing district, verifying legality of budgets for districts, and collecting taxes. Collects taxes, appraises property, and other functions as set out by state law and Department of Revenue. Provides for public access to documents and information. Disposes of personal property seized for taxes.

TARGET SERVICE AREA: Currently there are 149 levying districts within the boundaries of the County for which taxes must be extended and collected exclusive of special assessments.

LEVEL OF SERVICE: Total taxes levied in 1987 covered 134,000 pieces of real property, 12,000 items of personal property, utility property and special assessments and amounted to \$215,134,479 on taxable property valued at \$8,810,377,560. Manages overall more than 150,000 accounts yearly. Collected 92% of the taxes levied in 1987.

PROVIDERS OF SERVICE: Assessment and Taxation provides all services directly. Bulk processing is performed by the County's Data Center. Services contracted for include _____.

REVENUE SOURCES ('88-'89):

Primarily funded by county general funds.

PERSONNEL/CONTRACTS

Entire staff of Assessment & Taxation is 70 FTE and 4 temporaries, of which 25 are appraisers.

Administration is included above.

STRUCTURE: The Assessor and Tax Collector is an independently elected official responsible for the administration of the Department. In 1981 the Assessor was appointed to be the Tax Collector by the Board of County Commissioners. George Malin is the Assessor.*

LOCATION: Assessment and Taxation is located on Warener-Milne Road in Oregon City.

CONTACT: Assessor and Tax Collector at 655-8302.

*A new Assessor will be elected on November 8, 1988.

MULTNOMAH COUNTY

SERVICE: Assessment & Taxation -- Assessment and Collection

DETAIL: Responsible county-wide for appraisal of all property -- real and personal --, establishing tax rate for each taxing district, verifying legality of budgets for districts and collecting taxes. Collects taxes, appraises property and other functions as set out by state law and the Department of Revenue. Provides for public access to documents and general information to the public. Holds seizure and sale auctions of personal property four times a year.

TARGET SERVICE AREA: There are 74 levying districts within the boundaries of the County for which taxes must be extended and collected exclusive of special assessments.

LEVEL OF SERVICE: Total taxes levied in 1987 covered 197,187 pieces of real property, 25,411 items of personal property, utility property and special assessments and amounted to \$546,716,994 on taxable property valued at \$20,476,880,841. Manages overall between 275,000 and 300,000 accounts yearly for tax collection. Collected ____% of taxes levied in 1987.

PROVIDERS OF SERVICE: Appraisal and Tax Collection provide all services directly. Daily data entry is performed within the Division; bulk processing is done by another Division, Information Services. Mailing is provided by the City of Portland. Services contracted for include _____.

REVENUE SOURCES ('88-'89):

PERSONNEL/CONTRACTS

Assessment:

Supported entirely by county general funds.

69 FTE and ____ contracts

Collection:

34% county general funds
66% other

25 FTE and ____ contracts

STRUCTURE: Appraisal and Tax Collection are sections of Assessment and Taxation. Assessment and Taxation is a Division of the Department of General Services. The Department is accountable to the County Chair for administrative purposes. Jack Smith is Director of the Division; Robert L. Ellis is the County Assessor and Manager of Appraisal; and Kathy Tuneberg is the Manager of Tax Collection.

LOCATION: Assessment and Taxation is located on S.W. Alder in Portland.

CONTACT: Robert L. Ellis, Appraisal, at 248-3367 and Kathy Tuneberg, Tax Collection, at 248-3326.

CLACKAMAS COUNTY

SERVICE: Assessment and Taxation -- Property Records

DETAIL: Responsible for the recording of all property information, such as deeds, liens, mortgages and plats, updating and maintaining all property tax accounts, mapping of property, as well as complete record of ownership and legal descriptions of property in the County. Provides for public access to such records, as well as general information to the public.

TARGET SERVICE AREA: All property in the County.

LEVEL OF SERVICE: For the fiscal period '87-'88, 59,471 documents were recorded. Annually maintain over 150,000 tax roll descriptions, 115,000 property description cards, over 5,000 corrections, 285 maps, and record and process over 50 new subdivisions and condominiums.

PROVIDERS OF SERVICE: County Clerk records all public documents in the County. Assessment and Taxation maintains all mapping, legal descriptions, ownership and current property tax information. Bulk data processing is done at County's Data Center.

REVENUE SOURCES ('88-'89):

County Clerk:
Entirely fee supported.
includes licensing

Assessment & Taxation::
Primarily funded by county general
funds.

PERSONNEL/CONTRACTS

6 FTE in Recording
Section, which also

Entire staff is 70 FTE
and 4 temporaries

Administration is included above.

STRUCTURE: County Clerk is an independently elected official responsible for administration of the Clerk's Office. The Assessor is also an independently elected official responsible for the administration of the Assessment and Taxation. John Kauffman is the County Clerk and George Malin is the Assessor.*

LOCATION: Assessment and Taxation is located on Warner-Milne Road in Oregon City. County Clerk is in the County Courthouse on Main Street in Oregon City.

CONTACT: Assessor and Tax Collector at 655-8671, and John Kauffman at 655-8551, County Clerk.

*A new Assessor will be elected November 8, 1988.

MULTNOMAH COUNTY

SERVICE: Assessment & Taxation - Property Records

DETAIL: Responsible for the recording of all property information, such as deeds, liens, mortgages and plats, updating and maintaining all property tax accounts, mapping of property, as well as complete record of ownership and legal descriptions of property in the County. Provides for public access to such records and information to the public. Developing computerized mapping system with the Department of Revenue.

TARGET SERVICE AREA: All property in the County.

LEVEL OF SERVICE: In 1987, 111,106 documents were recorded. Annually maintain 20,000 tax roll descriptions, 10,000 property description cards, 9,000 corrections, 687 maps, and record and process 30 new subdivisions and condominiums.

PROVIDERS OF SERVICE: Records Managements provides all services directly. Daily data entry is performed within the Division, with bulk processing done by another Division in the Department, Information Services. Services contracted for include _____.

REVENUE SOURCES ('88-'89):

PERSONNEL/CONTRACTS

13% county general fund
87% other

25 FTE and ____ contracts

STRUCTURE: Records Management is a section of Assessment and Taxation. Assessment and Taxation is a Division of the Department of General Services. The Department is accountable to the County Chair for administrative purposes. Linda Alexander, Director of the Department, is the County Clerk. Jack Smith is Director of the Division and Jim Czmowski manages Records Management.

LOCATION: Assessment and Taxation is located on S.W. Alder in Portland.

CONTACT: Jim Czmowski at 248-3375.

CLACKAMAS COUNTY

SERVICE: Assessment and Taxation -- Board of Equalization

DETAIL: Provides for taxpayer appeal of assessments prior to preparation of Tax Roll in accordance with state law. Board meets four months out of the year.

TARGET POPULATION: Property owners in the County.

LEVEL OF SERVICE: It is anticipated that 1,750 petitions will be filed with the Board during fiscal period '88-'89.

PROVIDERS OF SERVICE: County Clerk provides staff to the Board.

REVENUE SOURCES ('88-'89):

PERSONNEL/CONTRACTS

Supported primarily by county
general funds.

1 FTE and 1 temporary

Administrative support is included above.

STRUCTURE: County Clerk is an independently elected official and responsible for the administration of the Clerk's Office. John Kauffman is the County Clerk.

LOCATION: Board of Equalization hearings are held on Main Street in Oregon City.

CONTACT: John Kauffman at 655-8551

MULTNOMAH COUNTY

SERVICE: Assessment and Taxation -- Board of Equalization

DETAIL: Provides for taxpayer appeal of assessments prior to preparation of Tax Roll in accordance with state law. Board meets four months out of the year.

TARGET POPULATION: Property owners in the County.

LEVEL OF SERVICE: It is anticipated that 4,000 petitions will be filed with the Board during fiscal period 88-89.

PROVIDERS OF SERVICE: Board of Equalization, a section of Administrative Services, provides staff to the Board.

REVENUE SOURCES ('88-'89):

PERSONNEL/CONTRACTS

Supported entirely by
county general funds.

1.5 FTE

STRUCTURE: Administrative Services is a Division of the Department of General Services. The Department is accountable to the County Chair for administrative purposes. Kathy Busse is Manager of Administrative Services.

LOCATION: Board of Equalization is located at 2115 S. E. Morrison.

CONTACT: Kathy Busse at 248-5111.

PLANNING AND ADMINISTRATIVE SUPPORT

ASSESSMENT AND TAXATION

CLACKAMAS COUNTY

All administrative support is included in detail.

MULTNOMAH COUNTY

Within the Assessment and Taxation Division there is a separate administrative section responsible for all data entry and general management of the Division with a staff of 13 supported entirely by county general funds.

Within the Administrative Services Division, where the Board of Equalization is located, there is a separate section responsible for management of the entire Division with a staff equivalent to 1.5 FTE and supported entirely by county general funds.

Within the Department of General Services, where Assessment and Taxation and Administrative Services are located, there is a separate administrative section in the Director's Office which supports the activities of the entire Department with 3 FTE staff funded by county general funds.

BUILDING REGULATION

REVIEW PLANS
INVESTIGATION & INSPECTION
CODE ENFORCEMENT
ISSUE PERMITS
FEASIBILITY STUDIES

COUNTY PROVIDERS

MULTNOMAH COUNTY

Building Regulation is the responsibility of the cities. The County contracts with the cities for these services in the unincorporated areas of the County.

CLACKAMAS COUNTY

DEPARTMENT OF TRANSPORTATION
AND DEVELOPMENT

OPERATIONS
BUILDING SERVICES
COMMUNITY ENVIRONMENT

EXISTING JOINT ACTIVITIES

CLACKAMAS COUNTY

SERVICE: Building Regulation

DETAIL: Responsible for administration and enforcement of the State's specialty codes --structural, mechanical, fire and life safety, plumbing, electrical code and mobile home regulations --, DEQ's subsurface sewage disposal regulations, the County's grading ordinance and dangerous building abatement. Services include permitting, feasibility studies, investigations and inspections, and code violation resolution and/or enforcement. Developing a computerized permit system.

TARGET SERVICE AREA: Subsurface sewage disposal system, electrical code enforcement and county ordinance implementation is conducted county-wide. Plumbing, mechanical and mobile home regulation is provided for for the unincorporated areas of the County and certain cities and special districts. Conducts fire and safety reviews for all fire districts except West Linn and Lake Oswego.

LEVEL OF SERVICE: For the year 1987, 8,957 permits were issued covering all the specialty codes relating to new construction and additions for housing, commercial and industrial structures. Another 120 plumbing plans and 214 existing subsurface disposal systems were reviewed, 378 soil feasibility studies were made, 20 soil investigations completed and 16 pumper truck inspections were made. For the fiscal period 88-89, it is anticipated that the case load for code violations will reach 557.

PROVIDERS OF SERVICE: Building Services provides all permitting, investigations and inspections and feasibility studies services directly. Community Environment operates a code violation program to reduce repeat offenders. Code enforcement includes zoning and land use violations as well as the building codes.

REVENUE SOURCES ('88-'89):

PERSONNEL/CONTRACTS

Building Services: Totally fee supported.

34 FTE

Community Environ.: Totally fee supported.

4.6 FTE

STRUCTURE: Building Services and Community Environment are sections of Operations which is a Division of the Department of Transportation and Development. The Department is accountable to the Chief Executive Officer for administrative purposes. Richard Dopp is Director of the Operations Division. Mike Cliburn is the Administrator of Building Services and Dave Phillips is the Administrator of Community Environment.

LOCATION: Building Services is located on Abernethy Road in Oregon City.

CONTACT: Richard Dopp at 655-8521.

PLANNING AND ADMINISTRATIVE SUPPORT

BUILDING REGULATION

CLACKAMAS COUNTY

Within the Operations Division, where Building Services and Community Environment are located, there is a separate administration section with a staff of 16 which supports the activities of the entire Department of Transportation and Development with funding from the road fund.

Within the Department of Transportation and Development, where Operations is located, there is a separate administrative section of 10 staff which provides general overhead support for the entire Department with funding from the road fund.

CABLE REGULATION

COUNTY PROVIDERS

MULTNOMAH COUNTY

CLACKAMAS COUNTY

DEPARTMENT OF GENERAL SERVICES

ADMINISTRATIVE SERVICES
CABLE OFFICE

EXISTING JOINT ACTIVITIES

MULTNOMAH COUNTY

SERVICE: Cable Regulation

DETAIL: The Cable Regulatory Commission manages franchise agreements with Rogers Cable - Multnomah East and Columbia Cable, and the contracts with Multnomah Cable Access Center and Mt. Hood Community College for Gresham, Troutdale, Fairview, Wood Village and unincorporated Multnomah County.

TARGET SERVICE AREA: Unincorporated areas of Multnomah County as well as the cities of Gresham, Troutdale, Fairview, Wood Village and some annexed areas of Portland.

LEVEL OF SERVICE: Management includes monitoring of franchise compliance with contracts and responding to consumer complaints.

PROVIDERS OF SERVICE: Cable Office provides staff to the Cable Regulatory Commission.

REVENUE SOURCES ('88-'89):

PERSONNEL/CONTRACTS

Supported by franchise fees.

2 FTE and 9 contracts

Some administrative support is provided by the Administrative Services Division and the Department of General Services.

STRUCTURE: Cable Office is a section of Administrative Services. Administrative Services is a Division of the Department of General Services. The Department is accountable to the County Chair for administrative purposes. Kathy Busse is Manager of the Division.

LOCATION: Cable Office is located in the Portland Building on S.W. Fifth in Portland.

CONTACT: Kathy Busse at 248-5111.

CITIZEN INVOLVEMENT COMMITTEE

COUNTY PROVIDERS

MULTNOMAH COUNTY

CLACKAMAS COUNTY

THE CITIZEN INVOLVEMENT
COMMITTEE

EXISTING JOINT ACTIVITIES

MULTNOMAH COUNTY

SERVICE: Citizen Involvement Committee

DETAIL: Provides a structured forum for citizens to participate in the decisions of County government.

TARGET POPULATION: Entire County.

LEVEL OF SERVICE: Prints and distributes newsletters for neighborhood groups in the unincorporated portions of County; provides for over 40 citizen advisory groups to review budgets and policies of various County functions; involves citizens in "needs assessment" process; receives citizen complaints; and publishes services directory and handbook. Committee meets monthly and issues a newsletter.

PROVIDERS OF SERVICE: The Citizen Involvement Committee provides all services directly.

REVENUE SOURCES ('88-'89):

Supported entirely by county general funds except as noted under personnel/contracts.

PERSONNEL/CONTRACTS

2 county funded and 2 paid by AARP and 4 volunteers.

Administration is included above.

STRUCTURE: The Committee was formed in 1984 by County Charter amendment. The Committee reports directly to the Chair and the County Board of Commissioners and is responsible for its own administration. Merlin Reynolds is the Coordinator of the Committee.

LOCATION: The Committee's Office is located on S.E. Morrison in Portland.

CONTACT: Merlin Reynolds at 248-3450.

COMMUNITY SERVICES

INFORMATION AND REFERRAL
EMERGENCY SERVICES
COMMUNITY DEVELOPMENT

COUNTY PROVIDERS

MULTNOMAH COUNTY

DEPARTMENT OF HUMAN SERVICES

DEPARTMENT OF ENVIRONMENTAL
SERVICES
COMMUNITY DEVELOPMENT

CONTRACTORS

CLACKAMAS COUNTY

DEPARTMENT OF HUMAN SERVICES
SOCIAL SERVICES DIVISION

DEPARTMENT OF HUMAN SERVICES
COMMUNITY DEVELOPMENT

DEPARTMENT OF HUMAN SERVICES
EMPLOYMENT, TRAINING &
BUSINESS SERVICES

CONTRACTORS

EXISTING JOINT ACTIVITIES

FEMA BOARD
HOMELESS SHELTER
FOOD BANK

CLACKAMAS COUNTY

SERVICE: Community Development

DETAIL: Administers U.S. Department of Housing and Urban Development Community Development Block Grant and other housing related grant programs for all of Clackamas County, including the incorporated cities. Primarily fund housing, public facilities & neighborhood revitalization projects that benefit low to moderate income persons. Projects are determined by local citizen policy advisory committees and Board of County Commissioners. Priorities for 88-90 funding give equal weight to housing and economic development, with neighborhood improvements scheduled to receive slightly more.

TARGET POPULATION: Basis of grant is total population of entitlement area surpassing 200,000. Population estimate for 88-89 for entitlement area (all of Clackamas County) is 253,700 according to State Employment Division. Low to moderate income population varies by area.

LEVEL OF SERVICE: Scheduled for 1988 - 1990, \$4,946,000 will be spent on 44 projects and programs. (Amount includes contingency, general administration, local match, and carryover/program income).

PROVIDERS OF SERVICE: Community Development Division is the lead agency administering the block grant & housing rehabilitation programs and provides planning, citizen participation, needs analysis, finance, underwriting and inspection services and project management.

REVENUE SOURCES ('88-'89):

PERSONNEL/CONTRACTS

90% grant
and 10% other general funds

9 FTE

Administrative support is included.

STRUCTURE: Community Development is a division within the Department of Human Services. The department is accountable to the Chief Executive Officer for administrative purposes. Gary DiCenzo is manager of the Division.

LOCATION: Community Development is located at Marylhurst College.

CONTACT: Gary DiCenzo at 655-8591.

MULTNOMAH COUNTY

SERVICE: Community Development

DETAIL: Administers U.S. Department of Housing and Urban Development Community Development Block Grant program and other grant funds for all of Multnomah County except the City of Portland. Primarily fund neighborhood revitalization projects that benefit low to middle income persons. Projects are determined by local citizen advisory committees and Board of County Commissioners. Priorities for 87-90 funding give equal weight to neighborhood revitalization and housing rehabilitation, with economic development receiving less. Significant focus is in "special needs" housing development and related services.

TARGET POPULATION: Basis of grant is total population of entitlement area surpassing 200,000. Population estimate for '88-'89 for entitlement area is _____. Low to middle income population is expected to reach _____ for same time period.

LEVEL OF SERVICE: For the period '88-'90, \$ _____ will be spent on _____ projects. (Amount includes contingency, general administration and carryovers/income).

*Funding may discontinue after 1990 due to loss of County population to incorporated cities.

PROVIDERS OF SERVICE: Community Development Division is the lead agency administering the grant programs and provides planning, citizen participation, needs analysis, finance and underwriting services and acts as collecting agent for loans.

REVENUE SOURCES ('88-'89):

PERSONNEL/CONTRACTS

90% grant
4% county general funds
6% other funds

12 FTE

Administrative support is included.

STRUCTURE: Community Development is a division within the Department of Environmental Services. The department is accountable to the County Chair for administrative purposes. Jane Burda is manager of the Division.

LOCATION: Community Development is located on S.E. Morrison.

CONTACT: Jane Burda at 248-3631.

CLACKAMAS COUNTY

SERVICE: Community Services -- Basic and Emergency.

DETAIL: Provides services connected to Community Action programs, including emergency housing, food boxes, clothing, vouchers for personal needs, rent assistance, energy assistance and weatherization. Services are delivered at four service centers through County and at Oregon City headquarters. Catalogues information and referral resources which are located at 26 sites. New grassroots information and referral service has been initiated at Canby as a pilot project.

TARGET POPULATION: 1980 census found 14,341, below poverty level and an additional 29,009 between poverty and 150% of poverty.

LEVEL OF SERVICE: For '88-'89 it is anticipated that 20,000 persons will be served by all programs.

PROVIDERS OF SERVICE: Social Services Division is the lead agency providing services including contracts with non-profit providers. Division provides training and technical assistance to local individuals and organizations to form self-help organizations. Prepares information and referral catalogue system, as well as information and referral effort at Canby. Employment, Training and Business Services provides weatherization services to eligible homeowners and renters.

REVENUE SOURCES:

Almost entirely grants with 35.5% County general funds.

(See detail for ETBS under Employment Services.)

PERSONNEL/CONTRACTS

15 FTE employees, 100 letters of agreement/memo of understanding, 8 contracts for services, 700 volunteers are involved in all the work of the Division

STRUCTURE: Social Services is a division of the Department of Human Resources. Employment, Training & Business Services, a Division, of the Department of Human Resources, operates the federal Job Training Act for the Private Industry Council of Clackamas County and the Board of County Commissioners. The Department is accountable to the Chief Executive Officer for administrative purposes. John Mullin is director of Social Services, and Del Smith is director of Employment, Training and Business Services.

LOCATION: Social Services is located on Main Street, Oregon City, and four service centers throughout the County. Employment, Training and Business Services is located at Marylhurst College.

CONTACT: John Mullin at 655-8640; Del Smith at 635-1521.

MULTNOMAH COUNTY

SERVICE: Community Services -- Basic and Emergency.

DETAIL: Provides services connected to Community Action programs, including emergency housing, food boxes, clothing, rent assistance, energy assistance, linkage services, self-help and weatherization. Services are delivered through 8 geographically-based service centers throughout the county, 14 agencies which provide services to special needs populations, and a clearinghouse for the emergency housing voucher and rent assistance programs.

TARGET POPULATIONS: Projected '88-'89 low-income population is 70,000.

LEVEL OF SERVICE: For '88-'89 it is anticipated that 15,000 persons will be served by all programs.

PROVIDERS OF SERVICE: The Department of Human Services is now the sole designated CAA within Multnomah County, with countywide governing authority vested in the Board of County Commissioners. MCCA, the previous East County provider, is no longer a county agency, but a nonprofit organization called Human Solutions, Inc. The Department contracts for administrative services with Metropolitan Community Action (formerly Community Action Agency of Portland). MCA in turn subcontracts direct services to Human Solutions and other social service providers.

REVENUE SOURCES ('88-'89):

88%, grant
12%, county general fund

PERSONNEL/CONTRACTS

1 and 1 umbrella contract
(MCA subcontracts with
23 providers)

All administrative support included in the one County staff position and the contracting agency.

STRUCTURE: This program is located in the Director's Office of the Department of Human Services. The Department is accountable to the County Chair for administrative purposes. Duane Zussy is the Director of the Department. Bill Thomas, Manager of the program.

LOCATION: The Department of Human Services is located on S. W. Stark and Metropolitan Community Action is located on S. W. Washington. Service providers are located throughout the county.

CONTACT: Bill Thomas at 248-3782.

PLANNING AND ADMINISTRATIVE SUPPORT

COMMUNITY SERVICES -- BASIC AND EMERGENCY

CLACKAMAS COUNTY

Within the Department of Human Services, where the Social Services Division is located, the Director has a staff of 5.5 FTE which supports the activities of the entire Department, with 100% other funds.

CORRECTIONS

DETENTION

FACILITIES
INTENSIVE SUPERVISION
ELECTRONIC SUPERVISION

COMMUNITY CORRECTIONS

RECOG/INTAKE
PRE-TRIAL SUPERVISION
PRE-SENTENCE INVESTIGATIONS
ALTERNATIVE COMMUNITY SERVICE
COUNSELLING AND TREATMENT
PROBATION AND PAROLE

COUNTY PROVIDERS

MULTNOMAH COUNTY

DEPARTMENT OF JUSTICE SERVICES

DIRECTOR'S OFFICE

SHERIFF*

COMMUNITY CORRECTIONS

PROBATION

DEPARTMENT OF HUMAN SERVICES

STATE OF OREGON, DEPARTMENT
OF CORRECTIONS

CONTRACTORS

CLACKAMAS COUNTY

DEPARTMENT OF HUMAN SERVICES

COMMUNITY CORRECTIONS

SHERIFF*

CONTRACTORS

EXISTING JOINT ACTIVITIES

*Elected Officials

CLACKAMAS COUNTY

SERVICE: Community Corrections

DETAIL: Responsible for adult Corrections programs in the County.

Programs include presentence investigations, probation/parole/temporaryleave supervision, community service, alcohol diversion, evaluations/monitoring, residential program for 34 inmates, an electronic surveillance program for home incarceration, employment counselling and mental health services.

TARGET POPULATION: All adults charged with criminal offenses in the County and subject to detention. All adult county residents on probation and parole.

LEVEL OF SERVICE: Capacity of Residential Center is 34 beds (30 male/4 female), and 40 electronic surveillance units. During 1987, 1,700 clients came under probation and parole supervision; 80 per month presentence investigations were conducted; 4,000 hours per month of community service was conducted; and 1,000 cases were diverted for alcohol treatment.

PROVIDERS OF SERVICE: All services are provided directly by Community Corrections except in the area of mental health which is provided by contracted agencies.

REVENUE SOURCES ('88-'89):

PERSONNEL/CONTRACTS

84% state (CCA)

62.5 FTE and ___ contracts

16% county general funds

STRUCTURE: Community Corrections is a division within the Department of Human Services. The Department is accountable to the Chief Executive Officer for administrative purposes. Terry Gassaway is the Director of Community Corrections.

LOCATION: Community Corrections is located on Main St., Oregon City and the Residential Center is located in Milwaukie.

CONTACT: Ingrid Lewis at 655-8603

MULTNOMAH COUNTY

SERVICE: Community Corrections

DETAIL: Jointly operates programs under the Community Corrections Act with the State of Oregon, Department of Corrections for the supervision, counselling and treatment of adult offenders. Those programs include special residential services for women offenders, alternative community service, probation center, alcohol/drug residential and non-residential treatment, sex offender therapy, pre-trial services, education/job readiness and placement, mental health services, probation and parole, intensive supervision and a management information system. Other programs include recog/intake, pre-trial intensive supervision, drug detoxification, residential community service and a special drug testing project. A separate probation unit for misdemeanants provides counselling and service brokerage and operates an intensive probation supervision project for DUII offenders.

TARGET POPULATION: All adults charged with criminal offenses in the County and subject to detention. All adult county residents on probation and parole.

LEVEL OF SERVICE: For the year 1987, the number of offenders served by various programs totalled: 4,800, alternative community service; 400, intensive county parole supervision; 720, institutional mental health assessment; 30, sex offender therapy; 720, pre-trial, non-custodial release monitoring; 3,000, pre-trial interviewing; 600, pre-trial intensive supervision, 126, residential women's services; 841, residential and non-residential alcohol/drug treatment; 150, drug detox; 310, education/job readiness and placement; 360, residential community service; 30, domestic violence project; 360, 24-hour probation supervision; 1,000 drug testing project; 584, probation center; 1200, county-misdemeanant probation services with, on the average, 720 client contacts per month; and 7,200, state community services.:

PROVIDERS OF SERVICE: Community Corrections Division is lead agency directly providing recog/intake, placement services for alternative community service and residential community service, and monitoring of 15 contracted services. Probation Division provides all services under separate unit for misdemeanor offenders. Sheriff operates probation center at Multnomah County Restitution Center (MCRC) and intensive supervision of inmates on parole. Department of Human Services provides institutional mental health services. Director's office of the Department of Justice Services manages two programs for women offenders: one in-house and one by contract. State of Oregon, Department of Corrections, operates felony parole, probation and temporary leave.

REVENUE SOURCES ('88-'89):PERSONNEL/CONTRACTSCommunity Corrections

80% state/federal
18% county general funds
2% other

30.75 FTE and 15 contracts

Probation

10% state/federal
86% county general funds
4% other

29 FTE and 3 contracts

SheriffProbation Center*

100%, other (CCA)

3 FTE and ___ contracts

Intensive Supervision

100%, other (CCA)

3 FTE and ___ contracts

*Functions as part of MCRC.

Director's OfficeWomen's programs

100% county general funds

2 FTE and 1 contract

Department of Human Services is accounted for under the Mental Health section of this catalogue.

STRUCTURE: The Department of Justice Services is responsible for coordination of all criminal justice activities. Community Corrections and Probation are divisions within the Department of Justice Services. The Department is accountable to the County Chair for administrative purposes. The Sheriff is an independently elected official and responsible for the administration of the Sheriff's Office. Harley Leiber is manager of the Community Corrections Division; Wayne Salvo is manager of the Probations Division; John Angell is Director of Department of Justice Services; and Fred Pearce is the Sheriff.

LOCATION: Department of Justice Services and Community Corrections had administrative offices in the Portland building, with project offices in the County Courthouse. Probation Division has offices in the County Courthouse and at S.E. 17th and Holgate. Sheriff's Corrections Branch is located on 122 and N.E. Glisan, the Probation Center at MCRC on S.W. 11th, and intensive supervision at S.W. Salmon.

CONTACT: John Angell, 248-3701. Department of Justice Services; Harley Leiber at 248-3980, Community Corrections; Wayne Salvo at 248-3810, Probation; and Jim Davis at 255-3600, Sheriff's Office.

CLACKAMAS COUNTY

SERVICE: Detention

DETAIL: Operates single Corrections Facility for Clackamas County holding adult sentenced and unsentenced misdemeanor and felony prisoners and parole and probation violators awaiting revocation hearings. Facility designed to hold 176 at maximum capacity, including 13 beds for women. Provides for transportation of prisoners.

TARGET POPULATION: All adults charged with criminal offenses in the County and subject to detention.

LEVEL OF SERVICE: In 1987, 8,007 inmates were detained. For 1986, there were 8,072 bookings and the average daily population was at capacity. Generally, 70% are awaiting trial and 30% are serving sentences.

PROVIDERS OF SERVICE: Sheriff's Department is responsible for the operation of the jail and provides in-house all laundry and facility/grounds maintenance and jail kitchen. Also directly provides for transportation of prisoners. Religious counselling is provided by volunteer Chaplain Corps. Health care is provided by staff, other County agencies and community physicians.

REVENUE SOURCES ('88-'89):

Sheriff's Dept. is funded 85% by a three year serial levy and 15% from other funds.

PERSONNEL/CONTRACTS

30 FTE Supervisors & Deputy Sheriffs and 11 FTE Support Staff*

*Does not include transportation staff which is shown under Law Enforcement -- Civil Division.

STRUCTURE: The Sheriff is an independently elected official and responsible for the administration of the Sheriff's Department. Bill Brooks is Sheriff.

LOCATION: The Sheriff's Department and the Corrections Facility are located on S. Kaen Road, Oregon City.

CONTACT: Captain Jim McQuay at 655-8331.

MULTNOMAH COUNTY

SERVICE: Corrections -- Detention

DETAIL: Operates five correctional facilities and four non-custodial supervision programs for adult offenders, including pre-trial, pre and post sentenced misdemeanants and felons, and parole and probation violators. Facilities are: Multnomah County Detention Center, capacity of 526; Multnomah County Restitution Center (Probation Center), capacity of 80; Multnomah County Correctional Facility, capacity of 186, Multnomah County Courthouse Jail, capacity of 70 and the Multnomah County Inverness Jail (operational October 1988), capacity of 220. Non-custodial supervision programs include: Close Street for pre-trial defendants; Population Release Monitoring, a matrix program designed to assist in releasing least serious offenders when population approaches the limit of the federal court order; Intensive Supervision, an inmate pass program during the last portion of an inmate's jail sentence and Electronic Supervision, electronic bracelets and verifying units. Provides for transportation of prisoners and court security. Adult education, counselling and referral services are available to inmates. Maintains an automated booking and warrant system.

TARGET POPULATION: All adults charged with a criminal offense and subject to detention. All probation and parole violators who are County residents.

LEVEL OF SERVICE: For the year 1987, there were 25,000 bookings, and the average daily inmate population reached capacity at 862. Another 200, on the average, are under non-custodial supervision.

PROVIDERS OF SERVICE: Sheriff, Corrections Branch, provides all services and operations directly with the exception of contracting for food services and . The Department of Human Services provides all health services for inmates.

REVENUE SOURCES ('88-'89):

1% state/federal
81% county general fund
18% other

PERSONNEL/CONTRACTS

482.07 FTE & ___ contracts

NOTE: Revenue sources includes serial levy for new Inverness jail construction and portion of business income tax dedicated to corrections. All internal administrative support is included above. Department of Human Services is accounted for under the Health Division section of this catalogue.

STRUCTURE: The Sheriff is an independently elected official and is responsible for the administration of the Sheriff's Office. The Department of Justice Services is responsible for coordination of all criminal justice activities. Fred Pearce is Sheriff.

LOCATION: Sheriff's Corrections Branch is located on 122 and N.E. Glisan; detention facilities are located in downtown Portland, Troutdale, and Northeast Portland; and non-custodial supervision operates out of S.W. Salmon.

CONTACT: Jim Davis at 255-3600.

PLANNING AND ADMINISTRATIVE SUPPORT

CORRECTIONS

CLACKAMAS COUNTY

Within the Department of Human Services, where Community Corrections is located, there is a separate administrative section which supports the activities of the entire Department with a staff of 5.5 FTE funded 100% by other funds.

MULTNOMAH COUNTY

The Department of Justice Services which coordinates all criminal justice services has a separate administration section which supports the activities of the entire Department with a staff of 4 funded by county general funds.

COUNTY FAIR

EXPOSITION CENTER
FAIR

COUNTY PROVIDERS

MULTNOMAH COUNTY

DEPARTMENT OF ENV. SERVICES

EXPOSITION CENTER AND
FAIR

CLACKAMAS COUNTY

COUNTY FAIR

EXISTING JOINT ACTIVITIES

MULTNOMAH COUNTY

SERVICE: Exposition Center and County Fair

DETAIL: Operates a year round facility, Multnomah County Exposition Center, that is leased to trade and consumer shows, such as the Boat Show, Sports Show and Home Shows. Yearly produces the County Fair at the Center.

TARGET SERVICE AREA: Metropolitan area -- the counties of Washington, Clark, Clackamas and Multnomah.

LEVEL OF SERVICE: Expo Center has 270,000 sq.ft. buildings on 54 acres. Tenants produce between 60-65 shows yearly at the Center. Gross revenues for 87-88 were \$1,300,000. Attendance at the County Fair runs between 90 and 100,000 for the six days in July.

PROVIDERS OF SERVICE: Expo Center and Fair manages the facility and performs routine maintenance as well as produces the Fair. Other services connected with promotion and bookking of the Far are contracted out. Food and parking lot services are run by concessionaires.

REVENUE SOURCES ('88-'89):

Supported primarily by other funds
(fees/leases/state racing funds)

PERSONNEL/CONTRACTS

9 FTE, permanent staff
and _____ contracts. During Fair up
to 30-40 in staff.

Administrative support is included above.

STRUCTURE: Fair Board is the Board of County Commissioners as mandated by state statute. Expo Center and Fair is a Division of the Department of Environmental Services. The Department is accountable to the County Chair for administrative purposes. Sam Philip is Manager of the Expo Center and Fair.

LOCATION: The Center is located on N. Marine Drive in Portland.

CONTACT: Sam Philip at 285-7756.

CLACKAMAS COUNTY

COUNTY FAIR

COUNTY FOREST

MANAGEMENTS
YIELD
REFORESTATION

COUNTY PROVIDERS

MULTNOMAH COUNTY

CLACKAMAS COUNTY

DEPARTMENT OF TRANSPORTATION AND
DEVELOPMENT

OPERATIONS
COUNTY FOREST

CONTRACTORS

CLACKAMAS COUNTY

SERVICE: County Forest

DETAIL: Manages county-owned forest land on a sustained yield basis, encouraging multiple uses.

TARGET SERVICE AREA: County owns approximately 4,000 acres of forest land.

LEVEL OF SERVICE: For the fiscal period '87-'88, the forest yielded 1,685 million board feet. Timber sale revenue for same period was \$266,000.

PROVIDERS OF SERVICE: Operations contracts out road construction, reforestation and timber harvest.

REVENUE SOURCES ('88-'89):

PERSONNEL/CONTRACTS

Totally self-sustaining.

1.25 FTE

STRUCTURE: Operations is a Division of the Department of Transportation and Development. The Department is accountable to the Chief Executive Officer for administrative purposes. Richard Dopp is Director of Transportation.

LOCATION: Operations is located on Abernethy Road in Oregon City.

CONTACT: Richard Dopp at 655-8521.

COUNTY LAW LIBRARY

COUNTY PROVIDERS

MULTNOMAH COUNTY

Provides space in County Courthouse. Librarian is not County employee and reports to local Bar Association.

CLACKAMAS COUNTY

Provides space in County Courthouse. Librarian is County employee and reports to local Bar Association. County acts as pass through agency for funding library.

COUNTY SERVICE DISTRICTS AND LOCAL IMPROVEMENT PROJECTS

SEWAGE TREATMENT AND DISPOSAL
STREET LIGHTING
STREETS

COUNTY PROVIDERS

MULTNOMAH COUNTY

DEPARTMENT OF ENVIRONMENTAL SERV.

TRANSPORTATION

CLACKAMAS COUNTY

DEPARTMENT OF UTILITIES

EXISTING JOINT ACTIVITIES

CLACKAMAS COUNTY

SERVICE: County Service Districts and Local Improvement Projects

DETAIL: Operates two county service districts providing sewage disposal and treatment, and administers a street lighting district. Provides management assistance to form districts for infrastructure purposes, such as roads and sewers.

TARGET SERVICE AREA: All of the county that needs the services of a county service district.

LEVEL OF SERVICE: County Service District 1 is a sewage disposal system providing collection and treatment for the North Clackamas, Hoodland, Fischer's Forest Park and Boring Service Areas. Operates regional Kellogg Treatment plant with smaller service areas using a variety of treatment facilities. Tri-City Services District links the cities of West Linn, Oregon City and Gladstone to regional treatment plant. Street lighting district is for 7,000 lots.

PROVIDERS OF SERVICE: Department of Utilities provides all management services directly and some engineering, construction and maintenance work. Department contracts for design engineering and construction on major projects.

REVENUE SOURCES ('88-'89):

PERSONNEL/CONTRACTS

Totally supported by the districts and fee-for-services within the County.

53 FTE

STRUCTURE: The Department of Utilities is accountable to the Chief Executive Officer for administrative purposes. David Abraham is the Director.

LOCATION: Utilities is located on Abernethy Road in Oregon City.

CONTACT: David Abraham at 655-3323.

MULTNOMAH COUNTY

SERVICE: County Special Districts and Local Improvement Projects

DETAIL: Responsible for three county service districts. Provides technical assistance to street petitioners in forming local improvement districts for road improvements.

TARGET SERVICE AREA: Unincorporated areas of the County.

LEVEL OF SERVICE: Two districts that provide for sewage disposal are the Central Services District covering _____ miles and the Dunthorpe District covering _____ miles. Another district for street lighting called Mid-County District, and covers _____ lots.

PROVIDERS OF SERVICE: Transportation administers the street lighting district and provides assistance for road development projects. The County contracts with City of Portland to administer the two sewage disposal districts.

REVENUE SOURCES ('88-'89):

PERSONNEL/CONTRACTS

Special assessments and service fees.

Included in Transportation detail

STRUCTURE: Transportation is a Division of the Department of Environmental Services. The Department is accountable to the County Chair for administrative purposes. Larry Nicholas is the County Engineer and Director of the Department.

LOCATION: Transportation is located in the John Yeon Shops, Vance Center, on S.E. 190th in Gresham.

CONTACT: Larry Nicholas at 248-5050.

DISTRICT ATTORNEY

CRIMINAL INVESTIGATION/PROSECUTION
SUPPORT ENFORCEMENT
JUVENILE DELINQUENCY AND DEPENDENCY
CIVIL COMMITMENTS
DOMESTIC VIOLENCE
VICTIMS' ASSISTANCE

COUNTY PROVIDERS

MULTNOMAH COUNTY

DEPARTMENT OF JUSTICE SERVICES

DISTRICT ATTORNEY*

CLACKAMAS COUNTY

DISTRICT ATTORNEY*

EXISTING JOINT ACTIVITIES

REGIONAL ORGANIZED CRIME NARCOTICS TASK FORCE

REGIONAL DRUG INITIATIVE TASK FORCE

EXCHANGE INFORMATION, CASES AND TRAINING

*Elected Officials

CLACKAMAS COUNTY

SERVICE: District Attorney

DETAIL: Responsible for investigation and prosecution of all criminal and civil matters as established by state law in the county, including all crimes, support enforcements, juvenile matters, domestic violence and civil commitments. Operates the Victims Assistance program consisting of advocacy and restitution. Cooperates on a regional basis with other law enforcement agencies and the public to solve crime-related problems.

TARGET POPULATION: All residents of the county; population for 1986 reached 248,200. Crimes against persons reported for the same year were 3,256.

LEVEL OF SERVICE: For the period 88 - 89, it is anticipated that 4,000 clients will be served in the Victims Assistance Program with the support of 40,000 volunteer hours; 2,250 support enforcement clients will receive \$3,200,000; criminal caseload will reach 5,300; and 123 commitments will be made.

PROVIDERS OF SERVICE: The District Attorney's Office provides all services directly. The Office participates in two regional projects that include Multnomah County: Regional Organized Crime Task Force and the Regional Drug Initiative Task Force.

REVENUE SOURCES ('88-'89):

_____ % state/federal
_____ % county general funds
_____ % other

PERSONNEL/CONTRACTS

44 FTE and 35 volunteer advocates
in Victim Assistance Program.

Administrative support is included above.

STRUCTURE: The District Attorney is an independently elected official and responsible for the administration of the District Attorney's Office. Jim O'Leary is the District Attorney.

LOCATION: The District Attorney's Office is located in the County Courthouse on Main St., Oregon City.

CONTACT: Jim O'Leary at 655-8431.

MULTNOMAH COUNTY

SERVICE: District Attorney

DETAIL: Responsible for investigation and prosecution of all criminal and civil matters as established by state law and local ordinance in the county, including all crimes, support enforcements, juvenile dependency and delinquency, domestic violence and civil commitments. Operates the Victim's Assistance program including crisis intervention for rape victims, and investigation of victim's financial loss for purposes of restitution. Cooperates on a regional basis with other law enforcement agencies and the public to solve crime-related problems. Manages an automated case tracking system.

TARGET POPULATION: All residents of the county; population for 1986 reached 565,000. Crimes against persons reported for the same year were 18,706.

LEVEL OF SERVICE: For 1988, it is anticipated that: 3,358 juvenile matters will be adjudicated; \$7,349,148 will be collected for 6,000 support enforcement clients; between 700-900 civil commitments will be made; 3,182 domestic violence cases will be prosecuted; 32,172 criminal complaints reviewed and 21,950 issued; and \$523,904 will be restored to 14,122 victims of crime.

PROVIDERS OF SERVICE: The District Attorney's Office provides all services directly. The Office participates in two regional projects that includes Clackamas County: Regional Organized Crime Task Force and the Regional Drug Initiative Task Force.

REVENUE SOURCES ('88-'89):

28% state/federal
64% county general funds
8% other

PERSONNEL/CONTRACTS

170.20 FTE
as well as 45 volunteers
in the Victims Assistance
Program.

Administrative support is included above.

STRUCTURE: The District Attorney is an independently elected official and responsible for the administration of the District Attorney's Office. The Department of Justice Services is responsible for the coordination of all criminal justice activities undertaken by the County. Mike Schrunk is the District Attorney.

LOCATION: The District Attorney's Office is located in the County Courthouse on S.W. Fourth Ave., in Portland, with space at six other locations throughout the county.

CONTACT: Judy Phelan at 248 -3335.

PLANNING AND ADMINISTRATIVE SUPPORT

DISTRICT ATTORNEY

CLACKAMAS COUNTY

All administrative support is included in the service detail.

MULTNOMAH COUNTY

The Department of Justice Services which coordinates all criminal justice services has a separate administration section which supports the activities of the entire Department with a staff of 4 funded by county general funds.

ECONOMIC DEVELOPMENT

PLANNING
MARKETING
URBAN RENEWAL
BUSINESS ASSISTANCE

COUNTY PROVIDERS

MULTNOMAH COUNTY

COUNTY CHAIR*

INTERGOVERNMENTAL
RELATIONS OFFICER

Responsibility for economic
development rests primarily
with the cities.

CLACKAMAS COUNTY

DEPARTMENT OF TRANSPORTATION
AND DEVELOPMENT

PLANNING AND ECONOMIC
DEVELOPMENT

CONTRACTORS

JOINT EXISTING ACTIVITIES

OREGON TOURISM ALLIANCE
(STATE REGIONAL STRATEGIES PROGRAM)

*Elected Officials

CLACKAMAS COUNTY

SERVICE: Economic Development

DETAIL: Provides full range of services connected with maintaining and improving the business climate of the County that includes identifying and prioritizing economic development goals through its Economic Development Plan; developing the portions of the comprehensive land use plan that affect economic growth; providing financial and other assistance to business; maintaining demographic data and industrial and commercial land site availability; and developing market data for production of marketing materials. Manages two Urban Renewal districts: Clackamas Town Center and Clackamas Industrial Area. Also markets these services to the cities.

TARGET SERVICE AREA: Tourism strategy, marketing and planning are provided county-wide. Other services are provided in the unincorporated areas of the County and by contract with the cities.

LEVEL OF SERVICE: For the fiscal period '88-'89, it is anticipated that 200 businesses and public entities will receive financial and technical assistance. For the Urban Renewal districts, it is expected that jobs created will reach 1,450.

PROVIDERS OF SERVICE: Planning and Economic Development generally provides all services directly. Participates with other jurisdictions in the region, including Multnomah County, to develop the Oregon Tourism Alliance, a response to the State Regional Strategies program.

REVENUE SOURCES ('88-'89):

PERSONNEL/CONTRACTS

58% county general fund
42% other

11 FTE and 2 contracts

STRUCTURE: Planning and Economic Development is a Division of the Department of Transportation and Development. The Department is accountable to the Chief Executive Officer for administrative purposes. Winston Kurth is the Executive Director of the Department. Tom VanderZanden is the Director of the Division.

LOCATION: Planning and Economic Development is located on Abernethy Road in Oregon City.

CONTACT: Tom VanderZanden at 655-8521.

MULTNOMAH COUNTY

SERVICE: Economic Development

DETAIL: Provides staff support to Oregon Tourism Alliance and assists the County's efforts to locate an interpretive facility and otherwise promote economic development in the Columbia Gorge National Scenic Area as consistent with the terms of the federal act. Coordinates County's business recruitment efforts with cities and State of Oregon.

TARGET SERVICE AREA: Represents the interests of the unincorporated area of the County and supports the activities of cities in the County.

LEVEL OF SERVICE: Consumes 20% of staff time on this activity.

PROVIDERS OF SERVICE: The Intergovernmental Relations Office is responsible for coordinating the staff support. In this role, the County participates with other jurisdictions, including Clackamas County, in the Oregon Tourism Alliance.

REVENUE SOURCES ('88-'89):

PERSONNEL/CONTRACTS

Entirely county general fund supported.

1 FTE

STRUCTURE: The Intergovernmental Relations Office is attached to the Office of the County Chair. Fred Neal is the Officer.

LOCATION: The Office is located in the County Courthouse in Portland.

CONTACT: Fred Neal at 248-3308.

PLANNING AND ADMINISTRATIVE SUPPORT

ECONOMIC DEVELOPMENT

CLACKAMAS COUNTY

Within the Planning and Economic Development Division, there is a separate administrative section supporting the activities of the entire Division with a staff of 3 FTE and funded primarily by county general funds.

Within the Department of Transportation and Development, where Planning and Economic Development is located, there are 10 support staff providing general overhead support for the entire Department, funded by the road fund.

EMPLOYMENT SERVICES AND JOB TRAINING

TRAINING
EDUCATION
JOB RECRUITMENT
JOB PLACEMENT

COUNTY PROVIDERS

MULTNOMAH COUNTY

THE PRIVATE INDUSTRY
COUNCIL IS THE RECIPIENT
FOR WASHINGTON COUNTY,
MULTNOMAH COUNTY, AND
THE CITY OF PORTLAND

CLACKAMAS COUNTY

DEPARTMENT OF HUMAN SERVICES
EMPLOYMENT, TRAINING, &
BUSINESS SERVICES

CONTRACTORS

EXISTING JOINT ACTIVITIES

EMPLOYMENT SERVICES

CLACKAMAS COUNTY

SERVICE: Employment Services and Job Training.

DETAIL: Provide training, basic and vocational education, career counselling, on the job training, employment and support services for those eligible under the federal Job Training Act. Provides business retention services for County as part of job recruitment.

TARGET POPULATION: Projected for 1988-89, low income population will equal 25, 108 according to State Employment Division.

LEVEL OF SERVICE: In 1987, served 1,000 youths and adults, 350 in summer youth program, 40 older workers, another 60 dislocated workers and 500 AFS recipients.

PROVIDERS OF SERVICE: Employment, Training and Business Services is the lead agency providing direct counselling and training, as well as jointly operates programs of education and training with Clackamas Community College, Portland Community College, business schools and the State Employment Division; and by formal agreement with the Private Industry Councils of Yamhill, Clark Counties and The Private Industry Council to coordinate job development and placement activities.

REVENUE SOURCES ('88-'89):

Federal grant monies, except for 2% county general fund for Business Retention Services and 20% AFS contract for 'new jobs' program.

PERSONNEL/CONTRACTS

Staff of 33 FTE, two of which are temporary summer hires and 5 partnerships

STRUCTURE: Employment, Training and Business Services, a division of the Department of Human Services, operates the Federal Job Training Partnership Act for the Private Industry Council of Clackamas County and the Board of County Commissioners. Del Smith is the Director.

LOCATION: Employment, Training and Business Services is located at Marylhurst College.

CONTACT: Del Smith at 635-1521.

ELECTIONS

VOTER REGISTRATION
BALLOT PREPARATION
VOTER EDUCATION
ELECTIONS

COUNTY PROVIDERS

MULTNOMAH COUNTY

DEPARTMENT OF GENERAL SERVICES
ELECTIONS

CLACKAMAS COUNTY

COUNTY CLERK*

EXISTING JOINT ACTIVITIES

VOTER REGISTRATION AND
GET OUT THE VOTE

*Elected Official

CLACKAMAS COUNTY

SERVICE: Elections

DETAIL: Conduct elections on six dates for federal, state and county governments, 16 cities including 5 joint cities, 47 school districts, 25 water districts, 21 fire districts, 5 other service districts and METRO in accordance with state law. Registers voters, provides for absentee voting, and other functions as described by state law. Official filing place for all district elections whose administrative offices are located in the County. Provides precinct map of County and voter lists. Uses punch card voting system with ballot questions listed on separate sheets. Participating with Washington, Clark and Multnomah Counties in registration and get-out-the-vote publicity on grocery bags. In the process of identifying polling places for handicap access.

TARGET POPULATION: There are 140,585 registered voters in the County and 163 precincts.

LEVEL OF SERVICE: Estimate that close to 450,000 electors are served annually during the course of holding elections for approximately 115 different taxing and electing jurisdictions.

PROVIDERS OF SERVICE: County Clerk provides all services directly. Data processing is provided by the County's Data Center.

REVENUE SOURCES ('88-'89):

59% county general fund
41% other (reimbursements & fees)

PERSONNEL/CONTRACTS

6 FTE

Administration is included above.

STRUCTURE: County Clerk is an independently elected official and responsible for the administration of the Clerk's Office.

LOCATION: Elections Office is located in Gladstone; data processing of election results is performed at the County's Data Center located on Warne-Milne Road in Oregon City; and the County Clerk's Office is located in the County Courthouse on Main Street in Oregon City. John Kauffman is County Clerk.

CONTACT: John Kauffman at 655-8551.

MULTNOMAH COUNTY

SERVICE: Elections

DETAIL: Conduct elections on six dates for federal, state and county governments, 8 cities, including 3 joint cities, 2 community colleges, 4 education service districts, 9 fire districts, 1 road district, 15 school districts, 16 water districts, Unified Sewage District, other service districts and METRO in accordance with state law. Registers voters, provides for absentee voting, and other functions as described in state law. Official filing place for all district elections whose administrative offices are located in the County. Provides precinct maps by house districts and voter lists. Ballots are printed with complete ballot questions on each ballot. Promotes voter education through staffing of registration tables at 21 locations in the County, and by providing /00 locations where registration forms can be found. Participating with Clackamas, Clark and Washington Counties in registration and get-out-the-vote publicity on grocery bags.

TARGET POPULATION: There are 305,000 registered voters in the County and 459 precincts.

LEVEL OF SERVICE: For the fiscal period 87-88 it was anticipated that six elections would be conducted involving more than 1,021,000 registered voters.

PROVIDERS OF SERVICE: Elections provides all services directly including in-house data processing and election results and houses and stores all elections information, both archival and current. Contracts out for printing of ballots and _____.

REVENUE SOURCES ('88-'89):

63% county general fund
37% other (reimbursements & fees)

PERSONNEL/CONTRACTS

17 FTE, permanent, and _____
contracts

Administration within Division is included above.

STRUCTURE: Elections is a Division of the Department of General Services. The Department is accountable to the County Chair for administrative purposes. Vicki Ervin is Manager of Elections.

LOCATION: Elections is located on S.E. Morrison in Portland with 13 regional centers throughout the County for collecting ballots during elections.

CONTACT: Vicki Ervin at 248-3720.

PLANNING AND ADMINISTRATIVE SUPPORT

ELECTIONS

CLACKAMAS COUNTY

Administrative support is shown on detail.

MULTNOMAH COUNTY

Within the Department of General Services, where Elections are located, there is a separate administrative section in the Director's Office which supports the activities of the entire Department with 3 FTE staff funded by county general funds.

FAMILY SERVICES

COUNSELLING
MEDIATION
INVESTIGATION & STUDIES
ARBITRATION

COUNTY PROVIDERS

MULTNOMAH COUNTY

DEPARTMENT OF JUSTICE SERVICES

FAMILY SERVICES

CLACKAMAS COUNTY

FAMILY COURT SERVICES

CONTRACTORS

CLACKAMAS COUNTY

SERVICE: Family Court Services

DETAIL: Provides voluntary marriage counseling and family and divorce mediation, including financial issues, for residents of Clackamas County. Operating a pilot arbitration project limited to child custody and visitation rights. Provides family counselling training.

TARGET POPULATION: All married residents of the County and their children.

LEVEL OF SERVICE: On the average, see 300 families in a year. There are six judges on the circuit court for the County.

PROVIDERS OF SERVICE: Family Court Services generally provides all services directly, relying on part-time staff and interns in training. Contracts with project coordinator for arbitration project and another counsellor.

REVENUE SOURCES ('88-'89):

19% county general funds and
81% other funds.

PERSONNEL/CONTRACTS

2 FTE, 4 part-time, 2
contractors, 4 slots for interns.

Administrative support is included above.

STRUCTURE: Family Court Services is accountable to the Chief Executive Officer for administrative purposes. Nolan Jones is the Director of the Family Court Services.

LOCATION: Family Court Services is located on Main Street, Oregon City.

CONTACT: Nolan Jones at 655-8415.

MULTNOMAH COUNTY

SERVICE: Family Services

DETAIL: Provides marriage counseling to any County resident requesting service and counseling services to other members of the family. Prepares custody and visitation studies as ordered by the Court. Mediation is mandated in the County when there is a dispute over custody and visitation.

TARGET POPULATION: All married residents of the County and their children.

LEVEL OF SERVICE: For the fiscal period '87/'88, the cumulative case load reached 1,941, with an active caseload for June, 1988 of 201 cases. Approximately 12,000 calls for service were received during the same fiscal period. There are 27 circuit court judges for the County.

PROVIDERS OF SERVICE: Family Services directly provides all services. Occasionally exchanges cases with Washington County.

REVENUE SOURCES ('88-'89):

PERSONNEL/CONTRACTS

Entirely funded by fees.

9.5 FTE

Administrative support is included above.

STRUCTURE: Family Services is a Division of the Department of Justice Services. The Department is accountable to the County Chair for administrative purposes. James Dudley is the Manager of Family Services.

LOCATION: Family Services is located in the County Courthouse in Portland.

CONTACT: James Dudley at 248-3189.

GENERAL SUPPORT SERVICES

PLANNING AND BUDGET
FINANCE
COUNTY COUNSEL
PUBLIC DOCUMENTS
RECORDS MANAGEMENT
FACILITIES AND PROPERTY
MANAGEMENT
MOTOR POOL/EQUIPMENT
MAINTENANCE
TELEPHONE, RADIO AND
ELECTRONIC SERVICES
PURCHASING
INFORMATION SYSTEMS
PRINTING
EMPLOYEE RELATIONS
PERFORMANCE AUDITING
LABOR RELATIONS
PUBLIC AFFAIRS/PUBLIC
INFORMATION
MAILING/DISTRIBUTION

COUNTY PROVIDERS

MULTNOMAH COUNTY

DEPARTMENT OF GENERAL SERVICES

PLANNING & BUDGET
FINANCE
COUNTY COUNSEL
ADMIN. SERVICES
INFORMATION SERVICES
EMPLOYEE RELATIONS
LABOR RELATIONS

CLACKAMAS COUNTY

CHIEF EXECUTIVE OFFICER

FINANCE
TREASURER*
COUNTY CLERK*
COUNTY COUNSEL

*Elected Officials

MULTNOMAH COUNTY

DEPARTMENT OF ENV. SERVICES

FACILITIES & PROPERTY
MANAGEMENT
FLEET MANAGEMENT &
ELECTRONIC SERV.

COUNTY AUDITOR*

COUNTY CHAIR*

INTERGOVERNMENTAL
RELATIONS OFFICER
PUBLIC INFORMATION
OFFICER

CLERK OF THE BOARD

CONTRACTORS

CLACKAMAS COUNTY

CIVIL SERVICE AND
PERSONNEL

DEPARTMENT OF TRANSPORTATION &
DEVELOPMENT

OPERATIONS

GENERAL SERVICES AGENCY

RECORDS MANAGEMENT
DATA PROCESSING
COMMUNICATIONS
PROPERTY MANAGEMENT
BUILDING MAINTENANCE
PUBLIC AFFAIRS OFFICE
MAILING/DISTRIBUTION

CONTRACTORS

JOINT EXISTING ACTIVITIES

*Elected Officials

CLACKAMAS COUNTY

SERVICE: Planning and Budget

DETAIL: Performs short and long range planning; compiles, analyzes and prepares annual budget; assures timely completion of budget process, monitors financial position; and recommends cost control and containment measures. Developing integrated software system for full fund accounting, budget and all other accounting functions of the County.

TARGET SERVICE AREA: Serves all agencies, elected officials and commissions of County government.

LEVEL OF SERVICE: Total budget for the County for fiscal '88-'89 is \$19,562,902 supporting six elected officials, 3-member Board of County Commissioner, three major agencies and various other county offices.

PROVIDERS OF SERVICE: Chief Executive Officer and the Treasurer share these functions.

REVENUE SOURCES ('88-'89):

PERSONNEL/CONTRACTS

Supported entirely by county general funds.

1 FTE in county administration

Administrative support is included above.

STRUCTURE: Chief Executive Officer is responsible for the administration of County government. In 1986, the Treasurer assumed the duties of the Director of Fiscal Management and now holds the position of Chief Financial Officer. The Treasurer as an independently elected official is responsible for the administration of the Treasurer's Office. Mike Swanson is the Chief Executive Officer and Nancy McClain is Treasurer.

LOCATION: Chief Executive Officer is located on Main Street and Fiscal Management is located on Abernethy Road. Both are in Oregon City.

CONTACT: Mike Swanson at 655-8581 and Nancy McClain at 655-8666.

MULTNOMAH COUNTY

SERVICE: Planning and Budget

DETAIL: Performs long range strategic planning and forecasting; compiles, analyzes and prepares annual budget; assures timely completion of budget process; monitors grants; and financial position; recommends cost control and containment measures; and manages automated financial system. (Development of county-wide strategic planning is a new initiative.)

TARGET SERVICE AREA: Serves all departments, elected officials and commissions of County government.

LEVEL OF SERVICE: Total budget for the County for fiscal '88-'89 is \$256,446,286 supporting four major departments, District Attorney and Sheriff, and nondepartmental offices, including five member Board of County Commissioners and Auditor. The first strategic plan will cover a 5 year period beginning fiscal year '90-'91.

PROVIDERS OF SERVICE: Planning and Budget is the only unit which provides these services on a county-wide basis.

REVENUE SOURCES ('88-'89):

PERSONNEL/CONTRACTS

Supported entirely by county general funds.

11 FTE

STRUCTURE: Planning and Budget is a Division of the Department of General Services. The Department is accountable to the County Chair for administrative purposes. Linda Alexander is Director of the Department and Jack Horner is Manager of the Division.

LOCATION: Planning and Budget is located in the Portland Building in Portland.

CONTACT: Jack Horner at 248-3883.

CLACKAMAS COUNTY

SERVICE: Finance

DETAIL: Performs all payroll, accounting, accounts payable functions, and fulfills the duties of Treasurer for the County in accordance with state law. Such duties include annual financial audit and disbursement of funds to taxing districts. Also acts as financial advisor to the Board of County Commissioners and is the Finance Director for the Clackamas County Development Agency. Invests all county funds as well as funds of the Development Agency and, by contract, funds of the special service districts. Developing integrated software system for full fund accounting, budget and all other accounting functions of the County.

TARGET SERVICE AREA: Serves all agencies, elected officials and commissions of County government.

LEVEL OF SERVICE: Payroll accounts for 1,000 employees receiving checks every two weeks, as well as an additional 500 employees receive checks, seasonally, as connected with the Employment, Training and Business Services. Accounts payable processes between _____ checks a year. Average daily balance on investments is \$ _____; and responsible for \$ _____ over a year's spread.

PROVIDERS OF SERVICE: Finance performs all these services for the County, except the annual financial audit which is contracted out.

REVENUE SOURCES ('88-'89):

Supported entirely by county general funds.

PERSONNEL/CONTRACTS

25 FTE and 1 contract.

Administrative support is included above.

STRUCTURE: In 1986, the Treasurer assumed the duties of the Director of Fiscal Management and now holds the position of Chief Financial Officer. The Treasurer as an independently elected official is responsible for the administration of the Treasurer's Office. Nancy McClain is Treasurer.

LOCATION: Finance is located on Abernethy Road in Oregon City.

CONTACT: Nancy McClain at 655-8666.

MULTNOMAH COUNTY

SERVICE: Finance

DETAIL: Performs all payroll, accounting, accounts payable functions and fulfills the duties of Treasurer for the county in accordance with state law. Such duties include annual financial audit, and disbursement of funds to taxing districts. Responsible for investing all county funds.

TARGET SERVICE AREA: Serves all departments, elected officials and commissions of County government.

LEVEL OF SERVICE: Payroll accounts for 2,400 employees for 26 pay periods a year resulting in the issuance of 62,500 payroll checks yearly. Accounts payable processes between 50 - 55,000 checks a year. Average daily balance on investments is \$65,000,000; and responsible for \$1,000,000,000 over a year's spread.

PROVIDERS OF SERVICE: Finance generally performs all services for the County. Annual financial audit, banking services and professional services related to bond issuance are contracted out.

REVENUE SOURCES ('88-'89):

PERSONNEL/CONTRACTS

Entirely supported by county funds.

21 FTE and ____ contracts

STRUCTURE: Finance is a Division of the Department of General Services. The Department is accountable to the County Chair for administrative purposes. Linda Alexander is Director of the Department and David Boyer is Manager of the Division.

LOCATION: Finance is located in the Portland Building in Portland.

CONTACT: David Boyer at 248-3312.

CLACKAMAS COUNTY

SERVICE: County Counsel

DETAIL: Provide legal representation and advice to County elected officials, department heads and several independent authorities in relation to their official duties. Such representation and advice includes right of way condemnations, civil forfeiture, review of contracts and intergovernmental agreements, code, ordinance and resolution drafting, tort/civil rights and workers compensation claims and suits, land use and public health violation prosecutions, and legal representation on any other dispute related to County affairs. Also participates in bargaining, arbitration and grievance procedures. The County is self-insured.

TARGET SERVICE AREA: County government.

LEVEL OF SERVICE: For the fiscal period 88 - 89, it is anticipated that there would be 664 demands for legal advice and written opinion and 328 demands for legal defense and lawsuit prosecution.

PROVIDERS OF SERVICE: County Counsel performs all services directly, except for workers compensation claims which are contracted out to independent attorneys.

REVENUE SOURCES ('88-'89):

Bills county government for services.

PERSONNEL/CONTRACTS

8 FTE plus a part-time work study law clerk.

Administrative support is included above.

STRUCTURE: County Counsel is a separate department and the County Counsel is responsible for the administration of the department. County Counsel is Scott Parker.

LOCATION: County Counsel is located on Main Street in Oregon City.

CONTACT: Scott Parker at 655-8362.

MULTNOMAH COUNTY

SERVICE: County Counsel

DETAIL: Provide legal representation and advice to County elected officials, department heads and other county employees, independent authorities in relation to their official duties. Such representation and advice includes right of way condemnations; review of contracts and intergovernmental agreements; code, ordinance and resolution drafting; tort/civil rights and workers compensation claims and suits; advising on risk management; land use and public health violation prosecutions; and legal representation on any other dispute related to County affairs. Also participates in some employee discipline actions. The County is self-insured.

TARGET POPULATION: County government.

LEVEL OF SERVICE: Generally handles between 200-300 claims a year. In Fiscal 87-88, it was anticipated that in tort litigation 70 cases would be opened and 55 closed.

PROVIDERS OF SERVICE: County Counsel performs all services directly, except for cases where ethical rules require outside counsel or when the technical nature of the case requires outside counsel. Outside claims adjusters assist in claims investigation and disposition.

REVENUE SOURCES ('88-'89):

PERSONNEL/CONTRACTS

Supported entirely by county
general funds.

20 FTE

STRUCTURE: County Counsel is a Division of the Department of General Services. The Department is accountable to the County Chair for administrative purposes. Linda Alexander is Director of the Department and Larry Kressel is County Counsel and Manager of the Division.

LOCATION: County Counsel is located in the Portland Building in Portland.

CONTACT Larry Kressel or Mindy Brown at 248-3138.

CLACKAMAS COUNTY

SERVICE: Public Documents

DETAIL: Maintains the official records of the County, including contracts, ordinances, orders and County Commissioners' Journal.

TARGET SERVICE AREA: County government.

LEVEL OF SERVICE: ----

PROVIDERS OF SERVICE: County Clerk is responsible for maintaining all County public documents.

REVENUE SOURCES ('88-'89):

PERSONNEL/CONTRACTS

Included as part of Recordings and license applications functions.

STRUCTURE: County Clerk is an independently elected official and responsible for the administration of the Clerk's Office. John Kauffman is the County Clerk.

LOCATION: County Clerk is located in the County Courthouse on Main St. in Oregon City.

CONTACT: John Kauffman at 655-8551.

MULTNOMAH COUNTY

SERVICE: Public Documents

DETAIL: Maintains the official records of the County, including contracts, County Commissioners' Journal and the official records of the Board.

TARGET SERVICE AREA: County government.

LEVEL OF SERVICE: ----

PROVIDERS OF SERVICE: This function is shared between Purchasing, which maintains contracts, and the Clerk of the Board, who maintains the County Commissioners' Journal and the official records of the Board.

REVENUE SOURCES ('88-'89):

PERSONNEL/CONTRACTS

Purchasing: all county general funds .9 FTE

Clerk of the Board: all county
general fund supported.

3 FTE (for all activities related
to the Board)

STRUCTURE: Purchasing is a section of Administrative Services. Administrative Services is a Division of the Department of General Services. The Department is accountable to the County Chair for administrative services. The Clerk of the Board works for the Board and is supervised by the County Chair. Lillie Walker is Manager of Purchasing and Jane McGarvin is the Clerk of the Board.

LOCATION: Purchasing is located on S.E. 11th in Portland and the Clerk of the Board is in the County Courthouse on Fourth Ave. in Portland.

CONTACT: Lillie Walker at 248-5111 and Jane McGarvin at 248-3277.

CLACKAMAS COUNTY

SERVICE: Records Management

DETAIL: Provides for archival storage of all county records, including physical record storage and microfilm operations. Also administers a forms management program.

TARGET SERVICE AREA: All County departments and agencies, provides microfilming processing for State of Oregon Local Judicial System for Clackamas County, and Cities of Milwaukie and Oregon City.

LEVEL OF SERVICE: Services 25 County departments and agencies; the state and two cities.

PROVIDERS OF SERVICE: Records Management provides all services directly except some file processing which is contracted out.

REVENUE SOURCES ('88-'89):

PERSONNEL/CONTRACTS

Supported through Enterprise Fund. .5 FTE

Administrative support is included above, except for that provided by the Agency which houses this Department.

STRUCTURE: Records Management is a Department of the General Services Agency. The Agency is accountable to the Chief Executive Officer for administrative purposes. Carole Berggren is Director of the Agency.

LOCATION: Records Management/Microfilming is located on Abernethy Road in Oregon city and Records Storage Facility is located on Washington St. and Kaen Road in Oregon City.

CONTACT: Carole Berggren at 655-8345, or Kris Johnson at 655-8323.

MULTNOMAH COUNTY

SERVICE: Records Management

DETAIL: Provides for archival storage of all county records, including physical record storage, shredding and disposal (recycling), microfilming and blueprinting operations.

TARGET SERVICE AREA: All county departments.

LEVEL OF SERVICE: Currently maintains 11,000 boxes of inactive records and disposes of approximately 800 boxes every six months.

PROVIDERS OF SERVICE: Records Management provides all services directly except pickup and delivery of records, microfilming and blueprinting which is contracted out.

REVENUE SOURCES ('88-'89):

PERSONNEL/CONTRACTS

Entirely county general fund supported.

2 FTE and 5 contracts

STRUCTURE: Records Management is a section of Administrative Services. Administrative Services is a Division of the Department of General Services. The Department is accountable to the County Chair for administrative purposes. Kathy Busse is Manager of Administrative Services.

LOCATION: Records Management is located on S.E. 11th in Portland.

CONTACT: Kathy Busse at 248-5111.

CLACKAMAS COUNTY

SERVICE: Facilities and Property Management

DETAIL: Responsible for acquisition, leasing and maintenance of county-owned or leased buildings, and the management of county-owned property. Property management includes acquisition and disposition of county property, such as tax foreclosed and surplus property. Also responsible for acquisition for roads and utilities. Currently is undertaking a Facilities Study to determine the size and location of a consolidated administrative facility.

TARGET SERVICE AREA: County-owned or leased facilities and county-owned property.

LEVEL OF SERVICE: Maintains over 18 facilities.

PROVIDERS OF SERVICE: Building Maintenance and Facilities Management and Parks share these functions. Building Maintenance and Facilities Management is responsible for county-owned or leased buildings and contracts out for most services including elevator repair, custodial services, and special maintenance. Parks is responsible for tax foreclosure property and right of way acquisition.

REVENUE SOURCES ('88-'89):

PERSONNEL/CONTRACTS

Building Maintenance:
Basically supported through
Enterprise Fund.

3 FTE, 3 contracted services

Facilities Management:
Supported through Enterprise Fund.

2 FTE and approx. 40 contracts
yearly

Parks:

Administrative support is included above, except for that provided by the Agency which houses these Departments.

STRUCTURE: Building Maintenance and Facilities Management are Departments of the General Services Agency. Parks is a section of the Operations Division of the Department of Transportation and Development. The Agency and the Department are accountable to the Chief Executive Officer for administrative purposes. Carole Berggren is Director of the Agency and Dan Zinzer manages Parks.

LOCATION: Building Maintenance is located on 8th Street and Facilities Management is located on Main Street, and Parks is located on Abernethy Road, all in Oregon City.

CONTACT: Carole Berggren at 655-8345, and Dan Zinzer at 655-8521.

MULTNOMAH COUNTY

SERVICE: Facilities and Property Management

DETAIL: Responsible for maintenance and capital improvement of county-owned and leased buildings, and the management of county-owned property. Property Management includes acquisition and disposition of county property such as acquired through tax foreclosures or becomes surplus property. Provides for centralized tracking and payment of all utility costs connected with county facilities. The Capital Improvement Program funds construction and repair projects.

TARGET SERVICE AREA: County-owned property, and county-owned or leased facilities.

LEVEL OF SERVICE: Currently, the county provides different levels of maintenance to 60 buildings including the management of 19 leased and/or rented spaces for County use, 12 County-owned buildings leased to outside agencies or companies. Utility tracking covers 30 property sites.

PROVIDERS OF SERVICE: Facilities Management performs engineering, project management, mechanical, electrical, carpentry, and certain other work for building maintenance and property management activities. Manages a variety of contractual services including, custodial services, carpet, drapery, painting, landscaping, elevator repair, asbestos abatement and indoor air quality programs.

The Justice Center is a condominium agreement among the State, City of Portland, and the County, with the County acting as managing agent. Custodial services at the Center are County employees.

REVENUE SOURCES ('88-'89):

47% county general funds
53% other funds

PERSONNEL/CONTRACTS

51.86 FTE and approx.
55 contracts

Administrative support is included above, except for that provided by the Department which houses this Division.

STRUCTURE: Facilities Management is a Division of the Department of Environmental Services. The Department is accountable to the County Chair for administrative purposes. Paul Yarborough is Director of the Department and F. Wayne George is Manager of the Division.

LOCATION: Facilities Management is located on S.E. 11th in Portland.

CONTACT: F. Wayne George at 248-3322.

CLACKAMAS COUNTY

SERVICE: Motor Pool/Equipment Maintenance

DETAIL: Maintains all county-owned vehicles and equipment in working condition, and provides transportation capability to county agencies and certain other public agencies. Provides a "full service shop" for other public jurisdictions within the County.

TARGET SERVICE AREA: All County agencies, elected officials and independent authorities, and, currently, includes approximately 13 other jurisdictions in the County.

LEVEL OF SERVICE: Estimate that for the fiscal period 88-89, 85% of fleet will be in maximum utilization. Currently a total of 39 agencies, both county and non-county, are provided full service maintenance.

PROVIDERS OF SERVICE: Motor Pool and Equipment Maintenance provide all services directly, except major body repair and engine rebuilds which are contracted out.

REVENUE SOURCES ('88-'89):

PERSONNEL/CONTRACTS

Motor Pool: Entirely reimbursed
by user agencies.

1 FTE

Equipment Maintenance:

21 FTE

Administrative support is included above, except for that provided by the Division.

STRUCTURE: Motor Pool and Equipment Maintenance are sections of Operations. Operations is a Division of the Department of Transportation and Development. Richard Dopp is Director of Operations. Raymond Gitt manages both sections.

LOCATION: Motor Pool and Equipment Maintenance are located on Abernethy Road in Oregon City.

CONTACT: Richard Dopp at 655-8521.

MULTNOMAH COUNTY

SERVICE: Motor Pool/Equipment Maintenance

DETAIL: Maintains all county-owned vehicles and equipment in working condition. Purchases all vehicles and provides fuel for county equipment. Also operates a circulating motor pool and a parking lot in downtown Portland. All users store own vehicles.

TARGET SERVICE AREA: All County departments, elected officials and independent commissions, and, by contract, provides maintenance and "body shop" work to other jurisdictions.

LEVEL OF SERVICE: Circulating pool is for between 20 and 130 parking spaces. As of September, 1988 county owned and maintained 808 pieces of equipment: 463 transportation vehicles; 206 heavy and light equipment; 120 power tools; and 19 trailers.

PROVIDERS OF SERVICE: Fleet and Electronic Services directly provides specialized maintenance and management of the County fleet. Contracts out for auto transmission work, car upholstery, alignment and some tire repairs.

REVENUE SOURCES ('88-'89):

PERSONNEL/CONTRACTS

Entirely reimbursed by user departments.

26 FTE and 4 contracts

STRUCTURE: Fleet and Electronic Services is a Division of the Department of Environmental Services. The Department is accountable to the County Chair for administrative purposes. Paul Yarborough is Director of the Department. Tom Guiney is Manager of the Division.

LOCATION: Fleet and Electronic Services maintenance is located at the John Yeon Shops, Vance Center, on S.E. 190th in Gresham. Motor pool and parking lot is located in downtown Portland.

CONTACT: Tom Guiney at 248-5050.

CLACKAMAS COUNTY

SERVICE: Telephone, Radio and Electronic Services.

DETAIL: Maintain telephone and radio systems, including maintenance, repair, installation, planning and technical support.

TARGET SERVICE AREA: Serves any public agency in the County who requests it.

LEVEL OF SERVICE: Serves approximately 30 agencies.

PROVIDERS OF SERVICE: Communications provides all services directly, except for a few unusual projects or repairs which are contracted out.

REVENUE SOURCES ('88-'89):

PERSONNEL/CONTRACTS

Supported through Enterprise Fund.

4 FTE and 1 maintenance contract*

Administrative support is included above, except that which is provided by the Agency which houses this Department.

*For all operations of Communications Department.

STRUCTURE: Communications is a Department of the General Services Agency. The Agency is accountable to the Chief Executive Officer for administrative purposes. Carole Berggren is Director of the Agency.

LOCATION: Communications is located at the county Central Communications Center on Kaen Road in Oregon City.

CONTACT: Carole Berggren at 655-8345, or Dave Graham at 655-8377.

MULTNOMAH COUNTY

SERVICE: Telephone, Radio and Electronic Services

DETAIL: Maintains county-owned telephone network, amplification systems, and all two-way communications' systems, including detention electronics. Provides planning, technical support and installation of all systems. Also, installs and maintains microwave network, including base station.

TARGET SERVICE AREA: Serves all County activities requiring communications and all County-owned or leased facilities and vehicles. Provides contract services to other jurisdictions for radio equipment services.

LEVEL OF SERVICE: Ten PBXs serve 40 buildings connecting 2300 phones. Electronic equipment maintained, as of August, 1988, includes: 931 items of two-way radio equipment; 306 items of microwave equipment; 63 public address systems; 947 items of security electronics; and 180 items of other equipment.

PROVIDERS OF SERVICE: Information Services provides management and technical services for telephone network system and contracts out for _____. Fleet and Electronic Services provides management and technical services for radio and other electronic services.

REVENUE SOURCES ('88-'89):

PERSONNEL/CONTRACTS

Information Services:

Entirely other fund supported

5 FTE and ____ contracts

Fleet & Electronic Services:

78% county general fund

22% other funds

5 FTE and 0 contracts

Administrative support for Fleet & Electronic Services is included above, except for that provided by the Department which houses this Division.

STRUCTURE: Information Services is a Division of the Department of General Services. Fleet & Electronic Services is a Division of the Department of Environmental Services. Both Departments are accountable to the County Chair for administrative purposes. Jim Munz is Manager of Information Services and Tom Guiney is Manager of Fleet and Electronic Services.

LOCATION: Information is located on E. Burnside in Portland and Fleet & Electronic Services is located at the John Yeon Shops, Vance Center, S.E. 190th in Gresham.

CONTACT: Jim Munz at 248-3749 and Tom Guiney at 248-5050.

CLACKAMAS COUNTY

SERVICE: Purchasing

DETAIL: Implementing in the coming fiscal year a centralized system of county-wide purchasing, material inventory, fixed asset inventory systems and surplus property program.

TARGET SERVICE AREA: County government.

LEVEL OF SERVICE: It is anticipated for the fiscal period 88-89 that 19,500 purchase orders will be processed, 150 contracts administered, maintain 1,500 items in stores and property inventory, and another 5,000 in fixed asset inventory.

PROVIDERS OF SERVICE: Purchasing will provide all services directly except inventory which will be contracted out.

REVENUE SOURCES ('88-'89):

PERSONNEL/CONTRACTS

20% county general funds
80% other funds

6 full time and 1
temporary

STRUCTURE: Purchasing is a section of Operations. Operations is a Division of the Department of Transportation and Development. The Department is accountable to the Chief Executive Officer for administrative purposes. Ben Rainbolt manages Purchasing and Richard Dopp is Director of Operations.

LOCATION: Purchasing is located on Abernethy Road in Oregon City.

CONTACT: Richard Dopp at 655-8521.

MULTNOMAH COUNTY

SERVICE: Purchasing

DETAIL: Responsible for centralized purchasing of all goods and services throughout the County. Maintains Central Stores -- Warehouse -- for goods needed. Manages all bidding processes for county purchasing contracts. Administers minority and women business enterprise set aside program.

TARGET SERVICE AREA: County government, as well as joint purchases with other jurisdictions on certain items.

LEVEL OF SERVICE: Annually manages 5,000 bids for contracts, handles a volume of \$80,000,000, of which \$60,000,000 is in personal services contracts. Central Stores manages over 1,000 items.

PROVIDERS OF SERVICE: Purchasing provides all services directly, except _____ which is contracted out.

REVENUE SOURCES ('88-'89):

PERSONNEL/CONTRACTS

96% county general funds
4% other funds

10.1 FTE and ____
contracts

STRUCTURE: Purchasing is a section of Administrative Services. Administrative Services is a Division of the Department of General Services. The Department is accountable to the County Chair for administrative purposes. Lillie Walker is Manager of Purchasing.

LOCATION: Purchasing and Central Stores is located on S.E. 11th in Portland.

CONTACT: Lillie Walker at 248-5111.

CLACKAMAS COUNTY

SERVICE: Information Systems

DETAIL: Provides county-wide data processing services to the County offices and other political jurisdictions as requested. Currently developing electronic mail capability, as well as inter-active capability among all agencies of the County. The Sheriff's system is run by the Sheriff's Office, but the mainframe is maintained at the Central Data Processing Center.

TARGET SERVICE AREA: County government, and, currently, Lake Oswego.

LEVEL OF SERVICE: Goods and service levels are set by users through a steering committee.

PROVIDERS OF SERVICE: Data Processing provides all services directly.

REVENUE SOURCES ('88-'89):

PERSONNEL/CONTRACTS

Supported through Enterprise Fund.

23 FTE

Administrative support is included above except for that provided by the Agency which houses the Department.

STRUCTURE: Data Processing is a Department of the General Services Agency. The Agency is accountable to the Chief Executive Officer for administrative purposes. Vance Morton is Director of the Department and Carole Berggren is Director of the Agency.

LOCATION: Data Processing is located in the Central Data Processing Center on Library Court in Oregon City.

CONTACT: Carole Berggren at 655-8345, or Vance Morton at 655-8525.

MULTNOMAH COUNTY

SERVICE: Information Systems

DETAIL: Maintains data communication network throughout the County that accesses other governmental systems located within the County, in Salem and Washington, D.C. Operates a central computer system for all county agencies, including the Sheriff and District Attorney. (Elections is an exception, providing its own mainframe processing.) Provides technical support in developing new programs and applications for County use.

TARGET SERVICE AREA: County government, and, by contract, with other jurisdictions.

LEVEL OF SERVICE: County-wide information system provides word processing and electronic mail. There are over 700 terminals in the network at 54 facilities covering 465 square miles, as well as 11 different computers supporting the system. In all 86 systems are in use currently.

PROVIDERS OF SERVICE: Information Services provides for all management of the systems and most other services with the exception of actual service and repair of computers and terminals which is contracted out.

REVENUE SOURCES ('88-'89):

PERSONNEL/CONTRACTS

Bills all users for services and products.

52 FTE and ___ contracts

STRUCTURE: Information Services is a Division of the Department of General Services. The Department is accountable to the County Chair for administrative purposes. Jim Munz is Manager of Information Services.

LOCATION: Information Services is located on E. Burnside in Portland.

CONTACT: Jim Munz at 248-3749.

CLACKAMAS COUNTY

SERVICE: Printing

DETAIL: Provides printing, duplicating, and other related services which includes quick printing, quality printing, color printing, litho dark room facilities, striping/platemaking, bindery, computerized photo typesetting and layout. All presses have two color capability.

TARGET SERVICE AREA: County government, including all elections materials and other jurisdictions within the County, such as fire districts, cities and water districts.

LEVEL OF SERVICE: Serves over 75 different county departments and other governments.

PROVIDERS OF SERVICE: Printing provides all services directly.

REVENUE SOURCES ('88-'89):

PERSONNEL/CONTRACTS

Supported by Enterprise Fund.

8 FTE

Administrative support is included above except for that provided by the Agency which houses this Division.

STRUCTURE: Printing is a Department of the General Services Agency. The Agency is accountable to the Chief Executive Officer for administrative purposes. Carole Berggren is Director of the Agency.

LOCATION: Printing is located on Abernethy Road in Oregon City.

CONTACT Carole Berggren at 655-8345, or Walt Steinbrenner at 655-8337.

MULTNOMAH COUNTY

County contracts with the
City of Portland for all
printing services.

CLACKAMAS COUNTY

SERVICE: Employee Relations

DETAIL: Responsible for personnel of the County, including recruitment, selection, classification, orientation, benefits administration, compliance with Affirmative Action goals, and administration of civil service requirements. Also, provides training classes for employees to improve skills, health, and general job performance. Manages all self-insurance liabilities through the Office of Risk Management. Currently engaged in updating the Civil Service Act for the County, including review of salary system, job descriptions and recruitment procedures.

TARGET SERVICE AREA: County government.

LEVEL OF SERVICE: Currently responsible for servicing 1,100 employees; interviewing and evaluating approximately 5,000 job applicants a year; and maintaining 379 separate job descriptions.

PROVIDERS OF SERVICE: Treasurer is responsible for benefits administration and the balance of services is provided by Civil Service and Personnel. All services are provided directly with the exception of some training courses which are contracted out.

REVENUE SOURCES ('88-'89):

PERSONNEL/CONTRACTS

Supported entirely by
county general funds.

19.5 FTE

STRUCTURE: Civil Service and Personnel is accountable to the Chief Executive Officer for administrative purposes. Jerry Justice is the Director of the Department. The Treasurer is an independently elected official and responsible for the administration of the Treasurer's Office. Nancy McClain is the Treasurer.

LOCATION: Civil Service and Personnel is located on Main Street in Oregon City. Treasurer's Office is located on Abernethy Road in Oregon City.

CONTACT: Jerry Justice at 655-8459, Civil Service, and Nancy McClain at 655-8666, Treasurer.

MULTNOMAH COUNTY

SERVICE: Employee Relations

DETAIL: Responsible for personnel of the County, including recruitment, selection, classification, orientation, benefits administration, compliance with Affirmative Action goals, and administration of civil service requirements. Also, provides training classes for employees to improve skills, health and general job performance. Manages all self-insurance liabilities of the County through a section devoted to risk management.

TARGET SERVICE AREA: County government.

LEVEL OF SERVICE: Currently services 2,200 employees, and processes between 9,000 and 10,000 job applications a year.

PROVIDERS OF SERVICE: Employee Services provides all services with the exception of contracting out for training and health classes and claims investigation and processing.

REVENUE SOURCES ('88-'89):

PERSONNEL/CONTRACTS

Supported by county general funds. 14 FTE and ___ contracts.

Administrative support is included above except that which is provided by the Department in which this Division is housed.

STRUCTURE: Employee Services is a Division of Department of General Services. The Department is accountable to the County Chair for administrative purposes. Lloyd Williams is Manager of the Division.

LOCATION: Employee Services is located in the Portland Building in Portland.

CONTACT: Sue Ayers at 248-5015.

MULTNOMAH COUNTY

SERVICE: Performance Auditing

DETAIL: Conducts internal audits of major County activities, functions and programs.

TARGET SERVICE AREA: Serves all departments, elected officials and commissions of County government, and the public at large.

LEVEL OF SERVICE: Conducts four to six internal audits a year.

PROVIDERS OF SERVICE: County Auditor performs all services for the County, with occasional assistance through outside contracts.

REVENUE SOURCES ('88-'89):

PERSONNEL/CONTRACTS

Supported entirely by county general 7 FTE funds.

Administrative support is included above.

STRUCTURE: County Auditor is an independently elected official and responsible for the administration of the Auditor's Office. Jewel Lansing is providing interim management and information services to the County Auditor's Office until the results of the November election are certified by the County Election Division in late November, 1988.

LOCATION: County Auditor's Offices are located in the Portland Building in Portland.

CONTACT: Jewell Lansing at 248-3320.

CLACKAMAS COUNTY

The County does not perform performance audits.

CLACKAMAS COUNTY

SERVICE: Labor Relations

DETAIL: Negotiates and administers County's labor contracts; handles grievances; and represents County in arbitration.

TARGET SERVICE AREA: County government.

LEVEL OF SERVICE: Bargains with 6 unions for 1,076 employees.

PROVIDERS OF SERVICE: This function is shared by the Director of Civil Service and Personnel and County Counsel

REVENUE SOURCES ('88-'89):

Supported by county general funds.

PERSONNEL/CONTRACTS

Included in previous detail.

STRUCTURE: Civil Service and Personnel is accountable to the Chief Executive Officer for administrative purposes. County Counsel is responsible for the administration of the Counsel's Office. Jerry Justice is Director of Public Affairs and Scott Parker is County Counsel.

LOCATION: Civil Service and the County Counsel are located on Main Street in Oregon City.

CONTACT: Jerry Justice at 655-8459.

MULTNOMAH COUNTY

SERVICE: Labor Relations

DETAIL: Negotiates and administers County's labor contracts, handles grievances, and represents County in arbitration. Administers unemployment claims management program.

TARGET SERVICE AREA: County government.

LEVEL OF SERVICE: Bargains with 8 unions and various associations for between 1800 - 1900 employees.

PROVIDERS OF SERVICE: Labor Relations provides all services.

REVENUE SOURCES ('88-'89):

PERSONNEL/CONTRACTS

Supported by county general funds.

4 FTE

STRUCTURE: Labor Relations is a Unit in the Director's Office of the Department of General Services. The Department is accountable to the County Chair for administrative purposes. Ken Upton is Manager of Labor Relations.

LOCATION: Labor Relations is located in the Portland Building in Portland.

CONTACT: Ken Upton at 248-5053.

CLACKAMAS COUNTY

SERVICE: Public Affairs/Public Information

DETAIL: Responsible for intergovernmental affairs, including preparation of legislative agenda for Board approval, advocating on behalf of the County before other governmental bodies and public groups, and coordinating intergovernmental meetings. Manages the citizen involvement program for land use. Coordinates appointments to Boards and Commissions. Provides for public information through media releases and contacts, newsletters and publications. Also provides for employee communications.

TARGET SERVICE AREA: County, its employees, and Community Planning Organizations.

LEVEL OF SERVICE: --

PROVIDERS OF SERVICE: Director of Civil Service and Personnel is responsible for developing legislative agenda and lobbying on behalf of the County. Public Affairs Office provides the rest of the services.

REVENUE SOURCES ('88-'89):

PERSONNEL/CONTRACTS

Supported by county general funds.

1 FTE in Civil Service and Personnel and 1 FTE in Public Affairs Office.

STRUCTURE: Civil Service and Personnel is accountable to the Chief Executive Officer for administrative purposes. Public Affairs Office is a Division of the General Services Agency. The Agency is accountable to the Chief Executive Officer for administrative purposes. Jerry Justice is the Director of Civil Service. Ardis Stevenson is the Director of the Public Affairs Office and Carole Berggren is Director of the Agency.

LOCATION: Both offices are located on Main Street in Oregon City.

CONTACT: Jerry Justice at 655-8459 and Carole Berggren at 655-8345.

MULTNOMAH COUNTY

SERVICE: Public Affairs/Public Information

DETAIL: Responsible for intergovernmental affairs, including preparation of legislative agenda for Board approval, coordinating County response to actions of other governmental bodies and public groups, and participating in intergovernmental meetings. Provides for all external communications, such as speeches, news releases and media contacts emanating from the County Chair's office and Board of County Commissioners, on behalf of the County, as well as coordinating all public information for the County through technical support to individual departments and elected officials.

TARGET SERVICE AREA: County government.

LEVEL OF SERVICE: --

PROVIDERS OF SERVICE: The Intergovernmental Relations Officer is responsible for matters relating to public affairs.

The Public Information Officer is responsible for matters relating to external communications.

REVENUE SOURCES ('88-'89):

PERSONNEL/CONTRACTS

Supported by county general funds.

1 FTE IGR Officer
1 PI Officer

STRUCTURE: Both Officers are located in the County Chair's Office. Fred Neal is the Intergovernmental Relations Officer and Mike Dolan is the Public Information Officer.

LOCATION: The County Chair's Office is located in the County Courthouse in Portland.

CONTACT: Fred Neal and Mike Dolan at 248-3308.

CLACKAMAS COUNTY

SERVICE: Mailing and Distribution

DETAIL: Provides mailing, courier, telephone system, and other distribution services.

TARGET SERVICE AREA: County government.

LEVEL OF SERVICE: 55 County offices, state court system housed in County Courthouse.

PROVIDERS OF SERVICE: Communications provides all services.

REVENUE SOURCES ('88-'89):

PERSONNEL/CONTRACTS

Supported through Enterprise Fund.

4 FTE*

Administrative support is included above except for that which is provided by the Agency housing this section.

*For all operations of Communications.

STRUCTURE: Communications is a department of the General Services Agency. The Agency is accountable to the Chief Executive Officer for administrative purposes. Carole Berggren is Director of the Agency.

LOCATION: This section of Communications is located at _____.

CONTACT: Carole Berggren at 655-8345.

MULTNOMAH COUNTY

County contracts with the
City of Portland for
mailing and distribution
services.

PLANNING AND ADMINISTRATIVE SUPPORT

GENERAL SUPPORT SERVICES

CLACKAMAS COUNTY

Department of Transportation and Development has a separate administrative section of 10 FTE staff which provides general overhead support for the entire Department with funding from the road fund.

Operations, a Division of the Department of Transportation and Development, has a separate administration section with a staff of 16 FTE which supports the activities of the entire Department with funding from the road fund.

General Services Agency has a separate administration section with a staff of 2 FTE which supports the activities of the entire Agency from county general funds.

MULTNOMAH COUNTY

The Director's Office of the Department of General Services has a separate staff of 3 FTE which supports the activities of the entire Department funded from the county general fund. Connected to the Director's Office is an Operations Unit of 9.5 FTE funded by the County general fund which provides word processing support to all the Divisions of the Department that are located on the 14th floor of the Portland Building.

Information Services has a separate administration section with a staff of 7 FTE which supports the activities of the entire Division funded by the county general fund.

Administrative Services has a separate administration section with a staff of 1.5 FTE which supports the activities of the entire Division funded by county general funds.

The Department of Environmental Services has a separate administrative section with a staff of 7.80 FTE providing overall management and policy direction to the entire Department. The section is funded 22% by road fund, 36% county general funds and 42% other funds.

JUVENILE SERVICES

JUVENILE COURT: INTAKE/INVESTIGATION/DETERMINATION
ADJUDICATION
DEPENDENCY/NEGLECT
DELINQUENTS
DETENTION
DIVERSION
RESTITUTION/COMMUNITY SERVICE
PROBATION
STATUS OFFENDERS

YOUTH PROGRAMS: EDUCATION
COUNSELLING
JOB TRAINING/EMPLOYMENT
FOSTER CARE
RESIDENTIAL CARE
EMERGENCY SHELTERS

COUNTY PROVIDERS

MULTNOMAH COUNTY

DEPARTMENT OF HUMAN SERVICES
JUVENILE JUSTICE DIVISION

DEPARTMENT OF HUMAN SERVICES
SOCIAL SERVICES DIVISION
YOUTH PROGRAMS
JUVENILE SERVICES
COMMISSION

CONTRACTORS

CLACKAMAS COUNTY

JUVENILE DEPARTMENT

DEPARTMENT OF HUMAN SERVICES
EMPLOYMENT/TRAINING
& BUSINESS SERVICES

JUVENILE SERVICES COMMISSION

CONTRACTORS

EXISTING JOINT ACTIVITIES

DETENTION
TRI-COUNTY JUVENILE INFORMATION SYSTEM
GIRLS AT RISK ADVOCACY
TRI-COUNTY YOUTH SERVICES CONSORTIUM
EMPLOYMENT SERVICES

CLACKAMAS COUNTY

SERVICE: Juvenile Court

DETAIL: Responsible for intake, investigation and determination as to placement, adjudication, counselling and treatment, detention, restitution, and supervision for children coming under the jurisdiction of the Court because of delinquency, neglect and abuse. Status offenders are treated only as incident to a CSD plan.

TARGET POPULATION: 1987 population of 0-17 years equalled 62,643 and 29,292 for 10-17 years.

LEVEL OF SERVICE: On a yearly basis, process 2,600 to 3,000 referrals; handle, on the average, per year, 485 formal hearings; and supervise about 1,000 youths. Counsellor case load approximates 35-44. Counsellors are assigned to five different locales in the County.

PROVIDERS OF SERVICE: Juvenile Department is the lead agency providing all services directly except the following:

Detention -- by contract with Multnomah County, Donald E. Long Home, for six youths per day.

Specialized treatment -- in part contracted out. Contractors include Clackamas County Mental Health.

Family counselling -- contracted out.

Tri-County Juvenile Information Computer System -- managed by Multnomah County, Information Systems, with data entry and access by terminals in Clackamas and Washington counties.

REVENUE SOURCES ('88-'89):

35% State
and 65% county general fund.

PERSONNEL/CONTRACTS:

11 FTE counsellors, 3 FTE support staff, a psychologist by contract and 8 other contracts

STRUCTURE: Juvenile Department is headed by Donald D. Welsh, Director, and functions as a separate department responsible for its own administration.

LOCATION: The Department is located on South Kaen Road, housing all court and counselors in same facility and rents space to the Juvenile Services Commission.

CONTACT: Donald D. Welch at 655-8342.

MULTNOMAH COUNTY

SERVICE: Juvenile Court

DETAIL: Responsible for intake, investigation and determination as to placement, adjudication, counselling and treatment, detention, restitution, and supervision for children coming under the jurisdiction of the Court because of delinquency, neglect and abuse. Status offenders are treated as a result of repeat offenses or probation violations.

TARGET POPULATION: During 1987 the Court served 9,231 juveniles.

LEVEL OF SERVICE: On a yearly basis, process 16,250 referrals; handle 6,810 formal hearings; and supervise 1,010 youths. Operates the Donald E. Long Home, where 2,850 were detained during 1987. Two field offices are maintained.

PROVIDERS OF SERVICE: Juvenile Justice Division is the lead agency providing all services directly except for the court appointed Special Advocates for children in dependency matters which are contracted through the State.

REVENUE SOURCES ('88-'89):

PERSONNEL/CONTRACTS

Counselling/Intake: County general fund, 2% other fund.

45 FTE and .5 contract

Detention: 71% County general fund, 6% grant, 23% other funds.

27 FTE

STRUCTURE: Juvenile Justice Division, headed by Hal Ogburn, is a division within the Department of Human Resources. The Department is accountable to the County Chair for administrative purposes.

LOCATION: Juvenile Justice is located at N.E. 68th in the Donald E. Long Home with two field offices in North and Northeast Portland.

CONTACT: Cindy Butts 248-3544.

CLACKAMAS COUNTY

SERVICE: Youth Programs -- Counselling and Treatment

DETAIL: Provide foster and residential care including, counselling and treatment for high risk youths, shelter and diversion services for at risk youth; and special programs for teen mothers. Treatment and counselling extends to the family unit. Responsible for coordinating youth services within the County. Supervises the community based Training School Reduction Programs.

TARGET POPULATION: At Risk Youth, those 12 - 17 years, numbered 29,292 in 1987. In 1986, there were 2,010 juvenile arrests, excluding status offenders, and 1,215 neglected and abused children. 0 - 17 population in 1987 numbered 62,643.

LEVEL OF SERVICE: In 198/ 456 clients were served by all programs.

PROVIDERS OF SERVICE: Juvenile Services Commission through funding and monitoring of 10 programs operated by outside agencies, including Boys and Girls Aid Society and Tri-County Youth Services Consortium.

REVENUE SOURCES ('88-'89):

Totally State funded except some facility and administrative support from County.

PERSONNEL/CONTRACTS:

2 FTE and 10 programs

STRUCTURE: Juvenile Services Commission, staffed by Meredith Wood Smith, is a citizen commission appointed by the Board of County Commissioners and functions directly under the Board.

LOCATION: Juvenile Services Commission is located on South Kaen Road, Oregon City, in the Juvenile Court Building.

CONTACT: Meredith Wood Smith at 655-8288.

MULTNOMAH COUNTY

SERVICE: Youth Programs -- Counselling and Treatment

DETAIL: Provide counselling and treatment, foster and residential care for high risk youths, diversion services through education, counselling, recreation, employment referrals for at risk youths, and prevention services for teen parents and children. Treatment and counselling extends to the family unit. Responsible for community program to reduce State institutionalism (Training School Reduction). Six youth centers are located throughout the County and a homeless shelter for runaways and street youth is located in downtown Portland.

TARGET POPULATION: 0 - 19 population in 1987 equalled 150,000.

LEVEL OF SERVICE: In 1987 6,263 clients were served.

PROVIDERS OF SERVICE: Youth Programs Office, a section of the Social Services Division, is the lead agency providing staff to the Juvenile Services Commission and contract administration of 21 contracts with community agencies, including Boys & Girls Aid Society, and Tri-County Youth Services Consortium.

REVENUE SOURCES ('88-'89):

PERSONNEL/CONTRACTS:

53% grant, 47% county general funds. 6 FTE and 21 contracts

STRUCTURE: Social Services is a division within the Department of Human Services. The Department is accountable to the County Chair for administrative purposes. Gary Smith is Director of Social Services.

LOCATION: Youth Programs Office is located on S.W. Stark. Youth Service Centers are located throughout the County.

CONTACT: Michael Morrissey, Youth Programs Office, at 248-3565.

CLACKAMAS COUNTY

SERVICE: Youth Programs -- Job Training

DETAIL: Provide training, basic and vocational education, career counselling, on the job training, and employment and support services for youths eligible under the federal Job Training Act. Offer work experience in Summer Youth Program for low income youth. Youths are referred from Corrections, AFS, Employment Division, schools and CSD.

TARGET POPULATION: 14 - 21 years of age. Projected population for 88-89 is 29,667, of which 4,383 are economically disadvantaged and 953 are school drop outs according to the State of Oregon, Employment Division.

LEVEL OF SERVICE: For 1988, 320 youths will participate in Try-Out Employment, Pre-Employment Skills Training and Youth Competency; 350 in Summer Work Experience; and 90 in Vocational Options Program.

PROVIDERS OF SERVICE: Employment, Training and Business Services is the lead agency providing direct counselling and training. Jointly operates programs of education and training with Clackamas Community College, Portland Community College, business schools and the State Employment Division; and by formal agreement with the Private Industry Councils of Yamhill, Clark Counties and The Private Industry Council to coordinate job development and placement activities.

REVENUE SOURCES ('88-'89):

Funded through Job Training Partnership Act.

PERSONNEL/CONTRACTS:

Entire staff is 33 FTE, two of which are temporary summer hires and 5 partnerships

(Entire staff provides services to adults under the Job Training Act.)

STRUCTURE: Employment, Training and Business Services, a division of the Department of Human Services, operates the Federal Job Training Partnership Act for the Private Industry Council of Clackamas County and the Board of County Commissioners. Del Smith is the Director.

LOCATION: Employment, Training and Business Services is located at Marylhurst College.

CONTACT: Del Smith at 635-1521.

MULTNOMAH COUNTY

SERVICE: Youth Programs -- Job Training

DETAIL: Provide training and job placement services for youths under the jurisdiction of the court. Direct restitution and community service for youth offenders.

TARGET POPULATION: Between 1600 and 2500 youths came under the jurisdiction of the court in 1987.

LEVEL OF SERVICE: In 1987 262 youths were served. Summer project with ODOT and the PIC provides 120 jobs for eight weeks.

PROVIDERS OF SERVICE: Resource and Management section of the Juvenile Justice Division is the lead agency providing all services directly with the exception of Restitution Supervision which is contracted out to Boys and Girls Clubs. The PIC is a partner to the extent of funding services for youths eligible under the federal Job Training Act.

REVENUE SOURCES ('88-'89):

PERSONNEL/CONTRACTS:

48% county general funds, 52% other funds 4.64 FTE and 1 contract

STRUCTURE: Juvenile Justice Division, headed by Hal Ogburn, is a division within the Department of Human Resources. The Department is accountable to the County Chair for administrative purposes.

LOCATION: Juvenile Justice is located at N.E. 68th in the Donald E. Long Home with two field offices in North and Northeast Portland.

CONTACT: Lorenzo Poe, Resource and Management, at 248-2515.

PLANNING AND ADMINISTRATIVE SUPPORT

JUVENILE SERVICES

CLACKAMAS COUNTY:

No additional personnel are shown for administration and planning for the Juvenile Department, Juvenile Services Commission and Employment, Training and Business Services.

MULTNOMAH COUNTY

Within the Juvenile Justice Division, a separate administrative section of 17.5 personnel support the entire division with 99% county general funds.

Within the Social Services Division, where Youth Programs are located, there is a separate administrative section of 10.43 personnel which supports the entire Division with funding split between grants and county general fund monies.

Within the Department of Human Services, where Juvenile Justice and Social Services Divisions are located, there is a separate Director's Office section of 17 personnel which supports the activities of the entire department, with 99% county general funds.

LAND USE PLANNING

APPLICATION REVIEW
DESIGN REVIEW
PERMITS
ZONE CHANGES
LAND DIVISIONS
COMPREHENSIVE PLAN

COUNTY PROVIDERS

MULTNOMAH COUNTY

DEPARTMENT OF ENVIRONMENTAL SERV.

LAND USE PLANNING AND
DEVELOPMENT

CLACKAMAS COUNTY

DEPARTMENT OF TRANSPORTATION
AND DEVELOPMENT

PLANNING AND ECONOMIC
DEVELOPMENT

EXISTING JOINT ACTIVITIES

CLACKAMAS COUNTY

SERVICE: Land Use Planning

DETAIL: Responsible for implementing County's comprehensive land use plan and zoning ordinances through review and determination of land use applications, partitioning and sub-division review and assisting citizen planning involvement. Provides development assistance, design review and administers all licensing and permitting for mining operations and septic tanks. Completes periodic review and updating of the comprehensive land use plan. Provides contract services to Gladstone, Happy Valley and Mollalla.

TARGET SERVICE AREA: The unincorporated area of the County and by contract with cities as requested.

LEVEL OF SERVICE: For the fiscal period 86-87, 800 land use applications were processed and 11,243 customers were served.

PROVIDERS OF SERVICE: Planning and Economic Development provides all services directly except _____.

REVENUE SOURCES ('88-'89):

PERSONNEL/CONTRACTS

_____ % state/federal
58% county general funds
_____ % other

14 FTE and _____ contracts

STRUCTURE: Planning and Economic Development is a Division of the Department of Transportation and Development. The Department is accountable to the Chief Executive Officer for administrative purposes. Winston Kurth is the Executive Director of the Department. Tom VanderZanden is the Director of the Division.

LOCATION: Planning and Economic Development is located on Abernety Road in Oregon City.

CONTACT: Tom Vanderzanden at 655-8231.

MULTNOMAH COUNTY

SERVICE: Land Use Planning

DETAIL: Responsible for implementing County's comprehensive land use plan and zoning ordinances through review and determination of land use applications, partitioning and sub-division review, design review, and assisting citizen planning involvement. Completes period review and updating of County's comprehensive land use plan. Provides contract services for Maywood Park and certain other areas. In general, coordinates with other agencies in its planning program and, specifically, for the Columbia Gorge National Scenic Area.

TARGET SERVICE AREA: The unincorporated area of the County and by contract for certain other areas.

LEVEL OF SERVICE: For the fiscal period 88-89, it is anticipated that 100 land use applications will be processed.

PROVIDERS OF SERVICE: Land Use Planning and Development provide all services directly.

REVENUE SOURCES ('88-'89):

PERSONNEL/CONTRACTS

8% state/federal
88% county general fund
4% other

9.5 FTE

STRUCTURE: Land Use Planning and Development is a Division of the Department of Environmental Services. The Department is accountable to the County Chair for administrative purposes. Paul Yarborough is the Director of the Department. Lorna Stickel is the Manager of the Division.

LOCATION: Land Use Planning and Development is located on S.E. Morrison in Portland.

CONTACT: Lorna Stickel at 248-3043.

PLANNING AND ADMINISTRATIVE SUPPORT

LAND USE PLANNING

CLACKAMAS COUNTY

Within the Planning and Economic Development Division, there is a separate administrative section supporting the activities of the entire Division with a staff of 3 FTE and funded primarily by county general funds.

Within the Department of Transportation and Development, where Planning and Economic Development are located, there are 10 FTE staff providing general overhead support for the entire Department, funded by the road fund.

MULTNOMAH COUNTY

Within the Department of Environmental Services, where Transportation is located, there is a separate administrative section, with a staff of 7.80 FTE providing overall management and policy direction to the entire Department, as well as financial management and operations of various project funds, which is funded 22% by road fund, 36% county general fund and 42% other funds.

LAW ENFORCEMENT

PATROL
INVESTIGATION
RECORDS
CIVIL PROCESS
ORDINANCE ENFORCEMENT
EMERGENCY RESPONSE
COORDINATION
MARINE PATROL
SEARCH & RESCUE
VOLUNTEER FORCES

COUNTY PROVIDERS

MULTNOMAH COUNTY

DEPARTMENT OF JUSTICE SERVICES

SHERIFF*

DEPARTMENT OF ENVIRONMENTAL SERV.

EMERGENCY MANAGEMENT

CLACKAMAS COUNTY

SHERIFF*

JOINT EXISTING ACTIVITIES

SWAT TEAMS AND CANINE UNIT
MUTUAL AID
METROPOLITAN EXPLOSIVE DISPOSAL UNIT
BURGLARY TACTICAL UNIT

*Elected Officials

CLACKAMAS COUNTY

SERVICE: Law Enforcement

DETAIL: Provides police protection to unincorporated areas of the County and full service protection to the cities of Wilsonville and Estacada and limited protection to Rivergrove and Happy Valley. Also provides additional and seasonal patrol to other agencies outside the County. Maintains five (non-staffed) reporting stations throughout the County. Responsible for investigations of crimes against persons and property and alcohol-related serious traffic injuries. Coordinates all search and rescue operations and patrols the waters of the County exclusive of Lake Oswego. Serves all civil process. Enforces County ordinances regarding alarms, abandoned autos, and shares responsibility with County Counsel for enforcement of the forfeiture (assets from illegal activities) ordinance. Coordinates emergency response. Operates unique Special Weapons and Tactics Unit (SWAT) and other programs for dealing with explosives and hazardous material. Manages automated law enforcement support system, a records system with analytical functions, for the Sheriff's Department, each city police department in the County, the District Attorney and Community Corrections. Conducts crime prevention education programs and training classes for professional staff.

TARGET POPULATION: As of 1987, the population within the unincorporated areas of Clackamas County equaled 158,000. Another 7,400 in population is covered by contract with certain incorporated cities. All users of county waterways, exclusive of Lake Oswego.

LEVEL OF SERVICE: During 1987, in excess of 2 million miles were patrolled; 12,267 criminal cases were investigated; 74,060 calls for service were acted upon; total criminal arrests was 9,898, 887 drug investigations were conducted; 1,553 traffic crashes were investigated; 7,855 traffic citations were issued; 32 search and rescue missions were conducted; and the marine unit spent a total of 2,285 patrolling lakes and rivers.

PROVIDERS OF SERVICE: Sheriff's Department provides all services directly with the help of volunteer groups, such as the Sheriff's Posse, Explorers Post 715 and the Sheriff's Reserve. Radio dispatch is provided by the County's Central Communication system which is co-located with the Emergency Operations Center. Only overhead services, such as computer maintenance are contracted out. By agreement with Multnomah County and City of Portland provides SWAT team in exchange for police dogs. Participates in mutual aid program with other law enforcement agencies in the Metropolitan Explosive Disposal Unit. Works with Washington and Multnomah Counties sharing information on Burglary Tactical Unit. Generally provides mutual aid to neighboring jurisdictions.

REVENUE SOURCES ('88-'89):

Sheriff's Dept. is funded 85% by a three year serial levy and 15% from other funds.

PERSONNEL/CONTRACTS

160 Supervisory-Prof. and 44 support staff

**Includes transportation and court security staff. Planning and administration are included above.

STRUCTURE: The Sheriff is an independently elected official and responsible for the administration of the Sheriff's Department. Bill Brooks is the Sheriff.

LOCATION: The Sheriff's Department is located on S. Kaen Road, Oregon City and maintains unstaffed reporting stations at Sandy, Estacada, Oak Lodge, Oak Grove and Wilsonville.

CONTACT: Bill Brooks at 655-8218.

MULTNOMAH COUNTY

SERVICE: Law Enforcement

DETAIL: Provides police protection to unincorporated areas of the County. Responsible for investigation of crimes against persons and property that originate within its jurisdiction, and provides investigation services as requested by the cities. The Motor Carrier Safety Unit enforces PUC truck safety regulations. Operates special narcotics investigations unit that involves Gresham, federal agencies and periodically Portland. Patrols waterways in the County from two offices adjacent to the Columbia River and the Willamette River. Serves all civil process and enforces County alarm ordinance. Conducts crime prevention education programs and training classes for professional staff. Manages an automated police record system. Maintains county-wide emergency management program and provides hazardous spills response jointly with Gresham to all fire departments and certain other regional law enforcement agencies.

TARGET POPULATION: The unincorporated areas of the County, covering a population in 1988 of 70,094, and all users of waterways in the County -- there are over 93 miles of waterways and 200 miles of shoreline in the County.

LEVEL OF SERVICE: During fiscal period 86-87, there were 5,946 criminal offenses; individually, patrol officers, on the average, responded to close to 700 calls; over 2000 boats were inspected for marine violations; 2,594 trucks were inspected; close to 125 arrests were made by special narcotics unit; 25,000 alarm systems were monitored; and 34,604 civil law transactions were processed.

PROVIDERS OF SERVICE: The Sheriff's Office provides patrol, enforcement, investigation and civil process services directly with the help of volunteer groups such as Explorer Posts, Mounted Poses, Aero Squad and Sheriff's Reserves. Radio dispatch is provided through a contract with Portland's Bureau of Emergency Communications. Other contracted services are: . Emergency Management maintains emergency response program and coordinates hazardous materials spill response. By agreement with Clackamas County provides police dogs in exchange for SWAT team. Participates in mutual aid program with other law enforcement agencies in the Metropolitan Explosive Disposal Unit. Works with Clackamas and Washington Counties sharing information on Burglary Tactical Unit. Generally provide mutual aid to neighboring jurisdictions.

REVENUE SOURCES ('88-'89):

PERSONNEL/CONTRACTS

Sheriff

3% state/federal
95% county general fund
2% other

*139 FTE and ___ contracts
(50 deputies in direct
law enforcement)

*Planning, research and general administration are included above; payroll/personnel services and hiring are part of the administrative functions.

Emergency Management

26% state/federal
53% county general fund
21% other

3 FTE and ___ contracts

STRUCTURE: Sheriff is an independently elected official and responsible for the administration of the Sheriff's Office. The Department of Justice Services is responsible for the coordination of all criminal justice activities in the County. Emergency Management is a division of the Department of Environmental Services. The Department is accountable to the County Chair for administrative purposes. Fred Pearce is Sheriff and Penny Malmquist is Director of Emergency Management.

LOCATION: Sheriff's Office is located at 122 and N.E. Glisan as is Emergency Management. River patrol has two offices: one on N.E. Marine Drive and a second at Port of Portland Terminal 4.

CONTACT: Jim Davis at 255-3600, Sheriff's Office; Penny Malmquist at 255-3600, Emergency Management.

PLANNING AND ADMINISTRATIVE SUPPORT

LAW ENFORCEMENT

CLACKAMAS COUNTY

All administrative support is included in the service detail.

MULTNOMAH COUNTY

Within the Department of Environmental Services, where Emergency Management is located, there is a separate section for administration. A staff of 7.80 FTE supports the activities of the entire Department using 22% road fund, 36% county general fund and 42% other monies.

The Department of Justice Services which coordinates all criminal justice services has a separate administration section which supports the activities of the entire Department with a staff of 4 FTE funded by county general funds.

LIBRARIES

COUNTY PROVIDERS

MULTNOMAH COUNTY

CLACKAMAS COUNTY

CONTRACTOR

GENERAL SERVICES AGENCY

EXISTING JOINT ACTIVITIES

COOPERATIVE BOOK LENDING

CLACKAMAS COUNTY

SERVICE: Libraries

DETAIL: Provides traditional library services, including direct loan, reference and reader's advisory through a cooperative network of county and city libraries. Participates with the counties of Washington and Multnomah in a book lending agreement.

TARGET POPULATION: Entire County.

LEVEL OF SERVICE: For the part of the system directly operated by the County there are 23,000 card holders and book borrowing amounts to 405,000 items per year.

PROVIDERS OF SERVICE: General Services Agency administers the Cooperative Library Network of Clackamas County and operates the County Library system with branches at Damascus, Oregon City, Hilltop and Clackamas Town Center. The network consists of the County Library System and the public libraries of ten cities and provides central administration for the automation system, cataloguing and courier service.

REVENUE SOURCES ('88-'89):

Funded by a three year serial levy, and state grant.

PERSONNEL/CONTRACTS

16.73 FTE for operation of County Library System and the administration of the network

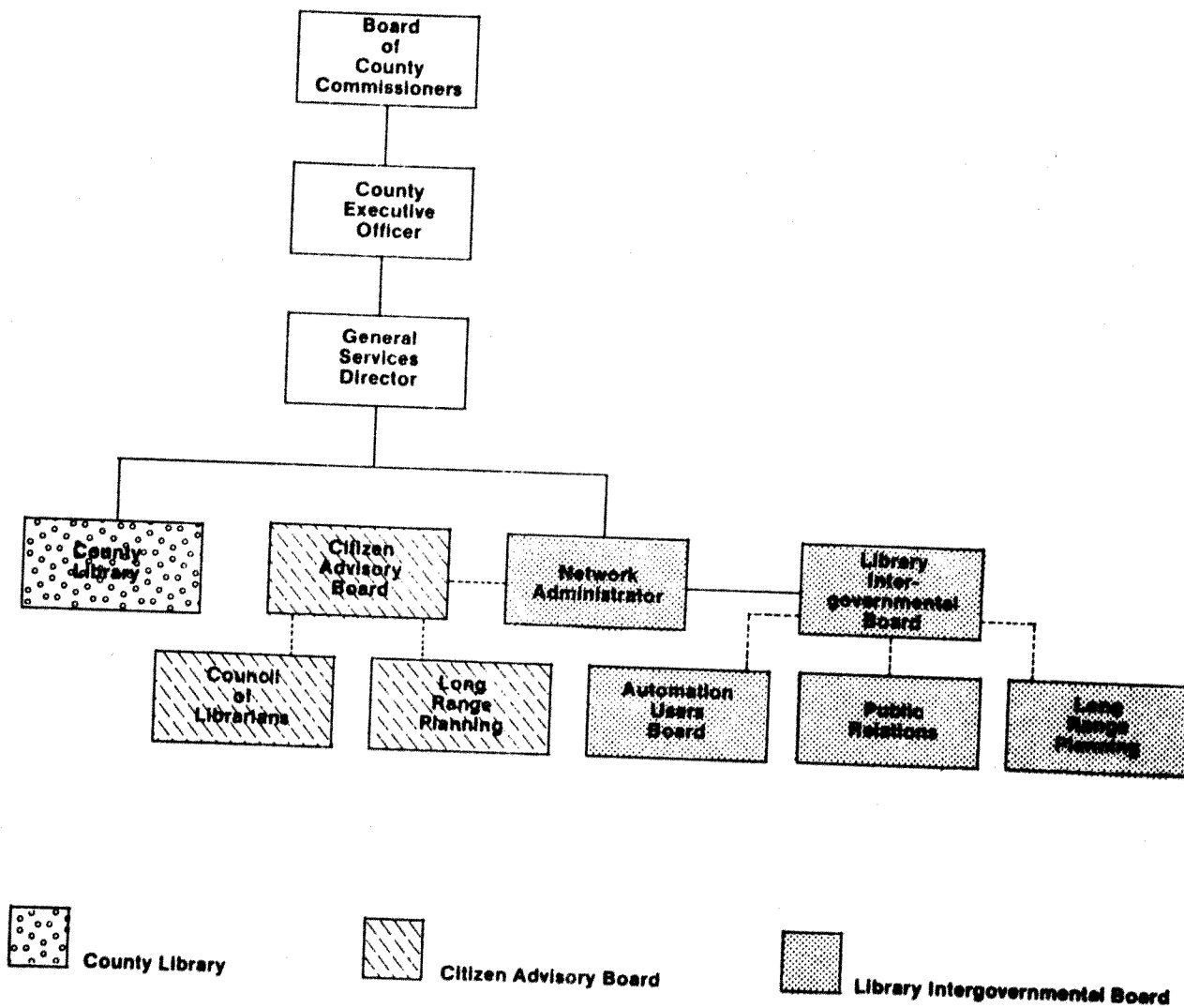
Administration is included above.

STRUCTURE: The County Library system is part of the Cooperative Library Network of Clackamas County is administered by the General Services Agency. The Agency is accountable to the Chief Executive Officer for administrative purposes. Carole Berggren is Director of General Services.

LOCATION: Main Library, under direct County control, is in Oregon City with branches in Damascus and Clackamas Town Center. The Oregon City Hilltop operation is proposed to be moved to the Oak Lodge area in April of 1989.

CONTACT: Carole Berggren at 655-8345

RELATIONSHIP OF THE COUNTY LIBRARY, CITIZEN ADVISORY BOARD AND NETWORK ADMINISTRATION



MULTNOMAH COUNTY

SERVICE: Libraries

DETAIL: Provides traditional library services, including direct loan, reference and reader's advisory. Participates in a cooperative agreement of lending books with Washington and Clackamas Counties.

TARGET POPULATION: Entire County.

LEVEL OF SERVICE: There are 16 sites plus a Bookmobile. The main branch is open 7 days a week, with other branches on varying schedules.

PROVIDERS OF SERVICE: The Library Association of Portland operates the Multnomah County Public Library system under a contract with Multnomah County.

REVENUE SOURCES ('88-'89):

PERSONNEL/CONTRACTS

Primarily supported by a three-year serial levy and county general funds. 390, of which 212 are full time.

STRUCTURE: The Association is a private, non-profit organization. Library Board of Directors consists of five members appointed by the Board of County Commissioners and seven members appointed by the Association.

LOCATION: The Association office is located on N.E. Russell in Portland.

CONTACT: Liaison Commissioner for this year is Commissioner Gladys McCoy.

LICENSES/PASSPORTS

COUNTY PROVIDERS

MULTNOMAH COUNTY

CLACKAMAS COUNTY

DEPARTMENT OF GENERAL SERVICES

COUNTY CLERK*

ASSESSMENT & TAXATION
TAX COLLECTION

EXISTING JOINT ACTIVITIES

*Elected Official

CLACKAMAS COUNTY

SERVICE: Licenses/Passports

DETAIL: Issues marriage licenses, processes liquor license and passport applications.

TARGET POPULATION: Serves entire County.

LEVEL OF SERVICE: For fiscal period 88-89, it is anticipated that 2,000 marriage licenses will be issues, and 1,400 passport applications and 254 liquor licenses will be processed.

PROVIDERS OF SERVICE: County Clerk provides all services directly.

REVENUE SOURCES ('88-'89):

Entirely fee supported

PERSONNEL/CONTRACTS

Part of 6 FTE in recording
section of Clerk's Office.

Administration is included above.

STRUCTURE: County Clerk is an independently elected official and responsible for the administration of the Clerk's Office. John Kauffman is the County Clerk.

LOCATION: County Clerk is located in the County Courthouse on Main Street in Oregon City.

CONTACT: John Kauffman at 655-8551.

MULTNOMAH COUNTY

SERVICE: Licenses/Passports

DETAIL: Issues marriage licenses and performs marriages, processes passport applications, sells dog licenses and licenses guns.

TARGET POPULATION: Entire county.

LEVEL OF SERVICE: Estimate that annually perform 100 marriage ceremonies; issue 6000 marriage licenses; 3500 passport applications; and 2,500 other licenses are processed.

PROVIDERS OF SERVICE: Tax Collection provides all services directly.

REVENUE SOURCES ('88-'89):

PERSONNEL/CONTRACTS

Primarily fee supported

3 FTE

Administration included above.

STRUCTURE: Tax Collection is a section of Assessment and Taxation. Assessment and Taxation is a Division of the Department of General Services. The Department is accountable to the County Chair for administrative purposes. Kathy Tuneberg is Manager of Tax Collections.

LOCATION: Tax Collection is located on S.W. Alder in Portland.

CONTACT: Kathy Tuneberg at 248-3326.

LONG TERM CARE FOR
ELDERLY AND DISABLED

SCREENING & CASE MANAGEMENT
HEALTH & SOCIAL SERVICES
PROTECTIVE SERVICES
AUTHORIZE PLACEMENTS
IN-HOME SERVICES
INDIGENT BURIAL
PUBLIC GUARDIANSHIP &
CONSERVATORSHIP

COUNTY PROVIDERS

MULTNOMAH COUNTY

DEPARTMENT OF HUMAN SERVICES
AGING SERVICES

CONTRACTORS

CLACKAMAS COUNTY

DEPARTMENT OF HUMAN SERVICES
SOCIAL SERVICES DIVISION
AREA AGENCY ON AGING

CONTRACTORS

EXISTING JOINT ACTIVITIES

INTAKE
VACANCIES

CLACKAMAS COUNTY

SERVICE: Long Term Care for Elderly and Low Income Disabled

DETAIL: Determine eligibility, authorize placement, and continue to assess the needs of elderly and disabled in long term care facilities, including nursing homes, residential facilities and foster homes. Investigate incidences of abuse and provide protective services for those in jeopardy. Provide public guardian and conservator services to those declared mentally incapacitated by the Court.

TARGET POPULATION: In 1987, the senior population was 37,727 and the estimated number of disabled people of all ages reached 34,748.

LEVEL OF SERVICE: August 1988 caseload reached 1,127. Screen close to 2,250 per month and receive 258 protective service referrals per month.

PROVIDERS OF SERVICE: Area Agency on Aging, a section of the Social Services Division, is the lead agency directly providing screening and case management, as well as contracting for Public guardianship/conservatorship through a non-profit organization providing "corporate" guardianship; and Residential and alternative facilities.

REVENUE SOURCES ('88-'89):

Almost entirely grant monies,
with 2% county general funds.

PERSONNEL/CONTRACTS

Total Aging staff is 45 FTE
and 20 contracts for all programs.

STRUCTURE: Social Services is a Division of the Department of Human Resources. The Department is accountable to the Chief Executive Officer for administrative purposes. John Mullin is the director of Social Services.

LOCATION: Social Services is located on Main Street, Oregon City.

CONTACT: John Mullin at 655-8640.

MULTNOMAH COUNTY

SERVICE: Long Term Care for Elderly and Low Income Disabled

DETAIL: Determine eligibility , authorize placement, and continue to assess the needs of elderly and disabled in long term care facilities, including nursing homes, residential facilities and foster homes. Provide health and social services at four branch offices throughout the County. Investigate incidences of abuse and provide protective services for those in jeopardy. Provide public guardian and conservator services to those declared mentally incapacitated by the Court, and burial/cremation services for deceased indigent persons.

TARGET POPULATION: Projected for 88-89, the population of seniors living in poverty will reach 11, /23 and younger disabled will be at 3,986. Projected population of all seniors is between 55,000 - 60,000.

LEVEL OF SERVICE: For 88-89, it is anticipated that 7,803 elderly and 1,424 disabled will receive long term care and protective assistance. An additional 179 will receive guardianship/conservatorship services.

PROVIDERS OF SERVICE: Aging Services Division is the lead agency providing direct service in all areas except indigent burial and long term care facilities --both of which are contracted out.

REVENUE SOURCES ('88-'89):

PERSONNEL/CONTRACTS

Long term care: 97% grant, 3% County general fund	87.76 FTE and ____ contracts
Public Guardian: 16% other funds, 84% county general fund	
Indigent burial: entirely county general fund.	

STRUCTURE: Aging Services Division is within the Department of Human Services. The Department is accountable to the County Chair for administrative purposes. Jim O'Connell is manager of Aging Services.

LOCATION: Aging Services is located at S.W. Stark and four branch offices throughout the County.

CONTACT: Jim McConnell at 248-3646

PLANNING AND ADMINISTRATIVE SUPPORT

AGING SERVICES AND LONG TERM CARE

CLACKAMAS COUNTY

No additional personnel are shown for administration and planning for the Area Agency on Aging of the Social Services Division.

Within the Department of Human Services where the Social Services Division is located, the Director has a staff of 5.5 FTE, which supports the activities of the entire department, with 100% other funds.

MULTNOMAH COUNTY

There is a separate section for planning and administration in the Aging Division which has been shown in the detail on Aging Services.

Additionally, within the Department of Human Services, where the Aging Services Division is located, there is a separate Director's Office section of 17 FTE personnel which supports the activities of the entire department, with 99% county general funds.

MENTAL HEALTH SERVICES

MENTAL AND EMOTIONAL DISABILITIES
DEVELOPMENTALLY DISABLED
ALCOHOL AND DRUG ABUSE

COUNSELLING
TREATMENT AND PREVENTION
PROTECTIVE SERVICES
REHABILITATIVE SERVICES
RESIDENTIAL CARE
EMERGENCY RESPONSE

COUNTY PROVIDERS

MULTNOMAH COUNTY

DEPARTMENT OF HUMAN SERVICES
SOCIAL SERVICES DIVISION
MENTAL & EMOTIONAL DISABILITIES
DEVELOPMENTALLY DISABLED
ALCOHOL & DRUG ABUSE

CONTRACTORS

CLACKAMAS COUNTY

DEPARTMENT OF HUMAN SERVICES
MENTAL HEALTH DIVISION

CONTRACTORS

EXISTING JOINT ACTIVITIES

SUPERVISION OF RESIDENTIAL CARE PROVIDERS

CLACKAMAS COUNTY

SERVICE: Mental Health -- Mental and Emotional Disabilities.

DETAIL: Provide evaluation, treatment (day and outpatient), crisis intervention, pre-commitment screening, protective services, specialized living skills and vocational training for the low income chronically mentally ill and those at risk of developing severe mental or emotional problems at five centers throughout the County. Authorize and supervise placement in residential care facilities. Manages and oversees direct state payments to local providers.

TARGET POPULATION: In 1987, low income adults needing mental health services reached _____, and _____ children were at risk of severe emotional disability.*

LEVEL OF SERVICE: For '88-'89, it is anticipated that between 450-500 will be served in Child/Family Outpatient; 36 in Adolescent Day Treatment, 850 in crisis intervention, 500 in pre-commitment screening, and 333 in community support services for chronically mentally ill and those referred by the Psychiatric Security Review Board.

PROVIDERS OF SERVICE: Mental Health Division is the lead agency providing direct service through five centers throughout the county and contracts for residential care and day care center with outside agencies, such as Mageske Care Homes.

REVENUE SOURCES ('88-'89):

63% state/federal
10% county general funds
27% other

PERSONNEL/CONTRACTS

39 FTE and 7 program contracts

STRUCTURE: Mental Health is a division within the Department of Human Services; Robert J. King, Phd, is director of Mental Health. The Department is accountable to the Chief Executive Officer for administrative purposes.

LOCATION: Mental Health is located at Marylhurst College and four other centers throughout the county.

CONTACT: Irene Fischer-Davidson at 655-8651.

*Do not maintain this information.

MULTNOMAH COUNTY

SERVICE: Mental Health -- Mental and Emotional Disabilities

DETAIL: Provide community based psychiatric treatment, pre-commitment services, residential care, crisis intervention, homeless shelter, protective and support services to low income chronically mentally ill adults and children at risk of severe emotional disability. Comparable services are provided to those referred by the Psychiatric Review Board. Operates school mental health program through area schools. Manages and oversees direct state payments to local providers.

TARGET POPULATION: In 1987, there were 15,000 chronically mentally ill low income adults and 4,700 children at risk of severe emotional disability.

LEVEL OF SERVICE: In 1987, 8,000 adults were served in all programs and over 1,200 children at risk received service.

PROVIDERS OF SERVICE: Mental and Emotional Disabilities is a section of the Social Services Division and the lead agency providing a majority of its services by contract with outside providers located throughout the County, including the Mageske Care Homes, Providence Medical Center and Metro Crisis. This section provides direct counselling to the School Mental Health program and contract administration.

REVENUE SOURCES ('88-'89):

80% state/federal
18% county general funds
2% other

PERSONNEL/CONTRACTS

Contract Admin.: 10.9 FTE
and 26 contracts
School Program: 10.66 FTE

STRUCTURE: Social Services is a division within the Department of Human Services; Gary Smith is director of the Division. The Department is accountable to the County Chair for administrative purposes.

LOCATION: Social Services Division is located on S.W. Stark in Portland and service delivery occurs at over 100 sites throughout the County.

CONTACT: Gary Smith at 248-3691

CLACKAMAS COUNTY

SERVICE: Mental Health -- Developmentally Disabled

DETAIL: Provide early intervention and placement of children, ages 0 - 5; evaluation, treatment, supported employment services, casemanagement, placement in residential care homes, and other community based services for developmentally disabled persons -- particularly as an option to Fairview. Manages and oversees direct state payments to local providers.

TARGET POPULATION: In 1987, the population of developmentally disabled persons reached ____.*

LEVEL OF SERVICE: Projected for 88-89, 85 will be served by Early Intervention and between 450-475 will be served by all other programs.

PROVIDERS OF SERVICE: Mental Health is the lead agency providing case management, evaluation, screening and placement with specialized treatment, training, and support services. Residential care is contracted to outside agencies, such as Albertina Kerr, Morrison Center and Mageske Care Homes.

REVENUE SOURCES ('88-'89):

PERSONNEL/CONTRACTS

97.9%, state funds
2% county general funds
.1% other funds

7.50 FTE and 23 contracts

STRUCTURE: Mental Health is a division within the Department of Human Services; Robert J. King, Phd, is director of Mental Health. The Department is accountable to the Chief Executive Officer for administrative purposes.

LOCATION: Mental Health is located at Marylhurst College and four other centers throughout the county.

CONTACT: Irene Fischer-Davidson at 655-8651.

*Do not maintain this information.

MULTNOMAH COUNTY

SERVICE: Mental Health -- Developmentally Disabled

DETAIL: Provide family support, skills training, residential care, case management, early intervention, vocational services, client advocacy and protective services. Focus on community based services as an option to Fairview. Manages and oversees direct state payments to local providers.

TARGET POPULATION: In 1987, the population of developmentally disabled people reached 3,545.

LEVEL OF SERVICE: In 1987, 1,600 developmentally disabled persons were served by all programs.

PROVIDERS OF SERVICE: Developmental Disabilities, a section of Social Services Division, is the lead agency directly providing intake, referral and case management services and administration of 85 foster homes. Other services are contracted to outside agencies, including Albertina Kerr, Morrison Center and Mageske Care Homes.

REVENUE SOURCES ('88-'89):

93% state/federal
.07% county general funds

PERSONNEL/CONTRACTS

25.5 FTE in direct service
& administration of 85 foster homes, and 41 contracts.

STRUCTURE: Social Services is a division within the Department of Human Services; Gary Smith is director of the Division. The Department is accountable to the County Chair for administrative purposes.

LOCATION: Social Services Division is located on S.W. Stark in Portland and service delivery occurs throughout the county.

CONTACT: Gary Smith at 248-3691

CLACKAMAS COUNTY

SERVICE: Mental Health -- Alcohol and Drug Abuse

DETAIL: Provide alcohol and drug treatment on an outpatient and residential care basis, with specific programs aimed at youth prevention, elderly, persons found driving under the influence of intoxicants, as well as general population. Services are provided at five centers throughout the county. Manages and oversees direct state payments to local providers.

TARGET POPULATION: In 1987, the population of problem drinkers, alcoholics and drug dependent people reached ____.*

LEVEL OF SERVICE: For '88-'89, it is anticipated that between 230-250 will be served by alcohol outpatient services; between 900-920 by DUII programs; between 110-140 by drug outpatient services; between 95-100 in youth drug and alcohol; 200 in youth prevention and 45 in the elderly services.

PROVIDERS OF SERVICE: Mental Health is the lead agency providing direct service through its five centers in all programs except a joint venture (with Washington County) residential care and detox program at Harmony House.

REVENUE SOURCES ('88-'89):

PERSONNEL/CONTRACTS

42% state/federal
18% county general funds
40% other

18.50 FTE and 2 contracts

STRUCTURE: Mental Health is a division within the Department of Human Services; Robert J. King, Phd, is director of Mental Health. The Department is accountable to the Chief Executive Officer for administrative purposes.

LOCATION: Mental Health is located at Marylhurst College and four other centers throughout the county.

CONTACT: Irene Fischer-Davidson at 655-8651.

*Do not maintain this information

MULTNOMAH COUNTY

SERVICE: Mental Health -- Alcohol and Drug Abuse

DETAIL: Provide detoxification, emergency response, outpatient counselling, residential care and education to substance abusers with specific projects aimed at youths, dependent homeless, DUII offenders, and AIDS outreach and education services. Responsible for inebriate pick-up and transportation. Manages and oversees direct state payments to local providers.

TARGET POPULATION: In 1987 the population of problem drinkers, alcoholics and drug dependent people reached 88,000.

LEVEL OF SERVICE: In 1987, 17,500 were served by all programs.

PROVIDERS OF SERVICE: Alcohol and Drug, a section of the Social Services Division, is the lead agency directly providing coordination and planning of community-wide DUII programs, program development, AIDS education and administration of community based treatment agencies, such as Harmony House and Providence Medical Center.

REVENUE SOURCES ('88-'89):

PERSONNEL/CONTRACTS

73% state/federal
19% county general funds
8% other

8 FTE and 21 contracts

STRUCTURE: Social Services is a division within the Department of Human Services; Gary Smith is director of the Division. The Department is accountable to the County Chair for administrative purposes.

LOCATION: Social Services is located on S.W. Stark in Portland and service delivery occurs throughout the County.

CONTACT: Gary Smith at 248-3691.

PLANNING AND ADMINISTRATIVE SUPPORT

MENTAL HEALTH (MED, DD AND A&D)

CLACKAMAS COUNTY

Within the Mental Health Division, there is a separate administrative section devoted to contract management, planning and grant application for the entire division, requiring 3.55 FTE personnel with 19.4% county general funds.

An additional Administrative Support section is also located within the Division, providing full service accounting, such as client billings, requiring 12.5 FTE and funded by other funds.

Within the Department of Human Services, where the Mental Health Division is located, the Director has a staff of 5.5 FTE which supports the activities of the entire department with 100% other funds.

MULTNOMAH COUNTY

Aside from contract administration shown in the service detail, the Social Services Division carries an administration section which supports all the activities of the Division, requiring 10.43 FTE personnel, with funding split between grants and county general funds.

Within the Department of Human Services, where the Social Services Division is located, there is a separate Director's Office section of 17 FTE personnel which supports the activities of the entire department with 99% county general funds.

PARKS

DEVELOPMENT
MAINTENANCE
RECREATION FACILITIES
CEMETERIES

COUNTY PROVIDERS

MULTNOMAH COUNTY

DEPARTMENT OF ENVIRONMENTAL SERV.
PARKS DIVISION

CLACKAMAS COUNTY

DEPARTMENT OF TRANSPORTATION
AND DEVELOPMENT
OPERATIONS
PARKS

CONTRACTORS

EXISTING JOINT ACTIVITIES

METRO TRI-COUNTY OPEN SPACES STUDY

CLACKAMAS COUNTY

SERVICE: Parks

DETAIL: Operate and maintain seven regional parks, four boat ramps, and one neighborhood park. Maintain an additional six undeveloped parks. Ongoing parks plan supports development of facilities at existing parks. Promoting neighborhood parks in the unincorporated urban areas of the County. Offer contract landscape maintenance service to other jurisdictions.

TARGET SERVICE AREA: Regional parks serve the County and the Metropolitan region.

LEVEL OF SERVICE: Total parks acreage is 609. Facilities at all park sites include: 16 group picnic areas, 4 ball diamonds, 4 covered shelters, 6 caretakers residences, 23 restrooms, 2 tennis courts, nature trails, 150 campsites with 5 showers/restrooms for overnight campers and river access year round at 13 locations for fishermen and boaters. Estimated use of Metzler Park campgrounds was 4,000 for 1987.

PROVIDERS OF SERVICE: Parks provides all services directly. The County is participating in a Tri-County study of all open spaces, both public and private, that METRO has undertaken.

REVENUE SOURCES ('88-'89):

PERSONNEL/CONTRACTS

Totally fee and other funds supported.

9 FTE

STRUCTURE: Parks is a section of Operations which is a Division of the Department of Transportation and Development. The Department is accountable to the Chief Executive Officer for administrative purposes. Richard Dopp is Director of Operations and Dan Zinzer is Director of Parks.

LOCATION: Park Administration is located on Abernethy Road in Oregon City. Operations occurs at the park sites.

CONTACT: Dan Zinzer at 655-8521.

MULTNOMAH COUNTY

SERVICE: Parks

DETAIL: Operates and maintains a system of regional parks throughout the County, 10 neighborhood parks in mostly East County ;and 14 pioneer cemeteries in the County. Included in the parks system are various boat lanuching facilities. Administers Glendevveer Golf Course contract and maintains the acquisition and further development of existing system. Recently approved Marine Facilities Fund will improve boater facilities.

TARGET SERVICE AREA: Regional parks serve the County, the Metropolitan region and an increasing number of tourists. Neighborhood parks are located in Southwest and Southeast Portland and Gresham.

LEVEL OF SERVICE: Total regional park acreage is 1,868.22; cemeteries cover 66.6 acres; and neighborhood parks cover 68.32 acres. Regional parks include Oxbow and Blue Lake which are open year round and offer picnicing, boating, camping, swimming, hiking, equestrian trails, fishing, family oriented outdoor education programs, special children's programs and summer concerts, etc. Visitation at Oxbow in 1987 reached 250,000 including 10,000 camper-nights. Blue Lake visits in 1987 amounted to 262,000 plus between 7,000 and 10,000 users of The Lakehouse. Among the cemeteries maintained is the historic Lone Fir Cemetery.

PROVIDERS OF SERVICE: Parks Division provides for operation and maintenance of parks, planning and development plans and contracts for landscape design and construction, operation and maintenance of the golf course and interment. The County is participating in a Tri-County study of open spaces, both public and private, that METRO has undertaken.

REVENUE SOURCES ('88-'89):

1% state/federal
35% county general fund
64% other (primarily park
user fees)

PERSONNEL/CONTRACTS

18.5 FTE and 12 contracts

STRUCTURE: Parks is a Division of the Department of Environmental Services. The Department is accountable to the County Chair for administrative purposes. Charles Ciecko is manager of the Division.

LOCATION: Park Administration is located in the John Yeon Shops, Vance Center, on S.E. 190th in Gresham. Cemeteries Administration is located on S.E. Morrison in Portland. Maintenance facilities are located at Blue Lake and Oxbow Parks. There is a separate facility at 43rd and Marine Drive for the Memorial Boat Ramp.

CONTACT: Charles Ciecko at 248-5050.

PLANNING AND ADMINISTRATIVE SUPPORT

PARKS

CLACKAMAS COUNTY

Within the Operations Division, where Parks is located, there is a separate administration section with a staff of 16 FTE which supports the activities of the entire Department of Transportation and Development with funding from the road fund.

Within the Department of Transportation and Development, where Operations is located, there are 10 staff providing general overhead support for the entire Department funded by the road fund.

MULTNOMAH COUNTY

Within the Department of Environmental Services, where the Parks Division is located, there is a separate administrative section, with a staff of 7.80 FTE providing overall management and policy direction to the entire Department, as well as financial management and operations of various project funds, which is funded 22% by road fund, 36% county general fund and 42% by other funds.

PUBLIC HEALTH SERVICES

PERSONAL HEALTH

CLINICS
FIELD SERVICES
VITAL STATISTICS
EMERGENCY MEDICAL SERVICES
PREVENTION/EDUCATION
COMMUNICABLE DISEASE CONTROL

CORRECTIONS HEALTH

SCREENING
MEDICAL SERVICES

COMMUNITY HEALTH

ENVIRONMENTAL HEALTH
MEDICAL EXAMINER

COUNTY PROVIDERS

MULTNOMAH COUNTY

DEPARTMENT OF HUMAN SERVICES
HEALTH DIVISION

DEPARTMENT OF JUSTICE SERVICES
MEDICAL EXAMINER

CONTRACTORS

CLACKAMAS COUNTY

DEPARTMENT OF HUMAN SERVICES
PUBLIC HEALTH

VECTOR CONTROL DISTRICT

SHERIFF*
JAIL MEDICAL SERVICES

CONTRACTORS

EXISTING JOINT ACTIVITIES

FORENSIC PATHOLOGY
FAMILY PLANNING

*Elected Official

CLACKAMAS COUNTY

SERVICE: Public Health Services -- Personal Health

DETAIL: Provides childhood immunizations, communicable disease testing and treatment, dental care for children, and special programs for women and children. Family planning services are available at four locations throughout the County. Visiting nurses track high risk newborns. Operates a primary care clinic for low income persons. Provide limited nursing services to schools, and Clackamas County ESD. Maintains vital statistics and oversees emergency medical services.

TARGET POPULATION: According to the Center for Population Research & Census, the 1980 population of low income persons, by household, reached 27,458, or 32% of the County's households. (Low income defined as \$0-\$14,999 annually)

LEVEL OF SERVICE: For '88-'89, it is anticipated that: over 1,000 will receive indigent primary care services at the clinics; 2,420 will receive care under the Well Child, and Women, Infants & Children programs; 3,520 will receive family planning services; 600 will be included in the prenatal services; 5,500 childhood immunization will be given; 900 will be screened and treated for communicable diseases; 990 home nursing visits will be made; 250 will receive dental care; and 700 referrals to physicians, other health care providers and hospitals.

PROVIDERS OF SERVICE: Public Health Division provides all services directly, with primary care limited to one nurse practitioner and referral is made to local doctors who agree to accept patients without fee. Further referrals are to Neighborcare/Health Help in Portland and Oregon Health Sciences University for hospitalization and delivery. Dentists volunteer their services. Ambulance providers for 911 response are franchised by the county.

REVENUE SOURCE ('88-'89):

40% state/federal
40% county general funds
20% other

PERSONNEL/CONTRACTS:

50 FTE and 4 contracts

STRUCTURE: Public Health is a division of the Department of Human Services; Thomas M. Troxel is the Director of the Division. The Department is accountable to the Chief Executive Officer for administrative purposes.

LOCATION: Public Health is located on S. Kaen Road, Oregon City with three other locations in the County for family planning services.

CONTACT: Margaret Slagle at 655-8471

MULTNOMAH COUNTY

SERVICE: Public Health Services -- Personal Health

DETAIL: Operates five full service clinics county-wide, a storefront clinic in downtown Portland, and teen clinics in four high schools. Clinics provide in-house pharmacy, labs, x-rays, communicable disease testing and treatment, childhood immunizations, dental care, 24-hour emergency service, and special programs for women and children. Visiting nurses provide health care to at risk elderly and young parents and infants. Responsible for refugee care in first 18 months for tri-county area. Operates Multicare, a pre-paid health insurance program for medicaid eligible persons. Maintains vital statistics and oversees emergency medical services.

TARGET POPULATION: In 1987 population of low-income persons reached 70,000, refugees 1,490, teenagers (12-17 yrs) 7,000, and at risk elderly 1,387.

LEVEL OF SERVICE: For '88-'89, it is anticipated that 35,000 will receive indigent primary care services at the clinics; 15,000 will receive care under the Well Child, and Women, Infants & Children programs; 6,500 will receive family planning services; 2,200 will be included in the prenatal services; 16,000 childhood immunization will be given; 13,000 will be screened and treated for communicable diseases; 600 refugees will receive health screening; 2,200 teens will visit high school clinics; 20,000 home nursing visits will be made; and 10,000 referrals to specialty physicians and hospitals. For 1988, 3500 persons are enrolled in Multicare. Vital statistics, on the average, manages 20,000 records a year. Health Information and Referral responds to 45,000 telephone requests for health information each year.

PROVIDERS OF SERVICE: Health Division directly operates all primary care services, including operating four pharmacies, and contracts for outpatient specialty and hospital care, and emergency medical services.

Two ambulance providers will be chosen for 911 emergency response.

REVENUE SOURCES: ('88-'89):

PERSONNEL/CONTRACTS

31% state/federal
48% county general funds
21% other

341.68 FTE and 99 contracts

STRUCTURE: Health is a division within the Department of Human Services; Billie I. Odegard is the director of the Division. The Department is accountable to the County Chair for administrative purposes.

LOCATION: Health Division is located at S.W. Stark with five other clinics located throughout the County, as well as four teenage clinics.

CONTACT: Dwayne Prather at 248-3674.

CLACKAMAS COUNTY

SERVICE: Public Health Services -- Community Health

DETAIL: Responsible for inspection and licensing of all facilities used by the public to prevent spread of communicable diseases. Implements measures to halt spread of such diseases. Controls the spread of disease carrying vectors. Determines cause of death when a physician cannot legally define the cause according to state law.

SERVICE AREA: All facilities open to the public where spread of communicable disease is likely. All deaths within the county where cause is unknown.

LEVEL OF SERVICE: For 87-88 it is estimated that over 1,000 inspections will be made. In 1987 300 deaths were investigated.

PROVIDERS OF SERVICE: Public Health provides for all inspection of public facilities. Deputies perform routine death investigations, the balance are performed at the Multnomah County Medical Examiner facility. Vector control is provided by a special service district.

REVENUE SOURCES ('88-'89):

Public Health: 20% state/federal,
10% county general funds, 70% other

PERSONNEL/CONTRACTS

12 FTE and 1 contract

STRUCTURE: Public Health is a division of the Department of Human Services; Thomas M. Troxel is the Director of the Division. The Department is accountable to the Chief Executive Officer for administrative purposes. Vector Control is a special service district outside of county government.

LOCATION: Public Health is located on S. Kaen Road in Oregon City

CONTACT: Margaret Slagle at 655-8471, Public Health.

MULTNOMAH COUNTY

SERVICE: Public Health Services -- Community Health

DETAIL: Responsible for inspection and licensing of all facilities used by the public to prevent spread of communicable diseases. Implements measures to halt spread of such diseases. Controls spread of disease carrying vectors and noxious weeds. Determines cause of death when a physician cannot legally define death according to state law.

SERVICE AREA: All facilities open to the public where spread of communicable disease is likely and roadside vegetation existing within the county. All deaths within the County when cause is unknown.

LEVEL OF SERVICE: For '87-'88 it is estimated that 14,380 inspections will be made, vector complaints will reach 5,370 and 484 miles of roadside vegetation will be maintained. For the period 86 - 87 approximately 2,945 deaths were investigated.

PROVIDERS OF SERVICE: County Health Officer directs the Disease Control section of the Health Division. Disease Control provides all services directly. Medical Examiner's Office conducts investigations into the cause of death for the County and, as requested, for other jurisdictions including Clackamas, Washington and Clark Counties. The office is a joint operation with the State Medical Examiner.

REVENUE SOURCES ('88-'89):

PERSONNEL/CONTRACTS

Health Division:

.01% state/federal, 44% county
general funds, 55% other

35.90 FTE and 5 contracts

Medical Examiner:

95% county general funds, .05% other

8.50 FTE and ___ contracts

STRUCTURE: Health is a division within the Department of Human Services; Billi Odegaard is the Director of the Division. Medical Examiner is a division within the Department of Justice Services; Bob Felton is Manager of the Division. Both Departments are accountable to the County Chair for administrative purposes.

LOCATION: Health Division is located at S.W. Stark Ave; Sanitarians on Columbia Blvd, and the Medical Examiner at N.E. Knott.

CONTACT: Dwayne Prather at 248-3674, Health, and Bob Felton at 248-3746, Medical Examiner.

CLACKAMAS COUNTY

SERVICE: Health Services -- Corrections Health

DETAIL: Provides health care for inmates at Clackamas County Corrections Facility, including screening, monitoring, education and treatment of acute medical problems.

TARGET POPULATION: All persons confined in the Clackamas County Corrections Facility; for 1987 the population was 8,007.

LEVEL OF SERVICE: Patient contacts with nurses on staff for the 18 month period from 1/86 through 6/87 were 9,010; with physician at facility 781; with outside physicians and dentists 318.

PROVIDERS OF SERVICE: Jail Medical Services of the Sheriff's Department provides nursing services on a daily basis with a physician available once a week, and contracts for specialized treatment with Clackamas County Mental Health and Health Departments, Oregon State Health and community dentists and other health service providers.

REVENUE SOURCES ('88-'89):

Sheriff's Dept. is funded 85% by a three year serial levy and 15% from other funds.

PERSONNEL/CONTRACTS

Jail Med Services:
4.1 FTE and 1 contracts
with a physician

STRUCTURE: The Sheriff is an independently elected official and responsible for the administration of the Sheriff's Department.

LOCATION: Clackamas County Corrections Facility is located on S. Kaen Road, Oregon City.

CONTACT: Phyllis Flowers, Jail Medical Services, at 655-8331

MULTNOMAH COUNTY

SERVICE: Public Health Services -- Corrections Health

DETAIL: Provide in-house medical, dental and psychiatric care to persons in custody at five county correctional facilities and the juvenile detention center. Responsible for inpatient and outpatient hospitalization.

TARGET POPULATION: All persons confined in correctional facilities in the county. For 1987, the population was 26,581.

LEVEL OF SERVICE: For the period 87 - 88, it is estimated that 27,000 will receive health screening, clinic and infirmary visits will reach 15,300 and 350 will be admitted to a hospital.

PROVIDERS OF SERVICE: Health Division provides all health care services, except for hospitalization which is contracted out to Portland Adventist Hospital.

REVENUE SOURCES ('88-'89):

90% county general funds
10% other

PERSONNEL/CONTRACTS

36.80 FTE and 3 contracts
An additional 6.75 will be added once the new Inverness jail is operational.

STRUCTURE: Corrections Health is a section in the Health Division. Health is a division within the Department of Human Services. Billie Odegaard is the director of the Division. The Department is accountable to the County Chair for administrative purposes.

LOCATION: Health Division is located at S.W. Stark. Corrections Health is located at each of the four correctional facilities and the Donald E. Long Home.

CONTACT: Dwayne Prather at 248-3674.

MULTNOMAH COUNTY

SERVICE: Public Health Services -- Corrections Health

DETAIL: Provide in-house medical, dental and psychiatric care to persons in custody at five county correctional facilities and the juvenile detention center. Responsible for inpatient and outpatient hospitalization.

TARGET POPULATION: All persons confined in correctional facilities in the county. For 1987, the average daily population was 862.

LEVEL OF SERVICE: For the period 87 - 88, it is estimated that 22,000 will receive health screening, clinic and infirmary visits will reach 13,290 and 807 will be admitted to a hospital.

PROVIDERS OF SERVICE: Health Division provides all health care services, except for hospitalization which is contracted out to Portland Adventist Hospital.

REVENUE SOURCES ('88-'89):

90% county general funds
10% other

PERSONNEL/CONTRACTS

36.80 FTE and contracts
An additional 6.75 FTE will be added once the new Inverness jail is operational.

STRUCTURE: Corrections Health is a section in the Health Division. Health is a division within the Department of Human Services. Billi Odegaard is the director of the Division. The Department is accountable to the County Chair for administrative purposes.

LOCATION: Health Division is located at S.W. Stark. Corrections Health is located at each of the four correctional facilities and the Donald E. Long Home.

CONTACT: Dwayne Prather at 248-3674.

PLANNING AND ADMINISTRATIVE SUPPORT

HEALTH SERVICES

CLACKAMAS COUNTY

Administrative personnel which support all the activities of Public Health are included in the detail on Health Services -- Personal health.

Within the Department of Human Services, where Public Health is located, the Director has a staff of 5.5 FTE which supports all the activities of the Department with 100% other funds.

Within the Sheriff's Office there is a separate administrative section which supports the activities of the entire Office with _____ personnel, funded, generally, by a three year serial levy.

MULTNOMAH COUNTY

There is a separate section for program planning, education and administrative support within the Health Division with 19.40 FTE staff supporting the activities of the entire Division with 11% grant monies and the balance county general funds.

Within the Department of Human Services, where the Health Division is located, there is a separate Director's Office section of 17 FTE personnel which supports the activities of the entire Department with 99% county general funds.

Within the Department of Justice Services, where the Medical Examiner's Office is located, there is a separate administrative section with a staff of 4 FTE which supports all the activities of the Department with 100% county general funds.

PUBLIC HOUSING

COUNTY PROVIDERS

MULTNOMAH COUNTY

HOUSING AUTHORITY OF PORTLAND

Under a cooperative agreement with the County, the Housing Authority of Portland, a public corporation, provides and manages low income housing in the unincorporated areas of the County and the city of Gresham.

CLACKAMAS COUNTY

DEPARTMENT OF HUMAN SERVICES

HOUSING AUTHORITY OF CLACKAMAS
COUNTY

Housing Authority is a separate corporation with identical Commissioners to the Board of County Commissioners, and provides and manages low income housing in the County under the County's statutory authority.

PUBLIC SAFETY COMMUNICATIONS

9 1 1
E 9 1 1
DISPATCH

COUNTY PROVIDERS

MULTNOMAH COUNTY

*County participates with
cities in 9 1 1 system
operated by city of Portland.

CLACKAMAS COUNTY

GENERAL SERVICES AGENCY

CLACKAMAS COUNTY COMMUNICATIONS
DEPARTMENT

EXISTING JOINT ACTIVITIES

CLACKAMAS COUNTY

SERVICE: Public Safety Communications.

DETAIL: Operates a centralized communications center serving as a 9 1 1 public safety answering point for citizens throughout the County and providing additional seven-digit answering as required by state law. Also provides public safety two-way radio dispatching to various law enforcement and fire/EMS agencies within the County.

TARGET POPULATION: Unincorporated portions of the County (approx. 180,000) and the cities of Oregon City, Sandy, Molalla, Estacada, Wilsonville, Johnson City and Happy Valley.

LEVEL OF SERVICE: Provides service to four law enforcement agencies, 13 fire districts and five miscellaneous internal County departments. The system used for the public safety "answering point" is the E 9 1 1.

PROVIDERS OF SERVICE: Communications Department provides all services directly.

REVENUE SOURCES ('88-'89):

25% state (telephone tax)
75% other (user fees)

PERSONNEL/CONTRACTS

34 FTE permanent and 3
part-time

Administration is included above.

STRUCTURE: Communications is a Department of the General Services Agency. The Agency is accountable to the Chief Executive Officer for administrative purposes. Carole Berggren is Director of the Agency.

LOCATION: Communications is located on S. Kaen Road in Oregon City.

CONTACT: Carole Berggren at 655-8345 or Jean Gerald at 655-8371.

SOLID WASTE

REGULATION OF HAULERS
RECYCLING PROGRAMS
LAND FILL
NOXIOUS WEED CONTROL

COUNTY PROVIDERS

MULTNOMAH COUNTY

**Cities manage haulers
and recycling programs
within their service areas.

CLACKAMAS COUNTY

DEPARTMENT OF TRANSPORTATION
AND DEVELOPMENT

COMMUNITY ENVIRONMENT

EXISTING JOINT ACTIVITIES

CLACKAMAS COUNTY

SERVICE: Solid Waste

DETAIL: Administers franchised system of solid waste collection in the unincorporated areas of the County and promotes recycling through educational programs. Manages closed Oregon City Land Fill to guard against environmental hazards that may develop.

TARGET SERVICE AREA: Unincorporated areas of the County.

LEVEL OF SERVICE: For the fiscal period 87-88, it is anticipated that 12,000 tons of solid waste will be recycled.

PROVIDERS OF SERVICE: Community Environment provides all management functions.

REVENUE SOURCES ('88-'89):

PERSONNEL/CONTRACTS

Totally fee supported (Management of land fill is from Trust set up by Operator.)

2.2 FTE

STRUCTURE: Community Environment is a section of Operations which is a Division of the Department of Transportation and Development. The Department is accountable to the Chief Executive Officer for administrative purposes. Richard Dopp is Director of the Division and Dave Phillips is the Administrator of Community Environment.

LOCATION: Community Environment is located on Abernethy Road in Oregon City.

CONTACT: Richard Dopp at 655-8521.

CLACKAMAS COUNTY

SERVICE: Noxious Weed Control

DETAIL: Controls spread of noxious weeds. Provides assistance to farmers for control of tansy ragwort on agricultural lands.

TARGET SERVICE AREA: Roadside vegetation and agricultural lands within the County.

LEVEL OF SERVICE: 2000 shoulder miles will be sprayed during the fiscal period 87-88.

PROVIDERS OF SERVICE: Community Environment operates weed control program.

REVENUE SOURCES ('88-'89):

PERSONNEL/CONTRACTS

Entirely state funded

.2 FTE

STRUCTURE: Community Environment is a section of Operations. Operations is a Division of the Department of Transportation and Development. The Department is accountable to the Chief Executive Officer for administrative purposes. Richard Dopp is the Director of the Division.

LOCATION: Community Environment is located on Abernethy Road in Oregon City.

CONTACT: Richard Dopp at 655-3354.

SURVEYING

ENDANGERED PUBLIC LAND CORNERS
PLAT/CONDOMINIUM REVIEW
FIELD SURVEYING
ROAD STAKING
RECORDS

COUNTY PROVIDERS

MULTNOMAH COUNTY

DEPARTMENT OF ENVIRONMENTAL SERV.

TRANSPORTATION
SURVEY

CLACKAMAS COUNTY

COUNTY SURVEYOR*

DEPARTMENT OF TRANSPORTATION
AND DEVELOPMENT

OPERATIONS

EXISTING JOINT ACTIVITIES

*Elected Official

with no physician but an agreement with the Medical Society to refer clients to private physicians so long as the county spreads out the referrals. But here, as is the case in Juvenile Services, the outside contractors are often the same for both counties.

Suggestions for coordination and cooperation included:

- Continue to work toward a regional information and referral system;
- Develop the means to see that volunteers can be solicited and serve in the area in which they live (eg., Volunteer Bureau is in Multnomah County at United Way);
- Plan for human service programs regionally; and
- Require a county to contact other counties in the region before establishing any new program.

Transportation and Development

There is an interest in finding ways to consolidate road maintenance but policy and management differences remain. Some of the differences concern whether to contract out for paving work -- Multnomah County does, Clackamas does not -- and what type of maintenance schedule should be followed.

Clackamas County actively sells its planning and development expertise, equipment maintenance capabilities and permit services to the other jurisdictions within the County. Multnomah County has basically divested itself of these functions to the cities.

In economic development, Clackamas County has two urban development areas it is promoting. Multnomah County leaves development responsibilities to the cities. The counties are working together on the Oregon Tourism Alliance and light rail projects.

Suggestions for coordination and cooperation included:

- Standardizing land use codes; and
- Creating a single agency for international recruitment.

Assessment and Taxation

Comments generally focused on the difficulty of unifying records, whether the existing data collection systems could merge, deciding who would be in charge, and which method of operation would prevail.

Elections

Counties are working together on registration and get-out-the-vote drives.

It was noted that since their operations are so parallel now, there would be no real advantage to consolidating. Also, their level of services and data processing systems are very different.

CLACKAMAS COUNTY

SERVICE: Surveying

DETAIL: Responsible for preserving all public land corners, registering of all surveyed property, reviewing subdivision plats and condominiums, field surveying and surveying for road construction and maintenance. Maintains all surveyed property maps.

TARGET SERVICE AREA: Registration of all property surveyed in County. 6,400 public land corners are located in the County. There are 1500 miles of road to be maintained in the unincorporated areas of the County.

LEVEL OF SERVICE: During the fiscal period '87-'88 registered and indexed 525 maps and records, processed 19 plats and condominiums and began microfilming process of registered maps. No public land corner maintenance was undertaken.

PROVIDERS OF SERVICE: The County Surveyor provides public information, records management and subdivision reviews. Operations provides surveying for roads.

REVENUE SOURCES ('88-'89):

PERSONNEL/CONTRACTS

County Surveyor: 10% fee supported 3 FTE*

Operations: Included in detail on
Transportation--Maintenance

*Administrative support is included.

STRUCTURE: The County Surveyor is an independently elected official and responsible for the administration of the Survey Office. Operations is a Division of the Department of Transportation and Development. The Department is accountable to the Chief Executive Officer for administrative purposes. The County Surveyor is Thomas Milne. Richard Dopp is the Director of Operations.

LOCATION: The County Surveyor is located on Main Street in Oregon City. Operations is located on Abernethy Road in Oregon City.

CONTACT: Thomas Milne at 655-8606, County Surveyor, and Richard Dopp at 655-8521, Operations.

MULTNOMAH COUNTY

SERVICE: Surveying

DETAIL: Responsible for establishing and maintaining all public land corners, registering all maps of surveyed property, reviewing subdivision plats and condominiums, field surveying and surveying for road construction and maintenance.

TARGET SERVICE AREA: Registration of all maps of surveyed property in the County. There are 528.4 miles of roadways in the unincorporated areas of the County.

LEVEL OF SERVICE: For the fiscal period 87-88, it was anticipated that work hours spent on the following activities would reach: 11,510 responding to public inquiries; 2,088 reviewing subdivisions; 1,670 recording and indexing maps; 10,400 maintaining public land corners; 6,260 surveying for capital projects and 4,180 staking for such projects; 1,040 maintaining street monuments; and 1,044 maintaining right-of-way archive.

PROVIDERS OF SERVICE: Survey provides all services directly.

REVENUE SOURCES ('88-'89):

Supported 61% by real estate transfer tax and road fund with the balance of support split between county general funds and other funds.

PERSONNEL/CONTRACTS

13 FTE

STRUCTURE: Survey is a section of the Transportation Division of the Department of Environmental Services. The Department is accountable to the County Chair for administrative purposes. Larry Nicholas is the Director of the Division and Dennis Fantz is the County Surveyor.

LOCATION: Survey is located at the John Yeon Shops, Vance Center, on S.E. 190th in Gresham.

CONTACT: Dennis Fantz at 248-3600.

PLANNING AND ADMINISTRATIVE SUPPORT

SURVEYING

MULTNOMAH COUNTY

Within the Department of Environmental Services, where Transportation (and, thus, Survey) is located, there is a separate administrative section, with a staff of 7.80 FTE providing overall management and policy direction to the entire Department, as well as financial management and operations of various project funds, which is funded 22% by road fund, 36% county general fund and 42% by other funds.

TAX SUPERVISING AND CONSERVATION COMMISSIONER

Reviews, coordinates and supervises the budgeting and taxing activities of local governments within a county.

COUNTY PROVIDERS

MULTNOMAH COUNTY

Mandated by state statute for counties with population over 300,000. Governor appoints Commissioners who, in turn, appoint staff. Attorney General is legal counsel and annual operating expense is set by the state legislature.

CLACKAMAS COUNTY

TRANSPORTATION AND PUBLIC WORKS

PLANNING
ENGINEERING
CONSTRUCTION
TRAFFIC CONTROL
MAINTENANCE

COUNTY PROVIDERS

MULTNOMAH COUNTY

DEPARTMENT OF ENVIRONMENTAL SERV.
TRANSPORTATION

CONTRACTORS

*Public Works are the
responsibility of the cities
within their service areas.

CLACKAMAS COUNTY

DEPARTMENT OF TRANSPORTATION AND
DEVELOPMENT

PLANNING AND ECONOMIC DEVELOPMENT
OPERATIONS

CONTRACTORS

JOINT EXISTING ACTIVITIES

JEFFERSON STREET RAIL LINE CORRIDOR
EASTSIDE LIGHT RAIL TRANSIT

CLACKAMAS COUNTY

SERVICE: Transportation and Public Works -- Planning and Construction Management.

DETAIL: Develops and coordinates transportation and public facilities projects (such as storm drainage, water and sanitary sewerage systems), including planning, engineering, environmental impact statements, construction management and federal grant administration within the County's Urban Growth Boundary. Provides contract traffic-related services, public works planning, engineering and grant assistance to the cities as requested.

TARGET SERVICE AREA: There are approximately 1800 square miles within the County, including federal forest land.

LEVEL OF SERVICE: For the fiscal period 88-89, exclusive of coordination, grant management and long range planning efforts, special projects will include: Design and environmental work on Highway 224 Extension (Sunrise Corridor Phase 1), I-205 to Hwy. 212; Highway 224 grade separated interchange; I-205 Light Rail Transit, Port of Portland to Clackamas Town Center; and Causey (or Monterey) overpass over I-205. Complete construction work on: 82nd Drive/Evelyn; Lester interchange; I-205/Sunnyside interchange ramp widening; and Synnyside Road frontage road removal, 82nd Ave. to I-205. Value of construction management projects totals \$51,000,000. Value of grants awarded totals \$66,000,000.

PROVIDERS OF SERVICE: Planning and Economic Development provides all services directly, except the actual construction of projects which is contracted out under bid. Participating with other jurisdictions, including Multnomah County, in preservation of the Jefferson Street Rail Line Corridor.

REVENUE SOURCES ('88-'89):

*4% state/federal
58% county general fund
38% other

PERSONNEL/CONTRACTS

16 FTE approximately and
10 contracts related to large
projects

STRUCTURE: Planning and Economic Development is a Division of the Department of Transportation and Development. The Department is accountable to the Chief Executive Officer for administrative purposes. Winston Kurth is the Executive Director of the Department. Tom VanderZanden is the Director of the Division.

LOCATION: Planning and Economic Development is located on Abernethy Road in Oregon City.

CONTACT: Tom VanderZanden at 655-8521.

CLACKAMAS COUNTY

SERVICE: Transportation -- Maintenance

DETAIL: Maintains transportation system, including the inspection and maintenance of 200 bridges, operation of the Canby Ferry, traffic control signs, markings and electric signalization, and resurfacing and general maintenance of county's roadways. Provides contract services, such as road striping, traffic sign, installation and maintenance to cities (as requested) and within the Mt. Hood National Forest. Developing a computerized pavement management system.

TARGET SERVICE AREA: There are approximately 1500 miles in the County's transportation system, exclusive of services they provide by contract with the cities and the Forest Service.

LEVEL OF SERVICE: For the fiscal period 88-89, the County expects to: resurface 450 miles of county roadway, maintain 851 miles of shoulders, grade 828 miles with gravel, maintain 615 miles of drainage channel and mow 1200 miles of roadsides. Further projects include: maintaining 32 traffic signals and beacons, replacing 37 traffic signs, centerline striping for a total of 1,373 miles, inspecting 100 bridges and repairing 70 smaller ones and 1 major bridge, and operating the Canby Ferry for 340 days.

PROVIDERS OF SERVICE: Operations provides nearly all services directly including surfacing and resurfacing of roads and manufacture of traffic signs. Contracted services include construction of capital projects and contracted maintenance.

REVENUE SOURCES ('88-'89):

PERSONNEL/CONTRACTS

Primarily road fund & other
fund supported.

161 FTE and 25 contracts

STRUCTURE: Operations is a Division within the Department of Transportation and Development. The Department is accountable to the Chief Executive Officer for administrative purposes. Winston Kurth is the Executive Director of the Department. Richard Dopp is the Director of the Division.

LOCATION: Operations is located on Abernethy Road in Oregon City.

CONTACT: Richard Dopp at 655-8521.

MULTNOMAH COUNTY

SERVICE: Transportation -- Planning and Maintenance

DETAIL: Responsible for planning, engineering, construction and maintenance of the County's surface bridge and street system, including preservation of the County's bicycle system. Provides funding to the City of Portland to complete improvements of certain roadways in the County. Services also include traffic engineering, signal maintenance, striping and sign manufacture.

TARGET SERVICE AREA: As of January, 1988, the County is responsible for maintain 528.4 miles of roadways in the unincorporated areas of the County, as well as an addition 199 miles within the cities. The bicycle system is primarily the 40 mile loop. There are ___ bridges in the Willamette River Bridge system for which the County is responsible.

LEVEL OF SERVICE: For the fiscal period 87-88, it was anticipated that the cost of transportation projects designed would be \$14,313,000 and projects completed \$8,603,000; engineering hours on petition streets, right of way and planning would total 8,020; 600 feet of lineal road would be constructed under street petition; 7 miles of asphalt overlap, 19 miles of oil resurfacing, as well as routine sealing, patching, sweeping, potholing and mowing were planned. Further work to be undertaken included striping 1,250 lane miles, removing or installing 2,800 traffic signs and manufacturing 8,500 square feet of traffic signs.

PROVIDERS OF SERVICE: Transportation provdes planning, engineering and maintenance of most systems except that all paving is contracted for with the Association of General Contractors and construction of new streets is contracted out under bid. Transportation manufactures signs for the County and the city of Troutdale. Participates with other jurisdictions, including Clackamas County, in the preservation of the Jefferson Street Rail Line Corridor.

REVENUE SOURCES ('88-'89):

PERSONNEL/CONTRACTS

Primarily road fund & other funds supported.

150 FTE and ___ contracts

STRUCTURE: Transportation is a Division of the Department of Environmental Services. The Department is accountable to the County Chair for administrative purposes. Paul Yarborough is the Director of the Department. Larry Nicholas is the County Engineer and Director of Transportation Division.

LOCATION: Transportation is located in the John Yeon Shops, Vance Center, on S.E. 190th in Gresham.

CONTACT: Larry Nicholas at 248-5050.

PLANNING AND ADMINISTRATIVE SUPPORT

TRANSPORTATION & PUBLIC WORKS

CLACKAMAS COUNTY

Within the Planning and Economic Development Division, there is a separate administrative section supporting the activities of the entire Division with a staff of 3 FTE and funded primarily by county general funds.

Within the Operations Division, there is a separate administration section with a staff of 16 FTE which supports the activities of the entire Department of Transportation and Development with funding from the road fund.

Within the Department of Transportation and Development, where Operations and Planning and Economic Development are located, there are 10 support staff providing general overhead support to the entire Department, funded by the road fund.

MULTNOMAH COUNTY

Within the Department of Environmental Services, where Transportation is located, there is a separate administrative section, with a staff of 7.80 FTE providing overall management and policy direction to the entire Department, as well as financial management and operations of various project funds, which is funded 22% by road fund, 36% county general fund and 42% by other funds.

VETERANS SERVICES

REFERRAL
CASE MANAGEMENT
TECHNICAL ASSISTANCE

COUNTY PROVIDERS

MULTNOMAH COUNTY

**Regional Office of the
Veterans Administration
in downtown Portland
provides certain veterans
assistance.

CLACKAMAS COUNTY

VETERANS SERVICE OFFICE

EXISTING JOINT ACTIVITIES

CLACKAMAS COUNTY

SERVICE: Veterans Services

DETAIL: Provides information and assistance to veterans and their families in applying for government benefits. Advocates on behalf of veterans and their families before policy making public bodies.

TARGET POPULATION: All residents of the County as well as some residents in Tualatin, N.E. and S.E. Portland, and Gresham

LEVEL OF SERVICE: Serves approximately 35,000 veterans and their families; daily office visits run between 15 and 20; and provides benefits' assistance in over 24 programs.

PROVIDERS OF SERVICE: Veterans Service Office provides all services directly.

REVENUE SOURCES ('88-'89):

PERSONNEL/CONTRACTS

16% state/federal
84% county general fund

2.5 FTE

Administration is included above.

STRUCTURE: The Veteran Services Office is a separately functioning office responsible for its own administration. Mary Newman is the Veterans Service Officer.

LOCATION: The Office is located on Main Street in Oregon City.

CONTACT: Mary Newman at 655-8620

COMMENTS

The following is a summary of the comments I received from staff interviews about existing joint activities, suggestions for further coordination, and views about consolidation of county functions.

In General

In nearly all instances, the difference in the nature of the problems facing each County was raised as an impediment to consolidation of functions. Following that concern, the differences in management philosophy was most often repeated as a stumbling block.

In summary, the difference in the nature of the problems stems from these basic factors: Multnomah County is an urban county with a large population in a small land area dominated by a large city, and Clackamas County is a suburban/rural county with less population spread over a large land area with many small cities. These factors impact on a whole host of other areas, such as type and incidence of crime, provision of municipal services, and demand for human services.

Management philosophy differences, while unique to each department, often reflected the preference for providing the service directly or contracting with an outside agency to provide the service.

To a person, professional associations were named as the single consistent platform for working together across county lines. Associations offer the opportunity to share information, to discuss common problems, and promote legislative and administrative changes to improve operations and service delivery.

Concerns about METRO "taking over" a service function was voiced often --- more so in Clackamas County where METRO is perceived as trying to replace or dominate local governments. Other concerns about METRO had to do with the its lack of credibility and difficulty of communicating with other governments in the region.

Nevertheless, there was the recognition that service needs do cross political boundaries and that planning regionally would benefit both counties.

Criminal Justice

In the area of law enforcement both counties pointed out that they work across jurisdictional boundaries on a regular basis. As shown in the service detail section, both counties are involved in a variety of task forces and initiatives to prevent, investigate and prosecute crime in the region. Mutual Aid, among the Sheriff's departments and other emergency service providers in the region, is an accepted practice.

Crime data collection was mentioned as an obvious area offering opportunities for using a unified system. However, past history has built a situation where a great deal of investment has gone into developing separate systems and there remains a lingering antagonism

over previous efforts at developing a single system. Apparently, the system the State Court is developing may be the means of coordinating data among the counties.

Another area mentioned was the need to be able to communicate on the same radio frequency.

Both counties pointed to the differences in the nature and magnitude of crime. By example, one-third of the crimes in Clackamas relate to meth labs and growing marijuana, whereas crimes against persons is much higher in Multnomah County.

It was commented that the District Attorney function could operate under one administration region-wide with local branches throughout the counties because the functions are the same.

The whole area of community corrections is handled differently in each county with Clackamas choosing Option I and Multnomah choosing Option II under the Community Corrections Act. Complicating any consideration of improved coordination is the dispute over "transfers," which apparently is being resolved.

Juvenile Services

The three counties now share a juvenile tracking system and all three use the Donald E. Long Detention Facility. Also there are exchanges among the counties on training and jobs for youths. There are also projects on a regional basis, which the state (JJAC) funds that involves the non-profit agencies as well as the three counties. Also, non-profit agencies, such as Boys and Girls Aid Society, are providing services under contract to both counties. Both counties agreed the State should divest parole to the counties.

The reaction, however, to further cooperative efforts, or a consolidation of activities, was rather lukewarm. Clackamas feels very strongly that their problems are different, their solutions are better, and that Multnomah County would dominate any relationship forcing a diminution of the service they now provide. The issue of the difficulty of serving the areas at the border, like Sandy, was raised. Where Sandy is concerned residents are entitled to programs offered at Clackamas Community College, but they live in the Mt. Hood Community College District.

Human Services

Both counties reciprocate in the placement of the homeless. Food bank efforts, family planning, forensic pathology, and housing alternatives are other areas of joint activity.

However, both counties are remarkably different in how they provide services and both are quick to point this out. As an example, while Clackamas provides most mental health services directly, Multnomah County contracts out its services, and, while Multnomah County operates over five clinics providing primary care, Clackamas operates a clinic

Other Services

Merger of all three counties is regarded as feasible for Animal Control. All four metropolitan counties are now discussing a regional lost and found for pets.

Both Parks Departments pointed to the METRO project as a coordinated effort to look at parks and parks planning. (METRO is mapping all open spaces in the region, both public and private.)

Community Development in Clackamas spoke of the cooperative effort with PDC, as banker, that has helped the agency with housing rehabilitation loans.

While Purchasing was viewed as an area that could be centralized, the ability of local governments to tag on to state bids makes it less attractive.

Common data processing functions connected with Assessment and Taxation, the general ledger and payroll systems could be combined. However, any integration of data processing depends on compatible systems.

In the area of Finance, it was pointed out that 1) the law forbids pooling money, and 2) there are different cash flow needs and investment policies in the two counties.

One official suggested that 911 should be a regional service.

Another official suggested the formation of a Super Task Force of all city and county commissioners to develop a regional agenda.