

# **Changing Demographics**

**Multnomah County: 2000-2008**

**Lillian Shirley, Director  
Health Department**

**Joanne Fuller, Director  
Department of County Human Services**

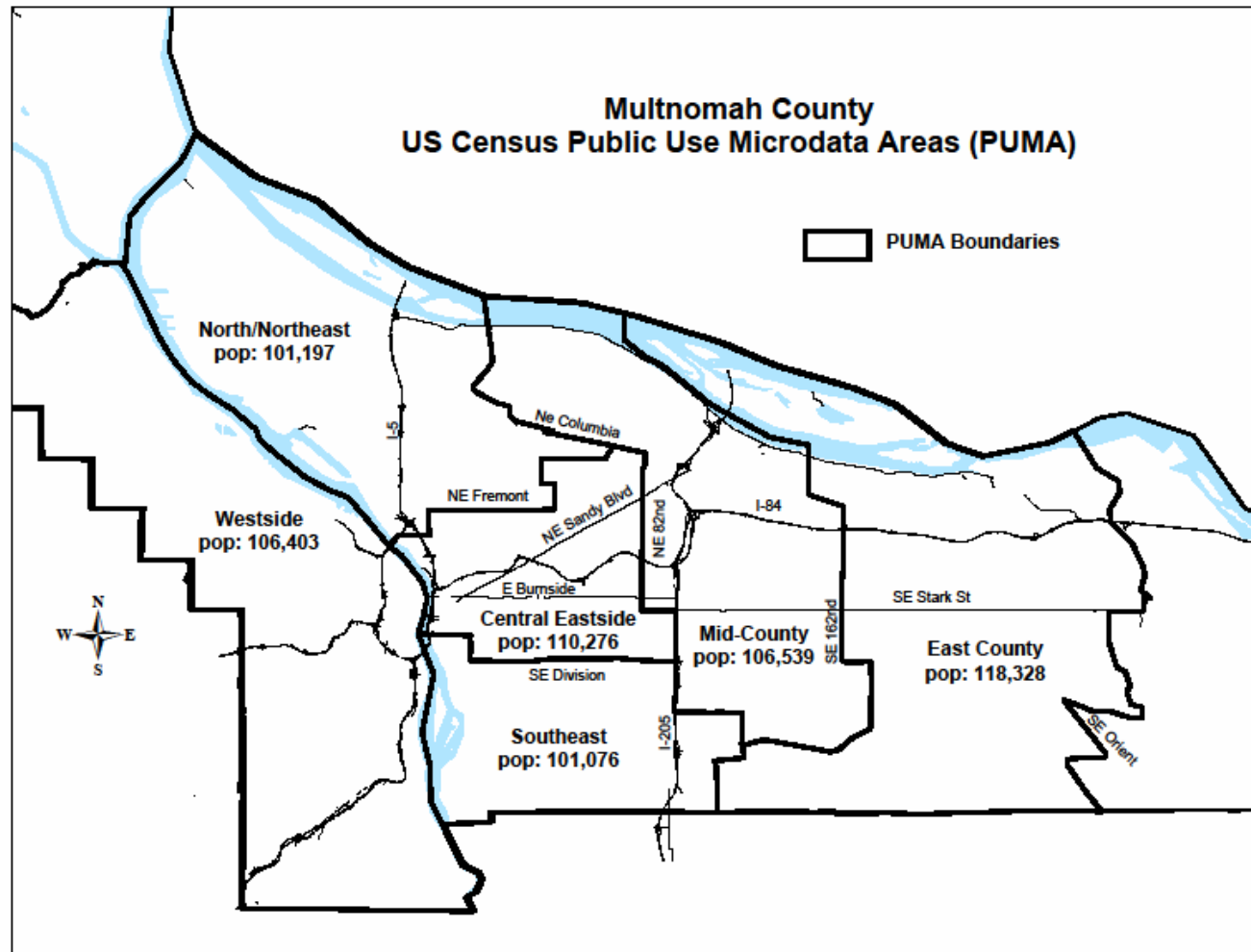


## Perception is Reality

- ❑ Percent of population below 100% and 200% of poverty
- ❑ Children and Older Adults living below 100% of poverty
- ❑ Adults with Disabilities living in poverty
- ❑ Population by race/ethnicity by area
- ❑ Reduced or Free Lunch Program
- ❑ Health insurance coverage
- ❑ Service Sites
- ❑ Verity enrollees

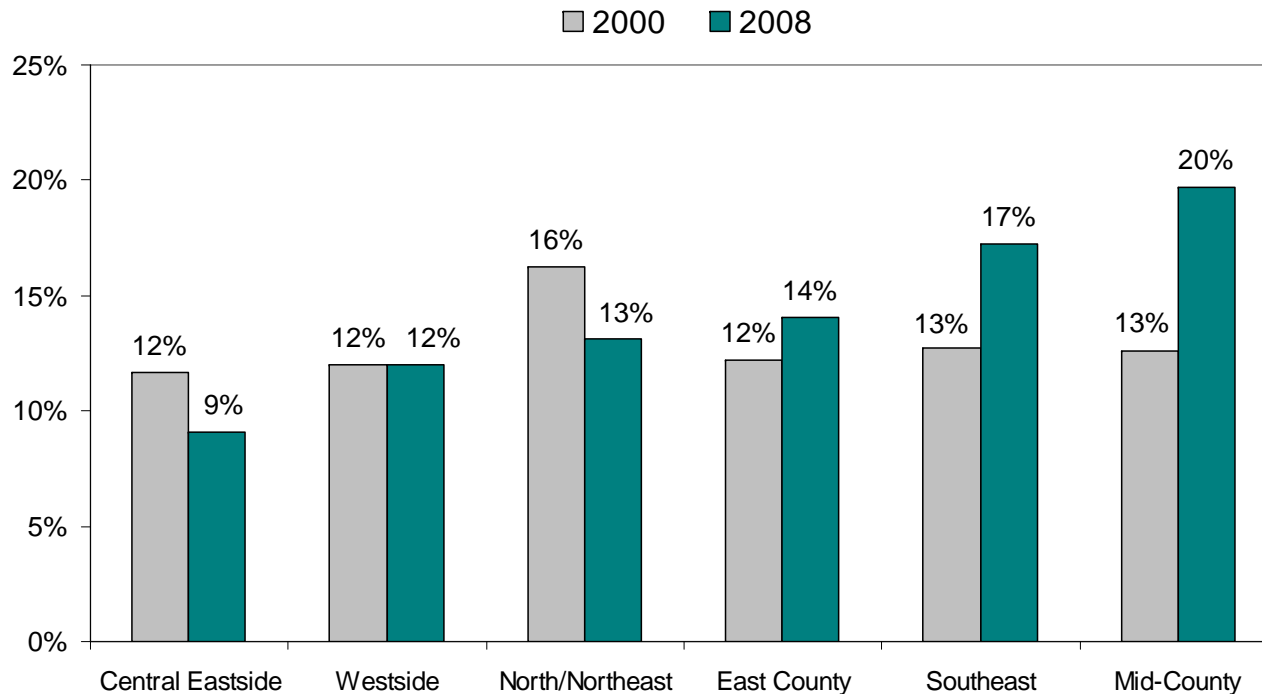
# 2008 Population

## US Census Public Use Microdata



# At or Below 100% of Poverty

**Percent of Population At or Below 100% of the Federal Poverty Level  
Multnomah County**



Source: US Census, American Community Survey

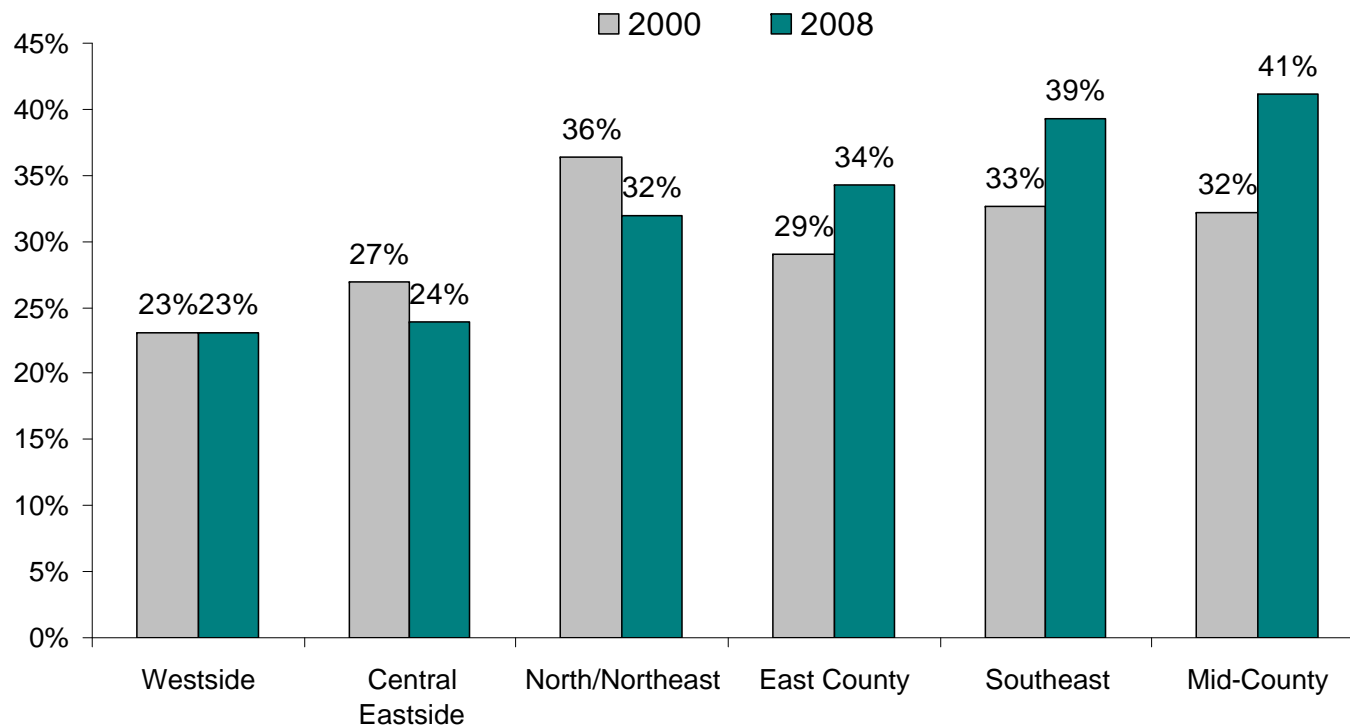
# of People	Central Eastside	Westside	North/ Northeast	East County	Southeast	Mid-County
2000	12,684	12,240	16,012	14,151	12,673	12,939
2008	10,216	14,544	12,385	19,362	17,331	22,659



Changing Demographics in Multnomah County

# Below 200% of Poverty

**Percent of the Population Below 200% of the Federal Poverty Level  
Multnomah County**



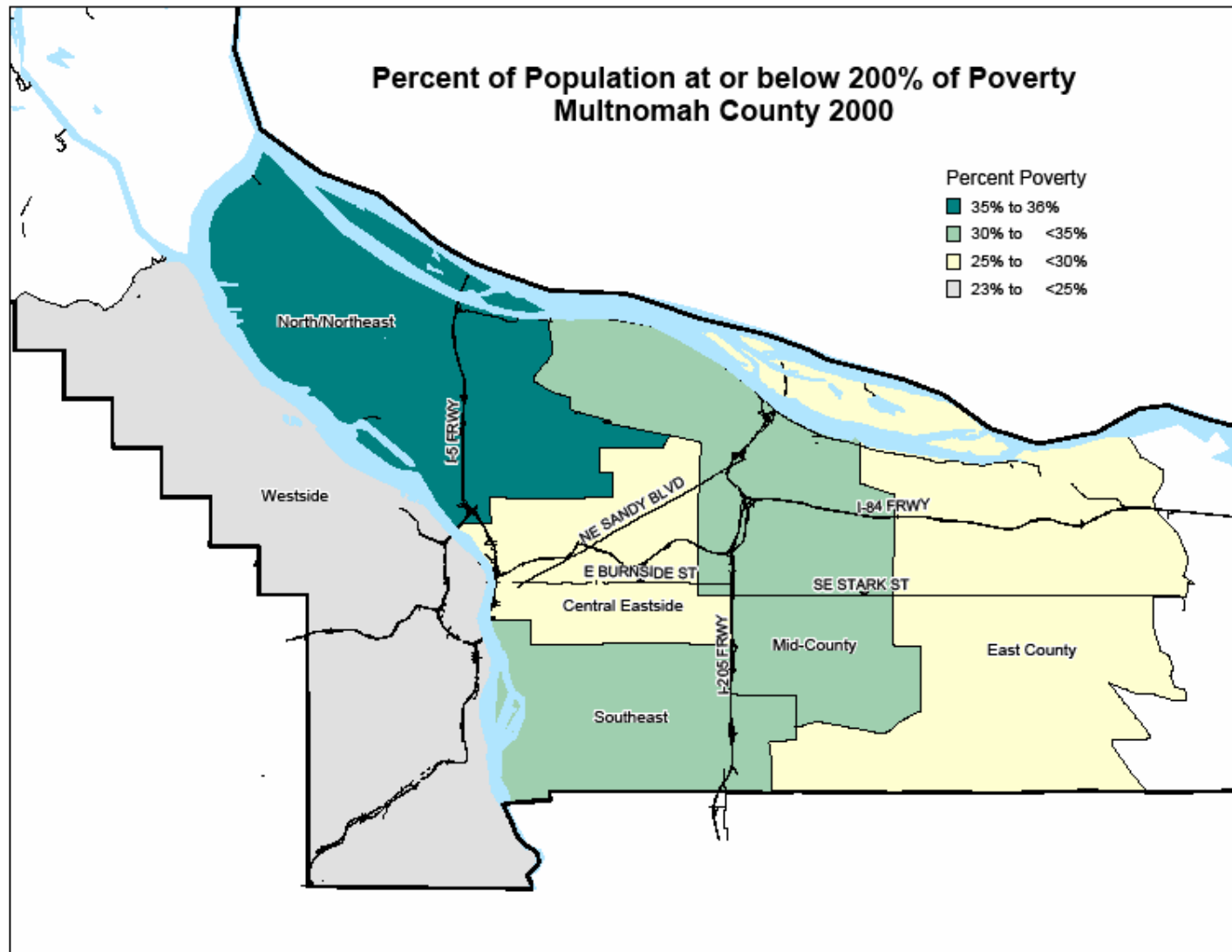
Source: US Census, American Community Survey

# of People	Westside	Central Eastside	North/ Northeast	East County	Southeast	Mid-County
2000	23,794	29,201	35,971	33,743	32,471	33,034
2008	26,953	26,800	30,174	47,106	39,415	47,375

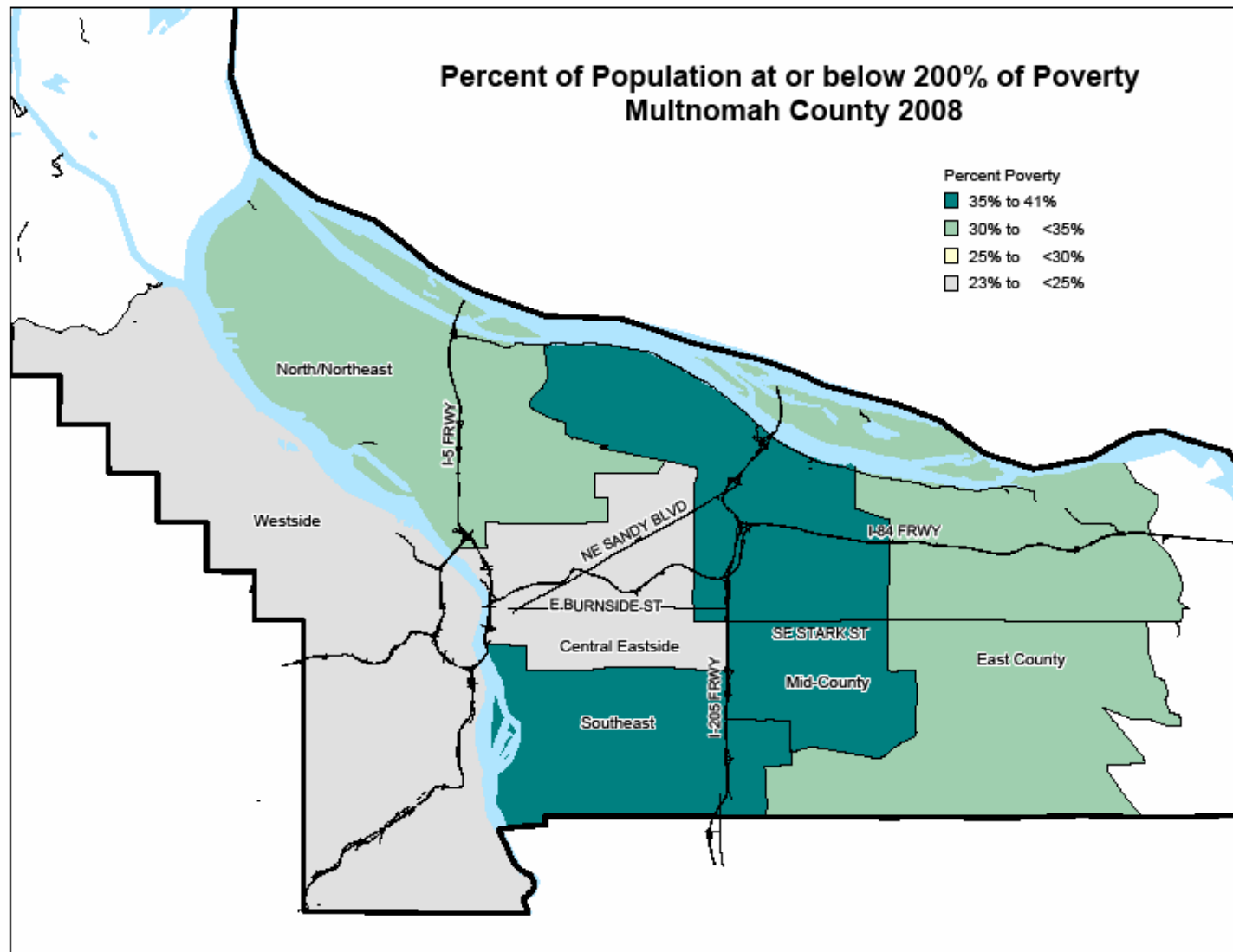


Changing Demographics in Multnomah County

# Below 200% Poverty 2000



# Below 200% Poverty 2008



## Some are More Mobile than Others

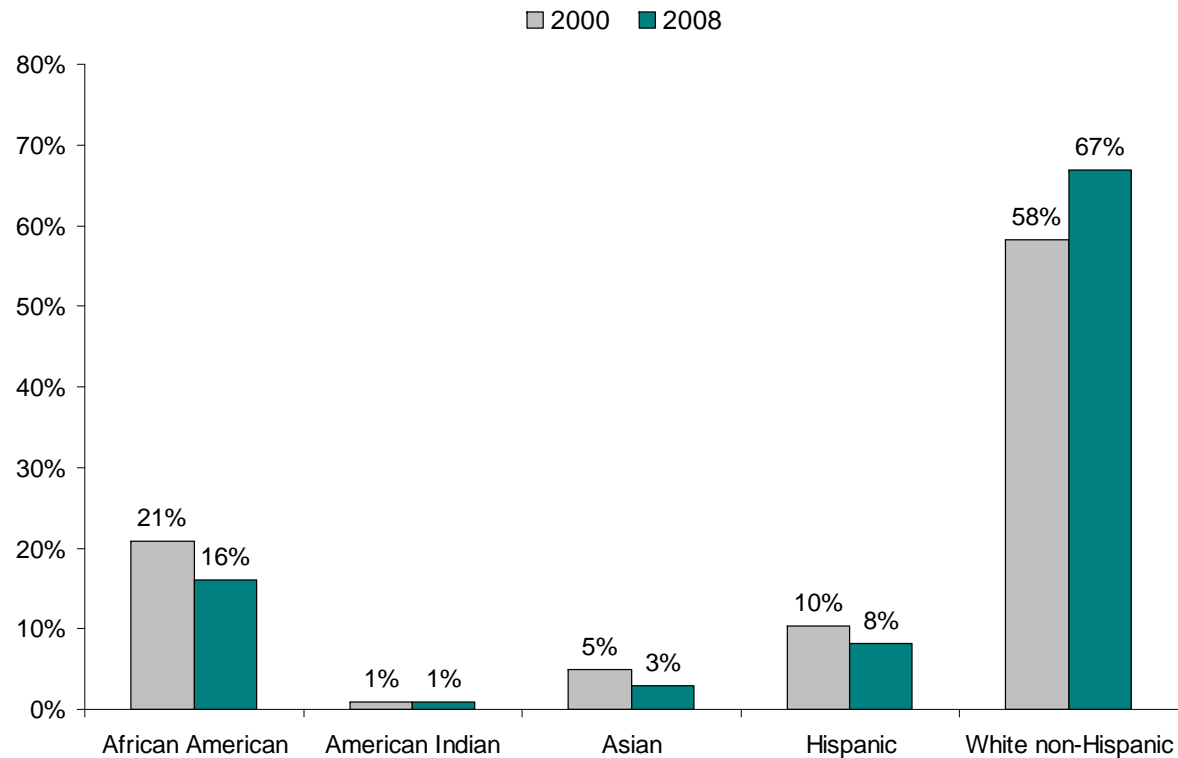
---

- Who is moving?
- Why are they moving?



# Population by Race/Ethnicity: North/Northeast

Population by Race/Ethnicity: North/Northeast  
Multnomah County 2000 and 2008



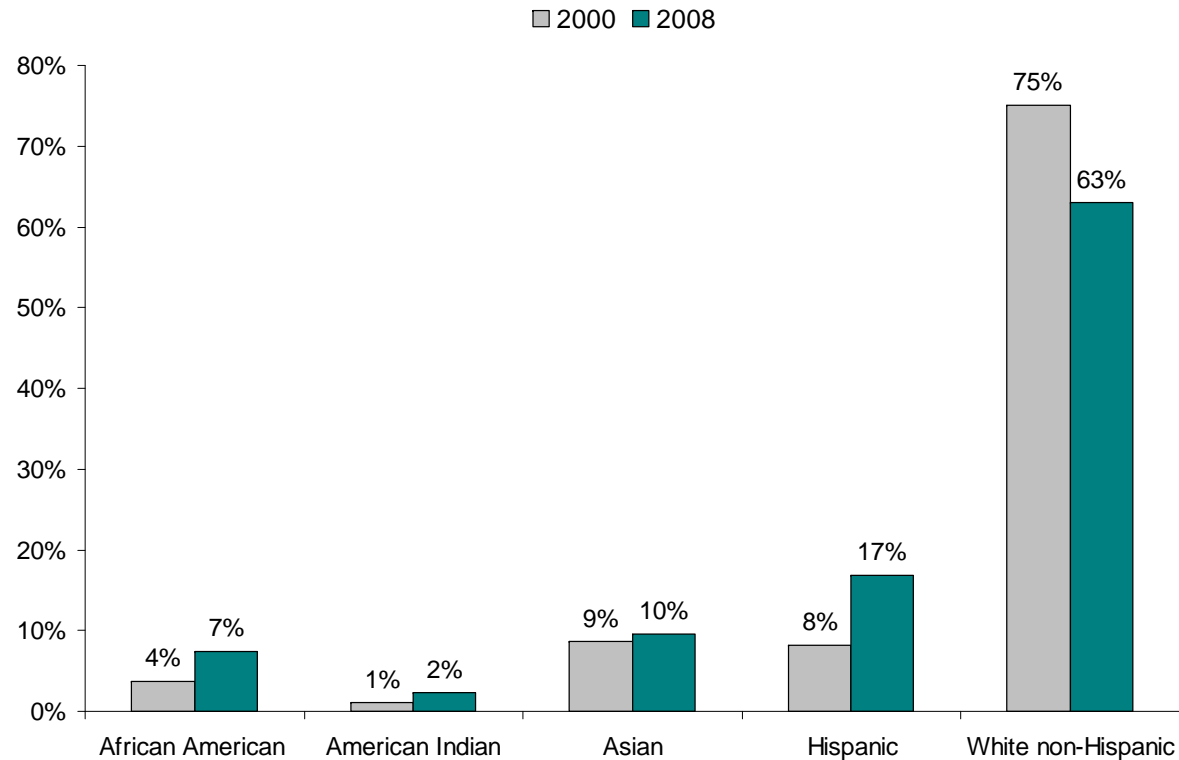
Source: US Census, American Community Survey

# People	African American	American Indian	Asian	Hispanic	White non-Hispanic
2000	21,037	1,508	4,952	10,426	58,885
2008	15,557	851	2,873	7,927	64,748
Change	-5,480	-657	-2,079	-2,499	5,863

Changing Demographics in Multnomah County

# Population by Race/Ethnicity: Mid-County

Population by Race/Ethnicity: Mid-County  
Multnomah County 2000 and 2008

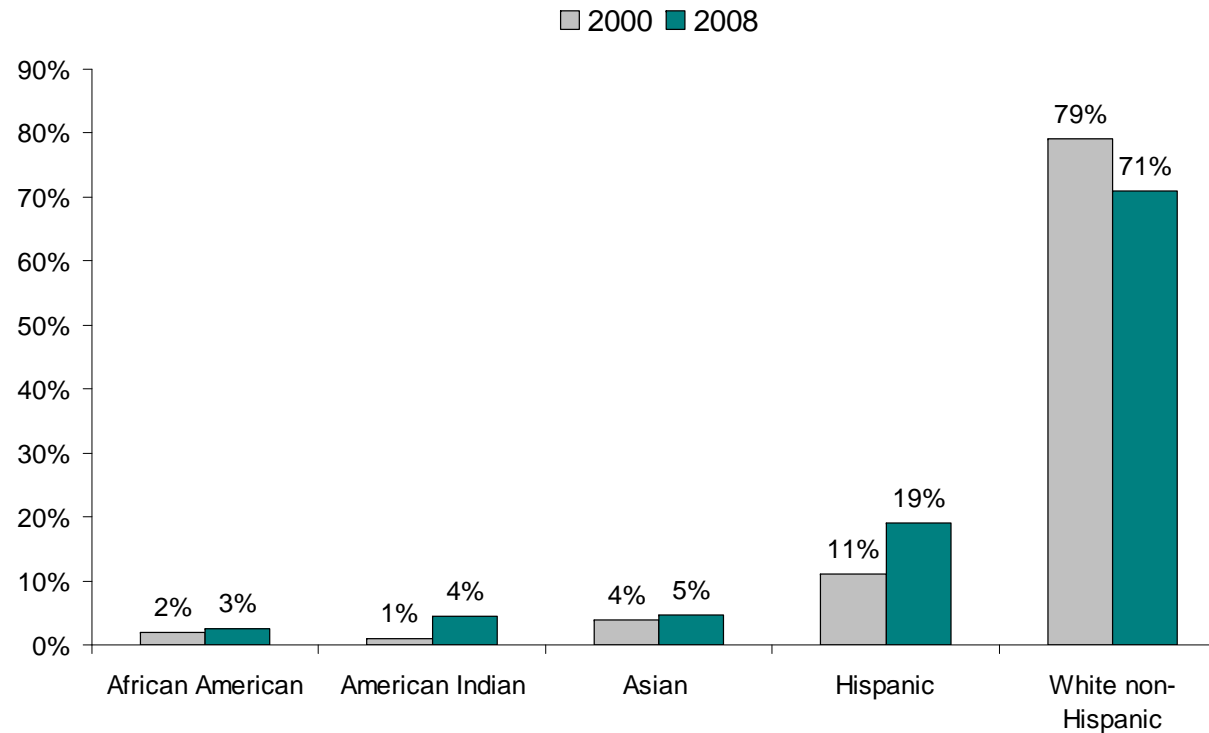


Source: US Census, American Community Survey

# People	African American	American Indian	Asian	Hispanic	White non-Hispanic
2000	3,910	1,129	9,267	8,761	80,032
2008	8,872	2,704	11,580	20,322	75,711
Change	<b>4,962</b>	<b>1,575</b>	<b>2,313</b>	<b>11,561</b>	<b>-4,321</b>

# Population by Race/Ethnicity: East County

Population by Race/Ethnicity: East County  
Multnomah County 2000 and 2008

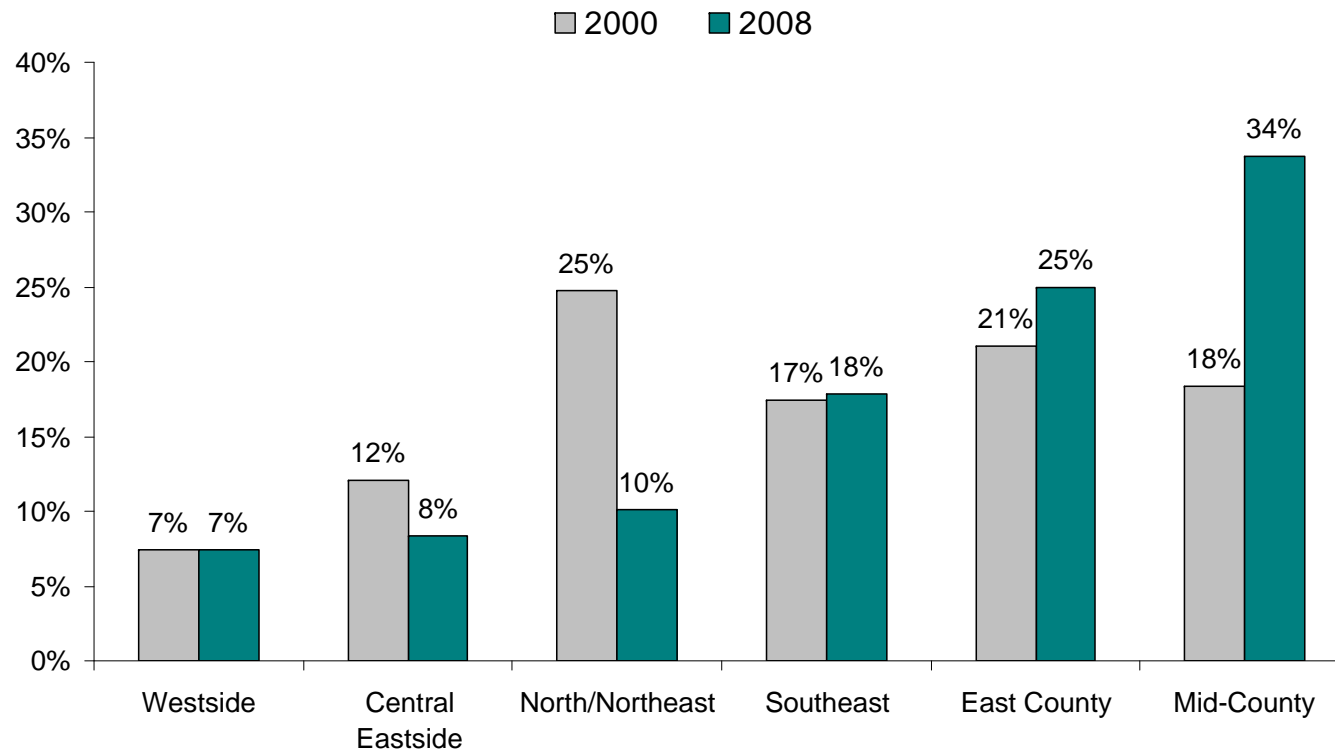


Source: US Census, American Community Survey

# People	African American	American Indian	Asian	Hispanic	White non-Hispanic
2000	2,315	1,096	4,702	13,162	93,564
2008	3,647	6,179	6,547	26,407	98,764
Change	<b>1,332</b>	<b>5,083</b>	<b>1,845</b>	<b>13,245</b>	<b>5,200</b>

# Children Younger than Age 5 in Poverty

## Children Younger than Age 5 in Poverty Multnomah County



Source: US Census, American Community Survey

# Children	Westside	Central Eastside	North/ Northeast	Southeast	East County	Mid-County
2000	313	690	1,747	1,090	1,951	1,350
2008	546	681	653	1,017	2,745	3,388
Change	<b>233</b>	<b>-9</b>	<b>-1,094</b>	<b>-73</b>	<b>794</b>	<b>2,038</b>

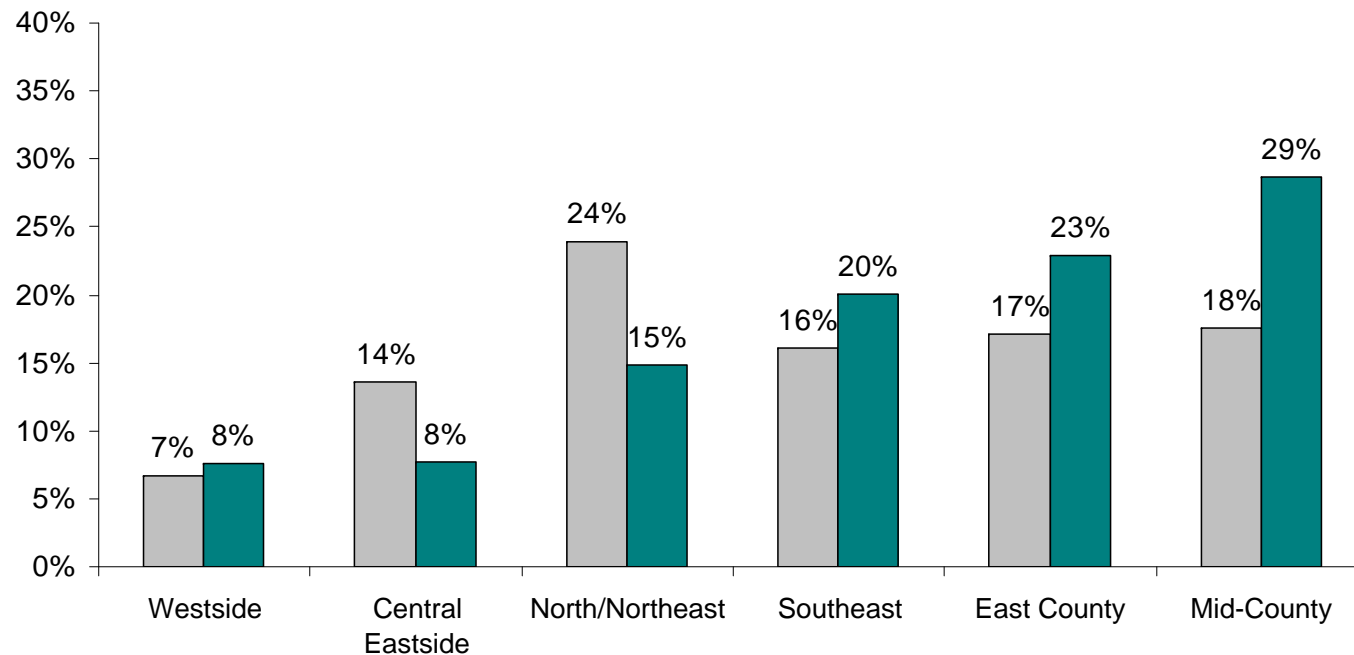


Changing Demographics in Multnomah County

# Children Younger than 18 in Poverty

## Children Younger than Age 18 at or below 100% Poverty Multnomah County

■ 2000 ■ 2008



Source: US Census, American Community Survey

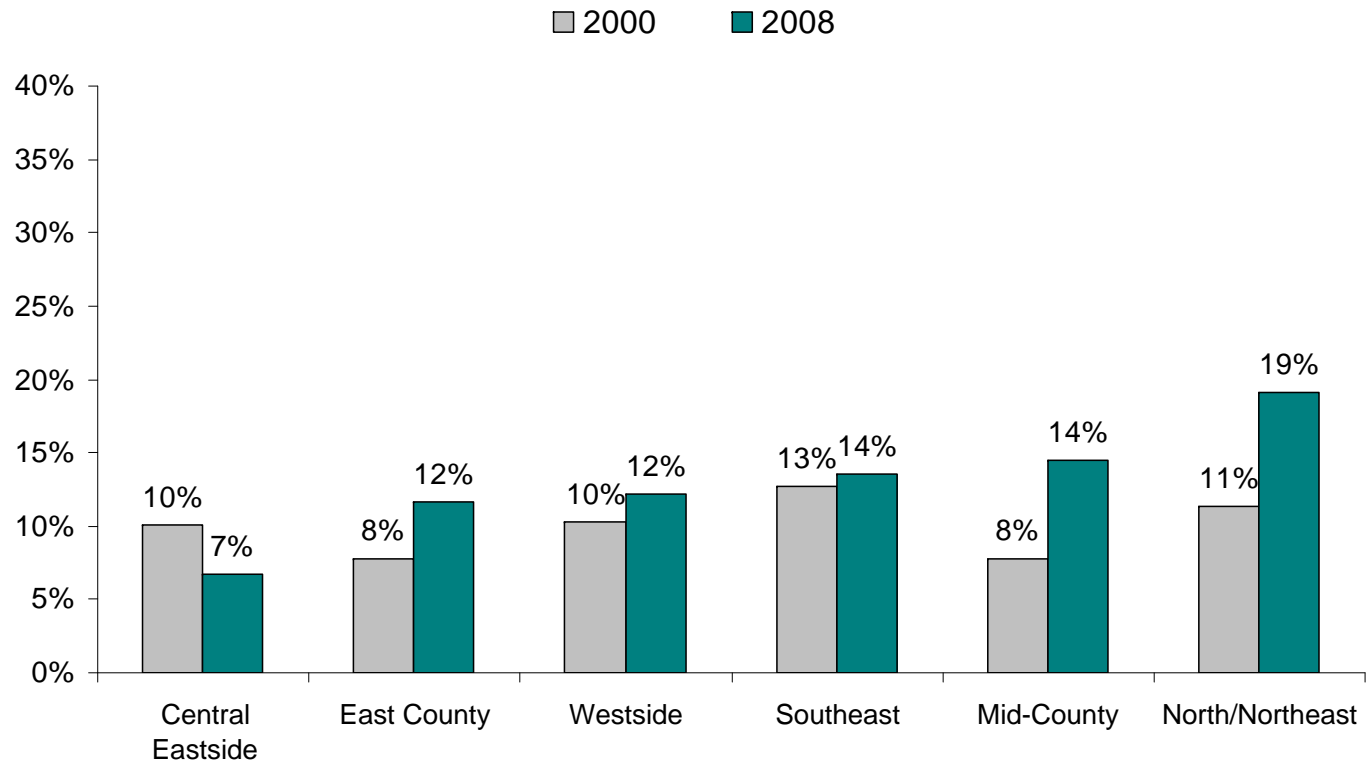
# Children	Westside	Central Eastside	North/Northeast	Southeast	East County	Mid-County
2000	1,098	2,684	5,756	3,398	5,385	4,539
2008	1,715	1,752	3,023	4,141	8,996	8,224
Change	617	-932	-2,733	743	3,611	3,685



Changing Demographics in Multnomah County

# Adults 65 and older in Poverty

## Adults Age 65 and older at or below 100% Poverty Multnomah County

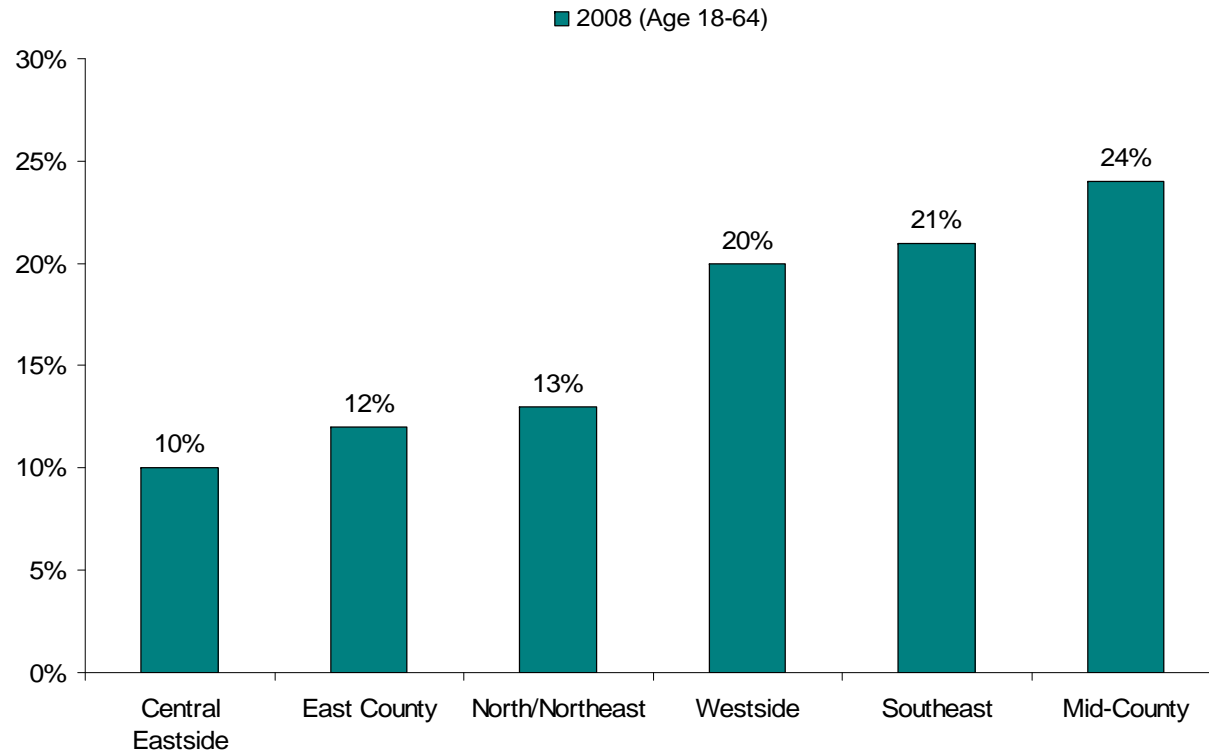


Source: US Census, American Community Survey

# Adults	Central Eastside	East County	Westside	Southeast	Mid-County	North/Northeast
2000	1,159	830	1,187	1,428	1,157	1,089
2008	655	1,475	1,609	1,369	2,092	1,439
Change	<b>-504</b>	<b>645</b>	<b>422</b>	<b>-59</b>	<b>935</b>	<b>350</b>

# Population with a Disability Living in Poverty

Percent of Population with a Disability Living Below the Federal Poverty Level, Multnomah County



Sources: 2008 American Community Survey (Age group is 18-64 years)

# Adults	Central Eastside	East County	North/ Northeast	Westside	Southeast	Mid-County
2008	1,324	1,573	1,700	2,589	2,696	3,110







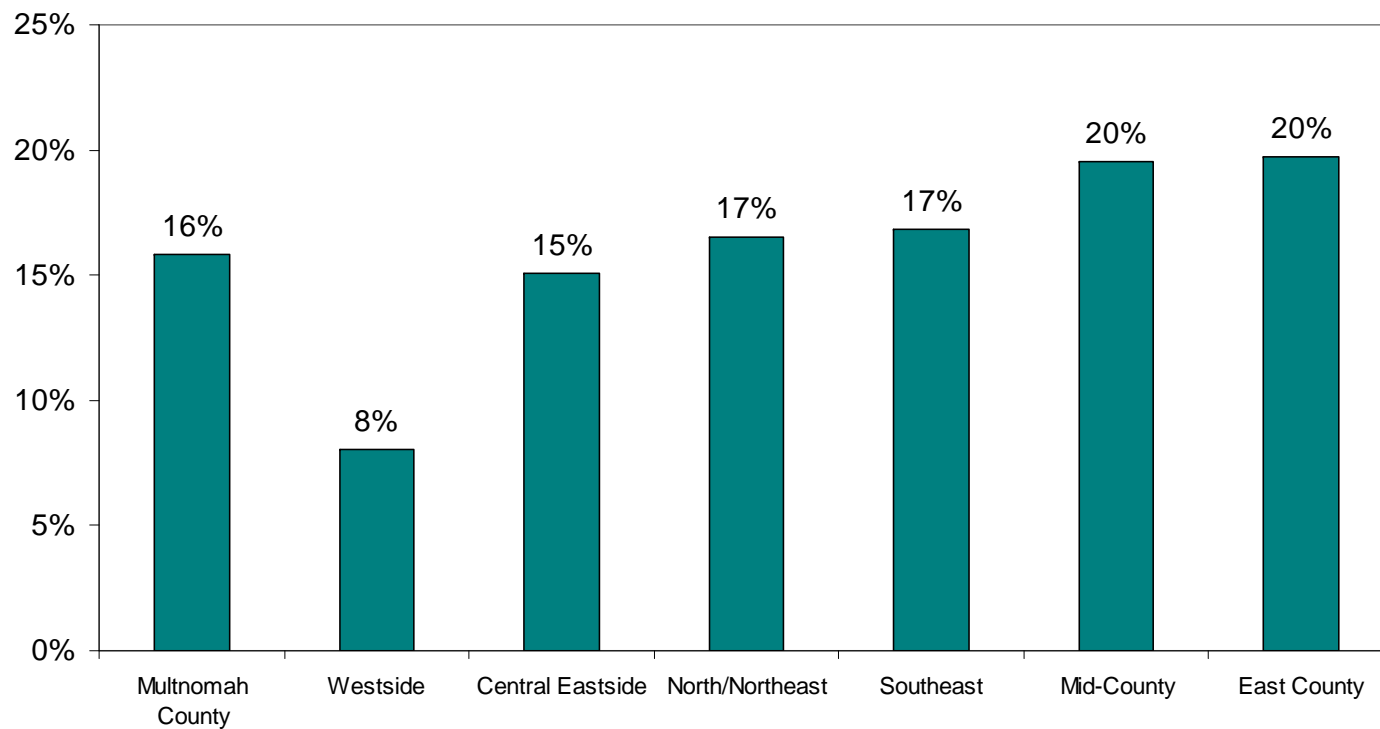
Age Group	Percentage
18-24	10%
25-34	20%
35-44	30%
45-54	25%
55-64	15%
65-74	10%
75-84	5%
85+	5%



## Changing Demographics in Multnomah County

# Percent Uninsured by Health Insurance

**Health Insurance Coverage (Percent Uninsured) by Area  
Multnomah County 2008**



Source: American Community Survey



## Why are people moving?

---

“As gentrification has happened, poverty has moved out here. Some services have moved, but they are not moving out here as fast as the people. Look what gentrification has done to community cohesion.” (Participant in discussion group following screening of *Unnatural Causes: Is Inequality Making Us Sick*, May 2008)

“So what happens? I live out in Gresham, but I work over here and my church is over here (Northeast Portland), and my mom lives out here. It becomes more and more difficult for me to really get to the resources that I feel comfortable with.” (Participant of Healthy Birth Initiative’s focused group discussions with housing and employment professionals, August 2008)

## Why are people moving?

---

“One of the biggest housing needs we have in this city is actually for single moms needing permanent housing. We have seen an increase the last couple of years of homeless mothers in the city of Portland, because they can’t find affordable housing or they get into a domestic violence situation.” (Participant of Healthy Birth Initiative’s focused group discussions with housing and employment professionals, August 2008)

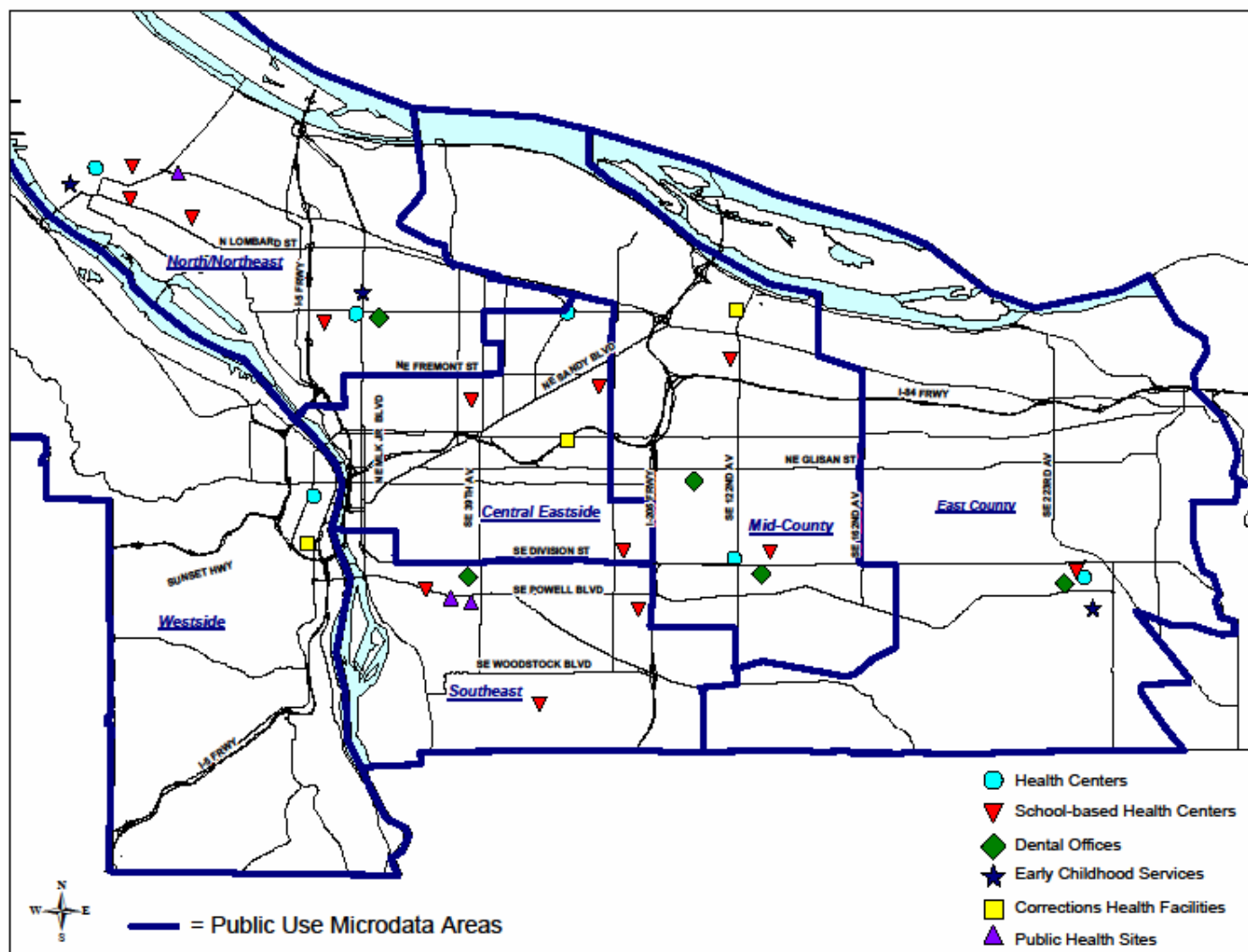
“Most of the family housing now is in the apartment setting and is going to be in East Portland. I mean the reality is that it’s harder and harder to find any affordable single-family housing west of 82nd.” (Participant of Healthy Birth Initiative’s focused group discussions with housing and employment professionals, August 2008)

## What and Where are the Gaps?

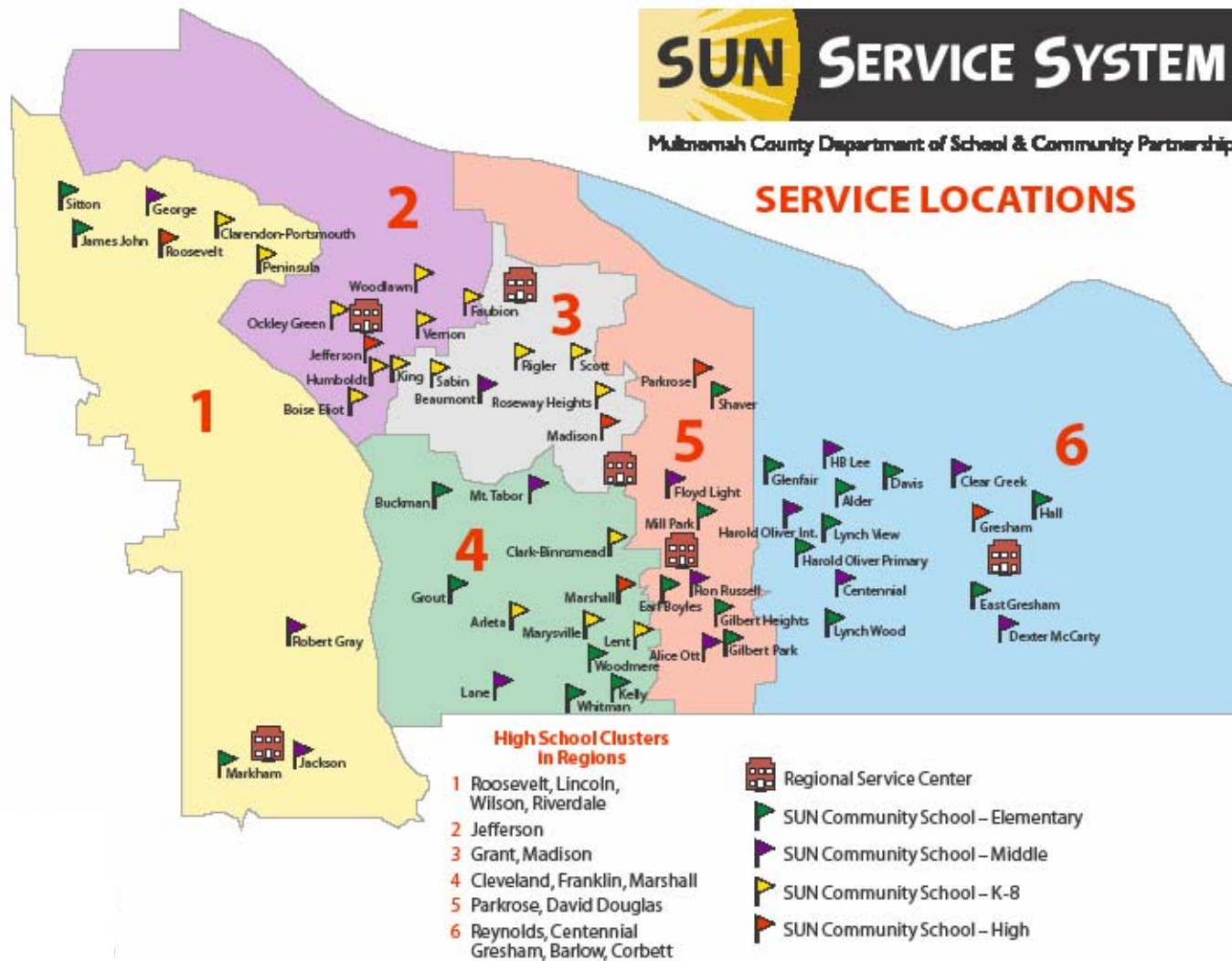
---

- ❑ What is out there now in terms of services?
- ❑ What kind of services, supports and community amenities do we anticipate the people who are moving will need? In general, and from the County?
- ❑ Where are there gaps?

# Multnomah County Health Department Service Sites



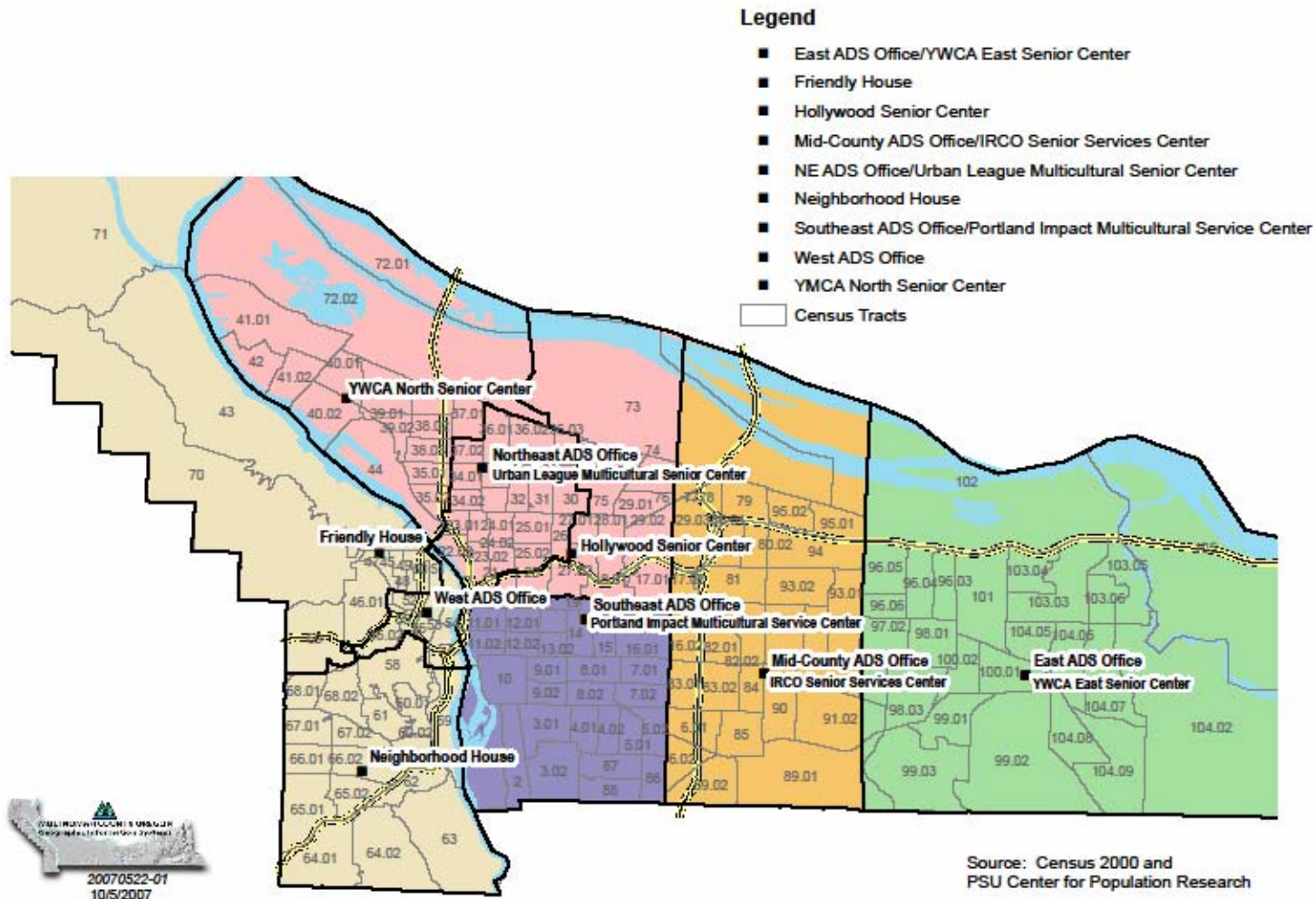
# SUN Community Schools





# ADS Service Sites

## ADS Offices and District Centers with Census Tracts

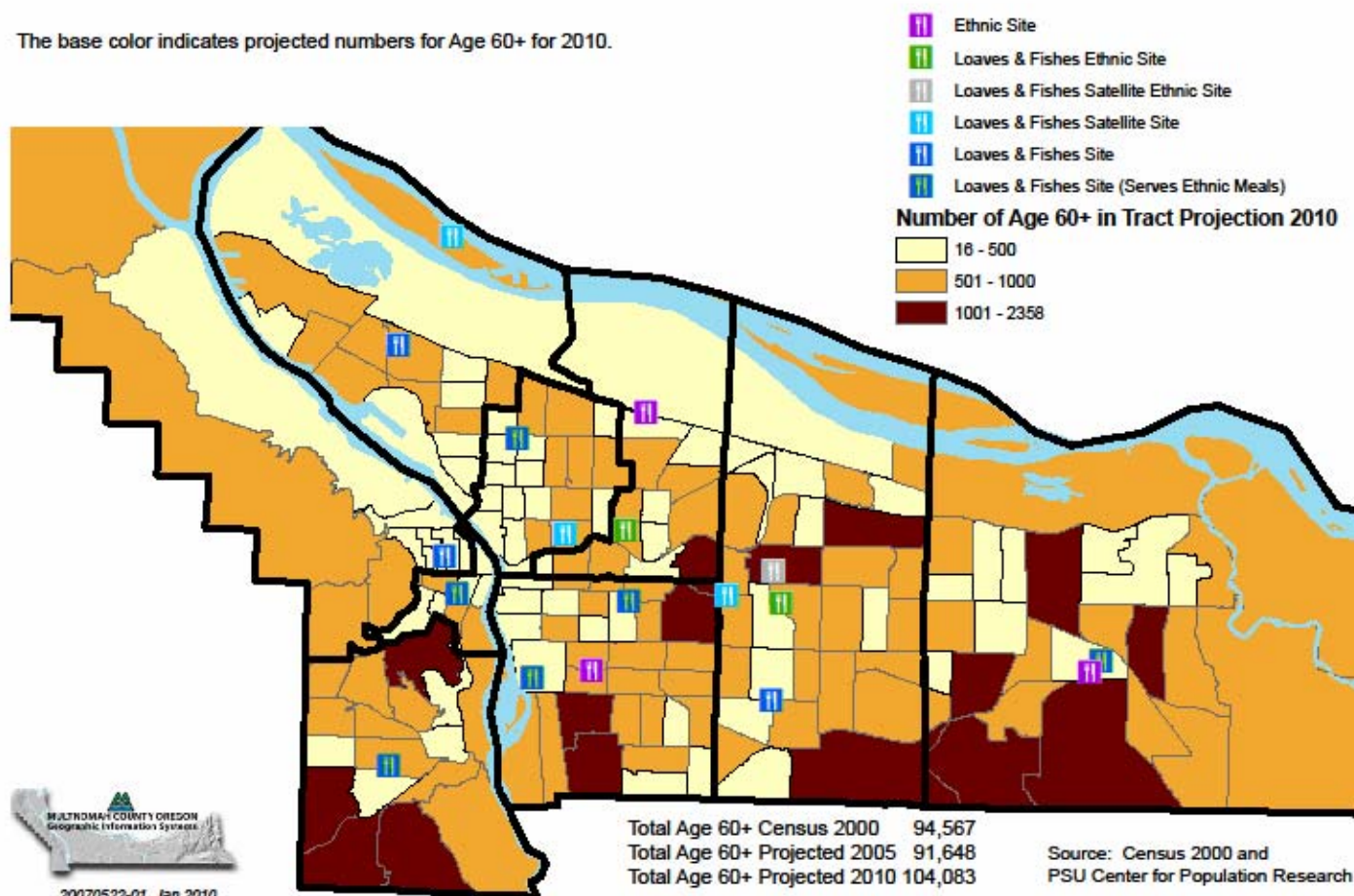




# Senior Meal Sites and 60+ Population Projections

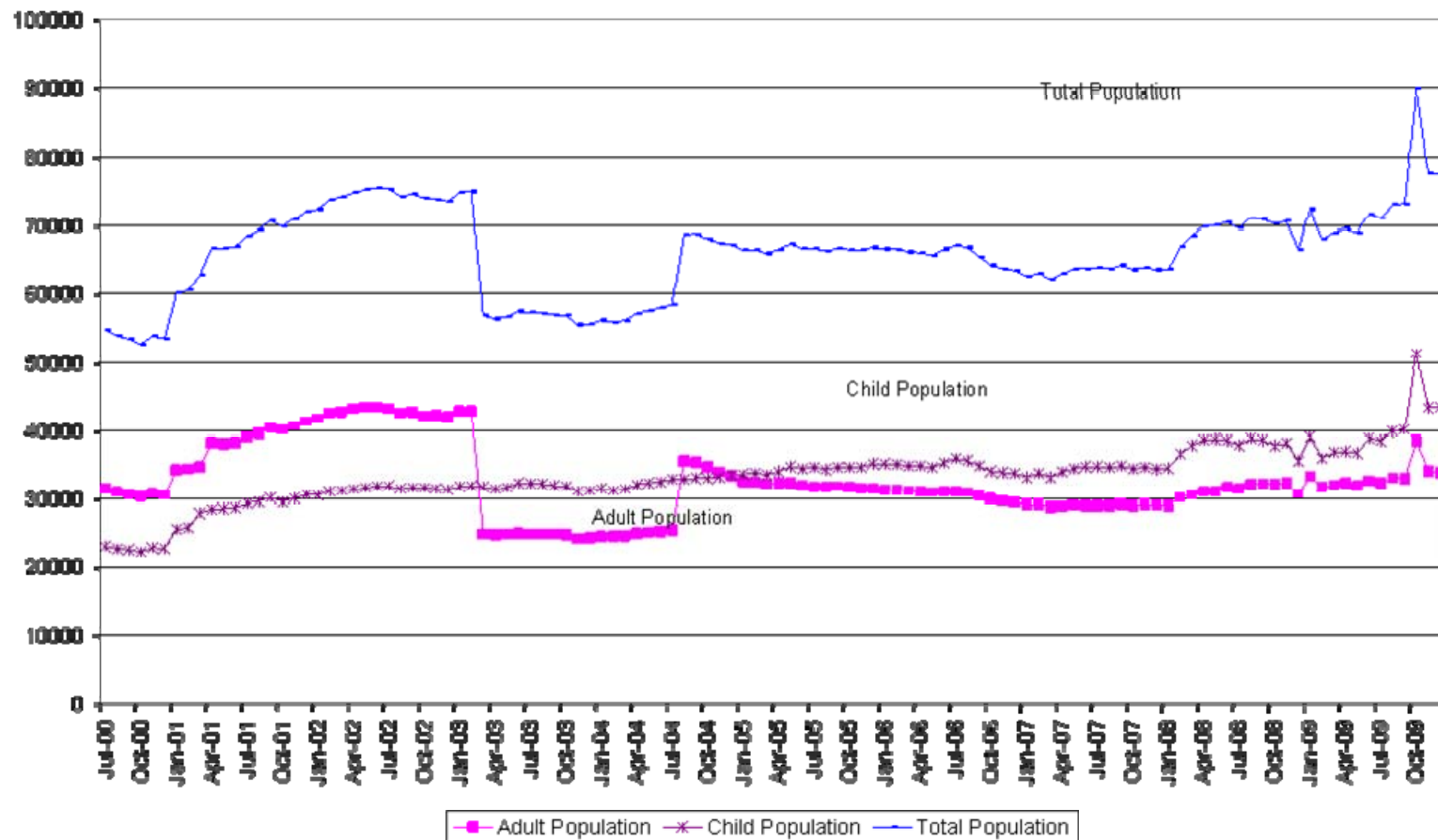
## Age 60+ Projections for 2010 By Census Tract

The base color indicates projected numbers for Age 60+ for 2010.

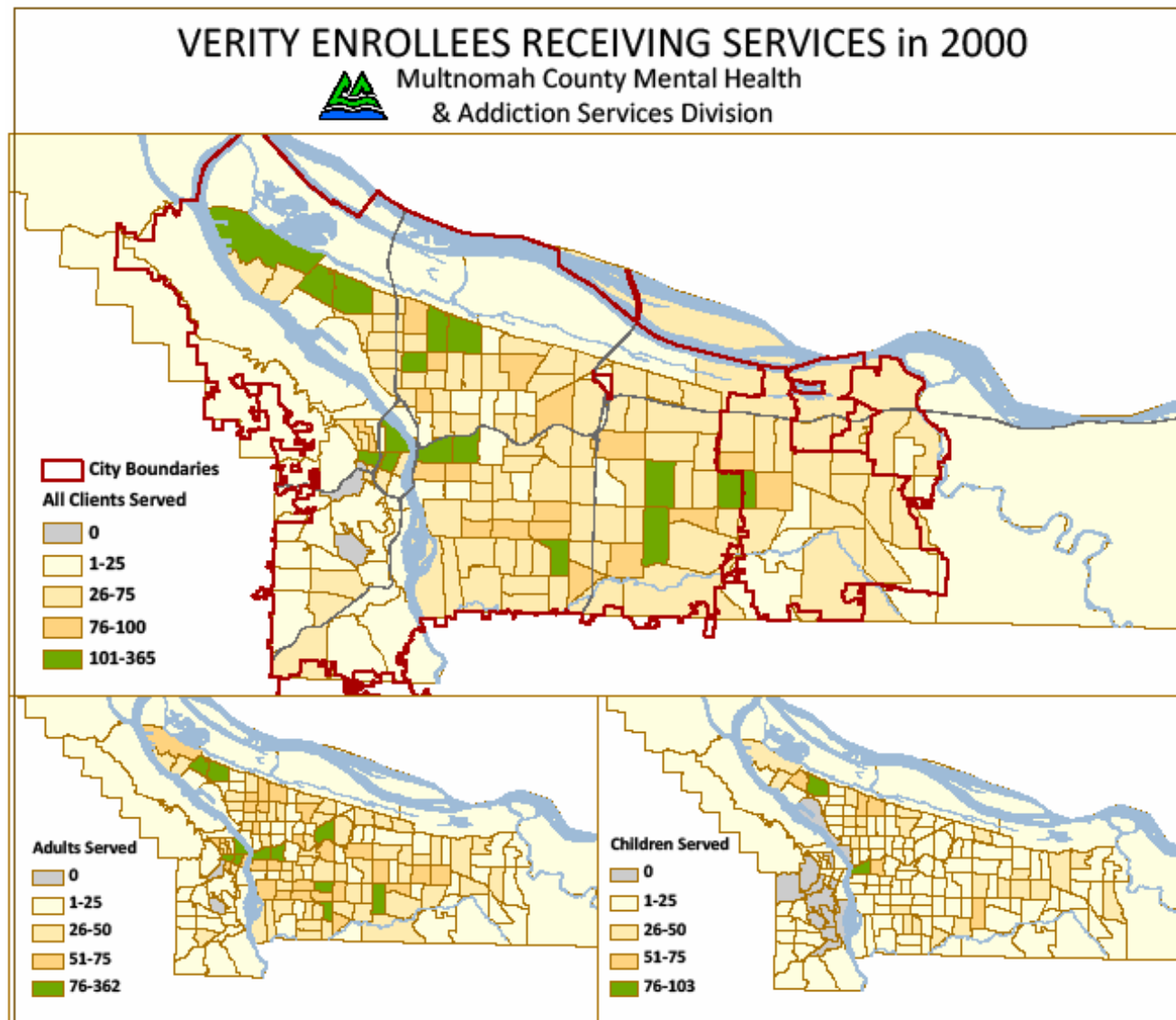


# Monthly Enrollment in OHP

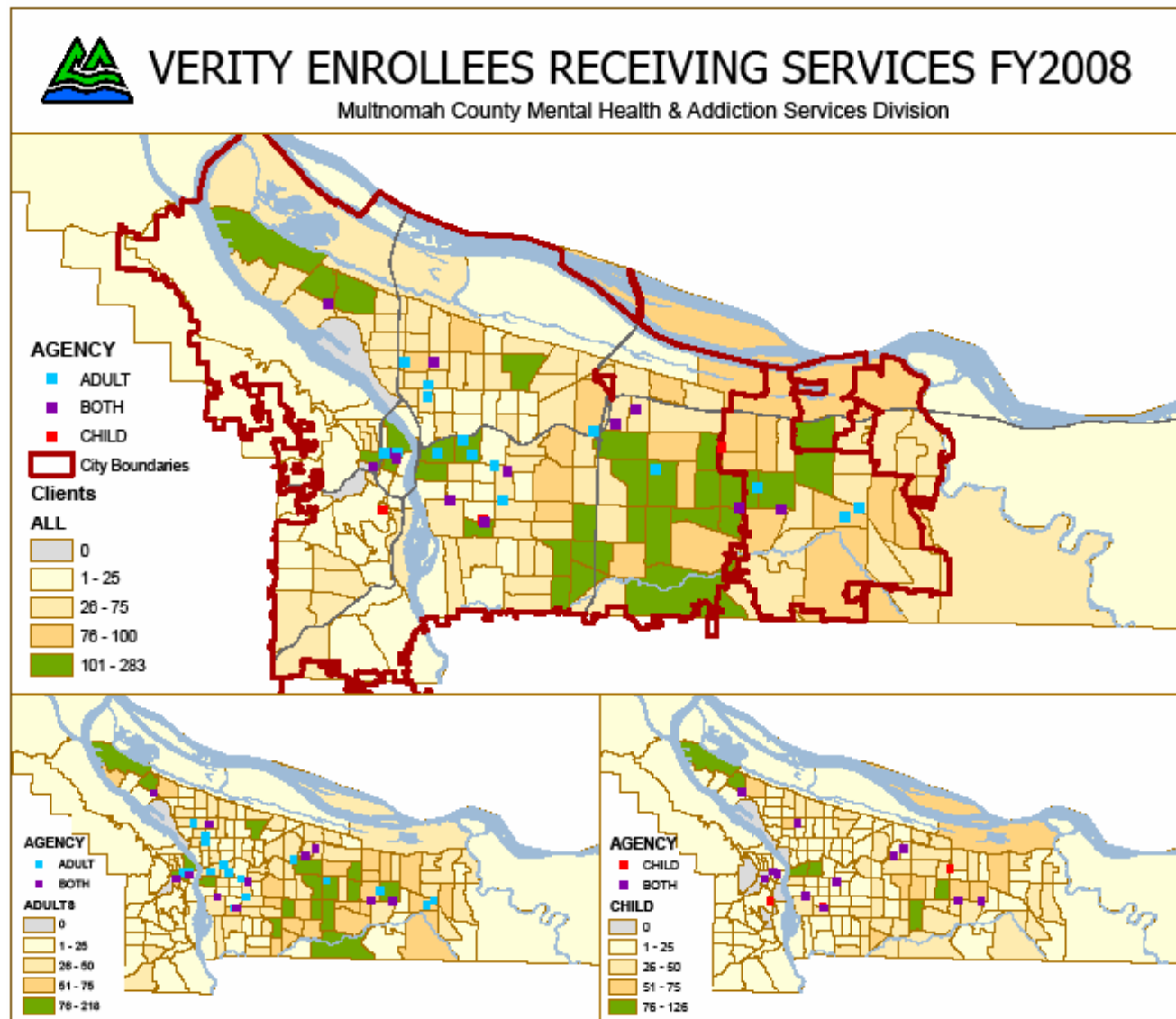
Verity Integrated Behavioral Healthcare Services  
Member Population July 2000 to Present



# Verity Enrollees Receiving Services 2000



# Verity Enrollees Receiving Services 2008



00000193.01 00000001 000000

## Conclusion

---

- ❑ Poverty is shifting from North/Northeast Portland eastward to Mid and East County.
- ❑ A large proportion of populations of color have moved to Mid and East County.
- ❑ Service locations have not kept pace with the movement of populations and the need for services.