

MULTNOMAH COUNTY CHARTER, Vol. 2, Bk. 1  
-Report on the Hypothesis of Establish-  
ing a Department of Public Safety (Div-  
ision of Law Enforcement)

*Remington-Rand*  
ALOG NO. 520081R • IF FASTENERS  
TO BE INCLUDED PLEASE SPECIFY  
**EMROCK FOLDER**  
MADE IN U.S.A.

HYPOTHESES

A  
REPORT  
ON THE HYPOTHESIS OF  
ESTABLISHING A DEPARTMENT OF  
PUBLIC SAFETY  
(DIVISION OF LAW ENFORCEMENT)



Each member of the Home Rule Charter Committee is in possession of a preliminary report on the organization and operations of the Sheriff of Multnomah County. This report includes functional charts describing in brief oversimplified language the functional responsibilities of each division of the Sheriff's Department as they relate to the overall law enforcement function. It would appear that the organization of the Sheriff's Department is theoretically sound, complying with the two basic principles of organization and management theory known as span of control and unity of command. Accordingly, no change in the organization of the Sheriff's Department is recommended at this time.

It would appear, however, that the statutory responsibilities of the Sheriff could be expanded and clarified. Accordingly, the Sub-Committee on Law Enforcement recommends the following functional statements as the responsibilities of the chief law enforcement official of Multnomah County. These functions have been divided into three categories, namely: Civil, Criminal, and General. If the Home Rule Charter Committee should determine that the Sheriff should retain the civil process functions of the courts, the following language would apply. If on the other hand the Home Rule Charter Committee should determine that the civil process functions of the courts should be performed by another organizational entity, then the functional statements pertaining to his civil duties would not apply. The functional responsibilities recommended by the Sub-Committee on Law Enforcement are as follows:

#### CIVIL

- A. Service of all legal papers and court orders of every description.
- B. Enforcement of all legal directives and orders.

#### CRIMINAL

- A. Enforcement of all criminal statutes, local laws, and ordinances.
- B. Enforcement of all legal directives and orders.
- C. Care and custody of all violators of civil and criminal laws.
- D. Care and custody of all property of every kind and description coming into his possession by reason of statute or ordinance, or by court directive.
- E. Protect public and property in times of disaster, riot, and emergency.

#### GENERAL

Perform all other functions required or permitted as Sheriff or chief law enforcement officer of the county.



While no effort has been made to determine whether the sheriff or the chief law enforcement officer should be elective or appointive, the Sub-Committee on Law Enforcement had some thoughts on the qualifications of the office. It was agreed by the sub-committee that if the office of the chief law enforcement officer were to be elective, there should be no qualifications other than citizenship and age. If on the other hand the office should be appointive, the sub-committee feels that the appointee should meet some qualifications, particularly regarding minimum education and experience. It was agreed that the minimum education should be two years training in some recognized educational institution, and the minimum experience should include four years in some field of law enforcement activity.

Chart I, appended hereto, shows the possibilities for inclusion in a Department of Public Safety. The Sub-Committee on Law Enforcement will continue with further studies in this area.

## RESPONSIBILITIES OF THE DIRECTOR OF PUBLIC SAFETY

- CIVIL: a. Service of all legal papers and court orders of every description.  
b. Enforcement of all legal directives and orders.
- CRIMINAL: a. Enforcement of all criminal statutes, local laws, and ordinances.  
b. Enforcement of all legal directives and orders.  
c. Care and custody of all violators of civil and criminal laws.  
d. Care and custody of all property of every kind and description coming into his possession by reason of statute or ordinance, or by court directive.  
e. Protection of public and property in times of disaster, riot, and emergency.
- GENERAL: a. Perform all other functions required or permitted as sheriff or chief law enforcement officer of the county.

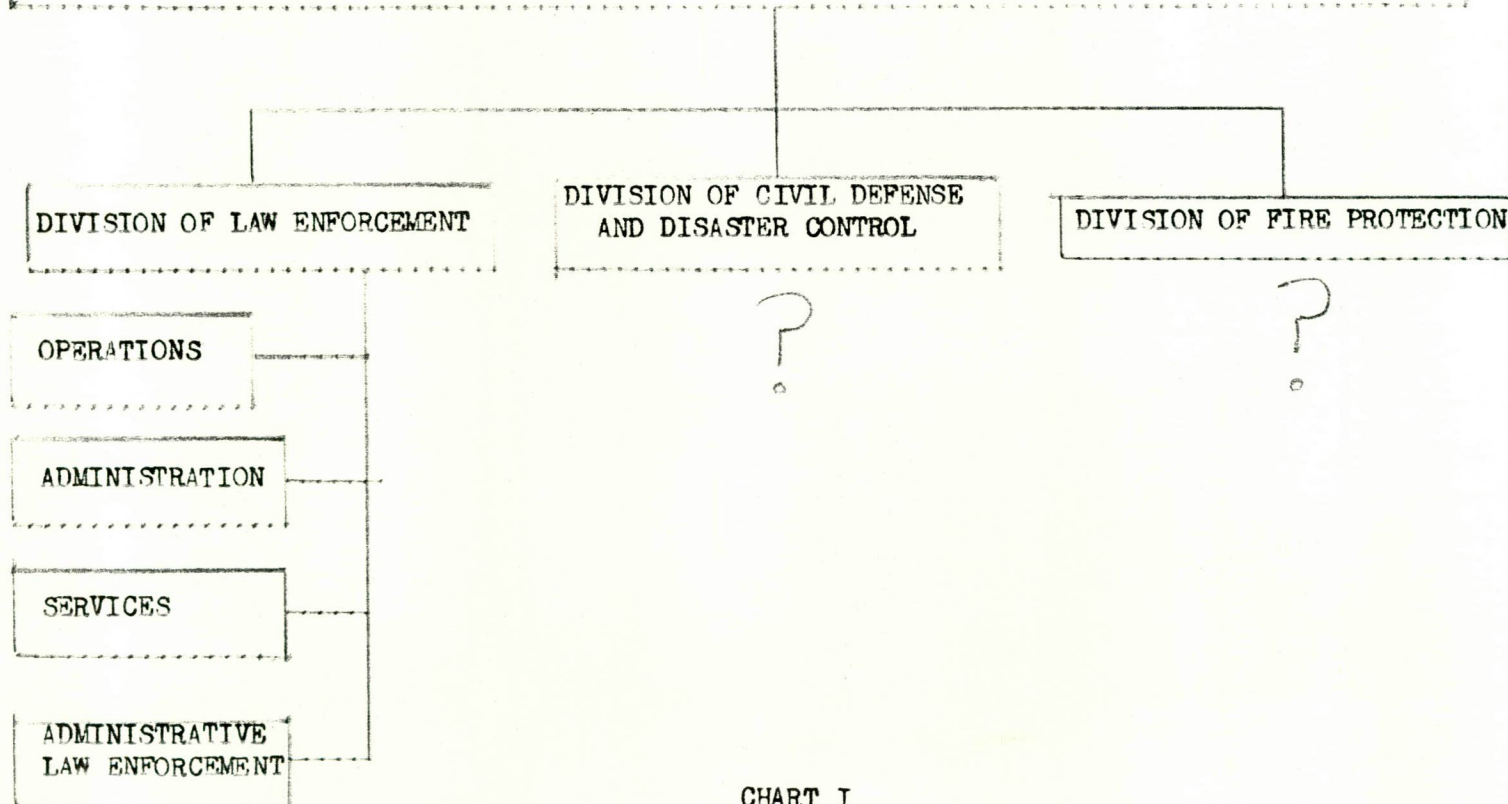


CHART I

REPORT  
OF THE  
SUB-COMMITTEE ON LAW ENFORCEMENT  
TO THE  
HOME RULE CHARTER COMMITTEE  
OF  
MULTNOMAH COUNTY, OREGON

Neva Elliott - Chairman  
William Brunner  
John Sonderer



Summary and Recommendations. As originally conceived, the Sub-Committee on Law Enforcement was charged with exploring the functions of law enforcement in Multnomah County, and these functions included those facets of government carried out by the Sheriff (exclusive of his tax collection division and his civil division), the Donald E. Long Home, and Dog Control.

In our first meeting, we determined that the Donald E. Long Home more properly belonged under the purview of the Sub-Committee on Court Support since its function is the care of children who are wards of the court. At this same meeting, the sub-committee concluded that their area of assignment was not restrictive but was merely a guide. Accordingly, the sub-committee on its own motion expanded its scope to study all areas of public safety including the functions of disaster control as well as fire protection.

It is the recommendation of the Sub-Committee on Law Enforcement that the Charter of Multnomah County contain a provision for a Department of Public Safety to include the statutory responsibilities of a sheriff, the law enforcement functions of the county, the responsibility of developing a disaster plan for the county, and the duties of providing fire protection to the populace through the traditional functions of a fire marshal and the administration of any county fire districts organized under this charter.

The question of the appointment or election of the director will depend upon the ultimate decision of the Home Rule Charter Committee on the composition of the executive hierarchy. If the charter provides for an appointed executive officer, this sub-committee recommends the continued election of a sheriff. If, on the other hand, the charter provides for an elected executive and a separate legislative and policy making board, this sub-committee recommends an appointed Director of Public Safety with qualifications of not less than four years experience and not less than two years of advanced training in law enforcement.

## BACKGROUND

Recognizing that a charter at its best is broad in its language, the following information is submitted for informational purposes and possible inclusion into a report for the governing body as to the reasons for this Department of Public Safety plus our recommendations as to the composition and functional responsibilities in order to give them the benefit of our thinking in their deliberations in organizing for operation.

Law Enforcement. The present law enforcement of Multnomah County is under the leadership of an elected sheriff. The Sheriff's office patrols both roads and waterways for the enforcement of traffic laws, performs criminal investigations with scientific methods, and operates the county jails.

The sub-committee recommends a functional Division of Law Enforcement within a Department of Public Safety embracing all of the functions of law enforcement including scientific investigations and intelligence. Dog control, while largely administrative in nature, is nonetheless a law enforcement function, and this function has been included under law enforcement for administrative purposes. The licensing of dogs should be accomplished through the Licensing section of the Department of Records and Elections.

### LAW ENFORCEMENT DIVISION

1. Patrols county roads and enforces traffic laws.
2. Patrols rivers and enforces boating laws.
3. Conducts criminal investigations.
4. Maintains records.
5. Maintains communications system.
6. Enforces dog control laws.
7. Serves all legal papers and court orders.
8. Enforces all legal directives and orders.



Custody. Present statutes call for the Sheriff to have custody of prisoners and other inmates delivered to him. Multnomah County currently operates three jail facilities: a courthouse jail, Rocky Butte jail, and the Multnomah County Correctional Institution. Not only are prisoners cared for in these facilities, but efforts at rehabilitation have been commenced, and the rehabilitation program should be applauded and expanded.

The sub-committee recommends that a functional Custody Division be established to administer the jail facilities and to endeavor the restoration of prisoners to useful lives through expanded rehabilitation programs.

CUSTODY DIVISION
1. Maintains custody of prisoners and inmates in county jail facility. 2. Conducts training programs for rehabilitation of felons.

Fire Protection. As a county functions, Multnomah County is not engaged in fire protection from the standpoint of fire prevention or fire fighting. Only one of the thirteen fire districts in Multnomah County, District #10, has a fire marshal. The State Fire Marshal has jurisdiction in the unincorporated areas, but he is able to provide Multnomah County with only one of his deputies. Municipal fire marshals are authorized by the statutes and their duties are essentially as follows.



STATE AND MUNICIPAL FIRE MARSHALS
-----------------------------------

- |  |
|--|
| <ol style="list-style-type: none"><li>1. Prevention of fires.</li><li>2. Storage and use of combustibles and explosives.</li><li>3. Construction, maintenance, and regulation of fire escapes.</li><li>4. Safety and adequacy of exit in case of fire from factories, asylums, hospitals, churches, schools, etc.</li><li>5. Suppression of arson and fraudulent claims.</li><li>6. Standards for equipment used for fire protection.</li><li>7. Training for administrative personnel of municipal fire departments and rural fire districts.</li></ol> |
|--|

Fire Protection in the unincorporated areas of Multnomah County is accomplished by the formation of special service districts.

This sub-committee recommends a Fire Protection Division for the administration of any new county fire districts and the establishment of the office of a County Fire Marshal.

FIRE PROTECTION DIVISION
--------------------------

- |   |
|---|
| <ol style="list-style-type: none"><li>1. Administers County Fire Districts.</li><li>2. Acts as County Fire Marshal.</li></ol> |
|---|

It is further recommended that Multnomah County seek enabling legislation for fire districts in the unincorporated areas to choose by popular election the option of becoming a county fire district.

Administration and Disaster Control. In the span of the last twenty years, there have been three major disasters in Multnomah County: the Vanport flood, the Columbus Day storm, and the December floods of 1964. Since the dis-establishment of the civil defense program in the County, there is no coordinating activity within the county for disaster control. The sub-committee recommends that the Department of Public Safety assume the responsibility of developing a disaster control plan for Multnomah County. It is therefor recommended that a Division of Administration and Disaster Control be established within the Department of Public Safety.

ADMINISTRATION AND DISASTER CONTROL
1. Recommends administrative policy.
2. Conducts research projects.
3. Plans and conducts training programs.
4. Plans and coordinates disaster control.



Conclusion. The Sub-Committee on Law Enforcement feels that all of the functions discussed are necessary for the fulfillment of the county's responsibilities to protect the public. The recommended organization for the accomplishment of these goals is indicated as follows.

DEPARTMENT OF PUBLIC SAFETY

LAW ENFORCEMENT  
DIVISION

1. Patrols county roads and enforces traffic laws.
2. Patrols rivers and enforces boating laws.
3. Conducts criminal investigations.
4. Maintains records.
5. Maintains communications system.
6. Enforces dog control laws.
7. Service of all legal papers and court orders of every description.
8. Enforces all legal directives and orders.

CUSTODY  
DIVISION

1. Maintains custody of prisoners & inmates.
2. Conducts training programs for rehabilitation of felons.

FIRE PROTECTION  
DIVISION

1. Administers County Fire Districts.
2. Acts as County Fire Marshal.

ADMINISTRATION AND  
DISASTER CONTROL  
DIVISION

1. Recommends administrative policy.
2. Conducts research projects.
3. Plans and conducts training programs.
4. Plans and coordinates disaster control.



A  
HYPOTHESIS  
ON THE  
ESTABLISHMENT  
OF A  
DEPARTMENT OF PUBLIC SAFETY



### STATUTORY RESPONSIBILITIES OF THE SHERIFF

1. Arrest and commit to prison all persons who break the peace, or attempt to break it, and all persons guilty of public offenses.
2. Defend his county against those who, by riot or otherwise, endanger the public peace or safety.
3. Execute the process and orders of the courts of justice or of judicial officers, when delivered to him for that purpose, according to law.
4. Execute all warrants delivered to him for that purpose by other public officers, according to law.
5. Attend the terms of the Supreme, circuit, or county court held within his county, and to obey its lawful orders or directions.

### DISASTER CONTROL

1. Develops disaster control plan for Multnomah County.
2. Ascertains training of police and fire reserves.
3. Plans communication network including coordination of amateur radio operators.
4. Maintains inventory by location of equipment and materials needed such as road equipment, sandbags, medical supplies, etc.
5. Maintains inventory of key employees with addresses and telephone numbers.
6. Maintains inventory of volunteer doctors and nurses.
7. Maintains liaison with volunteer groups such as American Red Cross, Salvation Army, etc.
8. Acts as assistant to disaster control commander in time of emergency.

### FIRE MARSHAL

1. Prevention of fires.
2. Storage and use of combustibles & explosives.
3. Construction, maintenance, and regulation of fire escapes.
4. Safety and adequacy of exit in case of fire from factories, asylums, hospitals, churches, schools, etc.
5. Suppression of arson and fraudulent claims.
6. Standards for equipment used for fire protection.
7. Training for administrative personnel of municipal fire departments & rural fire districts.

### DOG CONTROL

1. Issues licenses.
2. Enforces dog laws relating to control of dogs.
3. Passes on claims for live-stock killed or injured.
4. Impounds dogs not licensed.
5. Destroys dogs after required time limit.



## TRAFFIC ENFORCEMENT

1. Patrols the counties roads and streets.
2. Answers calls of complaints.
3. Enforces traffic laws.

## RIVER PATROL

1. Patrols both Willamette and Columbia Rivers.
2. Enforces boat laws, both administrative and traffic.
3. Perform water search and rescue operations.

## Personnel and Training

1. Plans and supervises in-service police training for department.

## DETECTIVES

1. Conducts continuing investigations of crimes and alleged crimes.
2. Serves criminal warrants.
3. Serves criminal subpoenas.

## JUVENILE

1. Perform investigations involving juveniles.

## Intelligence

1. Performs criminal investigations.
2. Performs personnel investigations on liquor license applicants.

## Inspection &amp; Planning

1. Advises & implements administrative policies.
2. Performs surveys and research projects.

## JAILS

1. Administer county jail facilities.
2. Take custody of prisoners in jails.
3. Endeavor rehabilitation of prisoners.

## RECORDS &amp; IDENTIFICATION

1. Maintains written and identification records.
2. Maintains communication system.

## SCIENTIFIC INVESTIGATIONS

1. Assist detectives in crime detection by supplying scientific methods.

As originally conceived, the Sub-Committee on Law Enforcement was charged with exploring the functions of law enforcement per se, the Donald E. Long Home, and Dog Control. These functional assignments were not restrictive, and in its first meeting the sub-committee discussed the possibility of a Department of Public Safety to include such things as civil defense and disaster control as well as the possible inclusion of fire protection should the county establish its own fire department. This hypothesis is predicated upon this thinking.

The sub-committee quickly disposed of the Donald E. Long Home as not being a law enforcement or public safety activity in that this is a detention facility for juveniles who are not legally criminals and in large measure are not detained because of their own misdeeds.

Pages 2 and 3 contain the functional statements of all of the departments and offices coming under the purview of the Sub-Committee on Law Enforcement. These include the duties of the Fire Marshal as well as the outline of duties pertaining to disaster control. They do not include the service and execution of process as this was a function assigned to the Sub-Committee on Court Support.



4.

#### STATUTORY RESPONSIBILITIES OF THE SHERIFF

1. Arrest and commit to prison all persons who break the peace, or attempt to break it, and all persons guilty of public offenses.
2. Defend his county against those who, by riot or otherwise, endanger the public peace or safety.
3. Execute the process and orders of the courts of justice or of judicial officers, when delivered to him for that purpose, according to law.
4. Execute all warrants delivered to him for that purpose by other public officers, according to law.
5. Attend the terms of the Supreme, circuit, or county court held within his county, and to obey its lawful orders or directions.

#### DISASTER CONTROL

1. Develops disaster control plan for Multnomah County.
2. Ascertains training of police and fire reserves.
3. Plans communication network including coordination of amateur radio operators.
4. Maintains inventory by location of equipment and materials needed such as road equipment, sandbags, medical supplies, etc.
5. Maintains inventory of key employees with addresses and telephone numbers.
6. Maintains inventory of volunteer doctors and nurses.
7. Maintains liaison with volunteer groups such as American Red Cross, Salvation Army, etc.
8. Acts as assistant to disaster control commander in time of emergency.

#### FIRE MARSHAL

1. Prevention of fires.
2. Storage and use of combustibles & explosives.
3. Construction, maintenance, and regulation of fire escapes.
4. Safety and adequacy of exit in case of fire from factories, asylums, hospitals, churches, schools, etc.
5. Suppression of arson and fraudulent claims.
6. Standards for equipment used for fire protection.
7. Training for administrative personnel of municipal fire departments & rural fire districts.

#### DOG CONTROL

1. Issues licenses.
2. Enforces dog laws relating to control of dogs.
3. Passes on claims for livestock killed or injured.
4. Impounds dogs not licensed.
5. Destroys dogs after required time limit.

→ TRANSFER TO LICENSING UNIT OF GOVERNMENT.



## TRAFFIC ENFORCEMENT

1. Patrols the counties roads and streets.
2. Answers calls of complaints.
3. Enforces traffic laws.

## RIVER PATROL

1. Patrols both Willamette and Columbia Rivers.
2. Enforces boat laws, both administrative and traffic.
3. Perform water search and rescue operations.

## Personnel and Training

1. Plans and supervises in-service police training for department.

## DETECTIVES

1. Conducts continuing investigations of crimes and alleged crimes.
2. Serves criminal warrants.
3. Serves criminal subpoenas.

## JUVENILE

1. Perform investigations involving juveniles.

## Intelligence

1. Performs criminal investigations.
2. Performs personnel investigations on liquor license applicants.

## Inspection &amp; Planning

1. Advises & implements administrative policies.
2. Performs surveys and research projects.

## JAILS

1. Administer county jail facilities.
- Take custody of prisoners in jails.
3. Endeavor rehabilitation of prisoners.

## RECORDS &amp; IDENTIFICATION

1. Maintains written and identification records.
2. Maintains communication system.

## SCIENTIFIC INVESTIGATIONS

1. Assist detectives in crime detection by supplying scientific methods.

## LAW ENFORCEMENT DIVISION

1. Patrols county roads and enforces traffic laws.
2. Patrols rivers and enforces boating laws.
3. Conducts criminal investigations.
4. Maintains records.
5. Maintains communications system.
6. Enforces dog control laws.
7. Serves criminal warrants and subpoenas.

This hypothesis visualizes a functional Division of Law Enforcement within a Department of Public Safety embracing all of the functions of law enforcement per se including scientific investigations and intelligence. Dog control, while largely administrative in nature, is nonetheless a law enforcement function, and this function has been included under law enforcement for administrative purposes.



6.

## STATUTORY RESPONSIBILITIES OF THE SHERIFF

1. Arrest and commit to prison all persons who break the peace, or attempt to break it, and all persons guilty of public offenses.
2. Defend his county against those who, by riot or otherwise, endanger the public peace or safety.
3. Execute the process and orders of the courts of justice or of judicial officers, when delivered to him for that purpose, according to law.
4. Execute all warrants delivered to him for that purpose by other public officers, according to law.
5. Attend the terms of the Supreme, circuit, or county court held within his county, and to obey its lawful orders or directions.

## DISASTER CONTROL

1. Develops disaster control plan for Multnomah County.
2. Ascertains training of police and fire reserves.
3. Plans communication network including coordination of amateur radio operators.
4. Maintains inventory by location of equipment and materials needed such as road equipment, sandbags, medical supplies, etc.
5. Maintains inventory of key employees with addresses and telephone numbers.
6. Maintains inventory of volunteer doctors and nurses.
7. Maintains liaison with volunteer groups such as American Red Cross, Salvation Army, etc.
8. Acts as assistant to disaster control commander in time of emergency.

## FIRE MARSHAL

1. Prevention of fires.
2. Storage and use of combustibles & explosives.
3. Construction, maintenance, and regulation of fire escapes.
4. Safety and adequacy of exit in case of fire from factories, asylums, hospitals, churches, schools, etc.
5. Suppression of arson and fraudulent claims.
6. Standards for equipment used for fire protection.
7. Training for administrative personnel of municipal fire departments & rural fire districts.

## ~~DOG CONTROL~~

- ~~1. Issues licenses~~
- ~~2. Enforces dog laws relating to control of dogs~~
- ~~3. Passes on claims for liver stock killed or injured~~
- ~~4. Impounds dogs not licensed~~
- ~~5. Destroys dogs after required time limit~~



~~TRAFFIC ENFORCEMENT~~

- ~~1. Patrols the counties roads and streets.~~
- ~~2. Answers calls of complaints.~~
- ~~2. Enforces traffic laws.~~

~~RIVER PATROL~~

- ~~1. Patrols both Willamette and Columbia Rivers.~~
- ~~2. Enforces boat laws, both administrative and traffic.~~
- ~~2. Performs water search and rescue operations.~~

~~DETECTIVES~~

- ~~1. Conducts continuing investigations of crimes and alleged crimes.~~
- ~~2. Serves criminal warrants.~~
- ~~2. Serves criminal subpoenas.~~

~~JUVENILE~~

- ~~1. Perform investigations involving juveniles.~~

Personnel and Training

1. Plans and supervises in-service police training for department.

~~Intelligence~~

- ~~1. Performs criminal investigations.~~
- ~~2. Performs personnel investigations on liquor license applicants.~~

Inspection & Planning

1. Advises & implements administrative policies.
2. Performs surveys and research projects.

JAILS

1. Administer county jail facilities.
- Take custody of prisoners in jails.
3. Endeavor rehabilitation of prisoners.

~~RECORDS & IDENTIFICATION~~

- ~~1. Maintains written and identification records.~~
- ~~2. Maintains communication system.~~

~~SCIENTIFIC INVESTIGATIONS~~

- ~~1. Assist detectives in crime detection by supplying scientific methods.~~

CUSTODY DIVISION

1. Maintains custody of prisoners and inmates in county jail facility.
2. Conducts training programs for rehabilitation of felons.

A second functional division within a Department of Public Safety is visualized as a Custody Division administering the county jail facilities, taking custody of prisoners in jails, and endeavoring to restore prisoners to useful lives through rehabilitation programs.



8.

## STATUTORY RESPONSIBILITIES OF THE SHERIFF

1. Arrest and commit to prison all persons who break the peace, or attempt to break it, and all persons guilty of public offenses.
2. Defend his county against those who, by riot or otherwise, endanger the public peace or safety.
3. Execute the process and orders of the courts of justice or of judicial officers, when delivered to him for that purpose, according to law.
4. Execute all warrants delivered to him for that purpose by other public officers, according to law.
5. Attend the terms of the Supreme, circuit, or county court held within his county, and to obey its lawful orders or directions.

## DISASTER CONTROL

1. Develops disaster control plan for Multnomah County.
2. Ascertains training of police and fire reserves.
3. Plans communication network including coordination of amateur radio operators.
4. Maintains inventory by location of equipment and materials needed such as road equipment, sandbags, medical supplies, etc.
5. Maintains inventory of key employees with addresses and telephone numbers.
6. Maintains inventory of volunteer doctors and nurses.
7. Maintains liaison with volunteer groups such as American Red Cross, Salvation Army, etc.
8. Acts as assistant to disaster control commander in time of emergency.

## FIRE MARSHAL

1. Prevention of fires.
2. Storage and use of combustibles & explosives.
3. Construction, maintenance, and regulation of fire escapes.
4. Safety and adequacy of exit in case of fire from factories, asylums, hospitals, churches, schools, etc.
5. Suppression of arson and fraudulent claims.
6. Standards for equipment used for fire protection.
7. Training for administrative personnel of municipal fire departments & rural fire districts.

## ~~DOG CONTROL~~

- ~~1. Issues licenses.~~
- ~~2. Enforces dog laws relating to control of dogs.~~
- ~~2. Passes on claims for bite.~~
- ~~1. Impounds dogs not licensed.~~
- ~~5. Destroys dogs not required to be licensed.~~



TRAFFIC ENFORCEMENT

1. Patrols all county roads
2. Enforces traffic laws

RIVER PATROL

1. Patrols both Willamette and Columbia Rivers
2. Enforces both state and federal administrative and traffic laws
3. Performs water rescue and rescue operations

DETECTIVES

1. Conducts continuing investigations of crimes and alleged crimes
2. Serves criminal warrants
3. Serves criminal subpoenas

JUVENILE

1. Performs investigations involving juveniles

Personnel and Training

1. Plans and supervises in-service police training for department.

Intelligence

1. Performs criminal investigations
2. Performs personnel investigations
3. Performs liquor license applications

Inspection & Planning

1. Advises & implements administrative policies.
2. Performs surveys and research projects.

JAILS

1. Administers county jail facilities
2. Take custody of prisoners in jails
3. Enforce rehabilitation of prisoners

RECORDS & IDENTIFICATION

1. Maintains written and identification records
2. Maintains communication system

SCIENTIFIC INVESTIGATIONS

1. Assist detectives in crime detection by supplying scientific methods.

FIRE PROTECTION DIVISION

1. Administers County Fire Districts.
2. Inspects county for fire and fire safety hazards.

The Fire Protection Division of a Department of Public Safety is visualized as a need to fill a current void in Multnomah County. The City of Portland has thirty-one fire inspectors while the entire urban community outside the corporate limits of the City of Portland is served by one fire inspector from the State Fire Marshal's office. There is a definite need for fire prevention within the county, and such an operation within the county government would supplement rather than supplant the State Fire Marshal.

In the likelihood that the Home Rule Charter Committee should include County Service Districts within the charter of Multnomah County to include county fire protection districts, the administration of these fire protection districts are visualized as being accomplished through the Fire Protection Division of the Department of Public Safety.



# STATUTORY RESPONSIBILITIES OF THE SHERIFF

1. Arrest and commit to prison all persons who break the peace, or attempt to break it, and all persons guilty of public offenses.
2. Defend his county against those who, by riot or otherwise, endanger the public peace or safety.
3. Execute the process and orders of the courts of justice or of judicial officers, when delivered to him for that purpose, according to law.
4. Execute all warrants delivered to him for that purpose by other public officers, according to law.
5. Attend the terms of the Supreme, circuit, or county court held within his county, and to obey its lawful orders or directions.

## DISASTER CONTROL

1. Develops disaster control plan for Multnomah County.
2. Ascertains training of police and fire reserves.
3. Plans communication network including coordination of amateur radio operators.
4. Maintains inventory by location of equipment and materials needed such as road equipment, sandbags, medical supplies, etc.
5. Maintains inventory of key employees with addresses and telephone numbers.
6. Maintains inventory of volunteer doctors and nurses.
7. Maintains liaison with volunteer groups such as American Red Cross, Salvation Army, etc.
8. Acts as assistant to disaster control commander in time of emergency.

## FIRE MARSHAL

1. Prevention of fires.
2. Storage and use of combustibles & explosives.
3. Construction, maintenance, and regulation of fire escapes.
4. Safety and adequacy of exit in case of fire from factories, asylums, hospitals, churches, schools, etc.
5. Suppression of arson and fraudulent claims.
6. Standards for equipment used for fire protection.
7. Training for administrative personnel of municipal fire departments & rural fire districts.

## DOG CONTROL

1. Issues licenses.
2. Enforces dog laws relating to control of dogs.
3. Pays on claims for live dogs killed or injured.
4. Impounds dogs not licensed.
5. Destroys dogs after required time limit.



TRAFFIC ENFORCEMENT

1. Patrols the counties roads and streets.
2. Answers calls of complaints.
3. Enforces traffic laws.

RIVER PATROL

1. Patrols both Willamette and Columbia Rivers.
2. Enforces boat laws, both administrative and traffic.
3. Perform water search and rescue operations.

DETECTIVES

1. Conducts continuing investigations of crimes and alleged crimes.
2. Serves criminal warrants.
3. Serves criminal subpoenas.

JUVENILE

1. Perform investigations involving juveniles.

Personnel and Training

1. Plans and supervises in-service police training for department.

Intelligence

1. Performs criminal investigations.
2. Performs personnel investigations on liquor license applicants.

Inspection & Planning

1. Advises & implements administrative policies.
2. Performs surveys and research projects.

JAILES

1. Administers county jail facilities.
2. Take custody of prisoners in jails.
3. Endeavor rehabilitation of prisoners.

RECORDS & IDENTIFICATION

1. Maintains written and identification records.
2. Maintains communication system.

SCIENTIFIC INVESTIGATIONS

1. Assists detectives in criminal investigation by supplying scientific methods.

ADMINISTRATION AND DISASTER CONTROL

1. Advises administrative policy.
2. Performs surveys and research projects.
3. Plans and conducts training programs.
4. Plans and coordinates disaster control.

This hypothesis visualizes a Division of Administration and Disaster Control within this department as well. A centrally located and coordinated disaster control plan does not exist in Multnomah County at the present time. This division is visualized as accomplishing those duties as well as the present duties of the Administration Division of the Sheriff's Department.



DEPARTMENT OF PUBLIC SAFETY

```
graph TD; A[DEPARTMENT OF PUBLIC SAFETY] --> B[LAW ENFORCEMENT DIVISION]; A --> C[CUSTODY DIVISION]; A --> D[FIRE PROTECTION DIVISION]; A --> E[ADMINISTRATION AND DISASTER CONTROL DIVISION];
```

LAW ENFORCEMENT  
DIVISION

1. Patrols county roads and enforces traffic laws.
2. Patrols rivers and enforces boating laws.
3. Conducts criminal investigations.
4. Maintains records.
5. Maintains communications system.
6. Enforces dog control laws.
7. Serves criminal warrants and subpoenas.

CUSTODY  
DIVISION

1. Maintains custody of prisoners & inmates in county jail facility.
2. Conducts training programs for rehabilitation of felons.

FIRE PROTECTION  
DIVISION

1. Administers County Fire Districts.
2. Inspects county for fire and fire safety hazards.

ADMINISTRATION AND  
DISASTER CONTROL  
DIVISION

1. Advises administrative policy.
2. Performs surveys and research projects.
3. Plans and conducts training programs.
4. Plans and coordinates disaster control.