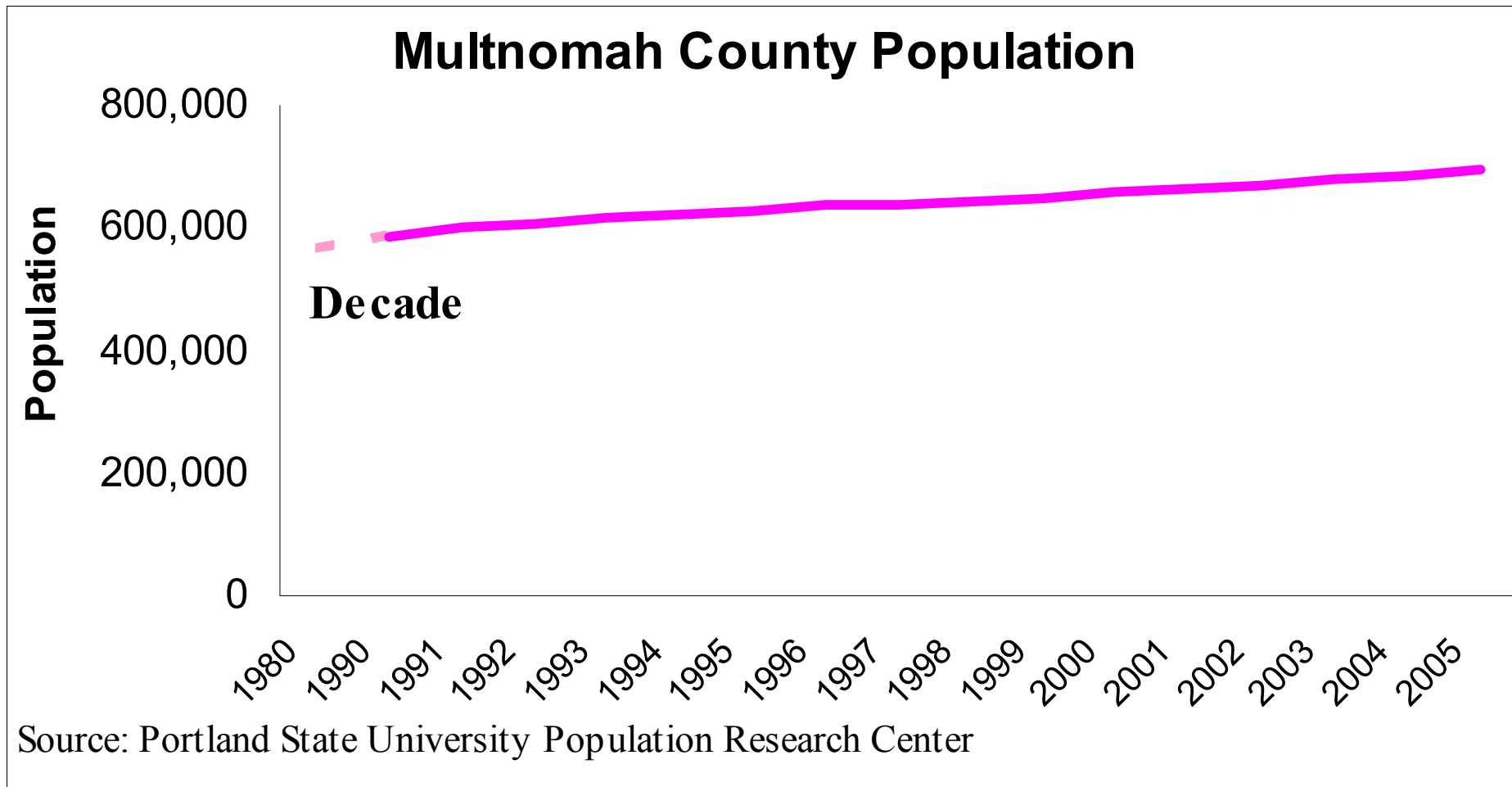


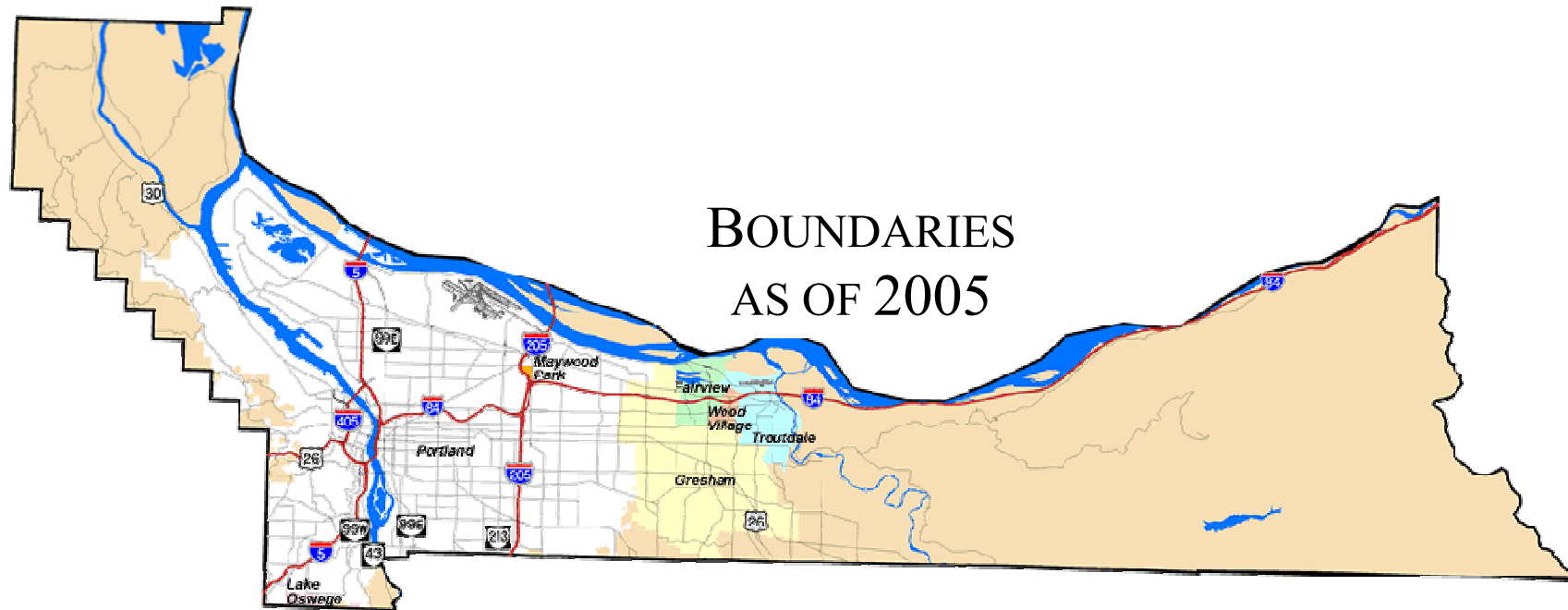
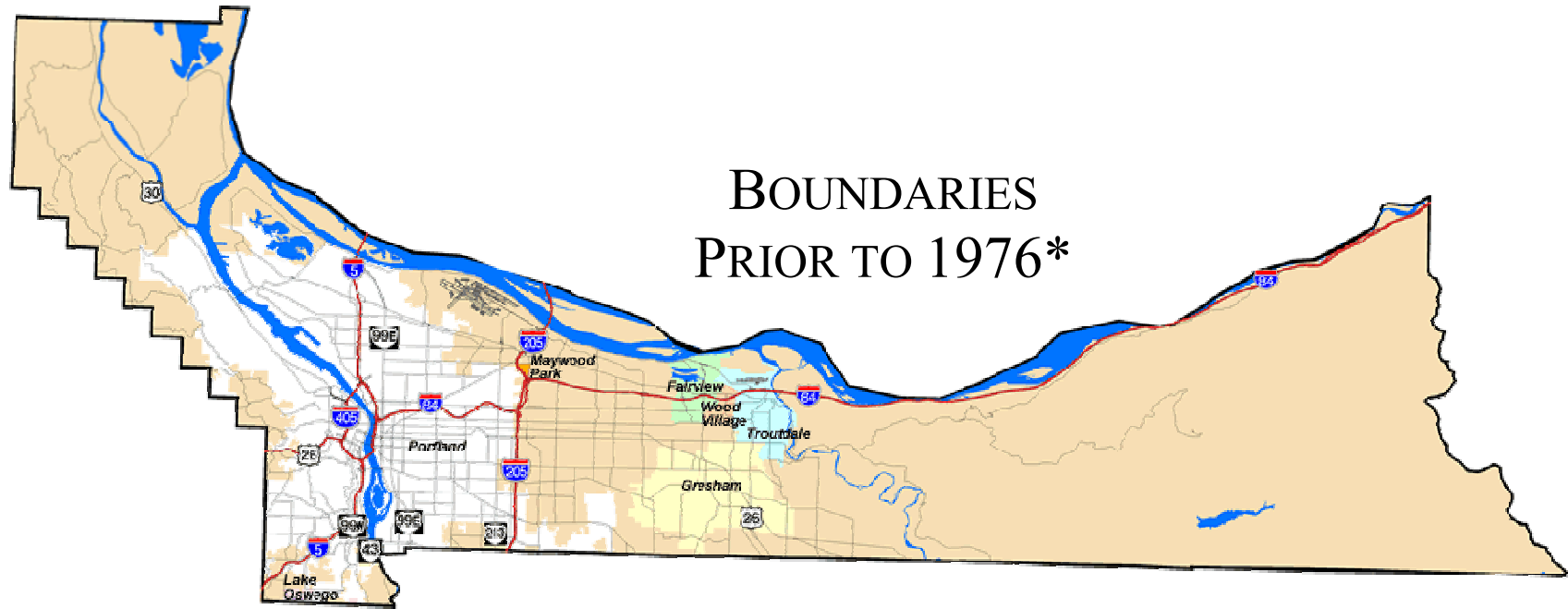
MULTNOMAH COUNTY BOARD OF COUNTY COMMISSIONERS ENFORCEMENT WORK SESSION: JANUARY 31, 2006

CONTEXT: RECENT CHANGES IN THE COUNTY'S BOUNDARIES, POPULATION, AND PATROL-RELATED ACTIVITIES.
MATT NICE, BUDGET OFFICE EVALUATION



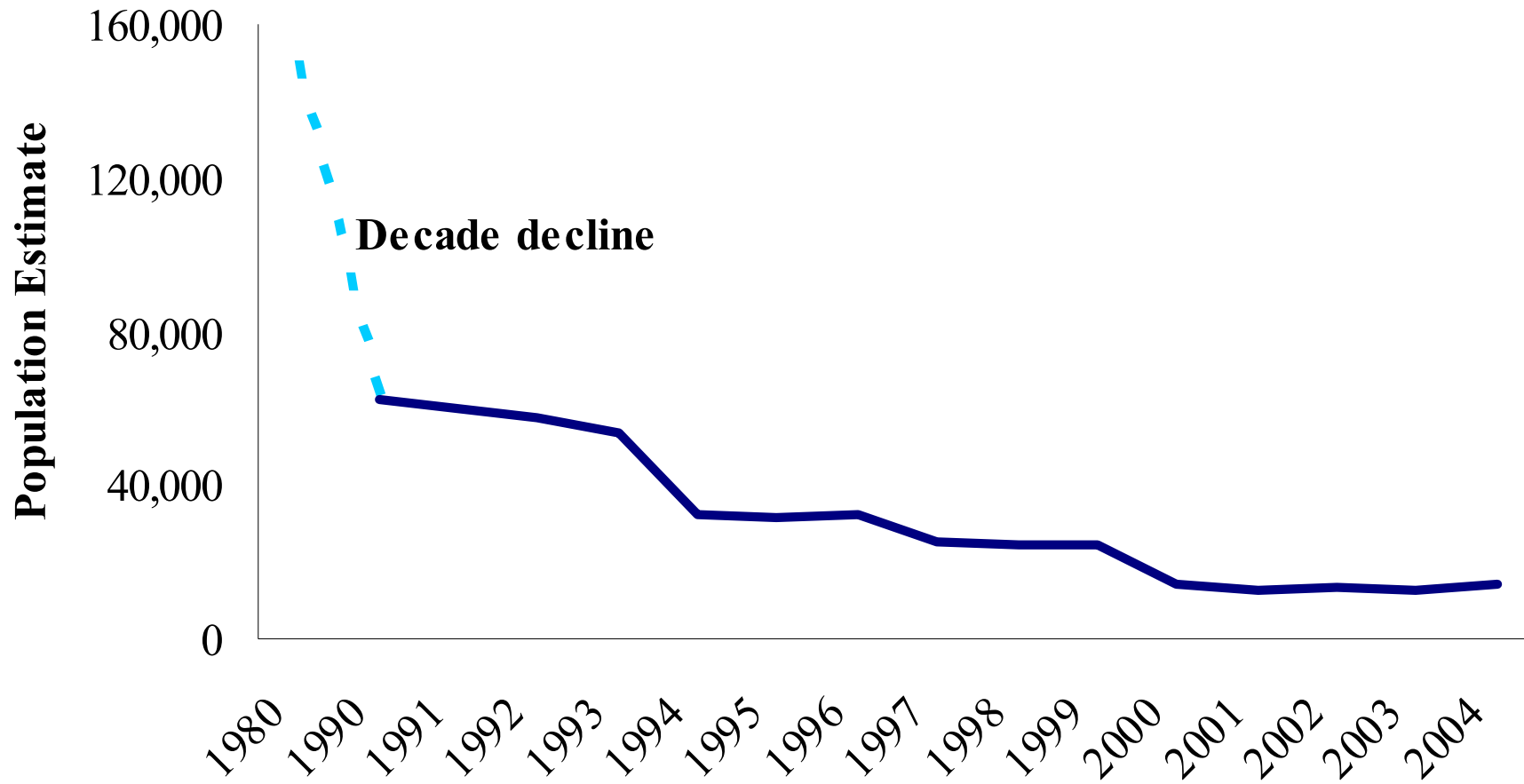
Multnomah County population has increased 23%, about 1.5-times the current size of Gresham. Gresham is the 4th largest city in Oregon.

CHANGES IN MULTNOMAH COUNTY INTER-JURISDICTIONAL BOUNDARIES



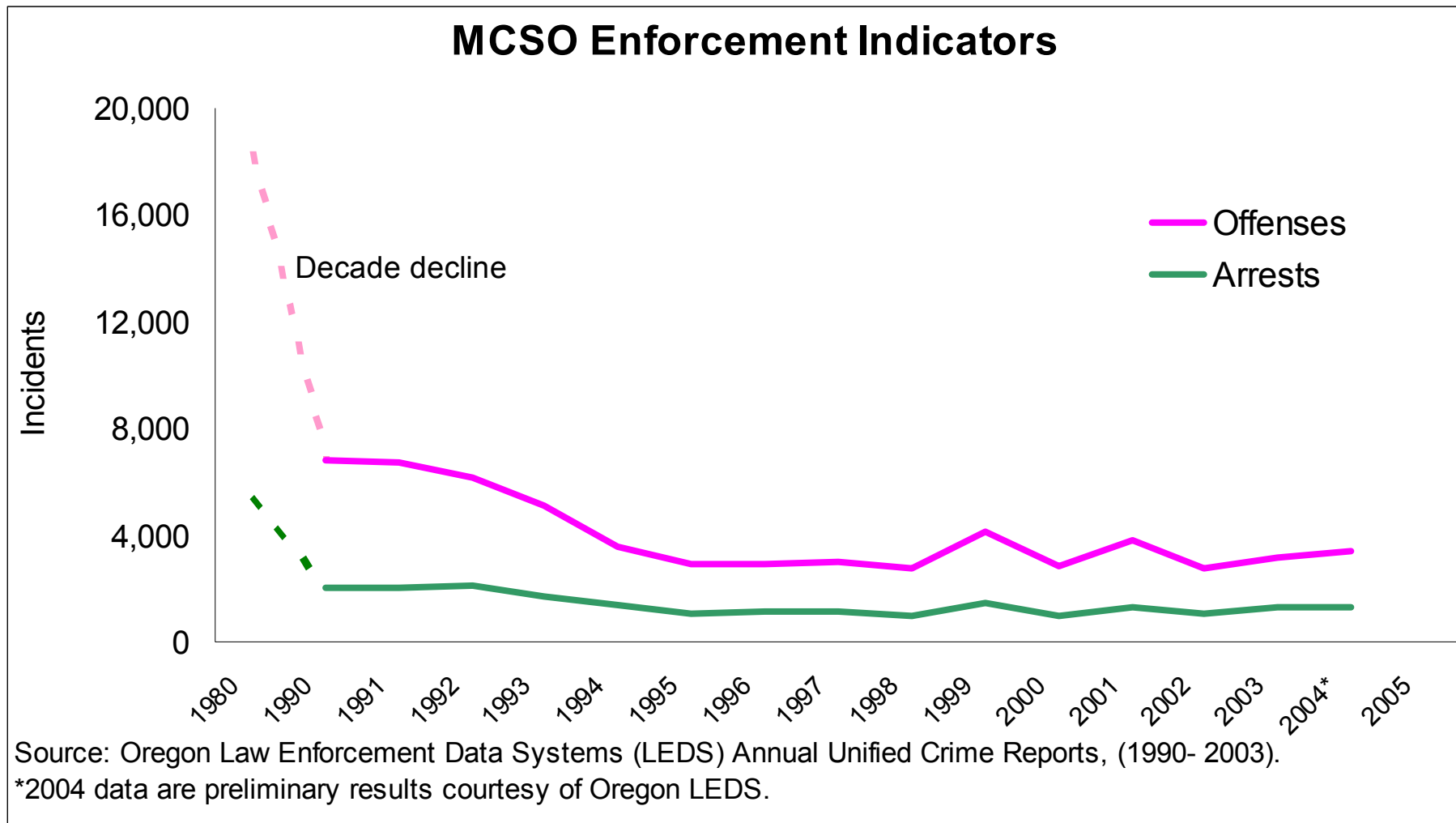
SOURCE: MULTNOMAH COUNTY GIS (2005). *PRIOR 1976 DATA BASED ON ESTIMATED HISTORICAL BOUNDARY DATA.

Multnomah County Unincorporated Population



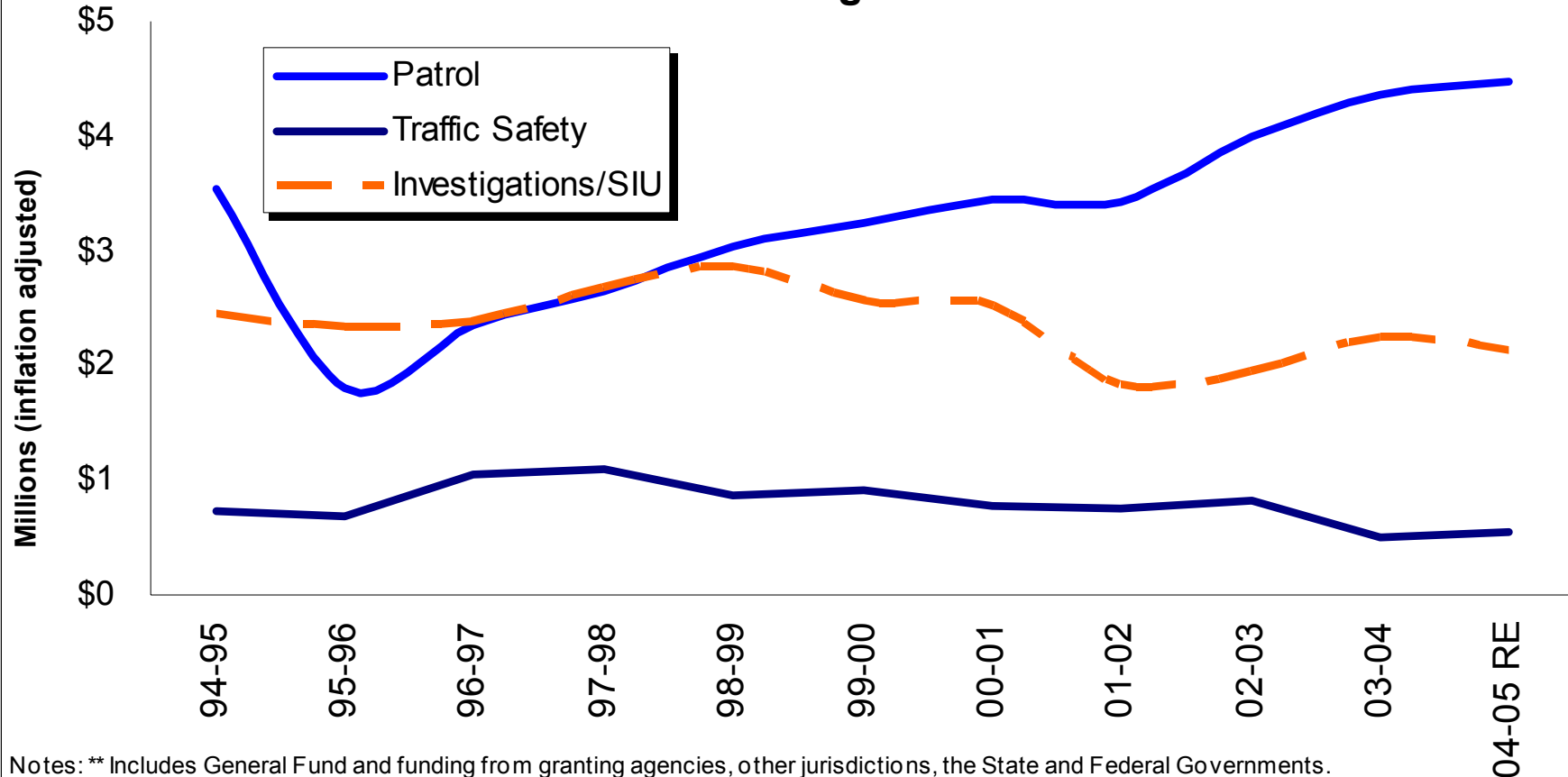
Source: Portland State University Population Research Center.

Annexation of densely populated areas of unincorporated Multnomah County lead to large declines in the unincorporated population and declines in unincorporated square miles. In 1980, the unincorporated area of Multnomah County accounted for 27% of the population. Today it's about 2%.



Offense and arrest workload indicators followed the same pattern—as population shifted into incorporated cities, unincorporated workload followed.

Law Enforcement Programs All Funds**

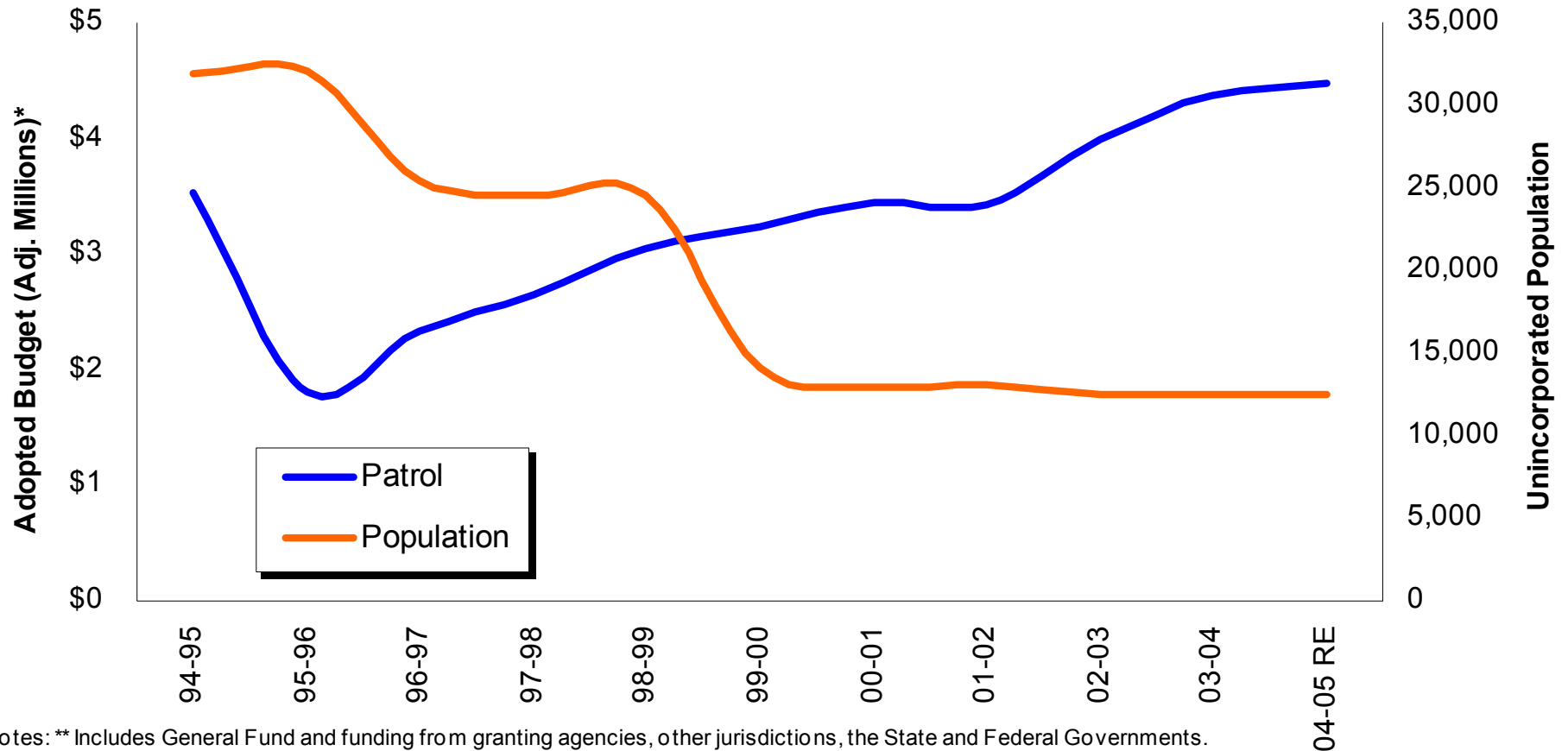


Notes: ** Includes General Fund and funding from granting agencies, other jurisdictions, the State and Federal Governments.

1. Patrol was adjusted for contracted patrol that MCSO does for cities (i.e. Wood Village) using the FY 05 figure (\$300,000). This is a conservative estimate and was not adjusted for inflation in the historical years. 2. Does not include administrative or support staff costs. 3. Does not include River Patrol

Over the last decade the patrol budget has shown increase.

Patrol Program Budget (All Funds) by Unincorporated Population



Notes: ** Includes General Fund and funding from granting agencies, other jurisdictions, the State and Federal Governments.

1. Patrol was adjusted for contracted patrol that MCSO does for cities (i.e. Wood Village) using the FY 05 figure (\$300,000). This is a conservative estimate and was not adjusted for inflation in the historical years. 2. Does not include administrative or support staff costs. 3. Does not include River Patrol

The increase in the patrol budget occurred as unincorporated populations continued their long-term decline. A snapshot of MCSO calls for service data suggest about 39% were for traffic stops. Portland Police and Gresham Police estimate traffic stops at 20% and 24%, respectively. Mapping these stops shows that about 41% were located in the incorporated cities of Portland and Gresham.

MCSO Data Dec. 2004

Traffic Stops

