

United States  
Department of  
Agriculture

Forest Service

Pacific  
Northwest  
Region

1988

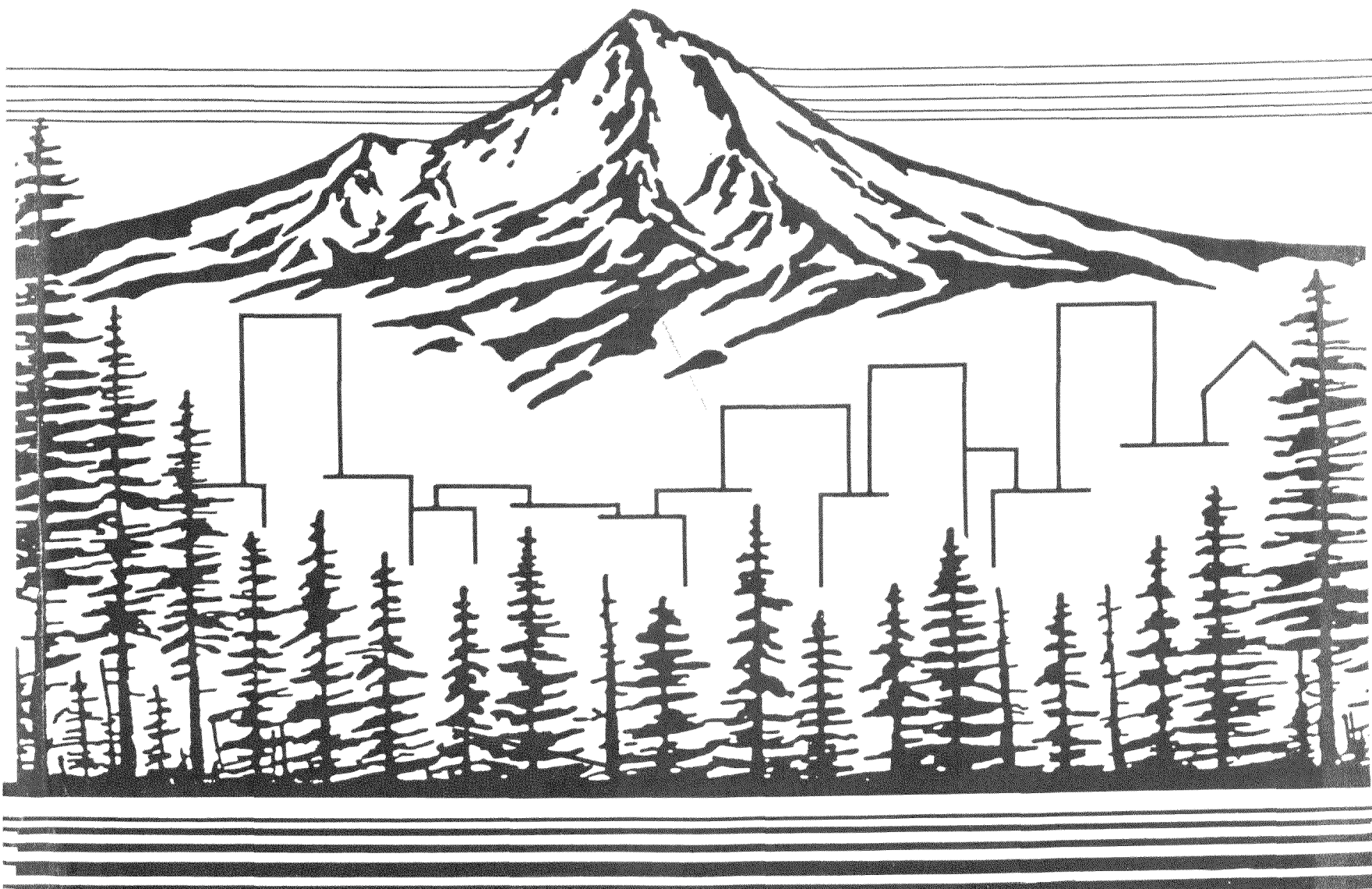


# Alternative and Resource Maps

Draft Environmental  
Impact Statement

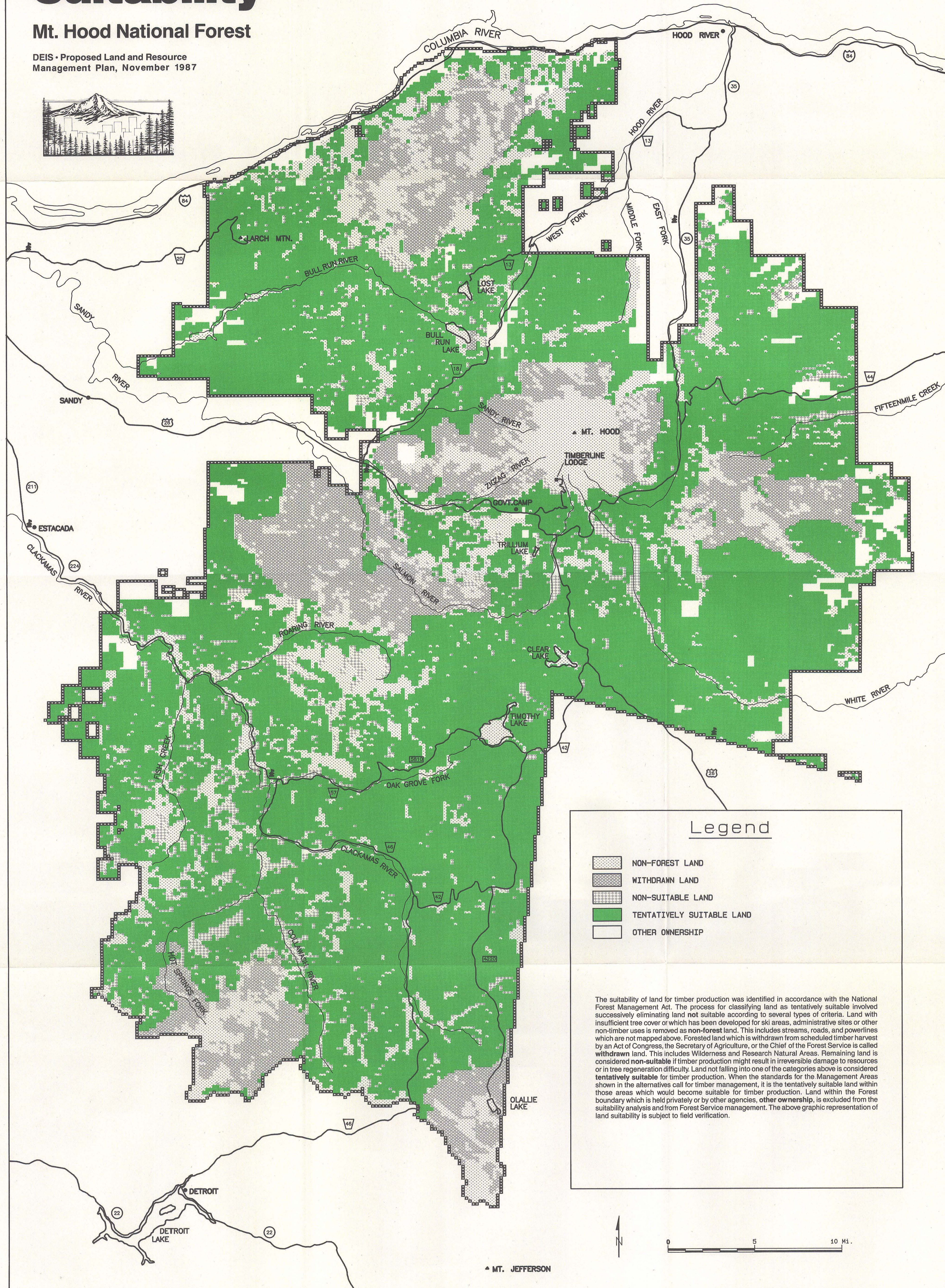
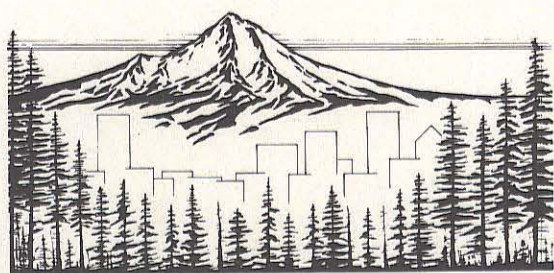
Proposed Land and Resource  
Management Plan

Mt. Hood National Forest





## Mt. Hood National Forest

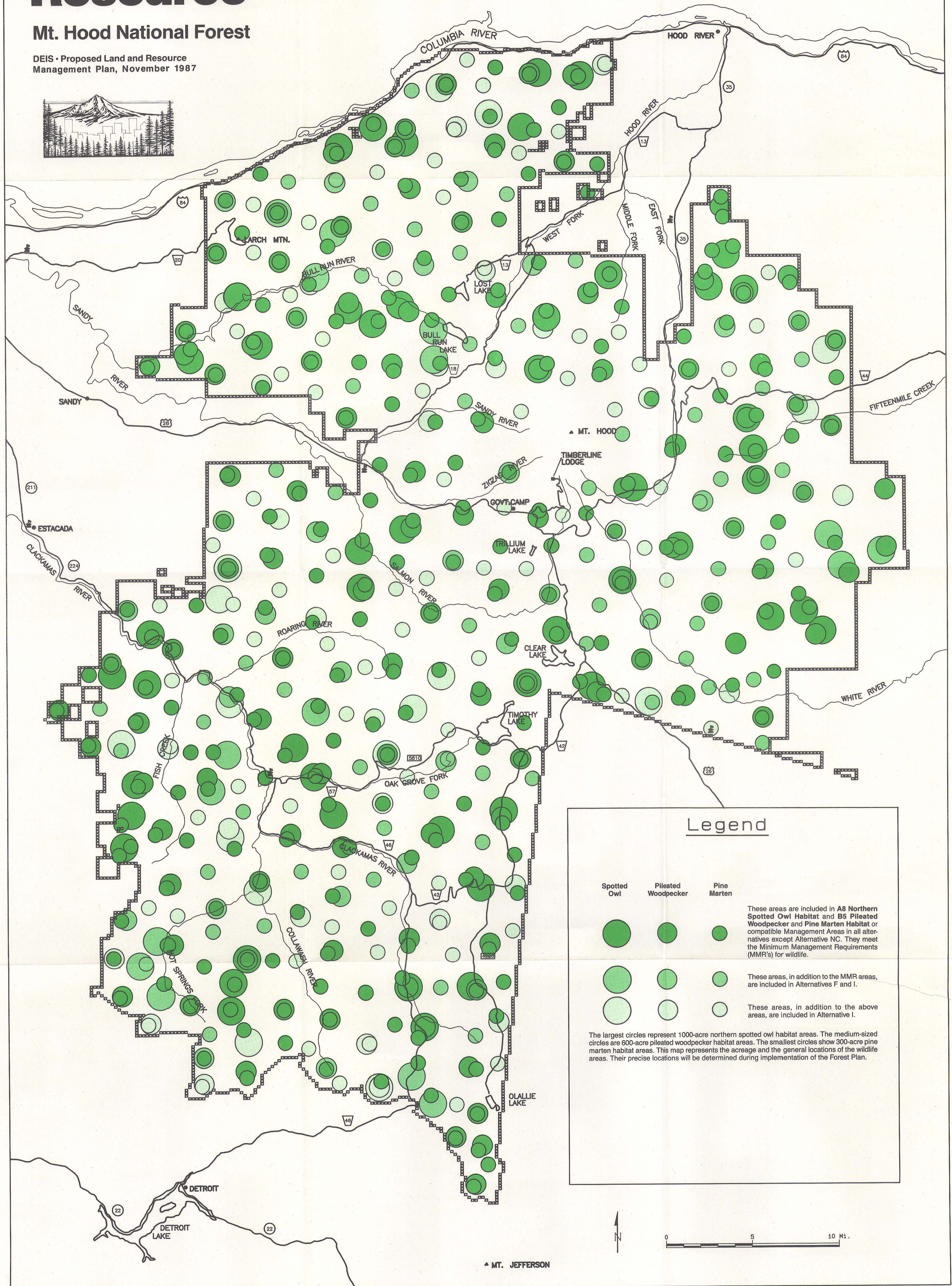
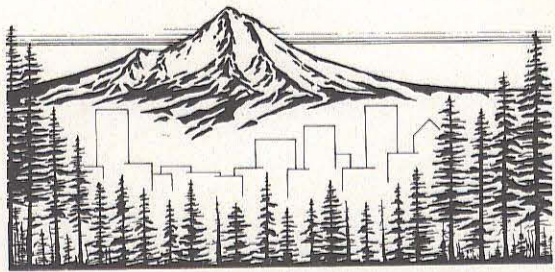
DEIS • Proposed Land and Resource  
Management Plan, November 1987



# Wildlife Resource

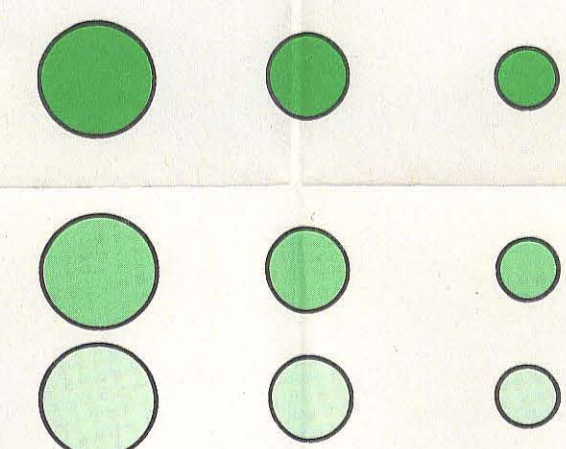
## Mt. Hood National Forest

DEIS • Proposed Land and Resource  
Management Plan, November 1987



### Legend

Spotted Owl      Pileated Woodpecker      Pine Marten



These areas are included in A8 Northern Spotted Owl Habitat and B5 Pileated Woodpecker and Pine Marten Habitat or compatible Management Areas in all alternatives except Alternative NC. They meet the Minimum Management Requirements (MMR's) for wildlife.

These areas, in addition to the MMR areas, are included in Alternatives F and I.

These areas, in addition to the above areas, are included in Alternative I.

The largest circles represent 1000-acre northern spotted owl habitat areas. The medium-sized circles are 600-acre pileated woodpecker habitat areas. The smallest circles show 300-acre pine marten habitat areas. This map represents the acreage and the general locations of the wildlife areas. Their precise locations will be determined during implementation of the Forest Plan.



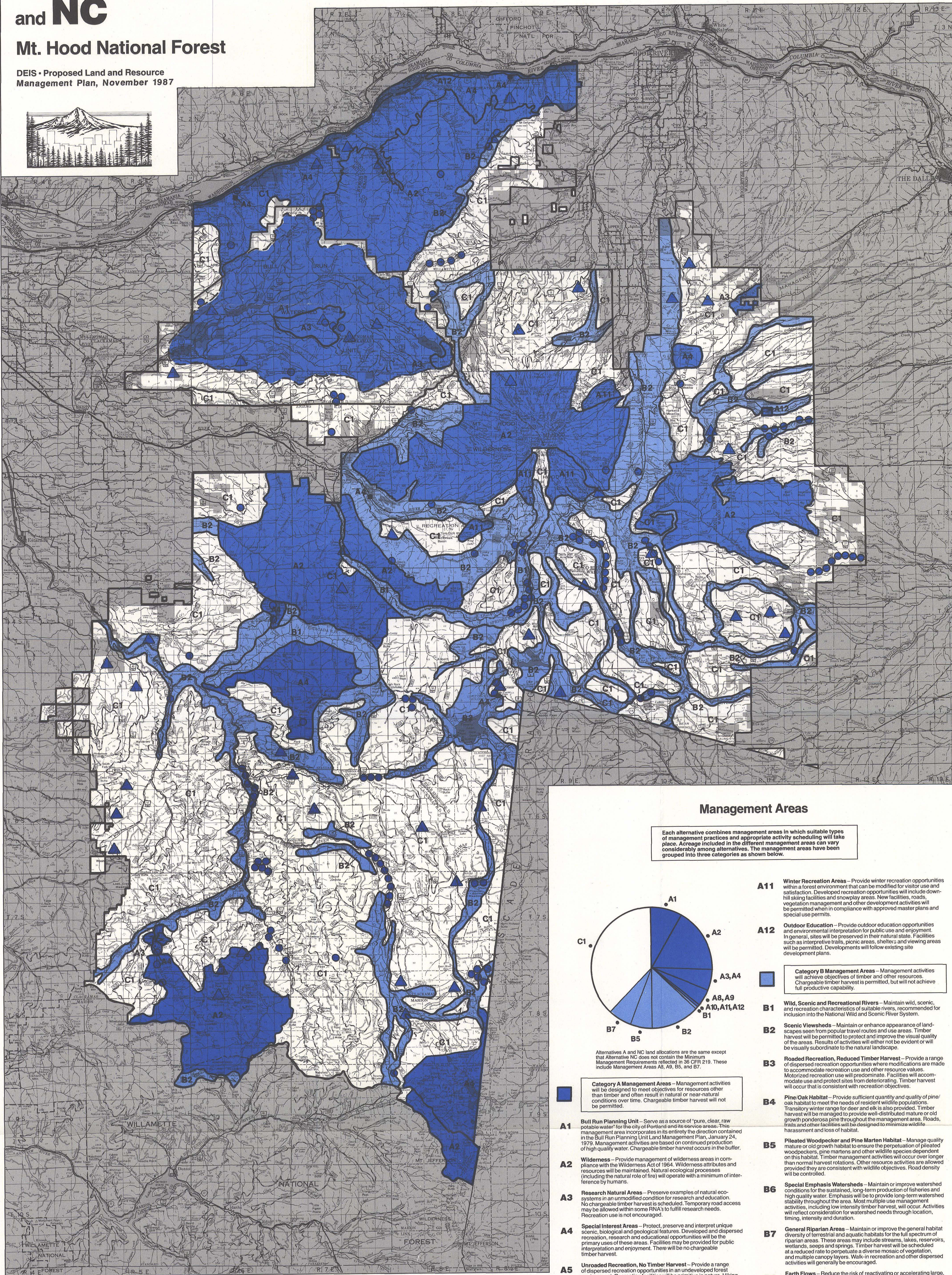
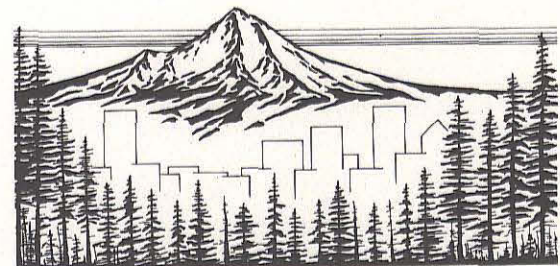
0 5 10 Mi.



# Alternatives A and NC

## Mt. Hood National Forest

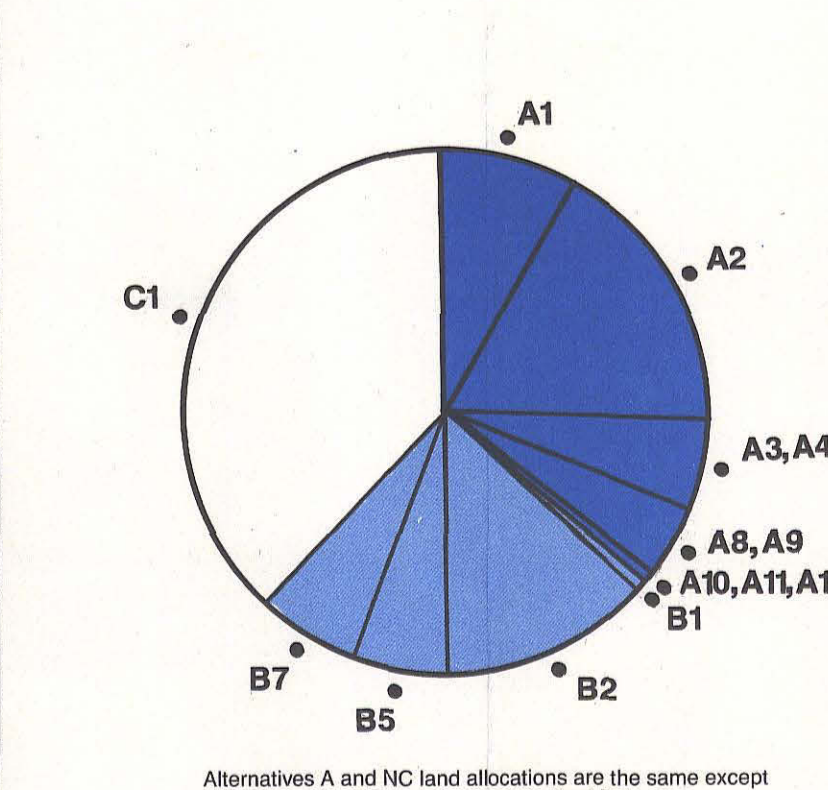
DEIS • Proposed Land and Resource Management Plan, November 1987



U.S. DEPARTMENT OF AGRICULTURE  
FOREST SERVICE  
**MT HOOD NATIONAL FOREST**  
OREGON  
WILLAMETTE MERIDIAN  
1982

### Management Areas

Each alternative combines management areas in which suitable types of management practices and appropriate activity scheduling will take place. Acreage included in the different management areas can vary considerably among alternatives. The management areas have been grouped into three categories as shown below.



**Category A Management Areas** - Management activities will be designed to meet objectives for resources other than timber and often result in natural or near-natural conditions over time. Chargeable timber harvest will not be permitted.

- A1** Bull Run Planning Unit - Serve as a source of "pure, clear, raw potable water" for the city of Portland and its service areas. This management area incorporates in its entirety the direction contained in the Bull Run Planning Unit Land Management Plan, January 24, 1979. Management activities are based on continued production of high quality water. Chargeable timber harvest occurs in the buffer.
- A2** Wilderness - Provide management of wilderness areas in compliance with the Wilderness Act of 1964. Wilderness attributes and resources will be maintained. Natural ecological processes (including the natural role of fire) will operate with a minimum of interference by humans.
- A3** Research Natural Areas - Preserve examples of natural ecosystems in an unmodified condition for research and education. No chargeable timber harvest is scheduled. Temporary road access may be allowed within some RNA's to fulfill research needs. Recreation use is not encouraged.
- A4** Special Interest Areas - Protect, preserve and interpret unique scenic, biological and geological features. Developed and dispersed recreation, research and educational opportunities will be the primary uses of these areas. Facilities may be provided for public interpretation and enjoyment. There will be no chargeable timber harvest.
- A5** Unroaded Recreation, No Timber Harvest - Provide a range of dispersed recreation opportunities in an undeveloped forest environment. Recreation facilities will be primitive in nature. Hiking, camping, horseback riding and other non-motorized recreation activities will be permitted. No new roads will be constructed. There will be no chargeable timber harvest.
- A6** Roaded Recreation, No Timber Harvest - Provide a range of dispersed recreation opportunities within a natural environment that can be modified to accommodate recreation use. Motorized recreation activities will predominate. New roads and trails may be built. There will be no chargeable timber harvest.
- A7** Old-Growth - Preserve old-growth forest environments for aesthetic and scenic values, habitat maintenance and other uses. Activities will include walk-in dispersed recreation, habitat improvement projects for fish and wildlife, and educational or interpretive activities. There will be no chargeable timber harvest.
- A8** Northern Spotted Owl Habitat - Protect and manage old growth habitat for maintaining a viable population of Northern Spotted Owls and other wildlife species dependent on old growth habitat. Limited activities such as dispersed recreation and livestock grazing will be allowed provided habitat conditions can be maintained. No new roads will be constructed and existing road use will be controlled. There will be no chargeable timber harvest.
- A9** Key Site Riparian - Maintain or improve the diversity, high quality and key role of selected riparian areas in providing for the production of riparian resources. Soil, water, fish and wildlife management activities will predominate. Dispersed, walk-in recreation and interpretation will be encouraged. There will be no chargeable timber harvest. Roaded and developed recreation will be discouraged.
- A10** Developed Recreation Sites - Provide a full range of outdoor recreation opportunities at accessible and appropriately designed developed recreation sites. Physical improvements and facilities will be provided and maintained. Activities often involve widespread use of motorized vehicles. High concentrations of visitors are expected to occur around developments.

- A11** Winter Recreation Areas - Provide winter recreation opportunities within a forest environment that can be modified for visitor use and satisfaction. Developed recreation opportunities will include downhill skiing facilities and snowplay areas. New facilities, roads, vegetation management and other development activities will be permitted when in compliance with approved master plans and special use permits.
- A12** Outdoor Education - Provide outdoor education opportunities and environmental interpretation for public use and enjoyment. In general, sites will be preserved in their natural state. Facilities such as interpretive trails, picnic areas, shelters and viewing areas will be permitted. Developments will follow existing site development plans.
- Category B Management Areas** - Management activities will achieve objectives of timber and other resources. Chargeable timber harvest is permitted, but will not achieve full productive capability.
- B1** Wild, Scenic and Recreational Rivers - Maintain wild, scenic, and recreation characteristics of suitable rivers, recommended for inclusion into the National Wild and Scenic River System.
- B2** Scenic Viewsheds - Maintain or enhance appearance of landscapes seen from popular travel routes and use areas. Timber harvest will be permitted to protect and improve the visual quality of the areas. Results of activities will either not be evident or will be visually subordinate to the natural landscape.
- B3** Roaded Recreation, Reduced Timber Harvest - Provide a range of dispersed recreation opportunities where modifications are made to accommodate recreation use and other resource values. Motorized recreation use will predominate. Facilities will accommodate use and protect sites from deteriorating. Timber harvest will occur that is consistent with recreation objectives.
- B4** Pine Oak Habitat - Provide sufficient quantity and quality of pine/oak habitat to meet the needs of resident wildlife populations. Transitory winter range for deer and elk is also provided. Timber harvest will be managed to provide well-distributed mature or old growth ponderosa pine throughout the management area. Roads, trails and other facilities will be designed to minimize wildlife harassment and loss of habitat.
- B5** Pileated Woodpecker and Pine Marten Habitat - Manage quality mature or old growth habitat to ensure the perpetuation of pileated woodpeckers, pine martens and other wildlife species dependent on this habitat. Timber management activities will occur over longer than normal harvest rotations. Other resource activities are allowed provided they are consistent with wildlife objectives. Road density will be controlled.
- B6** Special Emphasis Watersheds - Maintain or improve watershed conditions for the sustained, long-term production of fisheries and high quality water. Emphasis will be to provide long-term watershed stability throughout the area. Most multiple use management activities, including low intensity timber harvest, will occur. Activities will reflect consideration for watershed needs through location, timing, intensity and duration.
- B7** General Riparian Areas - Maintain or improve the general habitat diversity of terrestrial and aquatic habitats for the full spectrum of riparian areas. These areas may include streams, lakes, reservoirs, wetlands, seeps and springs. Timber harvest will be scheduled at a reduced rate to perpetuate a diverse mosaic of vegetation, and multiple canopy layers. Walk-in recreation and other dispersed activities will generally be encouraged.
- B8** Earth Flows - Reduce the risk of reactivating or accelerating large, slow moving landslide areas, called earth flows. Vegetation will be managed to maintain a majority of the earth flow in a forested condition at all times. Openings created by harvesting, roading, wildlife improvement projects or other activities will be limited in size.
- B9** Wildlife-Visual Area - Provide quality habitat for big game and riparian dependent species, while maintaining visual quality. Management will emphasize quality forage and thermal cover for deer and elk. Minimum amounts of forage and old growth will be available at all times. Harvest will be restricted seasonally. Visual quality standards will be met where landscapes can be seen from popular travel routes. New roads will be allowed, but closed after management activities.
- Category C Management Areas** - Chargeable timber harvest to achieve an economically efficient sustained yield of timber, while meeting minimum legal requirements for protection of other resources.
- C1** Timber Emphasis - Intensively manage for timber production while providing transitory forage production and opportunities for public use. A wide range of silvicultural practices will be applied including clearcutting, thinning and planting. Forage will be available for use by livestock and big game. Recreation activities will focus on use of existing or new road systems, dispersed camping and off-road vehicle use.

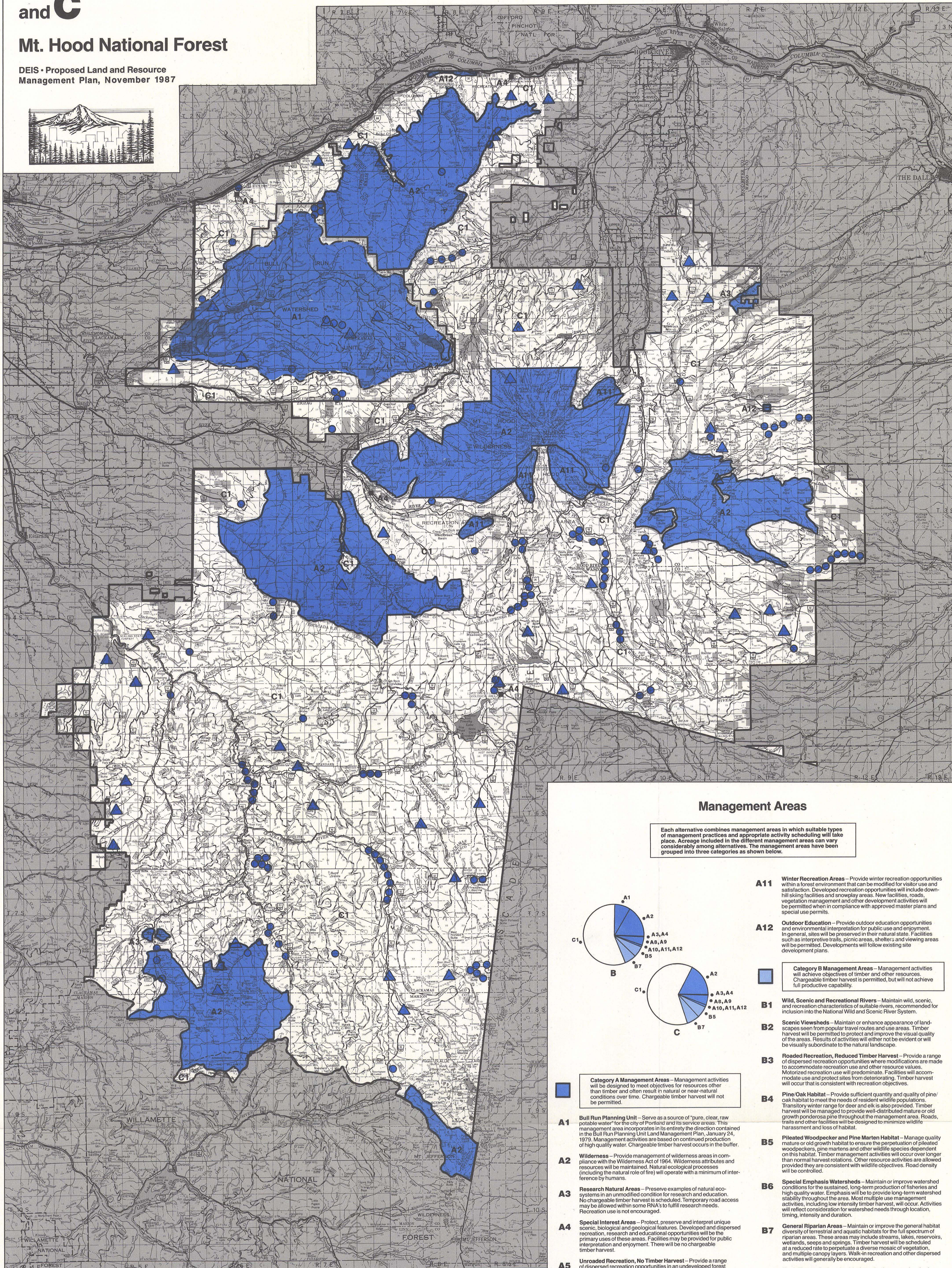
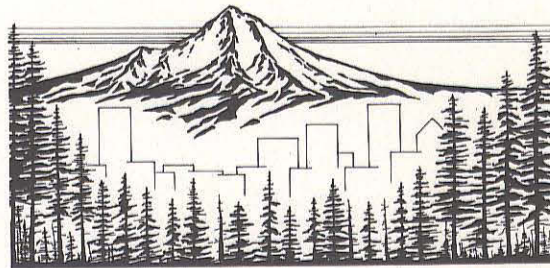
Two management areas are not shown on this map. B5 Pileated Woodpecker and Pine Marten Habitat consists of areas which are illustrated on the Wildlife Resource map in this packet. B7 General Riparian areas cannot be effectively portrayed at this map scale.



# Alternatives B and C

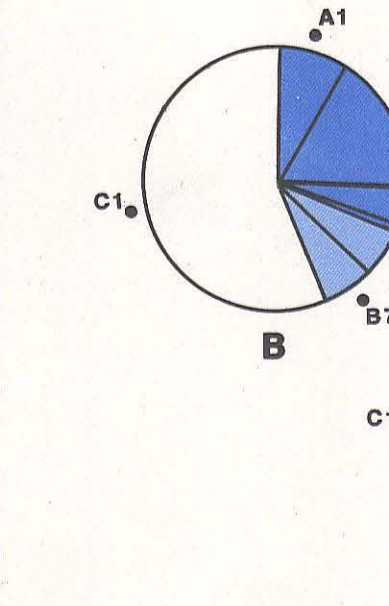
## Mt. Hood National Forest

DEIS • Proposed Land and Resource Management Plan, November 1987



### Management Areas

Each alternative combines management areas in which suitable types of management practices and appropriate activity scheduling will take place. Areas included in the different management areas can vary considerably among alternatives. The management areas have been grouped into three categories as shown below.



**Category A Management Areas** – Management activities will be designed to meet objectives for resources other than timber and often result in natural or near-natural conditions over time. Chargeable timber harvest will not be permitted.

- A1 Bull Run Planning Unit** – Serve as a source of "pure, clear, raw potable water" for the city of Portland and its service areas. This management area incorporates in its entirety the direction contained in the Bull Run Planning Unit Land Management Plan, January 24, 1979. Management activities are based on continued production of high quality water. Chargeable timber harvest occurs in the buffer.
- A2 Wilderness** – Provide management of wilderness areas in compliance with the Wilderness Act of 1964. Wilderness attributes and resources will be maintained. Natural ecological processes (including the natural role of fire) will operate with a minimum of interference by humans.
- A3 Research Natural Areas** – Preserve examples of natural ecosystems in an unmodified condition for research and education. No chargeable timber harvest is scheduled. Temporary road access may be allowed within some RNAs to fulfill research needs. Recreation use is not encouraged.
- A4 Special Interest Areas** – Protect, preserve and interpret unique scenic, biological and geological features. Developed and dispersed recreation, research and educational opportunities will be the primary uses of these areas. Facilities may be provided for public interpretation and enjoyment. There will be no chargeable timber harvest.
- A5 Unroaded Recreation, No Timber Harvest** – Provide a range of dispersed recreation opportunities in an underdeveloped forest environment. Recreation facilities will be primitive in nature. Hiking, camping, horseback riding and other non-motorized recreation activities will predominate. No new roads and trails will be constructed. There will be no chargeable timber harvest.
- A6 Roaded Recreation, No Timber Harvest** – Provide a range of dispersed recreation opportunities within a natural environment that can be modified to accommodate recreation use. Motorized recreation activities will predominate. New roads and trails may be built. There will be no chargeable timber harvest.
- A7 Old-Growth** – Preserve old-growth forest environments for aesthetic and scenic values, habitat maintenance and other uses. Activities will include walk-in dispersed recreation, habitat improvement projects for fish and wildlife, and educational or interpretive activities. There will be no chargeable timber harvest.
- A8 Northern Spotted Owl Habitat** – Protect and manage old growth habitat for maintaining a viable population of Northern Spotted Owls and other wildlife species dependent on old growth habitat. Limited activities such as dispersed recreation and livestock grazing will be allowed provided habitat conditions can be maintained. No new roads will be constructed and existing road use will be controlled. There will be no chargeable timber harvest.
- A9 Key Site Riparian** – Maintain or improve the diversity, high quality and key role of selected riparian areas in providing for the production of riparian resources. Soil, water, fish and wildlife management activities will predominate. Dispersed, walk-in recreation and interpretation will be encouraged. There will be no chargeable timber harvest. Roaded and developed recreation will be discouraged.
- A10 Developed Recreation Sites** – Provide a full range of outdoor recreation opportunities at accessible and appropriately designed developed recreation sites. Physical improvements and facilities will be provided and maintained. Activities often involve widespread use of motorized vehicles. High concentrations of visitors are expected to occur around developments.

**Category B Management Areas** – Management activities will achieve objectives of timber and other resources. Chargeable timber harvest is permitted, but will not achieve full productive capability.

- B1 Wild, Scenic and Recreational Rivers** – Maintain wild, scenic, and recreation characteristics of suitable rivers, recommended for inclusion into the National Wild and Scenic River System.
- B2 Scenic Viewsheds** – Maintain or enhance appearance of landscapes seen from popular travel routes and use areas. Timber harvest will be permitted to protect and improve the visual quality of the areas. Results of activities will either not be evident or will be visually subordinate to the natural landscape.
- B3 Roaded Recreation, Reduced Timber Harvest** – Provide a range of dispersed recreation opportunities where modifications are made to accommodate recreation use and other resource values. Motorized recreation use will predominate. Facilities will accommodate use and protect sites from deteriorating. Timber harvest will occur that is consistent with recreation objectives.
- B4 Pine/Oak Habitat** – Provide sufficient quantity and quality of pine/oak habitat to meet the needs of resident wildlife populations. Transitory winter range for deer and elk is also provided. Timber harvest will be managed to provide well-distributed mature or old growth ponderosa pine throughout the management area. Roads, trails and other facilities will be designed to minimize wildlife harassment and loss of habitat.
- B5 Pileated Woodpecker and Pine Marten Habitat** – Manage quality mature or old growth habitat to ensure the perpetuation of pileated woodpeckers, pine martens and other wildlife species dependent on this habitat. Timber management activities will occur over longer than normal harvest rotations. Other resource activities are allowed provided they are consistent with wildlife objectives. Road density will be controlled.
- B6 Special Emphasis Watersheds** – Maintain or improve watershed conditions for the sustained, long-term production of fisheries and high quality water. Emphasis will be to provide long-term watershed stability throughout the area. Most multiple use management activities, including low intensity timber harvest, will occur. Activities will reflect consideration for watershed needs through location, timing, intensity and duration.
- B7 General Riparian Areas** – Maintain or improve the general habitat diversity of terrestrial and aquatic habitats for the full spectrum of riparian areas. These areas may include streams, lakes, reservoirs, wetlands, seeps and springs. Timber harvest will be scheduled at a reduced rate to perpetuate a diverse mosaic of vegetation, and multiple canopy layers. Walk-in recreation and other dispersed activities will generally be encouraged.
- B8 Earth Flows** – Reduce the risk of reactivating or accelerating large, slow moving landslide areas, called earth flows. Vegetation will be managed to maintain a majority of the earth flow in a forested condition at all times. Openings created by harvesting, roading, wildlife improvement projects or other activities will be limited in size.
- B9 Wildlife-Visual Area** – Provide quality habitat for big game and riparian dependent species, while maintaining visual quality. Management will emphasize quality forage and thermal cover for deer and elk. Minimum amounts of forage and old growth will be available at all times. Harvest will be restricted seasonally. Visual quality standards will be met where landscapes can be seen from popular travel routes. New roads will be allowed, but closed after management activities.

**Category C Management Areas** – Chargeable timber harvest to achieve an economically efficient sustained yield of timber, while meeting minimum legal requirements for protection of other resources.

- C1 Timber Emphasis** – Intensively manage for timber production while providing transitory forage production and opportunities for public use. A wide range of silvicultural practices will be applied including clearcutting, thinning and planting. Forage will be available for use by livestock and big game. Recreation activities will focus on use of existing or new road systems, dispersed camping and off-road vehicle use.

Two management areas are not shown on this map. **B5 Pileated Woodpecker and Pine Marten Habitat** consists of areas which are illustrated on the Wildlife Resource map in this packet. **B7 General Riparian Areas** cannot be effectively portrayed at this map scale.

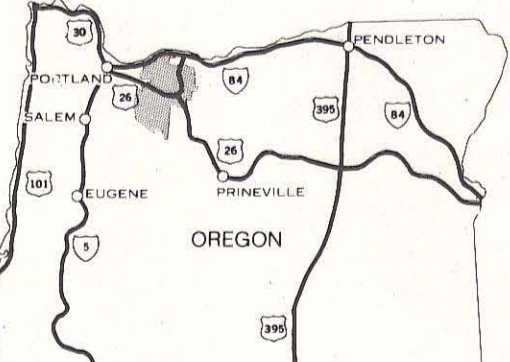
U.S. DEPARTMENT OF AGRICULTURE  
FOREST SERVICE  
MT HOOD NATIONAL FOREST  
OREGON  
WILLAMETTE MERIDIAN  
1982



- LEGEND**
- Mt. Hood National Forest Boundary
  - Adjacent National Forest Boundary
  - County Boundary Line
  - Special Area Boundary Line
  - Regional District Boundary
  - District Ranger Office
  - Other Forest Service Facility
  - Horizontal Control Station on Permanent Leveling Station
  - TV Tower
  - Locust or Locust Object
  - Horizontal Control Station
  - Forest Supervisor's Office
  - Paved Road
  - All Weather Road
  - Dirt Road
  - Primitive Road
  - Trail
  - Pacific Crest National Scenic Trail
  - Railroad
  - Power Transmission Line
  - Interstate Highway
  - U.S. Highway
  - Oregon State Highway
  - Washington State Highway
  - National Forest Primary Route
  - Forest Route
  - Recreation Site, Forest Service
  - Recreation Site, other than Forest Service
  - Mine, Quarry or Gravel Pit
  - School or Church
  - Gate
  - Gaging Station
  - Non Forest Land

SCALE 3/8" = 1 MILE

### KEY MAP

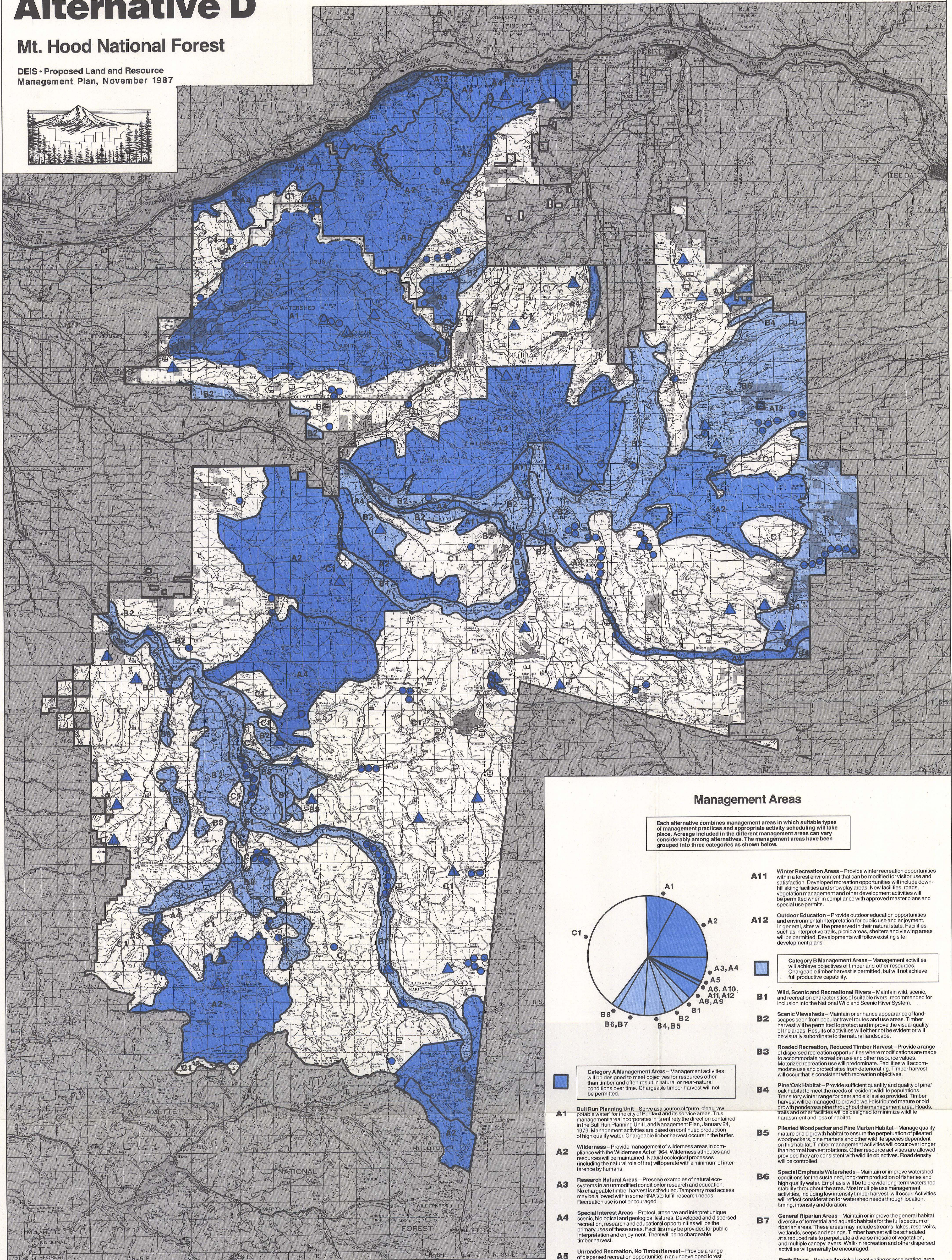
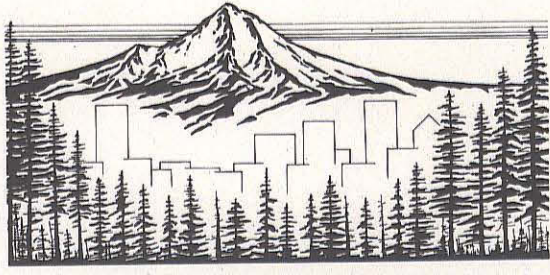




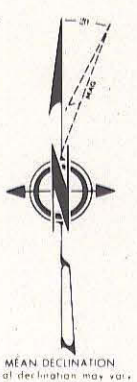
# Alternative D

## Mt. Hood National Forest

DEIS • Proposed Land and Resource Management Plan, November 1987



U.S. DEPARTMENT OF AGRICULTURE  
FOREST SERVICE  
**MT HOOD NATIONAL FOREST**  
OREGON  
WILLAMETTE MERIDIAN  
1982



- Mt. Hood National Forest Boundary
- Adjacent National Forest Boundary
- State Boundary Line
- County Boundary Line
- Special Area Boundary Line
- Ranger District Boundary
- District Ranger Office
- Other Forest Service Facility
- Horizontal Control Station on Permanent Locust Station
- Horizontal Control Station
- Forest Supervisor's Office
- Paved Road
- All-Weather Road
- Dirt Road
- Primitive Road
- Trail
- Pacific Crest National Scenic Trail
- Power Transmission Line
- 24" Water
- School or Church
- Gate
- Gauging Station
- Non-Forest Land
- Interstate Highway
- U.S. Highway
- Oregon State Highway
- Washington State Highway
- National Forest Primary Route
- Forest Road
- Recreation Site, Forest Service
- Recreation Site, other than Forest Service
- Mine, Quarry or Gravel Pit

### LEGEND

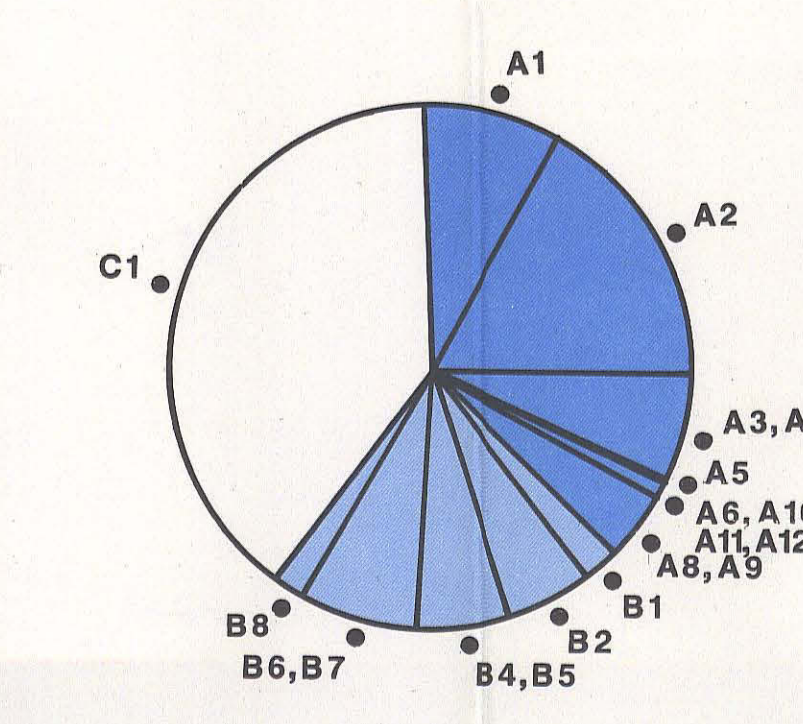
SCALE 3/8" = 1 MILE

### KEY MAP



### Management Areas

Each alternative combines management areas in which suitable types of management practices and appropriate activity scheduling will take place. Acreage included in the different management areas can vary considerably among alternatives. The management areas have been grouped into three categories as shown below.



**Category A Management Areas** – Management activities will be designed to meet objectives for resources other than timber and often result in natural or near-natural conditions over time. Chargeable timber harvest will not be permitted.

- A1** Bull Run Planning Unit – Serve as a source of "pure, clear, raw" water for the city of Portland and its service areas. The management area incorporates in its entirety the direction contained in the Bull Run Planning Unit Land Management Plan, January 24, 1979. Management activities are based on continued production of high quality water. Chargeable timber harvest occurs in the buffer.
- A2** Wilderness – Provide management of wilderness areas in compliance with the Wilderness Act of 1964. Wilderness attributes and resources will be maintained. Natural ecological processes (including the natural role of fire) will operate with a minimum of interference by humans.
- A3** Research Natural Areas – Preserve examples of natural ecosystems in an unmodified condition for research and education. No chargeable timber harvest is scheduled. Temporary road access may be allowed within some RNA's to fulfill research needs. Recreation use is not encouraged.
- A4** Special Interest Areas – Protect, preserve and interpret unique scenic, biological and geological features. Developed and dispersed recreation, research and educational opportunities will be the primary uses of these areas. Facilities may be provided for public interpretation and enjoyment. There will be no chargeable timber harvest.
- A5** Unroaded Recreation, No Timber Harvest – Provide a range of dispersed recreation opportunities in an undeveloped forest environment. Recreation facilities will be primitive in nature. Hiking, camping, horseback riding and other non-motorized recreation activities will predominate. New roads and trails may be built. There will be no chargeable timber harvest.
- A6** Roaded Recreation, No Timber Harvest – Provide a range of dispersed recreation opportunities within a natural environment that can be modified to accommodate recreation use. Motorized recreation activities will predominate. New roads and trails may be built. There will be no chargeable timber harvest.
- A7** Old-Growth – Preserve old-growth forest environments for aesthetic and scenic values, habitat maintenance and other uses. Activities will include walk-in dispersed recreation, habitat improvement projects for fish and wildlife, and educational or interpretive activities. There will be no chargeable timber harvest.
- A8** Northern Spotted Owl Habitat – Protect and manage old growth habitat for maintaining a viable population of Northern Spotted Owls and other wildlife species dependent on old growth habitat. Limited activities such as dispersed recreation and livestock grazing will be allowed provided habitat conditions can be maintained. No new roads will be constructed and existing road use will be controlled. There will be no chargeable timber harvest.
- A9** Key Site Riparian – Maintain or improve the diversity, high quality and key role of selected riparian areas in providing for the production of riparian resources. Soil, water, fish and wildlife management activities will predominate. Dispersed recreation and interpretation will be encouraged. There will be no chargeable timber harvest. Roading and developed recreation will be discouraged.
- A10** Developed Recreation Sites – Provide a full range of outdoor recreation opportunities at accessible and appropriately designed developed recreation sites. Physical improvements and facilities will be provided and maintained. Activities often involve widespread use of motorized vehicles. High concentrations of visitors are expected to occur around developments.

- A11** Winter Recreation Areas – Provide winter recreation opportunities within a forest environment that can be modified for visitor use and satisfaction. Developed recreation opportunities will include downhill skiing facilities and snowplay areas. New facilities, roads, vegetation management and other development activities will be permitted when in compliance with approved master plans and special use permits.
- A12** Outdoor Education – Provide outdoor education opportunities and environmental interpretation for public use and enjoyment. In general, sites will be preserved in their natural state. Facilities such as interpretive trails, picnic areas, shelters and viewing areas will be permitted. Developments will follow existing site development plans.
- Category B Management Areas** – Management activities will achieve objectives of timber and other resources. Chargeable timber harvest is permitted, but will not achieve full productive capability.
- B1** Wild, Scenic and Recreational Rivers – Maintain wild, scenic, and recreation characteristics of suitable rivers, recommended for inclusion into the National Wild and Scenic River System.
- B2** Scenic Viewsheds – Maintain or enhance appearance of landscapes seen from popular travel routes and use areas. Timber harvest will be permitted to protect and improve the visual quality of the areas. Results of activities will either not be evident or will be visually subordinate to the natural landscape.
- B3** Roaded Recreation, Reduced Timber Harvest – Provide a range of dispersed recreation opportunities where modifications are made to accommodate recreation use and other resource values. Motorized recreation use will predominate. Facilities will accommodate use and protect sites from deteriorating. Timber harvest will occur that is consistent with recreation objectives.
- B4** Pine/Oak Habitat – Provide sufficient quantity and quality of pine/oak habitat to meet the needs of resident wildlife populations. Transitory winter range for deer and elk is also provided. Timber harvest will be managed to provide well-distributed mature or old growth ponderosa pine throughout the management area. Roads, trails and other facilities will be designed to minimize wildlife harassment and loss of habitat.
- B5** Pileated Woodpecker and Pine Marten Habitat – Manage quality mature or old growth habitat to ensure the perpetuation of pileated woodpeckers, pine martens and other wildlife species dependent on this habitat. Timber management activities will occur over longer than normal harvest rotations. Other resource activities are allowed provided they are consistent with wildlife objectives. Road density will be controlled.
- B6** Special Emphasis Watersheds – Maintain or improve watershed conditions for the sustained, long-term production of fisheries and high quality water. Emphasis will be to provide long-term watershed stability throughout the area. Most multiple use management activities, including low intensity timber harvest, will occur. Activities will reflect consideration for watershed needs through location, timing, intensity and duration.
- B7** General Riparian Areas – Maintain or improve the general habitat diversity of terrestrial and aquatic habitats for the full spectrum of riparian areas. These areas may include streams, lakes, reservoirs, wetlands, seeps and springs. Timber harvest will be scheduled at a reduced rate to perpetuate a diverse mosaic of vegetation, and multiple canopy layers. Walk-in recreation and other dispersed activities will generally be encouraged.
- B8** Earth Flows – Reduce the risk of reactivating or accelerating large, slow moving landslide areas, called earth flows. Vegetation will be managed to maintain a majority of the earth flow in a forested condition at all times. Openings created by harvesting, roading, wildlife improvement projects or other activities will be limited in size.
- B9** Wildlife-Visual Area – Provide quality habitat for big game and riparian dependent species, while maintaining visual quality. Management will emphasize quality forage and thermal cover for deer and elk. Minimum amounts of forage and old growth will be available at all times. Harvest will be restricted seasonally. Visual quality standards will be met where landscapes can be seen from popular travel routes. New roads will be allowed, but closed after management activities.
- Category C Management Areas** – Chargeable timber harvest to achieve an economically efficient sustained yield of timber, while meeting minimum legal requirements for protection of other resources.
- C1** Timber Emphasis – Intensively manage for timber production while providing transitory forage production and opportunities for public use. A wide range of silvicultural practices will be applied including clearcutting, thinning and planting. Forages will be available for use by livestock and big game. Recreation activities will focus on use of existing or new road systems, dispersed camping and off-road vehicle use.

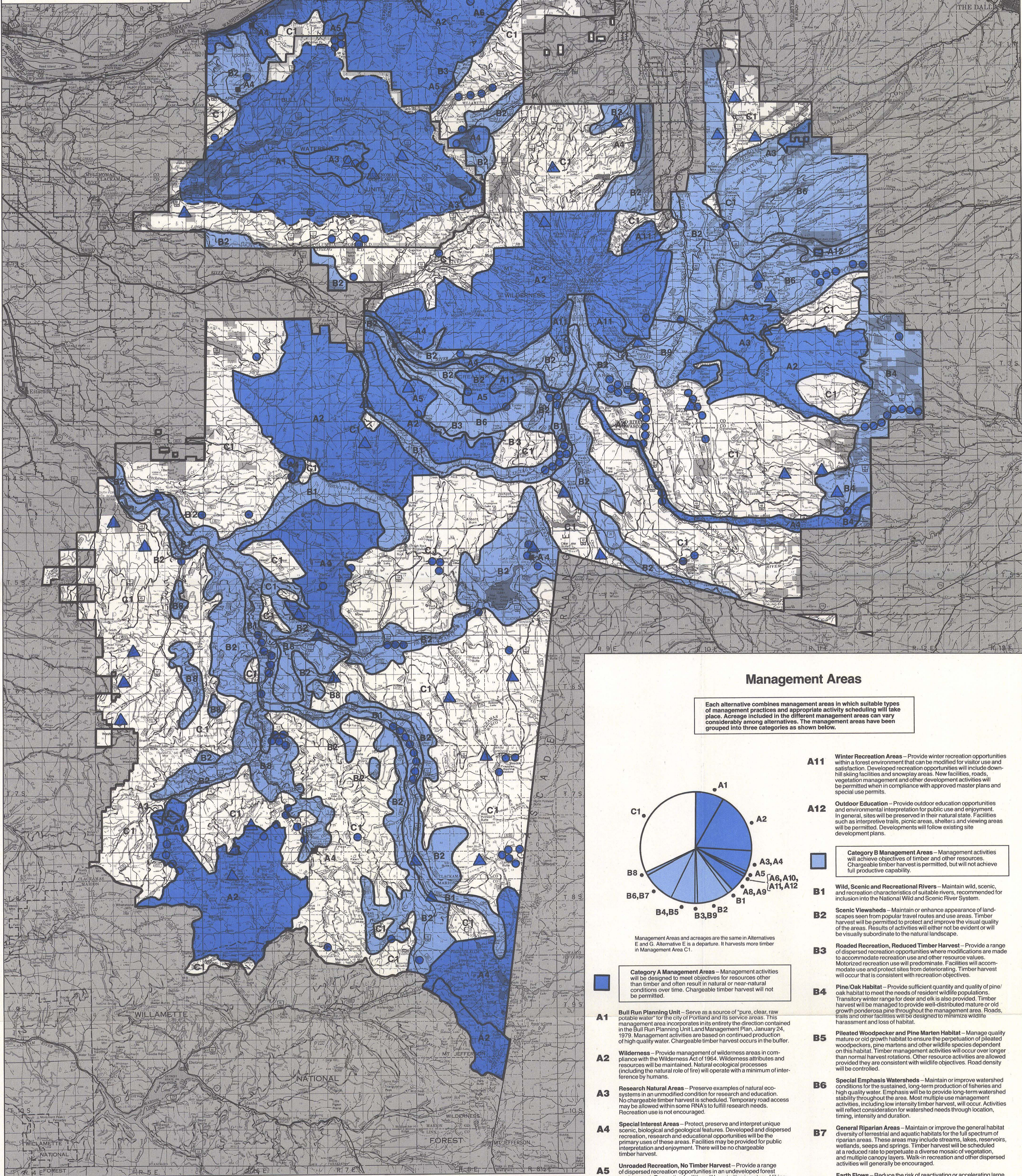
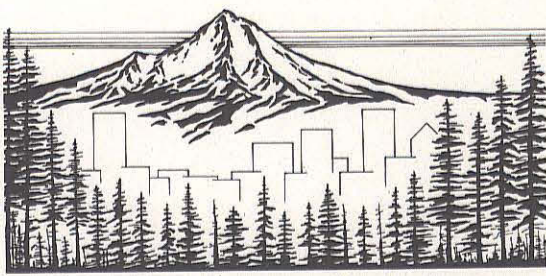
Two management areas are not shown on this map. B5 Pileated Woodpecker and Pine Marten Habitat consists of areas which are illustrated on the Wildlife Resource map in this packet. B7 General Riparian areas cannot be effectively portrayed at this map scale.



# Alternatives G and E (Preferred)

## Mt. Hood National Forest

DEIS - Proposed Land and Resource  
Management Plan, November 1987



U.S. DEPARTMENT OF AGRICULTURE  
FOREST SERVICE

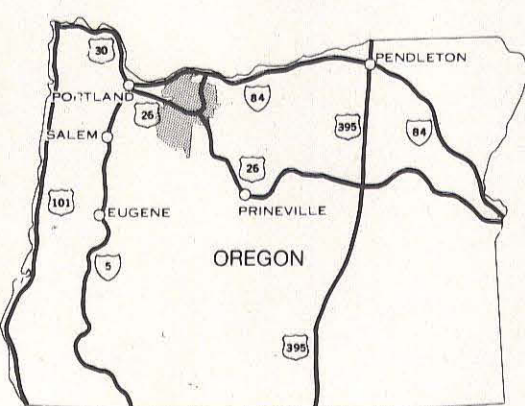
MT HOOD NATIONAL FOREST  
OREGON  
WILLAMETTE MERIDIAN  
1862

### LEGEND

- |   |                                       |  |                    |
|---|---------------------------------------|--|--------------------|
| — Mt. Hood National Forest Boundary                       | — Paved Road                          | — Interstate Highway                         | — School or Church |
| — Adjacent National Forest Boundary                       | — All Weather Road                    | — U.S. Highway                               | — State            |
| — State Boundary Line                                     | — Dirt Road                           | — Oregon State Highway                       | — Banning Station  |
| — County Boundary Line                                    | — Primitive Road                      | — Washington State Highway                   | — Non Forest Land  |
| — Special Area Boundary Line                              | — Trail                               | — National Forest Primary Road               |                    |
| — Ranger District Boundary                                | — Pacific Crest National Scenic Trail | — Forest Road                                |                    |
| — District Ranger Office                                  | — Railroad                            | — Recreation Site, Forest Service            |                    |
| — Other Forest Service Facility                           | — Power Transmission Line             | — Recreation Site, other than Forest Service |                    |
| — Horizontal Control Station on Permanent Control Station | — TV Tower                            | — Mine, Quarry or Gravel Pit                 |                    |
| — Horizontal Control Station                              | — Forest Supervisor's Office          |  |                    |

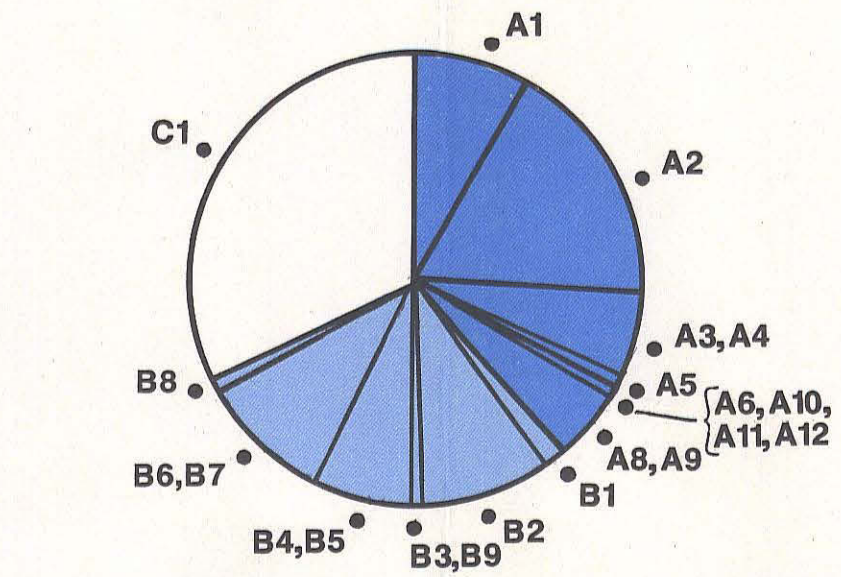
SCALE 3/8" = 1 MILE

### KEY MAP



### Management Areas

Each alternative combines management areas in which suitable types of management practices and appropriate activity scheduling will take place. Acreage included in the different management areas can vary considerably among alternatives. The management areas have been grouped into three categories as shown below.



Management Areas and acreages are the same in Alternatives E and G. Alternative E is a departure. It harvests more timber in Management Area C1.

**Category A Management Areas** - Management activities will be designed to meet objectives for resources other than timber and often result in natural or near-natural conditions over time. Chargeable timber harvest will not be permitted.

- A1 Bull Run Planning Unit** - Serve as a source of "pure, clear, raw potable water" for the city of Portland and its service areas. This management area incorporates the entire direction contained in the Bull Run Planning Unit Land Management Plan, January 24, 1979. Management activities are based on continued production of high quality water. Chargeable timber harvest occurs in the buffer.
- A2 Wilderness** - Provide management of wilderness areas in compliance with the Wilderness Act of 1964. Wilderness attributes and resources will be maintained. Natural ecological processes (including the natural role of fire) will operate with a minimum of interference by humans.
- A3 Research Natural Areas** - Preserve examples of natural ecosystems in an unmodified condition for research and education. No chargeable timber harvest is scheduled. Temporary road access may be allowed within some RNAs to fulfill research needs. Recreation use is not encouraged.
- A4 Special Interest Areas** - Protect, preserve and interpret unique scenic, biological and geological features. Developed and dispersed recreation, research and educational opportunities will be the primary uses of these areas. Facilities may be provided for public interpretation and enjoyment. There will be no chargeable timber harvest.
- A5 Unroaded Recreation, No Timber Harvest** - Provide a range of dispersed recreation opportunities in an undeveloped forest environment. Recreation facilities will be primitive in nature. Hiking, camping, horseback riding and other non-motorized recreation activities will predominate. No new roads will be constructed. There will be no chargeable timber harvest.
- A6 Roaded Recreation, No Timber Harvest** - Provide a range of dispersed recreation opportunities in an undeveloped forest environment that can be modified to accommodate recreation use. Motorized recreation activities will predominate. New roads and trails may be built. There will be no chargeable timber harvest.
- A7 Old-Growth** - Preserve old-growth forest environments for aesthetic and scenic values, habitat maintenance and other uses. Activities will include walk-in dispersed recreation, habitat improvement projects for fish and wildlife, and educational or interpretive activities. There will be no chargeable timber harvest.
- A8 Northern Spotted Owl Habitat** - Protect and manage old growth and other wildlife species dependent on old growth habitat. Limited activities such as dispersed recreation and livestock grazing will be allowed provided habitat conditions can be maintained. No new roads will be constructed and existing road use will be controlled. There will be no chargeable timber harvest.
- A9 Key Site Riparian** - Maintain or improve the diversity, high quality and key role of selected riparian areas in providing for the production of riparian resources. Soil, water, fish and wildlife management activities will predominate. Dispersed, walk-in recreation and interpretation will be encouraged. There will be no chargeable timber harvest. Roaded and developed recreation will be discouraged.
- A10 Developed Recreation Sites** - Provide a full range of outdoor recreation opportunities at accessible and appropriately designed developed recreation sites. Physical improvements and facilities will be provided and maintained. Activities often involve widespread use of motorized vehicles. High concentrations of visitors are expected to occur around developments.

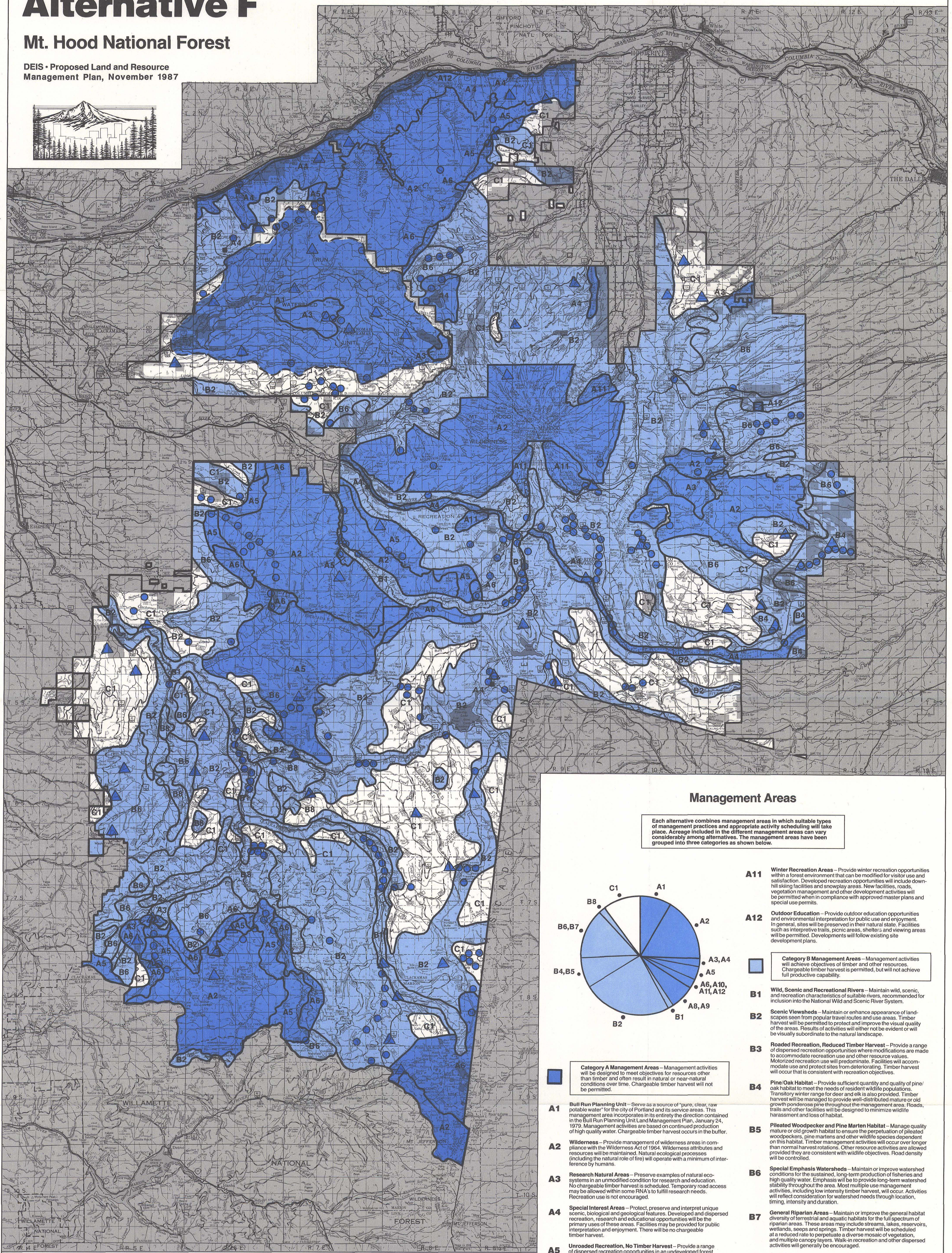
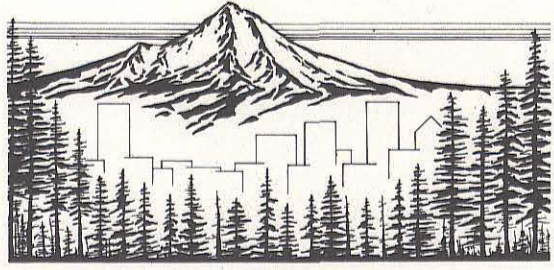
- A11 Winter Recreation Areas** - Provide winter recreation opportunities within a forest environment that can be modified for visitor use and satisfaction. Developed recreation opportunities will include downhill skiing facilities and snowplay areas. New facilities, road, vegetation management and other development activities will be permitted when in compliance with approved master plans and special use permits.
- A12 Outdoor Education** - Provide outdoor education opportunities and environmental interpretation for public use and enjoyment. In general, sites will be preserved in their natural state. Facilities such as interpretive trails, picnic areas, shelters and viewing areas will be permitted. Developments will follow existing site development plans.
- Category B Management Areas** - Management activities will achieve objectives of timber and other resources. Chargeable timber harvest is permitted, but will not achieve full productive capability.
- B1 Wild, Scenic and Recreational Rivers** - Maintain wild, scenic, and recreation characteristics of suitable rivers, recommended for inclusion into the National Wild and Scenic River System.
- B2 Scenic Viewsheds** - Maintain or enhance appearance of landscapes seen from popular travel routes and use areas. Timber harvest will be permitted to provide well-distributed mature or old growth ponderosa pine throughout the management area. Roads, trails and other facilities will be designed to minimize wildlife harassment and loss of habitat.
- B3 Roaded Recreation, Reduced Timber Harvest** - Provide a range of dispersed recreation opportunities where modifications are made to accommodate recreation use and other resource values. Motorized recreation use will predominate. Facilities will accommodate use and protect sites from deteriorating. Timber harvest will occur that is consistent with recreation objectives.
- B4 Pine/Oak Habitat** - Provide sufficient quantity and quality of pine/oak habitat to meet the needs of resident wildlife populations. Transitory winter range for deer and elk is also provided. Timber harvest will be managed to provide well-distributed mature or old growth ponderosa pine throughout the management area. Roads, trails and other facilities will be designed to minimize wildlife harassment and loss of habitat.
- B5 Pileated Woodpecker and Pine Marten Habitat** - Manage quality mature or old growth habitat to ensure the perpetuation of pileated woodpeckers, pine martens and other wildlife species dependent on this habitat. Timber management activities will occur over longer than normal harvest rotations. Other resource activities are allowed provided they are consistent with wildlife objectives. Road density will be controlled.
- B6 Special Emphasis Watersheds** - Maintain or improve watershed conditions for the sustained, long-term production of fisheries and high quality water. Emphasis will be to provide long-term watershed stability throughout the area. Most multiple use management activities, including low intensity timber harvest, will occur. Activities will reflect consideration for watershed needs through location, timing, intensity and duration.
- B7 General Riparian Areas** - Maintain or improve the general habitat diversity of terrestrial and aquatic habitats for the full spectrum of riparian areas. These areas may include streams, lakes, reservoirs, wetlands, seeps and springs. Timber harvest will be scheduled at a reduced rate to perpetuate a diverse mosaic of vegetation, and multiple canopy layers. Walk-in recreation and other dispersed activities will generally be encouraged.
- B8 Earth Flows** - Reduce the risk of reactivating or accelerating large, slow moving landslide areas, called earth flows. Vegetation will be managed to maintain a majority of the earth flow in a forested condition at all times. Openings created by harvesting, roading, wildlife improvement projects or other activities will be limited in size.
- B9 Wildlife-Visual Area** - Provide quality habitat for big game and riparian dependent species, while maintaining visual quality. Management will emphasize quality forage and thermal cover for deer and elk. Minimum amounts of forage and old growth will be available at all times. Harvest will be restricted seasonally. Visual quality standards will be met where landscapes can be seen from popular travel routes. New roads will be allowed, but closed after management activities.
- Category C Management Areas** - Chargeable timber harvest to achieve an economically efficient sustained yield of timber, while meeting minimum legal requirements for protection of other resources.
- C1 Timber Emphasis** - Intensively manage for timber production while providing transitory forage production and opportunities for public use. A wide range of silvicultural practices will be applied including clearcutting, thinning and planting. Forage will be available for use by livestock and big game. Recreation activities will focus on use of existing or new road systems, dispersed camping and off-road vehicle use.

Two management areas are not shown on this map. B5 Pileated Woodpecker and Pine Marten Habitat consists of areas which are illustrated on the Wildlife Resource map in this packet. B7 General Riparian areas cannot be effectively portrayed at this map scale.



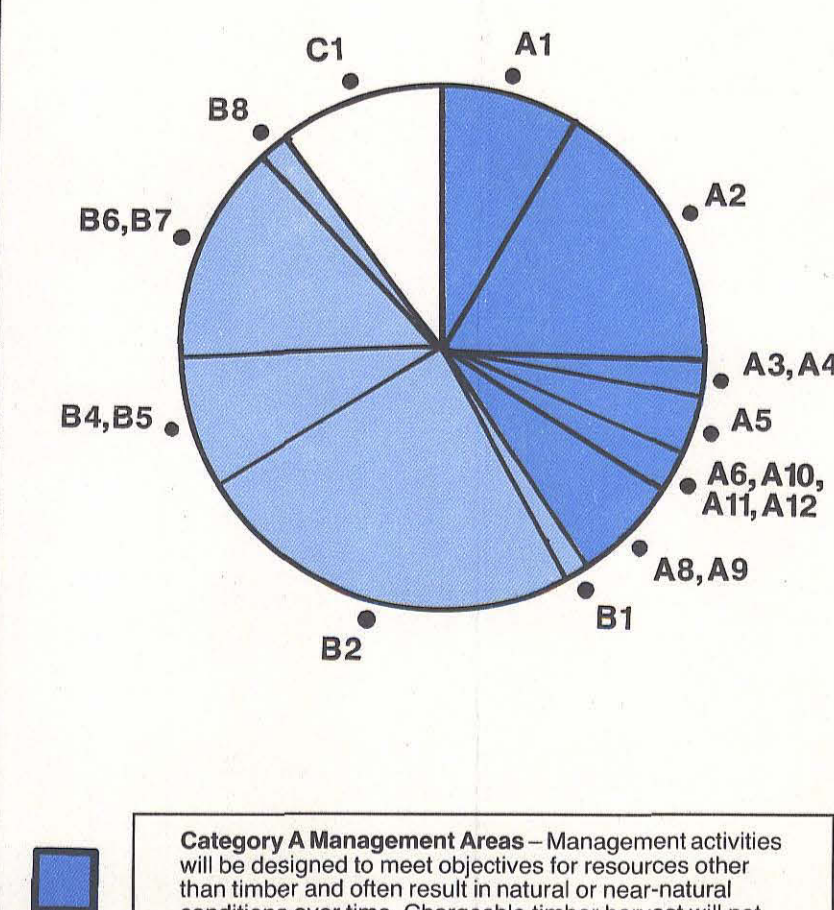
## Mt. Hood National Forest

DEIS • Proposed Land and Resource Management Plan, November 1987



## Management Areas

Each alternative combines management areas in which suitable types of management practices and appropriate activity scheduling will take place. Acreage included in the different management areas can vary considerably among alternatives. The management areas have been grouped into three categories as shown below.



**A1 Bull Run Planning Unit**—Serve as a source of "pure, clear, raw potable water" for the city of Portland and its service areas. This management area incorporates in its entirety the direction contained in the Bull Run Planning Unit Land Management Plan, January 24, 1979. Management activities are based on continued production of high quality water. Chargeable timber harvest occurs in the buffer

**A2 Wilderness**—Provide management of wilderness areas in compliance with the Wilderness Act of 1964. Wilderness attributes and resources will be maintained. Natural ecological processes (including the natural role of fire) will operate with a minimum of interference by humans.

**A3 Research Natural Areas** – Preserve examples of natural ecosystems in an unmodified condition for research and education. No chargeable timber harvest is scheduled. Temporary road access may be allowed within some RNA's to fulfill research needs. Recreation use is not encouraged.

**A4** **Special Interest Areas** – Protect, preserve and interpret unique scenic, biological and geological features. Developed and dispersed recreation, research and educational opportunities will be the primary uses of these areas. Facilities may be provided for public interpretation and enjoyment. There will be no chargeable timber harvest.

**A5** **Unroaded Recreation, No Timber Harvest**—Provide a range of dispersed recreation opportunities in an undeveloped forest environment. Recreation facilities will be primitive in nature. Hiking, camping, horseback riding and other non-motorized recreation activities will predominate. No new roads will be constructed. There will be no chargeable timber harvest.

**A6** **Roaded Recreation, No Timber Harvest** – Provide a range of dispersed recreation opportunities within a natural environment that can be modified to accommodate recreation use. Motorized recreation activities will predominate. New roads and trails may be built. There will be no chargeable timber harvest.

**A7** **Old-growth**—Preserve old-growth forest environments for aesthetic and scenic values, habitat maintenance and other uses. Activities will include walk-in dispersed recreation, habitat improvement projects for fish and wildlife, and educational or interpretive activities. There will be no chargeable timber harvest.

**A8** Northern Spotted Owl habitat – Protect and manage old growth habitat for maintaining a viable population of Northern Spotted Owls and other wildlife species dependent on old growth habitat. Limited activities such as dispersed recreation and livestock grazing will be allowed provided habitat conditions can be maintained. No new roads will be constructed and existing road use will be controlled. There will be no chargeable timber harvest.

**A9** **Key Site Riparian** – Maintain or improve the diversity, high quality and key role of selected riparian areas in providing for the production of riparian resources. Soil, water, fish and wildlife management activities will predominate. Dispersed, walk-in recreation and interpretation will be encouraged. There will be no chargeable timber harvest. Reading and developed recreation will be discouraged.

**A11** **Winter Recreation Areas**—Provide winter recreation opportunities within a forest environment that can be modified for visitor use and satisfaction. Developed recreation opportunities will include downhill skiing facilities and snowplay areas. New facilities, roads, vegetation management and other development activities will be permitted when in compliance with approved master plans and special use permits.

**A12 Outdoor Education** – Provide outdoor education opportunities and environmental interpretation for public use and enjoyment. In general, sites will be preserved in their natural state. Facilities such as interpretive trails, picnic areas, shelters and viewing areas will be permitted. Developments will follow existing site development plans.

**Category B Management Areas** – Management activities will achieve objectives of timber and other resources. Chargeable timber harvest is permitted, but will not achieve full productive capability.

**B1** **Wild, Scenic and Recreational Rivers**—Maintain wild, scenic, and recreation characteristics of suitable rivers, recommended for inclusion into the National Wild and Scenic River System.

**B2** **Scenic Viewsheds** – Maintain or enhance appearance of landscapes seen from popular travel routes and use areas. Timber harvest will be permitted to protect and improve the visual quality of the areas. Results of activities will either not be evident or will be visually subordinate to the natural landscape.

**B3** **Roaded Recreation, Reduced Timber Harvest**—Provide a range of dispersed recreation opportunities where modifications are made to accommodate recreation use and other resource values. Motorized recreation use will predominate. Facilities will accommodate use and protect sites from deteriorating. Timber harvest will occur that is consistent with recreation objectives.

**B4 Pine/Oak Habitat** – Provide sufficient quantity and quality of pine/oak habitat to meet the needs of resident wildlife populations. Transitional winter range for deer and elk is also provided. Timber harvest will be managed to provide well-distributed mature or old growth ponderosa pine throughout the management area. Roads, trails and other facilities will be designed to minimize wildlife harassment and loss of habitat.

**B5** **Pileated Woodpecker and Pine Marten Habitat** – Manage quality mature or old growth habitat to ensure the perpetuation of pileated woodpeckers, pine martens and other wildlife species dependent on this habitat. Timber management activities will occur over longer than normal harvest rotations. Other resource activities are allowed provided they are consistent with wildlife objectives. Road density will be controlled.

**B6** **Special Emphasis Watersheds**—Maintain or improve watershed conditions for the sustained, long-term production of fisheries and high quality water. Emphasis will be to provide long-term watershed stability throughout the area. Most multiple use management activities, including low intensity timber harvest, will occur. Activities will reflect consideration for watershed needs through location, timing, intensity and duration.

**B7** **General Riparian Areas**—Maintain or improve the general habitat diversity of terrestrial and aquatic habitats for the full spectrum of riparian areas. These areas may include streams, lakes, reservoirs, wetlands, seeps and springs. Timber harvest will be scheduled at a reduced rate to perpetuate a diverse mosaic of vegetation, and multiple canopy layers. Walk-in recreation and other dispersed activities will generally be encouraged.

**B8** **Earth Flows** – Reduce the risk of reactivating or accelerating large, slow moving landslide areas, called earth flows. Vegetation will be managed to maintain a majority of the earth flow in a forested condition at all times. Openings created by harvesting, roading, wildlife improvement projects or other activities will be limited in size.

**B9 Wildlife-Visual Area**— Provide quality habitat for big game and riparian dependent species, while maintaining visual quality. Management will emphasize quality forage and thermal cover for deer and elk. Minimum amounts of forage and old growth will be available at all times. Harvest will be restricted seasonally. Visual quality standards will be met where landscapes can be seen from popular travel routes. New roads will be allowed, but closed

**Category C Management Areas** – Chargeable timber harvest to achieve an economically efficient sustained yield of timber, while meeting minimum legal requirements for protection of other resources.

**C1 Timber Emphasis** – Intensively manage for timber production while providing transitory forage production and opportunities for public use. A wide range of silvicultural practices will be applied including clearcutting, thinning and planting. Forage will be available for use by livestock and big game. Recreation activities will focus on use of existing or new road systems, dispersed camping and

Two management areas are not shown on this map. B5 Pileated Woodpecker and Pine Marten Habitat consists of areas which are illustrated on the Wildlife Resource map in this packet. B7 General Riparian areas cannot be effectively portrayed at this

U.S. DEPARTMENT OF AGRICULTURE  
FOREST SERVICE  
MT HOOD NATIONAL FOREST  
OREGON  
WILLAMETTE MERIDIAN



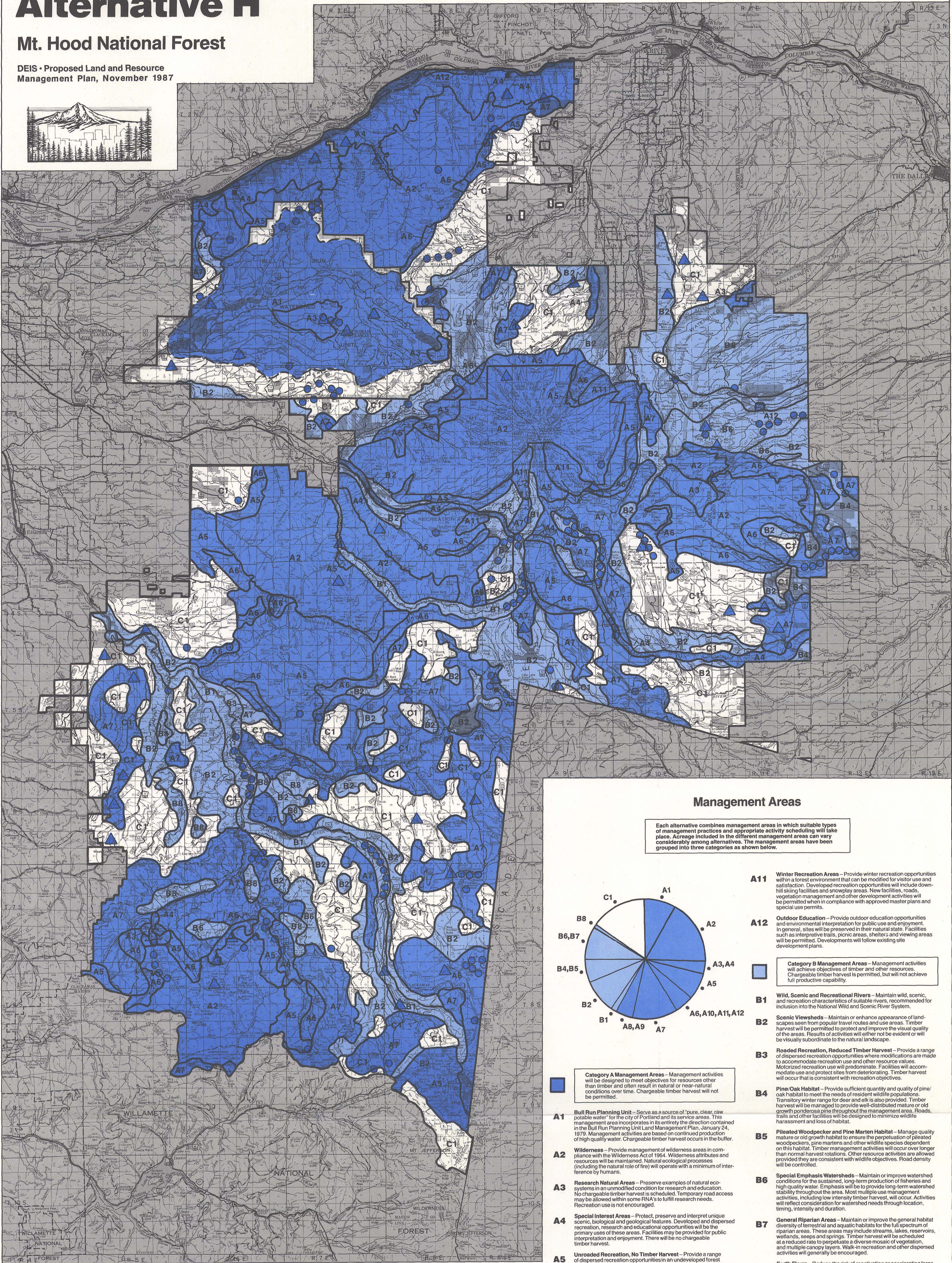
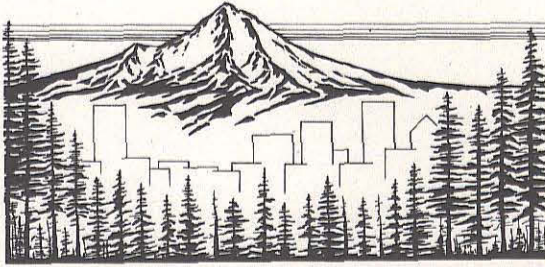
SCALE 3/8" = 1 MILE



# Alternative H

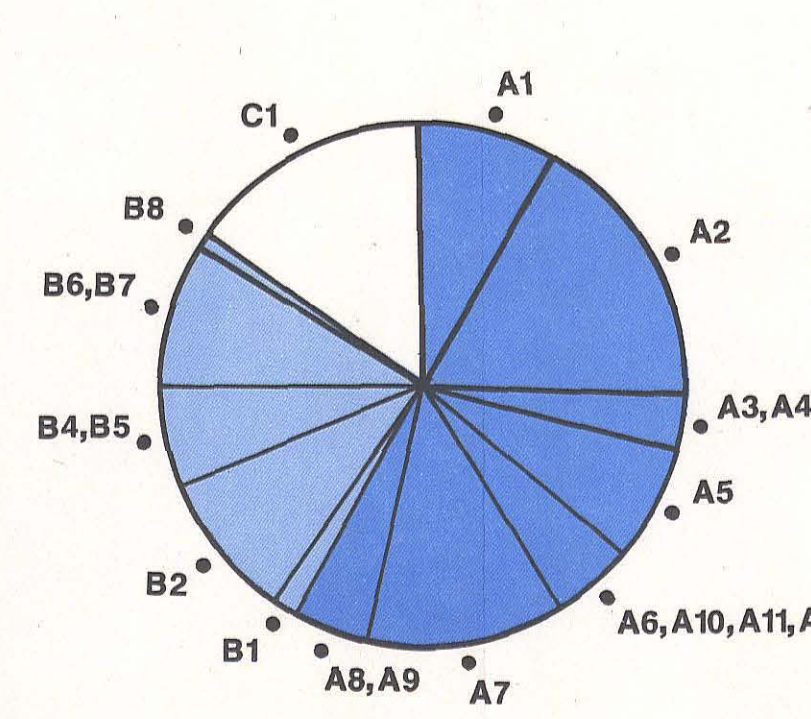
## Mt. Hood National Forest

DEIS • Proposed Land and Resource Management Plan, November 1987



### Management Areas

Each alternative combines management areas in which suitable types of management practices and appropriate activity scheduling will take place. Acreage included in the different management areas can vary considerably among alternatives. The management areas have been grouped into three categories as shown below.



**Category A Management Areas** - Management activities will be designed to meet objectives for resources other than timber and often result in natural or near-natural conditions over time. Chargeable timber harvest will not be permitted.

- A1** Bull Run Planning Unit - Serve as a source of "pure, clear, raw" water for the city of Portland and its service areas. This management area incorporates in its entirety the direction contained in the Bull Run Planning Unit and Management Plan, January 24, 1979. Management activities are based on continued production of high quality water. Chargeable timber harvest occurs in the buffer.
- A2** Wilderness - Provide management of wilderness areas in compliance with the Wilderness Act of 1964. Wilderness attributes and resources will be maintained. Natural ecological processes (including the natural role of fire) will operate with a minimum of interference by humans.
- A3** Research Natural Areas - Preserve examples of natural ecosystems in an unmodified condition for research and education. No chargeable timber harvest is scheduled. Temporary road access may be allowed within some RNA's to fulfill research needs. Recreation use is not encouraged.
- A4** Special Interest Areas - Protect, preserve and interpret unique scenic, biological and geological features. Developed and dispersed recreation, research and educational opportunities will be the primary uses of these areas. Facilities may be provided for public interpretation and enjoyment. There will be no chargeable timber harvest.
- A5** Unroaded Recreation, No Timber Harvest - Provide a range of dispersed recreation opportunities in an undeveloped forest environment. Recreation facilities will be primitive in nature. Hiking, camping, horseback riding and other non-motorized recreation activities will predominate. No new roads will be constructed. There will be no chargeable timber harvest.
- A6** Roaded Recreation, No Timber Harvest - Provide a range of dispersed recreation opportunities within a natural environment that can be modified to accommodate recreation use. Motorized recreation activities will predominate. New roads and trails may be built. There will be no chargeable timber harvest.
- A7** Old-Growth - Preserve old-growth forest environments for aesthetic and scenic values, habitat maintenance and other uses. Activities will include walk-in dispersed recreation, habitat improvement projects for fish and wildlife, and educational or interpretive activities. There will be no chargeable timber harvest.
- A8** Northern Spotted Owl Habitat - Protect and manage old growth habitat for maintaining a viable population of Northern Spotted Owls and other wildlife species dependent on old growth habitat. Limited activities such as dispersed recreation and livestock grazing will be allowed provided habitat conditions can be maintained. New roads will be constructed and existing road use will be controlled. There will be no chargeable timber harvest.
- A9** Key Site Riparian - Maintain or improve the diversity, high quality and key role of selected riparian areas in providing for the production of riparian resources. Soil, water, fish and wildlife management activities will predominate. Dispersed, walk-in recreation and interpretation will be encouraged. There will be no chargeable timber harvest. Roaded and developed recreation will be discouraged.
- A10** Developed Recreation Sites - Provide a full range of outdoor recreation opportunities at accessible and appropriately designed developed recreation sites. Physical improvements and facilities will be provided and maintained. Activities often involve widespread use of motorized vehicles. High concentrations of visitors are expected to occur around developments.

**A11** Winter Recreation Areas - Provide winter recreation opportunities within a forest environment that can be modified for visitor use and satisfaction. Developed recreation opportunities will include downhill skiing facilities and snowplay areas. New facilities, roads, vegetation management and other development activities will be permitted when in compliance with approved master plans and special use permits.

**A12** Outdoor Education - Provide outdoor education opportunities and environmental interpretation for public use and enjoyment. In general, sites will be preserved in their natural state. Facilities such as interpretive trails, picnic areas, shelters and viewing areas will be permitted. Developments will follow existing site development plans.

**Category B Management Areas** - Management activities will achieve objectives of suitable rivers, recreation, and other resources. Chargeable timber harvest is permitted, but will not achieve full productive capability.

- B1** Wild, Scenic and Recreational Rivers - Maintain wild, scenic, and recreation characteristics of suitable rivers, recommended for inclusion into the National Wild and Scenic River System.
- B2** Scenic Viewsheds - Maintain or enhance appearance of landscapes seen from popular travel routes and use areas. Timber harvest will be permitted to protect and improve the visual quality of the areas. Results of activities will either not be evident or will be visually subordinate to the natural landscape.
- B3** Roaded Recreation, Reduced Timber Harvest - Provide a range of dispersed recreation opportunities where modifications are made to accommodate recreation use and other resource values. Motorized recreation use will predominate. Facilities will accommodate use and protect sites from deteriorating. Timber harvest will occur that is consistent with recreation objectives.
- B4** Pine Oak Habitat - Provide sufficient quantity and quality of pine/oak habitat to meet the needs of resident wildlife populations. Transitory winter range for deer and elk is also provided. Timber harvest will be managed to provide well-distributed mature or old growth ponderosa pine throughout the management area. Roads, trails and other facilities will be designed to minimize wildlife harassment and loss of habitat.
- B5** Pileated Woodpecker and Pine Marten Habitat - Manage quality mature or old growth habitat to ensure the perpetuation of pileated woodpeckers, pine martens and other wildlife species dependent on this habitat. Timber management activities will occur over longer than normal harvest rotations. Other resource activities are allowed provided they are consistent with wildlife objectives. Road density will be controlled.
- B6** Special Emphasis Watersheds - Maintain or improve watershed conditions for the sustained, long-term production of fisheries and high quality water. Emphasis will be to provide long-term watershed stability throughout the area. Most multiple use management activities, including low intensity timber harvest, will occur. Activities will reflect consideration for watershed needs through location, timing, intensity and duration.
- B7** General Riparian Areas - Maintain or improve the general habitat diversity of terrestrial and aquatic habitats for the full spectrum of riparian areas. These areas may include streams, lakes, reservoirs, wetlands, seeps and springs. Timber harvest will be scheduled at a reduced rate to perpetuate a diverse mosaic of vegetation, and multiple canopy layers. Walk-in recreation and other dispersed activities will generally be encouraged.
- B8** Earth Flows - Reduce the risk of reactivating or accelerating large, slow moving landslide areas, called earth flows. Vegetation will be managed to maintain a majority of the earth flow in a forested condition at all times. Openings created by harvesting, roading, wildlife improvement projects or other activities will be limited in size.
- B9** Wildlife-Visual Area - Provide quality habitat for big game and riparian dependent species, while maintaining visual quality. Management will emphasize quality forage and thermal cover for deer and elk. Minimum amounts of forage and old growth will be available at all times. Harvest will be restricted seasonally. Visual quality standards will be met where landscapes can be seen from popular travel routes. New roads will be allowed, but closed after management activities.

**Category C Management Areas** - Chargeable timber harvest to achieve an economically efficient sustained yield of timber, while meeting minimum legal requirements for protection of other resources.

**C1** Timber Emphasis - Intensively manage for timber production while providing transitory forage production and opportunities for public use. A wide range of silvicultural practices will be applied including clearcutting, thinning and planting. Forage will be available for use by livestock and big game. Recreation activities are allowed on use of existing or new road systems, dispersed camping and off-road vehicle use.

Two management areas are not shown on this map. B5 Pileated Woodpecker and Pine Marten Habitat consists of areas which are illustrated on the Wildlife Resources map in this packet. B7 General Riparian areas cannot be effectively portrayed at this map scale.

U.S. DEPARTMENT OF AGRICULTURE  
FOREST SERVICE  
MT HOOD NATIONAL FOREST  
OREGON  
WILLAMETTE MERIDIAN  
1882

#### LEGEND

- Mt. Hood National Forest Boundary
- Adjacent National Forest Boundary
- State Boundary Line
- County Boundary Line
- Ranger District Boundary
- District Ranger Office
- Other Forest Service Facility
- National Control Station or Permanent Lookout Station
- Horizontal Control Station
- Paved Road
- All Weather Road
- Dirt Road
- Primitive Road
- Trail
- Pacific Crest National Scenic Trail
- Railroad
- Power Transmission Line
- TV Tower
- Locality or Landmark Object
- Forest Supervisor's Office
- Interstate Highway
- U.S. Highway
- Oregon State Highway
- Washington State Highway
- National Forest Primary Route
- Forest Route
- Recreation Site, Forest Service
- Recreation Site, other than Forest Service
- Mining Quarry or Gravel Pit
- School or Church
- Gas Station
- Non Forest Land

#### KEY MAP



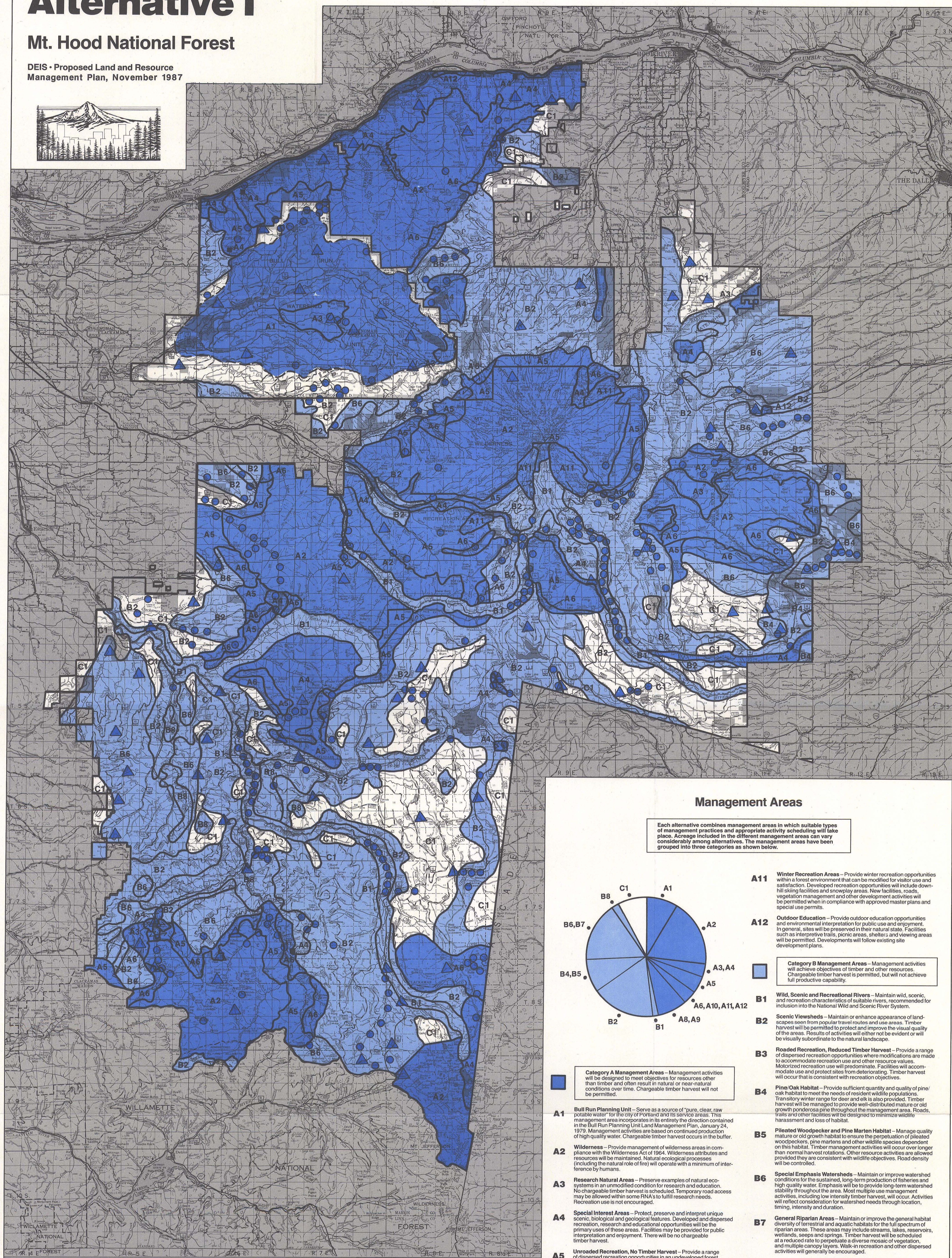
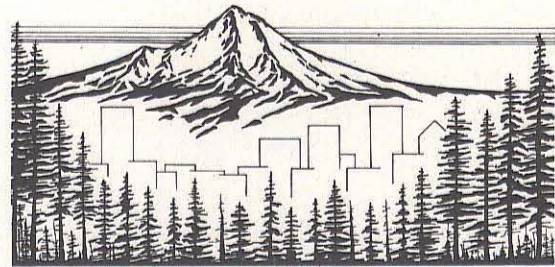
SCALE 3/8" = 1 MILE



# Alternative I

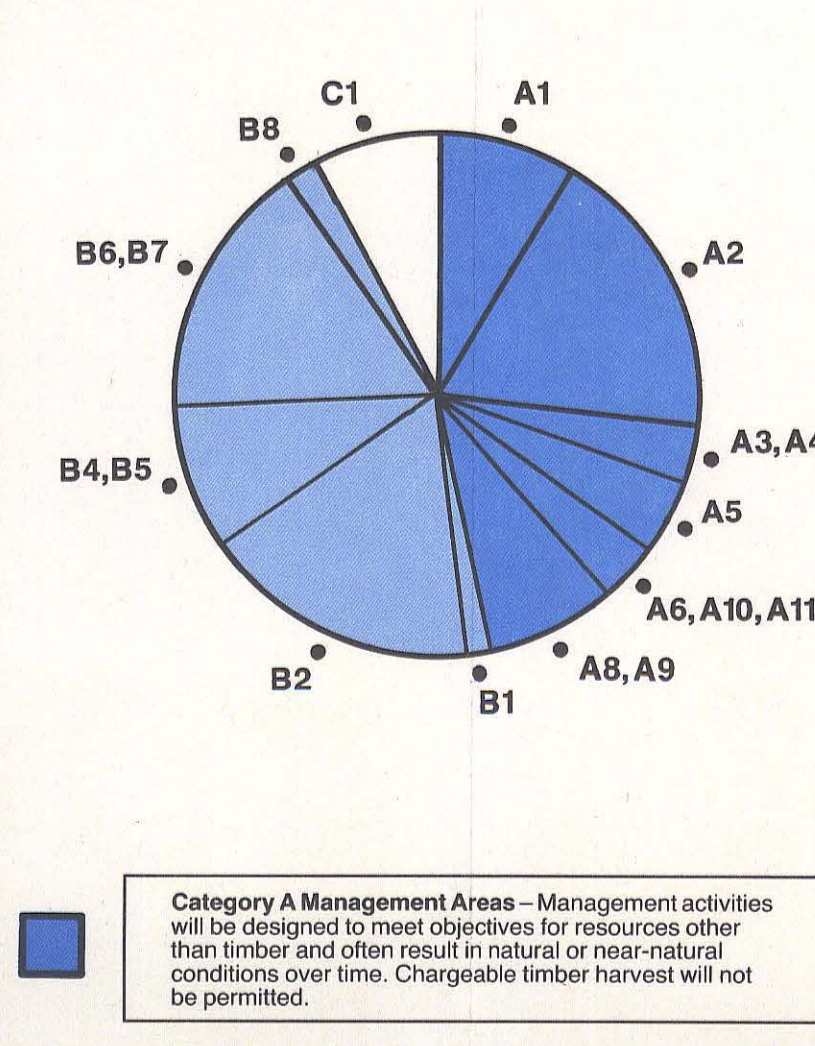
## Mt. Hood National Forest

DEIS • Proposed Land and Resource Management Plan, November 1987



### Management Areas

Each alternative combines management areas in which suitable types of management practices and appropriate activity scheduling will take place. Acreage included in the different management areas can vary considerably among alternatives. The management areas have been grouped into three categories as shown below.

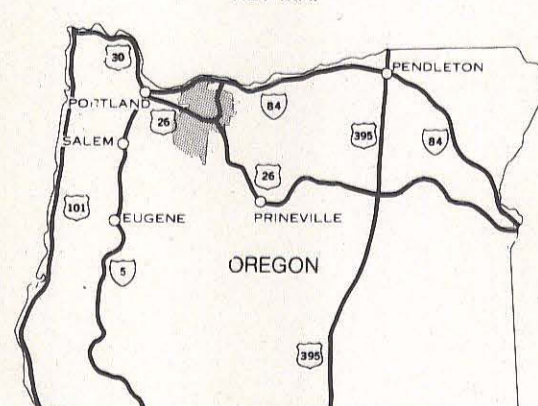


- Category A Management Areas** – Management activities will be designed to meet objectives for resources other than timber and often result in natural or near-natural conditions over time. Chargeable timber harvest will not be permitted.
- A1** Bull Run Planning Unit – Serve as a source of "pure, clear, raw portable water" for the city of Portland and its service areas. This management area incorporates in its entirety the direction contained in the Bull Run Planning Unit Land Management Plan, January 24, 1979. Management activities are based on continued production of high quality water. Chargeable timber harvest occurs in the buffer.
- A2** Wilderness – Provide management of wilderness areas in compliance with the Wilderness Act of 1964. Wilderness attributes and resources will be maintained. Natural ecological processes (including the natural role of fire) will operate with a minimum of interference by humans.
- A3** Research Natural Areas – Preserve examples of natural ecosystems in an unmodified condition for research and education. No chargeable timber harvest is scheduled. Temporary road access may be allowed within some RNAs to fulfill research needs. Recreation use is not encouraged.
- A4** Special Interest Areas – Protect, preserve and interpret unique scenic, biological and geological features. Developed and dispersed recreation, research and educational opportunities will be the primary uses of these areas. Facilities may be provided for public interpretation and enjoyment. There will be no chargeable timber harvest.
- A5** Unroaded Recreation, No Timber Harvest – Provide a range of dispersed recreation opportunities in an undeveloped forest environment. Recreation facilities will be primitive in nature. Hiking, camping, horseback riding and other non-motorized recreation activities will predominate. No new roads will be constructed. There will be no chargeable timber harvest.
- A6** Roaded Recreation, No Timber Harvest – Provide a range of dispersed recreation opportunities within a natural environment that can be modified to accommodate recreation use. Motorized recreation activities will predominate. Temporary roads may be built. There will be no chargeable timber harvest.
- A7** Old-Growth – Preserve old-growth forest environments for aesthetic and scenic values, habitat maintenance and other uses. Activities will include walk-in dispersed recreation, habitat improvement projects for fish and wildlife, and educational or interpretive activities. There will be no chargeable timber harvest.
- A8** Northern Spotted Owl Habitat – Protect and manage old growth habitat for maintaining a viable population of Northern Spotted Owls and other wildlife species dependent on old growth habitat. Limited activities such as dispersed recreation and livestock grazing will be allowed provided habitat conditions can be maintained. No new roads will be constructed and existing roads will be controlled. There will be no chargeable timber harvest.
- A9** Key Site Riparian – Maintain or improve the diversity, high quality and key role of selected riparian areas in providing for the production of riparian resources. Soil, water, fish and wildlife management activities will predominate. Dispersed recreation and interpretation will be encouraged. There will be no chargeable timber harvest. Roading and developed recreation will be discouraged.
- A10** Developed Recreation Sites – Provide a full range of outdoor recreation opportunities at accessible and appropriately designed developed recreation sites. Physical improvements and facilities will be provided and maintained. Activities often involve widespread use of motorized vehicles. High concentrations of visitors are expected to occur around developments.
- Category B Management Areas** – Management activities will achieve objectives of timber and other resources. Chargeable timber harvest is permitted, but will not achieve full productive capability.
- B1** Wild, Scenic and Recreational Rivers – Maintain wild, scenic, and recreation characteristics of suitable rivers, recommended for inclusion into the National Wild and Scenic River System.
- B2** Scenic Viewsheds – Maintain or enhance appearance of landscapes seen from popular travel routes and use areas. Timber harvest will be permitted to protect and improve the visual quality of the areas. Results of activities will either not be evident or will be visually subordinate to the natural landscape.
- B3** Roaded Recreation, Reduced Timber Harvest – Provide a range of dispersed recreation opportunities where modifications are made to accommodate recreation use and other resource values. Motorized recreation use will predominate. Facilities will accommodate use and protect sites from deteriorating. Timber harvest will occur that is consistent with recreation objectives.
- B4** Pine Oak Habitat – Provide sufficient quantity and quality of pine/oak habitat to meet the needs of resident wildlife populations. Transitory winter ranges for deer and elk is also provided. Timber harvest will be managed to provide well-distributed mature or old growth ponderosa pine throughout the management area. Roads, trails and other facilities will be designed to minimize wildlife harassment and loss of habitat.
- B5** Pileated Woodpecker and Pine Marten Habitat – Manage quality mature or old growth habitat to ensure the perpetuation of pileated woodpeckers, pine martens and other wildlife species dependent on this habitat. Timber management activities will occur over longer than normal harvest rotations. Other resource activities are allowed provided they are consistent with wildlife objectives. Road density will be controlled.
- B6** Special Emphasis Watersheds – Maintain or improve watershed conditions for the sustained, long-term production of fisheries and high quality water. Emphasis will be to provide long-term watershed stability throughout the area. Most multiple use management activities, including low intensity timber harvest, will occur. Activities will reflect consideration for watershed needs through location, timing, intensity and duration.
- B7** General Riparian Areas – Maintain or improve the general habitat diversity of terrestrial and aquatic habitats for the full spectrum of riparian areas. These areas may include streams, lakes, reservoirs, wetlands, seeps and springs. Timber harvest will be scheduled at a reduced rate to perpetuate a diverse mosaic of vegetation and multiple canopy layers. Walk-in recreation and other dispersed activities will generally be encouraged.
- B8** Earth Flows – Reduce the risk of reactivating or accelerating large, slow moving landslide areas, called earth flows. Vegetation will be managed to maintain a majority of the earth flow in a forested condition at all times. Openings created by harvesting, roading, wildlife improvement projects or other activities will be limited in size, timing, intensity and duration.
- B9** Wildlife-Visual Area – Provide quality habitat for big game and riparian dependent species, while maintaining visual quality. Management will emphasize quality forage and thermal cover for deer and elk. Minimum amounts of forage and old growth will be available at all times. Harvest will be restricted seasonally. Visual quality standards will be met where landscapes can be seen from popular travel routes. New roads will be allowed, but closed after management activities.
- Category C Management Areas** – Chargeable timber harvest to achieve an economically efficient sustained yield of timber, while meeting minimum legal requirements for protection of other resources.
- C1** Timber Emphasis – Intensively manage for timber production while providing transitory forage production and opportunities for public use. A wide range of silvicultural practices will be applied including clearcutting, thinning and planting. Forage will be available for use by livestock and big game. Recreation activities will focus on use of existing or new road systems, dispersed camping and off-road vehicle use.

Two management areas are not shown on this map. B5 Pileated Woodpecker and Pine Marten Habitat consists of areas which are illustrated on the Wildlife Resource map in this packet. B7 General Riparian areas cannot be effectively portrayed at this map scale.

U.S. DEPARTMENT OF AGRICULTURE  
FOREST SERVICE  
MT HOOD NATIONAL FOREST  
OREGON  
WILLAMETTE MERIDIAN  
1862

#### KEY MAP



#### LEGEND

- Mt. Hood National Forest Boundary  
— Adjacent National Forest Boundary  
— State Boundary Line  
— County Boundary Line  
— Special Area Boundary Line  
— Ranger District Boundary  
— District Ranger Office  
— Other Forest Service Facility  
— Horizontal Control Station  
— Permanent Lookout Station  
— Forest Supervisor's Office
- Paved Road  
— All Weather Road  
— Dirt Road  
— Primitive Road  
— Trail  
— Pacific Great National Scenic Trail  
— Power Transmission Line  
— TV Tower  
— Located on Landmark Object  
— Forest Supervisor's Office
- Interstate Highway  
— U.S. Highway  
— Oregon State Highway  
— Washington State Highway  
— National Forest Primary Route  
— Forest Route  
— Recreation Site, Forest Service  
— Recreation Site, other than Forest Service  
— Mine, Quarry or Gravel Pit
- School or Church  
— Gas Station  
— Range Station  
— Non Forest Land

SCALE 3/8" = 1 MILE