

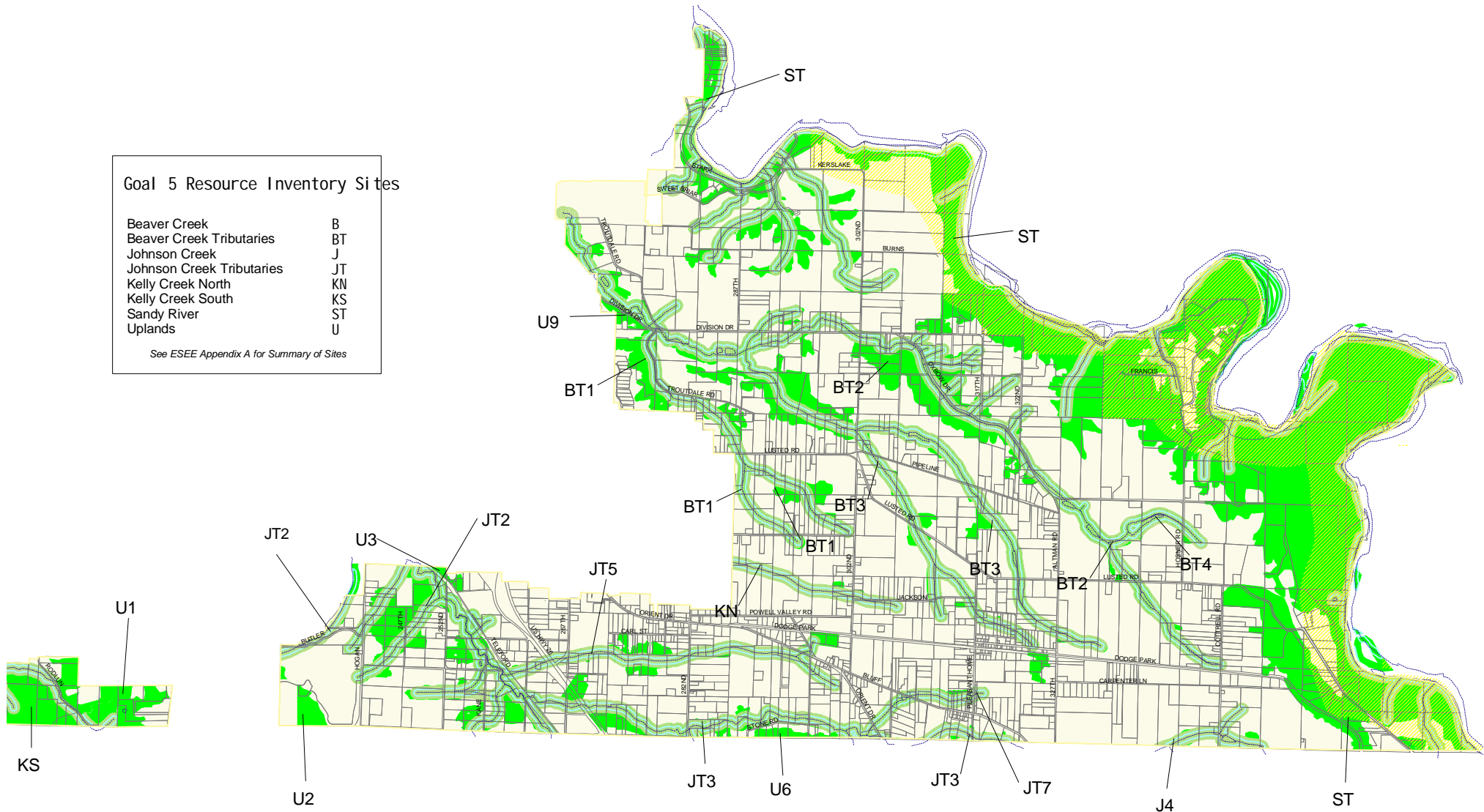
West of Sandy River

Significant Environmental Concern Overlay Zones

Goal 5 Resource Inventory Sites

Beaver Creek	B
Beaver Creek Tributaries	BT
Johnson Creek	J
Johnson Creek Tributaries	JT
Kelly Creek North	KN
Kelly Creek South	KS
Sandy River	ST
Uplands	U

See ESEE Appendix A for Summary of Sites



Land Use
Planning
Division

1600 SE 190th Ave
Portland, OR 97233
(503) 988-3043
Fax (503) 988-3389
land.use.planning@co.multnomah.or.us

Significant Environmental Concern Zones

- SEC-wr Water Resource
(200 ft each side of stream)
- SEC-h Wildlife Habitat
- SEC-sw Scenic Waterways

- Riparian Corridors
(100 ft each side of stream)
- West of Sandy River Plan Area
- Tax Lot Boundaries
- Streams



c:\arcdata\westof_sandyriver.apr

