



Board of County Commissioners

**Project Update
February 17, 2015**

Agenda

- Project Dashboard
- Equity Dashboard
- Construction Update

Schedule Milestones

	Estimated Completion	Status
- 100% Miles Place Design	April '14	Complete
- Stephens Creek Construction	June '14	Complete
- Miles Place Construction	Winter '14	On-going
- Complete Land Use / ROW	Spring '15	On-going
- Long-Term Maintenance IGA	Summer '15	On-going
- Metro Agreement	Summer '15	On-going
- Macadam Bay Driveway	Summer '15	On-going
- Overall Project completion	Fall '16	On-going

Recent & Upcoming Meetings and Board Actions

- BCC Briefing	10/7/14
- BCC Briefing	12/9/14
- BCC Briefing	2/24/15
- BCC Briefing	4/21/15
- BCC Briefing	6/23/15

Public Involvement

Thru January, 2015

- Meetings with Bicycle Advisory Committee on construction traffic
- Provided ongoing traffic updates
- Kept bridge neighbors informed of ongoing work
- Final plans made for fall/winter schools outreach program
- Planning/coordination regarding river closure for steel work

December 2012 Project Funding Plan

Multnomah County VRF (Collected)	\$ 22,708,000
Multnomah County VRF (Bonded)	\$ 141,684,000
City of Portland	\$ 74,750,000
Oregon Jobs and Transportation Act	\$ 30,000,000
2012 Oregon Legislature	\$ 5,000,000
Federal funds carryover from planning	\$ 15,658,000
Federal TIGER III Act	\$ 17,700,000
TOTAL	\$ 307,500,000*

*VRF provides adequate funds to cover anticipated County expenditures

Stakeholder Issues

Thru January, 2015

- Contractor acted to address deck joint noise complaints from neighbors
- Coordinating business signage near construction on east side
- Stakeholder coordination for Macadam Bay driveway
- Coordination/response to public information requests

Project Expenditures (post-ROD)

Thru December, 2014

	\$ Spent	Status
ROW	\$ 24,786,526	As of Dec 2014, the total cost is anticipated to be 0%-3.25% above the original projection. (\$307,500,000 - \$317,500,000)
Design/pre-con.	\$ 29,175,134	
Construction	\$ 174,208,979	
Grand Total	\$ 228,170,639	

Social Equity

Thru November, 2014

A&E Team (Design) Sep '12	Goal	To Date	Status
DBE	7%, (\$1.0m)	9.0%	Complete
MWESB	13%, (\$1.8m)	14.9%	Complete
CM/GC Contractor	Goal	To Date	Status
DBE (Committed)	4%	3.2%	Below Target
DMWESB (Contracted)	20%	16.6%	Below Target
Workforce Women	14%	13%	Below Target
Diversity Minority	20%	29%	Above Target

Note: DMWESB goals/targets published Sept 2011 from CM/GC in subcontracting plan.

News Headlines

[First Sellwood Bridge arch pieces arrive by barge \(Oregonian\)](#)
[Pieces of new Sellwood Bridge float on river \(KOIN\)](#)
[Portland to delay final Sellwood payment \(Oregonian\)](#)
[County confirms Sellwood cost overruns \(Sellwood Bee\)](#)
[County budgeted unusually low for unexpected costs \(Oregonian\)](#)

Followers - Weekly email updates = 725
 - Twitter account = 1173

Sustainability

- Project sustainability tracking and documentation continues
- Reuse and recycling of onsite materials continues
- Plan refinement and preparations for park, stream, and habitat
- Draft Greenroads Certification documents pending comments
- Advancements to the Regional Trail connectivity (at Miles Place)

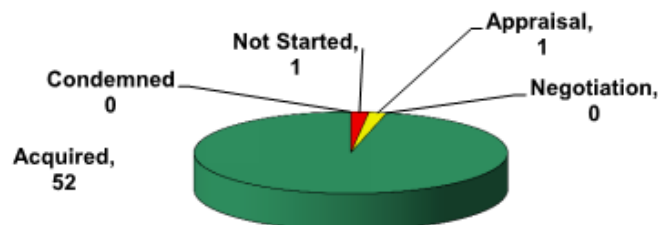
Design Accomplishments

- Support for long-term maintenance intergovernmental agreement
- Coordination with PGE, Freeman Motors, and PBOT for Macadam Bay Driveway
- Continued coordination/support with construction

Construction Accomplishments

- Paving of Miles Place/multiuse path completed
- Ongoing work with City of Portland on 36" waterline coordination
- Continued work on foundations, approaches, and new main bridge span
- Continued work on west retaining walls (some complete, others near completion)
- Work on SE interchange ramp

Right of Way Progress



ROW actions to be completed = 54
Current as of February 12, 2015

Upcoming Site Work

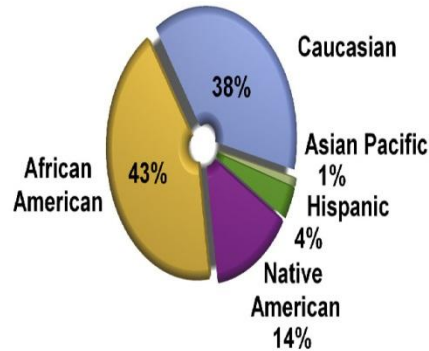
- Steel delivery for main span and temporary river closure
- Completion of work for some west retaining walls
- Continued work on west interchange and regional trail
- Construction of interchange ramps
- Continued deck work for east bridge approach

December 2014 Sellwood Small Business Dashboard

Summary

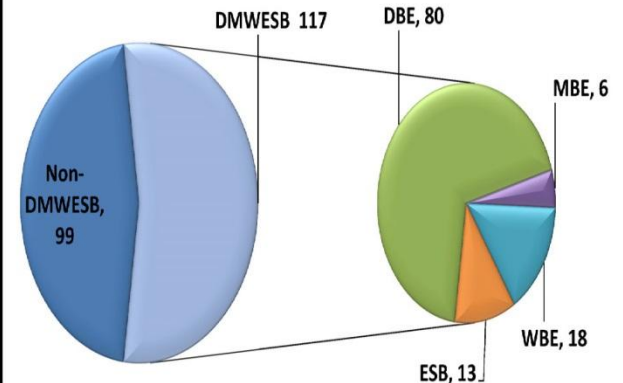
- These charts are based on contracts and dollars awarded.
- The contractor's goal is to award 20% of total contract dollars to DMWESB firms. Currently, the DMWESB Contracted is 16.5% and the DMWESB Paid is 9%.

DMWESB Ethnicity



Total Contracts Awarded

Total Contracts - 216

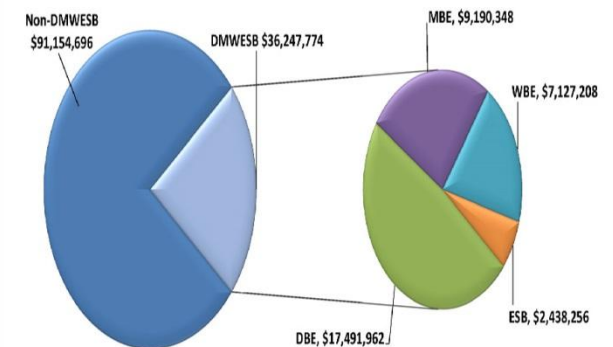


DMWESB Participation and Paid to Date



Total Dollars Awarded

\$127,402,471
Total Project Contract Amount
\$218,623,931

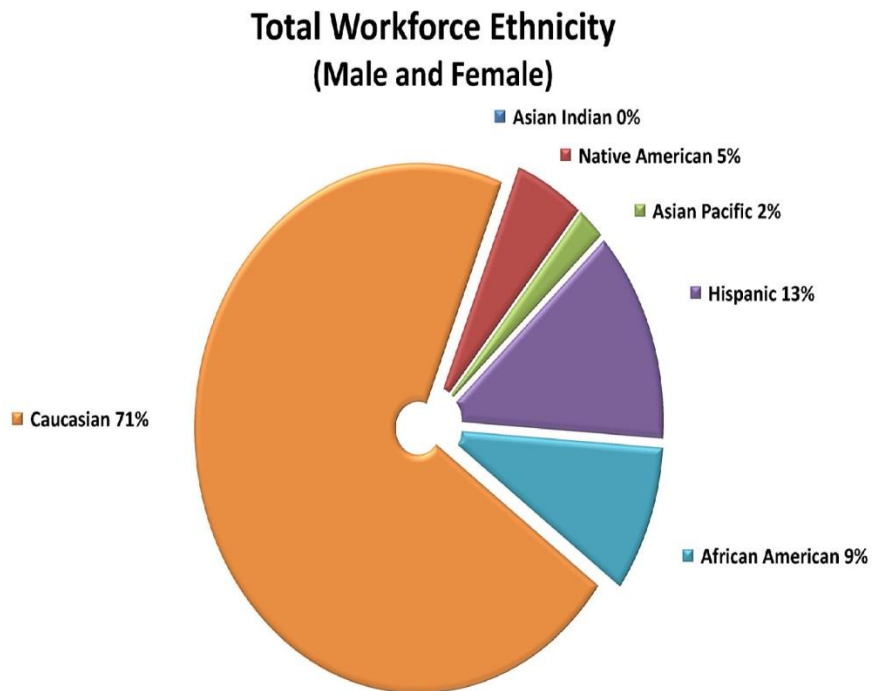
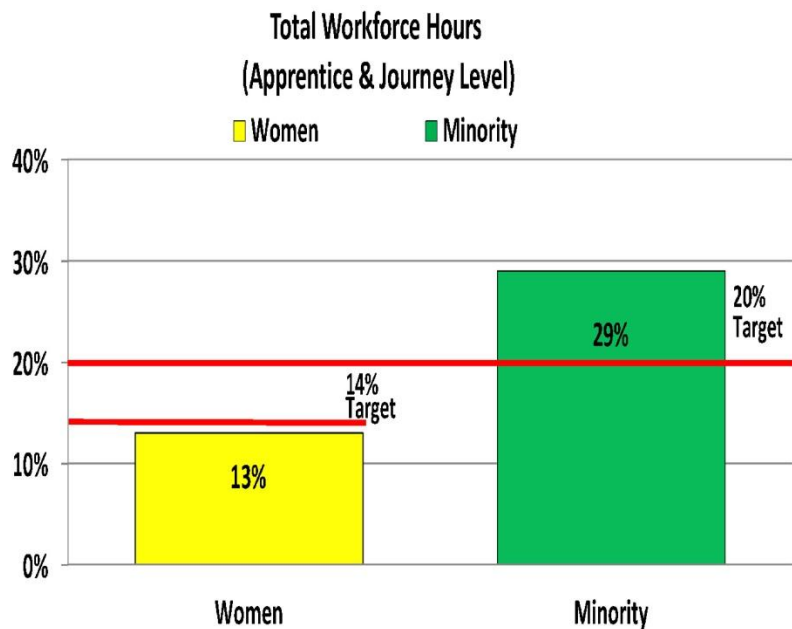


Glossary: DBE—Disadvantaged Business, MBE—Minority-Owned Business, WBE—Women-Owned Business, ESB—Emerging Small Business

December 2014 Sellwood Workforce Dashboard

Summary

- Progress on meeting aspirational goals for minority and female participation.
- SSJV is exceeding the target for minorities and meeting the target for women.

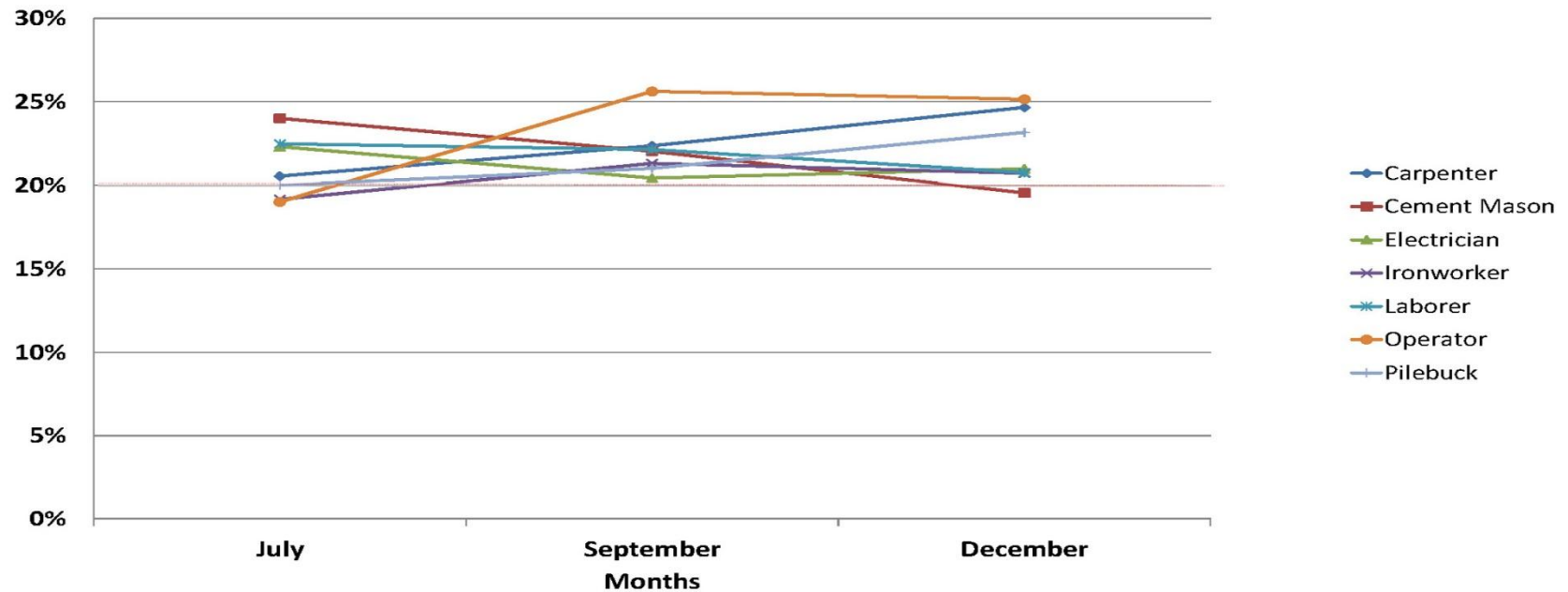


Summary

The following chart represents total apprenticeship hours by trade for all subcontractors working on the project. Any contractor over \$100K is required to achieve 20% apprenticeship hours by trade per the County's Workforce Training and Hiring Program. Multnomah County allows for exceptions to the apprenticeship requirement based on low hours, complexity of work, safety, and other considerations. The chart reflects apprenticeship including contractor exceptions.

Apprenticeship by Trade

Goal: 20% Apprenticeship by Trade



Construction Update

Sellwood Bridge Replacement Project Information

- About 73% complete construction
- Traffic on new span – Winter 2015-2016
- East approach and remaining work complete – Fall 2016

Construction Progress

(thru 1/31/15)

	Detour Bridge	Land- slide	Condo. Mods.	Work Bridge	OR 43 Walls	Bridge & IntX	Total
Total Value	\$20.68	\$12.72	\$3.19	\$9.40	\$12.06	\$159.44	\$217.50
Paid to dt	\$20.68	\$12.68	\$3.13	\$8.99	\$11.35	\$101.78	\$158.61
	100%	99.7%	98.0%	95.6%	94.1%	63.8%	72.9%
Costs in millions							



01/13/15
Courtesy of ODOT

Work

- Landslide stabilization (complete)
- Stephen's Creek culvert (complete)
- Work bridges (complete)
- In-river foundations (complete)
- Condominium rebuild (Phase 1 complete)
- Riverview Cemetery (Phase 1 complete)
- Miles Place (Complete)
- Regional Trail
- West OR 43 retaining walls
- West approach
- Removal of old bridge piers
- Main bridge piers
- East approach (S side complete, traffic re-aligned)
- East approach (N side foundations and columns)
- Steel fabrication
- Steel installation















01/13/15
Courtesy of ODOT



























01/13/15
Courtesy of ODOT





