
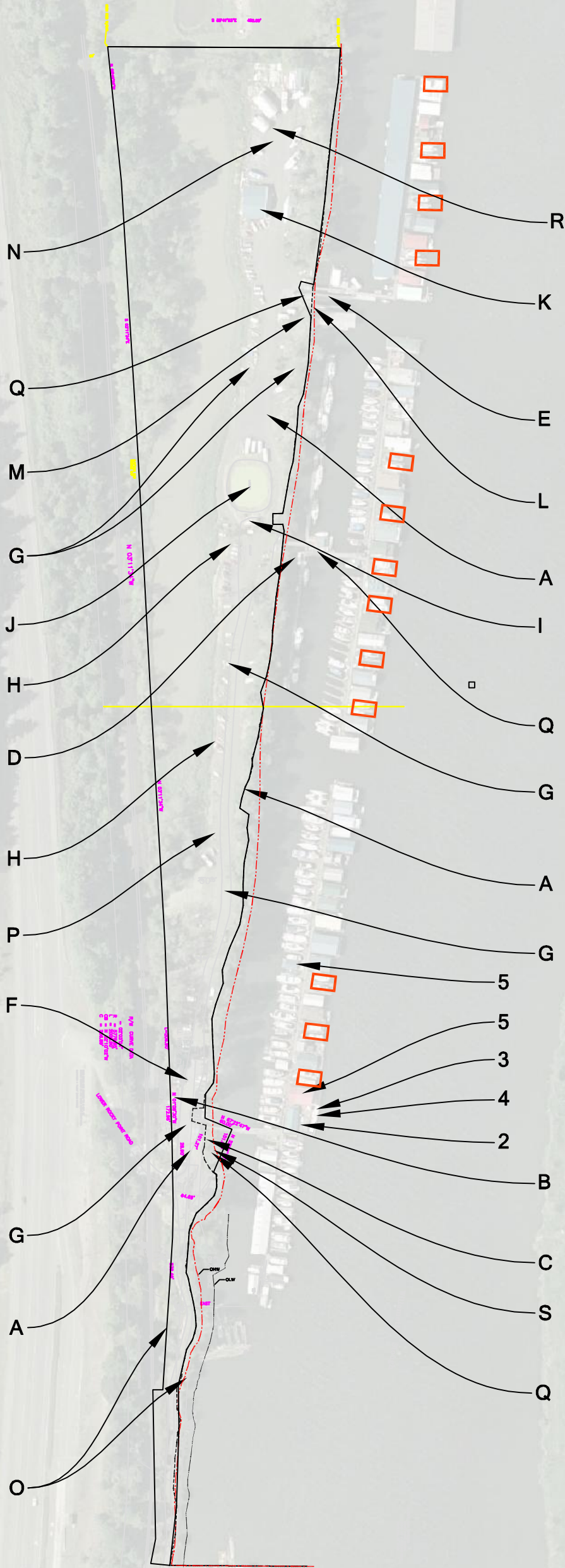


## OREGON STATE GOAL EXCEPTIONS

 <p>Flowing Solutions 3305 SW 87th Avenue Portland, OR 97225 Phone (503) 297-6331 Fax (503) 297-6053</p>	TITLE: LOCATOR MAPS		REVISED: 7/14/09
	ROCKY POINT MARINA 23586 NW ST. HELENS ROAD PORTLAND, OR 97231	RIVER: MULTNOMAH CHANNEL DATUM: NGVD	SHEET NO. 0

NOTE: Boxes Indicate Proposed House Boat Conversion/Additions



- A. roadway
- B. water well house, storage and treatment
- C. recycling/garbage/mail center (upper)
- D. recycling/garbage station (middle)
- E. recycling/garbage station (lower)
- F. security gate
- G. parking (167 space)
- H. trailer storage
- I. sewage treatment plant
- J. evaporation pond
- K. boatyard shop/office
- L. boat haul out pier
- M. boat wash down pad and building
- N. boatyard
- O. power- Columba PUD
- P. telephone - CenturyTel
- Q. fuel storage tanks
- R. boat yard restroom
- S. propane storage tanks
- 1. docks
- 2. marina office/store
- 3. fuel dock
- 4. marine sewer pump out
- 5. restrooms/laundry (4 bldg)

NOTE: Utilities Are Underground, Both Sides of Road From Main Ramp to Boat Yard

SCALE 1"=250'  
1" INCH

Flowing solutions



Flowing Solutions  
3305 SW 87th Avenue  
Portland, OR 97225  
Phone (503) 297-6331  
Fax (503) 297-6053

TITLE: EXHIBIT '1' KEY MAP

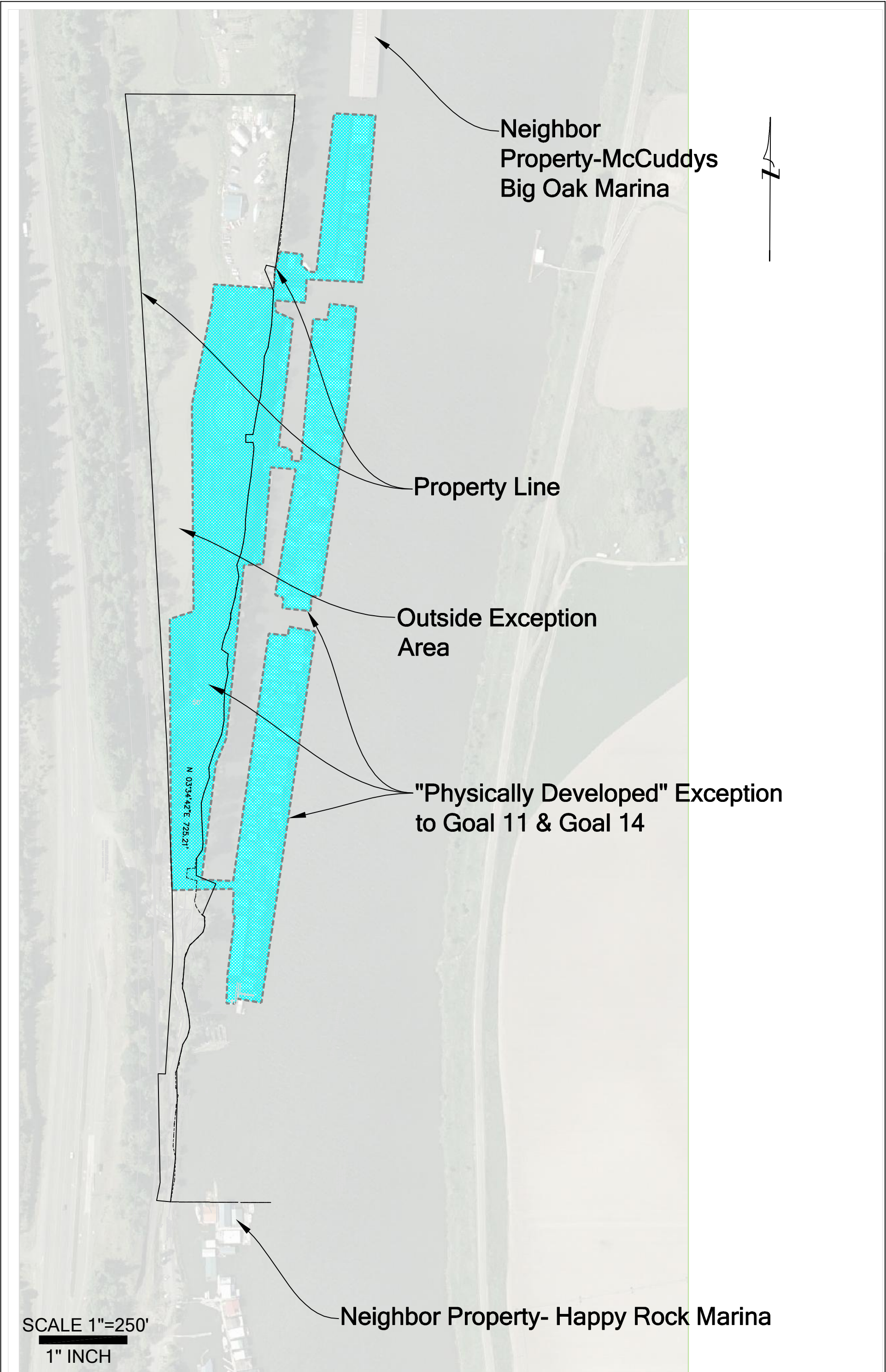
ROCKY POINT MARINA  
23586 NW ST. HELENS ROAD  
PORTLAND, OR 97231

RIVER: MULTNOMAH CHANNEL  
DATUM: NGVD


REVISED:  
7/14/09

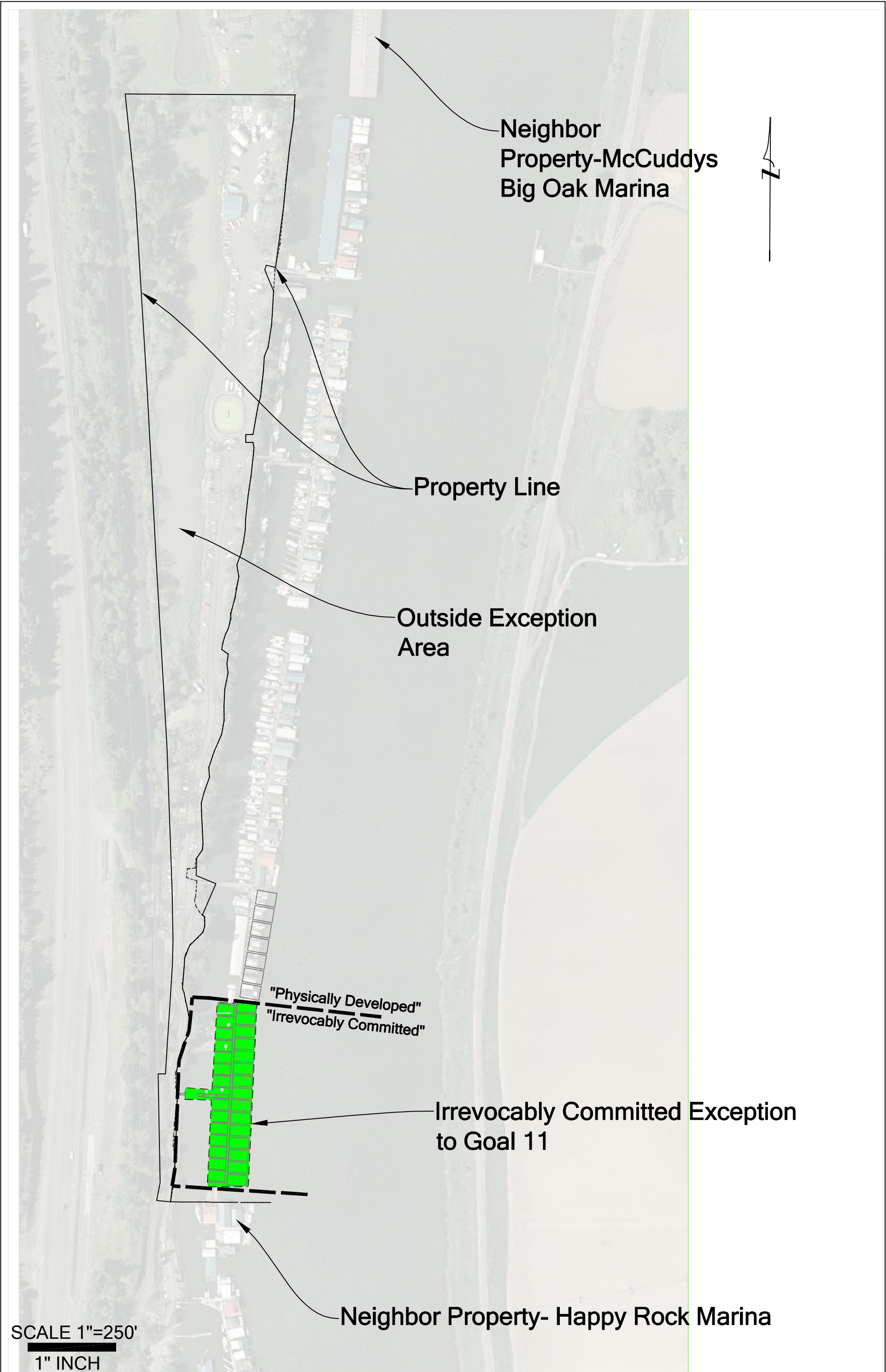
SHEET NO.  
1





SCALE 1"=250'  
1" INCH

<div><div>Flowing solutions</div><div><div>Flowing Solutions 3305 SW 87th Avenue Portland, OR 97225 Phone (503) 297-6331 Fax (503) 297-6053</div></div></div>	TITLE: EXHIBIT 2-A - GOAL 11 and GOAL 14 PHYSICALLY DEVELOPED EXCEPTION AREA		REVISED: 7/14/09
	ROCKY POINT MARINA 23586 NW ST. HELENS ROAD PORTLAND, OR 97231	RIVER: MULTNOMAH CHANNEL DATUM: NGVD	SHEET NO. 2



**Flowing solutions**



Flowing Solutions  
3305 SW 87th Avenue  
Portland, OR 97225  
Phone (503) 297-6331  
Fax (503) 297-6053

TITLE: EXHIBIT 2D - IRREVOCABLY COMMITTED  
GOAL 11 EXCEPTION AREA

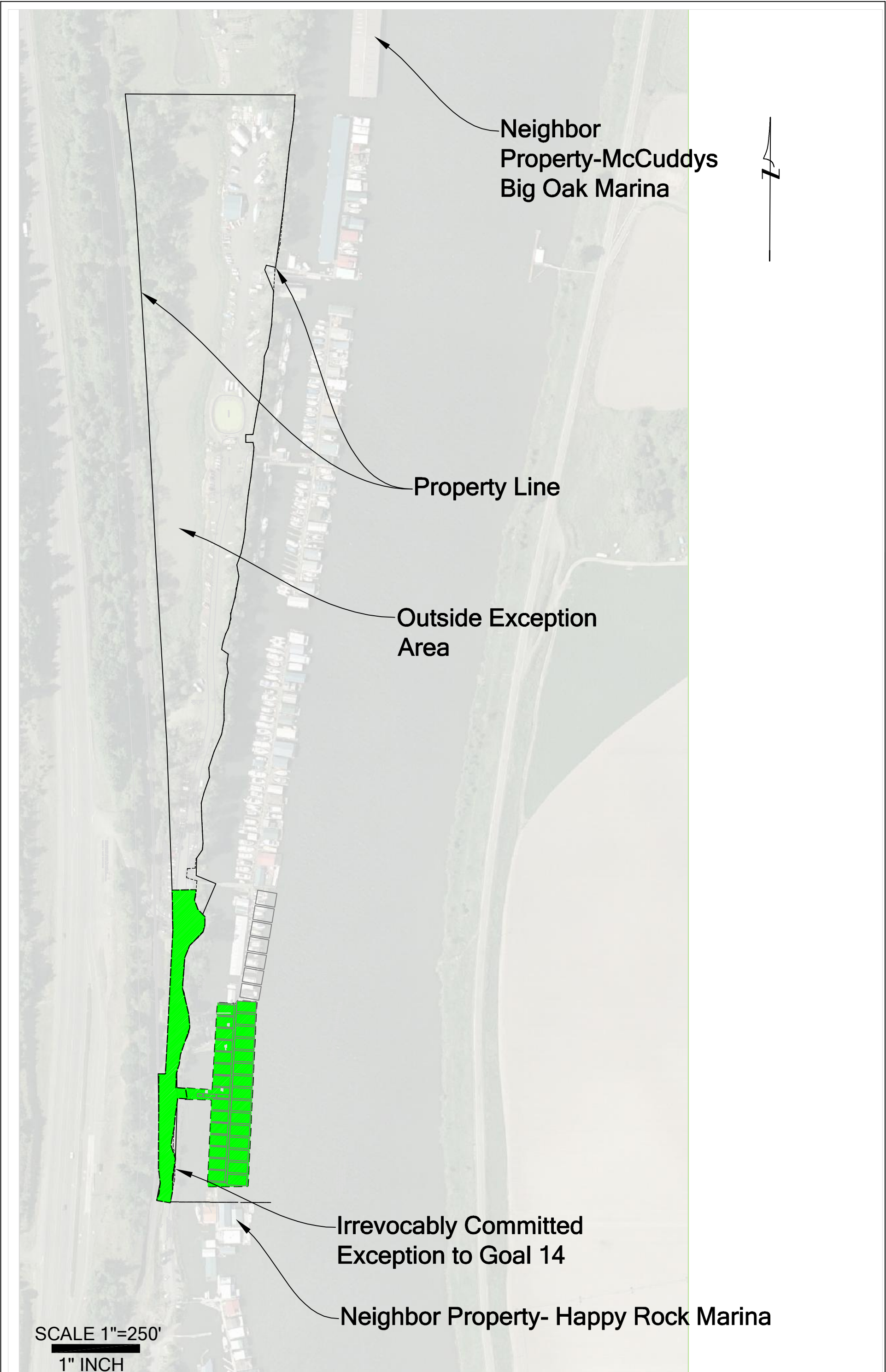
ROCKY POINT MARINA  
23586 NW ST. HELENS ROAD  
PORTLAND, OR 97231


RIVER: MULTNOMAH CHANNEL  
DATUM: NGVD

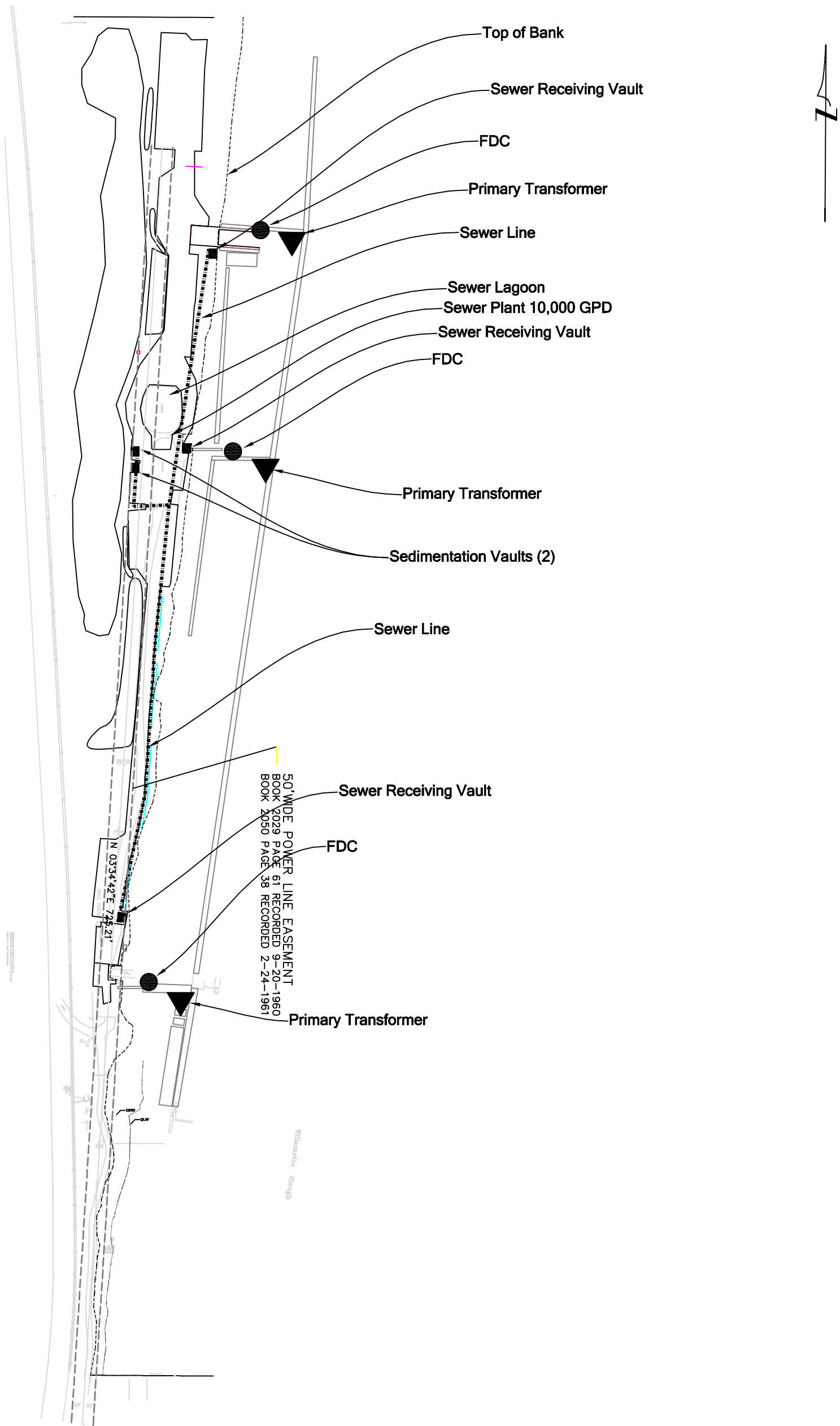
REVISED:  
7/14/09

SHEET NO.  
**5**




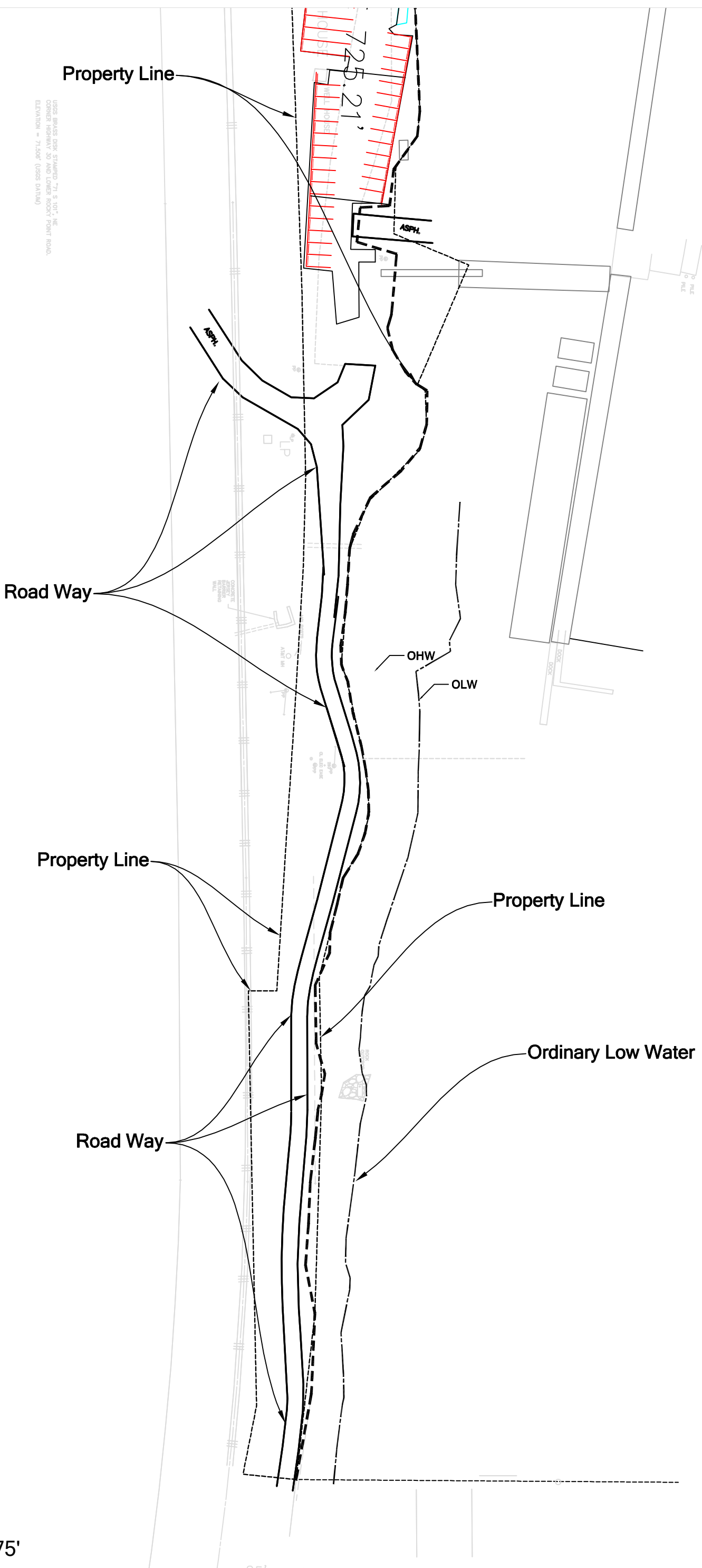


<b>Flowing solutions</b>  Flowing Solutions 3305 SW 87th Avenue Portland, OR 97225 Phone (503) 297-6331 Fax (503) 297-6053	TITLE: EXHIBIT 2E - IRREVOCABLY COMMITTED EXCEPTION GOAL 14		REVISED: 7/14/09
	ROCKY POINT MARINA 23586 NW ST. HELENS ROAD PORTLAND, OR 97231	RIVER: MULTNOMAH CHANNEL DATUM: NGVD	SHEET NO. <b>6</b>



SCALE 1"=250'  
1" INCH

<div><div>Flowing solutions</div><div>Flowing Solutions 3305 SW 87th Avenue Portland, OR 97225 Phone (503) 297-6331 Fax (503) 297-6053</div></div>	TITLE: EXHIBIT '3" COMBINATION UTILITY PLAN (SEWER-FIRE-TRANSFORMERS)		REVISED: 7/14/09
	ROCKY POINT MARINA 23586 NW ST. HELENS ROAD PORTLAND, OR 97231	RIVER: MULTNOMAH CHANNEL DATUM: NGVD	SHEET NO. 7



SCALE 1"=75'

Flowing solutions



Flowing Solutions  
3305 SW 87th Avenue  
Portland, OR 97225  
Phone (503) 297-6331  
Fax (503) 297-6053

TITLE: EXHIBIT '4" PROPERTY LINE-ROAD LOCATION

ROCKY POINT MARINA  
23586 NW ST. HELENS ROAD  
PORTLAND, OR 97231

RIVER: MULTNOMAH CHANNEL  
DATUM: NGVD

REVISED:  
7/14/09

SHEET NO.  
8

EASEMENT (PROJECTED)

EXISTING BUILDING

POWER EASEMENT

EXISTING BUILDING

POWER EASEMENT

EXISTING BUILDING

50.0'

50' WIDE POWER LINE EASEMENT  
BOOK 2029 PAGE 61 RECORDED 9-20-1960  
BOOK 2050 PAGE 38 RECORDED 2-24-1961

N 03°34'42"E 725.21'

Willamette Slough

SCALE 1"=200

**Flowing solutions**



Flowing Solutions  
3305 SW 87th Avenue  
Portland, OR 97225  
Phone (503) 297-6331  
Fax (503) 297-6053

TITLE: EXHIBIT '4" POWER LINE EASEMENT

ROCKY POINT MARINA  
23586 NW ST. HELENS ROAD  
PORTLAND, OR 97231

RIVER: MULTNOMAH CHANNEL  
DATUM: NGVD

REVISED:  
7/14/09

SHEET NO.  
**9**