

Department of Community Services

Land Use & Transportation Planning and Code Compliance

Board of County Commissioners Briefing,
December 3, 2013

Overview

- Introduction
- Planning- who we are and what we do
- Planning Process
- Partnerships
- Next Steps



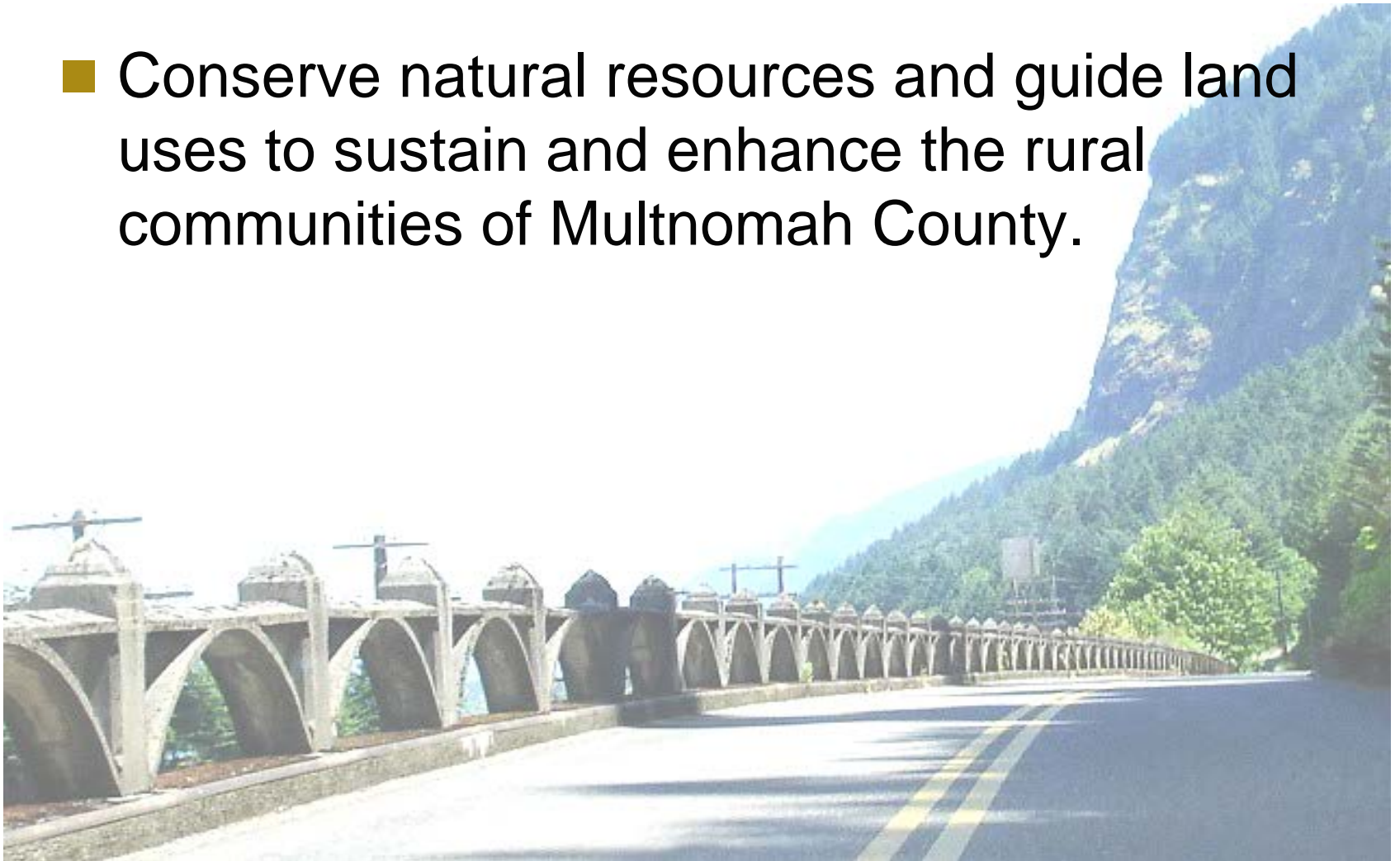






Land Use Planning Mission

- Conserve natural resources and guide land uses to sustain and enhance the rural communities of Multnomah County.



Land Use Planning Values

(adopted by BCC 1999 & 2007)

■ We value the preservation and protection of:

- Wildlife
- Streams
- Scenic Views
- The Gorge
- Forest Lands
- Farm and Nursery production



Multnomah County



■ Land Area

- Rural - 60%
- Urban - 40%

■ Population

- Rural - <2% (12,000)
- Urban - 98% (713,000)

Roles & Responsibilities

■ Current Planning:

- Customer assistance
- Recommends land use decisions



Roles & Responsibilities

- **Long Range/Legislative Planning:**
 - Planning Commission
 - State legislative review
 - Regional policy (MTAC/MPAC)



Roles & Responsibilities

■ Transportation:

- Development Review
- Capital Improvement Plan & funding
- Regional policy (TPAC/JPACT)
- Active Transportation



Roles & Responsibilities

■ Code Compliance:

- Resolves land use and transportation violations
- Voluntary compliance

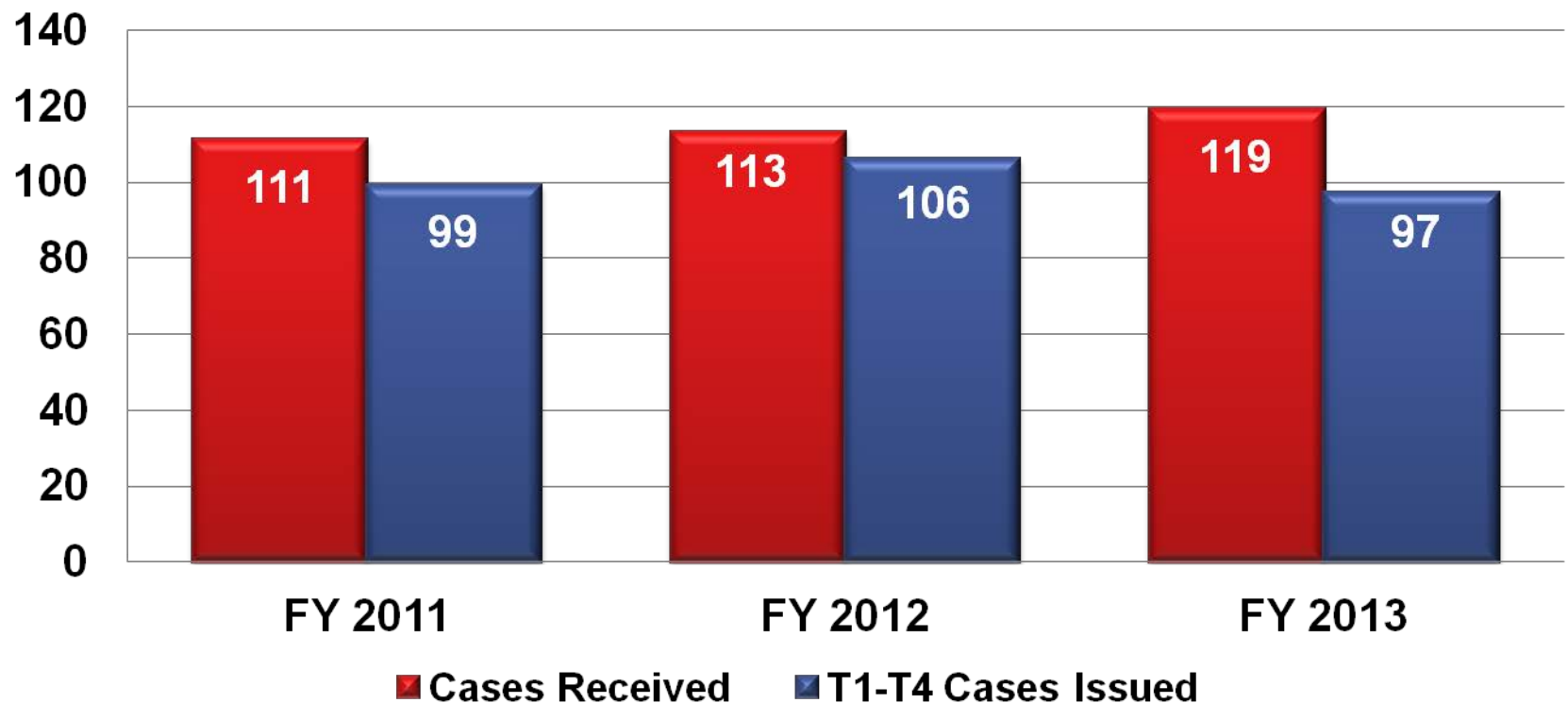


Public Contacts

Three Year Average FY11, FY12, and FY13

Calls Received	7036
Walk-In Customers	2008
Pre-Application Meetings	134

Applications Processed



Most Common Applications

- Grading Erosion Control, Floodplain
- National Scenic Area Review
- Environmental Permits
- Code Interpretations/Determinations

Approval Business

- Three year average for FY11, FY12, FY13

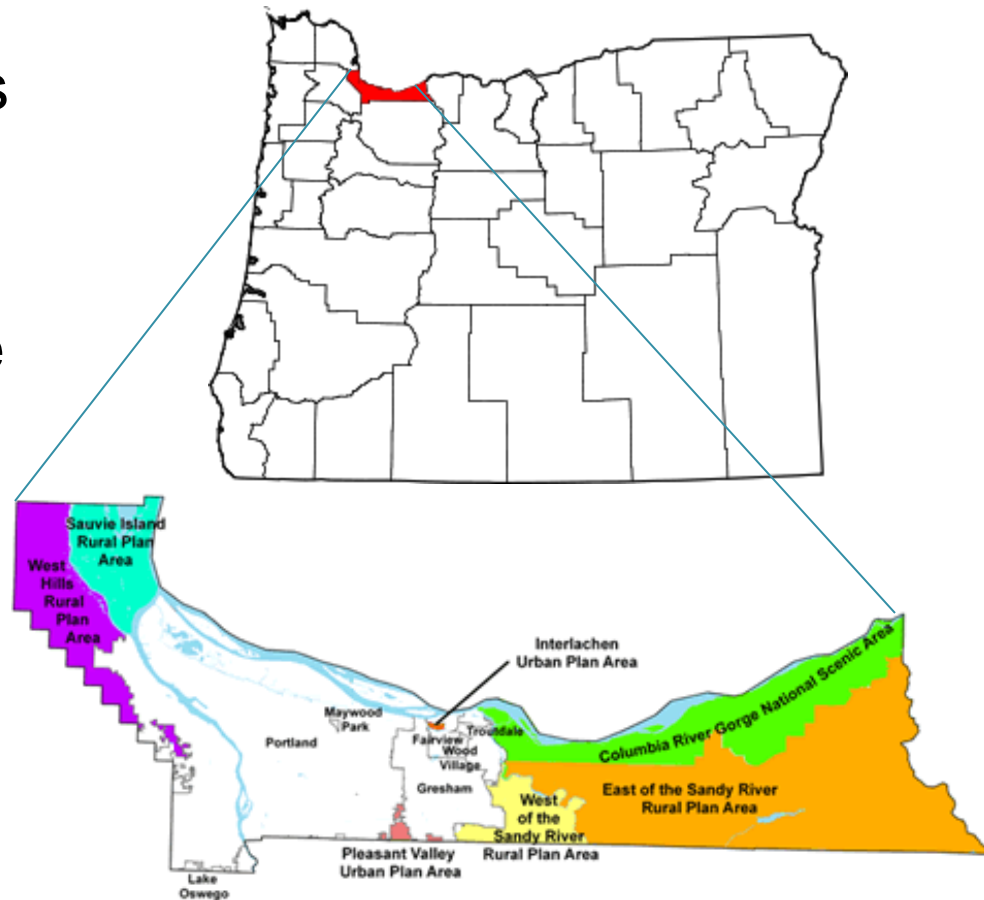


■ Applications
Denied - 4 (4%)

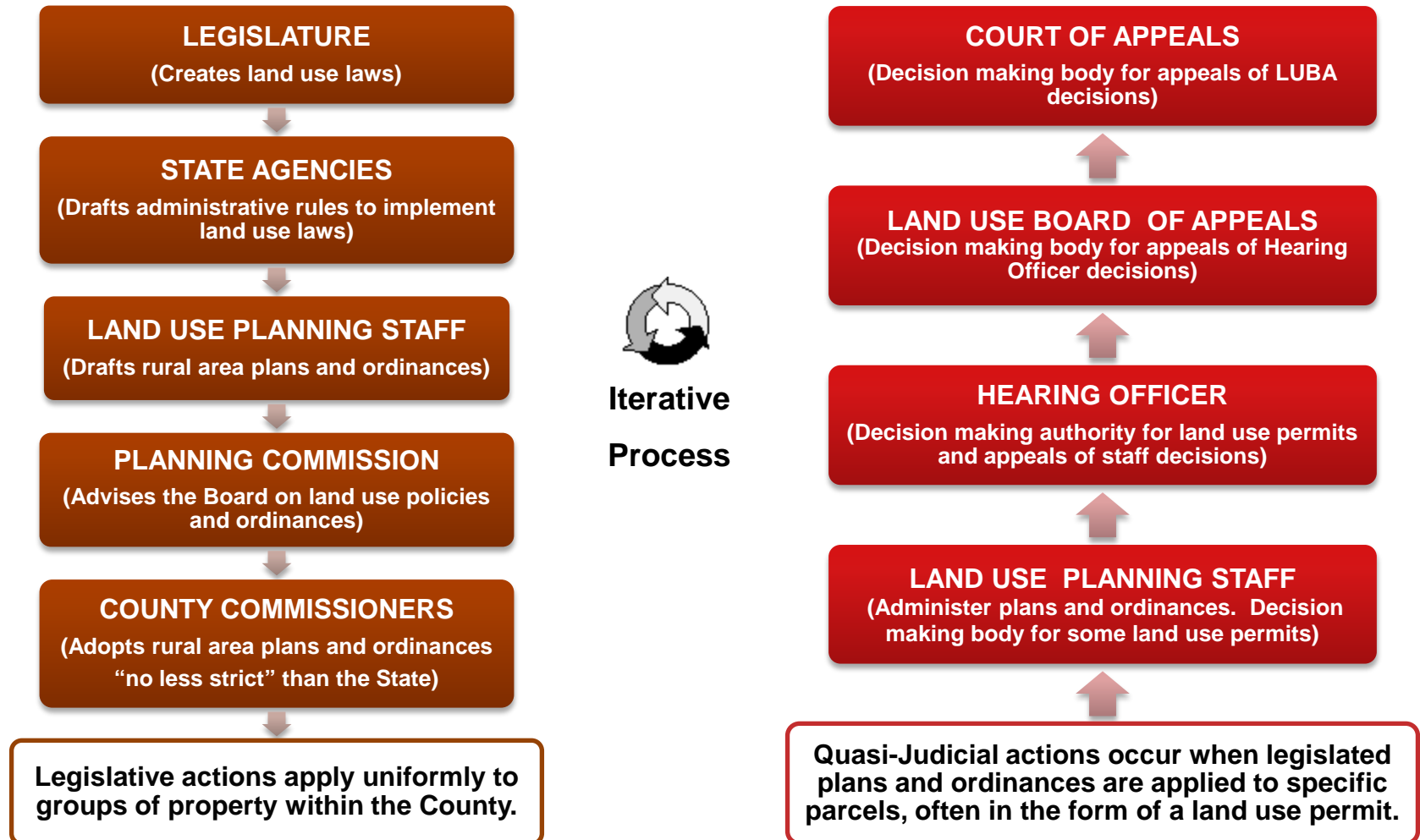
■ Applications
Approved - 88 (96%)

Planning Authority

- Statewide Planning goals established in 1973
- County's Comprehensive Framework Plan (Comp Plan) adopted in 1977/1980
- Four Rural Area Plans adopted between 1996 and 2002, plus the Scenic Area Management Plan



Land Use Planning Processes



Partnerships

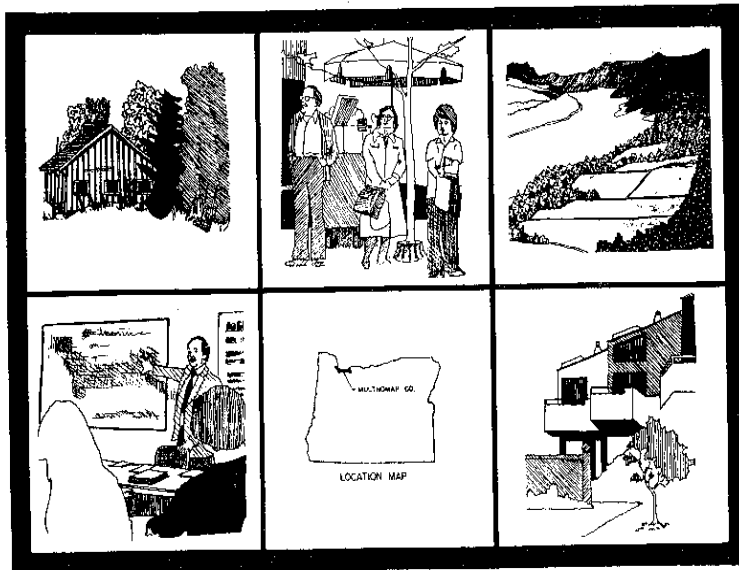


Changes

- Measures 37 and 49
- Urban Growth Boundary (UGB) expansion
- Urban & Rural Reserves
- Area 93
- New Policies:
 - Equity, Climate Action Plan, Natural Hazards Plan and Food Action Plan

Next Steps

comprehensive framework plan



MULTNOMAH COUNTY OREGON



Rural Area Plans

Questions?

