



Board of County Commissioners

**Project Report
January 19, 2017**

Agenda

- Project Management Dashboard
- Equity Dashboard
- Construction Update
- Project Review

Project Management Dashboard

Schedule Milestones

	Estimated Completion	Status
- Long-Term Maintenance IGA	Winter '17	On-going
- Prelim. Greenroads Cert.	Winter '17	On-going
- Final Property Transfers	Winter '17	On-going
- Metro Agreement	Winter '17	On-going
- Replaced Trolley Facilities	Winter '17	On-going
- Overall Project completion	Winter '17	On-going

Recent & Upcoming Meetings and Board Actions

- BCC Briefing	4/19/16
- BCC Briefing	6/21/16
- BCC Briefing	9/1/16
- BCC Briefing	10/25/16
- Final BCC Briefing	1/19/17

Public Involvement

Thru December, 2016

- Neighborhood notification of construction near homes, each side of river

December 2012 Project Funding Plan

Multnomah County VRF (Collected)	\$ 22,708,000
Multnomah County VRF (Bonded)	\$ 141,684,000
City of Portland	\$ 74,750,000
Oregon Jobs and Transportation Act	\$ 30,000,000
2012 Oregon Legislature	\$ 5,000,000
Federal funds carryover from planning	\$ 15,658,000
Federal TIGER III Act	\$ 17,700,000
TOTAL	\$ 307,500,000*

*VRF provides adequate funds to cover anticipated County expenditures

Stakeholder Issues

Thru December, 2016

- Construction traffic
- Complaints about PBOT signals at each end of bridge
- Resumption of TriMet service across bridge in December

Project Expenditures (post-ROD)

Thru Aug, 2016

	\$ Spent	Status
ROW	\$ 27,380,343	As of Dec 31, 2016 the projected cost is anticipated to be \$325,147,746 at completion, which is 5.7% above the December 2012 project budget.
Design/pre-con.	\$ 29,189,845	
Construction	\$ 259,843,927	
Grand Total	\$ 316,414,115	

Social Equity

Thru October, 2016

A&E Team (Design) Sep '12	Goal	To Date	Status
DBE	7%, (\$1.0m)	9.2%	Complete
MWESB	13%, (\$1.8m)	15.7%	Complete
CM/GC Contractor	Goal	To Date	Status
DBE (Committed)	4%	4.0%	On Target
DMWESB (Contracted)	20%	20.5%	On Target
Workforce Women	14%	13.0%	Near Target
Diversity Minority	20%	28.5%	Above Target

Note: DMWESB goals/targets published Sept 2011 from CM/GC in subcontracting plan.

News Headlines

- [Buses to once again roll across the Sellwood Bridge \(KOIN\)](#)
- [Slayden-Sundt Joint Venture finish Sellwood Bridge \(Portland Tribune\)](#)
- [Traffic relief on the way as Sellwood Bridge construction wraps up \(KATU\)](#)
- [Motorists constantly making illegal turns onto Tacoma St. \(Sellwood Bee\)](#)

Followers: - Weekly email updates = 813
- Twitter account = 1563

Sustainability

- Greenroads Certification progress (interim) review - pending comments
- Reuse and recycling of onsite materials continues

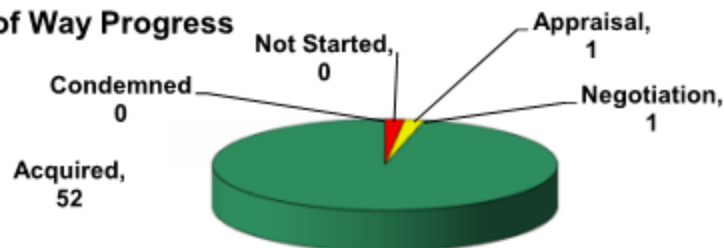
Design Accomplishments

- N/A

Construction Accomplishments

- Main bridge open to all users
- Interchange open to all users

Right of Way Progress



ROW actions to be completed = 54
Current as of February, 2016

Upcoming Site Work

- Complete planting
- Maintain site erosion control measures
- Complete greenway trail
- Complete condo site work
- Project punch list

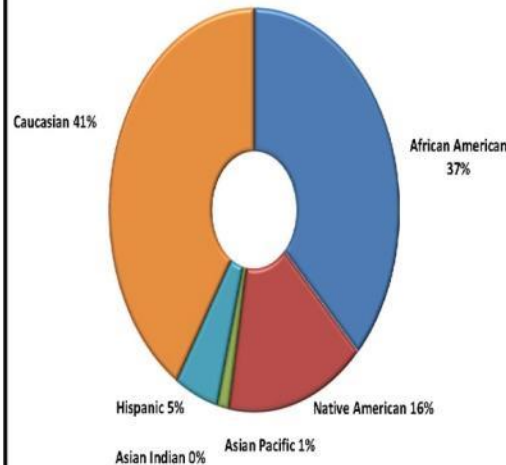
Diversity Dashboard

January 2017 Sellwood Small Business Dashboard

Summary

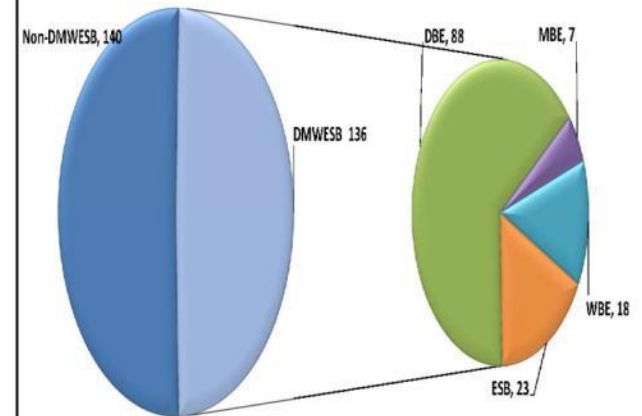
- These charts are based on contracts and dollars awarded.
- The contractor's goal is to award 20% of total contract dollars to DMWESB firms. Currently, the DMWESB Contracted is 20.49% and the DMWESB Paid is 18.94%.

DMWESB Ethnicity

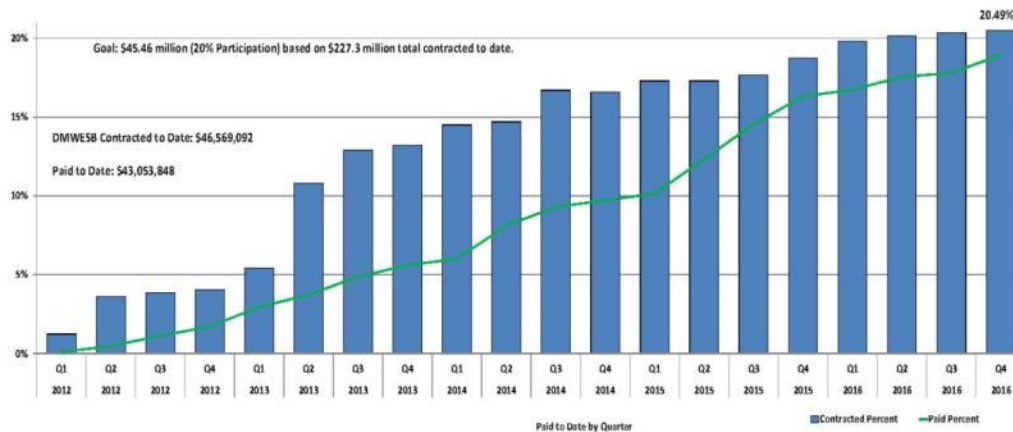


Total Contracts Awarded

Total Contracts - 276



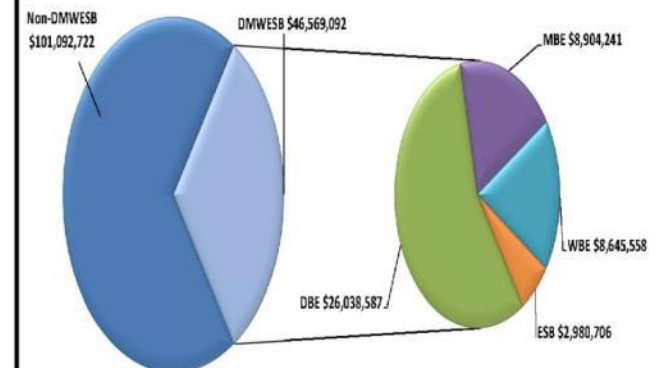
DMWESB Participation and Paid to Date



Total Subcontracted Dollars Awarded

\$147,661,814

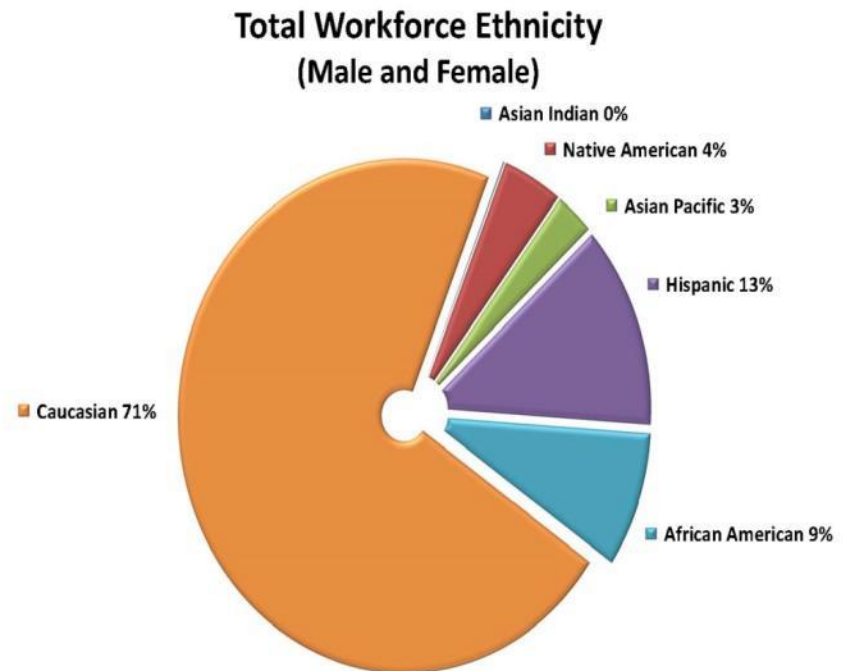
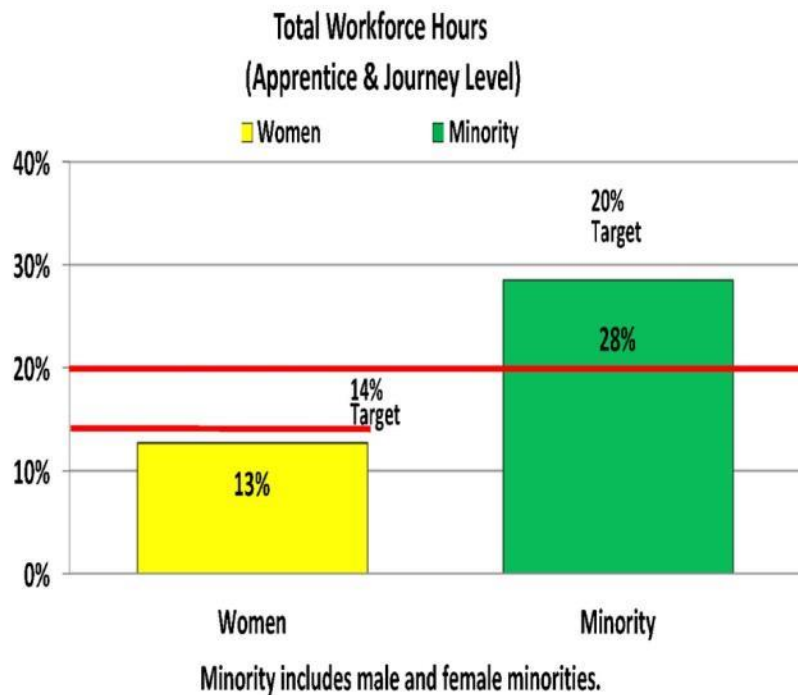
Total Project Contract Amount
\$227,329,612



Glossary: DBE—Disadvantaged Business, MBE—Minority-Owned Business, WBE—Women-Owned Business, ESB—Emerging Small Business

Summary

- SSJV is exceeding the target for minorities and below the target for women.



Summary

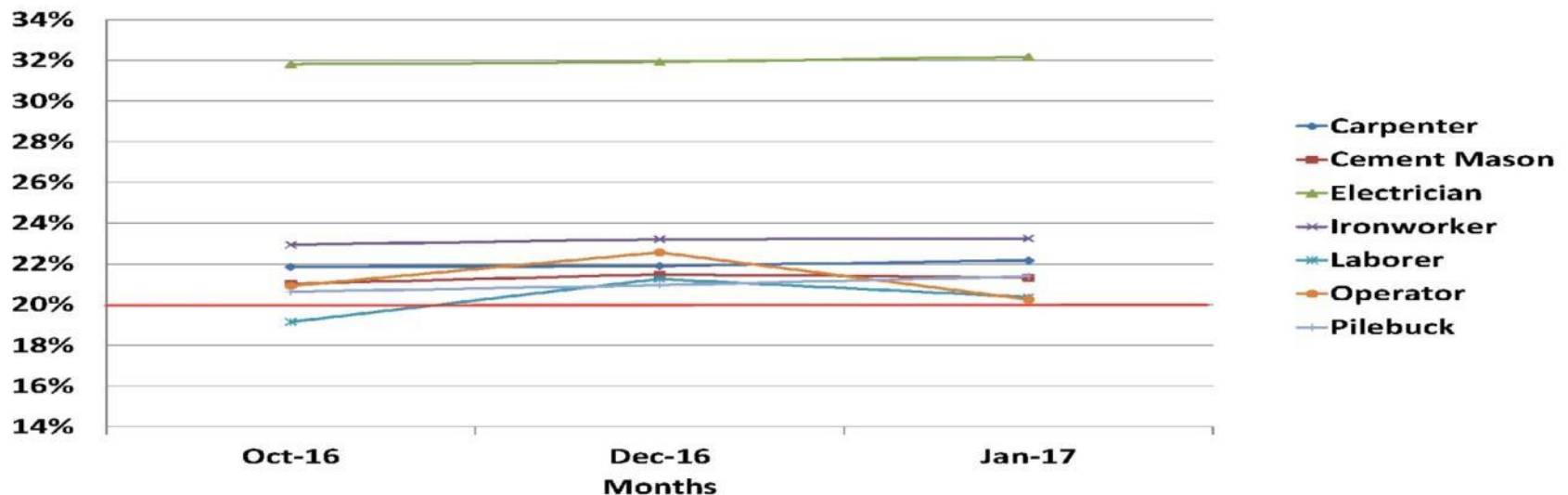
The following chart represents total apprenticeship hours by trade for all subcontractors working on the project. Any contractor over \$100K is required to achieve 20% apprenticeship hours by trade per the County's Workforce Training and Hiring Program. Multnomah County allows for exceptions to the apprenticeship requirement based on low hours, complexity of work, safety, and other considerations. The chart reflects apprenticeship including contractor exceptions.

Apprenticeship Highlights

Through October 2016, 306 apprentices have worked over 138,900 hours. Of the 306 apprentices 37% are minorities and 20% are women. Total Project Apprenticeship is 22.22%

Apprenticeship by Trade

Goal: 20% Apprenticeship by Trade



Construction Update

Sellwood Bridge Replacement Project Information

- Over 99% complete construction
- Bridge and interchange open to traffic
- Work remaining:
 - West side trolley track crossings
 - Multi-Use Path Bridge
 - Some planting and grading
 - East side Greenway Trail
- Overall Project Cost (estimated) - \$325 M

Construction Progress

(thru 12/31/16)

	Detour Bridge	Land- slide	Condo. Mods.	Work Bridge	OR 43 Walls	Bridge & IntX	Total
Total Value	\$20.68	\$13.21	\$4.50	\$9.42	\$12.75	\$166.94	\$227.51
Paid to dt	\$20.68	\$13.21	\$4.26	\$9.42	\$12.31	\$162.65	\$222.53
	100%	100.0%	94.5%	100.0%	96.5%	97.4%	97.8%

Costs in millions



12/13/16
Courtesy of ODOT

Work

- Landslide stabilization (complete)
- Stephen's Creek culvert (complete)
- Work bridges (complete)
- In-river foundations (complete)
- Miles Place (complete)
- Macadam Bay Driveway (complete)
- Regional Trail (complete)
- Riverview Cemetery (complete)
- West OR 43 retaining walls (complete)
- East OR 43 retaining walls (complete)
- OR 43 roadway (complete)
- Waterline relocation (complete)
- Powers Marine Park (complete)
- West approach (complete)
- Landscape (minor)
- Reinstall Trolley Tracks (complete)
- MUP Bridge (minor)
- Remove old bridge piers (Pier 19)
- Main bridge piers (complete)
- Steel fabrication (complete)
- Steel installation (complete)
- Main bridge concrete (complete)
- Remove detour and work bridges (complete)
- Traffic on new bridge (complete)
- East approach (complete)
- Tacoma St. (complete, signal timing)
- RACC Art - Tacoma Street (minor)
- Condominium rebuild (complete)
- Eastside Greenway Trail (paving)

Project Review



Large Cracks



Sag



Twist



2005

- Land slide
- Weight limits
- No funding
- No buses
- Poor for cyclists and pedestrians
- Constrained interchange
- Sufficiency Rating = 2

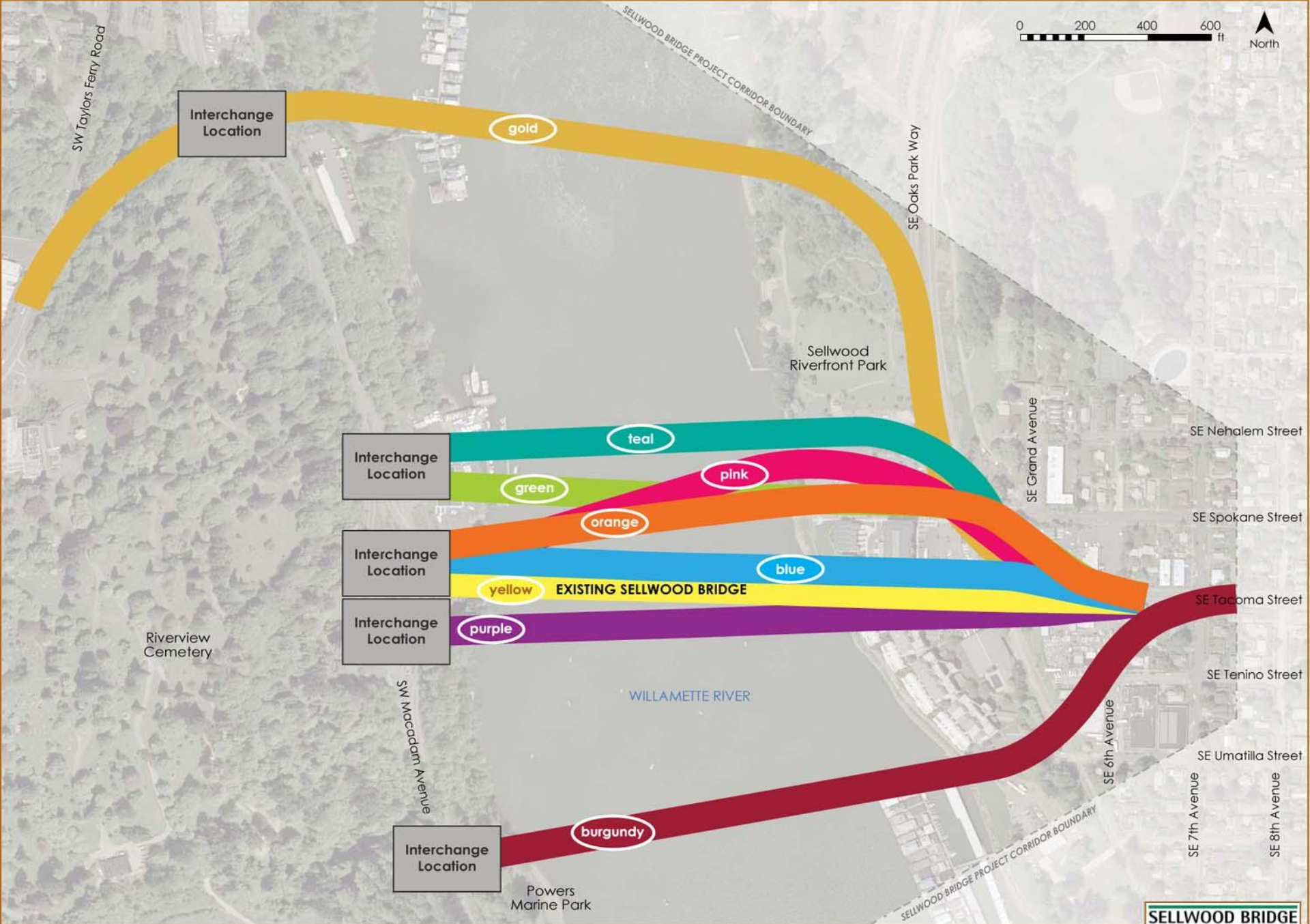


Multnomah County Response

- Board of Commissioners Leadership – committed County staff
- Strong Partnerships
 - State and Federal legislators
 - City of Portland
 - Oregon Department of Transportation
 - Federal Highway Administration
 - Metro
 - TriMet / Willamette Shore Consortium
 - Consultant Community:
CH2M, TY Lin International, David Evans and Associates, Cornforth, JLA
- Transparent Public Process

Board of Commissioners' Values

- Equity and Diversity
- Sustainability
- Public Involvement
- Cost management
- Risk Management
- Schedule



Interchange Location

gold

Interchange Location

teal

green

pink

Interchange Location

orange

blue

Interchange Location

yellow

EXISTING SELLWOOD BRIDGE

purple

SW Macadam Avenue

Interchange Location

burgundy

Powers Marine Park

WILLAMETTE RIVER

SELLWOOD BRIDGE PROJECT CORRIDOR BOUNDARY

SE Oaks Park Way

SE Grand Avenue

SE 6th Avenue

SE 7th Avenue

SE 8th Avenue

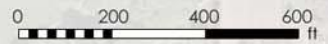
SE Nehalem Street

SE Spokane Street

SE Tacoma Street

SE Tenino Street

SE Umatilla Street

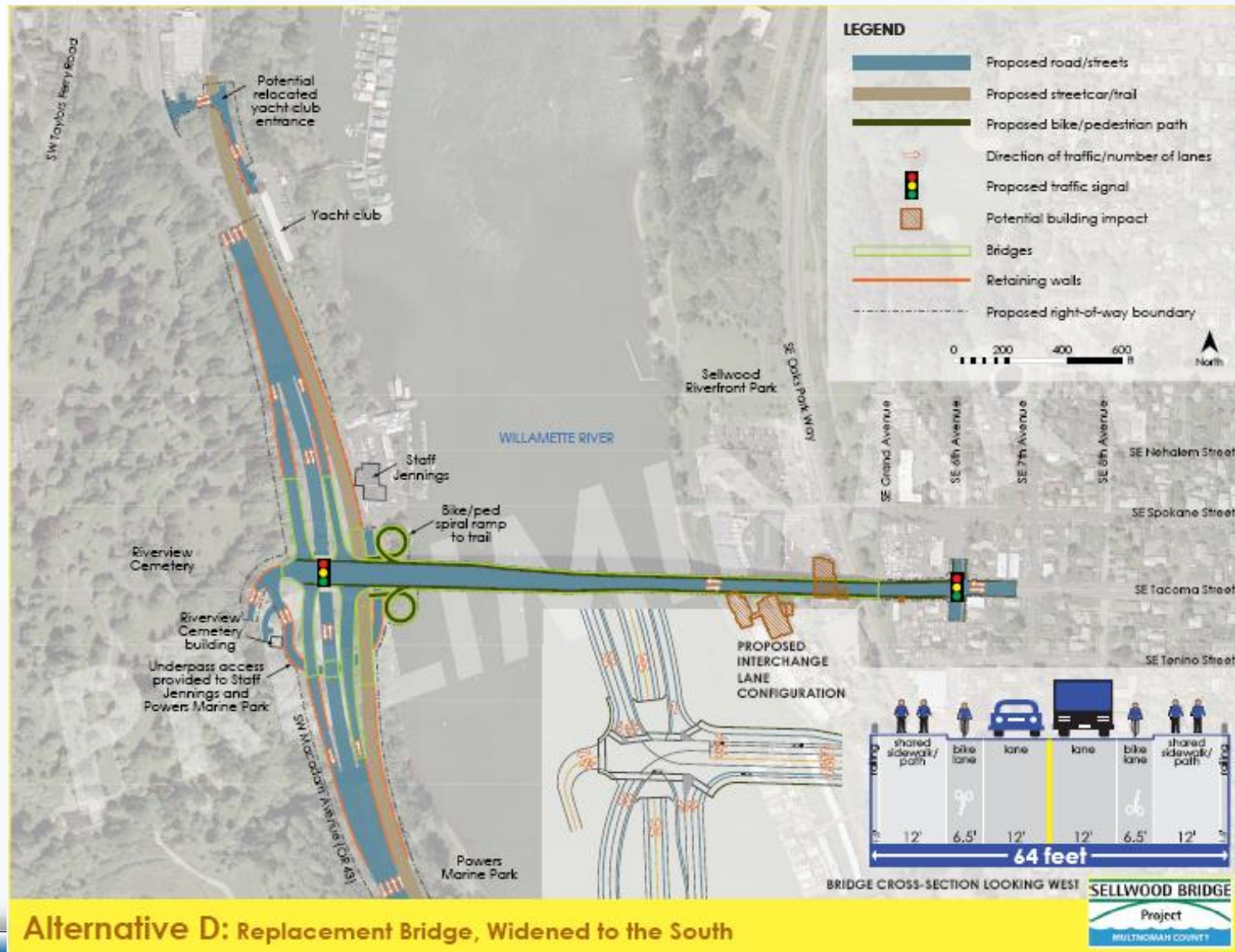


Bridge Alignment Concepts



Alternative D

- Bridge replacement
- 64' cross-section—2-lane, 6.5' bike lanes, 12' sidewalks
- Signalized interchange on west side
- Full signal on east side
- Staged construction, no closures
- 5 residences, 9 businesses displaced



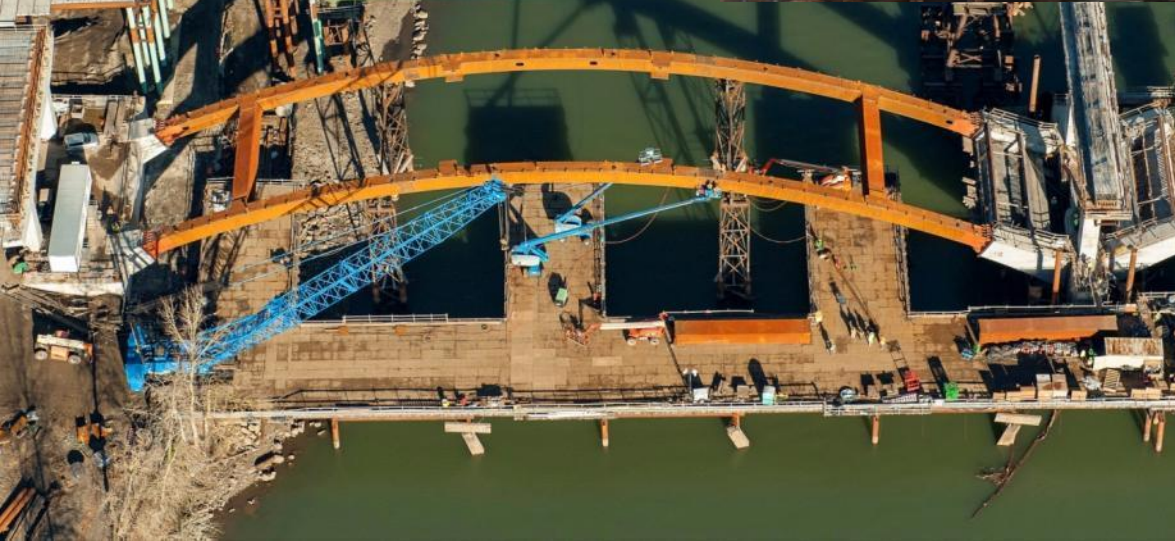
Ground Breaking



Bridge Move



Steel Installation





February 27, 2016











TRIMET

SOUTH

43

3530





09/17/12

Courtesy of ODOT



12/13/16
Courtesy of ODOT



11/17/16
Courtesy of ODOT

Innovation

- Build a Bridge
- Online Surveys
- Construction Manager/General Contractor
- Bridge Move
- Perched Cofferdam
- Green Roads

Diversity and Equity

- 20.4% DMWESB contracting - \$46.5M
- 28% minority workforce
- 13% women workforce
- Over 136,000 apprentice hours
- 2 - Small General Contractor packages

Lessons Learned

- Collaboration is key
- Transparency
- Values drive process
- Build momentum
- Flexibility and resilience

Community Asset

- Multi-modal – Cyclists, Pedestrians, Cars, Buses, Trails, Streetcar ready
- Seismically resilient
- Landslide restrained
- ADA compliant
- Sustainable
- Aesthetically pleasing

Sellwood Timelapse

<https://youtu.be/Okj2mUGOCCk>



