



# Regional Equity Atlas

The Portland Metro Region's Geography of Opportunity

[equityatlas.org](http://equityatlas.org)

[clfutur.org](http://clfutur.org)



PHOTO:  
HOME FORWARD

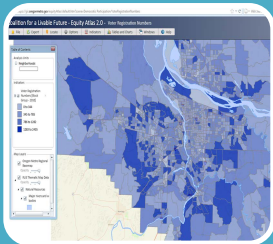
# What is the Regional Equity Atlas?

A tool to understand how well different neighborhoods and populations across the region

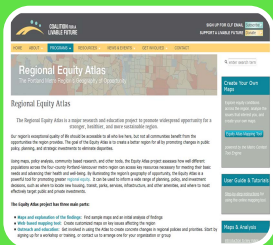


ousing • Education • Transportation • Health • Food • Clean Air • Nature • Service

# Regional Equity Atlas 2.0 Components



Web-based mapping tool

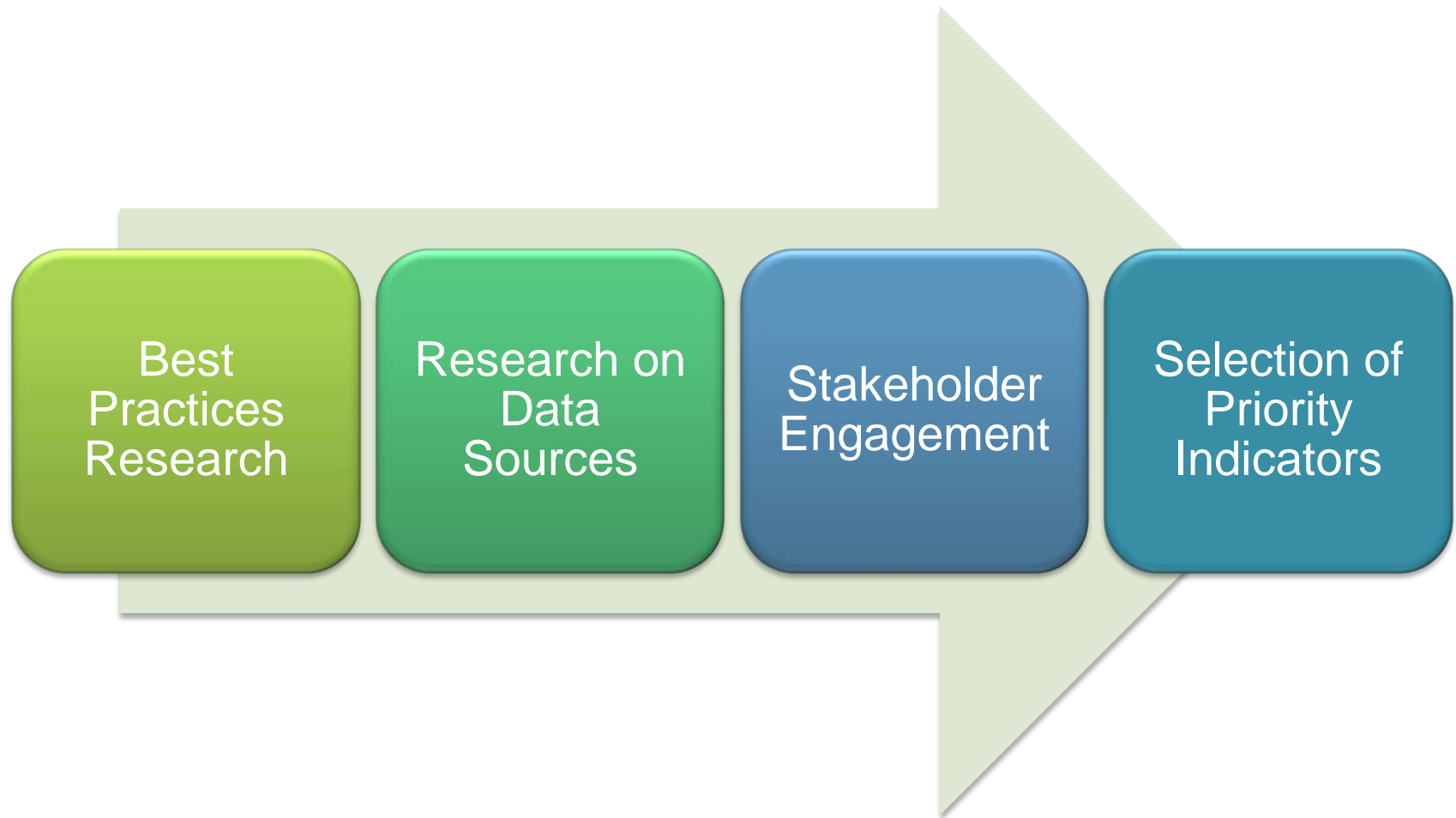


Interpretive website



Outreach & education

# Identifying Which Issues to Map



- Race & Ethnicity
- Income
- Age
- Population Density
- Household Composition

## Demographic Indicators



- Community
- Democratic Participation
- Economic Opportunity
- Education
- Food
- Health Care
- Healthy Environment
- Housing
- Parks and Nature
- Services and Amenities
- Transportation

## Access Indicators



- **Preventive Care**
- **Primary Care Facilities and Health Clinics**
- **Providers that Accept Medicaid and Medicare**

**Health Care**



- **Body Mass Index**
- **Birth Outcomes**
- **Asthma**
- **Diabetes**
- **Cardiovascular Disease**

**Health Outcomes**







# Equity Atlas use in Multnomah County



# Regional Equity Atlas

The Portland Metro Region's Geography of Opportunity

## SUN Service System

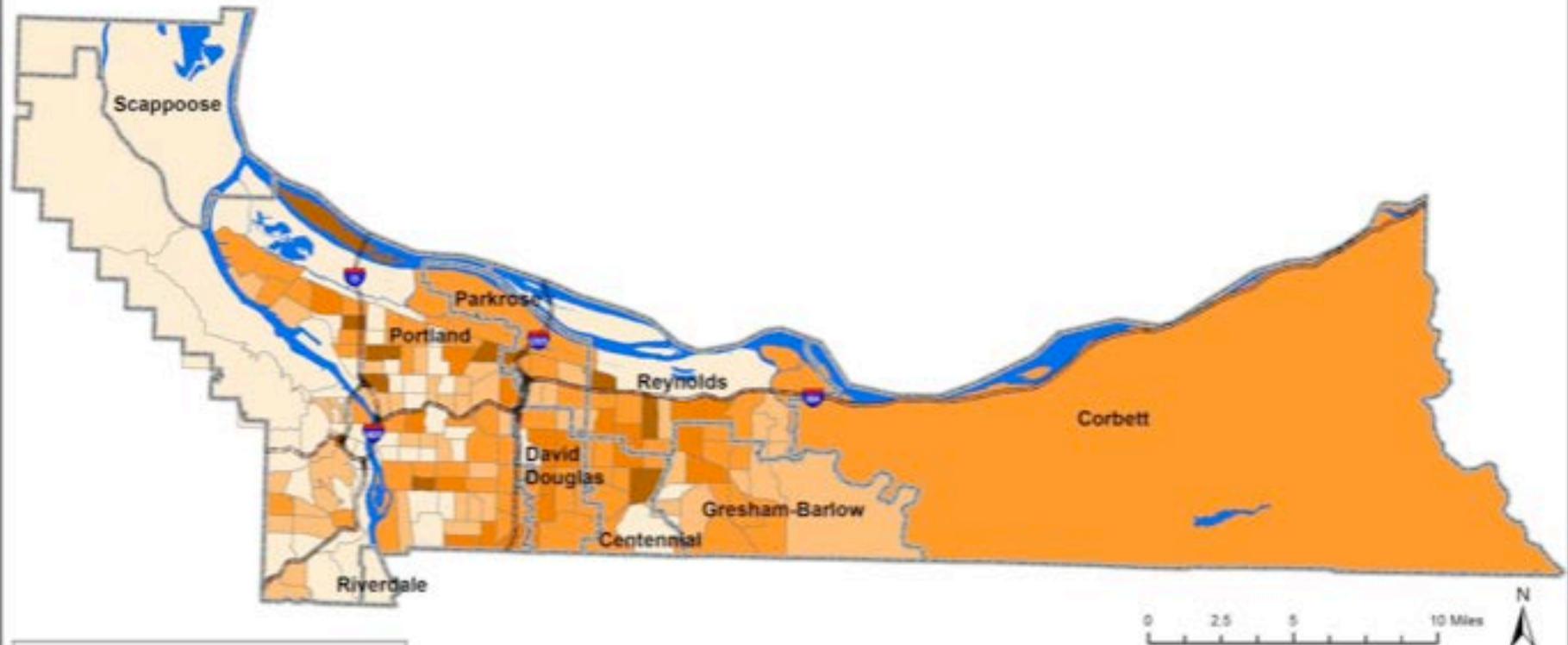


107 SE Washington St, Suite 239, Portland, OR 97214  
(503) 294-2889 [www.clfuture.org](http://www.clfuture.org)



# Percent Children in Poverty Age 0-17 (2010)

## Multnomah County, Oregon



### Legend

#### % Children in Poverty (2010)

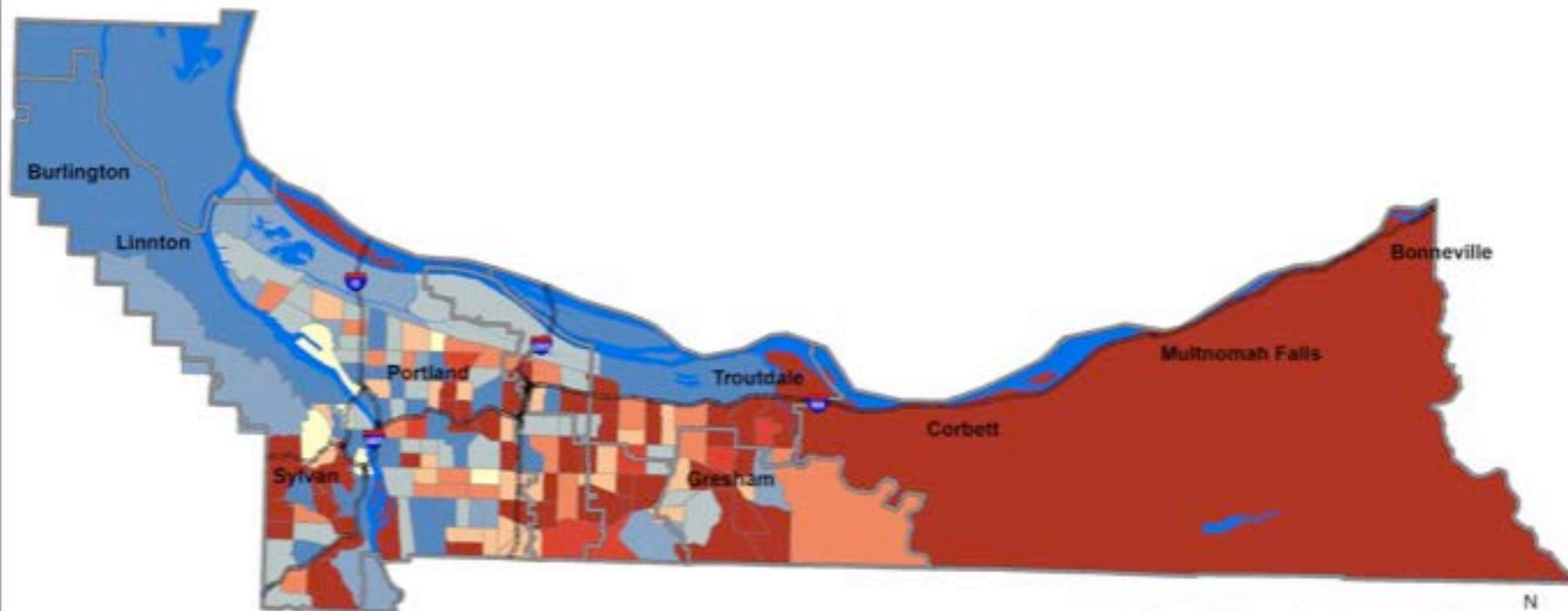
- 0% to 5%
- 6% to 15%
- 16% to 30%
- 31% to 45%
- 45% to 80%

Mult. Co. School Districts

Children in Poverty includes all children below the federal poverty level.  
Data Source: American Community Survey (2010 5-Year Estimates)

# Percent Change in Total Children in Poverty Age 0-17 (2000-2010)

## Multnomah County, Oregon



### Legend

#### % Change Children in Poverty (00-10)

- 100% to -75%
- 74% to -50%
- 49% to -1%
- No Change
- 1% to 50%
- 51% to 75%
- 76% to 100%
- Over 100%

School District Boundaries

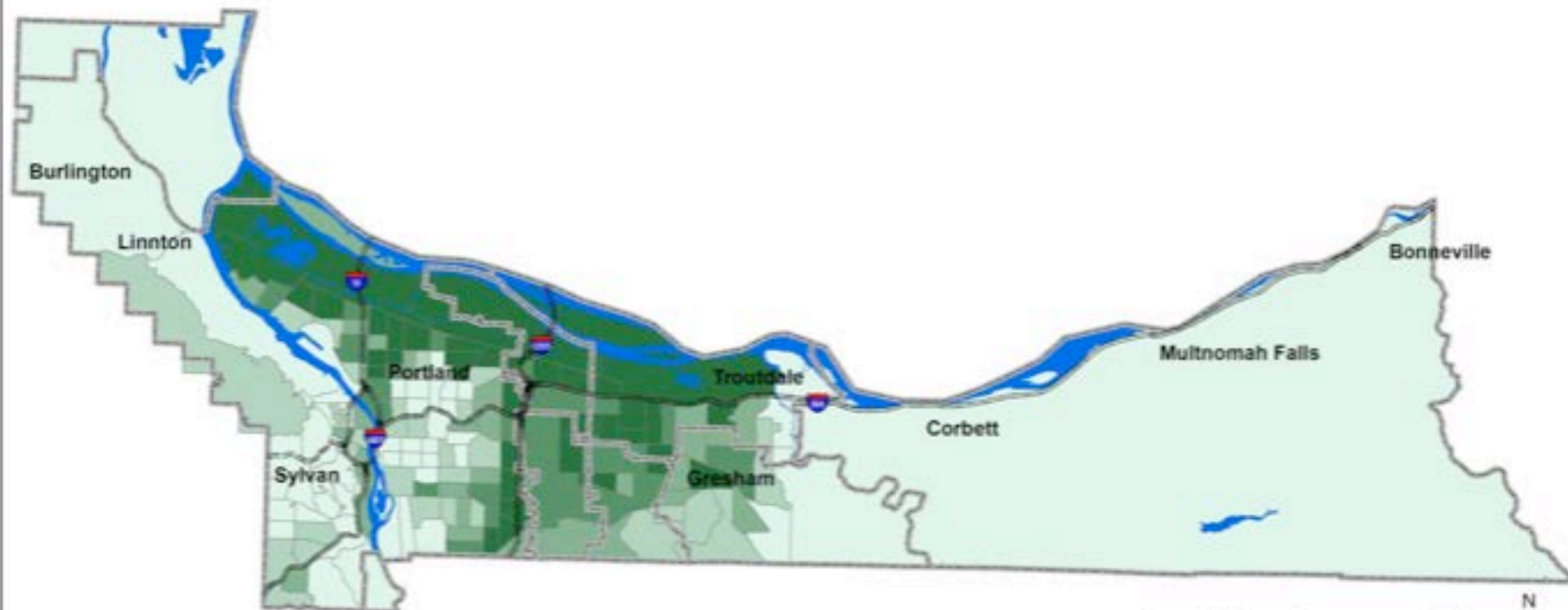
0 2.5 5 10 Miles



Children in Poverty includes all children below the federal poverty level.  
Data Source: American Community Survey (2000 & 2010 5-Year Estimates)

# Percent Children of Color Age 0-17 (2010)

## Multnomah County, Oregon



### Legend

#### % Children of Color (2010)

- 0% to 25%
- 26% to 35%
- 36% to 45%
- 46% to 55%
- 55% to 76%

School District Boundaries

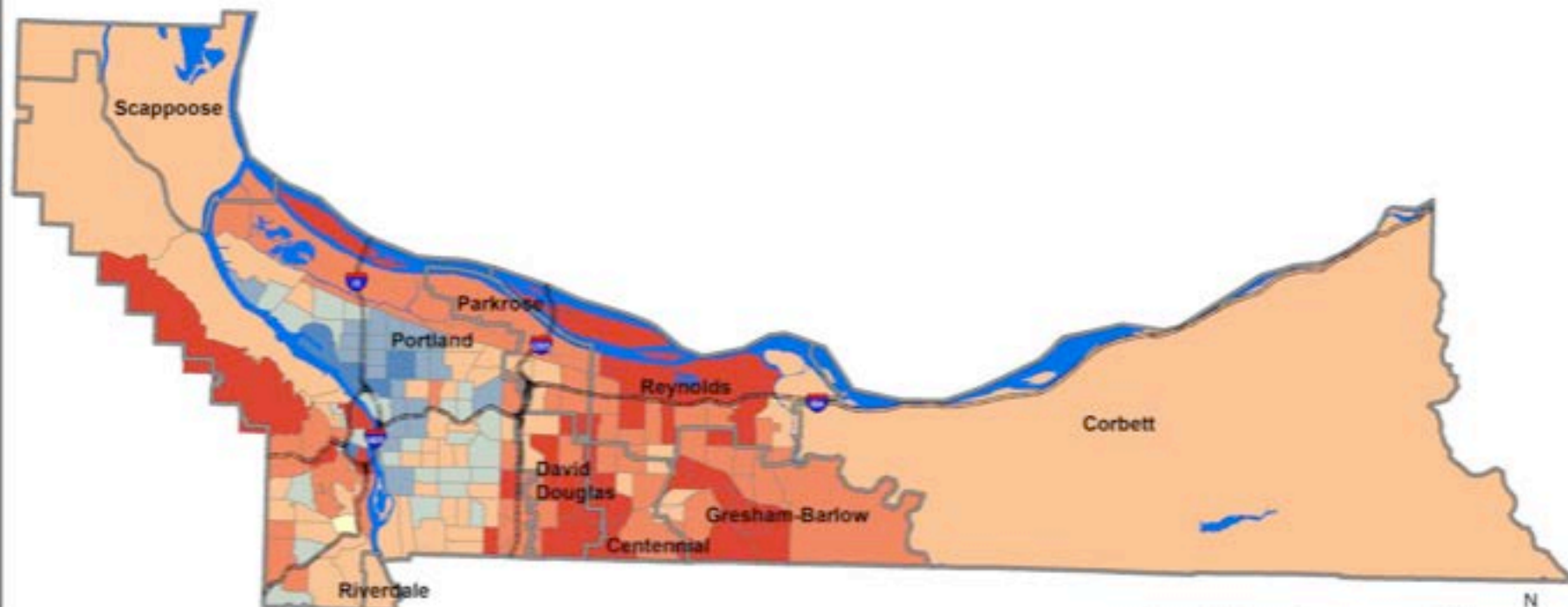
0 2.5 5 10 Miles



Children of Color includes all children except white, non-Hispanic.  
Data Source: U.S. Census (2010)

# Percent Change in Total Children of Color Age 0-17 (2000-2010)

## Multnomah County, Oregon



### Legend

#### % Change Children of Color (00-10)

- 100% to -50%
- 49% to -25%
- 24% to -1%
- No Change
- 1% to 50%
- 51% to 100%
- Over 100%

School District Boundaries

Children of Color includes all children except white, non-Hispanic.  
Data Source: U.S. Census (2000 & 2010)



# Regional Equity Atlas

The Portland Metro Region's Geography of Opportunity

# Department of County Human Services



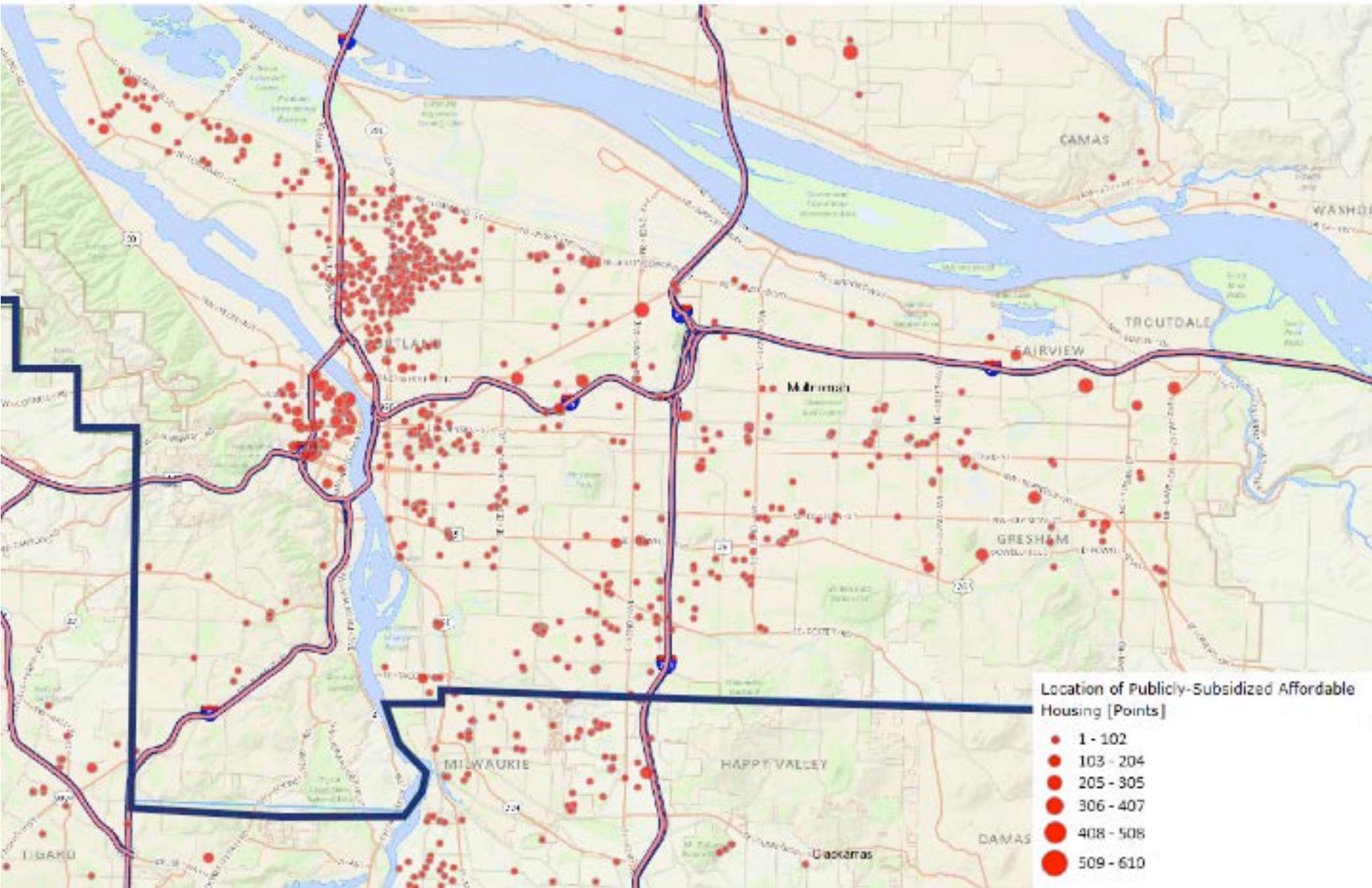
**COALITION FOR A  
LIVABLE FUTURE**

107 SE Washington St, Suite 239, Portland, OR 97214  
(503) 294-2889 [www.clfuture.org](http://www.clfuture.org)



# Location of Publically Subsidized Housing

Data Source: Metro's 2011 Regional Inventory of Regulated Affordable Housing



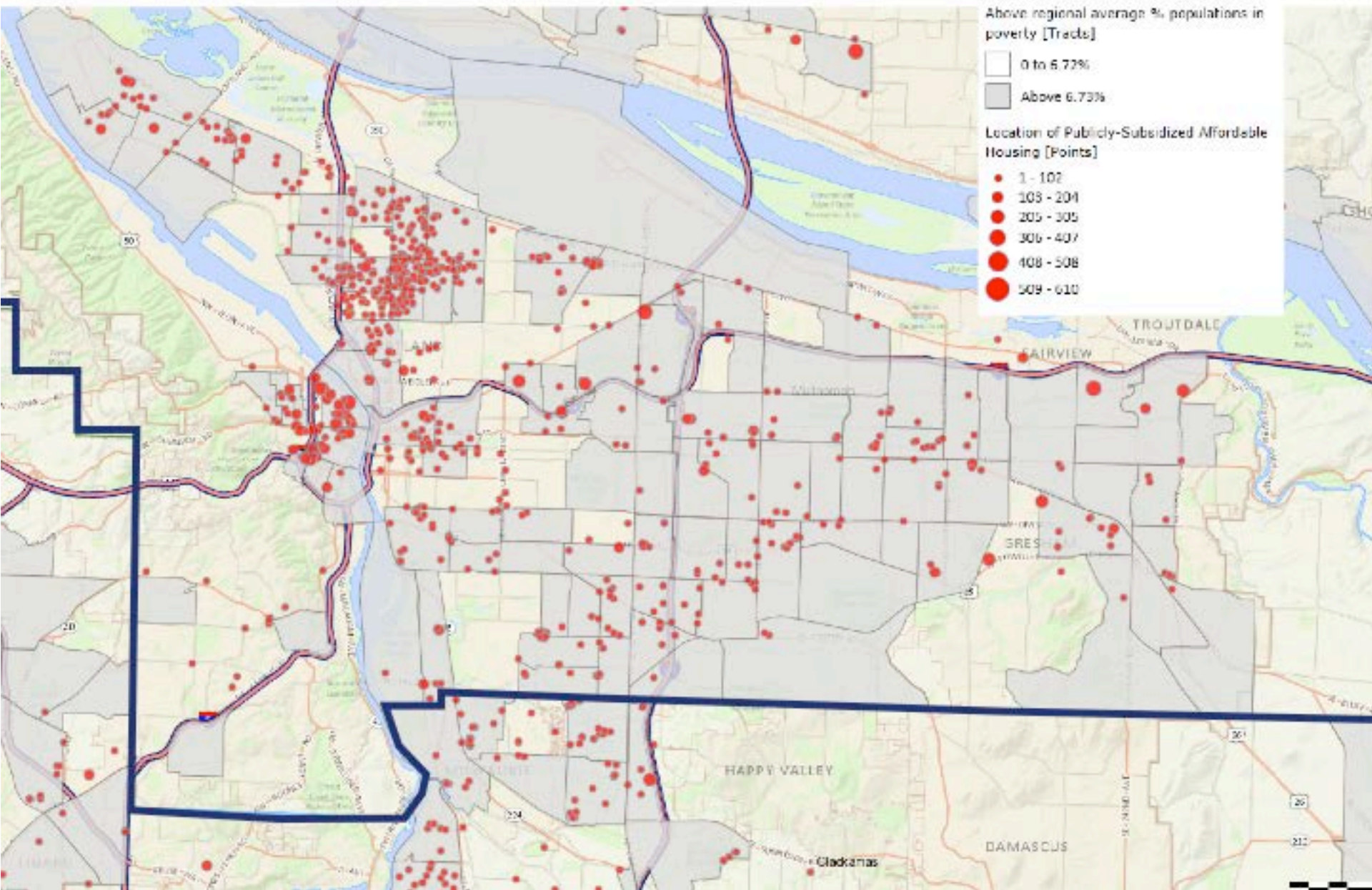
Location of Publicly-Subsidized Affordable Housing [Points]

- 1 - 102
- 103 - 204
- 205 - 305
- 306 - 407
- 408 - 508
- 509 - 610



# Location of Publically Subsidized Housing

Overlay: Above Regional % Average of Population in Poverty

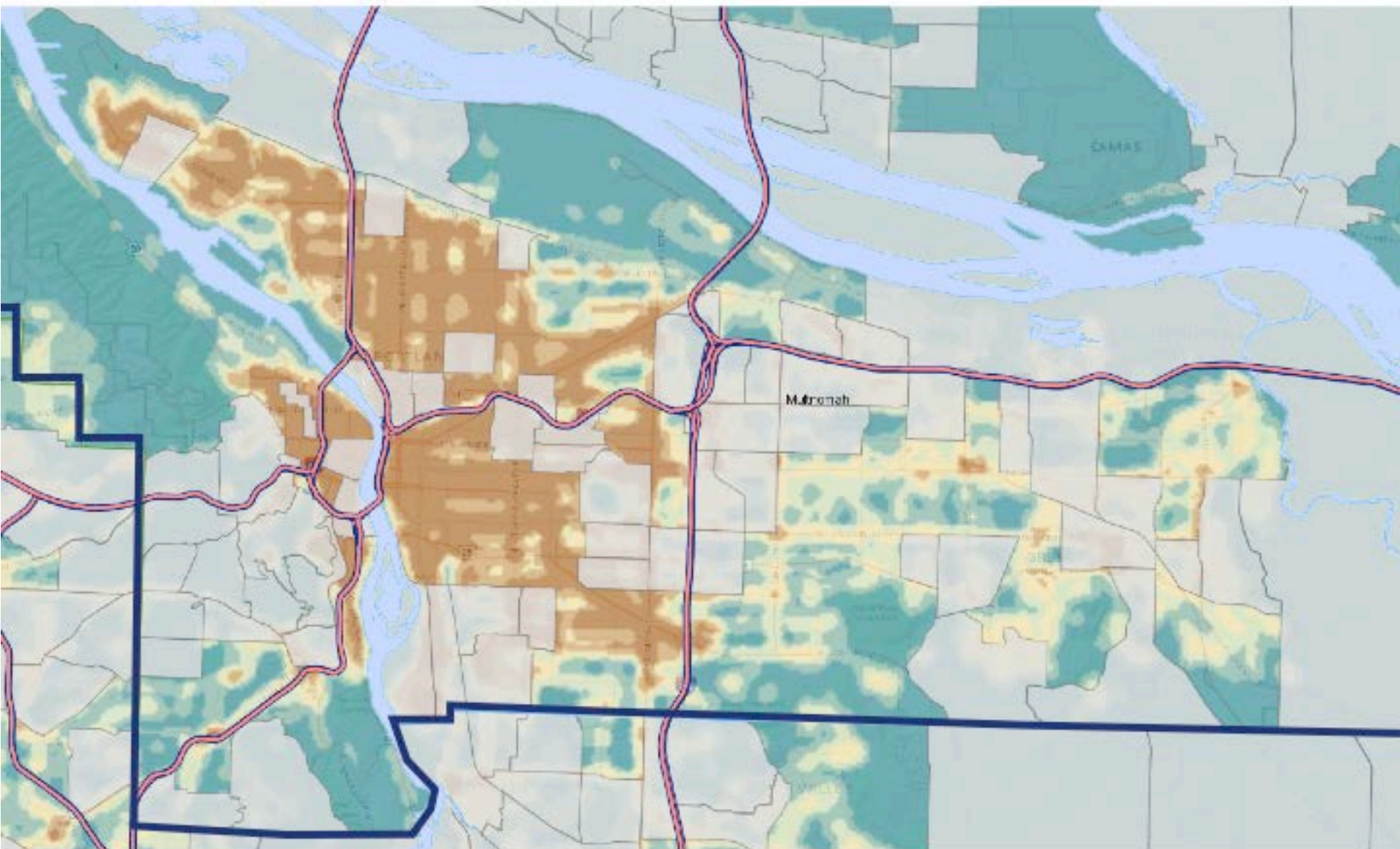






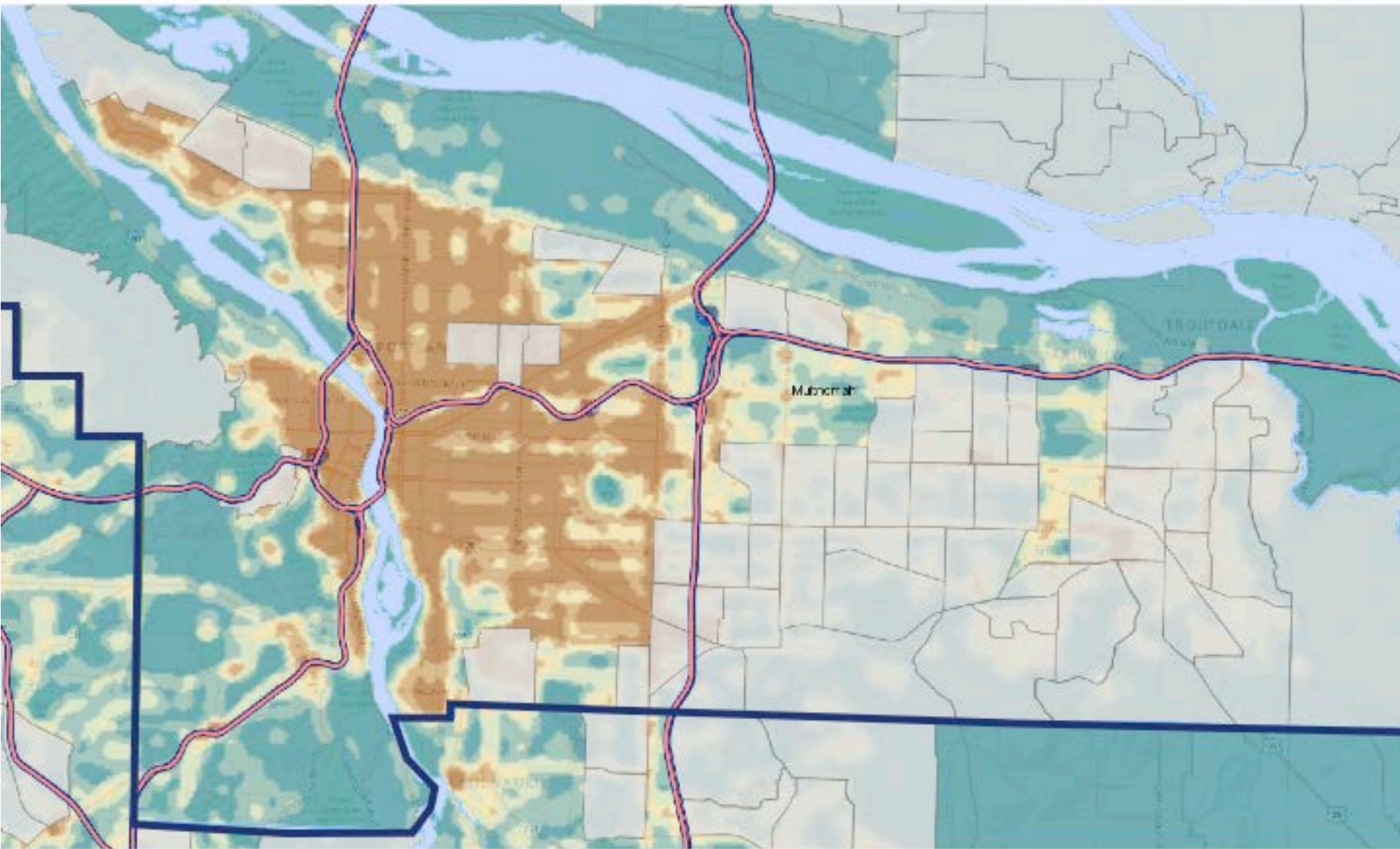
# Access to Transit and Sidewalk Density

Overlay: Above Regional % Average of Population Age 65+



# Access to Transit and Sidewalk Density

Overlay: Above Regional % Average of Youth Age 0 - 17





# Regional Equity Atlas

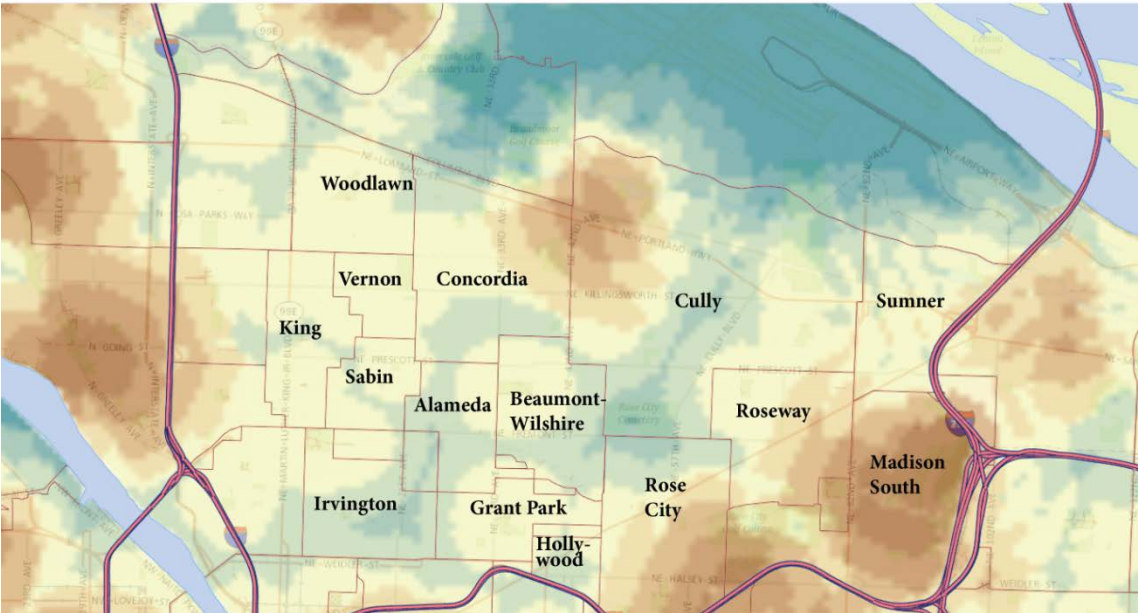
The Portland Metro Region's Geography of Opportunity

## Health Department

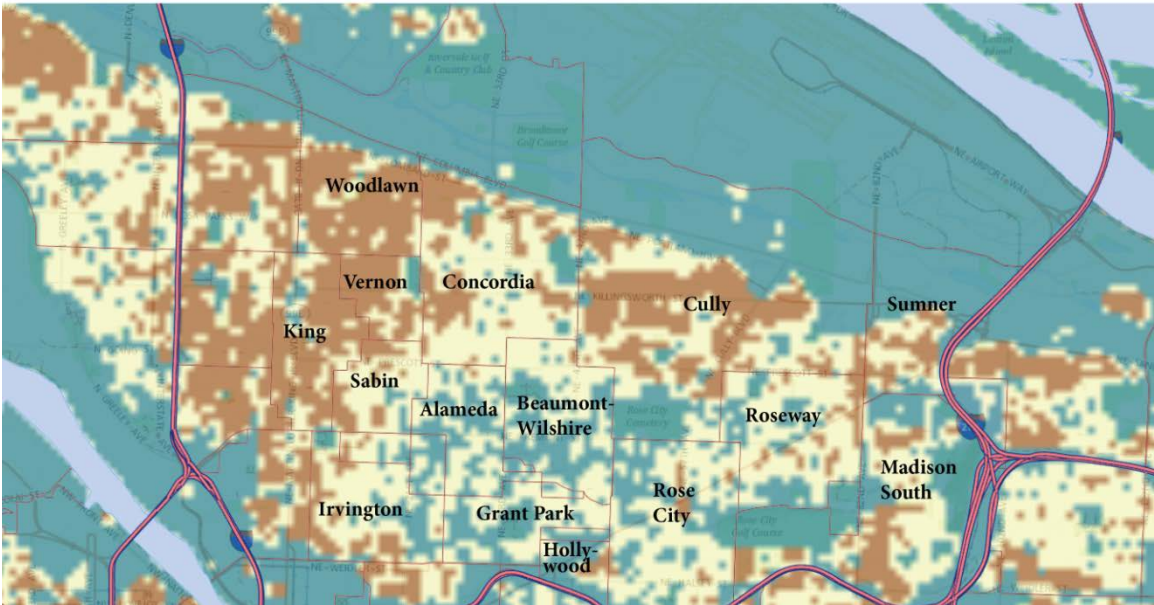
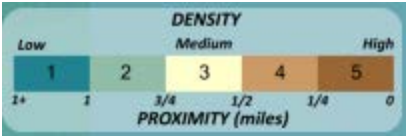


107 SE Washington St, Suite 239, Portland, OR 97214  
(503) 294-2889 [www.clfuture.org](http://www.clfuture.org)

Access to Parks and Open Space

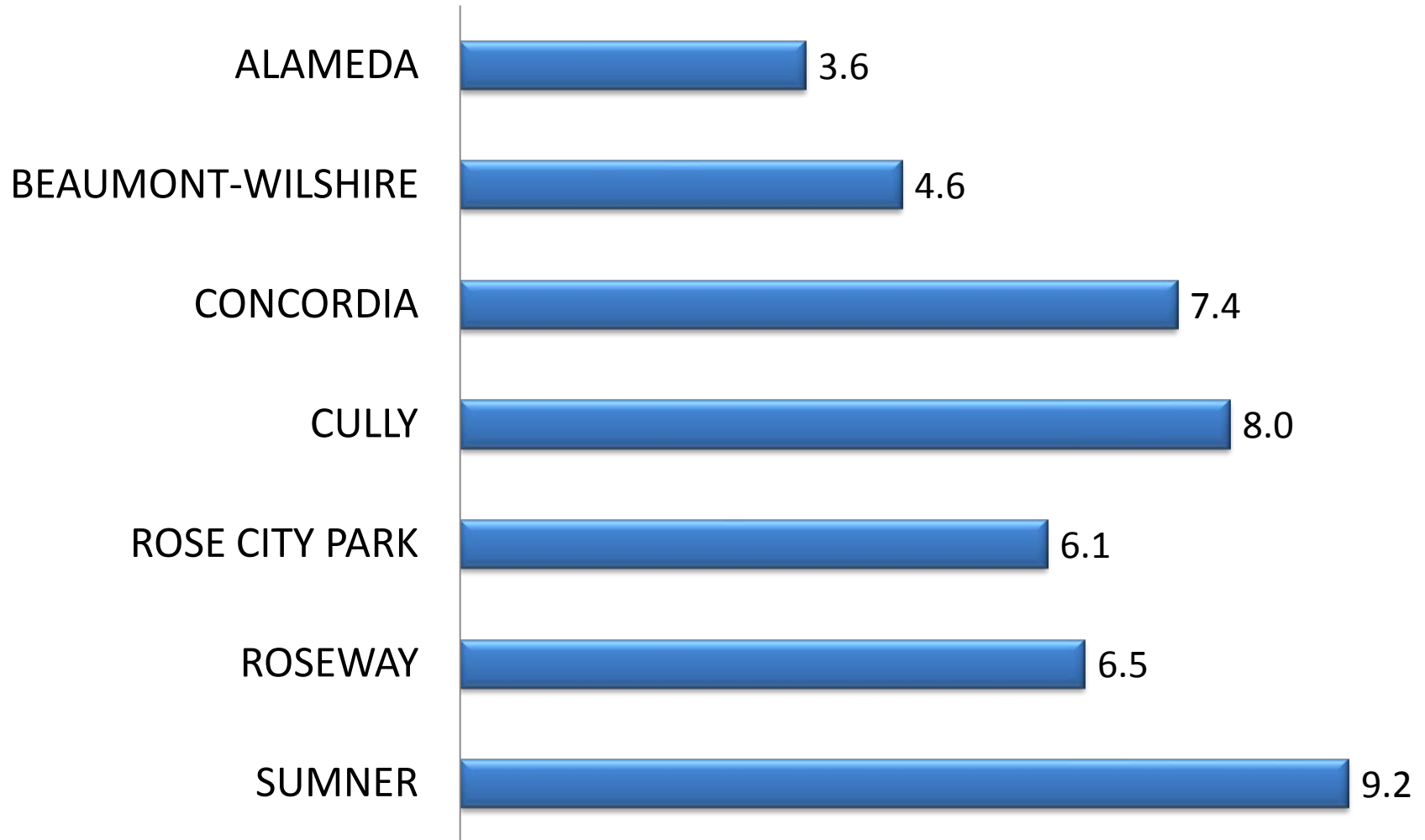


Populations of Color (Density per Acre)



# Adult Diabetes Rate

## by Neighborhood







# Mapping Tool Demo

[www.equityatlas.org](http://www.equityatlas.org)

