

# The Gateway Center for Domestic Violence Services

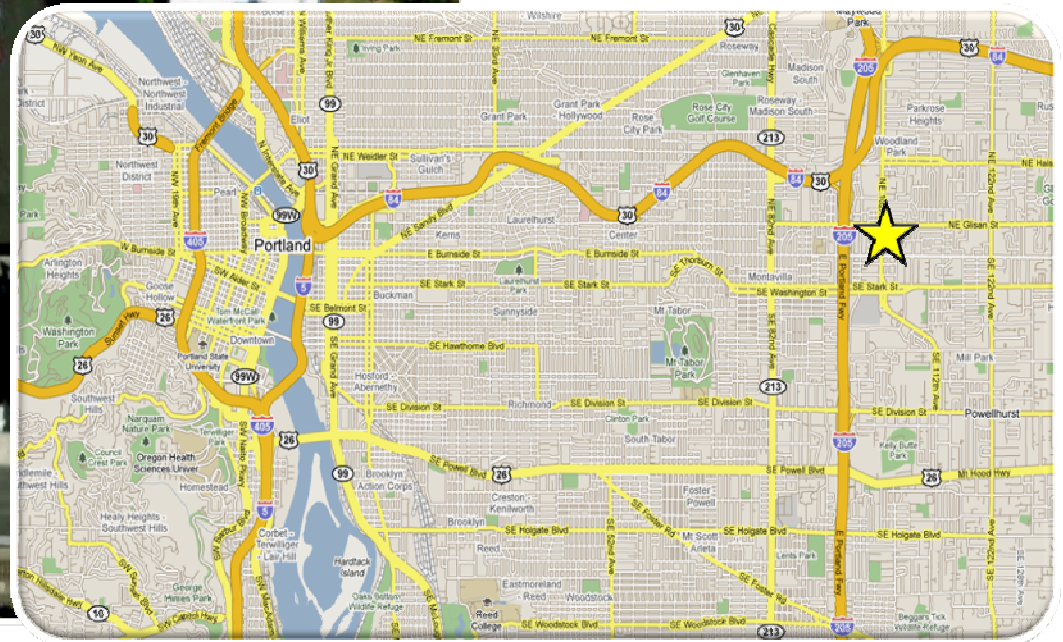
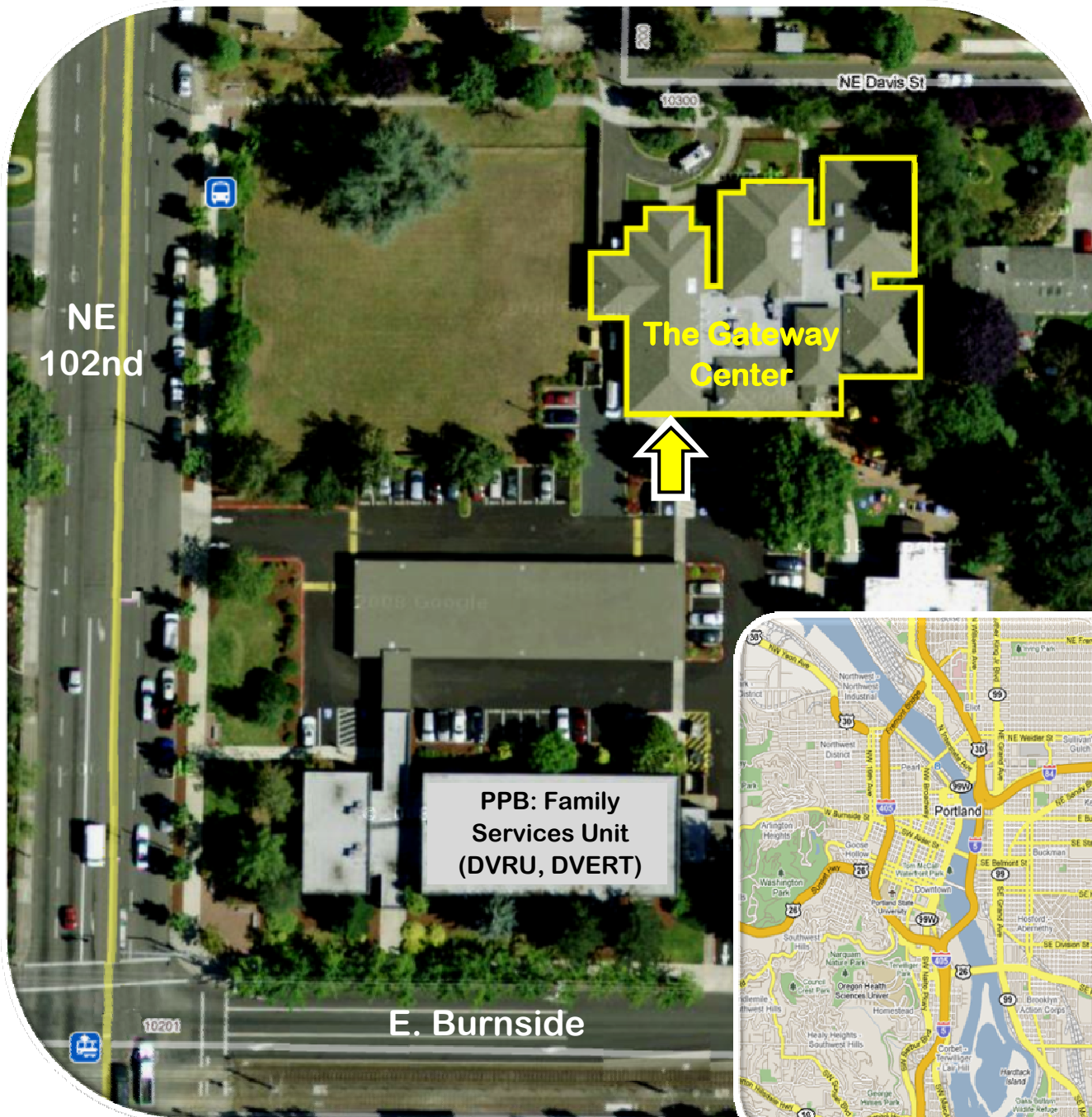
10305 NE Burnside, Portland OR 97216

presentation to



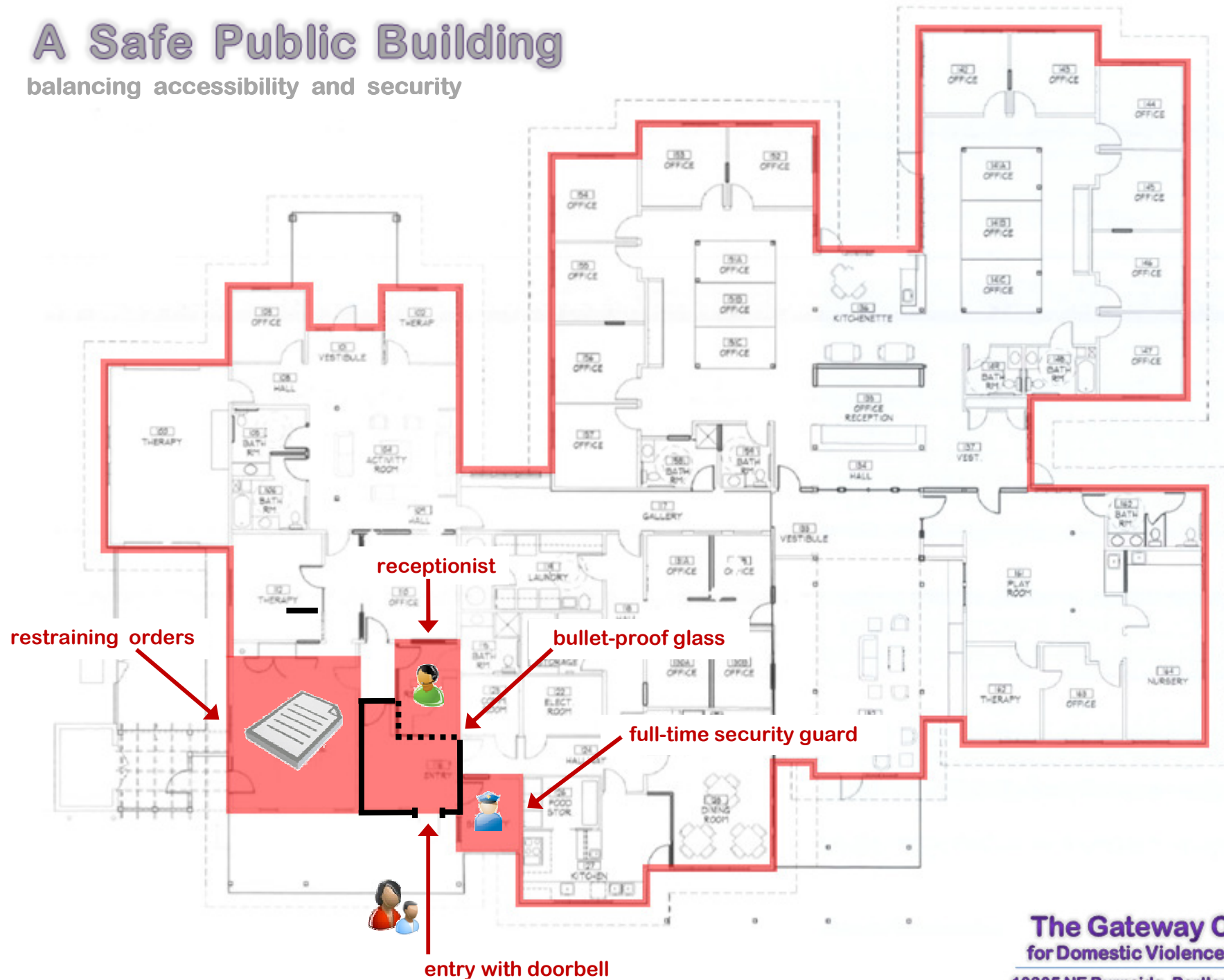
October 6, 2009

**Martha Strawn Morris**  
Executive Director



# A Safe Public Building

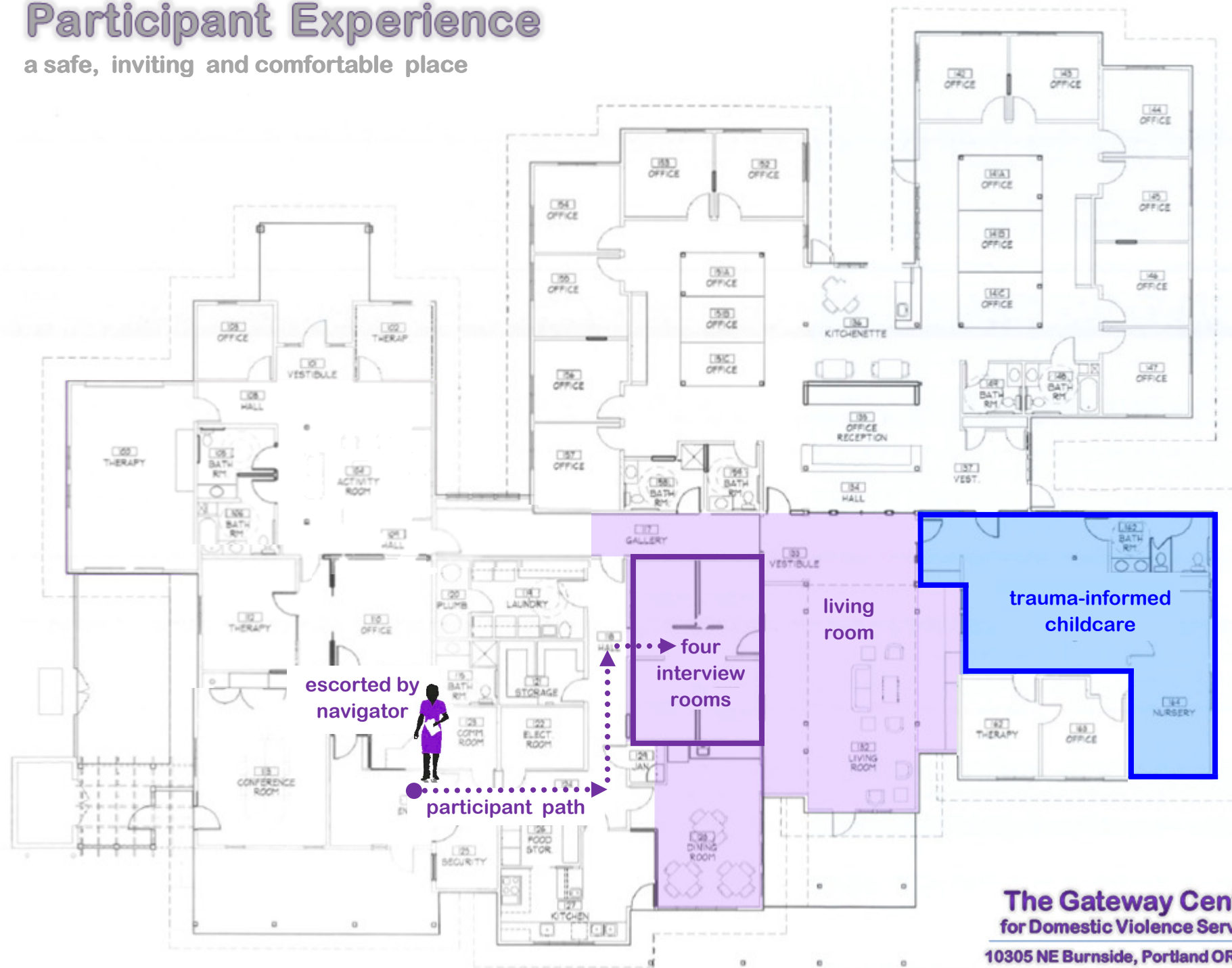
balancing accessibility and security





# Participant Experience

a safe, inviting and comfortable place

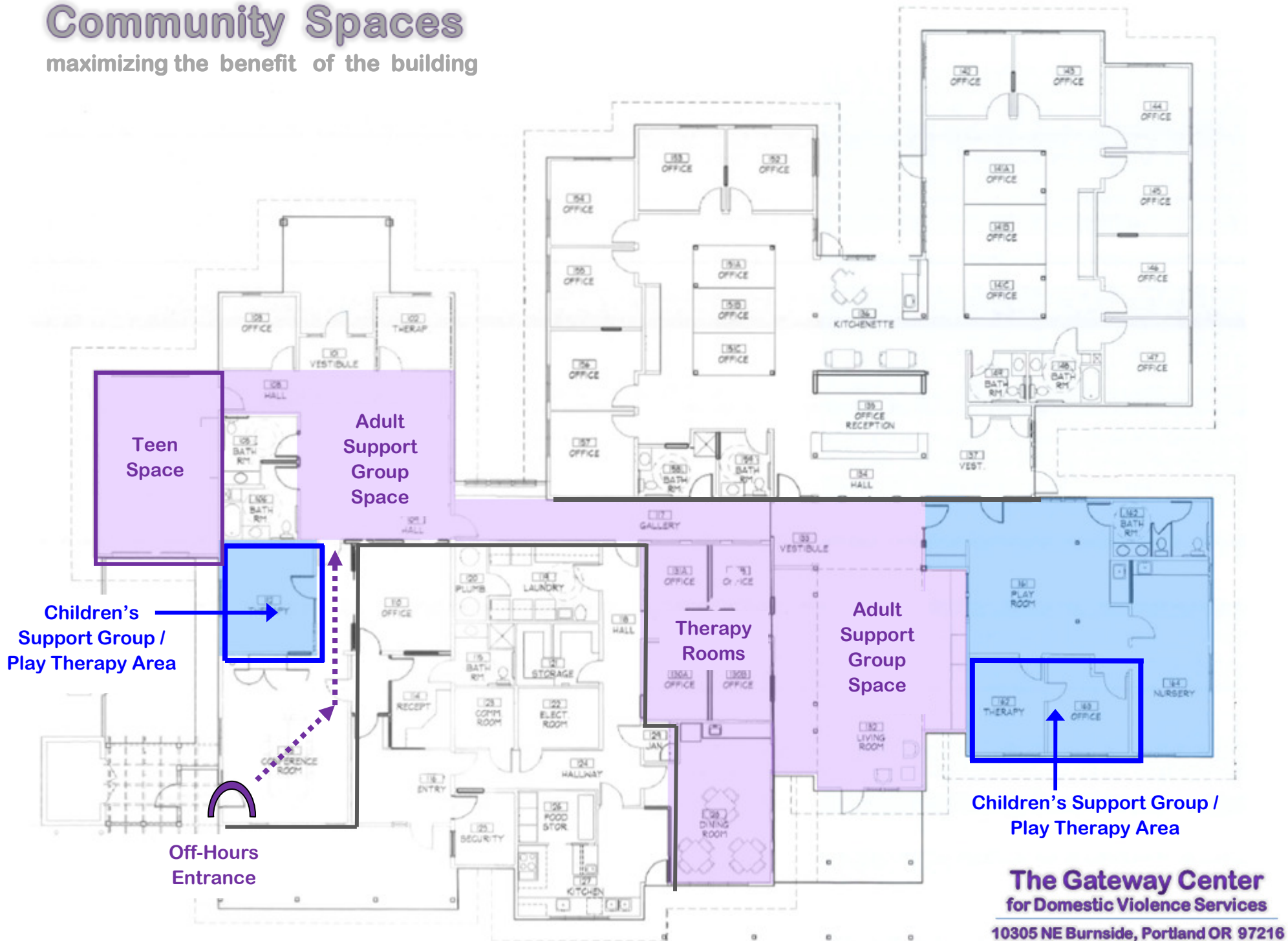


## co-location improves efficiency and accountability for all



# Community Spaces

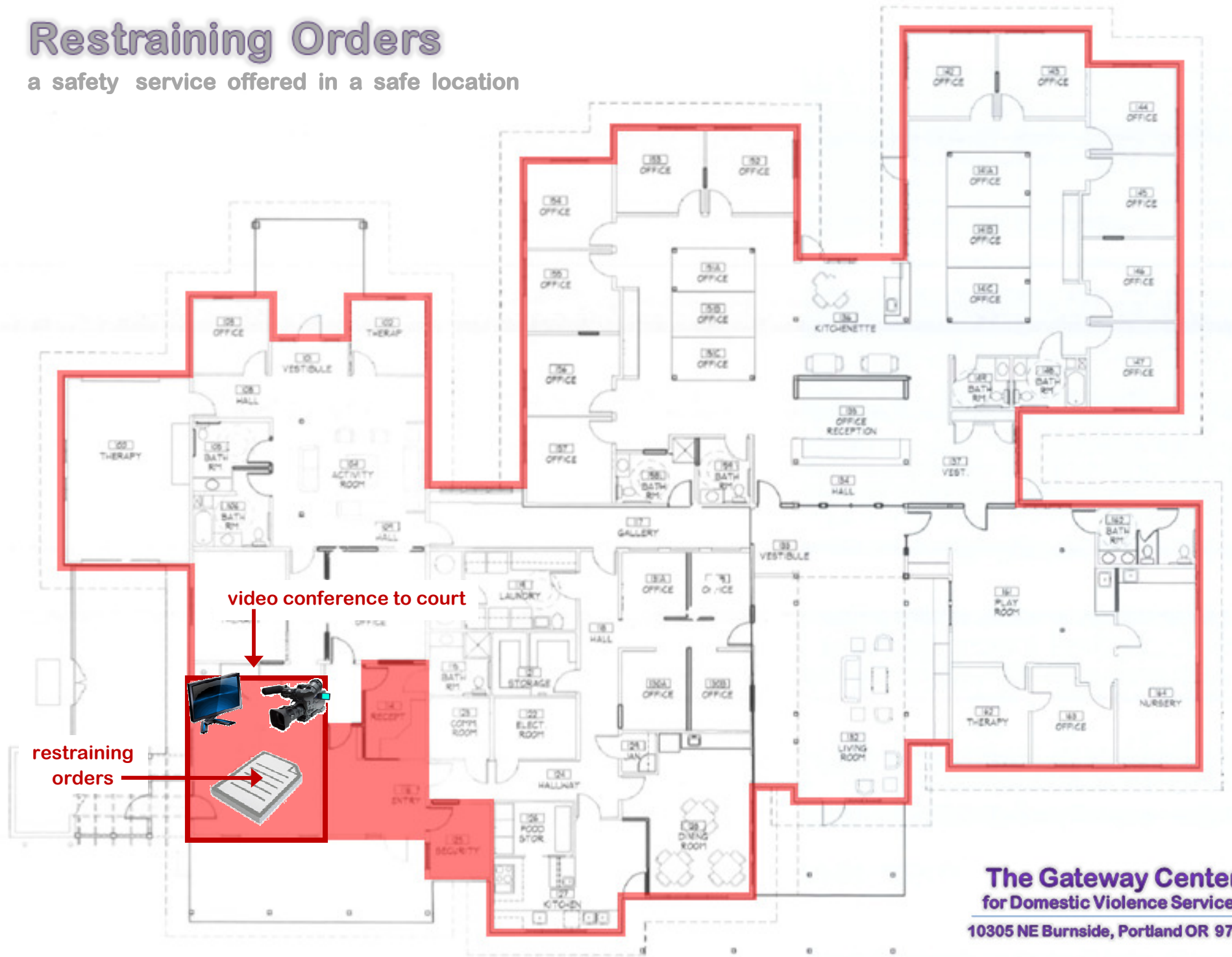
maximizing the benefit of the building



**The Gateway Center**  
for Domestic Violence Services  
10305 NE Burnside, Portland OR 97216

# Restraining Orders

a safety service offered in a safe location



**The Gateway Center**  
for Domestic Violence Services

10305 NE Burnside, Portland OR 97216