

Jail Capacity Management Plan

Multnomah County Sheriff's Office

July 2017

JCMP: Why Today Matters

- The Jail Capacity Management Plan (JCMP) reflects compliance with law, budget authorization, professional public safety operation, and community expectation
- Domino-effect consequences of noncompliance impact:
 - Fiscal Responsibility (operating within authorization)
 - Legal Obligations (jail conditions)
 - Public Safety (victim notification)



JCMP: Recent [Budget] History

- *September 2016* – Reduction in funding (closure of Dorm 4); authorized capacity went from 1310 to 1251
- *November 2016* – Board approved Resolution 2016-114 to reflect change in authorized capacity and update procedures (early warning notification)
- *December 2016* – Board authorized funding to keep Dorm 5 open through July 2017
- *July 2017* – Reduction in funding (closure of Dorm 5); authorized capacity went from 1251 to 1192 (MCDC:448, MCIJ:744)

JCMP: Early Warning Notice

- If the number of adults in custody housed within a County facility exceeds 90% of the population limit *and* the Sheriff believes the population will remain at or above that threshold for more than 24 hours, MCSO provides an early warning notice
- Notice will be sent to MCSO personnel, criminal justice system partners, County officials, asking for review of jail bed usage and considerations of appropriate alternatives
- July 3rd: Early Warning notice issued; status maintained



JCMP: Emergency Population Notice

- If number of adults in custody within a County facility reaches 95% of the population limit, MCSO provides emergency population notice
- Notice will be sent to MCSO personnel, criminal justice system partners, County officials, directing immediate use of alternatives to jail; notice will also be sent announcing the return to normal operational levels
- July:
 - 10th: Emergency population notice issued
 - 11th: Emergency population notice rescinded
 - MCSO remained in Early Warning status
 - 17th: Emergency population notice issued



JCMP: Emergency Population Procedure

- Upon issuing notice, MCSO develops a prioritized list of adults in custody based on a variety of scoring criteria, in anticipation of a coordinated release:
 - Risk to self or others,
 - Criminal charges,
 - Prior criminal justice system history (failure to appear, probation conditions),
 - Classification assessment (medical)



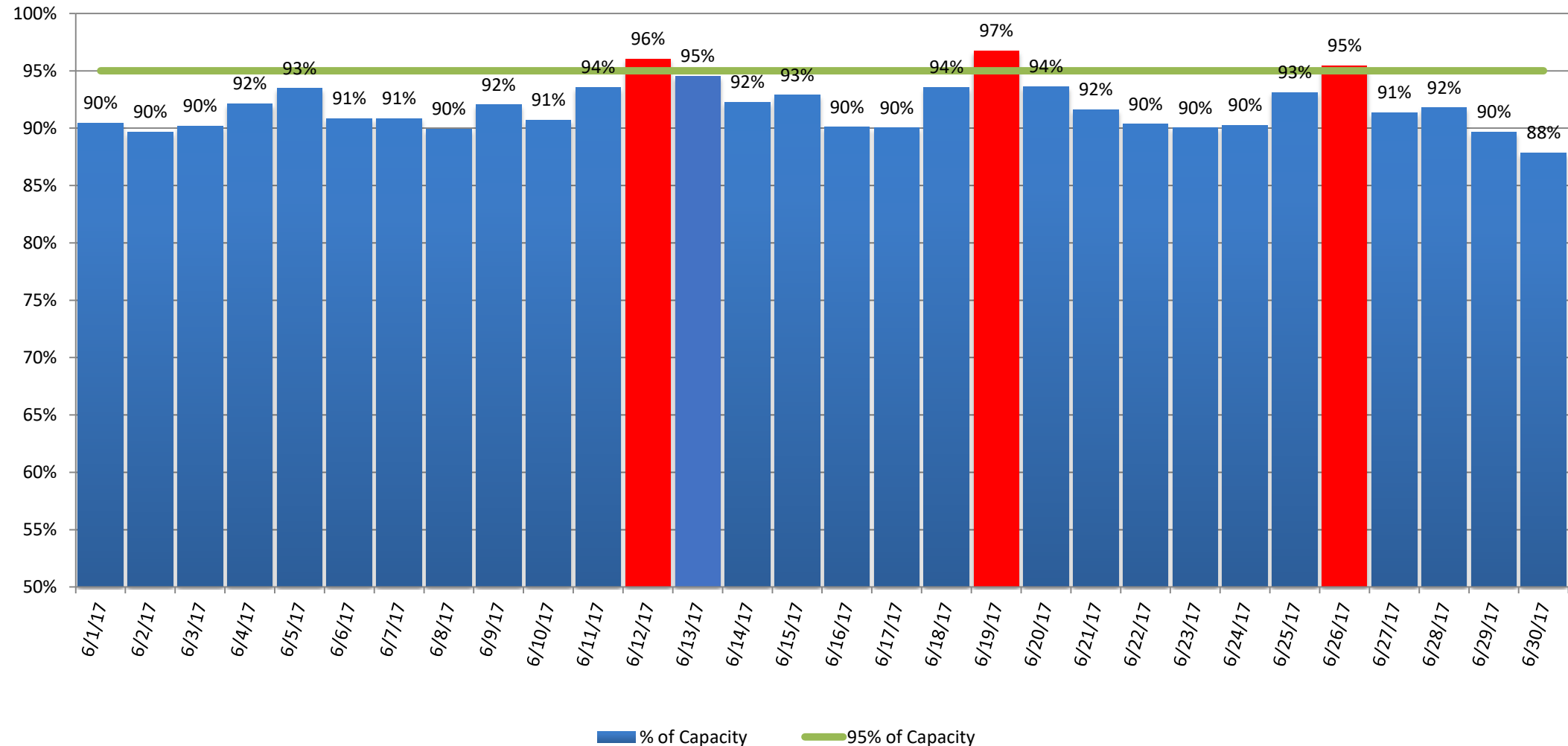
JCMP: Recent Population Trends

- Standard Bookings:
 - As standard bookings go up, daily jail population goes up
 - PPB represents the majority of standard bookings
 - Other variables: DA charges, Court docket, and DCJ sanctions
- June: Retroactively applying a funded capacity of 1192
 - Early Warning (90% capacity): All but one day
 - Emergency Population (95% capacity): 3 days
- July: Managing a funded capacity of 1192
 - Early Warning (90% capacity): All but one day
 - Emergency Population (95% capacity): 2 days



Percentage of Jail Capacity Filled, June 2017

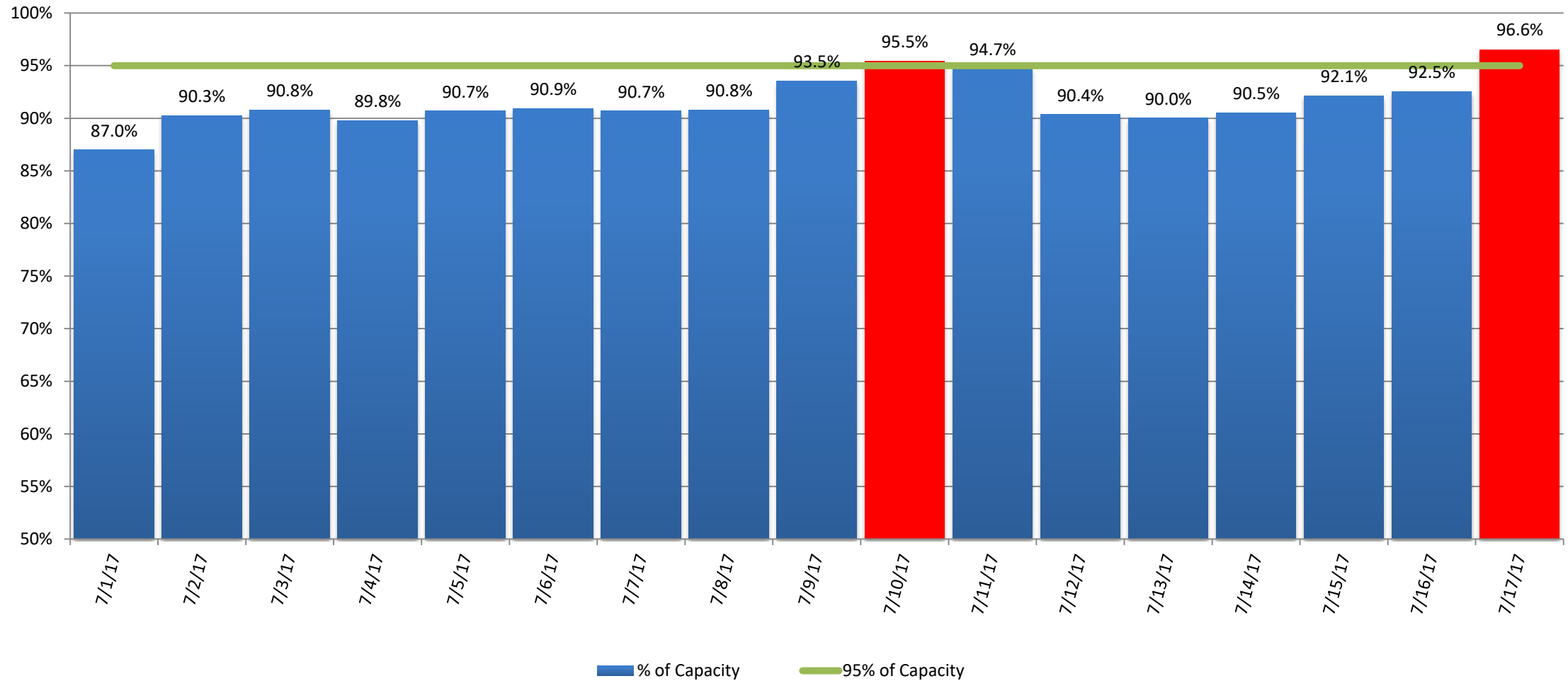
Based on new funded capacity of 1,192



Red bars indicate days at or above 95% capacity threshold.

Percentage of Jail Capacity Filled, July 2017

Based on new funded capacity of 1,192



Red bars indicate days at or above 95% capacity threshold.

JCMP: August and Everything After

- Daily population has a strong positive correlation with standard bookings, with some reliable seasonal variation
- Between 2014 and 2016, average standard bookings
 - Increased by 2.2% from June to July
 - Increased by an additional 1.3% from July to August
 - Decreased by 6.8% from August to September
- Given historical trends and holding other factors constant, average daily population is expected to hold or slightly increase for the remainder of July and August

JCMP: MCSO Respectful Requests

- Today:
 - Recognize Early Warning/Emergency Population as the new normal
 - Approve the Resolution and the Jail Capacity Management Plan
 - Ensures compliance with the law and budget authorization
- Future:
 - Continually consider data regarding jail population
 - Communicate with MCSO through early warning notification
 - Work with MCSO to manage emergency population status

