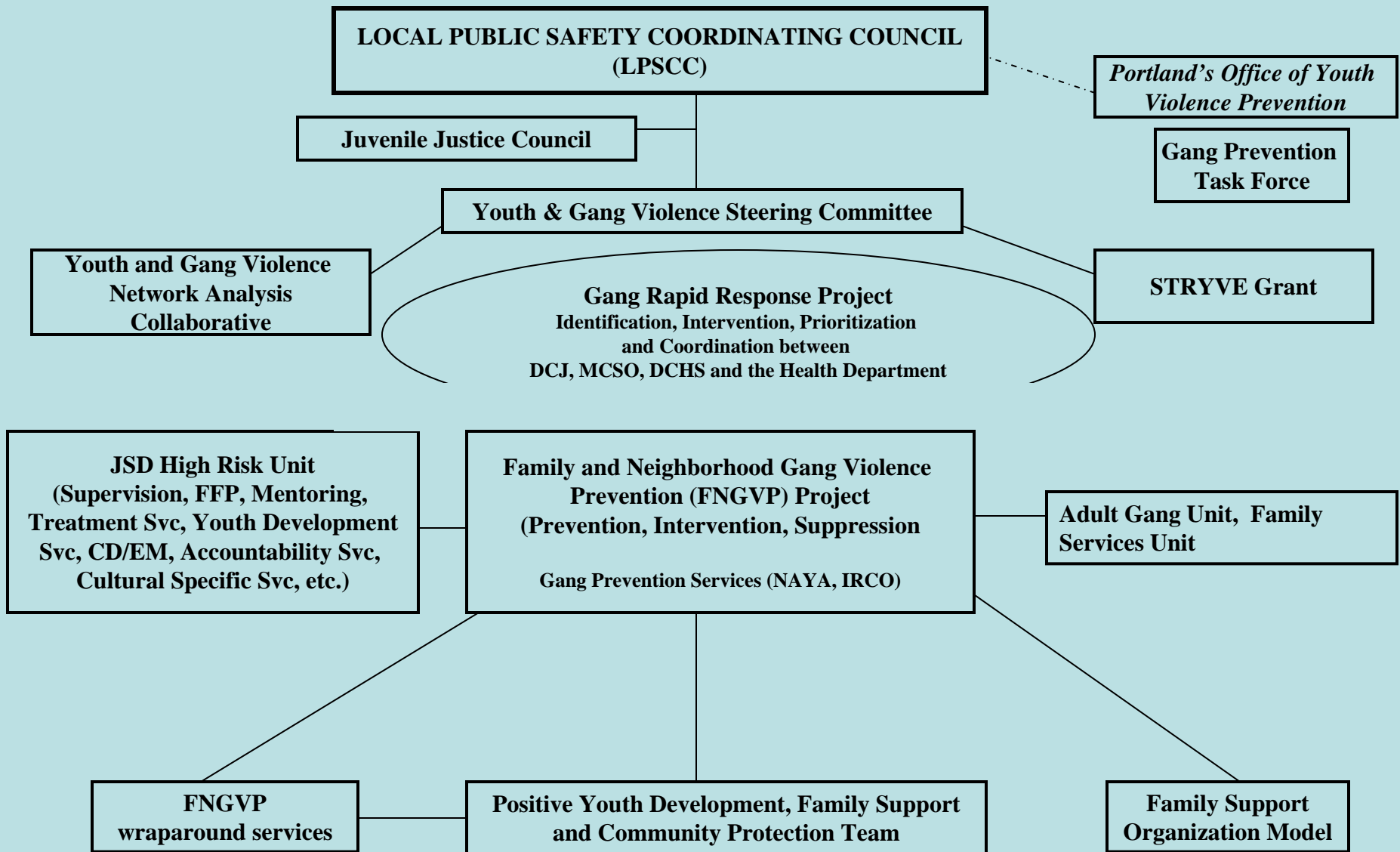


Multnomah County's Comprehensive and Collaborative Approach to Reducing Gang violence

Rapid Response

October 4, 2011



A COMPREHENSIVE AND COORDINATED RESPONSE TO YOUTH AND GANG VIOLENCE

Goal

- **Goal: Reduce gang violence through *suppression* efforts but then remain engaged with the communities as we move toward *intervention, prevention and re-entry* efforts by providing opportunities for communication and strengthening collaboration between county departments, criminal justice and community partners.**

Partners Involved:

- **County Partners: Multnomah County Health Department, Department of Community Justice, Department of Community and Human Services, Multnomah County Sheriff Office**
- **External Partners: City of Portland Police Bureau, OYA**



Identify High Risk Gang Members

- **Identify youth and adults actively involved in gang violence on DCJ caseloads and those frequenting the jails and detention to identify risk, service needs and prioritize for services.**

Engage those identified to be prioritized for services.

- **One on ones**
- **Community meetings**
- **Detention**
- **Jail**
- ***Community and criminal justice partners.***



Progress to Date

- **Logic Model developed and facilitated by DCJ Research and Evaluation.**
- **Service Providers within Health Dept, DCHS and MCSO have collaborated to share information about gang issues impacting the community**
- **Engagement process defined.**
- **The Family Neighborhood Prevention Project is piloting high risk youth and adults .**
- **County Services have been initiated for individuals impacted by gang involvement and violence**



Next Steps

- Engage individuals and families, impacted by gang violence in services offered by the county
- Engage other county initiatives that intersect with gang members such as Human Trafficking, Domestic Violence
- Plan and develop the Family Neighborhood Gang Violence Prevention Project maintaining flexibility to serve both juveniles and adults and their families impacted by gang involvement and violence
- Research technological resources for Network Analysis- Continue to seek ways to engage community members to change the norms related to violence in their communities
- Provide opportunities to educate the community about services available to them
- Examine the gaps and resources needs to continue to address gang violence in the community.

Solutions that would allow us to continue building on ongoing efforts to address gang violence

- **Purchasing of software to assist in network analysis to better understand criminal networks in the community, and creation of a position to provide analysis of this data and to help build the system.**
- **Developing culturally-specific Knowledge, Skills and Abilities requirements for Juvenile Court Counselors who work with Latino and African American Youth and their families.**
- **Additional JCCs and PPOs to assist with suppression, intervention, prevention and re-entry efforts.**
- **Crafting a specific message that articulates Multnomah County's response to Gang Violence**
- **Hiring a coordinator to enhance collaboration and coordination of system partners.**
- **Increase of Community Health Workers/ Community Health nurses who specialize in working with families affected by gang violence.**
- **Funding to hire a consultant that will assist in enhancing cultural responsiveness to families and individuals affected by gang violence**
- **Clinical support for staff affected by secondary trauma from working with individuals affected by violence and trauma to increase their effectiveness and to avoid burnout as well as health problems.**
- **Overtime to cover costs for JCCs and PPOs to continue to acknowledge their missions do not stop at 5 pm or on a Friday and to let them do necessary work on weekends and evenings.**

Crosswalk of Positive Life Domains, FFP, LaTessa, Kennedy Along the Prevention - Intervention - Suppression Continuum

<div> <div>←</div> <div>Prevention</div> <div>Intervention</div> <div>Suppression</div> <div>→</div> </div>			
Positive Life Domains	Functional Family Probation	LaTessa Risk Factors	David Kennedy
Community	Peers & Other Relationships	Anti-social companions	Moral/authoritative voice
Home	Family Functioning	Family and/or marital dysfunction	Moral/authoritative voice
Health/Wellness	Substance Use, Mental Health	Substance abuse and untreated mental health issues	Community Norms
Education/Employment	School	Poor or non-existent school and/or work involvement	Moral/authoritative voice Community Norms
Positive Youth/Human Behavior Development	Behavior Issues	Anti-social personality, lack of leisure and/or recreational activities	Moral/authoritative voice
Spirituality	Attitudes, Values & Beliefs	Anti-social cognition	Moral/authoritative voice

Theory of Change for Gang Violence Prevention

