



# **Neighborhood Prosperity Initiative Multnomah County Commission July 12, 2012**

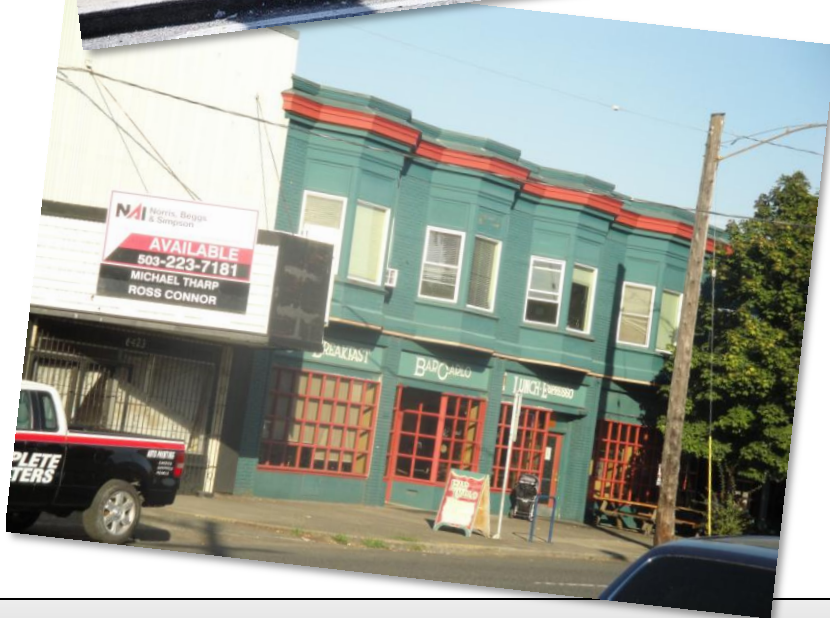
# Policy Context



## Neighborhood Economic Development



# NED Accomplishments: Year 1



- ✓ Established NED Leadership Group
- ✓ Continued Portland Main Street Program
- ✓ Created Small Business Technical Assistance Program
- ✓ Released New Microenterprise Development RFP
- ✓ Aligned existing PDC Programs with NED Strategy
- ✓ Established CBA with SoloPower
- ✓ Partnered with Craft3 to make \$1.5M in working capital available
- ✓ Launched Neighborhood Prosperity Initiative

# Neighborhood Prosperity Initiative (NPI)

## Community Driven, Community Implemented:

- Builds on Main Street model
- “On the ground” district staff
- PDC in dual role as grant administrator & partner
- TIR is one of a number of important tools



# NPI Districts: Expected Outcomes

Within each Commercial Corridor:

- Net business growth
- Higher tenancy rates
- Job growth
- Stronger business districts

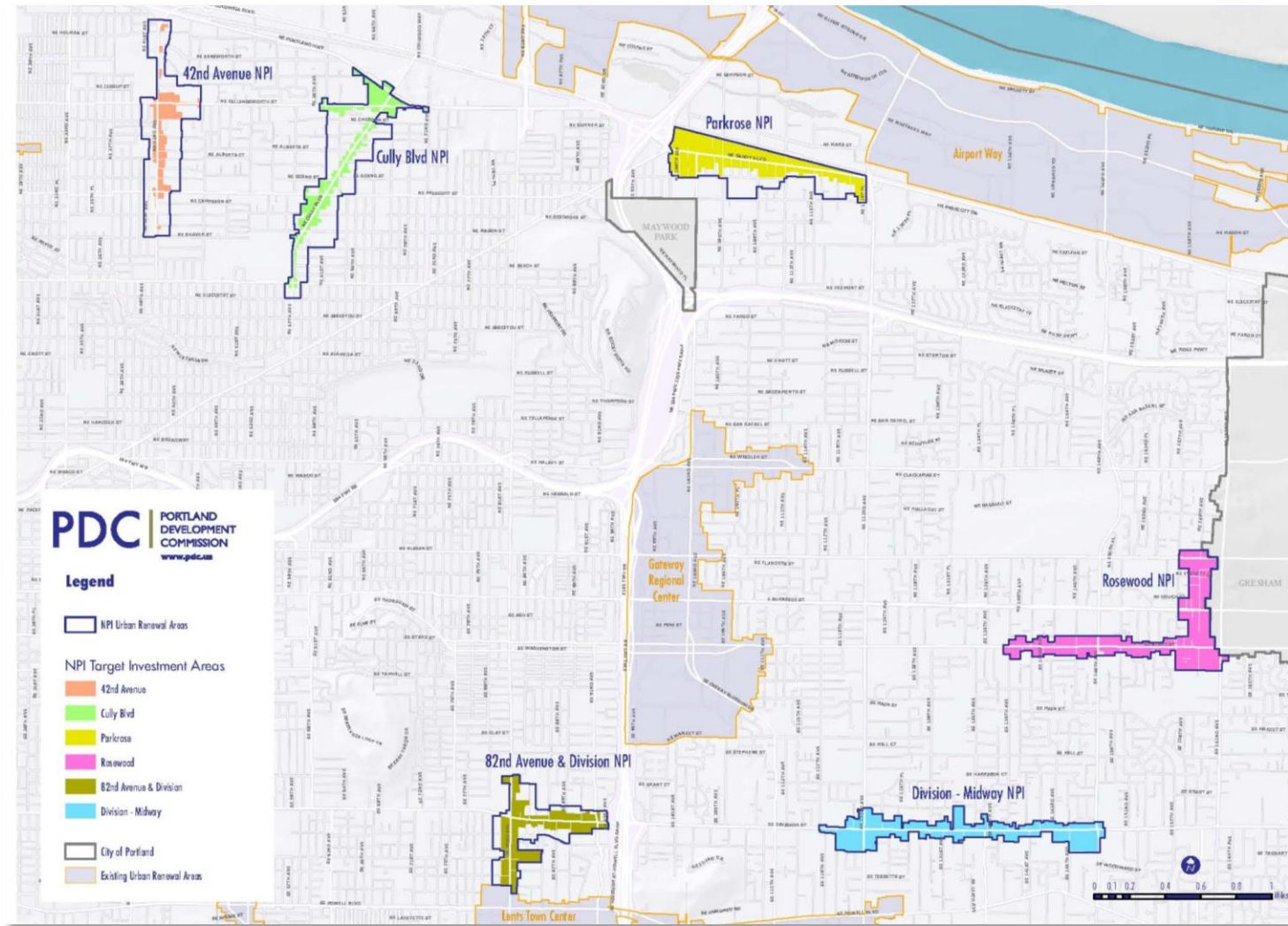




# NPI Districts

## Selection Criteria:

- Outside existing URAs
- Within “Priority Neighborhoods”
- Concentration of minority-owned and/or serving businesses
- Concentration of locally-owned businesses
- Business/community organization capacity
- Commercial zoning/use



# Community Process & Timeline

NPI  
Kickoff  
Event –  
Nov. 2011

Letter of  
Interest –  
Jan. 2012

PDC  
Board and  
PSC –  
March 2012

Outreach and  
Community  
Organizing  
Grants –  
Dec. 2011

District  
Vision  
and  
Goals –  
Feb.  
2012



# Community Process & Timeline

NPI  
Kickoff  
Event –  
Nov. 2011

Letter of  
Interest –  
Jan. 2012

PDC  
Board and  
PSC –  
March 2012

Org. Training  
&  
Development  
Spring 2012

Outreach and  
Community  
Organizing  
Grants –  
Dec. 2011

District  
Vision  
and  
Goals –  
Feb.  
2012

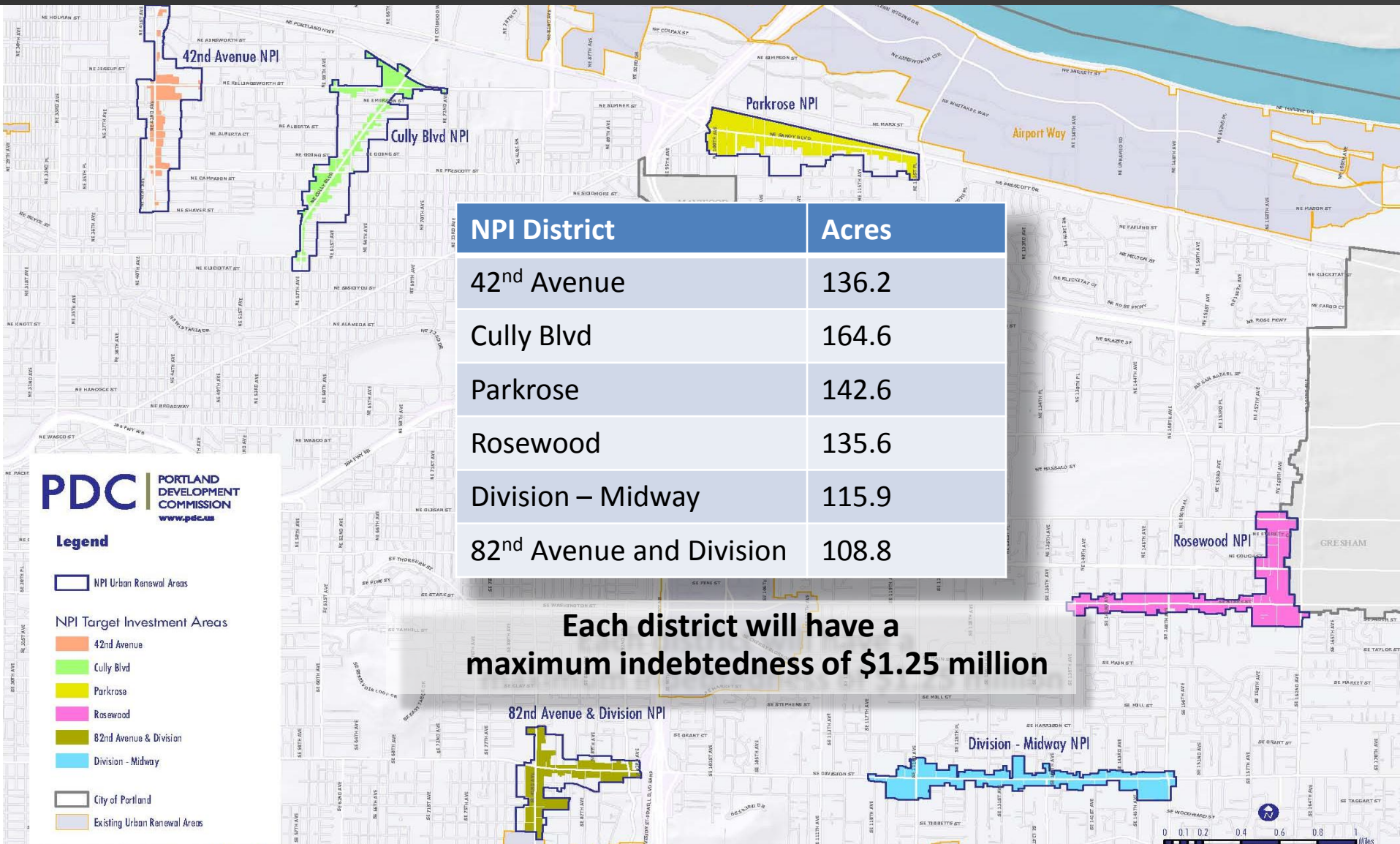
Portland  
City  
Council –  
April 2012

District  
Start up  
–  
July 2012

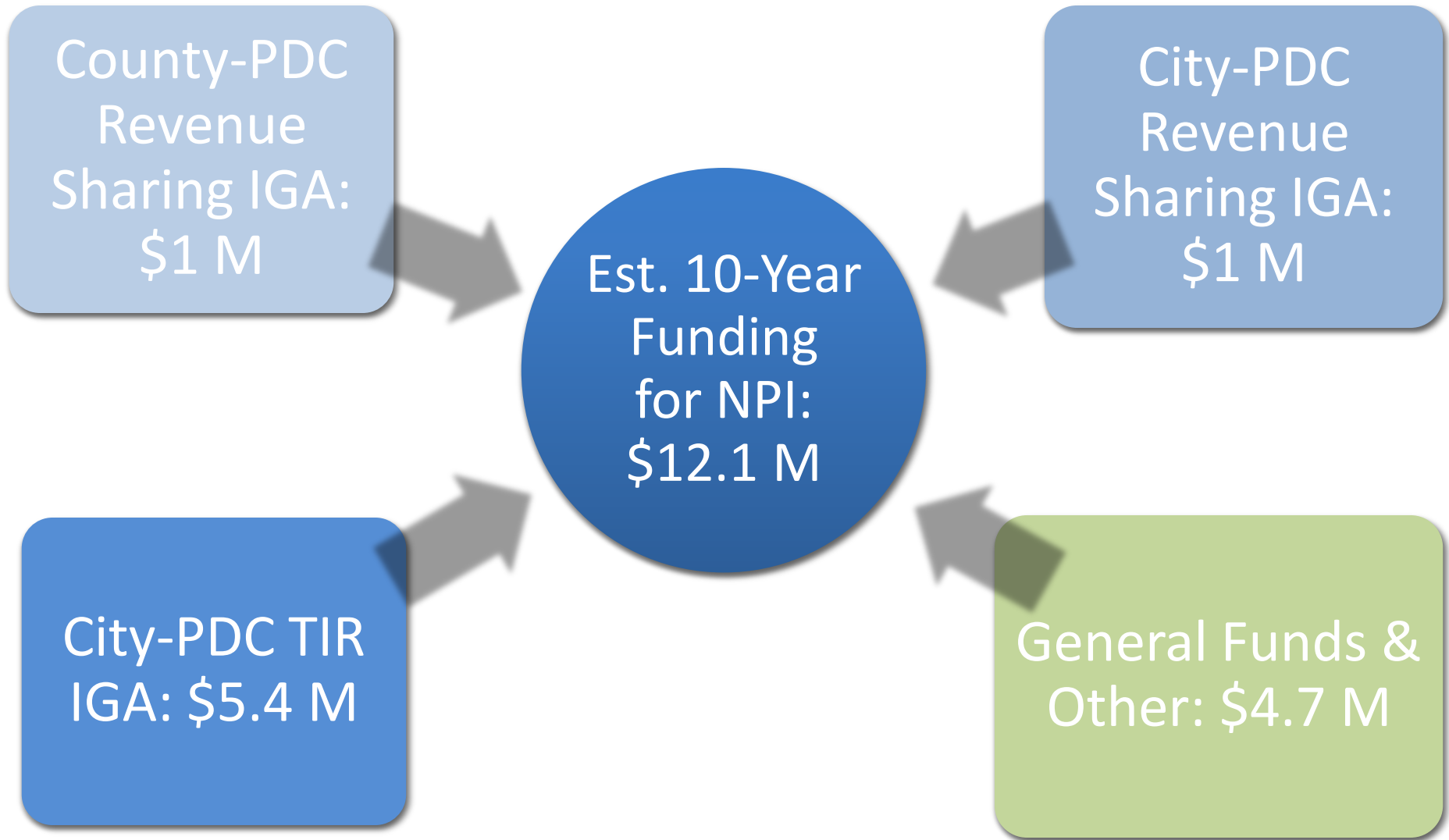




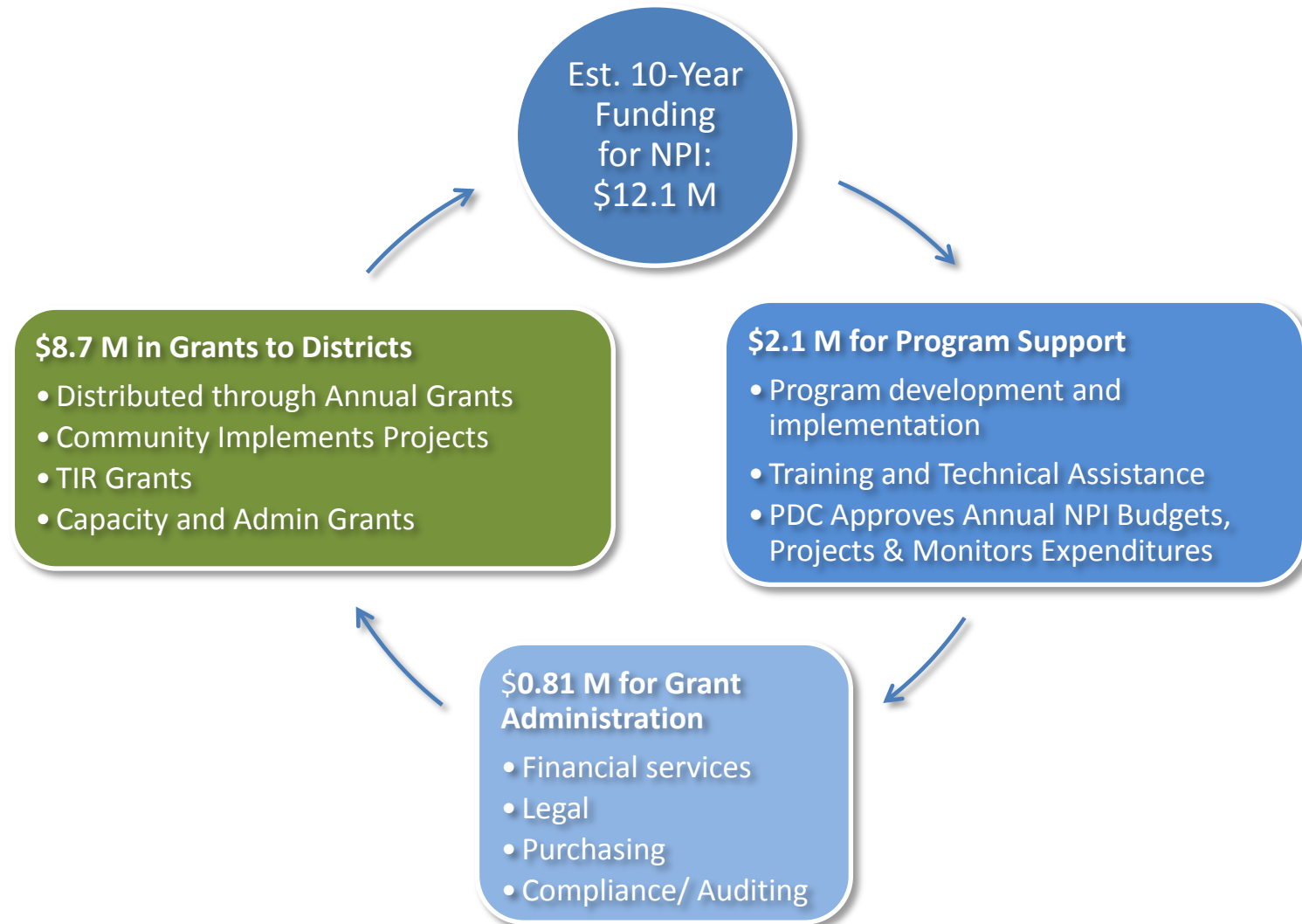
# NPI Urban Renewal Areas



# Revenue Sources & Agreements



# Expenditure, Roles & Annual Process





# NPI Partners

42<sup>nd</sup> Ave. \* Cully Blvd. \* 82<sup>nd</sup> and Division \* Rosewood \* Division – Midway \* Parkrose

**HISPANIC CHAMBER of  
COMMERCE  
IRCO  
NAYA  
PCC SBDC  
SMALL BUSINESS LEGAL  
CLINIC**

## PRIVATE SECTOR SPONSORS



## Neighborhood Economic Development