



Transportation Division Update

Board of County Commissioners

April 10, 2018

Department of
Community Services

Who are we?

What do we do?

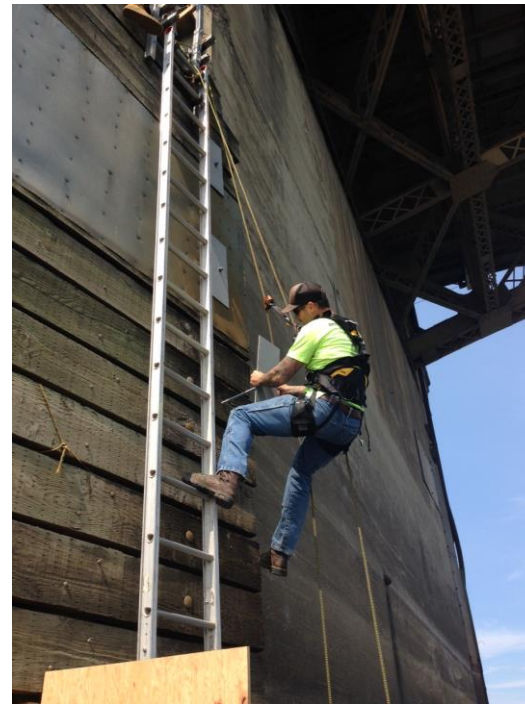
***How do we do our
work?***

What's next?



We are:

Engineers
Maintenance
Bridge
Operators
Surveyors
Planners
Inspectors
Water Quality



We Maintain:

- 300 miles of roads & 27 bridges, including 6 Willamette River Bridges
- 2000 Public Land Corners
- 8000 signs
- 1500 culverts
- 3300 light poles

And

- Issue over 700 permits/year



Policy - Projects - Access

Plan

Outreach

**Secure
Funding**

Design

Build

Maintain

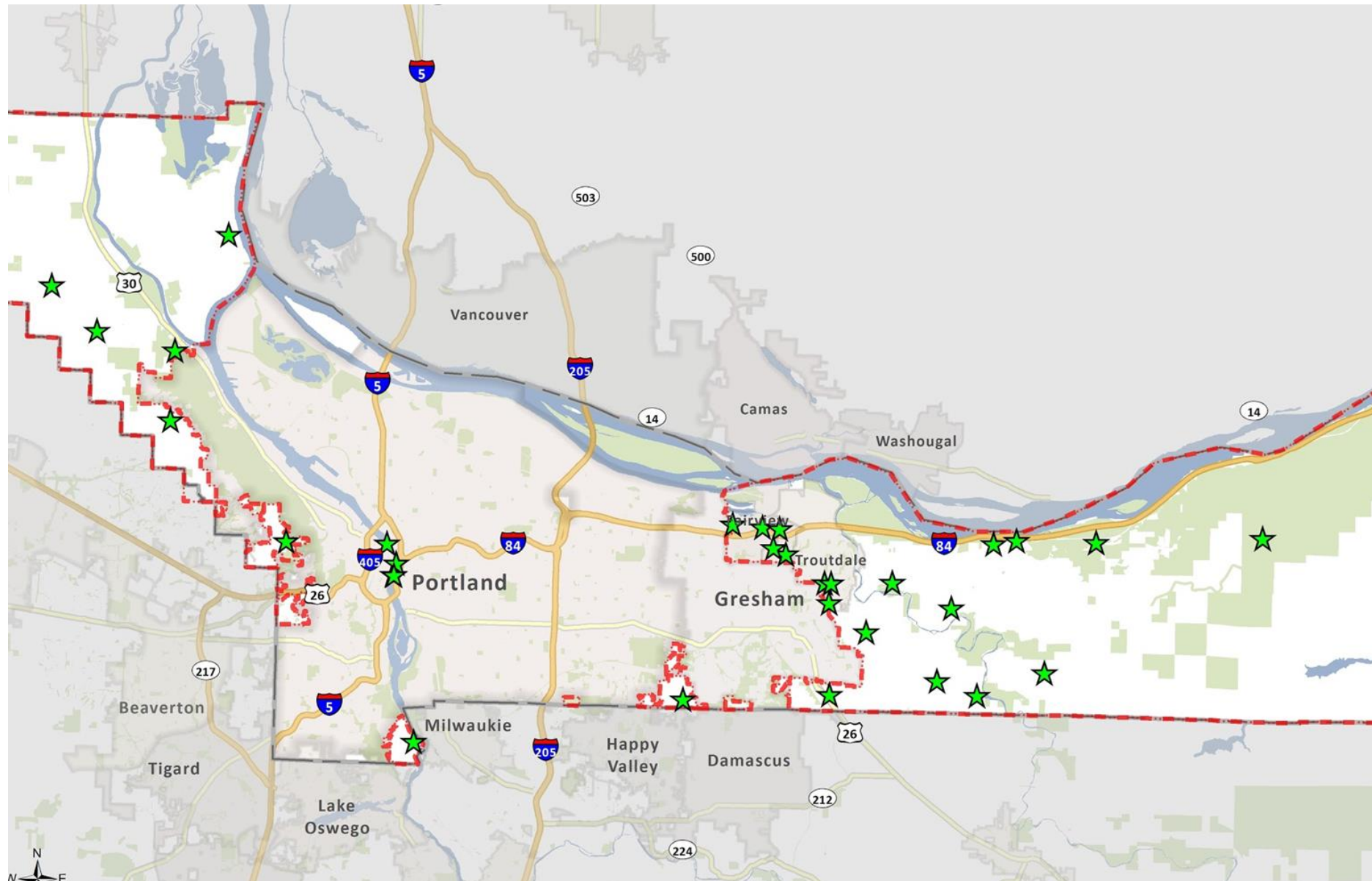
Sustainability

Equity

Partnership

Stewardship

Transportation Division // Current Projects



Planning/Pre-design

- Larch Mountain Road
- Morrison Bridge Paint
- Stark Street - 257th to Troutdale Road
- Latourell Road Bridge Replacement
- Earthquake Ready Burnside Bridge
- Roads Capital Improvement Plan Revision

Design/Right of Way

- Historic Columbia River Highway Accessibility Improvements
- Germantown Road Culvert Replacement
- Lusted Road Culvert Replacement
- Chip Seals (Various Locations)
- Newberry Road Slide Repair
- 223rd Drainage Mitigation
- Asphalt Overlays (Various Locations)

Design/Right of Way (continued)

- Cochran Road Culvert/Bridge
- Cornelius Pass Road Improvements
- 267th Culvert Replacement
- 238th Between Glisan and Halsey

Construction

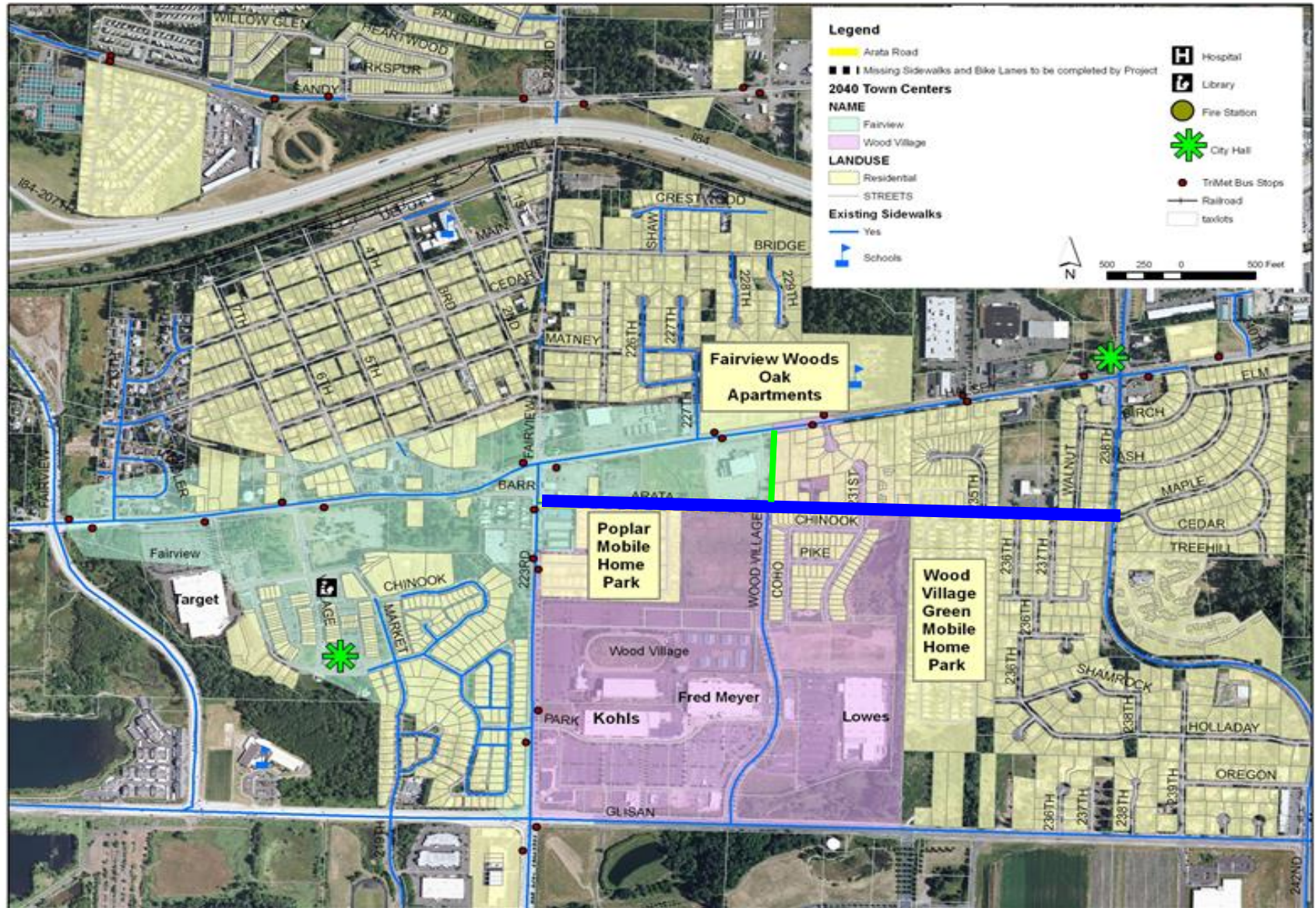
- ★ Broadway Bridge Rall Wheel
 - Sandy Boulevard
- ★ Arata Road

Recently Completed

- Stark Street Beaver Creek Culvert
- Morrison Bridge Deck Replacement
- School Flashers on Foster Road
- Woodward Road Culvert Replacement
- Military Road Culvert Replacement
- Road Rules Adoption



Transportation Division// Arata Road

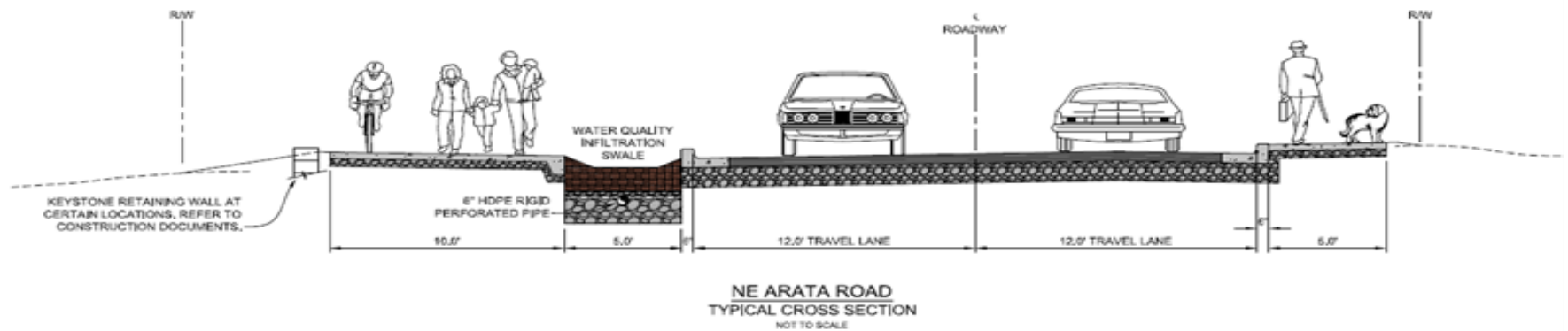


Transportation Division // Arata Road



Transportation Division // Arata Road





Sustainability

Provides bike and pedestrian improvements, and access to transit

Equity

*Serves low income and ethnically diverse community, and incorporates increased safety elements in design
11% DBE goal*

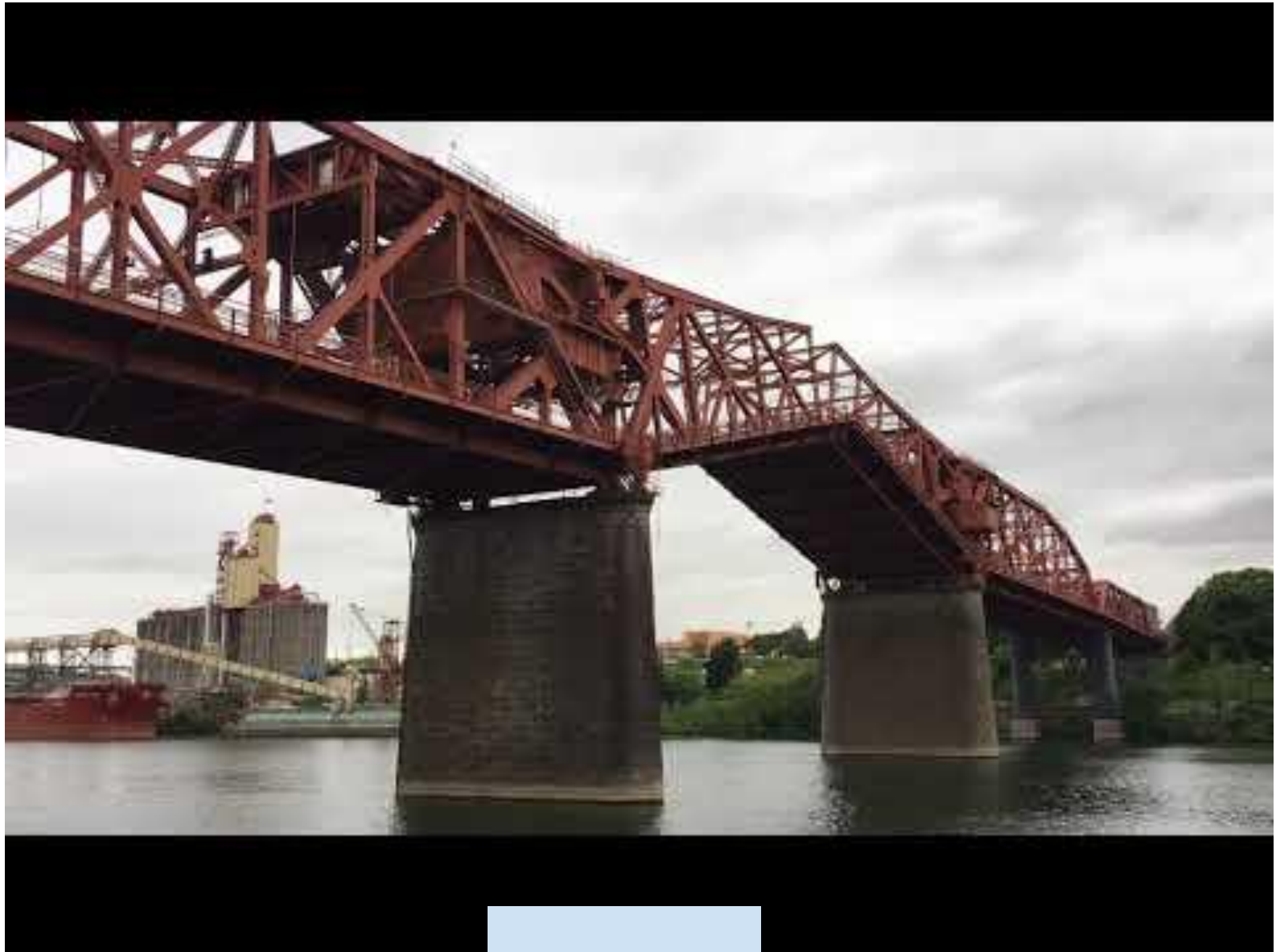
Partnership

Collaboration with East County partners to prioritize project for funding

Stewardship

Connects Wood Village Blvd Extension and NE 238 Ave Projects, Leveraged County Road Fund dollars 3:2



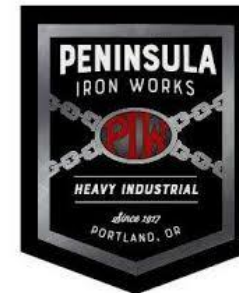


Video

Replacement



Replacement



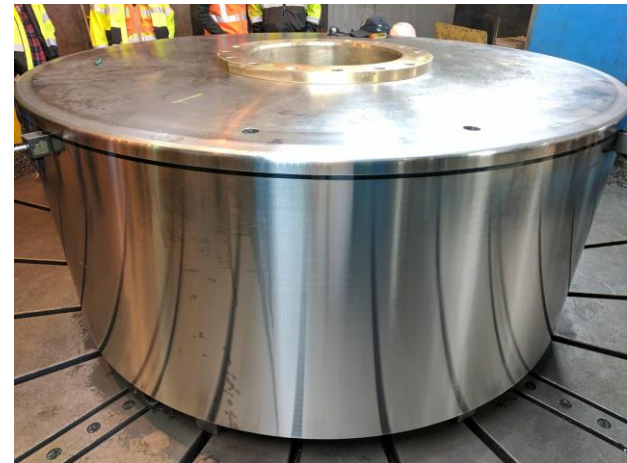
Replacement

Fabricate New Rail Wheels
and Tracks

Temporarily Support the
Movable Spans

Remove Old Rail Wheels
and Tracks

Install New Rail Wheels
and Tracks



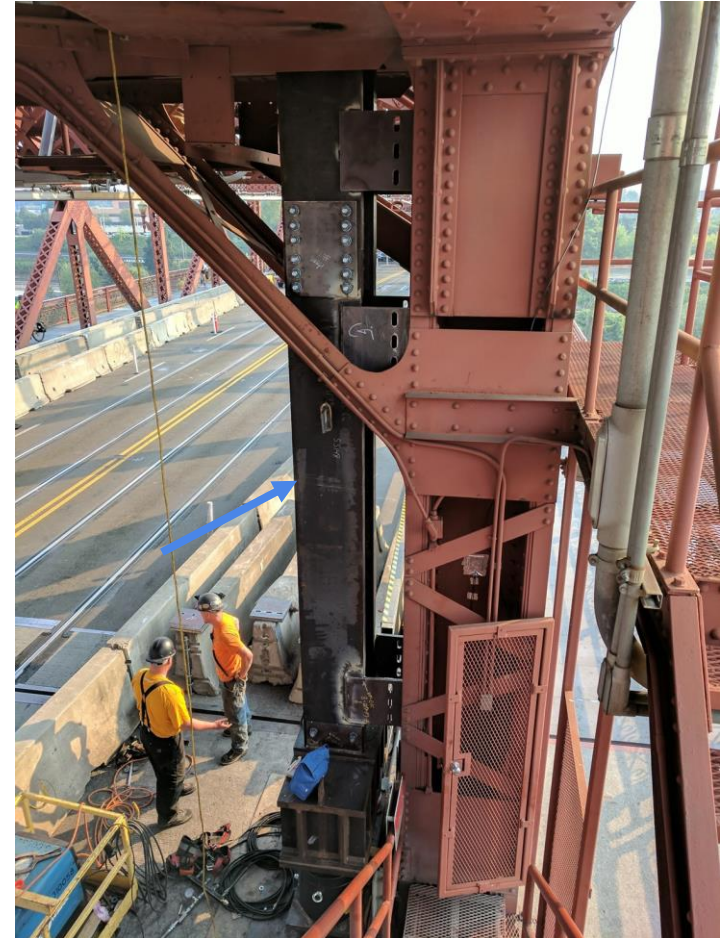
Replacement

Fabricate New Rail Wheels
and Tracks

Temporarily Support the
Movable Spans

Remove Old Rail Wheels
and Tracks

Install New Rail Wheels
and Tracks



Replacement

Fabricate New Rail Wheels
and Tracks

Temporarily Support the
Movable Spans

Remove Old Rail Wheels
and Tracks

Install New Rail Wheels
and Tracks



Replacement

Fabricate New Rail Wheels
and Tracks

Temporarily Support the
Movable Spans

Remove Old Rail Wheels
and Tracks

Install New Rail Wheels
and Tracks



Sustainability

*Extended service life of
historic 1913 bridge*

Equity

*17% DBE participation during
Design*

Partnership

CMGC Contracting method

Stewardship

*Leveraged County
Transportation Funds 9:1*

Unmet Needs



Unmet Needs

- Willamette River Bridges Capital Improvement Plan:
 - \$1.3B over 20 years
 - Seismic, capital maintenance, bike-pedestrian
 - Earthquake Ready Burnside Bridge: Design, Right-of-Way, Construction
- Roads Capital Improvement Plan:
 - \$0.5B over 20 years
 - Roadway improvements, bike-pedestrian, signals, fish passage
- Road Maintenance:
 - Pavement condition, drainage, rural areas, slides



Funding Challenges and Opportunities

- HB 2017 - a boost, but not a solution
- HB 4064 - allows funding for Earthquake Ready Burnside Bridge NEPA phase
- Federal proposal - heavily reliant on state/local funds
- Local opportunities

Who are we?

Professional
organization caring for
complex urban and rural
transportation system

What do we do?

Policy-Projects-Access

How do we do our work?

Partnership, Stewardship,
Equity, Sustainability

What's Next?

Funding Challenges
and Opportunities