



# Board of County Commissioners

Project Update  
October 6, 2015

# Agenda

- Project Dashboard
- Equity Dashboard
- Construction Update
- OR 43 Interchange
- Looking Ahead
- Public Art

# **Project Management Dashboard**

## Schedule Milestones

	Estimated Completion	Status
- Land Use Actions	Spring '15	Complete
- Long-Term Maintenance IGA	Winter '15	On-going
- Metro Agreement	Summer '15	On-going
- Macadam Bay Driveway	Fall '15	On-going
- Main Bridge Completion	Spring '16	On-going
- Replacement Trolley	Fall '16	On-going
- Overall Project completion	Fall '16	On-going

## Recent & Upcoming Meetings and Board Actions

- BCC Briefing	6/23/15
- BCC Briefing	8/25/15
- BCC Briefing	10/6/15
- BCC Briefing	12/15/15
- BCC Briefing	2/23/16
- BCC Briefing	4/19/16

## Public Involvement

Thru September, 2015

- Construction coordination with Macadam Bay residents & Freeman
- Provided ongoing traffic and construction updates
- Kept bridge neighbors informed of ongoing work
- Collaboration with senior leaders of partner agencies (ODOT/FHWA)
- Collaboration and site visit with RACC art fabrication

## December 2012 Project Funding Plan

Multnomah County VRF (Collected)	\$ 22,708,000
Multnomah County VRF (Bonded)	\$ 141,684,000
City of Portland	\$ 74,750,000
Oregon Jobs and Transportation Act	\$ 30,000,000
2012 Oregon Legislature	\$ 5,000,000
Federal funds carryover from planning	\$ 15,658,000
Federal TIGER III Act	\$ 17,700,000
<b>TOTAL</b>	<b>\$ 307,500,000*</b>

\*VRF provides adequate funds to cover anticipated County expenditures

## Stakeholder Issues

Thru September, 2015

- Traffic delays during Hwy. 43 work near Freeman Motors
- Noise review board meeting in October
- Interruptions to trail access to be addressed in 2016 with full access
- Asphalt smells addressed with neighbors during paving

## Project Expenditures (post-ROD)

Thru August, 2015

	\$ Spent	Status
<b>ROW</b>	<b>\$ 25,158,298</b>	As of Dec 2014, the total cost is anticipated to be 0%-3.25% above the original projection. (\$307,500,000 - \$317,500,000)
<b>Design/pre-con.</b>	<b>\$ 29,178,920</b>	
<b>Construction</b>	<b>\$ 209,739,091</b>	
<b>Grand Total</b>	<b>\$ 264,076,309</b>	



## Social Equity

Thru July, 2015

A&E Team (Design) Sep '12	Goal	To Date	Status
DBE	7%, (\$1.0m)	9.0%	Complete
MWESB	13%, (\$1.8m)	14.9%	Complete
CM/GC Contractor	Goal	To Date	Status
DBE (Committed)	4%	4.0%	On Target
DMWESB (Contracted)	20%	17.5%	On Target
Workforce Women	14%	12.8%	Near Target
Diversity Minority	20%	27.6%	Above Target

Note: DMWESB goals/targets published Sept 2011 from CM/GC in subcontracting plan.

## News Headlines

- [Portland's new Sellwood Bridge takes shape \(photos\) \(Oregonian\)](#)
- [Sellwood Bridge project provides job training for hundreds of apprentices \(Oregonian\)](#)
- [Sellwood project brings \\$3.6M to Portland coffers \(Business Journal\)](#)
- [Tacoma St. now veers north at Sellwood \(Sellwood Bee\)](#)
- [Project staff interviewed in OPB Unprepared seismic documentary](#)
- [Bolts slow Sellwood Bridge progress \(Sellwood Bee\)](#)

Followers  
- Weekly email updates = 739  
- Twitter account = 1273

## Sustainability

- Project sustainability tracking and documentation continues
- Reuse and recycling of onsite materials continues
- Preparations and completion of park, stream, and habitat restoration
- Greenroads Certification interim review completed
- Advancements to the Regional Trail connectivity

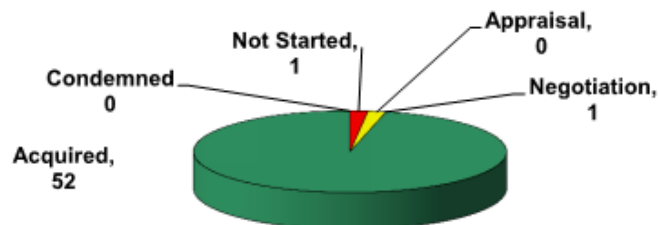
## Design Accomplishments

- Coordination with WSL Consortium on trolley replacement facilities
- Coordination with PGE, Freeman Motors, and PBOT for Macadam Bay Driveway
- Continued coordination/support for main bridge span, and surrounding facilities

## Construction Accomplishments

- Applied for in-water work variance
- Completed bolt testing and advanced progress on main bridge span
- Paving, utility coordination, and shifts in traffic control
- Continued work related to Macadam Bay and Freeman Motors driveway
- Work to support west interchange construction
- Advancements with installation of new signal at 6th/Tacoma

## Right of Way Progress



**ROW actions to be completed = 54**  
**Current as of September, 2015**

## Upcoming Site Work

- Continued main bridge span work (decking, overhangs, concrete, etc.)
- Interchange ramp concrete work
- Completion of SE interchange ramp deck work
- Completion of signal installation at 6th/Tacoma
- Progress with Macadam Bay Driveway realignment

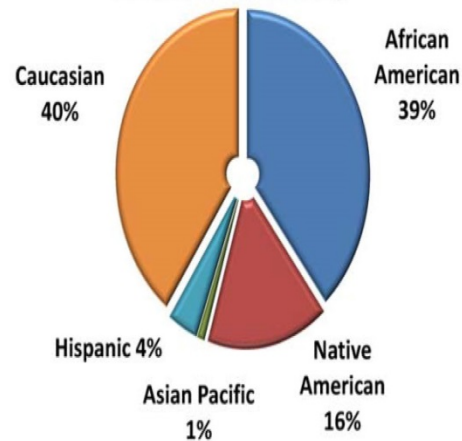
# Diversity Dashboard

# October 2015 Sellwood Small Business Dashboard

## Summary

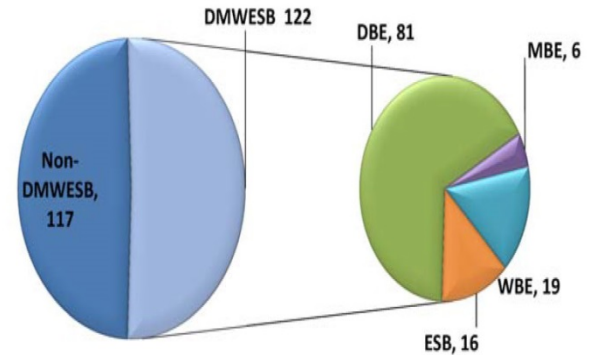
- These charts are based on contracts and dollars awarded.
- The contractor's goal is to award 20% of total contract dollars to DMWESB firms. Currently, the DMWESB Contracted is 17.51% and the DMWESB Paid is 13.97%.

## DMWESB Ethnicity

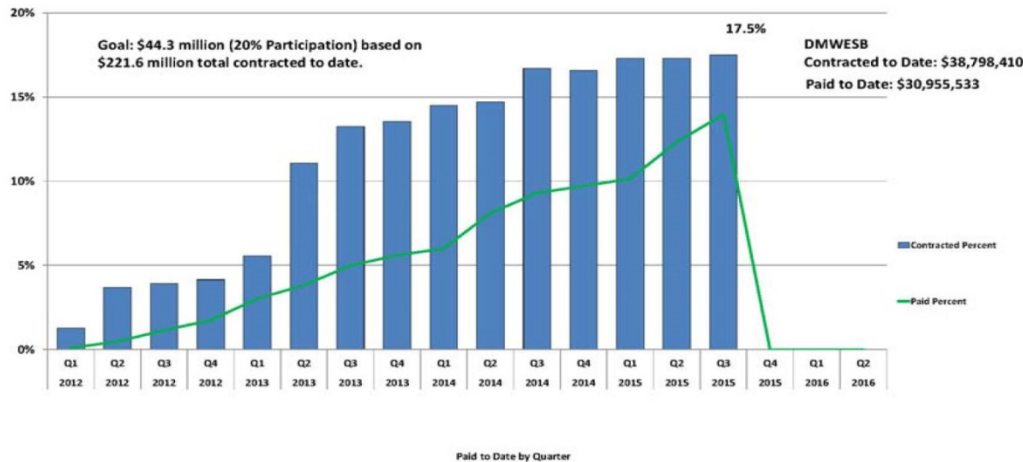


## Total Contracts Awarded

Total Contracts - 239



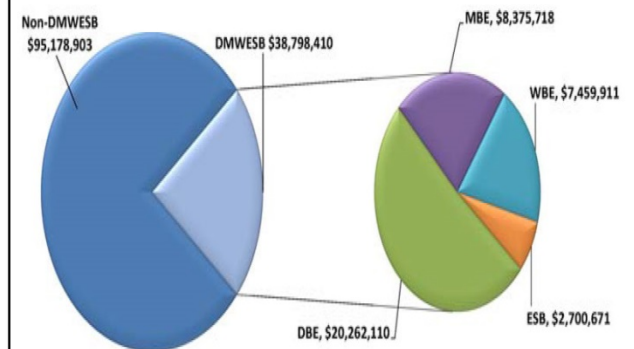
## DMWESB Participation and Paid to Date



## Total Dollars Awarded

\$133,977,313

Total Project Contract Amount  
\$221,630,873

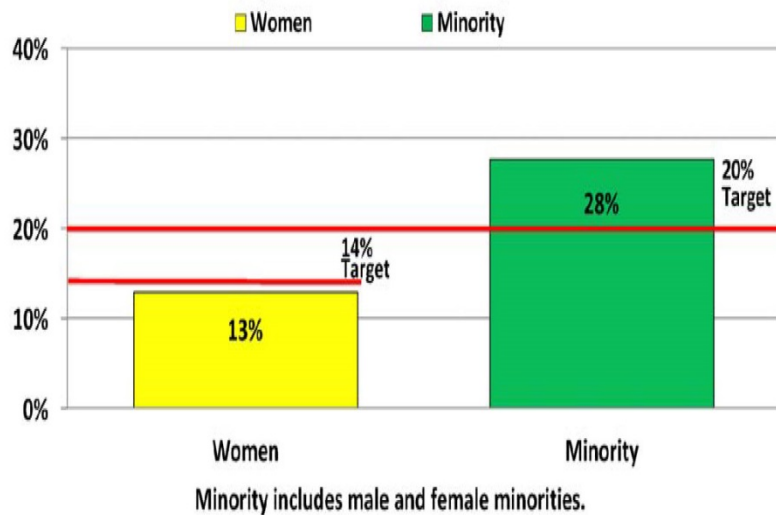


Glossary: DBE—Disadvantaged Business, MBE—Minority-Owned Business, WBE—Women-Owned Business, ESB—Emerging Small Business

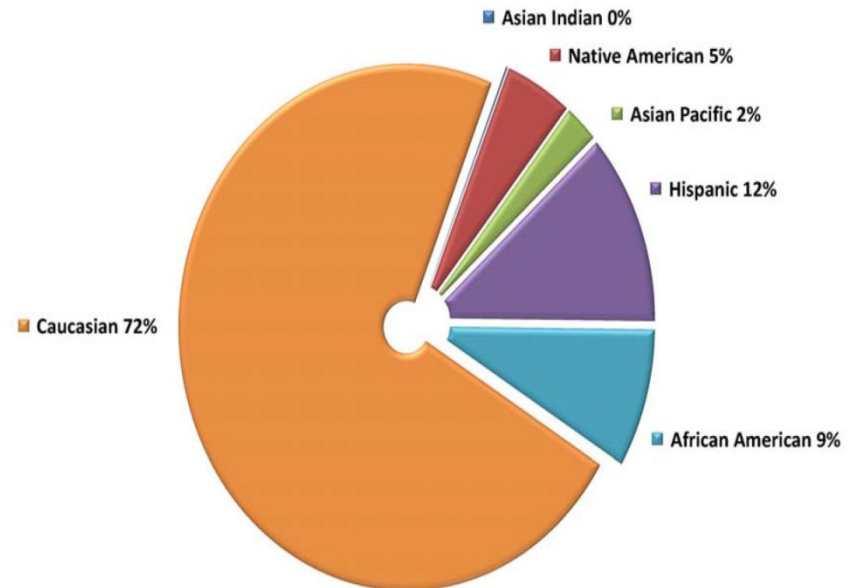
## Summary

- Progress on meeting aspirational goals for minority and female participation.
- SSJV is exceeding the target for minorities and below the target for women.

**Total Workforce Hours  
(Apprentice & Journey Level)**



**Total Workforce Ethnicity  
(Male and Female)**

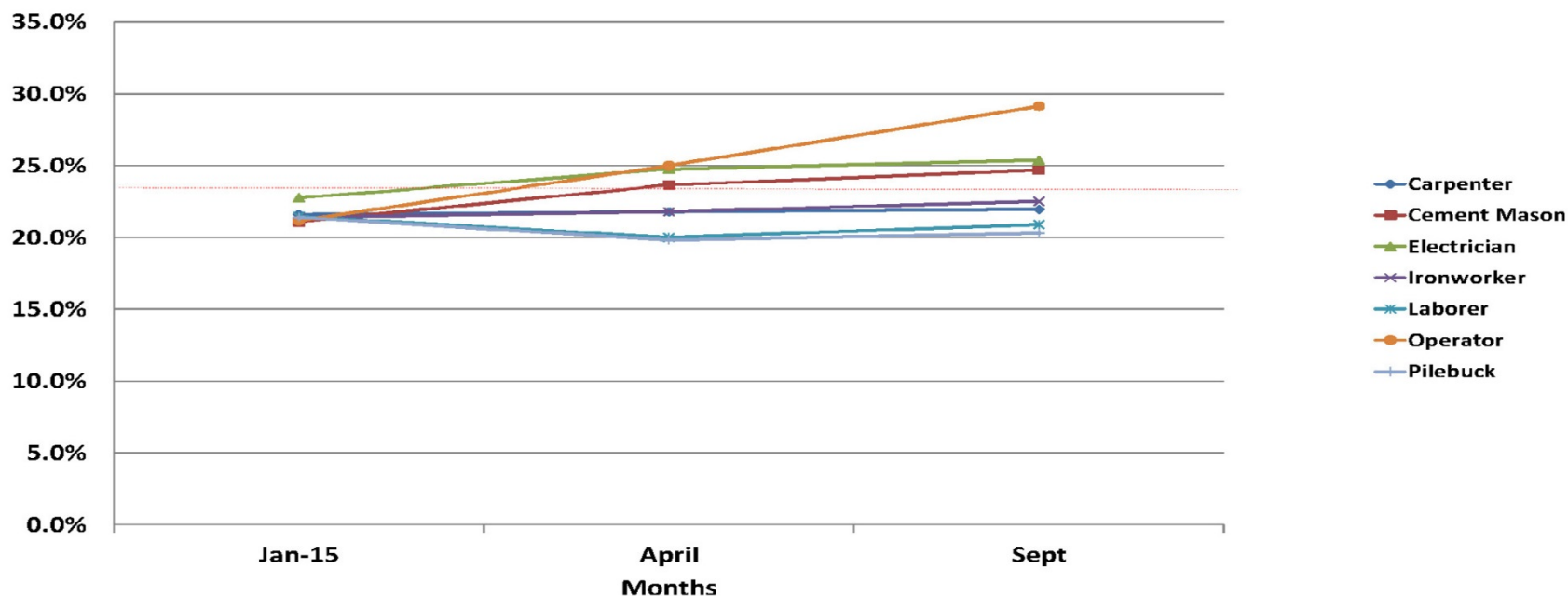


## Summary

The following chart represents total apprenticeship hours by trade for all subcontractors working on the project. Any contractor over \$100K is required to achieve 20% apprenticeship hours by trade per the County's Workforce Training and Hiring Program. Multnomah County allows for exceptions to the apprenticeship requirement based on low hours, complexity of work, safety, and other considerations. The chart reflects apprenticeship including contractor exceptions.

## Apprenticeship by Trade

**Goal: 20% Apprenticeship by Trade**



# Construction Update

# **Sellwood Bridge Replacement Project Information**

- About 84% complete construction
- Traffic on new span – Winter/Spring 2016
- East approach and remaining work complete – Fall 2016



# Construction Progress

## (thru 8/31/15)

	Detour Bridge	Land- slide	Condo. Mods.	Work Bridge	OR 43 Walls	Bridge & IntX	Total
Total Value	\$20.68	\$12.91	\$3.19	\$9.40	\$12.75	\$161.67	\$220.60
Paid to dt	\$20.68	\$12.86	\$3.13	\$8.80	\$12.24	\$127.14	\$184.84
	100%	99.7%	98.0%	93.6%	95.9%	78.6%	83.8%

Costs in millions





09/12/15  
Courtesy of ODOT



# Work

- Landslide stabilization (complete)
- Stephen's Creek culvert (complete)
- Work bridges (complete)
- In-river foundations (complete)
- Condominium rebuild (Phase 1 complete)
- Riverview Cemetery (Phase 1 complete)
- Miles Place (Complete)
- Macadam Bay Driveway
- Regional Trail
- Powers Marine Park
- West OR 43 retaining walls (Complete)
- East OR 43 retaining walls
- OR 43 roadway
- Waterline relocation (Complete)
- West approach
- Removal of old bridge piers
- Main bridge piers
- Steel fabrication (Complete)
- Steel installation
- Main bridge concrete deck
- East approach (S side complete, traffic re-aligned)
- East approach (N side foundations and columns)
- Tacoma Street





09/12/15  
Courtesy of ODOT





















45

25

BAZ  
MID. HALL

TRUCKS









TRUCKS  
ENTERING  
ROAD

STOP

15









SPEED LIMIT  
25







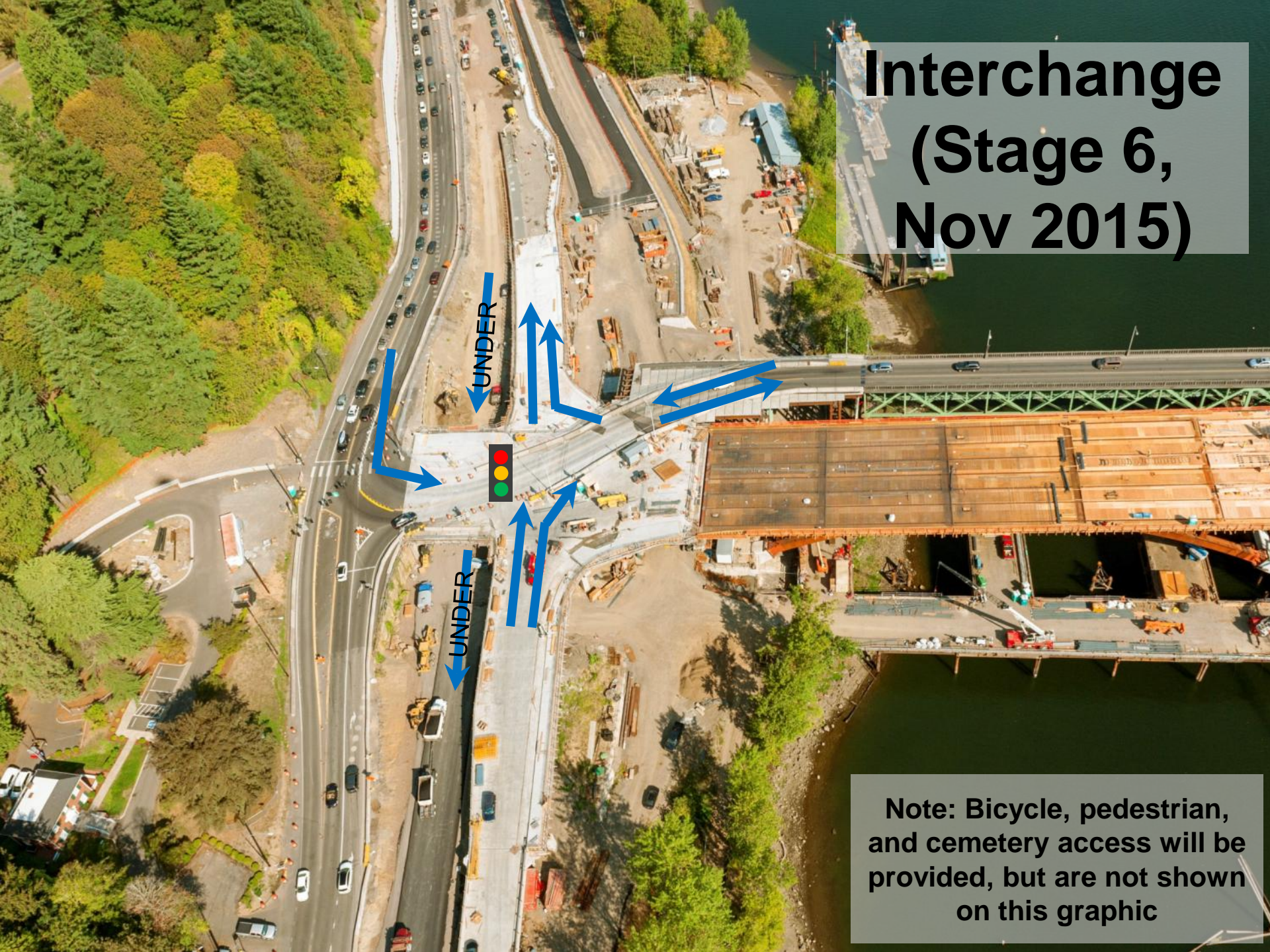








# Interchange (Stage 6, Nov 2015)



**Note: Bicycle, pedestrian,  
and cemetery access will be  
provided, but are not shown  
on this graphic**



# Interchange (Final)



Note: Bicycle, pedestrian, and cemetery access will be provided, but are not shown on this graphic

# Traffic Simulation

Sellwood Bridge/ OR 43, PM peak









09/12/15

Courtesy of ODOT





09/12/15  
Courtesy of ODOT











# Looking Forward

- Fall 2015
  - Macadam Bay Driveway, Powers Marine Park
  - OR 43
  - Northeast and Southeast Ramps
  - Main Bridge Deck
  - 6th and Tacoma Signal
- Winter-Spring 2016
  - Main Bridge Deck
  - Main spans open to traffic
- Summer 2016
  - East approach north half
  - Multi purpose path bridge to south sidewalk
  - Landscaping
  - Removal of old bridge and work bridges
- Late Fall 2016 – Project Complete



# Public Art















Public art  
totem –  
½ size



# Artist's Original Vision





**SE Tacoma Street looking west across bridge.**



# Questions?

