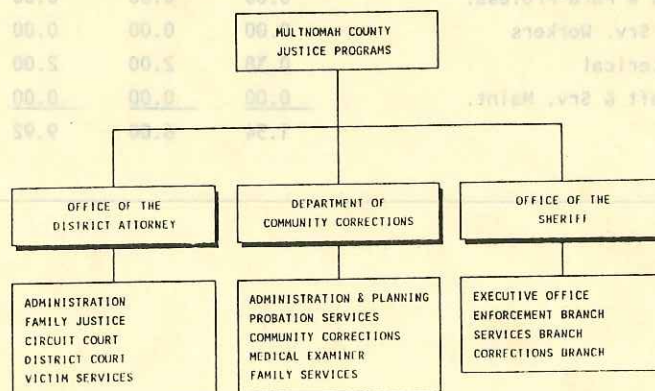


DEPARTMENT OF COMMUNITY CORRECTIONS

<u>ORGANIZATION</u>	<u>PAGE</u>
Summary of Requirements and Departmental Org Chart	DCC-1
2100 Administration and Planning	DCC-2
Org Chart	DCC-2
2101 Administration & Planning	DCC-4
2102 Probate Court	DCC-4
2103 Women's Transition Services	DCC-6
2104 Prostitution Alternatives	DCC-6
2105 Office of Justice Planning	DCC-7
2106 OTSC/DUII Analysis	DCC-7
2113 ADAPT Grant	DCC-8
Detailed Estimate Sheets	
General Fund	B-2
Federal State Fund	B-4
2200 Probation Services	DCC-9
Detailed Estimate Sheets	
General Fund	B-6
Federal State Fund	B-8
2300 Community Corrections	DCC-11
Org Chart	DCC-11
2328 Recognizance/Intake Program	DCC-15
2303 Contract Services	DCC-13
2304 Administration	DCC-14
2305 Alternative Community Services	DCC-15
2334 Domestic Violence Program (history)	DCC-17
2329 DMDA Program (history)	DCC-16
2324 MIS Project	DCC-17
2335 Community Service Forest Project	DCC-17
2336 Maximum Supervision	DCC-18
2322 Alcohol and Drug Residential (Jail Levy)	DCC-19
Detailed Estimate Sheets	
General Fund	B-10
Federal State Fund	B-12
Jail Levy	B-14
2700 Medical Examiner	DCC-20
Detailed Estimate Sheets	
General Fund	B-16
2800 Family Services	DCC-22
Detailed Estimate Sheets	
General Fund	B-18

# DEPARTMENT OF COMMUNITY CORRECTIONS SUMMARY OF REQUIREMENTS

	FTE	PERSONAL SERVICES	MATERIALS & SERVICES	CAPITAL OUTLAY	TOTAL REQUIREMENT	LESS SERVICE REIMBURSEMENT	DIRECT REQUIREMENT
General Fund							
DCC Admin & Planning	10.48	448,168	357,563	5,550	811,231	59,370	751,861
Probation Services	33.32	1,361,763	134,000	7,177	1,502,940	164,846	1,338,094
Community Corrections	18.50	540,351	19,768	16,700	576,819	61,253	515,566
Medical Examiner	9.50	441,487	44,829	1,500	487,816	62,739	425,077
Family Services	9.50	426,636	22,649	5,000	454,285	52,039	402,246
SUBTOTAL	81.40	3,218,405	578,809	35,877	3,833,091	400,247	3,432,844
Federal/State Fund							
DCC Admin. & Planning	2.35	95,400	185,536	5,000	285,936	37,724	248,212
Community Corrections	34.00	1,335,785	2,182,908	12,889	3,531,582	527,277	3,004,305
SUBTOTAL	36.35	1,431,185	2,368,444	17,889	3,817,518	565,001	3,252,517
Jail Levy Fund							
Community Corrections	2.00	60,643	507,882	4,000	572,525	5,625	566,900
DEPARTMENT TOTAL	119.75	\$ 4,710,233	\$ 3,455,135	\$ 57,766	\$ 8,223,134	\$ 970,873	\$ 7,252,261

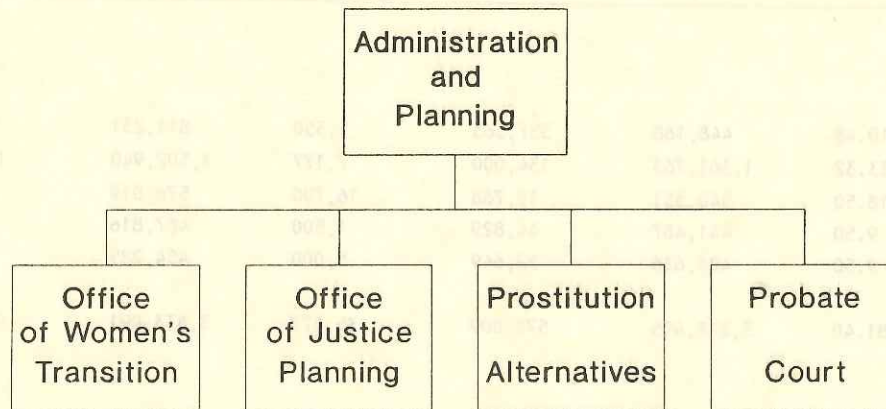


DEPARTMENT OF COMMUNITY CORRECTIONS  
ADMINISTRATION AND PLANNING

Manager: Grant Nelson

Agency 021 Organization 2100

ORGANIZATION CHART



PERSONNEL

	<u>1987-88</u>	<u>1988-89</u>	<u>1989-90</u>	<u>1990-91</u>
Officials & Administrators	1.16	3.00	4.00	3.00
Professionals	0.00	1.00	3.92	6.93
Technicians & Para-Profess.	0.00	0.00	0.00	0.00
Protective Srv. Workers	0.00	0.00	0.00	0.00
Office & Clerical	0.38	2.00	2.00	3.00
Skilled Craft & Srv. Maint.	<u>0.00</u>	<u>0.00</u>	<u>0.00</u>	<u>0.00</u>
Total	1.54	6.00	9.92	12.93



DEPARTMENT OF COMMUNITY CORRECTIONS  
ADMINISTRATION AND PLANNING

**EXPENDITURES**

	General Fund (100)	Federal/State Fund (156)	Total
Personal Services	\$ 448,168	\$ 95,400	\$ 543,568
Materials & Services	357,563	185,536	543,099
Capital Outlay	5,500	5,000	10,500
<b>Total</b>	<b>\$ 811,231</b>	<b>\$ 285,936</b>	<b>\$ 1,097,167</b>

**REVENUE CATEGORIES**

Fd	Org	Organization	Operational	Grant	Other	General Fund Supplement	Total
100	2101	Admin. & Plan.	\$ 0	\$ 0	\$ 0	\$ 130,712	\$ 130,712
100	2102	Probate Ct. Exp.	0	0	0	77,000	77,000
100	2103	Women's Trans.	0	0	0	388,532	388,532
100	2104	Prost. Alt.	0	0	0	83,700	83,700
100	2105	Justice Plng	0	0	0	131,287	131,287
156	2113	ADAPT Grant	0	285,231	0	0	285,231
<b>Total</b>			<b>\$ 0</b>	<b>\$ 285,231</b>	<b>\$ 0</b>	<b>\$ 737,231</b>	<b>\$1,097,167</b>

DEPARTMENT OF COMMUNITY CORRECTIONS  
ADMINISTRATION AND PLANNING

## Administration and Planning Program Description

Provide administrative coordination for the various components of the department. Provide crime and criminal justice information, analysis and reports for decision making as requested. Develop alternative noncustodial sanction and supervision programs which build upon and reflect the successes of other jurisdictions. Work with other justice system components to integrate and maximize the effectiveness of activities and programs of those justice system components.

### Administration and Planning

	<u>1987-88</u>	<u>1988-89</u>	<u>1989-90</u>	<u>1989-90</u>
FTE	1.51	3.92	5.00	2.00
PS	\$ 73,146	\$ 209,593	\$ 251,480	\$ 107,612
M&S	109,874	41,181	52,302	21,600
CO	<u>3,400</u>	<u>4,815</u>	<u>8,250</u>	<u>1,500</u>
Total	\$ 186,420	\$ 255,589	\$ 312,032	\$ 130,712

### Probate Court

	<u>1987-88</u>	<u>1988-89</u>	<u>1989-90</u>	<u>1990-91</u>
FTE	0.00	0.00	0.00	0.00
PS	\$ 0	\$ 0	\$ 0	\$ 0
M&S	96,111	79,532	68,992	77,000
CO	<u>0</u>	<u>0</u>	<u>0</u>	<u>0</u>
TOTAL	\$ 96,111	\$ 79,532	\$ 68,992	\$ 77,000

## Objectives

- Plan and develop programs with the Chair's staff to gain necessary support and understanding of DJS programs and County policy.
- Manage the five divisions of DJS to operate in a planned and coordinated manner to assure adherence to Department objectives.
- Coordinate the DJS agenda before the Board of County Commissioners and monitor state and local legislative items which may impact the County.
- Support development, implementation and evaluation strategies and programs for reducing crime and delinquency, and increasing the administration of justice in Multnomah County by means of noncustodial sanctions.

DEPARTMENT OF COMMUNITY CORRECTIONS  
ADMINISTRATION AND PLANNING

## Administration and Planning (continued)

### Objectives (continued)

- Prepare information and materials, provide liaison with neighborhood and community organizations, and maintain working relationships with local government justice and human service organizations to increase understanding of crime and the administration of justice.
- Represent DJS on internal and external justice related commissions and task forces to maintain coordination and involvement with regional justice services programs.
- Pay out-of-state witness fees as appropriate for probate court in civil commitment cases.
- Provide telephones for law library.
- Develop and analyze data on programs administered by the Department and issue reports of the findings.
- Maintain familiarity with current data and trends within criminal justice and prepare program proposals which reflect successful strategies used in other jurisdictions.

### Explanation of Changes

In July 1989, the Board of County Commissioners created the Office of Justice Planning. This organization is shown separately below.

### Prostitution Alternatives Program Description

Plan, develop and self-initiate non-county funding support, and administer grants and contracts for improving justice operations and services including Council for Prostitution Alternatives.

	1987-88	1988-89	1989-90	1990-91
FTE	0.00	0.00	0.00	0.00
PS	2	2	2	2
MCS	0	\$5,000	\$6,100	\$3,700
CO	0	0	0	0
TOTAL	2	\$5,000	\$6,100	\$3,700

Note: history prior to FY 1988-89 is located in Administration and Planning.

### Objectives

Autism County's support for C.R.A. flows through the City of Portland to CPA. CPA provides slightly more support for CPA than does Autism County. It is the intention of this department to increase CPA's involvement with CPA which may include changes in the funding contract arrangement in place.



DEPARTMENT OF COMMUNITY CORRECTIONS  
ADMINISTRATION AND PLANNING

Manager: Joanne Fuller

Agency 021    Organization 2100

### Women's Transition Services Program Description

To reduce crime and delinquency by planning, developing, funding coordinating, and evaluating services for women offenders to ensure that they become law-abiding, self-supporting and able to provide appropriate care to their dependent children. To ensure the existence of the women's services needed and to optimize the effectiveness and efficiency of service delivery.

		1987-88	1988-89	1989-90	1990-91
FTE		0.03	2.51	4.92	5.90
PS	\$	1,212	\$ 79,397	\$ 174,057	\$ 223,423
M&S		87	65,761	112,906	164,109
CO		0	4,792	3,200	1,000
TOTAL	\$	1,299	\$ 149,960	\$ 290,163	\$ 388,532

### Objectives

- Define clientele needs and other factors which contribute to their criminality or the criminality of their children.
- Assess, develop and recommend additional critical services.
- Place clientele with appropriate services and provide appropriate supervision and support.
- Evaluate quality and efficiency of services and their delivery and recommend improvements.
- Coordinate services with Community Corrections and Sheriff's Office services for female offenders.
- Referral of clientele within the criminal justice system.
- Intergovernmental Agreement with the City of Portland to fund the Council for Prostitution Alternatives.

### Prostitution Alternatives Program Description

Plan, develop and solicit non-County funding support, and administer grants and contracts for improving justice operations and services including Council for Prostitution Alternatives.

		1987-88	1988-89	1989-90	1990-91
FTE		0.00	0.00	0.00	0.00
PS	\$	0	\$ 0	\$ 0	\$ 0
M&S		0	82,000	86,100	83,700
CO		0	0	0	0
TOTAL	\$	0	\$ 82,000	\$ 86,100	\$ 83,700

Note: history prior to FY 1988-89 is located in Administration and Planning.

### Objectives

Multnomah County's support for C.P.A. flows through the City of Portland to CPA. Portland provides slightly more support for CPA than does Multnomah County. It is the intention of this department to increase our programmatic involvement with CPA which may include changes in the funding/contract arrangement in place.

DEPARTMENT OF COMMUNITY CORRECTIONS  
ADMINISTRATION AND PLANNING

Manager: Vacant

Agency 021 Organization 2100

## Office of Justice Planning Program Description

Coordinate the planning, analysis, and implementation of issues and efforts affecting criminal justice agencies in Multnomah County. Develop and analyze criminal justice data and provide accurate information to the County Chair, the Board of County Commissioners, and the Justice Coordinating Council. Coordinate the development of an integrated criminal justice information and analysis system. Assist the Board of Commissioners in developing and implementing County criminal justice policies. Review and advise the Chair and Board of Commissioners on the annual budgets, budget modifications, grants, and proposals by the department of Justice Services, the Sheriff's Office, and the District Attorney's Office for furtherance of the Board's justice policies. Coordinate and staff the activities of the Justice Coordinating Council.

	1987-88	1988-89	1989-90	1990-91
FTE	0.00	0.00	4.00	3.68
PS	\$ 0	\$ 0	\$ 143,530	\$ 117,133
M&S	0	0	31,976	11,154
CO	0	0	9,470	3,000
TOTAL	\$ 0	\$ 0	\$ 184,976	\$ 131,287

## Objectives

- Coordinate the development of comprehensive criminal justice policies and plan for Multnomah County.
- Identify information needs of the Chair, Board of Commissioners, and the Justice Coordinating Council, and develop the data bases and systems needed to meet those needs.
- Complete the development of the ICJIS component operation systems currently underway (Sheriff's system), complete system requirements and design of the District Attorney's information system, and plan for the interfacing of County systems with state and municipal systems.
- Assist the Board in developing a criminal justice policy framework in which issues can be identified and analyzed and in which policies can be formulated within the context of associated issues and policies.
- Review and advise the Chair and Board of Commissioners on budgetary matters related to the Department of Justice Services, the Sheriff's Office, and the District Attorney's Office.

## Explanation of Changes

The future of this program is currently under review.

## OTSC DUII Analysis Program Description

To conclude a study that began in January 1989 to analyze DUII offender processing through the Multnomah County Criminal Justice System.



DEPARTMENT OF COMMUNITY CORRECTIONS  
ADMINISTRATION AND PLANNING

### OTSC DUII Analysis Program Description (continued)

	1987-88	1988-89	1989-90	1990-91
FTE	0.00	0.23	0.00	0.00
PS	\$ 0	\$ 0	\$ 28,239	\$ 0
M&S	0	0	10,459	0
CO	0	0	1,200	0
TOTAL	\$ 0	\$ 0	\$ 39,898	\$ 0

#### Objectives

To design a study and gather information for analysis and to support decision making about DUII offenders and criminal justice issues.

#### Explanation of Changes

This program terminates at the end of fiscal year 1989-90.

### Adapt Program Description

This program will provide services for pregnant, drug-addicted women in the criminal justice system.

	1987-88	1988-89	1989-90	1990-91
FTE	0.00	0.23	1.31	2.35
PS	\$ 0	\$ 0	\$ 42,650	\$ 95,400
M&S	0	0	128,623	185,536
CO	0	0	8,970	5,000
TOTAL	\$ 0	\$ 0	\$ 180,243	\$ 285,936

#### Objectives

Provide drug and alcohol treatment, case management, cross-discipline training and evaluation for women in the Multnomah County criminal justice system.

DEPARTMENT OF COMMUNITY CORRECTIONS  
PROBATION SERVICES

Manager: Wayne Salvo

Agency 021 Organization 2200

**PERSONNEL**

	1987-88	1988-89	1989-90	1990-91
Officials & Administrators	3.00	3.00	3.00	4.00
Professionals	18.00	18.00	19.00	20.00
Technicians & Para-Profess.	0.00	0.00	0.00	0.00
Protective Srv. Workers	0.00	0.00	0.00	0.00
Office & Clerical	8.00	8.00	9.00	9.32
Skilled Craft & Srv. Maint.	0.00	0.00	0.00	0.00
<b>Total</b>	<b>29.00</b>	<b>29.00</b>	<b>31.00</b>	<b>33.32</b>

**EXPENDITURE**

	General Fund	Total
	(100)	
Personal Services	\$ 1,361,763	\$ 1,361,763
Materials & Services	134,000	134,000
Capital Outlay	7,177	7,177
<b>Total</b>	<b>\$ 1,502,940</b>	<b>\$ 1,502,940</b>

**REVENUE CATEGORIES**

Fd	Org	Organization	Operational	Grant	Other	General Fund Supplement	Total
100	2201	Probation Svc.	\$ 45,000	\$ 0	\$ 0	\$ 1,457,940	\$ 1,502,940
			\$ 45,000	\$ 0	\$ 0	\$ 1,457,940	\$ 1,502,940

**Probation Services Program Description**

- To enhance public safety by supervising and monitoring offender compliance with court ordered conditions and state laws.
- To facilitate changes in offender behavior through service brokerage, direct counseling, psychological services and other casework methods.
- To assist in restoration of individual and community losses by ensuring repayment of restitution and fines.
- To provide sentencing alternatives to the courts via presentence investigations.
- To research cost effective methods of DUII offender probation supervision for FY 1987-89.

DEPARTMENT OF COMMUNITY CORRECTIONS

PROBATION SERVICES

**Probation Services (continued)**

General Fund

	1987-88	1988-89	1989-90	1990-91
FTE	23.06	24.03	27.00	33.32
PS	\$ 831,964	\$ 893,408	\$ 1,039,703	\$ 1,361,763
M&S	58,778	67,012	78,635	134,000
CO	8,606	5,964	6,300	7,177
TOTAL	\$ 899,348	\$ 966,384	\$ 1,124,638	\$ 1,502,940

Federal State Fund

	1987-88	1988-89	1989-90	1990-91
FTE	2.44	3.87	4.00	0.00
PS	\$ 89,780	\$ 135,567	\$ 154,329	\$ 0
M&S	15,422	30,449	37,898	0
CO	0	0	0	0
TOTAL	\$ 105,202	\$ 166,016	\$ 192,227	\$ 0

**Objectives**

- Supervise misdemeanor offenders by regular face-to-face meetings to review their compliance with court orders, observe psychosocial functioning, to re-affirm the judicial sanction, and provide direct services or referral.
- Supervise, counsel and provide service brokerage to targeted offender groups, i.e., domestic violence offenders and mental health clients who would otherwise not receive services that promote their social stability and decrease the likelihood of their recidivism.
- To swiftly intervene and facilitate or cause the offender to be placed in custody or brought before the court for violations of probations.
- Investigate offenders referred by Courts and provide sentencing alternatives to promote use of community resources and enhance potential for offender habilitation.
- FY 90-91 includes the additional objective to implement enhanced assessment tool for caseload.

**Explanation of Changes**

OTSC Grant ends at the end of fiscal year 1989-90 (June 30, 1990).



DEPARTMENT OF COMMUNITY CORRECTIONS  
COMMUNITY CORRECTIONS

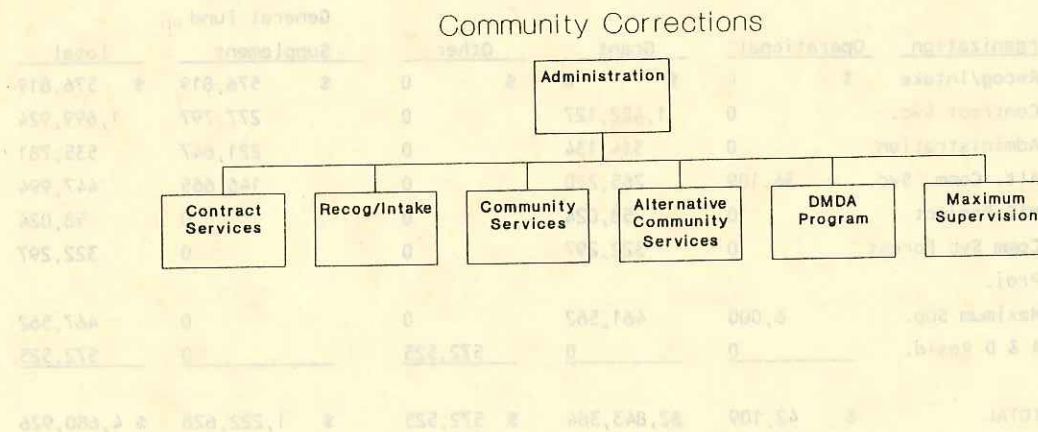
Manager: Cary Harkaway

Agency 021 Organization 2300

## MISSION

The mission of Community Corrections is to plan, provide, manage, and evaluate correctional programs and contract services for pre and post sentenced adult offenders within the local criminal justice system and to enhance the delivery of those services to specific client populations pursuant to the Community Corrections Act (ORS 423.500).

## ORGANIZATIONAL CHART



## PERSONNEL

	<u>1987-88</u>	<u>1988-89</u>	<u>1989-90</u>	<u>1990-91</u>
Officials & Administrators	5.59	3.00	4.00	5.00
Professionals	7.73	13.00	20.00	27.50
Technicians & Para-Profess.	5.75	8.50	14.60	11.60
Protective Srv. Workers	0.00	0.00	0.00	0.00
Office & Clerical	2.62	6.25	11.00	11.00
Skilled Craft & Srv. Maint.	<u>0.00</u>	<u>0.00</u>	<u>0.00</u>	<u>0.00</u>
Total	21.49	30.75	49.60	54.50

DEPARTMENT OF COMMUNITY CORRECTIONS  
COMMUNITY CORRECTIONS

**EXPENDITURES**

	General Fund (100)	Federal/State Fund (156)	Jail Levy Fund (169)	Total
Personal Services	\$ 540,351	\$ 1,335,785	\$ 60,643	\$ 1,936,779
Materials & Services	19,768	2,182,908	507,882	2,710,558
Capital Outlay	16,700	12,889	4,000	33,589
Total	\$ 576,819	\$ 3,531,582	\$ 572,525	\$ 4,680,926

**REVENUE CATEGORIES**

Fd	Org	Organization	Operational	Grant	Other	General Fund Supplement	Total
100	2328	Recog/Intake	\$ 0	\$ 0	\$ 0	\$ 576,819	\$ 576,819
156	2303	Contract Svc.	0	1,422,127	0	277,797	1,699,924
156	2304	Administration	0	314,134	0	221,647	535,781
156	2305	Alt. Comm. Svc.	36,109	265,220	0	146,665	447,994
156	2324	MIS Project	0	58,024	0	0	58,024
156	2335	Comm Svc Forest Proj.	0	322,297	0	0	322,297
156	2336	Maximum Sup.	6,000	461,562	0	0	467,562
169	2322	A & D Resid.	0	0	572,525	0	572,525
TOTAL			\$ 42,109	\$2,843,364	\$ 572,525	\$ 1,222,628	\$ 4,680,926

Note: Other revenue is from the Jail Levy.

DEPARTMENT OF COMMUNITY CORRECTIONS  
COMMUNITY CORRECTIONS

## Community Corrections Contracts Program Description

Community Corrections contract services provide the Division with the ability to serve the unique and varied offender target populations within the criminal justice system. These services are all prioritized within the 89-91 Community Corrections plan after various needs assessment are completed. All proposals are awarded after completion of the County competitive bid process.

	1987-88	1988-89	1989-90	1990-91
FTE	0.00	0.00	0.00	0.00
PS	\$ 0	\$ 0	\$ 0	\$ 0
M&S	1,024,300	831,263	1,705,876	1,699,924
CO	0	0	0	0
TOTAL	\$ 1,024,300	\$ 831,263	\$ 1,705,876	\$ 1,699,924

## Objectives

- Provide emergency shelter, food, transportation, bus fare and medical expenses to 400 indigent pre- and post- trial offenders through use of a revolving fund.
- Provide intensive sex offender therapy for 30 individuals convicted of C-Felony sex offenses, as a condition of state probation.
- Provide third-party non-custody release to 720 eligible pretrial detainees.
- Provide pre- and post- trial residential supervision for 120 high risk female offenders charged with misdemeanor or felony offenses.
- Provide appropriate contract services for offenders as determined by Community Corrections Division needs assessment process during 89-91 biennium.
- Provide residential alcohol and drug services to 140 offenders referred by the Circuit Court.
- Provide intensive job readiness and placement services for 160 offenders with chronic employment problems.
- Provide case management services for late stage chronic alcoholics, who would otherwise remain in custody, Detox, or Dammasch.
- Provide residential Drug Detox and Treatment Services.
- Upgrade the management information system.
- Provide non-institutional mental health services.
- Provide program development.

## Identification of Mandates

- 1.) CCA 423.500
- 2.) Approved Community Corrections Plan 89-91



DEPARTMENT OF COMMUNITY CORRECTIONS  
COMMUNITY CORRECTIONS

### Community Corrections Contracts Program Description (continued)

#### Contract Services for adult offenders.

Federal/State Fund (156)	1987-88	1988-89	1989-90	1990-91
2323 Emergency Services	\$ 5,000	\$ 5,000	\$ 10,000	\$ 9,999
2313 Sex Offender Treatment	20,000	20,000	26,584	26,400
2310 Pretrial Services	58,000	58,000	64,246	63,800
2308 Women's Services	99,800	235,895	385,989	388,222
2312 Non-Residential Alcohol & Drug	70,500	0	84,600	132,500
2311 Residential Alcohol & Drug	25,000	25,000	32,727	32,500
2309 Employment Services	20,000	20,000	0	0
2301 Evaluation Services	5,000	0	5,000	7,336
2320 Case Management Program	130,000	130,000	130,000	134,223
2325 Council on Prost. Alts.	0	0	0	0
2322 Undesignated Services	184,000	37,981	271,792	239,111
2337 Residential Drug Detox & Treatment Svcs.	227,000	128,887	429,700	488,988
2338 Management Info System	50,000	50,000	108,000	1,170
2339 Intensive Job Readiness Svcs.	100,000	50,000	140,980	140,000
2340 Non-Inst. Mental Hlth Svc.	0	70,500	0	0
2304 Program Development	30,000	15,040	0	0
Total	\$ 1,024,300	\$ 831,263	\$ 1,689,618	\$ 1,661,249

### Community Corrections Administration Program Description

The Administration Section combines the functions of administration with ongoing program development and planning for the Community Corrections Division.

	1987-88	1988-89	1989-90	1990-91
FTE	3.53	2.62	8.00	8.00
PS \$	161,412	\$ 89,063	\$ 295,768	\$ 327,919
M&S	204,131	160,957	161,233	199,299
CO	0	0	0	8,563
TOTAL	\$ 365,543	\$ 250,020	\$ 457,001	\$ 535,781

#### Objectives

- Administer, monitor, and evaluate all Community Corrections programs and activities for compliance with the Community Corrections plan, law, and Board of County Commissioner policy.
- Provide and prepare all budget materials and fiscal program reports per state and county requirements.
- Provide staffing for the Community Corrections Advisory Committee and its subcommittees.
- Initiate grant proposals to various funding sources for innovative correctional programs.
- Provide contract administration to all Community Corrections purchase of service agreements.
- Provide resource coordination to the courts, state probation, and county probation.

DEPARTMENT OF COMMUNITY CORRECTIONS  
COMMUNITY CORRECTIONS

## Community Corrections Administration Program Description (continued)

### Objectives (continued)

- Provide budgetary program support to DHS Corrections Health non-institutional mental health program.
- Provide legislative review and monitoring.
- Provide training orientations to the Community Corrections Advisory Committee, Board of County Commissioners, public, and state parole and probation.
- Participate in Countywide criminal justice planning efforts.

## Alternative Community Services Program Description

Provide the District and Circuit Courts with a sentencing option for adult offenders to be used in lieu of or in conjunction with probation, incarceration, or fines and provide offenders with an opportunity to make restitution to the community by performing uncompensated public service work with either a participating public service agency or with a supervised work crew.

	1987-88	1988-89	1989-90	1990-91
FTE	4.63	4.54	10.00	10.00
PS	\$ 103,788	\$ 106,298	\$ 321,295	\$ 372,416
M&S	31,456	26,660	60,455	75,578
CO	0	12,824	0	0
TOTAL	\$ 135,244	\$ 145,782	\$ 381,750	\$ 447,994

### Objectives

- Interview, place, and monitor 4500 community service referrals from the District and Circuit Courts.
- Provide clerical support for programs including general reception, typing, filing, and data entry in the computerized client tracking system.
- Provide project supervision of offenders at pre-selected work sites.
- Provide program coordination, special project development, court liaison activities, and employee supervision.

### Identification of Mandates

- 1.) ORS 137.126
- 2.) Approved Community Corrections Plan
- 3.) ORS 423.500

## Recog/Intake Program Description

The recog intake program enhances the overall functioning of the pre-trial release system in Multnomah County by providing 24 hour per day interviewing of all pre-trial detainees as well as intensified supervision through the Pre-Trial Release Supervision Program. These programs are both managed by the courts in conjunction with the Community Corrections Division.



DEPARTMENT OF COMMUNITY CORRECTIONS  
COMMUNITY CORRECTIONS

### Recog/Intake Program Description (continued)

	1987-88	1988-89	1989-90	1990-91
FTE	0.00	13.29	10.00	18.50
PS	\$ 0	\$ 200,282	\$ 269,924	\$ 540,351
M&S	0	2,578	0	19,768
CO	0	5,329	6,000	16,700
TOTAL	\$ 0	\$ 208,189	\$ 275,924	\$ 576,819

### Objectives

- Provide Circuit Court's Pretrial Release Office with staff to maintain 24- hour per day interview and assessment of all pretrial detainees.
- Provide clerical support to Circuit Court's Pretrial Release Office for assistance with 24 hour interviewing and assessment.
- Provide staff support to Pretrial Release Office Supervision Program to supervise referrals.

### DMDA Program Program Description

The DMDA or Drug Monitoring of Drug Using Arrestees Program is a federally funded program which offers all persons held in pre-trial custody the opportunity to participate in a voluntary urine testing program to determine type and level of drug use. Judges use this information to determine pre-trial release conditions. The Division coordinates the interagency program and reports findings to the Washington D.C. based Pre-trial Resource Agency.

	1987-88	1988-89	1989-90	1990-91
FTE	1.06	5.59	7.00	0.00
PS	\$ 49,429	\$ 156,969	\$ 186,993	\$ 0
M&S	250,126	247,364	126,030	0
CO	6,196	2,099	0	0
TOTAL	\$ 305,751	\$ 406,432	\$ 313,023	\$ 0

### Objectives

- By contract with service provider, identify drug using offenders by performing drug testing on pretrial detainees.
- Provide information on drug use to courts.
- Monitoring pretrial releases for drug use.
- Encourage drug using arrestees to participate in treatment.



DEPARTMENT OF COMMUNITY CORRECTIONS  
COMMUNITY CORRECTIONS

## Community Corrections MIS Project

Complete the installation of a management information system for the Division.

		<u>1987-88</u>	<u>1988-89</u>	<u>1989-90</u>	<u>1990-91</u>
FTE		0.00	0.00	0.00	0.00
PS	\$	13,811	\$ 23,853	\$ 32,022	\$ 0
M&S		774	5,635	2,978	57,621
CO		<u>0</u>	<u>0</u>	<u>0</u>	<u>0</u>
TOTAL	\$	14,585	\$ 29,488	\$ 35,000	\$ 0

## Domestic Violence Program Description

Provide alternative program for the courts to process various domestic violence cases.

		<u>1987-88</u>	<u>1988-89</u>	<u>1989-90</u>	<u>1990-91</u>
FTE		0.00	0.00	0.00	0.00
PS	\$	13,811	\$ 23,853	\$ 32,022	\$ 0
M&S		774	5,635	2,978	0
CO		<u>0</u>	<u>0</u>	<u>0</u>	<u>0</u>
TOTAL	\$	14,585	\$ 29,488	\$ 35,000	\$ 0

## Objectives

- Provide program coordination for the Circuit Court's Domestic Violence Project.

## Explanation of Changes

Funding terminates.

## Community Service Forest Project Program Description

To provide the Circuit Court with intensive community service work assignments for adult felons who would otherwise be incarcerated in local jail or state prison for new crimes or probation violations, with an overall goal of reducing the rate of commitments to prison.

		<u>1987-88</u>	<u>1988-89</u>	<u>1989-90</u>	<u>1990-91</u>
FTE		1.94	6.00	5.60	7.00
PS	\$	78,044	\$ 226,214	\$ 185,442	\$ 246,981
M&S		31,087	72,831	58,743	75,316
CO		<u>0</u>	<u>800</u>	<u>0</u>	<u>0</u>
TOTAL	\$	109,131	\$ 299,845	\$ 244,185	\$ 322,297

DEPARTMENT OF COMMUNITY CORRECTIONS  
COMMUNITY CORRECTIONS

## Objectives

- Screen, place and monitor felony probationers and probation violators for program participation.
- Provide 24 hour per day supervision for offender participants, 2 groups of 15 offenders per month.
- Provide program coordination, development, and interagency cooperation.

## Identification of Mandates

- 1.) ORS 423,500
- 2.) Community Corrections Plan 89-91

DEPARTMENT OF COMMUNITY CORRECTIONS  
COMMUNITY CORRECTIONS

## Maximum Supervision Program Description

The mission of the Maximum Supervision Program is to provide the courts with a program to intensively supervise adult felony offenders who would otherwise be incarcerated in local jail or prison.

	1987-88	1988-89	1989-90	1990-91
FTE	0.10	0.00	9.00	9.00
PS	\$ 3,611	\$ 138,723	\$ 338,994	\$ 388,469
M&S	343	12,271	28,247	74,767
CO	0	0	0	4,326
TOTAL	\$ 3,954	\$ 150,994	\$ 367,241	\$ 467,562

### Objectives

- Screen and accept 250 felon probationers per year.
- Provide supervision to 100 percent of referrals consistent with needs and risk.
- Coordinate with Department of Corrections Unit to provide supervision to all drug involved felon probationers.
- To maintain a 60 percent success rate for all offenders participating.

## Alcohol and Drug Residential Program Description

The program provides 90 days of residential substance abuse treatment within a structured environment and offers the courts an alternative to incarceration for a target population of offenders ordered to serve custody units under Sentencing Guidelines.

	1987-88	1988-89	1989-90	1990-91
FTE	0.00	0.00	0.00	2.00
PS	\$ 0	\$ 0	\$ 0	\$ 60,643
M&S	0	0	0	507,882
CO	0	0	0	4,000
TOTAL	\$ 0	\$ 0	\$ 0	\$ 572,525

### Objectives

- Enroll 160 clients per year.
- Provide a course of treatment that meets or exceeds State standards.
- Maintain a 60% successful completion rate (client meets majority of treatment objectives).
- Increase the sanctioning capacity of the County by providing a 40 bed alternative sanction that incorporates treatment, incapacitation and deterrence components.

### Explanation of Changes

This is a program being operated from Jail Levy monies.



DEPARTMENT OF COMMUNITY CORRECTIONS  
MEDICAL EXAMINER

Manager: Bob Felton

Agency 021 Organization 2700

### MISSION

To investigate all types of deaths occurring in Multnomah County which are required and specified in ORS Chapter 146.  
Responsibilities are to:

- establish the cause and manner of death so a pathologist can sign the death certificate;
- locate and notify the next-of-kin that the death occurred;
- protect the personal property of the deceased until family or responsible party can take charge.

### PERSONNEL

	1987-88	1988-89	1989-90	1990-91
Officials & Administrators	1.36	1.00	1.00	1.00
Professionals	0.04	0.00	0.00	0.00
Technicians & Para-Profess.	5.07	5.00	5.00	5.00
Protective Srv. Workers	0.00	0.00	0.00	0.00
Office & Clerical	1.14	1.50	1.50	1.50
Skilled Craft & Srv. Maint.	1.00	1.00	2.00	2.00
Total	8.50	8.50	9.50	9.50

### EXPENDITURES

	General Fund (100)	Total
Personal Services	\$ 443,987	\$ 443,987
Materials & Services	44,829	44,829
Capital Outlay	1,500	1,500
Total	\$ 490,316	\$ 490,316

### REVENUE CATEGORIES

<u>Fd</u>	<u>Org</u>	<u>Organization</u>	<u>Operational</u>	<u>Grant</u>	<u>Other</u>	<u>General Fund Supplement</u>	<u>Total</u>
100	2701	Med. Examiner	\$ 20,825	\$ 0	\$ 0	\$ 469,491	\$ 490,316

DEPARTMENT OF COMMUNITY CORRECTIONS  
MEDICAL EXAMINER

## Medical Examiner Program Description (continued)

	1987-88	1988-89	1989-90	1990-91
FTE	8.50	8.50	9.50	9.50
PS	\$ 335,065	\$ 350,060	\$ 405,235	\$ 405,235
M&S	44,937	44,623	46,366	44,829
CO	1,200	1,100	0	0
TOTAL	\$ 381,202	\$ 395,783	\$ 451,601	\$ 490,316

### Objectives

- Administration and management of the Multnomah County Medical Examiner's Office as well as the investigation of a substantial number of deaths.
- Assistance with autopsies and maintenance of morgue.
- Investigation of all deaths occurring in Multnomah County which fall under the types specified by ORS 146. Typing death certificates, autopsy reports, insurance forms, letters, etc., and various other clinical functions.

### Identification of Mandates

146.065 - Each County shall have a Medical Examiner. The medical examiner shall investigate and certify the cause and manner of all human death:

- Apparently homicidal, suicidal or occurring under suspicious or unknown circumstances;
- Resulting from the unlawful use of controlled substances or the use or abuse of chemicals or toxic agents;
- Occurring while incarcerated in any jail, correction facility or in police custody;
- Apparently accidental or following an injury;
- By disease, injury or toxic agent during or arising from employment;
- While not under the care of a physician during the period immediately prior to death;
- Related to disease which might constitute a threat to the public health; or
- In which a human body apparently has been disposed of in an offensive manner.

DEPARTMENT OF COMMUNITY CORRECTIONS  
FAMILY SERVICES

Manager: Jim Dudley

Agency 021 Organization 2800

### MISSION

- To provide marriage counseling (conciliation) under the supervision of the Circuit Court, in accordance with ORS 107.510-615.
- To provide mediation services under ORS 107.510-615 and the mandatory mediation rule.
- To maintain compliance with Court directed Child Custody and/or visitation Evaluations in disputed cases, in accordance with ORS 107.425.
- To provide diagnosis and treatment to parents and children who are having problems as a result of family disruption.

### PERSONNEL

	1987-88	1988-89	1989-90	1990-91
Officials & Administrators	1.51	1.00	1.00	1.00
Professionals	5.52	5.50	5.50	5.50
Technicians & Para-Profess.	0.00	0.00	0.00	0.00
Protective Srv. Workers	0.00	0.00	0.00	0.00
Office & Clerical	2.09	3.00	3.00	3.00
Skilled Craft & Srv. Maint.	0.00	0.00	0.00	0.00
Total	9.12	9.50	9.50	9.50

### EXPENDITURES

	General Fund (100)	Total
Personal Services	\$ 0	\$ 0
Materials & Services	0	0
Capital Outlay	0	0
Total	\$ 0	\$ 0

### REVENUE CATEGORIES

Fd	Org	Organization	Operational	Grant	Other	General Fund Supplement	Total
100	2800	Family Svcs.	\$ 0	\$ 0	\$ 456,681	\$ 0	\$ 456,681

	1987-88	1988-89	1989-90	1990-91
FTE	9.50	9.50	9.50	9.50
PS	\$ 354,393	\$ 361,541	\$ 397,089	\$ 429,032
M&S	15,720	18,570	22,886	22,649
CO	5,000	5,000	5,000	5,000
TOTAL	\$ 375,113	\$ 385,111	\$ 424,975	\$ 456,681



DEPARTMENT OF COMMUNITY CORRECTIONS  
FAMILY SERVICES

---

**Family Services (continued)**

**Objectives**

- Mandatory mediation with divorcing parents.
- Conciliation (marriage counseling) for any County resident requesting service.
- Custody and visitation studies ordered by the Court.
- Administrative and clerical duties for the division.
- Intake services.

**Identification of Mandates**

107.775 The circuit courts may obtain mediation services, upon approval of the BCC, with all related expenses of the services to be paid by the County.

---