

Legal Description, West Parcel. (Parcel 1)

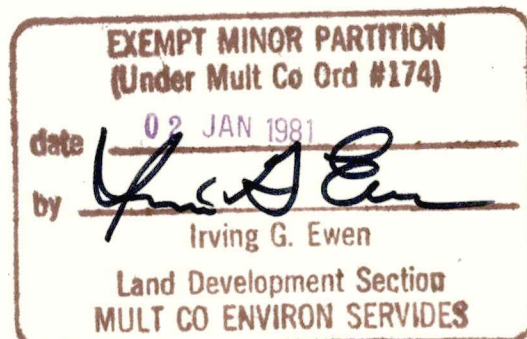
A part of Lots 16 and 17, PADDOCK HOMESITES, a plat of record situated in the N.W. 1/4 of Section 20, T 1N, R 2E, W.M., Multnomah County, Oregon, being more particularly described as follows;

Beginning at the southeast corner of said Lot 17; thence N 89° 38' 07" W along the south line thereof a distance of 32.29 ft.; thence N 0° 32' 30" E parallel with the east line of said Lot 17 a distance of 148.39 ft. to a point in the north line of said Lot 17; thence S 89° 38' 07" E along the north line of said Lots 17 and 16, a distance of 60.00 ft.; thence S 0° 32' 30" W parallel with the east line of said Lot 17 a distance of 74.20 ft.; thence N 89° 38' 07" W a distance of 20.00 ft.; thence S 0° 32' 30" W parallel with the east line of said Lot 17 a distance of 74.19 ft. to a point in the south line of said Lot 16; thence N 89° 38' 07" W along the south line of said Lot 16 a distance of 7.71 ft. to the point of beginning containing 7,419.6 square feet, more or less.

Legal Description, East Parcel; (Parcel 2)

A part of Lot 16, PADDOCK HOMESITES, a plat of record situated in the N.W. 1/4 of Section 20, T 1N, R 2E, W.M., Multnomah County, Oregon, being more particularly described as follows;

Beginning at a point in the south line of said Lot 16 which bears S 89° 38' 07" E a distance of 7.71 ft. from the southwest corner thereof; thence N 0° 32' 30" E parallel with the west line of said Lot 16 a distance of 74.19 ft.; thence S 89° 38' 07" E a distance of 20.00 ft.; thence N 0° 32' 30" E parallel with the west line of said Lot 16 a distance of 74.20 ft. to a point in the north line thereof; thence S 89° 38' 07" E along the north line of said Lot 16 a distance of 40.00 ft.; thence S 0° 32' 30" W parallel with the west line of said Lot 16 a distance of 148.39 ft. to a point in the south line of said Lot 16; thence N 89° 38' 07" W along said south line a distance of 60.00 ft. to the point of beginning containing 7,419.4 square feet, more or less.





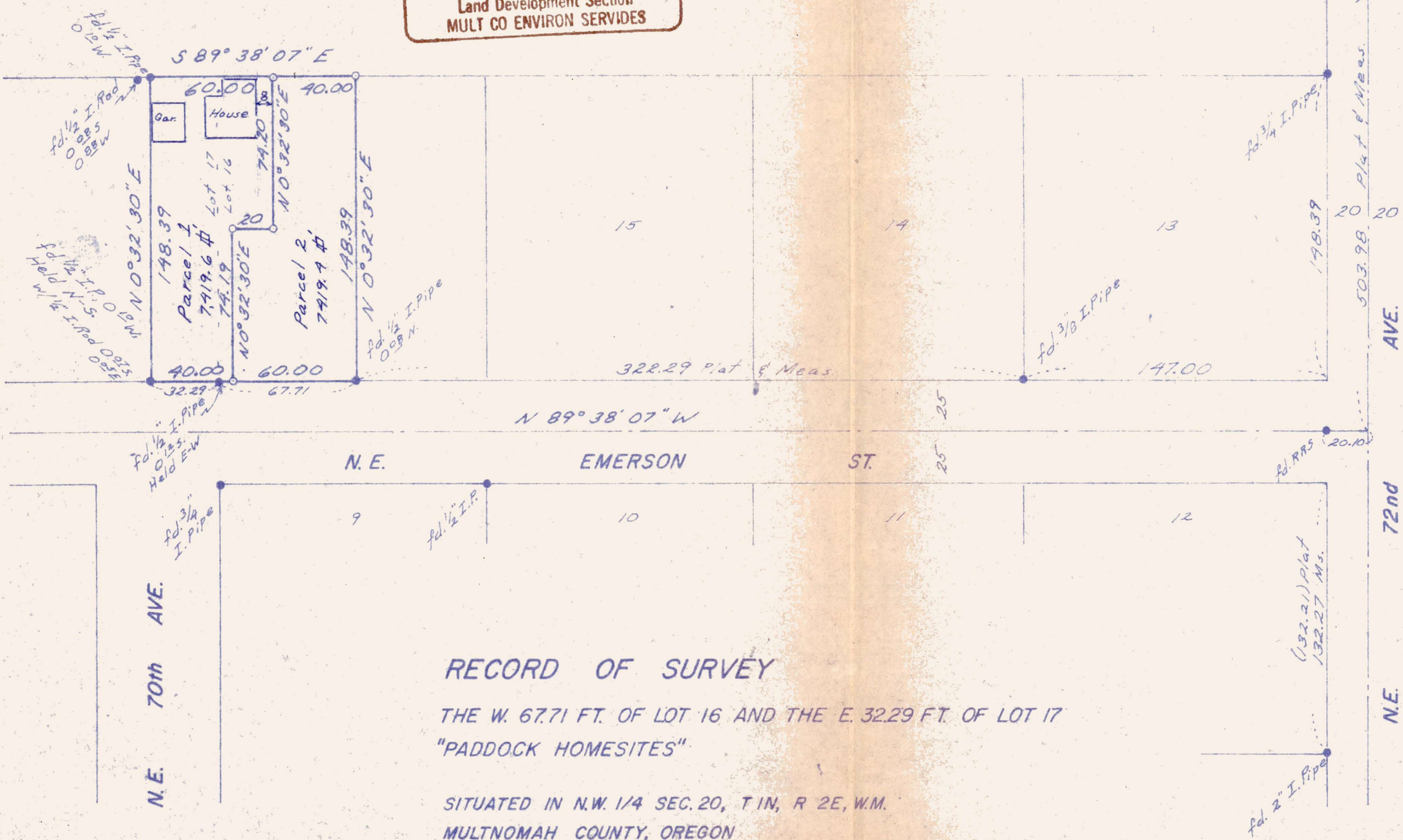
Fred Jensen

Executive Vice President
Marketing Director

Administrative Office • 815 N. E. Davis Street
Portland, Oregon 97232 • (503) 231-4412

EXEMPT MINOR PARTITION
(Under Mult Co Ord #174)
date 02 JAN 1981
by *Irving G. Ewen*
Irving G. Ewen
Land Development Section
MULT CO ENVIRON SERVICES

Fd. Brass Cap 2
N. 1/4 Corner
Sec. 20, T1N, R2E,
W.M.



Notes:
Held monuments as shown,
used plat bearings and
distances for control.
• Mon. found as noted.
• 5/8" x 30" I. Rod w/cap set.

RECORD OF SURVEY

THE W. 67.71 FT. OF LOT 16 AND THE E. 32.29 FT. OF LOT 17
"PADDOCK HOMESITES"

SITUATED IN N.W. 1/4 SEC. 20, T1N, R 2E, W.M.
MULTNOMAH COUNTY, OREGON

OCT. 21, 1980

SCALE: 1" = 50'

REGISTERED
PROFESSIONAL
LAND SURVEYOR
John G. Reppeto
OREGON
JULY 10, 1964
JOHN G. REPPETO
657

JOHN G. REPPETO
Surveyor
4235 SE Division Portland, OR 97206
Phone 236-4648