

Willamette River Bridge Program 2017 Major Projects



Department of
Community Services
Transportation Division
February 9, 2017

DCS Transportation Division - Bridge Program 2017 Major Projects

Agenda

- Overview
- Traffic impacts
- Timeline
- Inter-agency coordination
- Questions



DCS Transportation Division - Bridge Program

2017 Major Projects

Broadway Bridge:

Rail Wheel Replacement Project
March 2017 – October 2017

Burnside Bridge:

Maintenance Project
March 2017 – November 2019

Morrison Bridge:

Deck Replacement Project
March 2017 – October 2017



DCS Transportation Division - Bridge Program

Broadway Bridge Rail Wheel Replacement



DCS Transportation Division - Bridge Program

Broadway Bridge Rail Wheel Replacement

Reason for Project:

Replace Old Rail Wheels and Tracks

- 104 Years of service
- Rail wheels and tracks worn out
- Other mechanical Work
- \$13.5 M total, 90% Federal

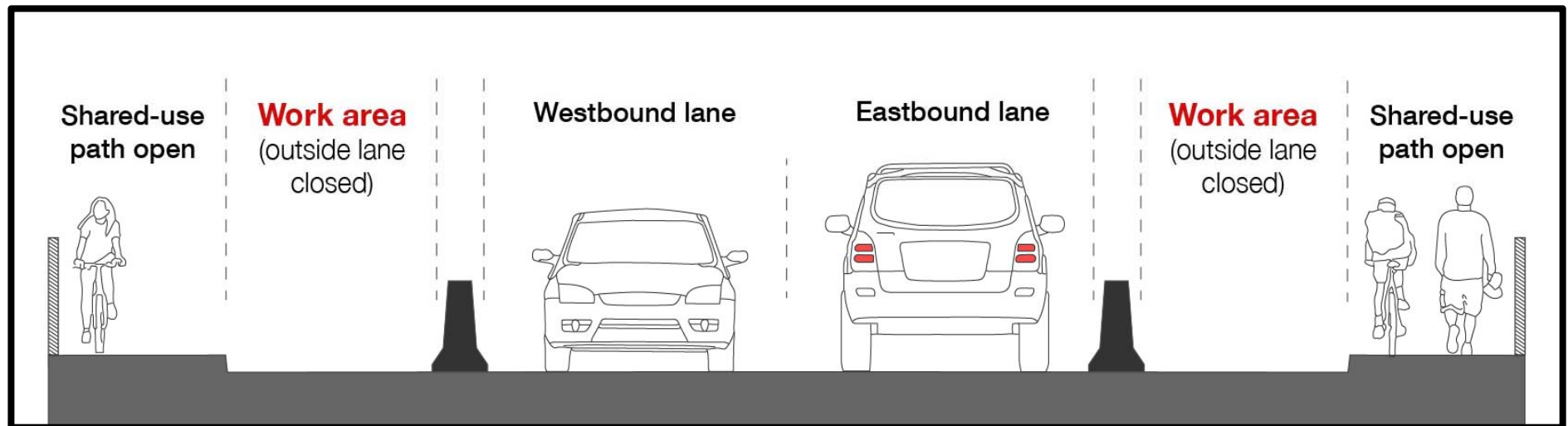


DCS Transportation Division - Bridge Program

Broadway Bridge Rail Wheel Replacement

Traffic Impacts:

- Two outside traffic lanes closed
 - Open to bikes and peds
 - May 2017 through Oct 2017
- Two full bridge closures
 - After wheel work on each leaf
 - For testing new wheels
 - Closed to all modes



DCS Transportation Division - Bridge Program

Morrison Bridge Lift Span Deck Replacement

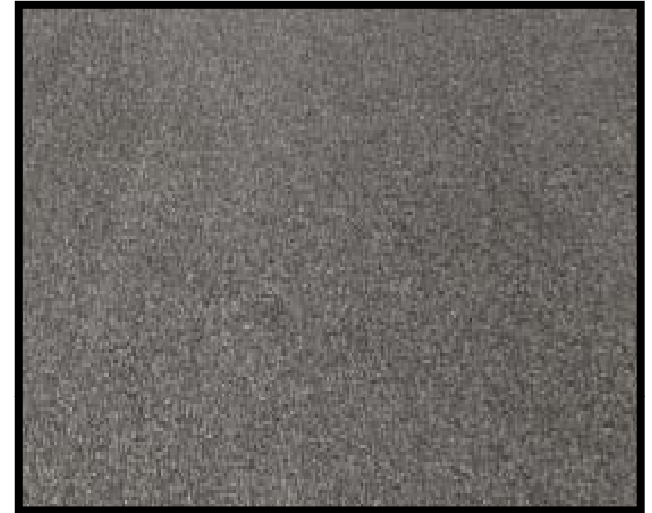


DCS Transportation Division - Bridge Program

Morrison Bridge Lift Span Deck Replacement

Reason for Project: Replace Failing FRP Deck

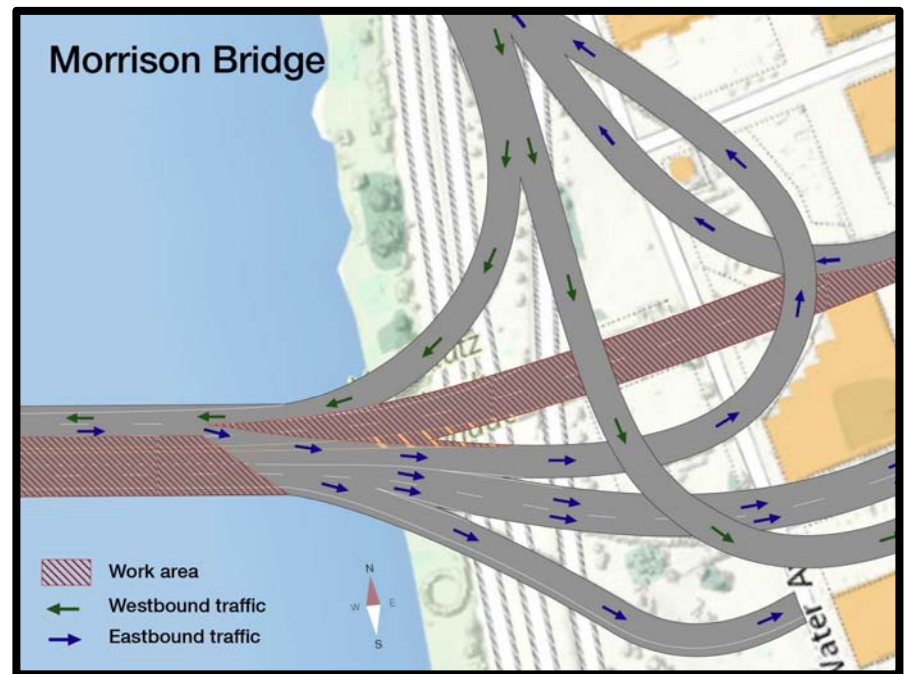
- Existing FRP deck Installed in 2012
 - Began to fail soon after installation
 - Driving surface was vast improvement
- Replace FRP deck with steel grid deck filled with lightweight concrete
- \$10.4 M total, 90% Federal



DCS Transportation Division - Bridge Program

Morrison Deck Replacement Traffic Impacts

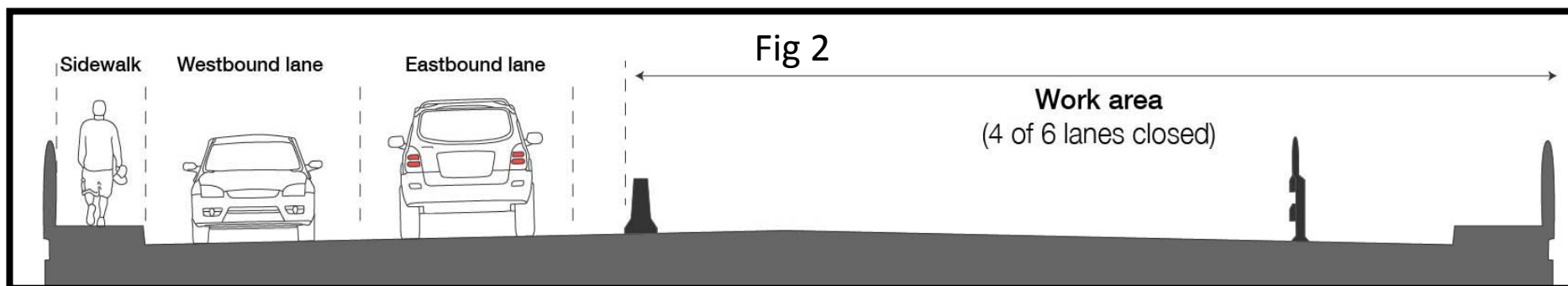
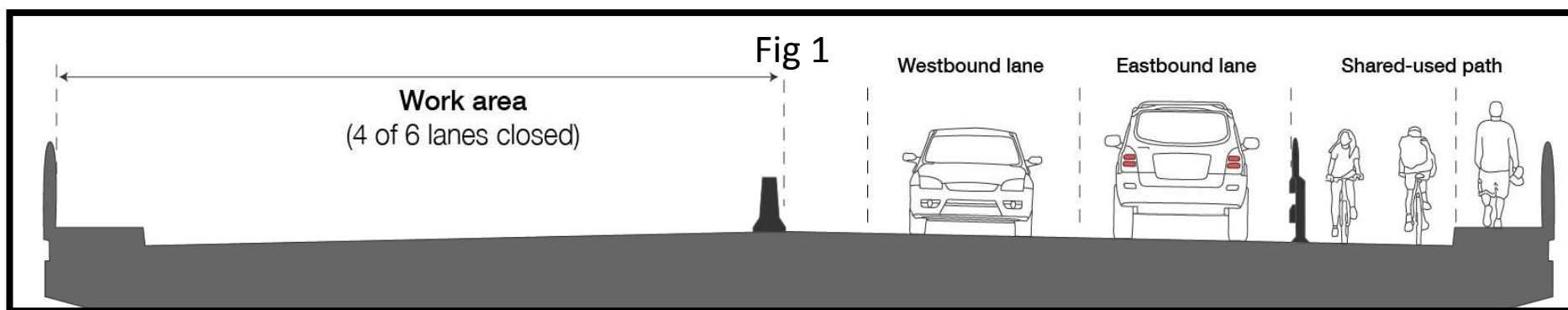
- Apr – Nov 2017
- **No** EB access to downtown from Grand
- Grand to I-5 N **open**
- I-5 South to downtown **open**
- 2 - 7 day full closures at end of deck work on each leaf



DCS Transportation Division - Bridge Program

Morrison Deck Replacement Key Impacts

- Fig 1: Shared use path **open**
Apr 1 to May 15
Jul 1 to Aug 15
- Fig 2: Shared use path **closed**
May 16 to Jun 15
Aug 15 to Sep 15
- Full Closure (Not Shown)
Jun 15 to Jun 30
Sep 15 to Sep 30



DCS Transportation Division - Bridge Program

Burnside Bridge Maintenance Project

Reason for the Project:

Extend service life of bridge 15-20 years

- Repair:
 - Concrete structure and railings
 - Corroded steel truss members
 - Crack in Pier 1
 - Mechanical components
- Replace electrical operating system
- Resurface sidewalks
- \$25 M total, 90% Federal

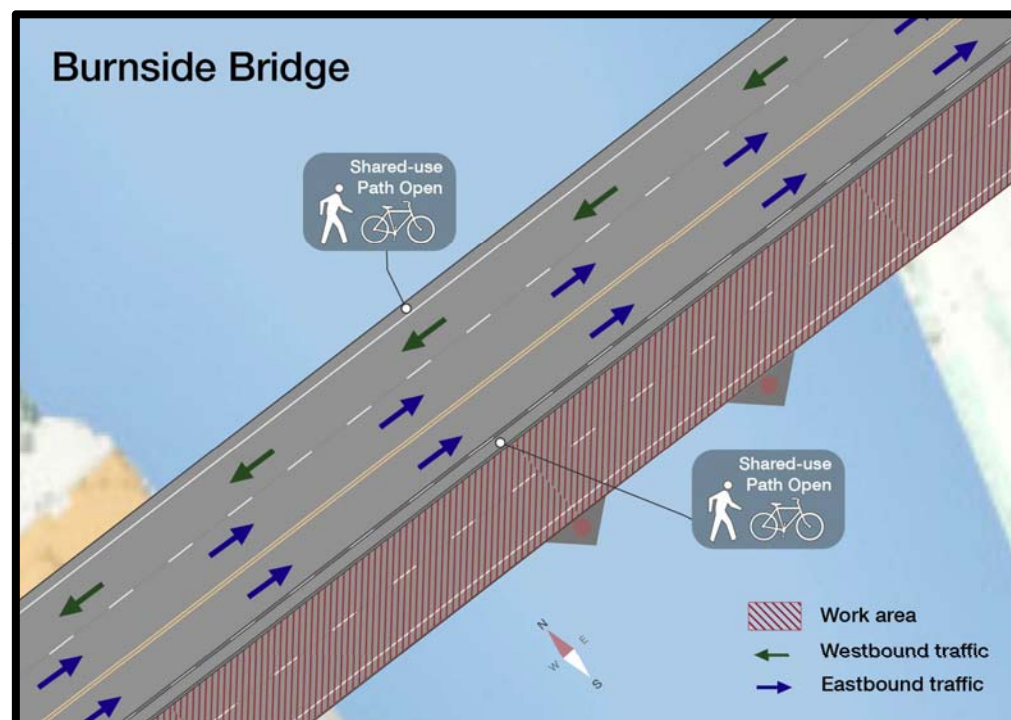


DCS Transportation Division - Bridge Program

Burnside Bridge Maintenance Project

Traffic Impacts:

- Field Work – Mar 2017 to Nov 2019
- No work on Br. deck before Nov 2017
- Other Lane Closures
 - Weekend I-5, I-84 closure
 - Lane closures on Naito Parkway
- Nov 2017 – Sep 2018
North side work



DCS Transportation Division - Bridge Program

2017 Major Projects – Traffic Impacts by Month

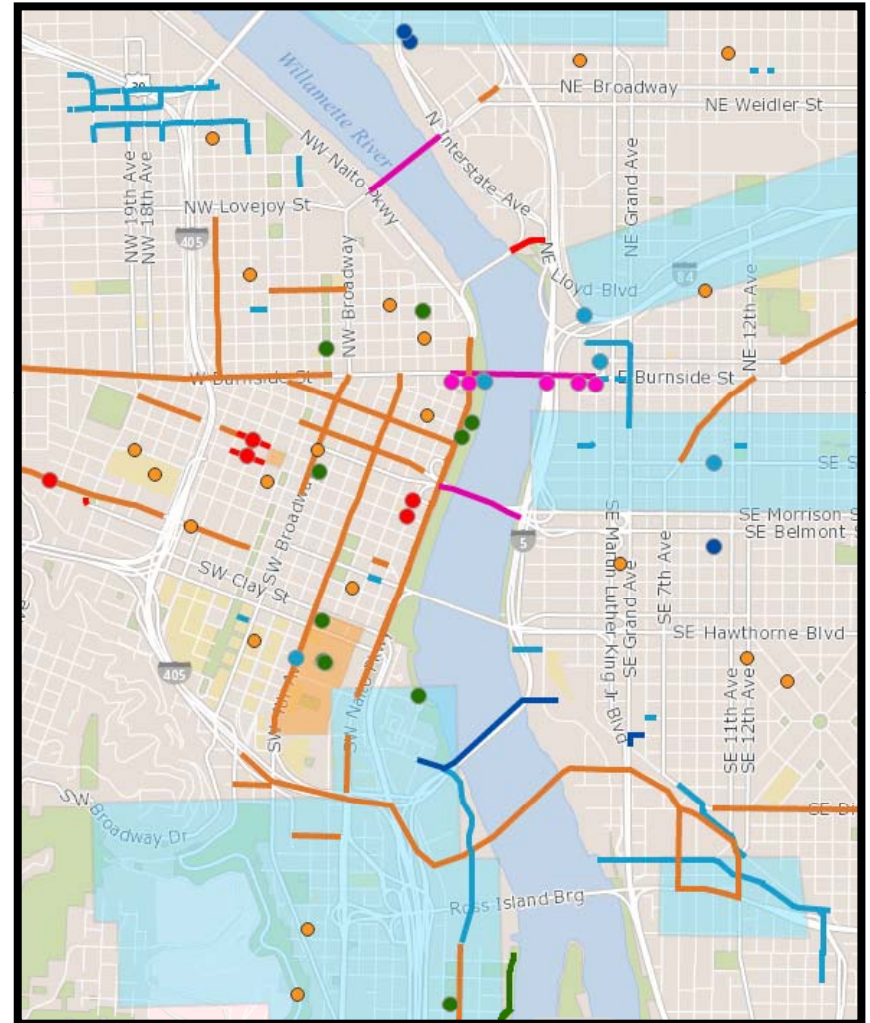
		2017											
		Jan	Feb	Mar	Apr	May	Jun	Jul	Aug	Sep	Oct	Nov	Dec
Broadway Br. (MC)													
	Rail Wheel	All lanes open			Yellow - 2 of 4 lanes open, Red - 48 hour (max) full closure							All lanes open	
Steel Br. (UPRR)													
	No Project 2017	All lanes open											
Burnside Br. (MC)													
	Maintenance	All lanes open										3 of 5 Lanes Open	
Morrison Br. (MC)													
	Deck Replacement	All lanes open			Yellow - 2 of 6 lanes open, Red - 7 day full closure							All lanes open	
Hawthorne Br. (MC)													
	No Project 2017	All lanes open											



DCS Transportation Division - Bridge Program

2017 Major Projects – Keep Portland Moving

- Goal – Coordinate project traffic impacts
 - 83 projects in Central City
 - Shared map
 - Shared Google calendar
- Hosted by City of Portland
- PM's from multiple agencies
- Meet monthly



Questions?

