



# MCSO - Troutdale

## Service Consolidation





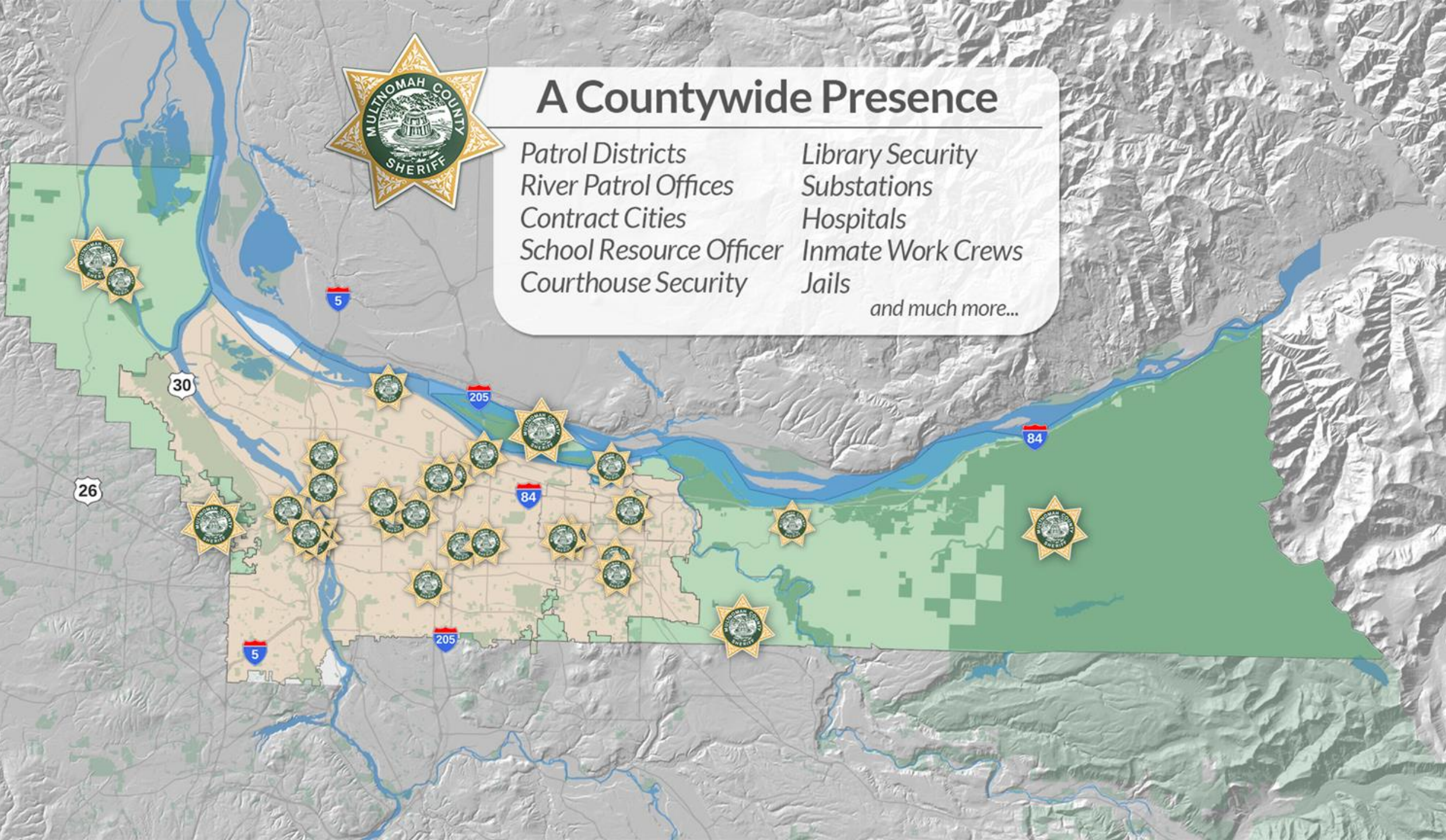


## A Countywide Presence

Patrol Districts  
River Patrol Offices  
Contract Cities  
School Resource Officer  
Courthouse Security

Library Security  
Substations  
Hospitals  
Inmate Work Crews  
Jails

*and much more...*

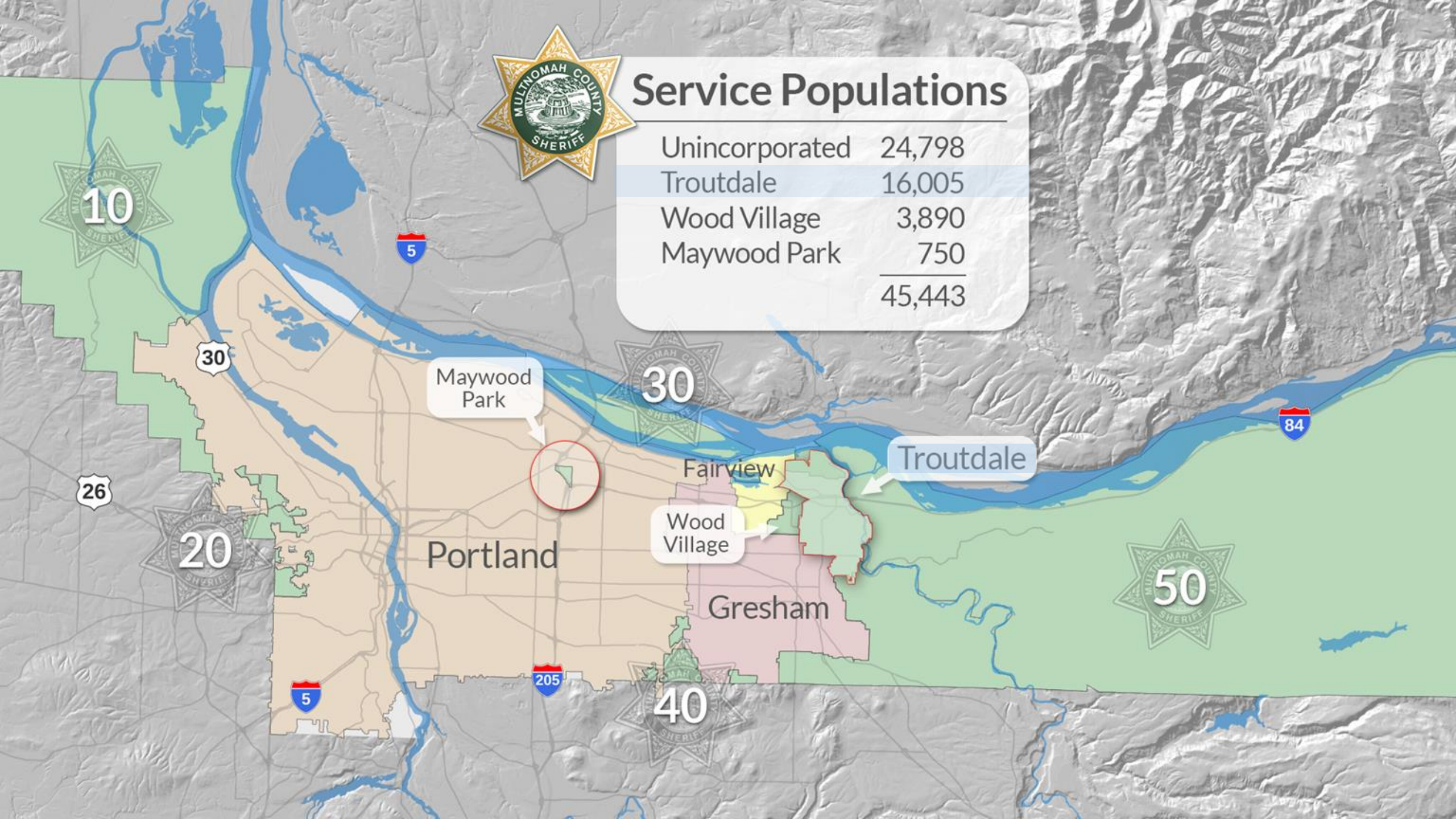






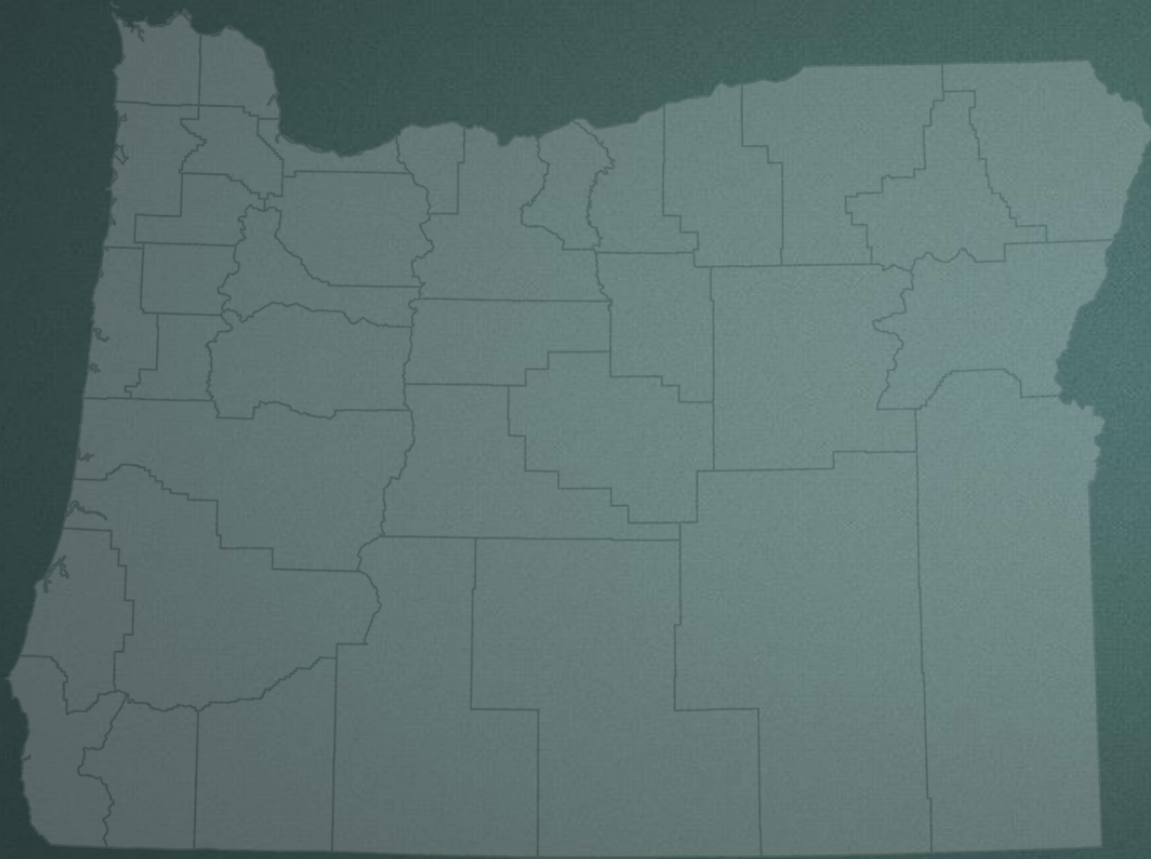
## Service Populations

Unincorporated	24,798
Troutdale	16,005
Wood Village	3,890
Maywood Park	750
	<hr/>
	45,443





## A GROWING TREND -- OREGON CONTRACT CITIES



Wilsonville	19,565
Troutdale	16,005
Happy Valley	14,330
Cornelius	12,161
Damascus	10,575
Sheridan	6,125
Creswell	5,015
Veneta	4,610
Wood Village	3,885
Coquille	3,865
Lafayette	3,740
Harrisburg	3,585

# TROUTDALE CITY COUNCIL GOALS

-  Improve and Support Livability in Troutdale
-  Fiscal Prioritization and Budget Accountability
-  Encourage Economic Development



# Troutdale Policing—Existing

## Current Services

Two Commanders  
24/7 Staffing in Two Districts  
14 hour/day Sergeant Staffing  
Two Investigators  
Daytime Records Unit  
Auxiliary Training Duties  
Auxiliary Property/Evidence  
Two School Resource Officers  
One EMGET Officer



One TriMet Officer  
Summer Beach Patrol  
One SWAT Member  
Two MCT Members  
One VCT Member  
Two HNT Members  
Eight Reserve Officers  
Limited Program Management

# Troutdale Policing—Enhancements to Existing Services

## Current Services

Two Commanders  
24/7 Staffing in Two Districts  
14 hour/day Sergeant Staffing  
Two Investigators  
Daytime Records Unit  
Auxiliary Training Duties  
Auxiliary Property/Evidence  
Two School Resource Officers  
One EMGET Officer

## Enhanced Services

Full Command Structure of MCSO  
Enhanced 24/7 Six Member Team  
24/7 Sergeant Staffing  
Full Service Detective Unit  
24/7 Full Service Records Unit  
Full-Time, Dedicated Training Unit  
Full Service Property/Evidence Unit  
Join Existing MCSO SRO  
Join Existing MCSO EMGET Deputies





# Troutdale Policing—Enhancements to Existing Services (Cont)

## Current Services

One TriMet Officer  
Summer Beach Patrol  
One SWAT Member  
Two MCT Members  
One VCT Member  
Two HNT Member  
Eight Reserve Officers  
Limited Program Management

## Enhanced Services

Join Existing MCSO TriMet Unit  
Full Service, Dedicated River Patrol Unit  
Enhanced Staffing, Including Supervisory  
Enhanced Staffing, Including Supervisory  
Enhanced Staffing, Including supervisory  
Enhanced Staffing  
Full Service Reserve Officer Program  
Enhanced Management Capabilities





# Troutdale Policing—New Services from MCSO

## New Services To Troutdale

Narcotics and Vice Enforcement (SIU)  
Comprehensive Investigative Services  
Motorcycle/Traffic Team  
Drug Lab/HAZMAT Mitigation Team  
Dive Team  
Swift Water Rescue Team  
Full Service Search and Rescue (SAR)  
Narcotics and Tracking K9 Unit



Warrant Strike Team (WST)  
Community Resource Officers  
Forest Service Deputy (PT)  
Oregon State Parks Deputy (PT)  
Annual Citizens Academy  
Volunteer Citizens Patrol Unit  
Inmate Work Crews  
Special Events Management



### A WIN for Multnomah County

---



Opportunity to move operational and administrative centers into East County



Enhance the MCSO team with additional quality law enforcement personnel



Cost savings from increased efficiencies and eliminating service duplication



Increased succession opportunities and cost savings through additional trained/experienced personnel



## COST SAVING SOURCES

- ✓ Services
- ✓ Training
- ✓ Academy Costs
- ✓ Overtime
- ✓ Equipment
- ✓ Fleet
- ✓ Fuel
- ✓ Maintenance





## LABOR CONSIDERATIONS

### ORS Chapter 236 – TRANSFER of PUBLIC EMPLOYEES

---

236.610 – *Rights of employee when duties assumed by different public employer; employer duties*

(1) No public employee shall be deprived of employment solely because the duties of employment have been assumed or acquired by another public employer...



## LABOR CONSIDERATIONS

### ORS Chapter 236 – TRANSFER of PUBLIC EMPLOYEES

---

236.610 – *Rights of employee when duties assumed by different public employer; employer duties*

(3) *It is the responsibility of the transferring employer to liquidate accrued compensatory time at the time of the transfer...*



## LABOR CONSIDERATIONS

### ORS Chapter 236 – TRANSFER of PUBLIC EMPLOYEES

---

236.610 – *Rights of employee when duties assumed by different public employer; employer duties*

(4)(a) *At the time of transfer, the public employee may elect to:*

- (A) *Retain any accrued sick leave*
- (B) *Retain up to 80 hours of vacation leave; and*
- (C) *Retain additional vacation leave if agreed to...*



## LABOR CONSIDERATIONS

### ORS Chapter 236 – TRANSFER of PUBLIC EMPLOYEES

---

236.610 – *Rights of employee when duties assumed by different public employer; employer duties*

(b) *At the time of transfer, the transferring employer shall pay to the receiving employer a sum equal to the number of hours of accrued leave retained times the employee's hourly rate of pay.*



# Troutdale Personnel Absorption

26 PEOPLE—HOW ARE THEY FUNDED?

## THREE FUNDING SOURCES:

	<u>FTE's</u>
(1) FY15-16 Service Contract with Troutdale	16.53
(2) 3 <sup>rd</sup> Party Contracted Services	3.50
(3) Absorbed into Current Vacancies or Succession	5.97
	=====
	26.00



## MCSO FY 2015-2016 CONTRACT SERVICE REVENUE

Personnel (Officers, Sergeants, Commanders, Admin, OT)	16.53FTE	\$2.3M
Annual Materials and Supplies		\$220K
County Wide Central Support Services Indirect Costs		\$69K
Departmental Management Indirect Costs		\$150K
<i>Capital Outlay/ISR:</i>		
Annual Patrol Vehicle Replacement Cost		\$59K
Mobile Data Terminal (MDT) Replacement		\$10K
Portable and Mobile Radio Replacement		\$5K
		=====
Total MCSO FY 2015-2016 Service Revenue		\$2.8M



## 3<sup>rd</sup> Party Contract Services Assumed by MCSO

<u>Contract</u>	<u>Services</u>	<u>FTE's</u>	<u>Amount</u>
Reynolds School District	School Resource Deputies	1.50	\$188K
TriMet	Transit Deputy	1.00	\$126K
East Metro Gang Enforcement	Gang Deputy	1.00	\$126K
Departmental Management Indirect Costs			\$38K
			=====
***Total 3 <sup>rd</sup> Party Contracts Assumed by MCSO			\$477K

*\*\*\*All of these 3<sup>rd</sup> party contracts pay County Indirect Costs.*



## Employees Absorbed into Vacant or Succession Positions



Leadership	1.34 FTE
Patrol Services	3.63 FTE
<u>Administrative Support</u>	<u>1.00 FTE</u>
<b>Total Positions Absorbed</b>	<b>5.97 FTE</b>

## Additional Costs to Sheriff

Purchase of 8 TPD Police Vehicles	\$160K
MCSO FY16 Lease of Troutdale Police Station	\$228K
TPD Building Mods, IT, Telecom, Moving Expenses	\$100K
	=====
<b>**Total FY15-16 Additional Expenses</b>	<b>\$488K</b>

**\*\*** *Total amount proposed to be funded by FY15 MCSO savings in a FY16 Carryover Amendment.*



# SPECIAL THANKS

## MULTNOMAH COUNTY

Chair Deborah Kafoury  
Commissioner Diane McKeel  
Sherry Swackhamer (DCA Director)  
Nancy Bennett (COS to Chair)  
Eric Zimmerman (COS to District 4)  
Karyne Kieta (Dep Director DCM)  
Alan Vogt (Finance Manager)  
Mike Jaspin (Economist, Dep Bud Dir)  
Carlo Calandriello (Asst Co Attorney)  
Jed Tomkins (Asst Co Attorney)  
Jeff Heinrich (Co Labor Relations)  
AFSCME Local 88

Henry Alaman (Director FPM)  
Peggidy Yates (FPM)  
Brett Taute (FPM)  
Carla Bangert (FPM Leasing)  
Garret Vanderzanden (Fleet)  
Linda Yankee (MCSO)  
Jason Gates (MCSO)  
Tim Moore (MCSO)  
Brent Ritchie (MCSO)  
Jack Diamond (MCSO)  
David Braaksma (MCSO)  
Mult Co Deputy Sheriffs Assoc

## TROUTDALE

Erich Mueller (Trdl Fin Dir)  
Craig Ward (Trdl City Mgr)  
Mayor Doug Daoust  
Councilor David Ripma  
Councilor Eric Anderson  
Councilor Larry Morgan  
Councilor Glenn White  
Councilor Rich Allen  
Councilor John Wilson  
Troutdale Police Off Assoc

## CONCEPT DESIGN:

Sheriff Daniel Staton  
Chief Scott Anderson

